

RECORD OF SURVEY

"LOWER JACKSON BOUNDARY LINE MAINTENANCE"
 USDA FOREST SERVICE
 UMPQUA NATIONAL FOREST-TILLER RANGER DISTRICT
 CONTRACT NO. 1204T020D0004 - TASK ORDER NO. 1240BH21F0025
 LOCATED IN SECTIONS 5 & 6, T.30S., R.1W.,
 & SECTION 31, T.29S., R.1W., W.M.
 DOUGLAS COUNTY, OREGON

FILED
 Date: 9-21-2021 By: JC
 This Survey Consists of:
 Map: M179-77
 Narrative:
 Corner Rpt.:
 DOUGLAS COUNTY SURVEYOR

NARRATIVE:

THE PURPOSE OF THIS SURVEY IS TO RETRACE A PORTION OF THE UMPQUA NATIONAL FOREST BOUNDARY, LOCATED IN SECTION 5, T.30S., R.1W., AND SECTION 31, T.29S., R.1W., W.M., AND TO MAINTAIN THE BOUNDARY LINES, CORNER MONUMENTS, AND ACCESSORIES TO USDA FOREST SERVICE CONTRACT STANDARDS. I ACCEPT THE EAST 1/16 CORNER FOR SECTIONS 31 & 6 (#1), THE NORTHWEST CORNER OF SECTION 5 (#2), AND THE 1/4 CORNER FOR SECTIONS 5 AND 6 (#4), IN THEIR CURRENT MONUMENTED POSITIONS. THE WEST LINE OF THE WEST 1/2 OF THE NORTHWEST 1/4 OF SECTION 5 HAD PREVIOUSLY BEEN POSTED AND BLAZED BY USFS FORCE ACCOUNT AND THE POSTS ARE ON LINE BETWEEN THESE ACCEPTED MONUMENTS. THE NORTH 1/16 CORNER FOR SECTIONS 5 AND 6 WAS COMPUTED AND SET BY PIESKE IN 1993, USING THE LOCATION OF THE REFERENCE(W.C.) MONUMENT AND NOT THE LOCATION OF THE CORNER TREE FOR THE 1/4 CORNER OF SECTIONS 5 AND 6. THE MONUMENT SET BY PIESKE MAY BE USED FOR THE DEFINING THE PRIVATE PROPERTY BOUNDARIES IN SECTION 6 ONLY AND NOT CONSIDERED THE TRUE NORTH 1/16 CORNER LOCATION. TO MAINTAIN EXISTING BOUNDARIES, I RETURN POSTS TO PLUMB POSITION, REPLACE ANY MISSING OR FADED 54-2 SIGNS, SET NEW 6 FT ALUMINUM POSTS, AND RE-PAINT & BLAZE THE BOUNDARY. I ADJUST OR RESET POSTS WHICH ARE MORE THAN ±0.5 FEET FROM TRUE LINE. TREES WITHIN 3-5 FT OF THE BOUNDARY ARE BLAZED WITH QUARTER BLAZES ON USFS TREES, AND ONE FACING BLAZE ON PRIVATE TREES, WITH HACK MARKS ABOVE AND BELOW EACH BLAZE. LINE TREES ARE BLAZED WHERE LINE PASSES THROUGH TREE AT BREST HEIGHT, WITH THREE BLAZES ON EACH SIDE OF TREE. ALL BLAZES ARE PAINTED RED. THE FIELD WORK WAS PERFORMED BY RUSSELL BADGLEY, ISAAC JACOBSEN, AND SKYLER COMBS, WITH DRAFTING BY RUSSELL BADGLEY.

CORNER DESCRIPTIONS:

ALL NEW BEARING TREES HAVE DOUBLE BLAZED FACES WITH A 1" BRASS WASHER STAMPED "BADGLEY PLS70716" NAILED INTO THE LOWER BLAZE. ON ALL NEW AND EXISTING BEARING TREES, BEARINGS ARE TAKEN TO THE CENTER OF THE TREE AT THE ROOT CROWN AND DISTANCES ARE MEASURED TO A 6" CHAINING NAIL IN THE ROOT CROWN AT THE SIDE AND CENTER OF THE TREE WITH A TOTAL STATION. ALL BEARING TREES HAVE A 6" RED BAND PAINTED AROUND THE TREE AND THE BLAZED FACES PAINTED RED, WITH 54-3 "BEARING TREE" SIGNS NAILED AT ±5 FT HIGH FACING THE CORNER, AND 54-4 "ATTENTION" OR 54-9 "LSM" SIGNS NAILED AT ±7 FT HIGH ON THE BACKSIDE OF THE TREE.

1. E. 1/16 COR. S6 & (S31) PLSS ID NO. T30SR1W 160700 INDEX NO. A-4
 FD. A 2 1/2" IRON POST BY THE BLM IN 1971 PER GROUP NO. 748, FIRMLY SET WITH A 2' COLLAR OF STONE & PROJECTING 7" ABOVE THE COLLAR WITH A 3 1/4" BRASS CAP MKD:

FROM WHICH BEARING TREES BY THE BLM IN 1971:
 A 22" W. FIR BEARS (N.7°E., 19.7 FT)R1 W/HEALED BLAZE (29 LKS)R4
 A 21" W. FIR BEARS (S.9 1/2°E., 24.9 FT)R1 W/HEALED BLAZE (37 LKS)R4

2. COR. S5/S6 & (S31/S32)T29S PLSS ID NO. T30SR1W 200700 INDEX NO. A-5
 FD. A 2" IRON POST BY J.A. HOFFBUHR, R.L.S. 222, IN 1970 PER C/S 55/158 AND M 40-4, FIRMLY SET, PROJECTING 3" ABOVE THE GROUND WITH A 2 1/2" BRASS CAP MKD:

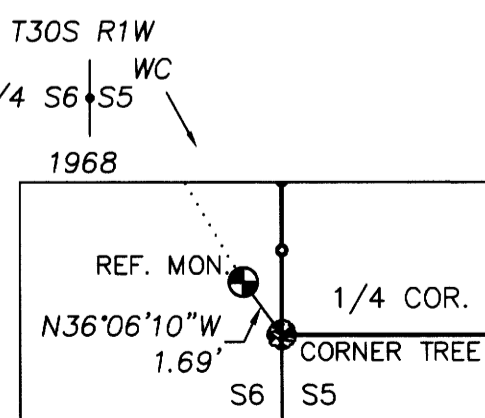
FROM WHICH AN ORIGINAL BEARING TREE BY MENSCH IN 1904:
 A ROTTEN D. FIR STUMP BEARS N.60°15'W., 25.9 FT (N.61°W., 25.6 FT)R5 W/SCRIBE PARTIALLY VISIBLE AND BEARING TREES BY MARKHAM IN 1960:
 A 11" B. OAK BEARS N.84°45'W., 9.4 FT (N.85°W., 9.6 FT)R5 W/HEALED DOUBLE BLAZE
 A 17" W. FIR SNAG BEARS S.10°30'W., 19.0 FT (S.11°W., 18.9 FT)R5 W/HEALED DOUBLE BLAZE & "X"
 AND A BEARING TREE BY SHANER IN 1971:
 A 17" D.FIR BEARS N.12°00'E., 45.5 FT (N.12 1/2°E., 45.8 FT)R5 W/HEALED DOUBLE BLAZE
 AND A BEARING TREE BY LANDRUM IN 1983:
 A 14" D.FIR BEARS S.56°00'E., 30.9 FT (S.56°E., 31.0 FT)R5 W/HEALED SINGLE BLAZE

3. "N. 1/16 COR. S5/S6" PLSS ID NO. T30SR1W 200660 INDEX NO. B-5
 FD. A 2 1/2" ALUMINUM POST BY HERMAN PIESKE, LS 1651, IN 1993 PER M117-62 {DID NOT SET AT CORRECT LOCATION FOR 1/16 CORNER}, FIRMLY SET & PROJECTING 3" ABOVE THE GROUND WITH A 3 1/4" ALUMINUM CAP MKD:

FROM WHICH BEARING TREES BY PIESKE IN 1993:
 A 16" D. FIR BEARS S.52°30'E., 7.3 FT (S.50°E., 7.4 FT)R3 W/HEALED BLAZE
 A 14" CEDAR BEARS S.28°45'W., 17.9 FT (S.35°W., 17.9 FT)R3 W/HEALED BLAZE

4. 1/4 COR. S5/S6 PLSS ID NO. T30SR1W 200640 INDEX NO. C-5
 FD. THE ORIGINAL CORNER TREE, BY FRED MENSCH IN 1904, PER CONTRACT #757, NOW A ROTTING 34" STUMP, WITH AN EXISTING SPIKE IN THE TOP AND REMNANTS OF A BLAZE:

FROM WHICH REFERENCES BY THE DCSO IN 1968:
 A 1" IRON POST, BY THE DCSO IN 1968 PER C.S. FILE 54/59-26, FIRMLY SET IN A MOUND OF STONE, PROJECTING 12", BEARS N.36°06'10"W., 1.69 FT., WITH A 2 1/2" DCSO BRASS CAP, MKD:
 A 22" D. FIR BEARS S.89°00'E., 44.9 FT W/HEALED DOUBLE BLAZE (S.89°E., 44.9 FT)R5
 A 22" D. FIR BEARS S.61°15'E., 31.1 FT W/HEALED DOUBLE BLAZE (S.63°E., 30.8 FT)R5
 AND A BEARING TREE BY BAUGHMAN IN 1979:
 A 13" D. FIR BEARS S.32°45'W., 21.5 FT W/HEALED DOUBLE BLAZE (S.32°W, 22.4 FT)R5
 AND BEARING TREES BY OTHERS:
 A 12" CEDAR BEARS N.40°00'W., 9.8 FT W/HEALED DOUBLE BLAZE (N.42°W., 10.1 FT)R5
 A 13" D. FIR BEARS S.61°00'E., 13.3 FT W/HEALED DOUBLE BLAZE (NO RECORD)



SURVEY CONTROL PROCEDURE:

A RTK GPS CONTROL SURVEY WAS PERFORMED UTILIZING LEICA 1200 SERIES GPS RECEIVERS, AND CONTROLLED BY AN OPUS SOLUTION ON ONE OF THE PROJECT CONTROL POINTS. THE RESULTING GEODETIC COORDINATES WERE PROJECTED INTO THE BELOW DEFINED COORDINATE SYSTEM. POSTED LINES AND CONTROLLING CORNERS WERE TIED BY CONVENTIONAL TRAVERSE WITH A LEICA TC1203 TOTAL STATION FROM THE RTK GPS CONTROL POINTS, AND ADJUSTED IN LEICA GEO OFFICE BY THE METHOD OF LEAST SQUARES.

COORDINATE SYSTEM NAME: 21-050_30S1W05
 PROJECTION: TRANSVERSE MERCATOR

REFERENCE DATUM: NAD 83 (2011) (EPOCH 2010.00)
 ELLIPSOID: GRS 1980
 LATITUDE OF GRID ORIGIN: 43° 00' 00"N
 CENTRAL MERIDIAN: 122° 52' 00"W
 FALSE NORTHING: 50,000.00 iFT
 FALSE EASTING: 150,000.00 iFT
 CENTRAL MERIDIAN SCALE: 1.000094000

NAD83 (2011) CORNER NO.	EPOCH 2010.00 LATITUDE	GEODETIC COORDINATES: LONGITUDE
1 - 160700	43°00'16.78511"N	122°52'03.74331"W
2 - 200700	43°00'16.79838"N	122°51'45.67925"W
3 - 200660	43°00'03.93321"N	122°51'45.70641"W
4 - 200640	42°59'50.57875"N	122°51'45.72064"W

RECORDS:

R1 = M49-43 ~ BRUCE SHANER - 1973
 R2 = M79-73 ~ BRUCE SHANER - 1981
 R3 = M117-62 ~ HERMAN PIESKE - 1993
 R4 = BLM DEPENDANT RESURVEY ~ GROUP NO. 748 - 1973
 R5 = DCSO CORNER NOTES

LEGEND:

- = EXISTING N.F. BOUNDARY MAINTAINED - RE-BLAZED, PAINTED, & RE-POSTED
- Ⓝ = CORNER NUMBER - SEE CORNER DESCRIPTIONS
- ⊕ = FOUND PLSS MONUMENT AS NOTED
- ()R# = RECORD MEASUREMENT PER RECORD REFERENCE
- NFSL = NATIONAL FOREST SYSTEMS LANDS

CERTIFICATION:

I HEREBY CERTIFY THAT THIS SURVEY WAS PERFORMED AT THE REQUEST OF THE UMPQUA NATIONAL FOREST SUPERVISOR.

Alex B. Carter 9/14/2021
 SIGNATURE DATE

EXAMINED AND ACCEPTED THIS 12th DAY OF August, 2021

Michael Schulze
 MICHAEL SCHULZE, C.O.R.

"I, RUSSELL BADGLEY, A REGISTERED LAND SURVEYOR IN THE STATE OF OREGON, HEREBY CERTIFY THAT THIS PLAT AND THE NOTES HEREON OR ATTACHED ARE A CORRECT REPRESENTATION OF THE SURVEY THAT I PERFORMED FROM APRIL 28, 2021 TO MAY 16, 2021 AT THE REQUEST OF THE USDA FOREST SERVICE, IN ACCORDANCE WITH THE STATUTES OF THE STATE OF OREGON AND THE ARTICLES OF MY CONTRACT."

Russell Badgley 7/25/2021
 RUSSELL BADGLEY DATE
 OREGON REGISTERED LAND SURVEYOR #70716

REGISTERED
 PROFESSIONAL
 LAND SURVEYOR

OREGON
 NOVEMBER 13, 2007
 RUSSELL BADGLEY
 70716

RENEWS: 12-31-2021

BTS SURVEYING, INC.
 348 SE JACKSON ST., ROSEBURG, OR 97470
 (541) 673-0966 russell@btssurveying.com

SCALE: 1" = 200'
 DATE: 7-28-2021
 FOR: USDA FOREST SERVICE
 UMPQUA NATIONAL FOREST
 "LO-JACK"
 JOB #: 21-050
 FILE: 30S1W_S5_Plat.DWG
 SHEET 1 OF 1

MAP FILE M179-77

MAP FILE M179-77