

MAP OF SURVEY

SURVEY FOR: LONE ROCK TT LANDCO, LLC
 P.O. BOX 1127 ROSEBURG, OREGON 97470
 SURVEY BY: LONE ROCK TIMBER MANAGEMENT CO
 P.O. BOX 1127 ROSEBURG, OREGON 97470

NE 1/4 OF SECTION 36, TOWNSHIP 24 SOUTH, RANGE 2 WEST W.M.
 AND SW 1/4 OF SECTION 30, TOWNSHIP 24 SOUTH RANGE 1 WEST W.M.
 DOUGLAS COUNTY, OREGON

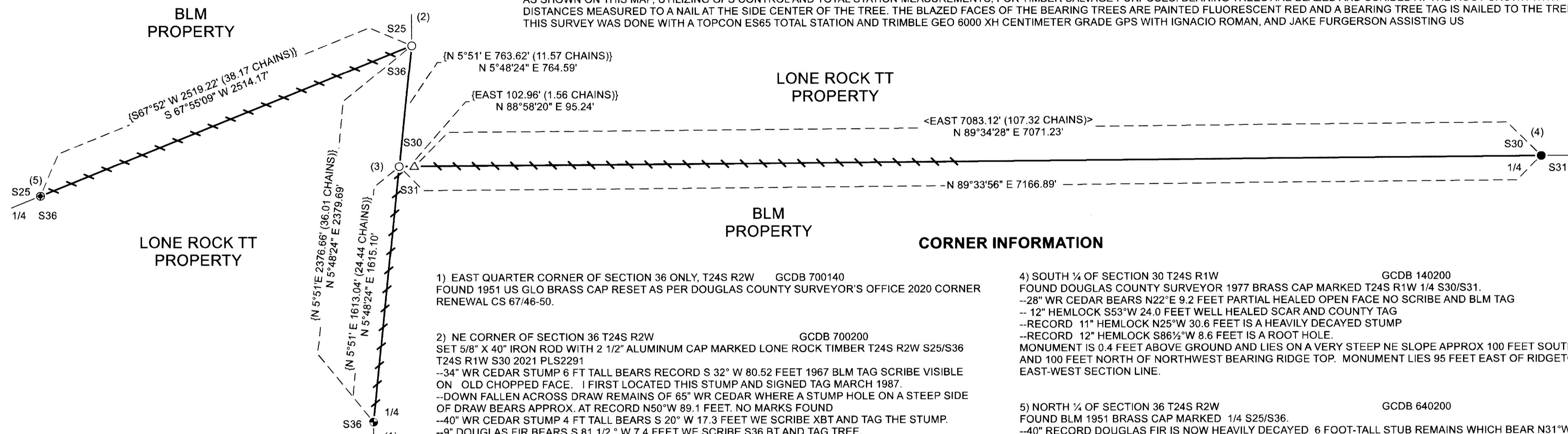
TRACT: F240236 AND F240130

DATE: JULY 2021

NARRATIVE

THE PURPOSE OF THIS SURVEY IS TO ESTABLISH AND MARK PROPERTY LINES FOR TIMBER MANAGEMENT AND TIMBER FIRE SALVAGE PURPOSES FOR LONE ROCK TT LANDCO, LLC. PROPERTIES IN THE NORTHEAST 1/4 OF SECTION 36, T.24S, R.2W, AND THE SOUTH 1/2 OF SECTION 30, T.24S, R.1W, W.M. MUCH OF THE AREA IN THIS SURVEY PROJECT HAS BEEN BURNED TO VARYING DEGREES BY THE ARCHIE CREEK FIRE WHICH ENHANCED OUR GPS CAPABILITIES BUT CREATED ACCESS AND CONVENTIONAL SURVEY DIFFICULTIES. WE INITIATED OUR SURVEY AT THE QUARTER SECTION CORNER BETWEEN SECTIONS 31, T.24S R1W AND 36 T.24S R2W (CORNER 1) WHICH WE INITIALLY FOUND OBVIOUSLY LEANING/LOOSE OUT OF POSITION. THIS QUARTER CORNER WAS RESET AND RENEWED AT OUR REQUEST BY THE DOUGLAS COUNTY SURVEYOR'S OFFICE IN CS67/46-50 IN CONJUNCTION WITH THIS SURVEY. WE UTILIZED GPS OBSERVATIONS TO ESTABLISH CONTROL POINTS AND ON FOUND CORNER MONUMENTS WHERE POSSIBLE IN OPEN SKY AREAS WITHIN THE PROJECT AREA. WITH THIS GPS CONTROL IN CONJUNCTION WITH CONVENTIONAL RANDOM CLOSED TRAVERSES WE TIED TO APPROXIMATE POSITIONS FOR THE SECTION CORNER OF 25 AND 36, T.24S R1W (CORNER 2) AND CLOSING CORNER OF SECTION 30 AND 31, T.24S R1W (CORNER 3). WE MADE A DILIGENT SEARCH FOR THE SECTION CORNER OF 25 AND 36 UTILIZING CONTROL POINTS ESTABLISHED BY OUR TRAVERSE AND COMPUTATIONS FROM FOUND AND TIED BEARING TREES TO ATTEMPT TO LOCATE THE CORNER MONUMENT. THE SECTION CORNER OF 25 AND 36 LIES IN A CREEK, LOCATED WITHIN THE CONFINES OF A STEEP CANYON WHICH HAS BEEN SUBJECTED TO MULTIPLE FLOOD AND LAND SLIDE EVENTS AND THE BRASS CAP APPEARS TO HAVE BEEN DESTROYED. WE RE-ESTABLISHED THE NE CORNER OF SECTION 36 FROM A FOUND RECORD BEARING TREE AT RECORD DISTANCE AND BEARING. WE TIED IN THE NORTH QUARTER CORNER OF SECTION 36 (CORNER 5) AND THE SOUTH QUARTER CORNER OF SECTION 30 (CORNER 4) BY DIRECT GPS OBSERVATION AS WELL AS ESTABLISHED GPS CONTROL POINTS ALONG THE CORRESPONDING SECTION LINES TO ESTABLISH AND MARK THE PROPERTY BOUNDARY LINES SHOWN. WE MADE A SEARCH FOR THE ORIGINAL SW CORNER OF SECTION 30 CLOSING CORNER CEDAR POST AND BEARING TREE WHICH WERE FOUND IN THE BLM 1963 SURVEY BUT NOT REMONUMENTED IN 1963. WE FOUND A POSSIBLE STUMP HOLE AND BURNED CEDAR POST REMAINS NEAR THE COMPUTED RECORD ORIGINAL POSITION FOR THE SW CORNER OF SECTION 30 BUT WE DETERMINED THERE WAS NOT ENOUGH CONCLUSIVE EVIDENCE TO RESET A MONUMENT AT THE ORIGINAL CORNER POINT. THE 1963 BLM SURVEY DETERMINED AND PLATTED THE POSITION FOR THE SW CORNER OF SECTION 30 AT THE INTERSECTION OF THE SOUTH LINE OF SECTION 30 AND THE EAST LINE OF SECTION 36 BUT DID NOT MONUMENT THIS POINT. WE SET A MONUMENT (CORNER 3) FOR THE SW CORNER OF SECTION 30 AT THE INTERSECTION OF SECTION LINES AS DETERMINED BY THE 1963 BLM SURVEY AT THE PROPORTIONAL DISTANCE FROM THE 1963 BLM DISTANCE BETWEEN THE NE CORNER OF SECTION 36 (CORNER 2) AND THE EAST 1/4 CORNER OF SECTION 36 (CORNER 1). PROPERTY BOUNDARY LINES AS SHOWN MARKED ON THIS MAP WERE MARKED ON THE GROUND WITH BLUE AND RED PROPERTY LINE RIBBON AND WHERE PRESENT TREES ALONG THE BOUNDARY LINE WERE BLAZED AND PAINTED WITH FLUORESCENT RED PAINT. METAL U-POSTS WERE PLACED ON LINE AT RANDOM INTERVALS AND LRT ALUMINUM PROPERTY LINE TAGS WERE INSTALLED ON TREES ALONG ALL PROPERTY LINES. WE MARKED THE WESTERLY 3560 FEET OF THE SOUTH LINE OF SECTION 30, AS SHOWN ON THIS MAP, UTILIZING GPS CONTROL AND TOTAL STATION MEASUREMENTS. FOR TIMBER SALVAGE PURPOSES. BEARING TREES ARE BLAZED AND SCRIBED AT THE ROOT CROWN WITH DISTANCES MEASURED TO A NAIL AT THE SIDE CENTER OF THE TREE. THE BLAZED FACES OF THE BEARING TREES ARE PAINTED FLUORESCENT RED AND A BEARING TREE TAG IS NAILED TO THE TREE. THIS SURVEY WAS DONE WITH A TOPCON ES65 TOTAL STATION AND TRIMBLE GEO 6000 XH CENTIMETER GRADE GPS WITH IGNACIO ROMAN, AND JAKE FURGERSON ASSISTING US

FILED
 DATE: 8-26-2021 BY: M
 THIS SURVEY CONSISTS OF:
 MAP: M179-05
 NARRATIVE:
 CORNER RPT:
 DOUGLAS COUNTY SURVEYOR



CORNER INFORMATION

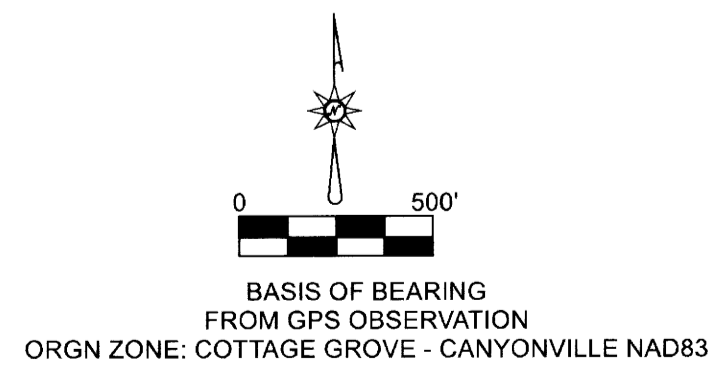
- 1) EAST QUARTER CORNER OF SECTION 36 ONLY, T24S R2W GCDB 700140
 FOUND 1951 US GLO BRASS CAP RESET AS PER DOUGLAS COUNTY SURVEYOR'S OFFICE 2020 CORNER RENEWAL CS 67/46-50.
- 2) NE CORNER OF SECTION 36 T24S R2W GCDB 700200
 SET 5/8" X 40" IRON ROD WITH 2 1/2" ALUMINUM CAP MARKED LONE ROCK TIMBER T24S R2W S25/S36 T24S R1W S30 2021 PLS2291
 --34" WR CEDAR STUMP 6 FT TALL BEARS RECORD S 32° W 80.52 FEET 1967 BLM TAG SCRIBE VISIBLE ON OLD CHOPPED FACE. I FIRST LOCATED THIS STUMP AND SIGNED TAG MARCH 1987.
 --DOWN FALLEN ACROSS DRAW REMAINS OF 65" WR CEDAR WHERE A STUMP HOLE ON A STEEP SIDE OF DRAW BEARS APPROX. AT RECORD N50°W 89.1 FEET. NO MARKS FOUND
 --40" WR CEDAR STUMP 4 FT TALL BEARS S 20° W 17.3 FEET WE SCRIBE XBT AND TAG THE STUMP.
 --9" DOUGLAS FIR BEARS S 81 1/2 ° W 7.4 FEET WE SCRIBE S36 BT AND TAG TREE.
 --15" DOUGLAS FIR BEARS N 51 1/2 ° W 43.2 FEET WE SCRIBE S25 BT AND TAG TREE.
 --45" WR CEDAR STUMP 5 FT TALL ON UPHILL SIDE OF VERY STEEP SLOPE BEARS N 56 1/4 ° E 50.5 FEET WE SCRIBE BT AND TAG THE STUMP.
 --9" WR CEDAR BEARS S 63 ° E 45.5 FEET WE SCRIBE S36 BT AND TAG TREE
 MONUMENT IS 0.1 FT ABOVE GROUND ON THE BOTTOM WEST EDGE OF VERY STEEP DRAW. THE DRAW APPEARS TO HAVE BEEN SUBJECT TO LARGE DEBRIS FLOWS IN THE PAST. THE CORNER LIES 3.5 FEET SW OF CENTERLINE OF SECONDARY CREEK AND 23 FEET SW OF CENTERLINE OF MAIN CREEK WHICH FLOWS DOWNHILL NORTHWESTERLY ON THE EAST EDGE OF DRAW BOTTOM.
- 3) SW CORNER OF SECTION 30 T24S R1W GCDB 700200
 SET 5/8" X 40" IRON ROD WITH 2 1/2" ALUMINUM CAP MARKED LONE ROCK TIMBER T24S R2W S36/ T24S R1W S30 S31 2021 PLS2291
 --9" DOUGLAS FIR BEARS S 81 1/2 ° W 7.4 FEET WE SCRIBE S36 BT AND TAG TREE.
 --18" DOUGLAS FIR BEARS N 51 3/4 ° W 21.80 FEET WE SCRIBE X S36 BT AND TAG TREE.
 --19" HEMLOCK BEARS N 73 1/4 ° E 22.55 FEET WE SCRIBE T24S R1W S31 BT AND TAG TREE
 --12" HEMLOCK BEARS N 47 1/2 ° E 23.52 FEET WE SCRIBE T24S R1W S30 BT AND TAG TREE
 MONUMENT IS 0.3 FEET ABOVE GROUND AND LIES ON A VERY STEEP NORTH SLOPE IN A VERY OLD NORTH-SOUTH CAT FIRELINE ROAD 160 FEET SOUTH OF GRAVEL ROAD
- 4) SOUTH 1/4 OF SECTION 30 T24S R1W GCDB 140200
 FOUND DOUGLAS COUNTY SURVEYOR 1977 BRASS CAP MARKED T24S R1W 1/4 S30/S31.
 --28" WR CEDAR BEARS N22°E 9.2 FEET PARTIAL HEALED OPEN FACE NO SCRIBE AND BLM TAG
 -- 12" HEMLOCK S53°W 24.0 FEET WELL HEALED SCAR AND COUNTY TAG
 --RECORD 11" HEMLOCK N25°W 30.6 FEET IS A HEAVILY DECAYED STUMP
 --RECORD 12" HEMLOCK S86 1/2°W 8.6 FEET IS A ROOT HOLE.
 MONUMENT IS 0.4 FEET ABOVE GROUND AND LIES ON A VERY STEEP NE SLOPE APPROX 100 FEET SOUTH OF CREEK AND 100 FEET NORTH OF NORTHWEST BEARING RIDGE TOP. MONUMENT LIES 95 FEET EAST OF RIDGETOP ALONG EAST-WEST SECTION LINE.
- 5) NORTH 1/4 OF SECTION 36 T24S R2W GCDB 640200
 FOUND BLM 1951 BRASS CAP MARKED 1/4 S25/S36.
 --40" RECORD DOUGLAS FIR IS NOW HEAVILY DECAYED 6 FOOT-TALL STUB REMAINS WHICH BEAR N31°W 38.3 FEET (RECORD 39.6 FEET) NO MARKS BUT OLD "BT" PAINT
 -- 24" DOUGLAS FIR HEAVILY BURNED SOLID STUMP BEARS S31°E 21.3 FEET WITH NO MARKS REMAINING AND A BURNED BLM TAG WHICH WE NAIL BACK ONTO STUMP ALONG WITH A NEW TAG.
 --16" MAPLE WITH A BURNED-OUT FACE FOUR FOOT HIGH ON TREE BEARS N50°W 21.05 FEET, WE TAG TREE.
 MONUMENT IS 1 FOOT TALL AND BENT TO LEAN TO THE NW ON AN EXTREMELY STEEP BOULDER STREWN ROCKY NORTH SLOPE WHICH WAS HEAVILY BURNED IN THE ARCHIE FIRE. ALL CONIFER TREES WITHIN 150 FEET ARE HEAVILY BURNED OR DOWN. WE PUT 5 FOOT U-POST 0.75 FEET EAST OF WHERE THE PIPE ENTERS THE GROUND. ROCK BLUFF RIDGE POINT BEARS SW 140 FEET ALONG THE SECTION LINE.

LEGEND

○	SET 5/8" X 40" IRON ROD WITH 2 1/2" ALUMINUM CAP MARKED AS NOTED.
●	FOUND 1977 DOUGLAS COUNTY SURVEYOR BRASS CAP AS PER DOUGLAS COUNTY CORNER RENEWAL CS 59/34-5.
⊙	FOUND BLM BRASS CAP MARKED AS NOTED.
⊛	FOUND 1951 GLO BRASS CAP RESET BY DOUGLAS COUNTY SURVEYOR 2020 MARKED AS NOTED.
△	COMPUTED APPROXIMATE ORIGINAL POSITION OF CLOSING CORNER SECTIONS 30 AND 31 FROM BEARING TREE ROOT HOLE
	PROPERTY LINES BLAZED, PAINTED, AND RIBBONED.
---	PROJECTED LINES
< >	GLO 1896 LINES NOTES PAGES 2842-2843 FILED IN THE DOUGLAS COUNTY SURVEYOR'S OFFICE.
{ }	BLM 1951-1963 LINE NOTES PAGE 13285-13286 AND 13290- 13291 FILED IN THE DOUGLAS COUNTY SURVEYOR'S OFFICE

REGISTERED PROFESSIONAL LAND SURVEYOR
Ken W. Hoffine
 OREGON
 JULY 16, 1987
 KEN W. HOFFINE
 2291
 EXPIRES: 6/30/2023

REGISTERED PROFESSIONAL LAND SURVEYOR
Daniel E. Saily
 OREGON
 NOVEMBER 10, 2020
 DANIEL E. SAILY
 85006
 EXPIRES: 6/30/2022



MAP FILE M179-05

MAP FILE M179-05