

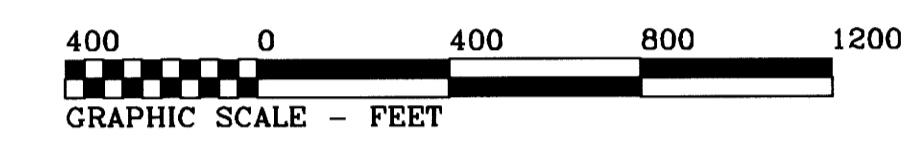
MAP FILE M179-6

FILED  
Date: 3-1-2021 By: Dg  
This survey consists of:  
Map: M179-6  
Narrative:  
Corner Rpt.:

DOUGLAS COUNTY  
SURVEYOR

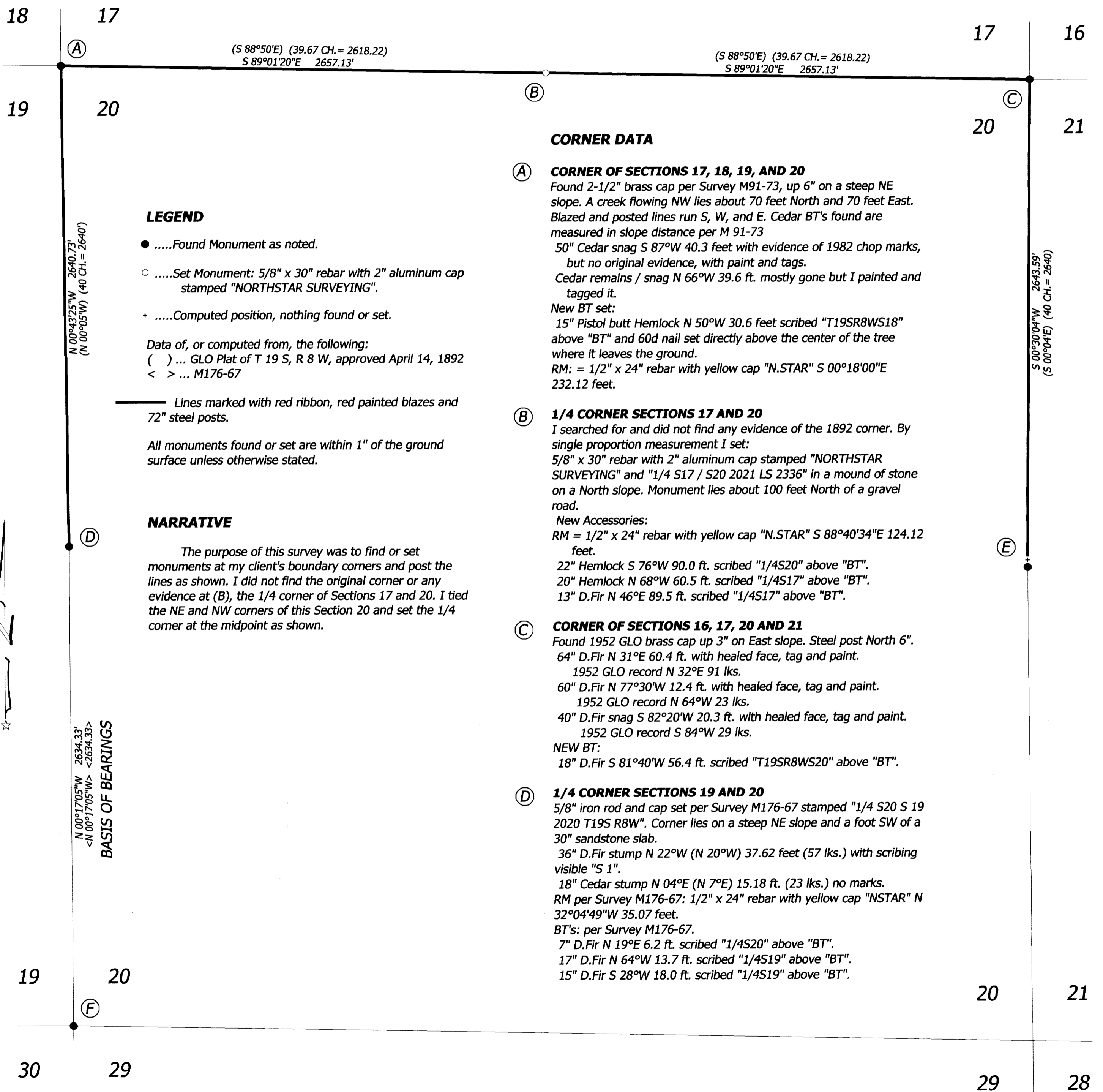
RECORD OF SURVEY  
FOR  
**ROSEBURG FOREST PRODUCTS**  
IN  
SECTION 20  
T 19 S, R 8 W, W.M.  
DOUGLAS COUNTY, OREGON

JANUARY 21, 2021



REGISTERED  
PROFESSIONAL  
LAND SURVEYOR  
*Robert Alan Cook*  
OREGON  
JULY 26, 1988  
ROBERT ALAN COOK  
2336  
RENEWS: 12/31/2021

**Northstar**  
SURVEYING  
720 NW 4TH ST. CORVALLIS, OR 97330  
EMAIL: bcook@northstarsurveying.com  
(541) 757-9050 PROJECT No. 19012  
CABIN RETURN



**LEGEND**

- .....Found Monument as noted.
  - .....Set Monument: 5/8" x 30" rebar with 2" aluminum cap stamped "NORTHSTAR SURVEYING".
  - + .....Computed position, nothing found or set.
- Data of, or computed from, the following:  
( ) ... GLO Plat of T 19 S, R 8 W, approved April 14, 1892  
< > ... M176-67
- Lines marked with red ribbon, red painted blazes and 72" steel posts.
- All monuments found or set are within 1" of the ground surface unless otherwise stated.

**NARRATIVE**

The purpose of this survey was to find or set monuments at my client's boundary corners and post the lines as shown. I did not find the original corner or any evidence at (B), the 1/4 corner of Sections 17 and 20. I tied the NE and NW corners of this Section 20 and set the 1/4 corner at the midpoint as shown.

**CORNER DATA**

- (A) CORNER OF SECTIONS 17, 18, 19, AND 20**  
Found 2-1/2" brass cap per Survey M91-73, up 6" on a steep NE slope. A creek flowing NW lies about 70 feet North and 70 feet East. Blazed and posted lines run S, W, and E. Cedar BT's found are measured in slope distance per M 91-73  
50" Cedar snag S 87°W 40.3 feet with evidence of 1982 chop marks, but no original evidence, with paint and tags.  
Cedar remains / snag N 66°W 39.6 ft. mostly gone but I painted and tagged it.  
New BT set:  
15" Pistol butt Hemlock N 50°W 30.6 feet scribed "T19SR8WS18" above "BT" and 60d nail set directly above the center of the tree where it leaves the ground.  
RM: = 1/2" x 24" rebar with yellow cap "N.STAR" S 00°18'00"E 232.12 feet.
- (B) 1/4 CORNER SECTIONS 17 AND 20**  
I searched for and did not find any evidence of the 1892 corner. By single proportion measurement I set:  
5/8" x 30" rebar with 2" aluminum cap stamped "NORTHSTAR SURVEYING" and "1/4 S17 / S20 2021 LS 2336" in a mound of stone on a North slope. Monument lies about 100 feet North of a gravel road.  
New Accessories:  
RM = 1/2" x 24" rebar with yellow cap "N.STAR" S 88°40'34"E 124.12 feet.  
22" Hemlock S 76°W 90.0 ft. scribed "1/4S20" above "BT".  
20" Hemlock N 68°W 60.5 ft. scribed "1/4S17" above "BT".  
13" D.Fir N 46°E 89.5 ft. scribed "1/4S17" above "BT".
- (C) CORNER OF SECTIONS 16, 17, 20 AND 21**  
Found 1952 GLO brass cap up 3" on East slope. Steel post North 6".  
64" D.Fir N 31°E 60.4 ft. with healed face, tag and paint.  
1952 GLO record N 32°E 91 lks.  
60" D.Fir N 77°30'W 12.4 ft. with healed face, tag and paint.  
1952 GLO record N 64°W 23 lks.  
40" D.Fir snag S 82°20'W 20.3 ft. with healed face, tag and paint.  
1952 GLO record S 84°W 29 lks.  
NEW BT:  
18" D.Fir S 81°40'W 56.4 ft. scribed "T19SR8WS20" above "BT".
- (D) 1/4 CORNER SECTIONS 19 AND 20**  
5/8" iron rod and cap set per Survey M176-67 stamped "1/4 S20 S 19 2020 T19S R8W". Corner lies on a steep NE slope and a foot SW of a 30" sandstone slab.  
36" D.Fir stump N 22°W (N 20°W) 37.62 feet (57 lks.) with scribing visible "S 1".  
18" Cedar stump N 04°E (N 7°E) 15.18 ft. (23 lks.) no marks.  
RM per Survey M176-67: 1/2" x 24" rebar with yellow cap "NSTAR" N 32°04'49"W 35.07 feet.  
BT's: per Survey M176-67.  
7" D.Fir N 19°E 6.2 ft. scribed "1/4S20" above "BT".  
17" D.Fir N 64°W 13.7 ft. scribed "1/4S19" above "BT".  
15" D.Fir S 28°W 18.0 ft. scribed "1/4S19" above "BT".

**CORNER DATA**

- (E) 1/4 CORNER SECTIONS 20 AND 21 (Witness Corner)**  
Found 5/8" rebar per Survey M174-18, on line S 00°11'56"E 95.00 feet on the ridge. A steel post was driven 0.5' West.  
BT's per Survey M174-18:  
17" Hemlock N 52°E 8.8 ft. scribed "WC" above "BT".  
16" D.Fir S 47°E 6.8 ft. scribed "WC" above "BT".  
21" D.Fir S 12°E 15.1 ft. scribed "WC" above "BT".  
18" D.Fir S 52°W 18.5 ft. scribed "WC" above "BT".
- (F) CORNER OF SECTIONS 19, 20, 29 AND 30**  
5/8" rod with 2" aluminum cap per Survey M-176-67 stamped "T19S R8W S19 S20 S28 S29 LS 2336 2019" on a steep Northeast slope about 100' West of a ravine.  
BT's per Survey M176-67:  
14" Cedar N 11°E 52.3 ft. scribed "T19SR8WS20" above "BT".  
20" D.Fir N 33°W 30.8 ft. scribed "T19SR8WS19"BT" (scribes face West)  
10" D.Fir S 51°W 8.4 ft. scribed T19SR8WS30" above "BT".  
20" Maple NORTH 99.9 ft. scribed "X" above "BT"

MAP FILE M179-6