

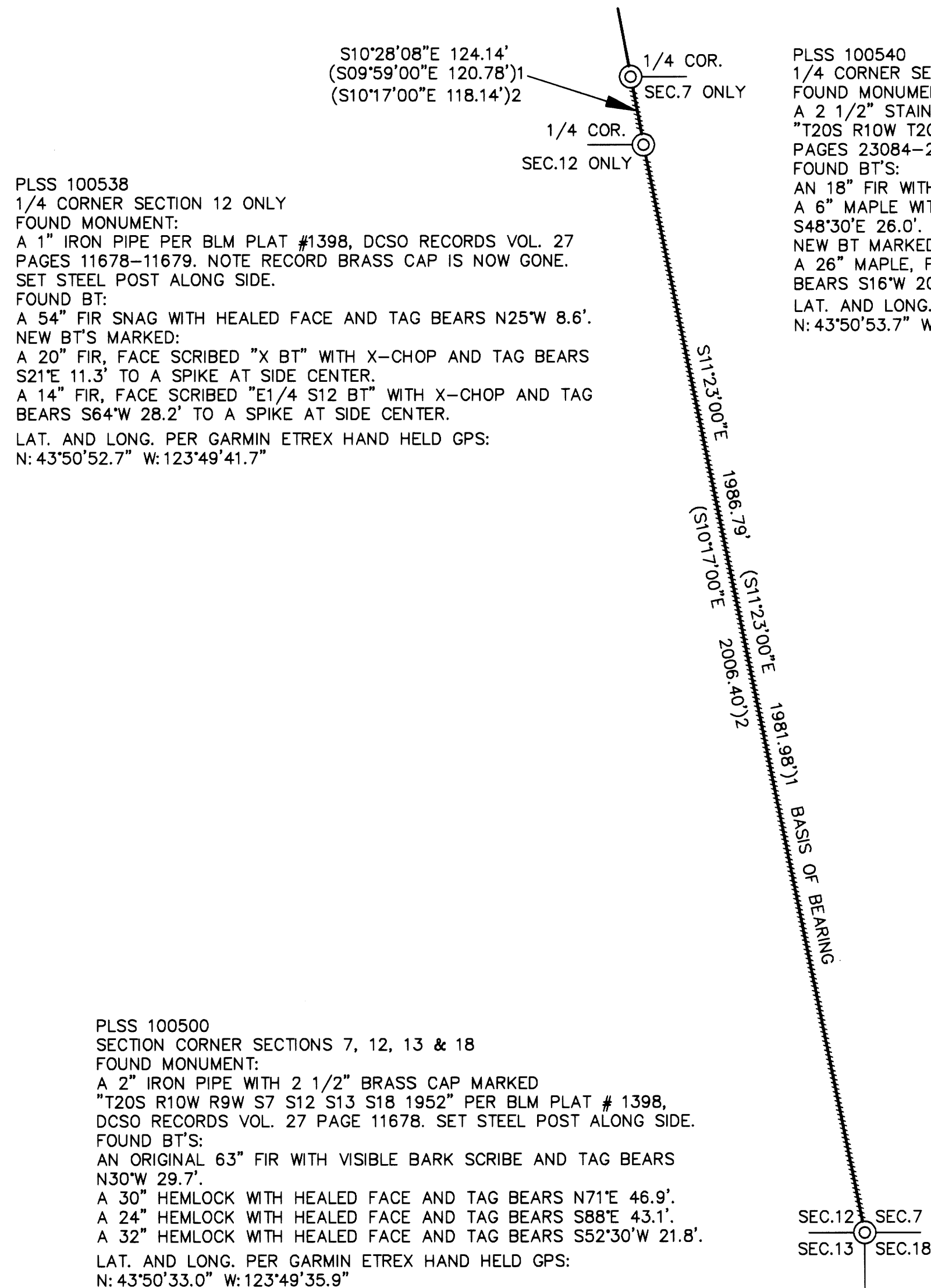
PROPERTY SURVEY LOCATED IN THE SW1/4 OF SECTION 7,
TOWNSHIP 20 SOUTH, RANGE 9 WEST, W.M., DOUGLAS COUNTY, OREGON.

FILED
Date: 6/14/2021 By: JLE
This survey consists of:
Map: M179-43
Narrative:
Corner Rpt:
DOUGLAS COUNTY
SURVEYOR

SURVEY FOR: ROSEBURG RESOURCES CO.
PO BOX 1088, ROSEBURG, OR 97470
SURVEY BY: ESTABROOK LAND SURVEYING, INC.
PO BOX 574, LAKESIDE, OR 97449



SCALE 1" = 200'



PLSS 100538
1/4 CORNER SECTION 12 ONLY
FOUND MONUMENT:
A 1" IRON PIPE PER BLM PLAT #1398, DCSO RECORDS VOL. 27 PAGES 11678-11679. NOTE RECORD BRASS CAP IS NOW GONE. SET STEEL POST ALONG SIDE.
FOUND BT:
A 54" FIR SNAG WITH HEALED FACE AND TAG BEARS N25°W 8.6'.
NEW BT'S MARKED:
A 20" FIR, FACE SCRIBED "X BT" WITH X-CHOP AND TAG BEARS S21°E 11.3' TO A SPIKE AT SIDE CENTER.
A 14" FIR, FACE SCRIBED "E1/4 S12 BT" WITH X-CHOP AND TAG BEARS S64°W 28.2' TO A SPIKE AT SIDE CENTER.
LAT. AND LONG. PER GARMIN ETREX HAND HELD GPS:
N: 43°50'52.7" W: 123°49'41.7"

PLSS 100540
1/4 CORNER SECTION 7 ONLY
FOUND MONUMENT:
A 2 1/2" STAINLESS STEEL PIPE WITH 3 1/2" BRASS CAP MARKED "T20S R10W T20S R9W 1/4 S7 2006" PER DCSO RECORDS VOL. 58 PAGES 23084-23085. SET STEEL POST ALONG SIDE.
FOUND BT'S:
AN 18" FIR WITH HEALED FACE AND TAG N26°E 16.9'.
A 6" MAPLE WITH VISIBLE SCRIBE IN FACE AND TAG BEARS S48°30'E 26.0'.
NEW BT MARKED:
A 26" MAPLE, FACE SCRIBED "X BT" WITH X-CHOP AND TAG BEARS S16°W 20.1' TO A SPIKE AT SIDE CENTER.
LAT. AND LONG. PER GARMIN ETREX HAND HELD GPS:
N: 43°50'53.7" W: 123°49'41.7"

NARRATIVE

THE PURPOSE OF THIS SURVEY WAS TO MARK BOUNDARY LINES FOR RESOURCE MANAGEMENT PURPOSES.
THE PROCEDURE WAS TO TRAVERSE BETWEEN EXISTING RECORD MONUMENTS AS SHOWN HEREON. I THEN MARKED THE BOUNDARY LINES WITH RED FLAGGING, BLAZES PAINTED RED AND STEEL POSTS. EQUIPMENT USED WAS A NIKON NIVO 5.C TOTAL STATION WITH ONBOARD TDS DATA COLLECTOR. ASSISTING PERSONNEL WERE BLUE JAMES, JACK JARRETT AND DANIEL TIEMISSEN.
NOTE: WGS84 LATITUDE AND LONGITUDE ARE PER GARMIN ETREX HAND HELD GPS. THESE POSITIONS ARE NOT SURVEY GRADE AND SHOULD NOT BE USED TO ESTABLISH BOUNDARIES, BUT ARE PROVIDED TO ASSIST IN RESOURCE MANAGEMENT.

BASIS OF BEARING

BASIS OF BEARING IS ASSUMED PER BLM PLAT #1398.

RECORD REFERENCE INFORMATION

BLM PLAT #1398, DATED MARCH 18, 1954.
GLO PLAT #1248, DATED JUNE 30' 1922.

LEGEND

- ⊙ FOUND MONUMENT AS NOTED
- ▬ BOUNDARY LINE MARKED WITH RED FLAGGING, RED TREE BLAZES AND STEEL POSTS.
- ()1 RECORD PER BLM PLAT #1398
- ()2 RECORD PER GLO PLAT #1248

PLSS 100500
SECTION CORNER SECTIONS 7, 12, 13 & 18
FOUND MONUMENT:
A 2" IRON PIPE WITH 2 1/2" BRASS CAP MARKED "T20S R10W R9W S7 S12 S13 S18 1952" PER BLM PLAT # 1398, DCSO RECORDS VOL. 27 PAGE 11678. SET STEEL POST ALONG SIDE.
FOUND BT'S:
AN ORIGINAL 63" FIR WITH VISIBLE BARK SCRIBE AND TAG BEARS N30°W 29.7'.
A 30" HEMLOCK WITH HEALED FACE AND TAG BEARS N71°E 46.9'.
A 24" HEMLOCK WITH HEALED FACE AND TAG BEARS S88°E 43.1'.
A 32" HEMLOCK WITH HEALED FACE AND TAG BEARS S52°30'W 21.8'.
LAT. AND LONG. PER GARMIN ETREX HAND HELD GPS:
N: 43°50'33.0" W: 123°49'35.9"

REGISTERED
PROFESSIONAL
LAND SURVEYOR

Jerry Lee Estabrook

OREGON
JUNE 30, 1995
JERRY LEE ESTABROOK
2703

EXPIRES 12/31/21

DRAWN BY: JLE	DATE: 5/18/2021
CHECKED BY: TJE	DRAWING NO.: COON7
JOB NO.: 2021-53	SHEET 1 OF 1

MAP FILE M179-43

MAP FILE M179-43