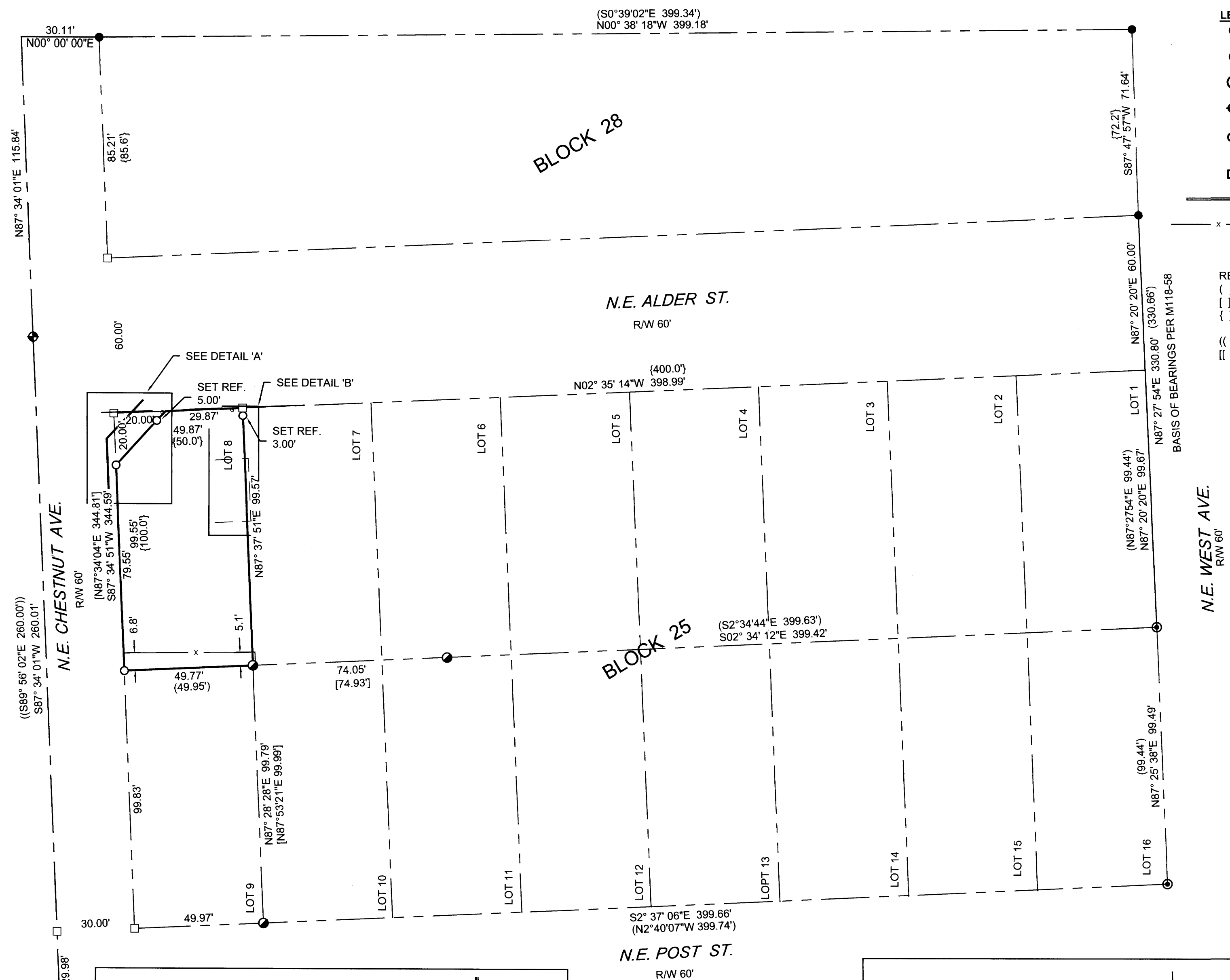


MAP FILE M179-15

FILED
Date: 3-15-2021 By: 88
This survey consists of:
Map: M179-15
Narrative:
Corner Rpt:
DOUGLAS COUNTY
SURVEYOR



- LEGEND**
- FOUND 5/8" IRON ROD PER M86-9
 - FOUND 5/8" IRON ROD PER CS55/311-2
 - ⊙ FOUND 5/8" IRON ROD PER M118-58
 - ◆ FOUND 2" BRASS CAP IN MONUMENT BOX
 - SET 5/8" x 30" IRON ROD W/ PLASTIC CAP STAMPED "LAND MARK SURVEYING, INC."
 - CALCULATED POINT
 - EXISTING BLOCK WALL
 - x EXISTING WIRE FENCE
 - EXISTING NATURAL GAS LOCATE

RECORD INFORMATION

- () M118-58
- [] M86-9
- { } RIVERSIDE ADDITION TO ROSEBURG, VOL. 1, PG. 10
- (()) M139-1
- [[] Deed Ref. #99-8256

NARRATIVE:
PURPOSE: MONUMENT THE CORNERS OF LOT 8, BLOCK 25, RIVERSIDE ADDITION TO ROSEBURG.

PROCEDURE: THE SOUTHWEST CORNER OF LOT 8 WAS SET PREVIOUSLY PER M86-9 AS THE NE CORNER OF LOT 10 AND WAS HELD.

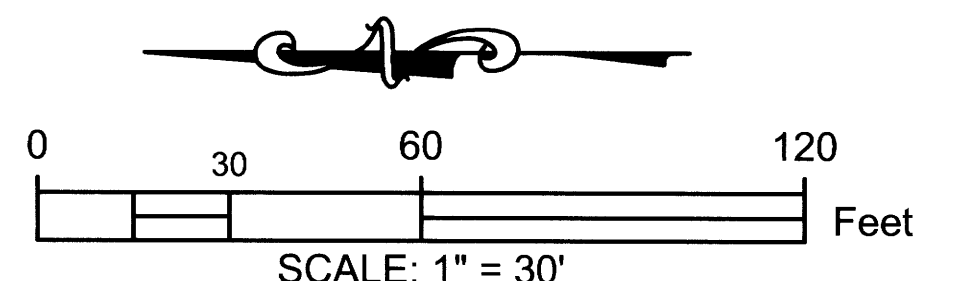
THE NW CORNER OF LOT 8 WAS COMPUTED BY PROJECTING THE LINE FROM THE SE CORNER OF LOT 16 PER M118-58 AND THE NE CORNER OF LOT 10 TO INTERSECT THE NORTH LINE OF BLOCK 25

THE NORTHWEST CORNER OF THE BLOCK WAS CALCULATED HOLDING THE S.W. CORNER OF LOT 16 PER M118-58 AND THE N.W. CORNER OF LOT 9, BLOCK 25 PER M86-9 AND PROJECTING TO INTERSECT A LINE 30 FEET SOUTHERLY OF THE CENTERLINE OF NE CHESTNUT AVE. AS DETERMINED BY THE 2 STREET MONUMENTS PER M139-1.

THE NORTH LINE OF BLOCK 25 WAS COMPUTED HOLDING THE CALCULATED NW CORNER AND THE NE CORNER OF BLOCK 28 PER CS55/311-2. THE NW CORNER OF LOT 8, BLOCK 25 WAS CALCULATED BY PROJECTING THE LINE BETWEEN THE SE CORNER OF LOT 16 AND THE NE CORNER OF LOT 10 TO INTERSECT THE NORTH BOUNDARY OF BLOCK 25. THE NE CORNER OF LOT 8 WAS CALCULATED AT PROPORTIONATE DISTANCE BETWEEN THE CALCULATED NW CORNER OF LOT 8 AND THE NE CORNER OF BLOCK 28. THE CORNERS PER DEED REFERENCE NO. 99-8256 WERE MONUMENTED AT RECORD DISTANCE PER THE DEED.

THE SE CORNER OF LOT 8 WAS COMPUTED BY ESTABLISHING THE SE CORNER OF BLOCK 25 ON LINE BETWEEN THE SE CORNER OF LOT 16 AND THE SW CORNER OF BLOCK 28 60' WEST. THE SE CORNER OF LOT 8 WAS COMPUTED AT PROPORTIONATE DISTANCE ALONG THE COMPUTED EAST LINE OF BLOCK 25.

FIELD CREW: A WELCH & Z HOLLAND
EQUIPMENT: TRIMBLE S6 TOTAL STATION



Sheet 1 of 1
RECORD OF SURVEY
OF LOT 8, BLOCK 25, RIVERSIDE ADDITION TO ROSEBURG
IN THE N.E. 1/4, SEC. 13, T.27 S., R.6 W., W.M.
Douglas County, Oregon
MAR. 3, 2021

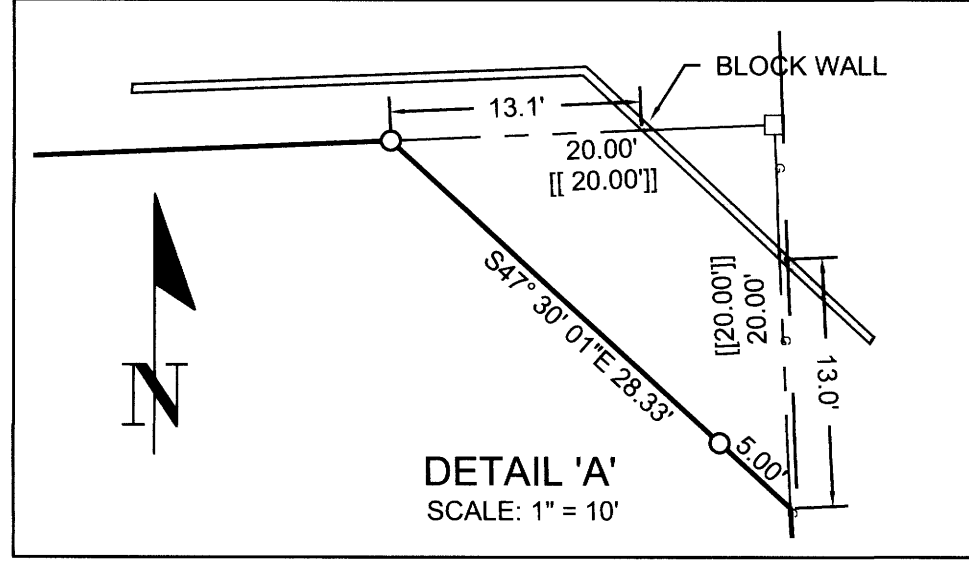
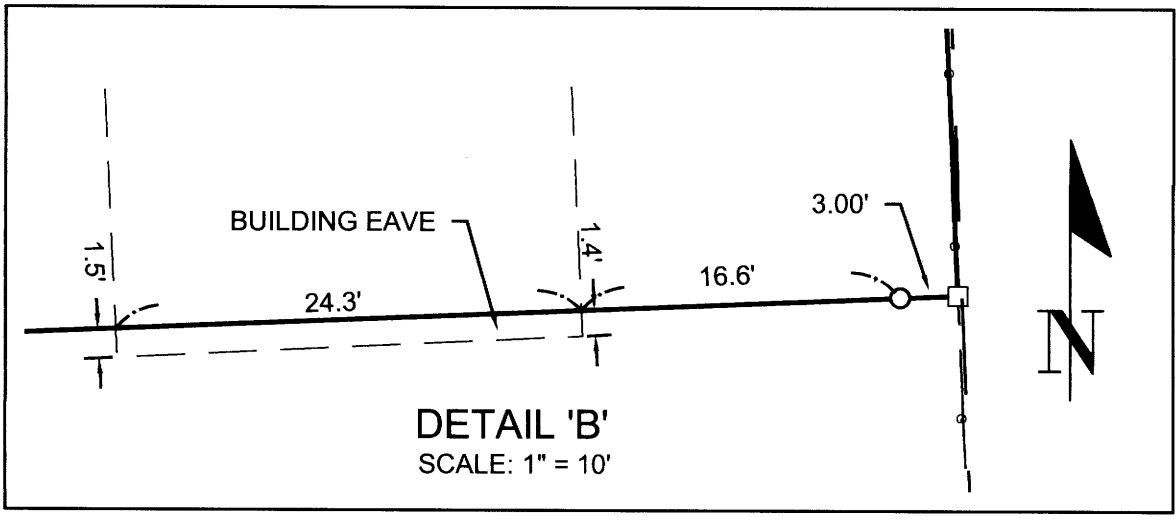
REGISTERED
PROFESSIONAL
LAND SURVEYOR
Mark A. Heimburger
OREGON
JULY 16, 1987
MARK A. HEIMBURGER
2287
RENEWS JUNE 30, 2021

FOR: Jeff Wickstrom
3267 W Normandy Ave.
Roseburg, OR 97471

LM Land Mark
Surveying, Inc.

•3317 N.E. Stephens St. •Roseburg, Oregon 97470
•Office (541) 677-9400 •Fax (541) 677-9401

LM Proj. No. 2021-0012



MAP FILE M179-15