

RECORD OF SURVEY

LOCATED IN
SECTION 9, T.33S., R.6W., W.M.
DOUGLAS CO. & JOSEPHINE CO., OREGON

FILED
Date: 8-21-2020 By: [Signature]
This Survey Consists of:
Map: M178-8
Narrative:
Corner Rpt.:
DOUGLAS COUNTY
SURVEYOR

CORNER DESCRIPTIONS:

ALL NEW BEARING TREES HAVE DOUBLE BLAZED FACES WITH A BRASS WASHER STAMPED "BADGLEY PLS70716" NAILED INTO THE LOWER BLAZE. BEARINGS ARE TAKEN TO THE CENTER OF THE TREE AT THE ROOT CROWN AND DISTANCES ARE MEASURED TO A NAIL IN THE ROOT CROWN AT THE SIDE AND CENTER OF THE TREE WITH A TOTAL STATION. ALL BEARING TREES HAVE A 6" ORANGE BAND PAINTED AROUND THE TREE AND THE BLAZED FACE PAINTED ORANGE AND BEARING TREE SIGNS NAILED TO THE TREE.

- 1/4 S9/S10 PLSS ID NO. T33SR6W 400540
FD. A 2 1/2" USBLM STAINLESS STEEL POST BY FRANCIS J. SIMON IN 1994 PER GROUP #1736, FIRMLY SET AND PROJECTING 4" ABOVE THE GROUND, WITH A 3 1/4" BRASS CAP PROPERLY MARKED AND REFERENCES PER THE RECORD.
- S 1/16 S9/S10 PLSS ID NO. T33SR6W 400520
FD. A 2 1/2" USBLM STAINLESS STEEL POST BY FRANCIS J. SIMON IN 1994 PER GROUP #1736, FIRMLY SET AND PROJECTING 6" ABOVE THE GROUND, WITH A 3 1/4" BRASS CAP PROPERLY MARKED AND REFERENCES PER THE RECORD.
- CORNER S9/S10/S15/S16 PLSS ID NO. T33SR6W 400500
FD. A 2 1/2" USBLM STAINLESS STEEL POST BY FRANCIS J. SIMON IN 1994 PER GROUP #1736, FIRMLY SET AND PROJECTING 6" ABOVE THE GROUND, WITH A 3 1/4" BRASS CAP PROPERLY MARKED AND REFERENCES PER THE RECORD.
- 1/4 S9/S16 PLSS ID NO. T33SR6W 340500
FD. A 2 1/2" USBLM STAINLESS STEEL POST BY FRANCIS J. SIMON IN 1994 PER GROUP #1736, FIRMLY SET AND PROJECTING 4" ABOVE THE GROUND, WITH A 3 1/4" BRASS CAP PROPERLY MARKED AND REFERENCES PER THE RECORD.
- 1/4 S4/S9 PLSS ID NO. T33SR6W 340600
FD. A 2 1/2" USBLM STAINLESS STEEL POST BY FRANCIS J. SIMON IN 1994 PER GROUP #1736, FIRMLY SET AND PROJECTING 4" ABOVE THE GROUND, WITH A 3 1/4" BRASS CAP PROPERLY MARKED PER THE RECORD:

FROM WHICH THE REMAINS OF AN ORIGINAL BEARING TREE:
A 36" PINE STUMP BEARS N.50°30'E., 22.0 FT W/BURNED BLAZE (N.54°E., 21.8')R2 (N.54°E., 33 LKS)R1 & R4
AND BEARING TREES BY WENDEROTH IN 1962 PER C.S. 52/137:
A 16" CHINQUAPIN BEARS N.01°00'E., 33.3 FT W/HEALED BLAZE (N.2°05'E., 33.7')R2 (NORTH 33.5')R3 (N.0 3/4"E., 51 LKS)R4
A 11" MADRONE BEARS S.66°15'E., 31.4 FT W/PART. HEALED DBL BLAZE (S.64°43'E., 32.0')R2 (S.64°E., 32.0')R3 (S.66 1/4"E., 47 LKS)R4

AND NEW BEARING TREE:
A 17" D. FIR BEARS N.85°15'W., 14.2 FT SCRIBED "1/4 S4 BT" ON DBL BLAZE

THE 3/4" IRON ROD WITH PULLEY ON TOP BEARS N.211°13'E., 5.91 FT (N.0 1/4"E., 0.09 CHS)R4
- C1/4 S9 PLSS ID NO. T33SR6W 340540
FD. A 2 1/2" USBLM STAINLESS STEEL POST BY FRANCIS J. SIMON IN 1994 PER GROUP #1736, FIRMLY SET AND PROJECTING 2" ABOVE THE GROUND, WITH A 3 1/4" BRASS CAP PROPERLY MARKED PER THE RECORD:

FROM WHICH THE 1994 BEARING TREES:
A 12" D. FIR BEARS N.88°45'E., 26.2 FT W/PARTIALLY HEALED DOUBLE BLAZE (N.88 1/4"E., 39 1/2 LKS)R4
A 16" D. FIR BEARS N.26°15'W., 8.4 FT W/PARTIALLY HEALED DOUBLE BLAZE (N.27°W., 13 LKS)R4
AND NEW REFERENCE MONUMENTS:
A 5/8" x 30" IRON ROD WITH 2" BTS ALUM. CAP STAMPED "RM 1 2020" BEARS S.67°33'18"E., 25.99 FEET
A 5/8" x 30" IRON ROD WITH 2" BTS ALUM. CAP STAMPED "RM 2 2020" BEARS S.55°55'16"W., 15.47 FEET
- CE 1/16 S9 PLSS ID NO. T33SR6W 360540
FD. A 5/8" IRON ROD BY H. FARBER IN 2017 PER M 173-44, FIRMLY SET AND PROJECTING 1" ABOVE THE GROUND, WITH A YELLOW PLASTIC CAP MARKED "FARBER PLS2189". I DO NOT ACCEPT THIS MONUMENT AS BEING SET AT THE CORRECT LOCATION AND I DRIVE BELOW THE SURFACE.

AT THE CORRECT LOCATION I SET A 5/8" X 30" IRON ROD, 26" IN THE GROUND WITH A 2" ALUMINUM CAP MARKED:

FROM WHICH BEARING TREES BY FARBER:
A 10" MADRONE BEARS S.65°45'E., 10.5 FT W/VISIBLE SCRIBE & PARTIALLY HEALED BLAZE (S.69°54'29"E., 9.62')R5
A 18" MADRONE BEARS S.41°30'W., 20.8 FT W/VISIBLE SCRIBE & PARTIALLY HEALED BLAZE (S.43°05'40"W., 19.88')R5

THE M 173-44 MONUMENT BEARS S.15°55'04"E., 0.90 FEET
- SE 1/16 S9 PLSS ID NO. T33SR6W 360520
FD. A 5/8" IRON ROD BY H. FARBER IN 2017 PER M 173-44, LOOSELY SET AND PROJECTING 7" ABOVE THE GROUND, WITH A YELLOW PLASTIC CAP MARKED "FARBER PLS2189". I DO NOT ACCEPT THIS MONUMENT AS BEING SET AT THE CORRECT LOCATION AND I DRIVE BELOW THE SURFACE.

AT THE CORRECT LOCATION I SET A 5/8" X 30" IRON ROD, 26" IN THE GROUND, WITH A 2" ALUMINUM CAP MARKED:

FROM WHICH BEARING TREES BY FARBER:
A 20" D. FIR BEARS S.17°15'E., 21.1 FT W/VISIBLE SCRIBE & PARTIALLY HEALED BLAZE (S19°27'28"E., 19.96')R5
A 13" MADRONE BEARS S.44°00'W., 31.5 FT W/VISIBLE SCRIBE & PARTIALLY HEALED BLAZE (S.44°03'16"W., 30.54')R5

THE M 173-44 MONUMENT BEARS S.29°49'21"W., 0.98 FEET
- CS 1/16 S9 PLSS ID NO. T33SR6W 340520
FD. A 2 1/2" USBLM STAINLESS STEEL POST BY FRANCIS J. SIMON IN 1994 PER GROUP #1736, FIRMLY SET AND PROJECTING 4" ABOVE THE GROUND, WITH A 3 1/4" BRASS CAP PROPERLY MARKED PER THE RECORD:

FROM WHICH THE 1994 BEARING TREES:
A 28" D. FIR BEARS S.30°00'E., 37.3 FT W/PARTIALLY HEALED DOUBLE BLAZE (S.30 1/4"E., 56 1/2 LKS)R4
A 12" D. FIR BEARS N.58°30'W., 7.6 FT W/PARTIALLY HEALED DOUBLE BLAZE (N.58 1/2"W., 11 1/2 LKS)R4
- SW 1/16 S9 PLSS ID NO. T33SR6W 320520
FD. A 2 1/2" USBLM STAINLESS STEEL POST BY FRANCIS J. SIMON IN 1994 PER GROUP #1736, FIRMLY SET 2" BELOW THE SURFACE, WITH A 3 1/4" BRASS CAP PROPERLY MARKED PER THE RECORD:

FROM WHICH THE 1994 BEARING TREES:
A 17" HEMLOCK BEARS S.24°45'E., 83.6 FT W/PARTIALLY HEALED DOUBLE BLAZE (S.24 3/4"E., 127 LKS)R4
A 19" HEMLOCK BEARS S.13°45'W., 66.8 FT W/PARTIALLY HEALED DOUBLE BLAZE (S.13 1/2"W., 101 1/2 LKS)R4

CORNER FALLS IN THE EASTERLY SHOULDER OF A GRAVEL ROAD, 2" BELOW THE ROAD SURFACE.

NARRATIVE:

THE PURPOSE OF THIS SURVEY IS TO MARK A PORTION OF THE BOUNDARY OF WEYERHAEUSER CO. PROPERTY LOCATED IN SECTION 9, TOWNSHIP 33 SOUTH, RANGE 6 WEST, W.M., FOR TIMBER MANAGEMENT PURPOSES.

THIS SURVEY IS CONTROLLED BY THE 1994 USBLM DEPENDENT RESURVEY AND SUBDIVISION OF SECTION 9. I ACCEPT THE CONTROLLING CORNERS AS MONUMENTED OR RESTORED BY THE BLM.

DURING THE RETRACEMENT SURVEY AROUND THE NE1/4 OF THE SE1/4, I DISCOVER SIGNIFICANT ERRORS IN THE RECORD MEASUREMENTS OF THE 2017 SURVEY M 173-44, BY HERBERT FARBER, PLS 2189. I MEASURE ±4 FEET LONGER THAN THE M 173-44 RECORD BETWEEN THE CS 1/16 AND THE SE 1/16, AND ±1 FOOT LONGER BETWEEN THE C 1/4 AND THE CE 1/16. SINCE THERE APPEARED TO BE GROSS ERROR IN THE FARBER SURVEY, I SURVEY AND TIE THE CONTROLLING CORNERS AROUND THE SE 1/4 OF SECTION 9. I MATCH THE 1994 BLM RECORDS VERY WELL, AND THE M 173-44 RECORDS ON THE EAST AND SOUTH LINES. HOWEVER, THE M 173-44 ERRORS APPEAR IN ITS CONTROL SURVEY LOCATION OF THE C 1/4 AND CS 1/16. THERE IS NO EVIDENCE OF ANY RECENT TRADITIONAL TRAVERSE INTO THESE CORNERS, AND BOTH ARE LOCATED IN AREAS WITH TOO MUCH TREE COVER FOR OPTIMAL GPS ONLY CONTROL TIES. THEREFORE, BECAUSE OF GROSS ERROR, I REJECT THE M 173-44 MONUMENTS AND RE-SUBDIVIDE THE SE 1/4 OF SECTION 9, RE-MONUMENTING THE SE 1/16 AND CE 1/16 CORNERS AT THEIR TRUE LOCATIONS. I DRIVE THE REJECTED M 173-44 MONUMENTS BELOW THE GROUND SURFACE. THE ACTUAL TRUE LINE FALLS VERY CLOSE TO THE M 173-44 LOCATION IN EASTING, MOVING ±0.25 FEET WEST AT THE CE 1/16, AND ±0.48 FEET EAST AT THE SE 1/16. M 173-44 DID NOT SET STEEL POSTS, ONLY BLAZING AND FLAGGING THE BOUNDARY.

I POST AND MARK THE BOUNDARY AS SHOWN WITH 5 1/2" STEEL POST PAINTED ORANGE WITH ORANGE FLAGGING, AND QUARTER BLAZE TREES WITHIN 3-5 FEET OF LINE, BLAZES PAINTED ORANGE. I NAIL YELLOW WEYCO STUMP TAGS ON WEYERHAEUSER TREES, BELOW STUMP HEIGHT FACING THE BOUNDARY.

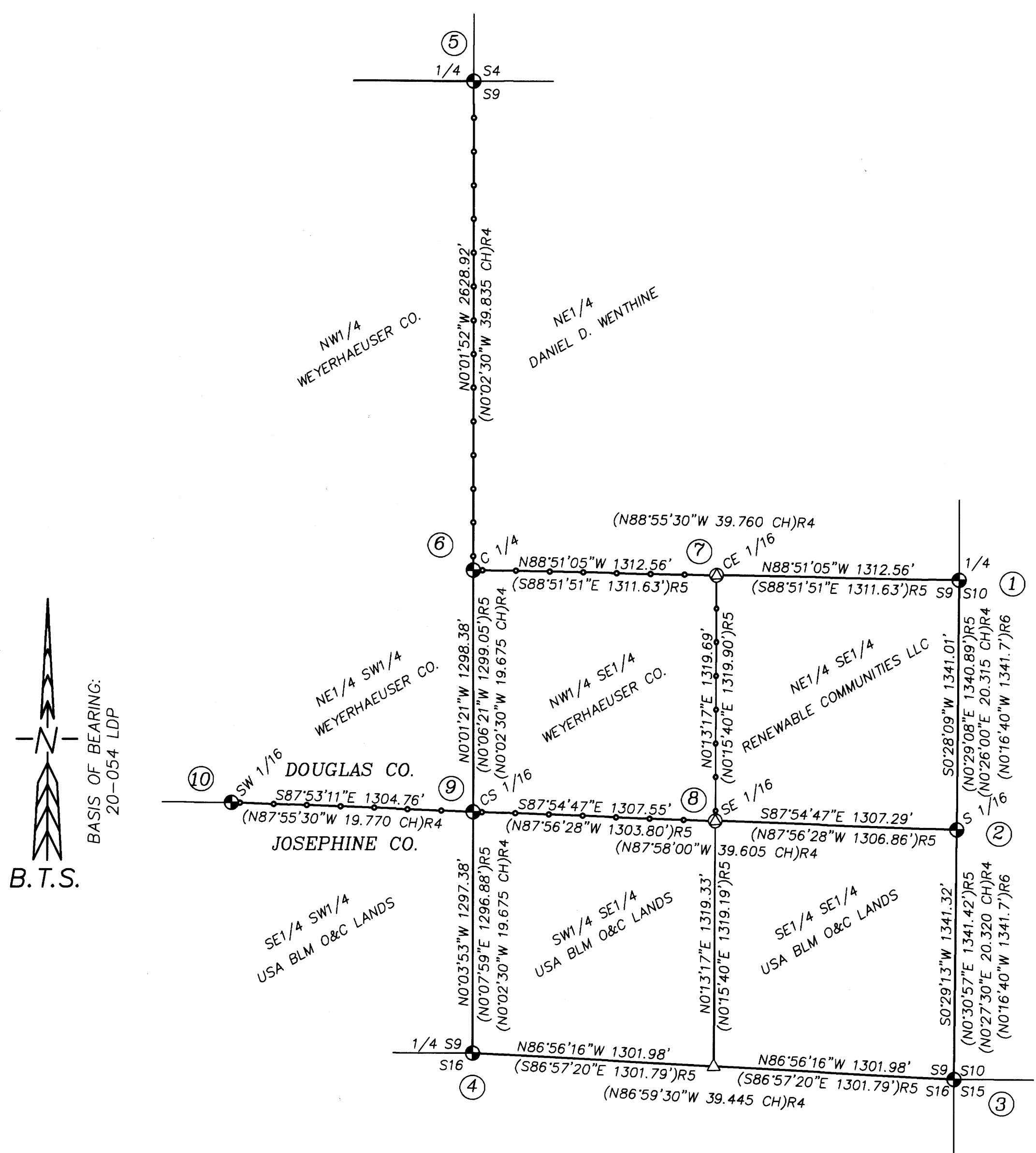
THIS SURVEY WAS PERFORMED IN THE FIELD FROM JULY 7, 2020 TO AUGUST 3, 2020 BY RUSSELL BADGLEY, WYATT KEADY, ZACH HOLLAND, JAKE BUZZARD, AND ALLYN ST.ONGE, WITH COMPUTATIONS AND DRAFTING BY ADAM DEGROOT AND RUSSELL BADGLEY.

SURVEY CONTROL PROCEDURE:

A STATIC GPS NETWORK SURVEY WAS PERFORMED UTILIZING LEICA 1200 GPS RECEIVERS, AND CONTROLLED BY AN NGS OPUS SOLUTION ON A PROJECT CONTROL POINT. THE RESULTING GEODETIC COORDINATES WERE PROJECTED INTO THE BELOW DEFINED COORDINATE SYSTEM. POSTED LINES AND CONTROLLING CORNERS WERE TIED BY CONVENTIONAL TRAVERSE WITH A LEICA TS15 & LEICA TC1203 TOTAL STATIONS FROM THE STATIC OR RTK GPS CONTROL POINTS, AND ADJUSTED IN LEICA GEO OFFICE BY THE METHOD OF LEAST SQUARES.

COORDINATE SYSTEM NAME: 20-054 LDP
PROJECTION: TRANSVERSE MERCATOR
REFERENCE DATUM: NAD 83 (2011) (EPOCH 2010.00)
ELLIPSOID: GRS 1980
LATITUDE OF GRID ORIGIN: 42° 43' 30"N
CENTRAL MERIDIAN: 123° 25' 00"W
FALSE NORTHING: 50,000.00 IFT
FALSE EASTING: 150,000.00 IFT
CENTRAL MERIDIAN SCALE: 1.000087816

NAD83 (2011) EPOCH 2010.00 GEODETIC COORDINATES:	CORNER NO.	LATITUDE	LONGITUDE
1 - 400540	42°43'03.54624"N	123°24'22.52335"W	
2 - 400520	42°42'50.30180"N	123°24'22.67260"W	
3 - 400500	42°42'37.05440"N	123°24'22.82745"W	
4 - 340500	42°42'38.42999"N	123°24'57.65206"W	
5 - 340600	42°43'30.03292"N	123°24'57.69718"W	
6 - 340540	42°43'04.06770"N	123°24'57.67831"W	
7 - 360540	42°43'03.80734"N	123°24'40.10081"W	
8 - 360520	42°42'50.77318"N	123°24'40.17027"W	
9 - 340520	42°42'51.24392"N	123°24'57.67160"W	
10 - 320520	42°42'51.71896"N	123°25'15.13537"W	



- LEGEND:**
- = FOUND PLSS MONUMENT AS NOTED IN THE CORNER DESCRIPTIONS
 - ⊙ = SET 5/8" x 30" IRON ROD WITH 2" ALUMINUM CAP STAMPED AS NOTED
 - △ = COMPUTED POINT NOT SET
 - ()R# = DIMENSION PER RECORD REFERENCE NUMBER
 - # = CORNER NOTE REFERENCE NUMBER
 - = POSTED BOUNDARY LINE WITH 5 1/2" STEEL POSTS
 - = CONTROLLING LINE NOT RAN OR POSTED

- RECORDS:**
- R1 = USGLO ORIGINAL SURVEY OF T.33S., R.6W. ~ LAKE & HYDE - CONTRACT NO. 54 - 1855
 - R2 = C.S. FILE NO. 52/137 ~ GEORGE WENDEROTH - 1962
 - R3 = M 49-21 & C.S. FILE NO. 55/294 ~ RONALD BRANDT - 1973
 - R4 = USBLM DEPENDENT RESURVEY BY FRANCIS J. SIMON, GROUP #1736, PLAT NO. 6758 - 1994
 - R5 = M 173-44 ~ HERBERT FARBER - 2017
 - R6 = M 30-50 ~ MILNER LARSON - 1965

REGISTERED
PROFESSIONAL
LAND SURVEYOR
[Signature]
OREGON
NOVEMBER 13, 2007
RUSSELL BADGLEY
70716
RENEWS: 12-31-2021

BTS SURVEYING, INC.
348 SE JACKSON ST., ROSEBURG, OR 97470
(541) 673-0966 adam@btssurveying.com

SCALE: 1" = 500'	FOR: WEYERHAEUSER CO. MILL CREEK, MEWSHED 9 GLENDALE, OR	JOB #: 20-054 FILE: MILL CREEK S9.DWG SHEET 1 OF 1
DATE: AUGUST 12, 2020		