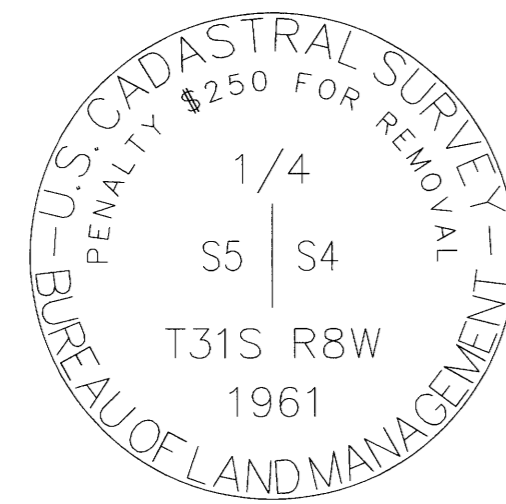
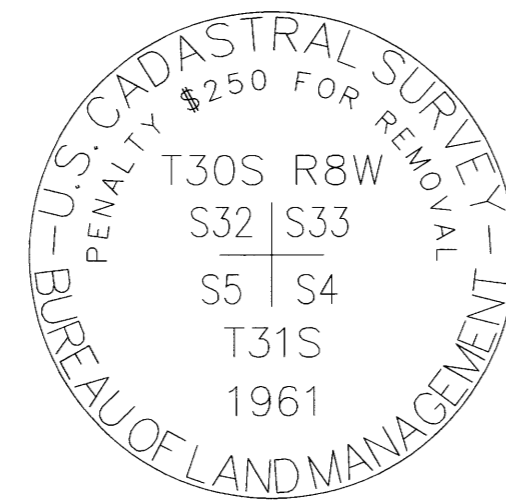


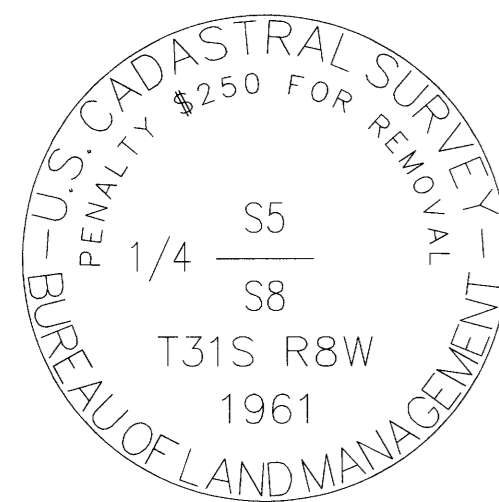
POINT NUMBER: 200



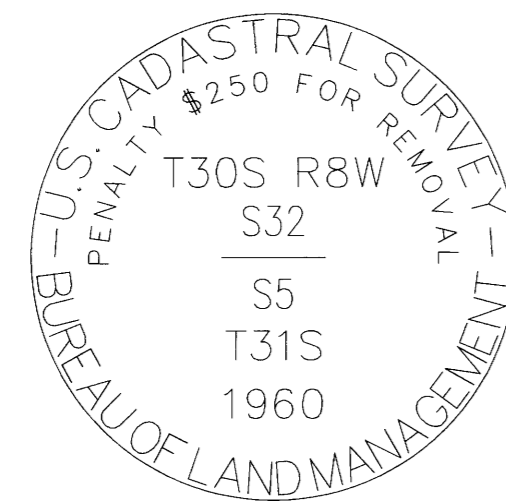
POINT NUMBER: 201



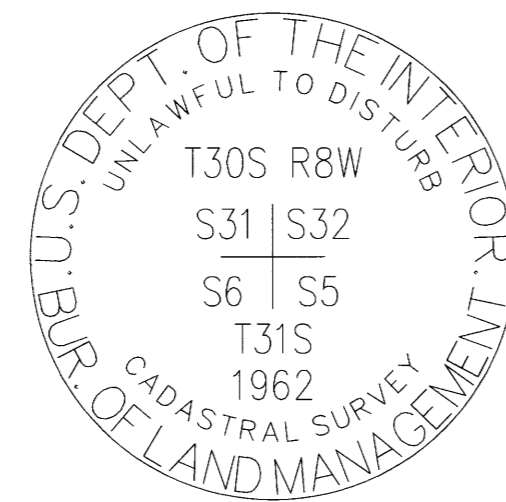
POINT NUMBER: 202



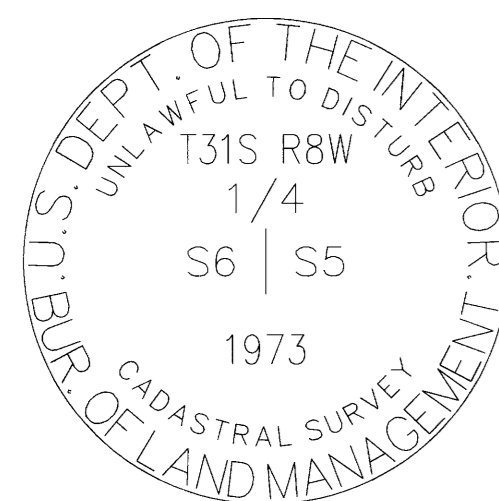
POINT NUMBER: 203



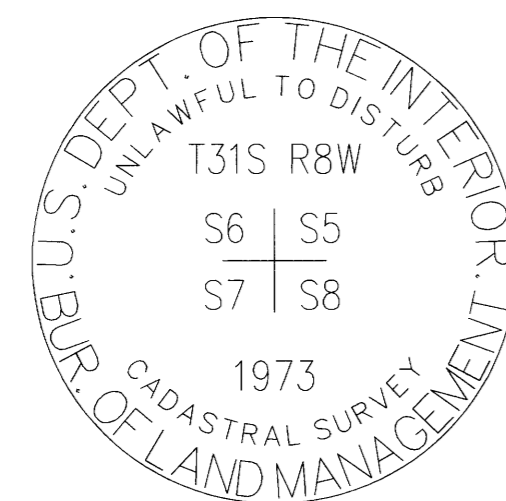
POINT NUMBER: 204



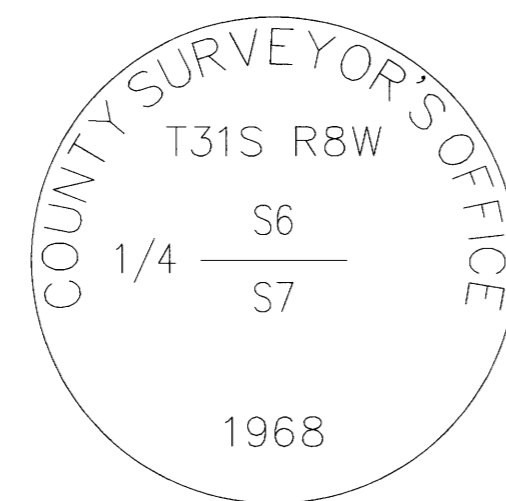
POINT NUMBER: 205



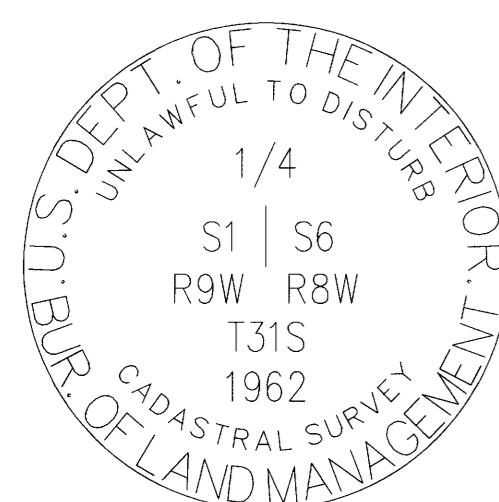
POINT NUMBER: 206



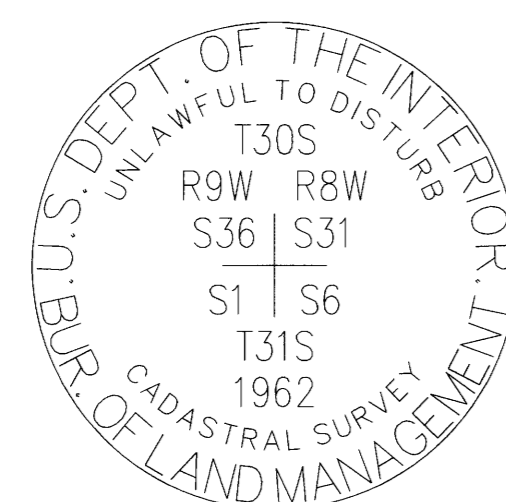
POINT NUMBER: 207



POINT NUMBER: 208



POINT NUMBER: 209



POINT NUMBER: 210

200-FOUND MONUMENT

CORNER E-9, (GCDB 300600) CORNER OF SECTIONS 4, 5, 8 & 9 T. 31 S., R. 08 W., W.M.

JULY 28, 1882 GLO SURVEY BY W.H. BYARS UNDER CONTRACT #456 (DCSO RECORDS VOLUME 19, PAGE 8147) MARKED A CHINQUAPIN, 7" DIA., "T31S R8W S4" ON NE, "S9" ON SE, "S8" ON SW & "S5" ON NW FACE ALSO 5 NOTCHES ON THE SOUTH & 4 NOTCHES ON THE EAST ANGLE OF SAME, FOR THE CORNER TO SECTIONS 4, 5, 8 & 9 FROM WHICH: A LAUREL, 10" DIA., BEARS N 42° E, 27 LKS. MKD: T31S R8W S4 BT A LAUREL, 10" DIA., BEARS S 45° E, 27 LKS. MKD: T31S R8W S9 BT A FIR, 10" DIA., BEARS S 20° W, 11 LKS. MKD: T31S R8W S8 BT A LAUREL, 10" DIA., BEARS N 35° W, 20 LKS. MKD: T31S R8W S5 BT

NOVEMBER 1960 - SEPTEMBER 1962 BLM DEPENDENT RESURVEY BY C. ALBERT WHITE, HAROLD D. CORBIN, CADASTRAL SURVEYORS AND DONALD R. BECK, SURVEY TECHNICIAN UNDER GROUP #350 (DCSO RECORDS VOLUME 32, PAGES 13206-7) POINT FOR THE CORNER OF SECTIONS 4, 5, 8 & 9 AT PROPORTIONATE DISTANCE; THERE IS NO REMAINING EVIDENCE OF THE ORIGINAL CORNER. SET AN IRON POST, 28" LONG, 2-1/2" DIA., 21" IN THE GROUND, WITH BRASS CAP MARKED: T31S R8W S5 S4 S8 S9 1961 FROM WHICH: A S.PINE, 44" DIA., BEARS N 25° E, 60 LKS. MKD: T31S R8W S4 BT A FIR, 15" DIA., BEARS S 46-1/2° E, 53 LKS. MKD: T31S R8W S9 BT A FIR, 25" DIA., BEARS S 49-1/2° W, 46 LKS. MKD: T31S R8W S8 BT A FIR, 20" DIA., BEARS N 4-1/2° W, 29 LKS. MKD: T31S R8W S5 BT

AUGUST 1972 US DEPARTMENT OF INTERIOR BUREAU OF LAND MANAGEMENT SURVEY BY DON E. GARRETT RPLS 544 CONTRACT #53500-CT2-334(N) (MAP FILE M91-13) FOUND BRASS CAP MARKED: US CADASTRAL SURVEY BLM S4 S5 S8 S9 T31S R8W 1961 A 23" FIR BEARS N 4-1/2° W, 29 LKS. WITH SCAR A 46" PINE BEARS N 25° E, 60 LKS. WITH SCRIBING A 15" FIR (NOW STUMP) BEARS S 53-3/4° E, 51 LKS. WITH SCRIBING SW BEARING TREE IS DOWN

APRIL 2015 GERALD NYGREN FOR SENECA JONES TIMBER CO. (MAP FILE M169-26) FOUND 1961 BLM BRASS CAP AND BT'S PER INDEX NO. 300600 A 24" D.FIR BEARS N 4°30' W, 19.1 FT A 44" PINE, NOW STUMP, N 25°30' E, 39.6 FT A 15" D.FIR, NOW STUMP, BEARS S 46°30' E, 33.0 FT NEW: A 10" D.FIR BEARS S 28° E, 12.4 FT SCRIBED: T31S R8W S9 BT A 7" D.FIR BEARS N 34° E, 23.5 FT SCRIBED: T31S R8W S4 BT A 14" D.FIR BEARS S 63° W, 13.3 FT SCRIBED: T31S R8W S8 BT

JUNE 8, 2023 GARRETT FINCH AND CREW WITH MINISTER AND GLAESER SURVEYING FOUND A 3-1/4" BLM BRASS CAP, 0.6 FT ABOVE GROUND FROM WHICH: A 9" FIR BEARS N 34° E, 23.5 FT WITH HEALED BLAZE AND BT SIGN (2015) A 26" FIR BEARS N 04° W, 20.1 FT WITH HEALED BLAZE AND BT SIGN (1960) A 16" FIR BEARS S 63° W, 13.3 FT WITH HEALED BLAZE AND BT SIGN (2015) A 12" FIR BEARS S 28° E, 12.4 FT WITH HEALED BLAZE AND BT SIGN (2015) A 33" STUMP (6 FT HIGH) BEARS N 25-1/2° E, 39.6 FT (1960) A 33" STUMP, DECAYED, BEARS S 46-1/2° E, 33.0 FT (1960) (SET CHAINING NAIL AT SIDE CENTER, BT SIGNS ON FRONT AND REAR, AND PAINTED RED BAND FOR EXISTING BT'S)

201-FOUND MONUMENT

CORNER C-9, (GCDB 300640) 1/4 CORNER OF SECTIONS 4 & 5 T. 31 S., R. 08 W., W.M.

JULY 28, 1882 GLO SURVEY BY W.H. BYARS UNDER CONTRACT #456 (DCSO RECORDS VOLUME 19, PAGE 8149) SET A FIR POST 3 FT LONG, 3" SQUARE, 18" IN THE GROUND, MARKED 1/4 S ON WEST SIDE, FOR THE 1/4 SECTION CORNER FROM WHICH: A CEDAR, 24" DIA., BEARS S 65° E, 9 LKS. MKD: 1/4 S BT A W.FIR, 30" DIA., BEARS S 48° W, 6 LKS. MKD: 1/4 S BT

NOVEMBER 1960 - SEPTEMBER 1962 BLM DEPENDENT SURVEY BY C. ALBERT WHITE, HAROLD D. CORBIN, CADASTRAL SURVEYORS AND DONALD R. BECK, SURVEY TECHNICIAN UNDER GROUP # 350 (DCSO RECORDS VOLUME 32, PAGES 13208-9) POINT FOR THE 1/4 SECTION CORNER OF SECTIONS 4 & 5, AT PROPORTIONATE DISTANCE; THERE IS NO REMAINING EVIDENCE OF THE ORIGINAL CORNER SET AN IRON POST 28" LONG, 2-1/2" DIA., 23" IN THE GROUND WITH BRASS CAP MARKED: 1/4 S5 S4 T31S R8W 1961 FROM WHICH: A FIR, 23" DIA., BEARS N 35° E, 41 LKS. MKD: 1/4 S4 BT A W.FIR, 15" DIA., BEARS S 77° W, 42 LKS. MKD: 1/4 S5 BT

APRIL 2015 GERALD NYGREN FOR SENECA JONES TIMBER CO. (MAP FILE M169-26) FOUND: 1961 BLM BRASS CAP AND BT'S PER INDEX NO. 300640 A 23" W.FIR, NOW STUMP, BEARS N 35° E, 27.06 FT NEW: AN 11" W.FIR BEARS N 84° W, 22.6 FT SCRIBED: 1/4 S5 BT A 13" D.FIR BEARS N 15° E, 21.4 FT SCRIBED: 1/4 S4 BT

JUNE 6, 2023 GARRETT FINCH AND CREW WITH MINISTER AND GLAESER SURVEYING FOUND A 3-1/4" BLM BRASS CAP, 0.5 FT ABOVE GROUND FROM WHICH: A 21" STUMP (4 FT HIGH), DECAYED, BEARS N 35° E, 27.1 FT WITH BT SIGN (1960) A ROTHOLE BEARS N 84° W, 22.6 FT WITH 12" TRUNK ALONGSIDE WITH VISIBLE SCRIBE "1/4 S5 BT" (2015) A 14" FIR BEARS N 15° E, 21.4 FT WITH HEALED BLAZE AND BT SIGN (2015) (SET CHAINING NAIL AT SIDE CENTER, BT SIGNS ON FRONT AND REAR, AND PAINTED RED BAND FOR EXISTING BT'S)

ESTABLISHED THE FOLLOWING: A 6" FIR BEARS S 40° W, 29.8 FT MKD: 1/4 S5 BT (SET CHAINING NAIL AT SIDE CENTER, NAIL AND WASHER STAMPED "PLS 2830" AT BASE OF BLAZE, BT SIGNS ON FRONT AND BACK AND PAINTED RED BAND FOR NEW BT)

202-FOUND MONUMENT

CORNER A-9, (GCDB 300700) CORNER OF SECTIONS 4 & 5 T. 31 S., R. 08 W., W.M. AND 32 & 33 T. 30 S., R. 08 W., W.M.

JULY 28, 1882 GLO SURVEY BY W.H. BYARS, DEPUTY SURVEYOR UNDER CONTRACT #456 (DCSO RECORDS VOLUME 17, PAGE 7309) MARKED A LAUREL 14" DIA., FOR THE CORNER TO SECTIONS 4, 5, 32 AND 33 MKD: "T30S R8W S33" ON THE NE FACE, "T31S S4" ON THE SE FACE; "S5" ON THE SW FACE AND "S32" ON THE NW FACE. ALSO 4 NOTCHES ON THE EAST AND 2 NOTCHES ON THE WEST SIDE FROM WHICH: A LAUREL 12" DIA., BEARS N 50° E, 49 LKS. DIST. MKD: T30S R8W S33 BT A LAUREL 16" DIA., BEARS S 70° E, 34 LKS. DIST. MKD: T31S R8W S4 BT A SUGAR PINE 10" DIA., BEARS S 41° W, 9 LKS. DIST. MKD: T31S R8W S5 BT A LAUREL 5" DIA., BEARS N 18° W, 27 LKS. DIST. MKD: T30S R8W S32 BT

NOVEMBER 1960 - SEPTEMBER 1962 BLM DEPENDENT RESURVEY BY C. ALBERT WHITE, HAROLD D. CORBIN, CADASTRAL SURVEYORS AND DONALD R. BECK, SURVEY TECHNICIAN UNDER GROUP #446 (DCSO RECORDS VOLUME 31, PAGE 13192) THE SECTION CORNER MONUMENTED BY THE ROTTED SHELL OF THE ORIGINAL MADRONE CORNER TREE, 18" DIA., WITH OLD AXE MARKS AND BLAZES VISIBLE, FROM WHICH THE ORIGINAL BEARING TREES: A MADRONE 15" DIA., BEARS N 56° E, 49 LKS. DIST. WITH HEALED BLAZE (REC. BRG. N 50° E) A MADRONE 25" DIA., BEARS S 70° E, 34 LKS. DIST. WITH OPENED AND ROTTED BLAZE A SUGAR PINE 12" DIA., BEARS S 41° W, 9 LKS. DIST. WITH SCRIBE MARKS "T31S R8W" VISIBLE ON PARTIALLY OPENED BLAZE A DOWN MADRONE 8" DIA., BEARS N 18° W, 27 LKS. DIST. WITH ROTTED BLAZE AT CORNER POINT: SET AN IRON POST, 28" LONG, 2-1/2" DIA., 21" IN THE GROUND, WITH BRASS CAP MARKED: T30S R8W S32 S33 S4 S5 T31S 1961 FROM WHICH NEW BEARING TREES: A FIR 10" DIA., BEARS N 13° E, 60 LKS. DIST. MKD: T30S R8W S33 BT A CEDAR 12" DIA., BEARS S 37-1/2° E, 73 LKS. DIST. MKD: T31S R8W S4 BT A CEDAR 8" DIA., BEARS S 77° W, 56 LKS. DIST. MKD: T31S R8W S5 BT A SUGAR PINE 60" DIA., BEARS N 42° W, 40 LKS. DIST. MKD: T30S R8W S32 BT

MARCH 1974 R.E. STUNTZNER FOR RESERVATION RANCH (MAP FILE M53-9) FOUND IRON PIPE WITH 1961 BRASS CAP

APRIL 2015 GERALD NYGREN FOR SENECA JONES TIMBER CO. (MAP FILE M169-26) FOUND 1961 BLM BRASS CAP AND BT'S PER INDEX NO. 300700 1882: 10" S.PINE, NOW SNAG, BEARS N 41° W, 8.2 FT, VISIBLE SCRIBE 1961: 18" CEDAR BEARS S 37°30' E, 48.2 FT, VISIBLE SCRIBE 12" CEDAR BEARS S 77° W, 37.0 FT 60" S.PINE, NOW STUMP, BEARS N 42° W, 26.4 FT, VISIBLE SCRIBE NEW: 16" CEDAR BEARS N 27° E, 24.1 FT, SCRIBED: "T30S R8W S33 BT" 9" D.FIR BEARS N 45° W, 60.2 FT, SCRIBED: "T30S R8W S32 BT"

MAY 2020 - FEBRUARY 2021 BLM DEPENDENT RESURVEY BY JEFFREY O. COVINGTON, CADASTRAL SURVEYOR UNDER GROUP #2972 (DCSO RECORDS VOLUME 59, PAGE 23949) THE CORNER OF SECTIONS 4, 5, 32 AND 33, REPORTED BY WHITE AND CORBIN IN 1960-1962; PERPETUATED BY NYGREN, IN 2015; MONUMENTED WITH AN IRON POST, 2-1/2" DIA., FIRMLY SET, PROJECTING 12" ABOVE GROUND, IN MOUND OF STONE, 2 FT BASE, 8" HIGH, WITH A BRASS CAP (PROPERLY) MARKED FROM WHICH THE REMAINS OF THE BT'S REPORTED BY WHITE AND CORBIN: A CEDAR, 18" DIA., BEARS S 37-1/2° E, 48.2 FT WITH HEALED BLAZE A SUGAR PINE SNAG, 10" DIA., BEARS S 34° W, 8.5 FT WITH SCRIBE MARKS "T31S R8W S5 B" VISIBLE ON OPEN BLAZE (ORIGINAL RECORD, S 41° W, 5.9 FT) A CEDAR, 12" DIA., BEARS S 77° W, 37.0 FT WITH HEALED BLAZE A DECAYED SUGAR PINE STUMP, 60" DIA., BEARS N 42° W, 26.4 FT, WITH SCRIBE MARKS "T30S R8W S32 BT" VISIBLE ON OPEN BLAZE AND THE BEARING TREES MARKED BY NYGREN: A CEDAR, 17" DIA., BEARS N 24-3/4° E, 28.8 FT, WITH SCRIBE MARKS "T30S R8W S33 BT" VISIBLE ON PARTIALLY HEALED BLAZE A FIR, 11" DIA., BEARS N 46-1/4° W, 59.9 FT, WITH SCRIBE MARKS "T30S R8W S32 BT" VISIBLE ON PARTIALLY HEALED BLAZE

JUNE 6, 2023 GARRETT FINCH AND CREW WITH MINISTER AND GLAESER SURVEYING FOUND A 3-1/4" BLM BRASS CAP IN MOUND OF STONE, 1.3 FT ABOVE GROUND FROM WHICH: A 10" SNAG BEARS S 34° W, 8.5 FT WITH BT SIGN AND SCRIBING "T31S R8W S5 B" (1882) A 13" CEDAR BEARS S 77° W, 37.2 FT WITH HEALED BLAZE, BT SIGN AND SIDE NAIL (1961) AN 11" FIR BEARS N 46-1/4° W, 59.9 FT WITH HEALED BLAZE, BT SIGN AND SIDE NAIL (2015) A 52" STUMP (5 FT HIGH) BEARS N 42° W, 26.4 FT WITH BT SIGN AND SCRIBING "T30S R8W S32 BT" (1961) A 17" CEDAR BEARS N 24-3/4° E, 23.8 FT WITH BT SIGN AND SCRIBING "T30S R8W S33 BT" (2015) A 17" CEDAR BEARS S 37-1/2° E, 48.2 FT WITH HEALED BLAZE AND BT SIGN (1961) A 17" MADRONE BEARS N 50° E, 29.7 FT WITH HEALED BLAZE AND BT SIGN (1882) A 17" MADRONE BEARS S 70° E, 22.4 FT WITH ROTTED BLAZE AND BT SIGN (1882) A 14" STUMP (2 FT HIGH), DECAYED, BEARS N 13° E, 40.2 FT (1961) (SET CHAINING NAIL AT SIDE CENTER, BT SIGNS ON FRONT AND REAR, AND PAINTED RED BAND FOR EXISTING BT'S, SET NAIL AT TOP CENTER FOR STUMPS)

RECORD OF SURVEY

LOCATED IN A PORTION OF GOV'T LOTS 1, 2, 3, 4 AND THE NW 1/4, NE 1/4, SE 1/4, SW 1/4 OF SECTION 5 AND THE NE 1/4 OF SECTION 7 T. 31 S., R. 8 W., W.M., AND IN A PORTION OF THE NE 1/4 OF SECTION 1, T. 31 S., R. 9 W., W.M. SNAKE EYES 2-TASK H DOUGLAS COUNTY, OREGON CONTRACT NO. 1204T020D0010 TASK ORDER NO. 140L4322F0063

FILED DATE: 12-5-2023 BY: [Signature] THIS SURVEY CONSISTS OF: MAP: M178-75A-E NARRATIVE: CORNER RPT: DOUGLAS COUNTY SURVEYOR

REGISTERED PROFESSIONAL LAND SURVEYOR DANIEL A. RENTON OREGON JUNE 30, 1997 2830 Expires 12-31-2024

Scale: N/A Job No. 22-319 Date: 11/29/2023 Calc By: DAR Drawn By: RDH Checked By: DAR Sheet 3 of 5