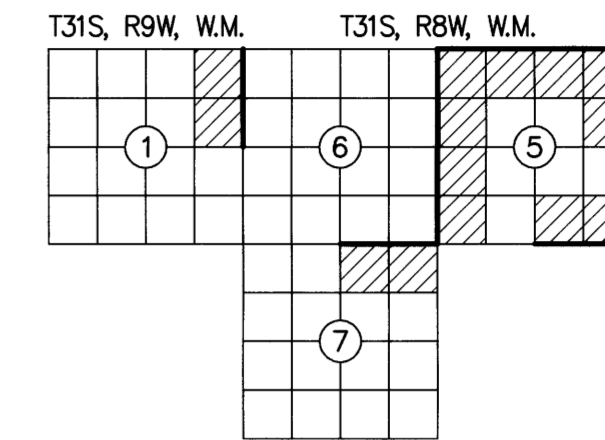


RECORD OF SURVEY

FILED
DATE: 12-5-2023 BY: [Signature]
THIS SURVEY CONSISTS OF:
MAP: M178-75 A-E
NARRATIVE:
CORNER RPT:
DOUGLAS COUNTY SURVEYOR

LOCATED IN A PORTION OF
GOV'T LOTS 1, 2, 3, 4 AND
THE NW 1/4, NE 1/4, SE 1/4, SW 1/4
OF SECTION 5 AND THE NE 1/4 OF SECTION 7
T. 31 S., R. 8 W., W.M., AND IN A PORTION OF
THE NE 1/4 OF SECTION 1, T. 31 S., R. 9 W., W.M.
SNAKE EYES 2-TASK H
DOUGLAS COUNTY, OREGON
CONTRACT NO. 1204T020D0010
TASK ORDER NO. 140L4322F0063



SURVEY FOR: UNITED STATES DEPARTMENT OF THE INTERIOR BUREAU OF LAND MANAGEMENT
ROSEBURG DISTRICT OFFICE
777 NW GARDEN VALLEY BLVD
ROSEBURG, OR 97471

NARRATIVE:

THE PURPOSE OF THIS SURVEY WAS TO FULFILL THE CONTRACT (1204T020D0010/140L4322F0063) REQUIREMENTS FOR THE SNAKE EYES 2 - TASK H CADASTRAL SURVEY AS LISTED BELOW:

- SECTION 5, T. 31 S., R. 8 W., W.M.
- SECTION 7, T. 31 S., R. 8 W., W.M.
- SECTION 1, T. 31 S., R. 9 W., W.M.

LOCATION OF PROJECT:

THIS PROJECT IS LOCATED APPROXIMATELY 28 MILES SOUTHWEST OF ROSEBURG, 6 MILES SOUTHEAST OF HIGHWAY 42 AND TWELVE MILE CREEK RD, DOUGLAS COUNTY, OREGON.

GENERAL NOTES:

THIS CONTRACT IS FOR BOUNDARY LINE MARKING/POSTING AND BOUNDARY LINE MAINTENANCE. WE COMPLETED THE MAINTENANCE OF 11 CORNERS, AND SURVEYED AND POSTED 3.75 MILES OF BOUNDARY.
ALL BOUNDARY WORK COMPLIED WITH THE SURVEY SPECIFICATIONS AND PROCEDURES OUTLINED IN THE BUREAU OF LAND MANAGEMENT MANUAL OF SURVEYING INSTRUCTIONS (2009). ALL CORNERS WERE MAINTAINED TO THE SPECIFICATIONS CONTAINED IN SECTION C OF THE R6 2020 CADASTRAL SURVEY IDIQ STANDARDS. SURVEY AND LAND RECORDS RESEARCH WAS PERFORMED TO VERIFY THE CHAIN OF SURVEY AT EACH CORNER PRIOR TO MAINTAINING THE CORNERS AND MARKING AND POSTING THE BOUNDARIES. BOUNDARY DELINEATOR POSTS AND SIGNS (SEE EXAMPLE SIGNS BELOW) WERE SET ALONG THE BOUNDARY WHERE GAPS IN THE EXISTING POSTING ARE FOUND AND THE BOUNDARY LINE BLAZING WAS ADDED OR REFRESHED. SIGNS OF ENCROACHMENT AND/OR TRESPASS WERE NOT FOUND.

THE EXISTING MONUMENTS SHOWN HEREIN WERE FOUND AT ACCEPTABLE POSITIONS, WERE MONUMENTED PROPERLY AND STANDARD CORNER MAINTENANCE WAS PERFORMED.

ALL CORNER SEARCH AND EVALUATION WAS PERFORMED BY DANIEL RENTON, PLS 2830. THE PROJECT AREA IS ACCESSED BY COUNTY ROADS, PRIVATE ROADS AND OTHER FOREST ROADS.

ALL NECESSARY SIGNS AND POSTS WERE PROVIDED BY THE BUREAU OF LAND MANAGEMENT.

THE BEARINGS SHOWN HEREIN FOR BEARING TREES WERE MEASURED USING A BRUNTON GEO TRANSIT COMPASS (MAGNETIC DECLINATION=15' EAST)

THE DISTANCES AND DIAMETERS SHOWN HEREIN FOR BEARING TREES WERE MEASURED USING A STEEL LOGGERS TAPE.

TASK AND CORNERS MAINTAINED:

- SECTION 5, T. 31 S., R. 8 W., W.M.
- TIE POSITIONS, VERIFY AND MAINTAIN THE FOLLOWING CORNERS:
MONUMENT 200, CORNER E-9, (GCDB 300600) CORNER OF SECTIONS 4, 5, 8 & 9
MONUMENT 201, CORNER C-9, (GCDB 300640) 1/4 CORNER OF SECTIONS 4 & 5
MONUMENT 202, CORNER A-9, (GCDB 300700) CORNER OF SECTIONS 4, 5, 32 & 33
MONUMENT 203, CORNER E-7, (GCDB 240600) 1/4 CORNER OF SECTIONS 5 & 8
MONUMENT 204, CORNER A-7, (GCDB 240700) 1/4 CORNER OF SECTIONS 5 & 32
MONUMENT 205, CORNER A-5, (GCDB 200100) CORNER OF SECTIONS 5, 6, 31 & 32
MONUMENT 206, CORNER C-5, (GCDB 200640) 1/4 CORNER OF SECTIONS 5 & 6
MONUMENT 207, CORNER E-5, (GCDB 200600) CORNER OF SECTIONS 5, 6, 7 & 8
- SURVEY LINE, MARK AND POST BOUNDARY SHOWN HEREIN

- SECTION 7, T. 31 S., R. 8 W., W.M.
- TIE POSITIONS, VERIFY AND MAINTAIN THE FOLLOWING CORNERS:
MONUMENT 208, CORNER E-3, (GCDB 140600) 1/4 CORNER OF SECTIONS 6 & 7
- SURVEY LINE, MARK AND POST BOUNDARY SHOWN HEREIN

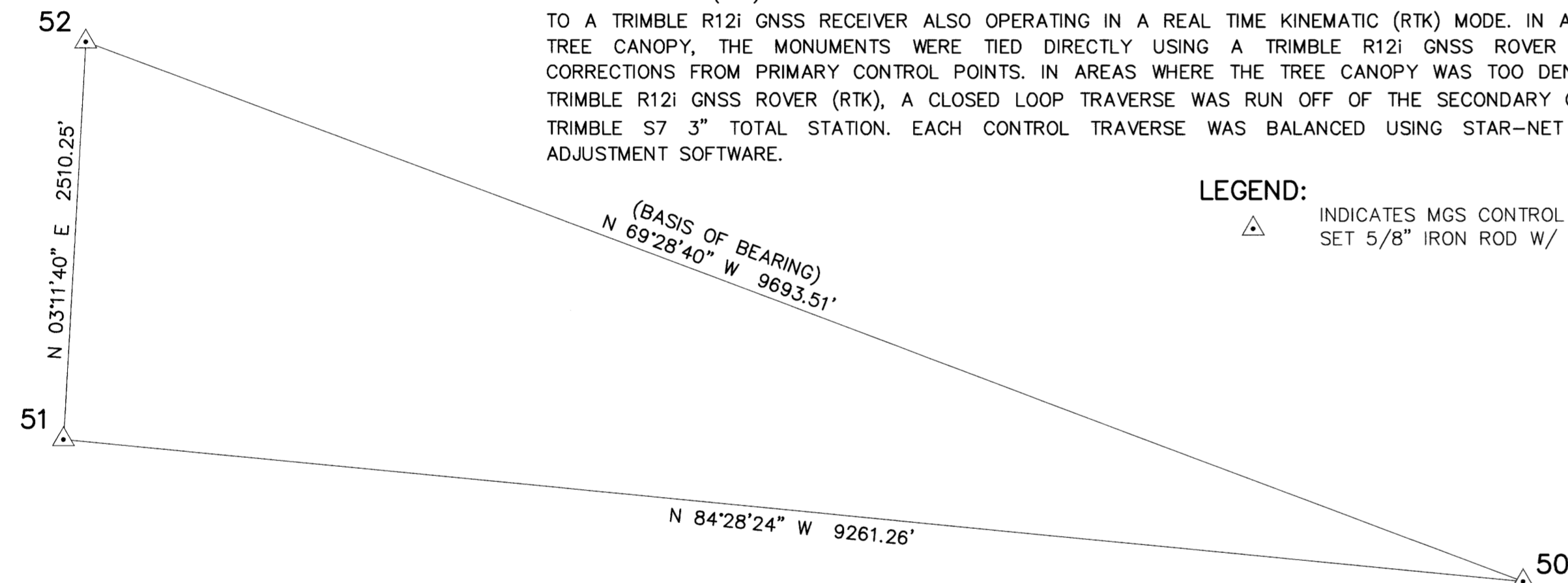
- SECTION 1, T. 31 S., R. 9 W., W.M.
- TIE POSITIONS, VERIFY AND MAINTAIN THE FOLLOWING CORNERS:
MONUMENT 209, CORNER C-1, (GCDB 100640) 1/4 CORNER OF SECTIONS 1 & 6
MONUMENT 210, CORNER A-25, (GCDB 700700) CORNER OF SECTIONS 1, 6, 36 & 31
- SURVEY LINE, MARK AND POST BOUNDARY SHOWN HEREIN

CONTROL PROCEDURE:

A TRIMBLE R12 GNSS BASE RECEIVER WAS USED TO COLLECT OVER 8 HOURS OF STATIC DATA ON THE PRIMARY CONTROL POINTS 50, 51 & 52. THE STATIC DATA WAS THEN POST PROCESSED USING THE NATIONAL GEODETIC SURVEY ONLINE POSITIONING USER SERVICE (OPUS).

THE SECONDARY CONTROL WAS ESTABLISHED BY USING A TRIMBLE R12 GNSS BASE RECEIVER OPERATING IN A REAL TIME KINEMATIC (RTK) MODE AND SET ON THE PRIMARY OPUS CONTROL WHILE TRANSMITTING REAL TIME CORRECTIONS TO A TRIMBLE R12I GNSS RECEIVER ALSO OPERATING IN A REAL TIME KINEMATIC (RTK) MODE. IN AREAS OF MINIMAL TREE CANOPY, THE MONUMENTS WERE TIED DIRECTLY USING A TRIMBLE R12I GNSS ROVER WHILE RECEIVING CORRECTIONS FROM PRIMARY CONTROL POINTS. IN AREAS WHERE THE TREE CANOPY WAS TOO DENSE FOR USING A TRIMBLE R12I GNSS ROVER (RTK), A CLOSED LOOP TRAVERSE WAS RUN OFF OF THE SECONDARY CONTROL USING A TRIMBLE S7 3" TOTAL STATION. EACH CONTROL TRAVERSE WAS BALANCED USING STAR-NET LEAST SQUARES ADJUSTMENT SOFTWARE.

LEGEND:
△ INDICATES MGS CONTROL POINT
SET 5/8" IRON ROD W/ 2" ALUMINUM CAP



POINT NO.	NORTHING	EASTING	ELEV	DESCRIPTION
50	24467.85	74297.64	2584.57	5/8" IRON ROD W/ 2" ALUM. CAP "SNAKE-1 2023"
51	25359.78	65079.43	2640.69	5/8" IRON ROD W/ 2" ALUM. CAP "SNAKE-2 2023"
52	27866.13	65219.32	2265.00	5/8" IRON ROD W/ 2" ALUM. CAP "SNAKE-3 2023"

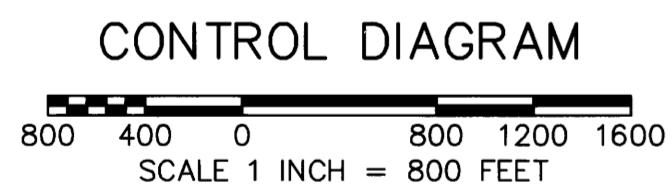
SHEET INDEX

- SHEET 1 VICINITY MAP, EQUIPMENT LIST, CONTROL DIAGRAM AND TABLE, CONTROL PROCEDURE, CERTIFICATES, POSTED SIGNS AND NARRATIVE
SHEET 2 SITE DETAILS, FOUND MONUMENT COORDINATE TABLE, REFERENCES AND LEGEND
SHEET 3 MONUMENT DETAILS AND CORNER HISTORY
SHEET 4-5 CORNER HISTORY

EQUIPMENT LIST:

- 2018 GMC SIERRA 2500HD SURVEY TRUCK
- TRIMBLE R12 GNSS BASE RECEIVER
- TRIMBLE R12I GNSS ROVER RECEIVER
- TRIMBLE S7 3" TOTAL STATION
- BRUNTON GEO TRANSIT COMPASS FOR BT'S (MAGNETIC DECLINATION=15' EAST)
- TRIMBLE TDL 450HX 35-WATT RADIO
- TRIMBLE TSC5 DATA COLLECTOR WITH TRIMBLE ACCESS SOFTWARE
- AUTODESK CIVIL 3D 2023
- TRIMBLE BUSINESS CENTER
- STAR-NET LEAST SQUARES ADJUSTMENT SOFTWARE

BASIS OF BEARING: N 69°28'40" W ALONG THE CONTROL LINE BETWEEN (MGS CONTROL POINT 50) AND (MGS CONTROL POINT 52) OREGON COORDINATE REFERENCE SYSTEM (OCRS), COTTAGE GROVE-CANYONVILLE ZONE, INTERNATIONAL FEET.



UNITED STATES DEPARTMENT OF THE INTERIOR BUREAU OF LAND MANAGEMENT

BOUNDARY

NO TIMBER MAY BE CUT OR REMOVED WITHOUT AUTHORIZATION

T. R. SEC. LINE IS APPROX. FT.
CORNER IS APPROX. FT.

POSTED BY DATE

BLM OFFICE IS LOCATED AT

UNITED STATES DEPARTMENT OF THE INTERIOR BUREAU OF LAND MANAGEMENT

BEARING TREE

IT IS UNLAWFUL TO DESTROY, DEFACE, CHANGE OR REMOVE ANY CORNER OF THE PUBLIC LAND SURVEYS OR TO CUT DOWN OR DEFACE ANY BEARING TREE PERTAINING TO SUCH SURVEYS.

CORNER IS APPROXIMATELY DISTANCE DIRECTION

T. R. SEC. POSTED BY DATE

LAND SURVEY MONUMENT

PLEASE DO NOT DISTURB

THIS MONUMENT WAS LOCATED AS PART OF AN OFFICIAL LAND SURVEY. IT HELPS DEFINE LAND OWNERSHIP LINES.

FOR FURTHER INFORMATION CONTACT THE BUREAU OF LAND MANAGEMENT

11/29/2023

REGISTERED PROFESSIONAL LAND SURVEYOR

Daniel A. Renton

OREGON
JUNE 30, 1997
DANIEL A. RENTON
2830

Expires 12-31-2024

MINISTER AND GLAESER SURVEYING, INC. MAKES NO WARRANTIES AS TO MATTERS OF UNWRITTEN TITLE SUCH AS ADVERSE POSSESSION, ACQUIESCENCE, ESTOPPEL, ETC.

MINISTER-GLAESER SURVEYING INC.
2200 E. EVERGREEN BLVD.
VANCOUVER, WA 98661
(360) 694-3313

SCALE: 1"=800'
JOB NO. 22-319
DATE: 11/29/2023
CALC BY: DAR
DRAWN BY: RDH
CHECKED BY: DAR
SHEET 1 OF 5