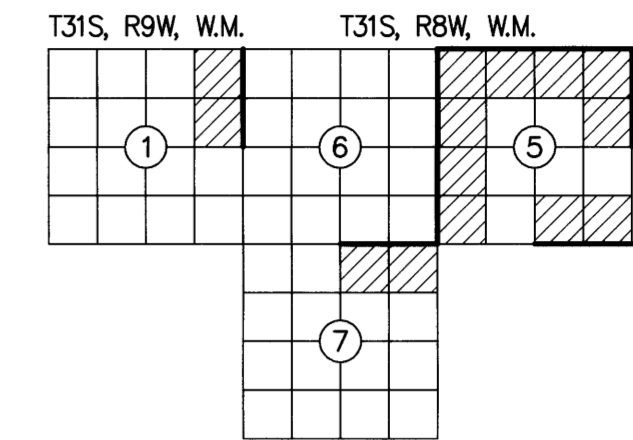


RECORD OF SURVEY

FILED
DATE: 12-5-2023 BY: [Signature]
THIS SURVEY CONSISTS OF:
MAP: M178-75 A-E
NARRATIVE:
CORNER RPT:
DOUGLAS COUNTY SURVEYOR

LOCATED IN A PORTION OF
GOV'T LOTS 1, 2, 3, 4 AND
THE NW 1/4, NE 1/4, SE 1/4, SW 1/4
OF SECTION 5 AND THE NE 1/4 OF SECTION 7
T. 31 S., R. 8 W., W.M., AND IN A PORTION OF
THE NE 1/4 OF SECTION 1, T. 31 S., R. 9 W., W.M.
SNAKE EYES 2-TASK H
DOUGLAS COUNTY, OREGON
CONTRACT NO. 1204T020D0010
TASK ORDER NO. 140L4322F0063



SURVEY FOR: UNITED STATES DEPARTMENT OF THE INTERIOR BUREAU OF LAND MANAGEMENT
ROSEBURG DISTRICT OFFICE
777 NW GARDEN VALLEY BLVD
ROSEBURG, OR 97471

NARRATIVE:

THE PURPOSE OF THIS SURVEY WAS TO FULFILL THE CONTRACT (1204T020D0010/140L4322F0063) REQUIREMENTS FOR THE SNAKE EYES 2 - TASK H CADASTRAL SURVEY AS LISTED BELOW:

- SECTION 5, T. 31 S., R. 8 W., W.M.
- SECTION 7, T. 31 S., R. 8 W., W.M.
- SECTION 1, T. 31 S., R. 9 W., W.M.

LOCATION OF PROJECT:

THIS PROJECT IS LOCATED APPROXIMATELY 28 MILES SOUTHWEST OF ROSEBURG, 6 MILES SOUTHEAST OF HIGHWAY 42 AND TWELVE MILE CREEK RD, DOUGLAS COUNTY, OREGON.

GENERAL NOTES:

THIS CONTRACT IS FOR BOUNDARY LINE MARKING/POSTING AND BOUNDARY LINE MAINTENANCE. WE COMPLETED THE MAINTENANCE OF 11 CORNERS, AND SURVEYED AND POSTED 3.75 MILES OF BOUNDARY.
ALL BOUNDARY WORK COMPLIED WITH THE SURVEY SPECIFICATIONS AND PROCEDURES OUTLINED IN THE BUREAU OF LAND MANAGEMENT MANUAL OF SURVEYING INSTRUCTIONS (2009). ALL CORNERS WERE MAINTAINED TO THE SPECIFICATIONS CONTAINED IN SECTION C OF THE R6 2020 CADASTRAL SURVEY IDIQ STANDARDS. SURVEY AND LAND RECORDS RESEARCH WAS PERFORMED TO VERIFY THE CHAIN OF SURVEY AT EACH CORNER PRIOR TO MAINTAINING THE CORNERS AND MARKING AND POSTING THE BOUNDARIES. BOUNDARY DELINEATOR POSTS AND SIGNS (SEE EXAMPLE SIGNS BELOW) WERE SET ALONG THE BOUNDARY WHERE GAPS IN THE EXISTING POSTING ARE FOUND AND THE BOUNDARY LINE BLAZING WAS ADDED OR REFRESHED. SIGNS OF ENCROACHMENT AND/OR TRESPASS WERE NOT FOUND.

THE EXISTING MONUMENTS SHOWN HEREIN WERE FOUND AT ACCEPTABLE POSITIONS, WERE MONUMENTED PROPERLY AND STANDARD CORNER MAINTENANCE WAS PERFORMED.

ALL CORNER SEARCH AND EVALUATION WAS PERFORMED BY DANIEL RENTON, PLS 2830. THE PROJECT AREA IS ACCESSED BY COUNTY ROADS, PRIVATE ROADS AND OTHER FOREST ROADS.

ALL NECESSARY SIGNS AND POSTS WERE PROVIDED BY THE BUREAU OF LAND MANAGEMENT.

THE BEARINGS SHOWN HEREIN FOR BEARING TREES WERE MEASURED USING A BRUNTON GEO TRANSIT COMPASS (MAGNETIC DECLINATION=15° EAST)

THE DISTANCES AND DIAMETERS SHOWN HEREIN FOR BEARING TREES WERE MEASURED USING A STEEL LOGGERS TAPE.

TASK AND CORNERS MAINTAINED:

- SECTION 5, T. 31 S., R. 8 W., W.M.
- TIE POSITIONS, VERIFY AND MAINTAIN THE FOLLOWING CORNERS:
MONUMENT 200, CORNER E-9, (GCDB 300600) CORNER OF SECTIONS 4, 5, 8 & 9
MONUMENT 201, CORNER C-9, (GCDB 300640) 1/4 CORNER OF SECTIONS 4 & 5
MONUMENT 202, CORNER A-9, (GCDB 300700) CORNER OF SECTIONS 4, 5, 32 & 33
MONUMENT 203, CORNER E-7, (GCDB 240600) 1/4 CORNER OF SECTIONS 5 & 8
MONUMENT 204, CORNER A-7, (GCDB 240700) 1/4 CORNER OF SECTIONS 5 & 32
MONUMENT 205, CORNER A-5, (GCDB 200100) CORNER OF SECTIONS 5, 6, 31 & 32
MONUMENT 206, CORNER C-5, (GCDB 200640) 1/4 CORNER OF SECTIONS 5 & 6
MONUMENT 207, CORNER E-5, (GCDB 200600) CORNER OF SECTIONS 5, 6, 7 & 8
- SURVEY LINE, MARK AND POST BOUNDARY SHOWN HEREIN

- SECTION 7, T. 31 S., R. 8 W., W.M.
- TIE POSITIONS, VERIFY AND MAINTAIN THE FOLLOWING CORNERS:
MONUMENT 208, CORNER E-3, (GCDB 140600) 1/4 CORNER OF SECTIONS 6 & 7
- SURVEY LINE, MARK AND POST BOUNDARY SHOWN HEREIN

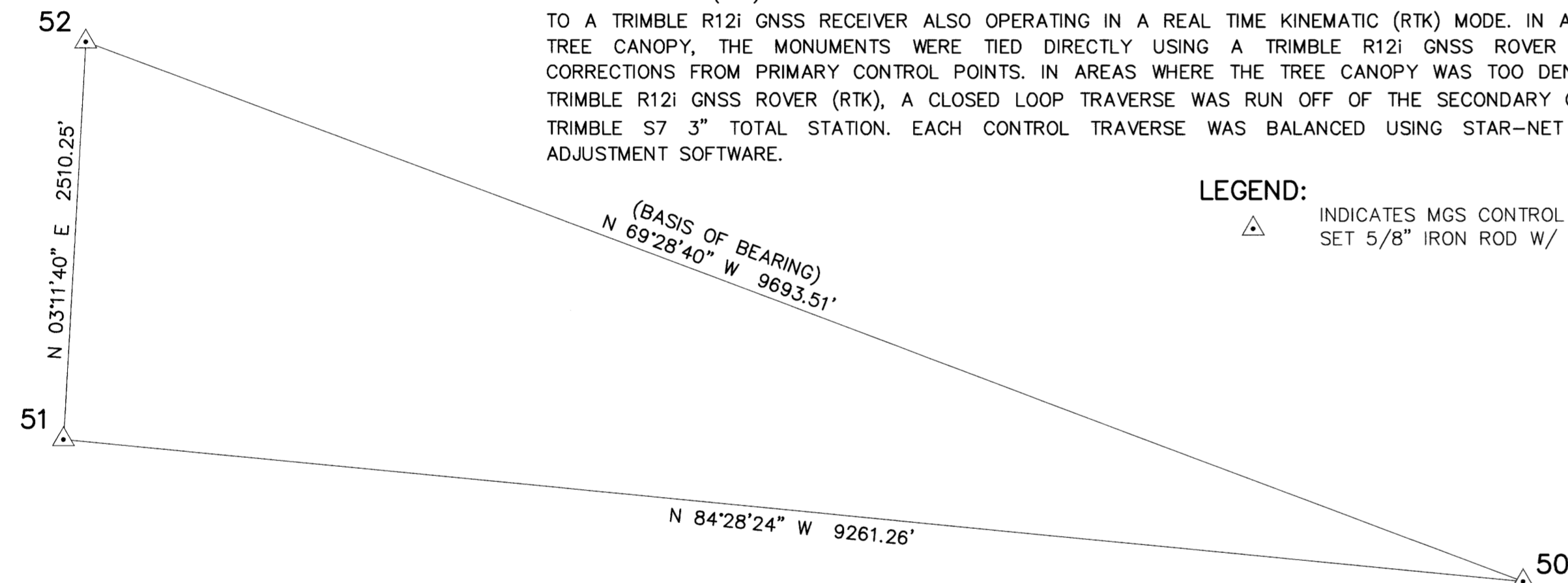
- SECTION 1, T. 31 S., R. 9 W., W.M.
- TIE POSITIONS, VERIFY AND MAINTAIN THE FOLLOWING CORNERS:
MONUMENT 209, CORNER C-1, (GCDB 100640) 1/4 CORNER OF SECTIONS 1 & 6
MONUMENT 210, CORNER A-25, (GCDB 700700) CORNER OF SECTIONS 1, 6, 36 & 31
- SURVEY LINE, MARK AND POST BOUNDARY SHOWN HEREIN

CONTROL PROCEDURE:

A TRIMBLE R12 GNSS BASE RECEIVER WAS USED TO COLLECT OVER 8 HOURS OF STATIC DATA ON THE PRIMARY CONTROL POINTS 50, 51 & 52. THE STATIC DATA WAS THEN POST PROCESSED USING THE NATIONAL GEODETIC SURVEY ONLINE POSITIONING USER SERVICE (OPUS).

THE SECONDARY CONTROL WAS ESTABLISHED BY USING A TRIMBLE R12 GNSS BASE RECEIVER OPERATING IN A REAL TIME KINEMATIC (RTK) MODE AND SET ON THE PRIMARY OPUS CONTROL WHILE TRANSMITTING REAL TIME CORRECTIONS TO A TRIMBLE R12I GNSS RECEIVER ALSO OPERATING IN A REAL TIME KINEMATIC (RTK) MODE. IN AREAS OF MINIMAL TREE CANOPY, THE MONUMENTS WERE TIED DIRECTLY USING A TRIMBLE R12I GNSS ROVER WHILE RECEIVING CORRECTIONS FROM PRIMARY CONTROL POINTS. IN AREAS WHERE THE TREE CANOPY WAS TOO DENSE FOR USING A TRIMBLE R12I GNSS ROVER (RTK), A CLOSED LOOP TRAVERSE WAS RUN OFF OF THE SECONDARY CONTROL USING A TRIMBLE S7 3" TOTAL STATION. EACH CONTROL TRAVERSE WAS BALANCED USING STAR-NET LEAST SQUARES ADJUSTMENT SOFTWARE.

LEGEND:
△ INDICATES MGS CONTROL POINT
SET 5/8" IRON ROD W/ 2" ALUMINUM CAP



POINT NO.	NORTHING	EASTING	ELEV	DESCRIPTION
50	24467.85	74297.64	2584.57	5/8" IRON ROD W/ 2" ALUM. CAP "SNAKE-1 2023"
51	25359.78	65079.43	2640.69	5/8" IRON ROD W/ 2" ALUM. CAP "SNAKE-2 2023"
52	27866.13	65219.32	2265.00	5/8" IRON ROD W/ 2" ALUM. CAP "SNAKE-3 2023"

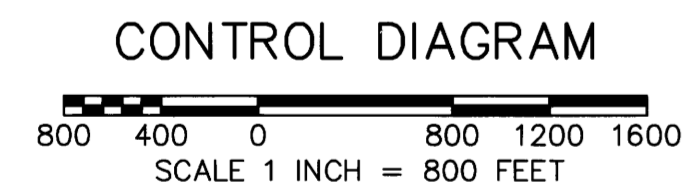
SHEET INDEX

- SHEET 1 VICINITY MAP, EQUIPMENT LIST, CONTROL DIAGRAM AND TABLE, CONTROL PROCEDURE, CERTIFICATES, POSTED SIGNS AND NARRATIVE
SHEET 2 SITE DETAILS, FOUND MONUMENT COORDINATE TABLE, REFERENCES AND LEGEND
SHEET 3 MONUMENT DETAILS AND CORNER HISTORY
SHEET 4-5 CORNER HISTORY

EQUIPMENT LIST:

- 2018 GMC SIERRA 2500HD SURVEY TRUCK
- TRIMBLE R12 GNSS BASE RECEIVER
- TRIMBLE R12I GNSS ROVER RECEIVER
- TRIMBLE S7 3" TOTAL STATION
- BRUNTON GEO TRANSIT COMPASS FOR BT'S (MAGNETIC DECLINATION=15° EAST)
- TRIMBLE TDL 450HX 35-WATT RADIO
- TRIMBLE TSC5 DATA COLLECTOR WITH TRIMBLE ACCESS SOFTWARE
- AUTODESK CIVIL 3D 2023
- TRIMBLE BUSINESS CENTER
- STAR-NET LEAST SQUARES ADJUSTMENT SOFTWARE

BASIS OF BEARING: N 69°28'40" W ALONG THE CONTROL LINE BETWEEN (MGS CONTROL POINT 50) AND (MGS CONTROL POINT 52) OREGON COORDINATE REFERENCE SYSTEM (OCRS), COTTAGE GROVE-CANYONVILLE ZONE, INTERNATIONAL FEET.



UNITED STATES DEPARTMENT OF THE INTERIOR BUREAU OF LAND MANAGEMENT

BOUNDARY

NO TIMBER MAY BE CUT OR REMOVED WITHOUT AUTHORIZATION

T. R. SEC. LINE IS APPROX. FT.
CORNER IS APPROX. FT.

POSTED BY DATE
BLM OFFICE IS LOCATED AT

UNITED STATES DEPARTMENT OF THE INTERIOR BUREAU OF LAND MANAGEMENT

BEARING TREE

IT IS UNLAWFUL TO DESTROY, DEFACE, CHANGE OR REMOVE ANY CORNER OF THE PUBLIC LAND SURVEYS OR TO CUT DOWN OR DEFACE ANY BEARING TREE PERTAINING TO SUCH SURVEYS.

CORNER IS APPROXIMATELY DISTANCE DIRECTION
T. R. SEC. POSTED BY DATE

LAND SURVEY MONUMENT

PLEASE DO NOT DISTURB

THIS MONUMENT WAS LOCATED AS PART OF AN OFFICIAL LAND SURVEY. IT HELPS DEFINE LAND OWNERSHIP LINES.

FOR FURTHER INFORMATION CONTACT THE BUREAU OF LAND MANAGEMENT

11/29/2023
REGISTERED PROFESSIONAL LAND SURVEYOR
[Signature]
OREGON
JUNE 30, 1997
DANIEL A. RENTON
2830
Expires 12-31-2024

MINISTER AND GLAESER SURVEYING, INC. MAKES NO WARRANTIES AS TO MATTERS OF UNWRITTEN TITLE SUCH AS ADVERSE POSSESSION, ACQUIESCENCE, ESTOPPEL, ETC.

SCALE: 1"=800'
JOB NO. 22-319
DATE: 11/29/2023
CALC BY: DAR
DRAWN BY: RDH
CHECKED BY: DAR
SHEET 1 OF 5

MINISTER-GLAESER SURVEYING INC.
2200 E. EVERGREEN BLVD.
VANCOUVER, WA 98661
(360) 694-3313

BLM REFERENCES:

- 1) (1882) GENERAL LAND OFFICE PLAT MAP AND NOTES FOR T. 31 S., R. 8 W., W.M. EXECUTED BY WILLIAM H. BYARS CONTRACT #456 DATE: JULY 28, 1882 PLAT MAP DATED JULY 28, 1883 (1127)
- 2) (1962) BUREAU OF LAND MANAGEMENT RESURVEY AND NOTES FOR T. 31 S., R. 8 W., W.M. EXECUTED BY C. ALBERT WHITE NOVEMBER 1960 - SEPTEMBER 1962 DEPENDENT RESURVEY DATED AUGUST 18, 1964 (5241)

BLM REFERENCES:

- 3) (1973) BUREAU OF LAND MANAGEMENT RESURVEY AND NOTES FOR T. 31 S., R. 8 W., W.M. EXECUTED BY CHARLES E. AKIN JR. AUGUST 1973 - OCTOBER 1973 DEPENDENT RESURVEY DATED OCTOBER 8, 1975 (5543)
- 4) (2021) BUREAU OF LAND MANAGEMENT RESURVEY AND NOTES FOR T. 30 S., R. 8 W., W.M. EXECUTED BY JEFFREY O. COVINGTON MAY 2020 - FEBRUARY 2021 DEPENDENT RESURVEY DATED OCTOBER 19, 2021 (8189)

SURVEY REFERENCES:

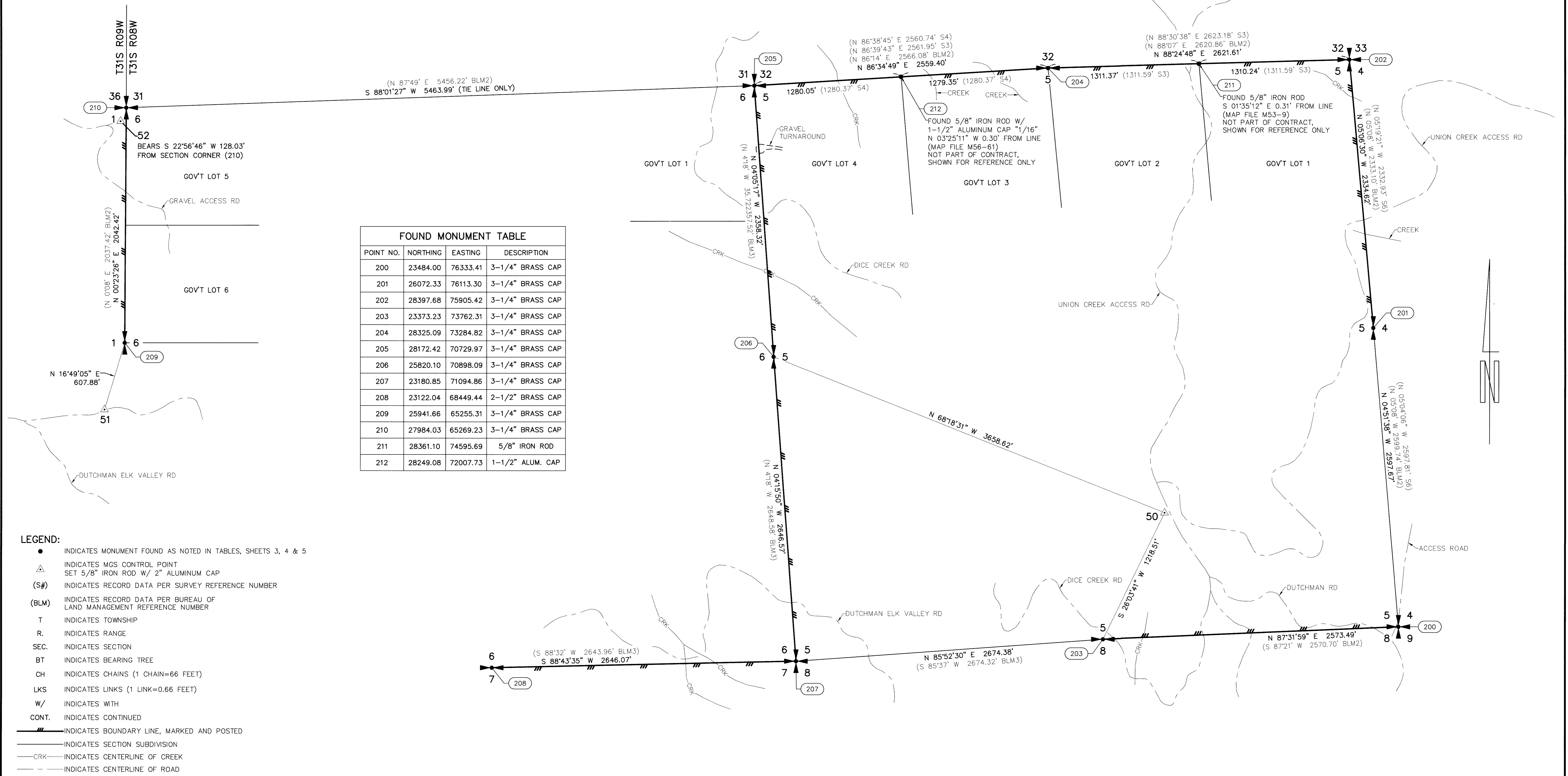
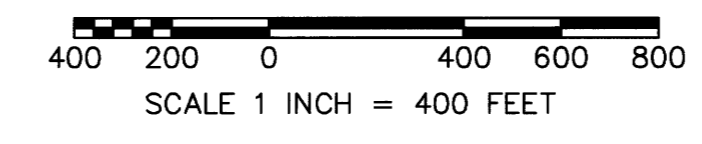
- 1) (1972) GARRETT SURVEY, MAP FILE M91-10
- 2) (1972) GARRETT SURVEY, MAP FILE M91-13
- 3) (1974) STUNTZNER SURVEY, MAP FILE M53-9
- 4) (1976) JOHNSTONE SURVEY, MAP FILE M56-61
- 5) (2001) DEGROOT SURVEY, MAP FILE M137-13
- 6) (2015) NYGREN SURVEY, MAP FILE M169-26

REGISTERED PROFESSIONAL LAND SURVEYOR
Daniel A. Renton
 OREGON
 JUNE 30, 1997
 DANIEL A. RENTON
 2830
 Expires 12-31-2024

RECORD OF SURVEY

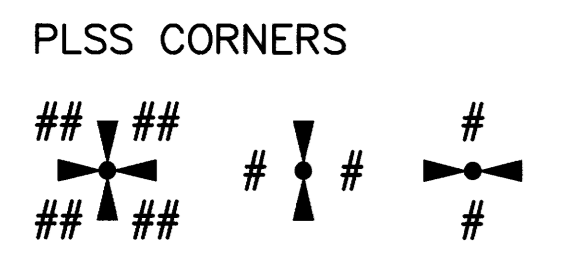
LOCATED IN A PORTION OF
 GOV'T LOTS 1, 2, 3, 4 AND
 THE NW 1/4, NE 1/4, SE 1/4, SW 1/4
 OF SECTION 5 AND THE NE 1/4 OF SECTION 7
 T. 31 S., R. 8 W., W.M., AND IN A PORTION OF
 THE NE 1/4 OF SECTION 1, T. 31 S., R. 9 W., W.M.
 SNAKE EYES 2-TASK H
 DOUGLAS COUNTY, OREGON
 CONTRACT NO. 1204T020D0010
 TASK ORDER NO. 140L4322F0063

FILED
 DATE: 11/29/2023 BY: *DAR*
 THIS SURVEY CONSISTS OF:
 MAP: M178-75 AE
 NARRATIVE:
 CORNER RPT:
 DOUGLAS COUNTY SURVEYOR



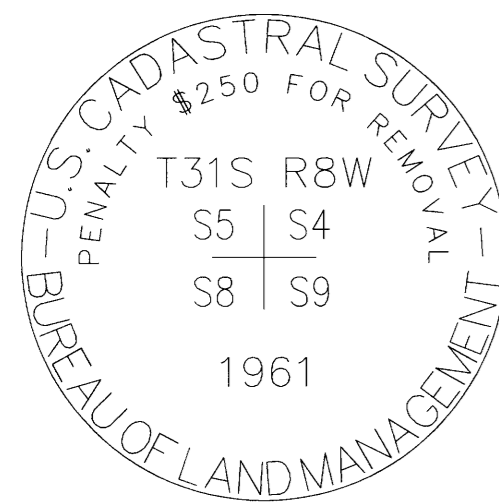
FOUND MONUMENT TABLE			
POINT NO.	NORTHING	EASTING	DESCRIPTION
200	23484.00	76333.41	3-1/4" BRASS CAP
201	26072.33	76113.30	3-1/4" BRASS CAP
202	28397.68	75905.42	3-1/4" BRASS CAP
203	23373.23	73762.31	3-1/4" BRASS CAP
204	28325.09	73284.82	3-1/4" BRASS CAP
205	28172.42	70729.97	3-1/4" BRASS CAP
206	25820.10	70898.09	3-1/4" BRASS CAP
207	23180.85	71094.86	3-1/4" BRASS CAP
208	23122.04	68449.44	2-1/2" BRASS CAP
209	25941.66	65255.31	3-1/4" BRASS CAP
210	27984.03	65269.23	3-1/4" BRASS CAP
211	28361.10	74595.69	5/8" IRON ROD
212	28249.08	72007.73	1-1/2" ALUM. CAP

- LEGEND:**
- INDICATES MONUMENT FOUND AS NOTED IN TABLES, SHEETS 3, 4 & 5
 - ▲ INDICATES MGS CONTROL POINT SET 5/8" IRON ROD W/ 2" ALUMINUM CAP
 - (S#) INDICATES RECORD DATA PER SURVEY REFERENCE NUMBER
 - (BLM) INDICATES RECORD DATA PER BUREAU OF LAND MANAGEMENT REFERENCE NUMBER
 - T INDICATES TOWNSHIP
 - R INDICATES RANGE
 - SEC. INDICATES SECTION
 - BT INDICATES BEARING TREE
 - CH INDICATES CHAINS (1 CHAIN=66 FEET)
 - LKS INDICATES LINKS (1 LINK=0.66 FEET)
 - W/ INDICATES WITH
 - CONT. INDICATES CONTINUED
 - INDICATES BOUNDARY LINE, MARKED AND POSTED
 - INDICATES SECTION SUBDIVISION
 - CRK— INDICATES CENTERLINE OF CREEK
 - INDICATES CENTERLINE OF ROAD

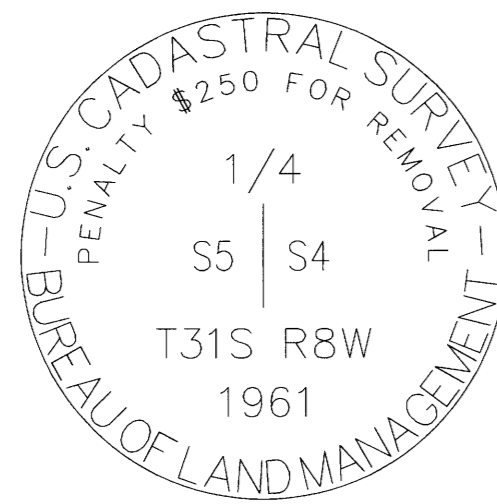


MINISTER-GLAESER SURVEYING INC.
 2200 E. EVERGREEN BLVD.
 VANCOUVER, WA 98661
 (360) 694-3313

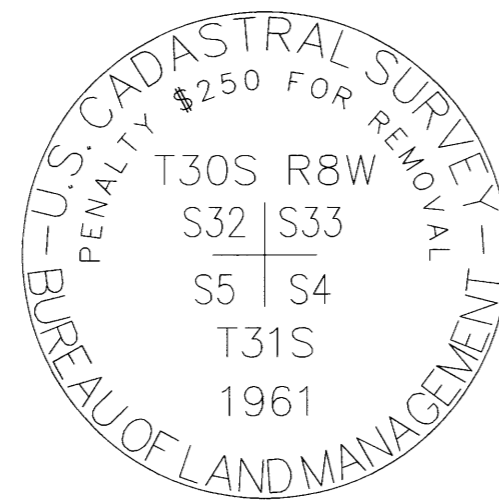
SCALE: 1"=400'
 JOB NO. 22-319
 DATE: 11/29/2023
 CALC BY: *DAR*
 DRAWN BY: *RDH*
 CHECKED BY: *DAR*
 SHEET 2 OF 5



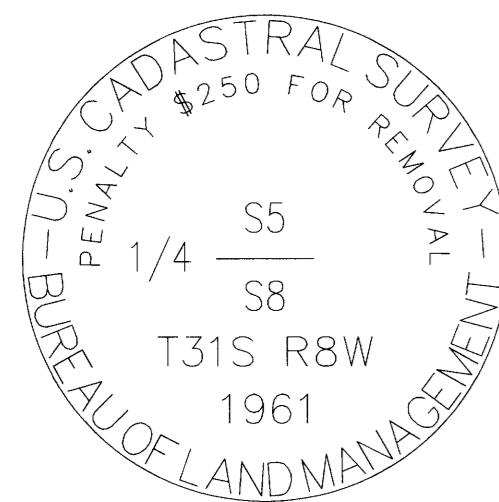
POINT NUMBER: 200



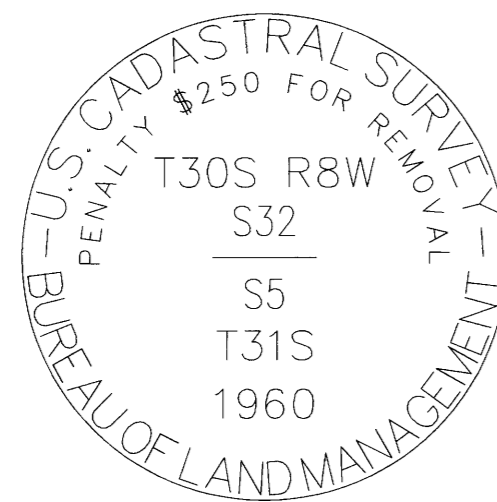
POINT NUMBER: 201



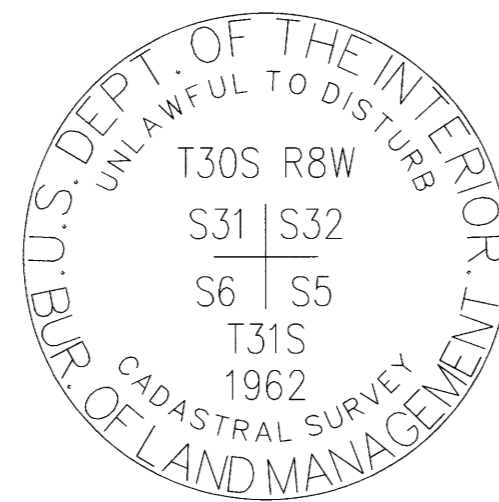
POINT NUMBER: 202



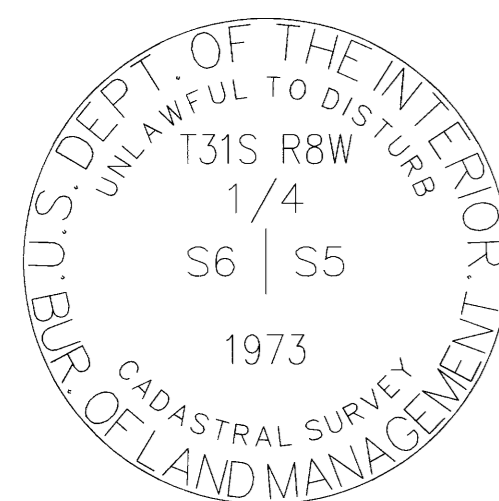
POINT NUMBER: 203



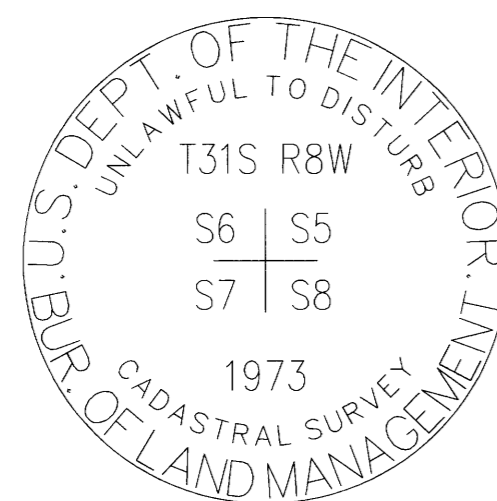
POINT NUMBER: 204



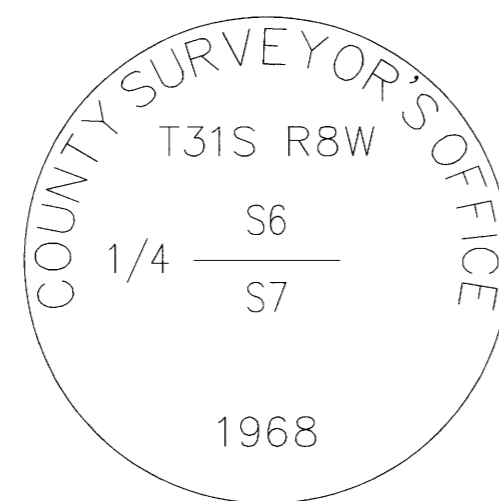
POINT NUMBER: 205



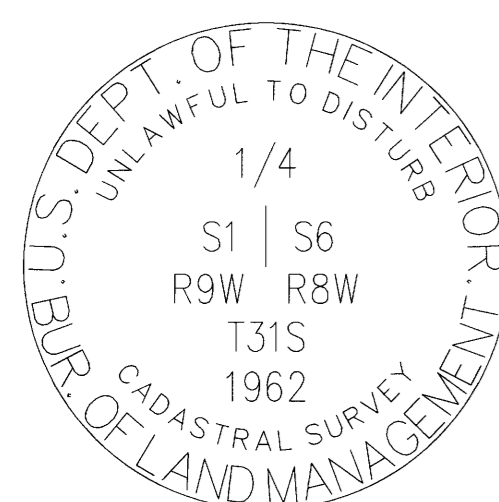
POINT NUMBER: 206



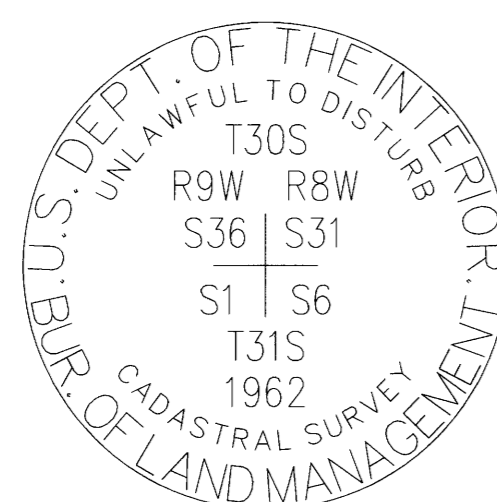
POINT NUMBER: 207



POINT NUMBER: 208



POINT NUMBER: 209



POINT NUMBER: 210

200-FOUND MONUMENT
CORNER E-9, (GCDB 300600)
CORNER OF SECTIONS 4, 5, 8 & 9 T. 31 S., R. 08 W., W.M.

JULY 28, 1882
GLO SURVEY BY W.H. BYARS
UNDER CONTRACT #456
(DCSO RECORDS VOLUME 19, PAGE 8147)
MARKED A CHINQUAPIN, 7" DIA., "T31S R8W S4" ON NE, "S9" ON SE, "S8" ON SW & "S5" ON NW FACE
ALSO 5 NOTCHES ON THE SOUTH & 4 NOTCHES ON THE EAST ANGLE OF SAME, FOR THE CORNER TO SECTIONS 4, 5, 8 & 9 FROM WHICH:
A LAUREL, 10" DIA., BEARS N 42' E, 27 LKS. MKD: T31S R8W S4 BT
A LAUREL, 10" DIA., BEARS S 45' E, 27 LKS. MKD: T31S R8W S9 BT
A FIR, 10" DIA., BEARS S 20' W, 11 LKS. MKD: T31S R8W S8 BT
A LAUREL, 10" DIA., BEARS N 35' W, 20 LKS. MKD: T31S R8W S5 BT

NOVEMBER 1960 - SEPTEMBER 1962
BLM DEPENDENT RESURVEY BY C. ALBERT WHITE, HAROLD D. CORBIN, CADASTRAL SURVEYORS
AND DONALD R. BECK, SURVEY TECHNICIAN
UNDER GROUP #350
(DCSO RECORDS VOLUME 32, PAGES 13206-7)
POINT FOR THE CORNER OF SECTIONS 4, 5, 8 & 9 AT PROPORTIONATE DISTANCE; THERE IS NO REMAINING EVIDENCE OF THE ORIGINAL CORNER.
SET AN IRON POST, 28" LONG, 2-1/2" DIA., 21" IN THE GROUND, WITH BRASS CAP MARKED: T31S R8W S5 S4 S8 S9 1961
FROM WHICH:
A S.PINE, 44" DIA., BEARS N 25' E, 60 LKS. MKD: T31S R8W S4 BT
A FIR, 15" DIA., BEARS S 46-1/2' E, 53 LKS. MKD: T31S R8W S9 BT
A FIR, 25" DIA., BEARS S 49-1/2' W, 46 LKS. MKD: T31S R8W S8 BT
A FIR, 20" DIA., BEARS N 4-1/2' W, 29 LKS. MKD: T31S R8W S5 BT

AUGUST 1972
US DEPARTMENT OF INTERIOR BUREAU OF LAND MANAGEMENT
SURVEY BY DON E. GARRETT RPLS 544
CONTRACT #53500-CT2-334(N)
(MAP FILE M91-13)
FOUND BRASS CAP MARKED: US CADASTRAL SURVEY BLM S4 S5 S8 S9 T31S R8W 1961
A 23" FIR BEARS N 4-1/2' W, 29 LKS. WITH SCAR
A 46" PINE BEARS N 25' E, 60 LKS. WITH SCRIBING
A 15" FIR (NOW STUMP) BEARS S 53-3/4' E, 51 LKS. WITH SCRIBING
SW BEARING TREE IS DOWN

APRIL 2015
GERALD NYGREN FOR SENECA JONES TIMBER CO.
(MAP FILE M169-26)
FOUND 1961 BLM BRASS CAP AND BT'S PER INDEX NO. 300600
A 24" D.FIR BEARS N 4'30" W, 19.1 FT
A 44" PINE, NOW STUMP, N 25'30" E, 39.6 FT
A 15" D.FIR, NOW STUMP, BEARS S 46'30" E, 33.0 FT
NEW: A 10" D.FIR BEARS S 28' E, 12.4 FT SCRIBED: T31S R8W S9 BT
A 7" D.FIR BEARS N 34' E, 23.5 FT SCRIBED: T31S R8W S4 BT
A 14" D.FIR BEARS S 63' W, 13.3 FT SCRIBED: T31S R8W S8 BT

JUNE 8, 2023
GARRETT FINCH AND CREW WITH MINISTER AND GLAESER SURVEYING
FOUND A 3-1/4" BLM BRASS CAP, 0.6 FT ABOVE GROUND FROM WHICH:
A 9" FIR BEARS N 34' E, 23.5 FT WITH HEALED BLAZE AND BT SIGN (2015)
A 26" FIR BEARS N 04' W, 20.1 FT WITH HEALED BLAZE AND BT SIGN (1960)
A 16" FIR BEARS S 63' W, 13.3 FT WITH HEALED BLAZE AND BT SIGN (2015)
A 12" FIR BEARS S 28' E, 12.4 FT WITH HEALED BLAZE AND BT SIGN (2015)
A 33" STUMP (6 FT HIGH) BEARS N 25-1/2' E, 39.6 FT (1960)
A 33" STUMP, DECAYED, BEARS S 46-1/2' E, 33.0 FT (1960)
(SET CHAINING NAIL AT SIDE CENTER, BT SIGNS ON FRONT AND REAR, AND PAINTED RED BAND FOR EXISTING BT'S)

201-FOUND MONUMENT
CORNER C-9, (GCDB 300640)
1/4 CORNER OF SECTIONS 4 & 5 T. 31 S., R. 08 W., W.M.

JULY 28, 1882
GLO SURVEY BY W.H. BYARS
UNDER CONTRACT #456
(DCSO RECORDS VOLUME 19, PAGE 8149)
SET A FIR POST 3 FT LONG, 3" SQUARE, 18" IN THE GROUND, MARKED 1/4 S ON WEST SIDE, FOR THE 1/4 SECTION CORNER FROM WHICH:
A CEDAR, 24" DIA., BEARS S 65' E, 9 LKS. MKD: 1/4 S BT
A W.FIR, 30" DIA., BEARS S 48' W, 6 LKS. MKD: 1/4 S BT

NOVEMBER 1960 - SEPTEMBER 1962
BLM DEPENDENT SURVEY BY C. ALBERT WHITE, HAROLD D. CORBIN, CADASTRAL SURVEYORS
AND DONALD R. BECK, SURVEY TECHNICIAN
UNDER GROUP # 350
(DCSO RECORDS VOLUME 32, PAGES 13208-9)
POINT FOR THE 1/4 SECTION CORNER OF SECTIONS 4 & 5, AT PROPORTIONATE DISTANCE; THERE IS NO REMAINING EVIDENCE OF THE ORIGINAL CORNER
SET AN IRON POST 28" LONG, 2-1/2" DIA., 23" IN THE GROUND WITH BRASS CAP MARKED: 1/4 S5 S4 T31S R8W 1961
FROM WHICH:
A FIR, 23" DIA., BEARS N 35' E, 41 LKS. MKD: 1/4 S4 BT
A W.FIR, 15" DIA., BEARS S 77' W, 42 LKS. MKD: 1/4 S5 BT

APRIL 2015
GERALD NYGREN FOR SENECA JONES TIMBER CO.
(MAP FILE M169-26)
FOUND:
1961 BLM BRASS CAP AND BT'S PER INDEX NO. 300640
A 23" W.FIR, NOW STUMP, BEARS N 35' E, 27.06 FT
NEW:
AN 11" W.FIR BEARS N 84' W, 22.6 FT SCRIBED: 1/4 S5 BT
A 13" D.FIR BEARS N 15' E, 21.4 FT SCRIBED: 1/4 S4 BT

JUNE 6, 2023
GARRETT FINCH AND CREW WITH MINISTER AND GLAESER SURVEYING
FOUND A 3-1/4" BLM BRASS CAP, 0.5 FT ABOVE GROUND FROM WHICH:
A 21" STUMP (4 FT HIGH), DECAYED, BEARS N 35' E, 27.1 FT WITH BT SIGN (1960)
A ROTHOLE BEARS N 84' W, 22.6 FT WITH 12" TRUNK ALONGSIDE WITH VISIBLE SCRIBE "1/4 S5 BT" (2015)
A 14" FIR BEARS N 15' E, 21.4 FT WITH HEALED BLAZE AND BT SIGN (2015)
(SET CHAINING NAIL AT SIDE CENTER, BT SIGNS ON FRONT AND REAR, AND PAINTED RED BAND FOR EXISTING BT'S)

ESTABLISHED THE FOLLOWING:
A 6" FIR BEARS S 40' W, 29.8 FT MKD: 1/4 S5 BT
(SET CHAINING NAIL AT SIDE CENTER, NAIL AND WASHER STAMPED "PLS 2830" AT BASE OF BLAZE, BT SIGNS ON FRONT AND BACK AND PAINTED RED BAND FOR NEW BT)

RECORD OF SURVEY

LOCATED IN A PORTION OF
GOV'T LOTS 1, 2, 3, 4 AND
THE NW 1/4, NE 1/4, SE 1/4, SW 1/4
OF SECTION 5 AND THE NE 1/4 OF SECTION 7
T. 31 S., R. 8 W., W.M., AND IN A PORTION OF
THE NE 1/4 OF SECTION 1, T. 31 S., R. 9 W., W.M.
SNAKE EYES 2-TASK H
DOUGLAS COUNTY, OREGON
CONTRACT NO. 1204T020D0010
TASK ORDER NO. 140L4322F0063

FILED
DATE: 12-5-2023 BY: [Signature]
THIS SURVEY CONSISTS OF:
MAP: M178-75A-E
NARRATIVE:
CORNER RPT:
DOUGLAS COUNTY SURVEYOR

REGISTERED PROFESSIONAL LAND SURVEYOR
Daniel A. Renton
OREGON
JUNE 30, 1997
DANIEL A. RENTON
2830
Expires 12-31-2024

202-FOUND MONUMENT

CORNER A-9, (GCDB 300700)
CORNER OF SECTIONS 4 & 5 T. 31 S., R. 08 W., W.M.
AND 32 & 33 T. 30 S., R. 08 W., W.M.

JULY 28, 1882
GLO SURVEY BY W.H. BYARS, DEPUTY SURVEYOR
UNDER CONTRACT #456
(DCSO RECORDS VOLUME 17, PAGE 7309)
MARKED A LAUREL 14" DIA., FOR THE CORNER TO SECTIONS 4, 5, 32 AND 33 MKD:
"T30S R8W S33" ON THE NE FACE, "T31S S4" ON THE SE FACE; "S5" ON THE SW FACE AND "S32" ON THE NW FACE. ALSO 4 NOTCHES ON THE EAST AND 2 NOTCHES ON THE WEST SIDE FROM WHICH:
A LAUREL 12" DIA., BEARS N 50' E, 49 LKS. DIST. MKD: T30S R8W S33 BT
A LAUREL 16" DIA., BEARS S 70' E, 34 LKS. DIST. MKD: T31S R8W S4 BT
A SUGAR PINE 10" DIA., BEARS S 41' W, 9 LKS. DIST. MKD: T31S R8W S5 BT
A LAUREL 5" DIA., BEARS N 18' W, 27 LKS. DIST. MKD: T30S R8W S32 BT

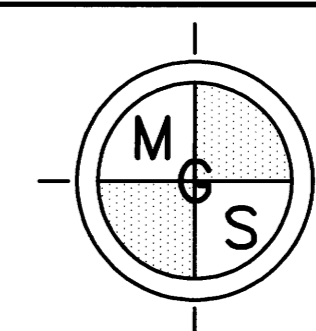
NOVEMBER 1960 - SEPTEMBER 1962
BLM DEPENDENT RESURVEY BY C. ALBERT WHITE, HAROLD D. CORBIN, CADASTRAL SURVEYORS
AND DONALD R. BECK, SURVEY TECHNICIAN
UNDER GROUP #446
(DCSO RECORDS VOLUME 31, PAGE 13192)
THE SECTION CORNER MONUMENTED BY THE ROTTED SHELL OF THE ORIGINAL MADRONE CORNER TREE, 18" DIA., WITH OLD AXE MARKS AND BLAZES VISIBLE, FROM WHICH THE ORIGINAL BEARING TREES:
A MADRONE 15" DIA., BEARS N 56' E, 49 LKS. DIST. WITH HEALED BLAZE (REC. BRG. N 50' E)
A MADRONE 25" DIA., BEARS S 70' E, 34 LKS. DIST. WITH OPENED AND ROTTED BLAZE
A SUGAR PINE 12" DIA., BEARS S 41' W, 9 LKS. DIST. WITH SCRIBE MARKS "T31S R8W" VISIBLE ON PARTIALLY OPENED BLAZE
A DOWN MADRONE 8" DIA., BEARS N 18' W, 27 LKS. DIST. WITH ROTTED BLAZE
AT CORNER POINT:
SET AN IRON POST, 28" LONG, 2-1/2" DIA., 21" IN THE GROUND, WITH BRASS CAP MARKED: T30S R8W S32 S33 S4 S5 T31S 1961
FROM WHICH NEW BEARING TREES:
A FIR 10" DIA., BEARS N 13' E, 60 LKS. DIST. MKD: T30S R8W S33 BT
A CEDAR 12" DIA., BEARS S 37-1/2' E, 73 LKS. DIST. MKD: T31S R8W S4 BT
A CEDAR 8" DIA., BEARS S 77' W, 56 LKS. DIST. MKD: T31S R8W S5 BT
A SUGAR PINE 60" DIA., BEARS N 42' W, 40 LKS. DIST. MKD: T30S R8W S32 BT

MARCH 1974
R.E. STUNTZNER FOR RESERVATION RANCH
(MAP FILE M53-9)
FOUND IRON PIPE WITH 1961 BRASS CAP

APRIL 2015
GERALD NYGREN FOR SENECA JONES TIMBER CO.
(MAP FILE M169-26)
FOUND 1961 BLM BRASS CAP AND BT'S PER INDEX NO. 300700
1882: 10" S.PINE, NOW SNAG, BEARS N 41' W, 8.2 FT, VISIBLE SCRIBE
1961: 18" CEDAR BEARS S 37'30" E, 48.2 FT, VISIBLE SCRIBE
12" CEDAR BEARS S 77' W, 37.0 FT
60" S.PINE, NOW STUMP, BEARS N 42' W, 26.4 FT, VISIBLE SCRIBE
NEW: 16" CEDAR BEARS N 27' E, 24.1 FT, SCRIBED: "T30S R8W S33 BT"
9" D.FIR BEARS N 45' W, 60.2 FT, SCRIBED: "T30S R8W S32 BT"

MAY 2020 - FEBRUARY 2021
BLM DEPENDENT RESURVEY BY JEFFREY O. COVINGTON, CADASTRAL SURVEYOR
UNDER GROUP #2972
(DCSO RECORDS VOLUME 59, PAGE 23949)
THE CORNER OF SECTIONS 4, 5, 32 AND 33, REPORTED BY WHITE AND CORBIN IN 1960-1962; PERPETUATED BY NYGREN, IN 2015; MONUMENTED WITH AN IRON POST, 2-1/2" DIA., FIRMLY SET, PROJECTING 12" ABOVE GROUND, IN MOUND OF STONE, 2 FT BASE, 8" HIGH, WITH A BRASS CAP (PROPERLY) MARKED
FROM WHICH THE REMAINS OF THE BT'S REPORTED BY WHITE AND CORBIN:
A CEDAR, 18" DIA., BEARS S 37-1/2' E, 48.2 FT WITH HEALED BLAZE
A SUGAR PINE SNAG, 10" DIA., BEARS S 34' W, 8.5 FT WITH SCRIBE MARKS "T31S R8W S5 B" VISIBLE ON OPEN BLAZE (ORIGINAL RECORD, S 41' W, 5.9 FT)
A CEDAR, 12" DIA., BEARS S 77' W, 37.0 FT WITH HEALED BLAZE
A DECAYED SUGAR PINE STUMP, 60" DIA., BEARS N 42' W, 26.4 FT, WITH SCRIBE MARKS "T30S R8W S32 BT" VISIBLE ON OPEN BLAZE
AND THE BEARING TREES MARKED BY NYGREN:
A CEDAR, 17" DIA., BEARS N 24-3/4' E, 28.8 FT, WITH SCRIBE MARKS "T30S R8W S33 BT" VISIBLE ON PARTIALLY HEALED BLAZE
A FIR, 11" DIA., BEARS N 46-1/4' W, 59.9 FT, WITH SCRIBE MARKS "T30S R8W S32 BT" VISIBLE ON PARTIALLY HEALED BLAZE

JUNE 6, 2023
GARRETT FINCH AND CREW WITH MINISTER AND GLAESER SURVEYING
FOUND A 3-1/4" BLM BRASS CAP IN MOUND OF STONE, 1.3 FT ABOVE GROUND FROM WHICH:
A 10" SNAG BEARS S 34' W, 8.5 FT WITH BT SIGN AND SCRIBING "T31S R8W S5 B" (1882)
A 13" CEDAR BEARS S 77' W, 37.2 FT WITH HEALED BLAZE, BT SIGN AND SIDE NAIL (1961)
AN 11" FIR BEARS N 46-1/4' W, 59.9 FT WITH HEALED BLAZE, BT SIGN AND SIDE NAIL (2015)
A 52" STUMP (5 FT HIGH) BEARS N 42' W, 26.4 FT WITH BT SIGN AND SCRIBING "T30S R8W S32 BT" (1961)
A 17" CEDAR BEARS N 24-3/4' E, 23.8 FT WITH BT SIGN AND SCRIBING "T30S R8W S33 BT" (2015)
A 17" CEDAR BEARS S 37-1/2' E, 48.2 FT WITH HEALED BLAZE AND BT SIGN (1961)
A 17" MADRONE BEARS N 50' E, 29.7 FT WITH HEALED BLAZE AND BT SIGN (1882)
A 17" MADRONE BEARS S 70' E, 22.4 FT WITH ROTTED BLAZE AND BT SIGN (1882)
A 14" STUMP (2 FT HIGH), DECAYED, BEARS N 13' E, 40.2 FT (1961)
(SET CHAINING NAIL AT SIDE CENTER, BT SIGNS ON FRONT AND REAR, AND PAINTED RED BAND FOR EXISTING BT'S, SET NAIL AT TOP CENTER FOR STUMPS)



MINISTER-GLAESER SURVEYING INC.
2200 E. EVERGREEN BLVD.
VANCOUVER, WA 98661
(360) 694-3313

SCALE: N/A
JOB NO. 22-319
DATE: 11/29/2023
CALC BY: DAR
DRAWN BY: RDH
CHECKED BY: DAR
SHEET 3 OF 5

203—FOUND MONUMENT

CORNER E-7, (GCDB 240600)
1/4 CORNER OF SECTIONS 5 & 8 T. 31 S., R. 08 W., W.M.

JULY 28, 1882
GLO SURVEY BY W.H. BYARS
UNDER CONTRACT #456
(DCSO RECORDS VOLUME 19, PAGE 8162)
MARKED A HEMLOCK POST 3 FT LONG, 3" SQUARE, 18" IN THE GROUND, 1/4 S FOR THE 1/4 SECTION CORNER FROM WHICH:
A HEMLOCK, 14" DIA., BEARS EAST, 20 LKS, MKD: 1/4 S BT
A HEMLOCK, 12" DIA., BEARS S 85° W, 33 LKS. MKD: 1/4 S BT

NOVEMBER 1960 — SEPTEMBER 1962
BLM DEPENDENT RESURVEY BY C. ALBERT WHITE, HAROLD D. CORBIN, CADASTRAL SURVEYORS
AND DONALD R. BECK, SURVEY TECHNICIAN
UNDER GROUP #350

(DCSO RECORDS VOLUME 32, PAGES 13209-10)
THE 1/4 SECTION CORNER OF SECTIONS 5 & 8, DETERMINED AT RECORD BEARING AND DISTANCE FROM THE REMAINS OF THE ORIGINAL BEARING TREES:
A STUMP HOLE, WITH ROOTS OF A HEMLOCK REMAINING, BEARS EAST 20 LKS
A HEMLOCK, 16" DIA., BEARS S 85° W, 33 LKS, WITH OLD AXE MARKS VISIBLE ON OPENED BLAZE AT CORNER POINT:
SET IRON POST, 28" LONG, 4" DIA, 25" IN THE GROUND, WITH BRASS CAP MKD:
1/4 S5 S8 T31S R8W 1961
FROM WHICH NEW BT'S:
A HEMLOCK, 8" DIA., BEARS N 3-1/2° W, 48 LKS, MKD: 1/4 S5 BT
A HEMLOCK, 10" DIA., BEARS S 18° W, 17 LKS, MKD: 1/4 S8 BT

AUGUST — OCTOBER 1973
BLM DEPENDENT RESURVEY BY CHARLES E. AKIN, JR., CADASTRAL SURVEYOR
UNDER GROUP #819
(DCSO RECORDS VOLUME 36, PAGES 14935-6)
THE 1/4 SECTION CORNER OF SECTIONS 5 & 8, MONUMENTED WITH AN IRON POST, 2-1/2" DIA., FIRMLY SET, PROTRUDING 6" ABOVE GROUND, WITH BRASS CAP (PROPERLY) MKD, FROM WHICH THE REMAINS OF THE ORIGINAL BEARING TREES:
A STUMP HOLE, WITH ROOTS OF A HEMLOCK REMAINING, BEARS EAST, 20 LKS
A HEMLOCK, 17" DIA., BEARS S 85° W, 33 LKS, WITH OLD AXE MARKS VISIBLE ON OPENED BLAZE AND BEARING TREES MARKED BY WHITE, CORBIN AND BECK:
A HEMLOCK, 10" DIA., BEARS N 3-1/2° W, 48 LKS, WITH FRAGMENTARY SCRIBE MARKS VISIBLE ON PARTIALLY HEALED BLAZE
A HEMLOCK, 12" DIA., BEARS S 18° W, 17 LKS, WITH FRAGMENTARY SCRIBE MARKS VISIBLE ON PARTIALLY HEALED BLAZE

JUNE 6, 2023
GARRETT FINCH AND CREW WITH MINISTER AND GLAESER SURVEYING
FOUND A 3-1/4" BLM BRASS CAP, 0.6 FT ABOVE GROUND FROM WHICH:
A 14" SNAG (60 FT HIGH) BEARS S 18° W, 10.5 FT WITH HEALED DOUBLE BLAZE AND BT SIGN (1960)
A ROTTED STUMP (30" HIGH) BEARS S 82° W, 22.8 FT (1973)
(SET CHAINING NAIL AT SIDE CENTER, BT SIGNS ON FRONT AND REAR, AND PAINTED RED BAND FOR EXISTING BT'S)

ESTABLISHED THE FOLLOWING:
A 15" HEMLOCK BEARS S 46° W, 9.9 FT MKD: 1/4 S8 BT
A 15" FIR BEARS N 57° E, 8.7 FT MKD: 1/4 S5 BT
(SET CHAINING NAIL AT SIDE CENTER, NAIL AND WASHER STAMPED "PLS 2830" AT BASE OF BLAZE, BT SIGNS ON FRONT AND BACK AND PAINTED RED BAND FOR NEW BT)

204—FOUND MONUMENT

CORNER A-7, (GCDB 240700)
1/4 CORNER OF SECTION 5 T. 31 S., R. 08 W., W.M. AND SECTION 32 T. 30 S., R. 08 W., W.M.

JULY 28, 1882
GLO SURVEY BY W.H. BYARS, DEPUTY SURVEYOR
UNDER CONTRACT #456
(DCSO RECORDS VOLUME 17, PAGES 7308-09)
SET A FIR POST 3 FT LONG, 3" SQUARE, 18" IN THE GROUND MKD: 1/4 S ON NORTH SIDE FOR THE 1/4 SECTION CORNER, FROM WHICH:
A FIR, 6" DIA. BEARS S 25° E, 19 LKS. DIST. MKD: 1/4 S BT
A FIR, 12" DIA., BEARS N 54° W, 10 LKS. DIST. MKD: 1/4 S BT

NOVEMBER 1960 — SEPTEMBER 1962
BLM DEPENDENT RESURVEY BY C. ALBERT WHITE, HAROLD D. CORBIN, CADASTRAL SURVEYORS
AND DONALD R. BECK, SURVEY TECHNICIAN
UNDER GROUP #446

(DCSO RECORDS VOLUME 31, PAGES 13191)
THE 1/4 SECTION CORNER, DETERMINED AT RECORD BEARING AND DISTANCE FROM THE REMAINING ORIGINAL BEARING TREE:
A FIR 27" DIA., BEARS N 54° W, 10 LKS. DIST. MKD: 1/4 ON PARTIALLY OPENED BLAZE AT THE CORNER POINT:
SET AN IRON POST, 28" LONG, 2-1/2" DIA., 22" IN THE GROUND, WITH BRASS CAP MKD:
T30S R8W 1/4 S32 S5 T31S 1960
FROM WHICH NEW BEARING TREES:
A FIR 19" DIA., BEARS N 30° W, 49 LKS. DIST. MKD: 1/4 S32 BT
A FIR 15" DIA., BEARS S 77° E, 20 LKS. DIST. MKD: 1/4 S5 BT

MARCH 1974
R.E. STUNTZNER FOR RESERVATION RANCH
(MAP FILE M53-9)
FOUND IRON PIPE WITH 1960 BRASS CAP AND BT'S, BY CADASTRALS

NOVEMBER 1976
HOWARD W. JOHNSTONE FOR ROSEBURG LUMBER COMPANY
FOUND 1960 CADASTRAL BRASS CAP FROM WHICH:
A 28" FIR BEARS N 56° W, 6.7 FT OBT
A 16" FIR STUMP BEARS S 78-1/2° E, 12.0 FT

JUNE 5, 2023
GARRETT FINCH AND CREW WITH MINISTER AND GLAESER SURVEYING
FOUND A 3-1/4" BLM BRASS CAP, 0.5 FT ABOVE GROUND FROM WHICH:
A 25" ROTTED STUMP (3 FT HIGH) BEARS N 52° W, 6.6 FT (1882)
A 15" ROTTED STUMP BEARS S 82° E, 12.1 FT WITH HEALED BLAZE, BARK SCRIBE "X", PROP LINE SIGN (1960)
A 23" ROTTED STUMP BEARS N 28° W, 31.3 FT (1960)
(SET CHAINING NAIL AT SIDE CENTER, BT SIGNS ON FRONT AND REAR, AND PAINTED RED BAND FOR EXISTING BT'S)

ESTABLISHED THE FOLLOWING:
A 17" FIR BEARS N 22° E, 25.8 FT MKD: 1/4 S32 BT
A 9" FIR BEARS S 41° E, 19.85 FT MKD: 1/4 S5 BT
(SET CHAINING NAIL AT SIDE CENTER, NAIL AND WASHER STAMPED "PLS 2830" AT BASE OF BLAZE, BT SIGNS ON FRONT AND BACK AND PAINTED RED BAND FOR NEW BT'S)

205—FOUND MONUMENT

CORNER A-5, (GCDB 200100)
CORNER OF SECTIONS 5 & 6 T. 31 S., R. 08 W., W.M.
AND SECTIONS 31 & 32 T. 30 S., R. 08 W., W.M.

JULY 28, 1882
GLO SURVEY BY W.H. BYARS, DEPUTY SURVEYOR
UNDER CONTRACT #456
(DCSO RECORDS VOLUME 17, PAGE 7308)
SET A CEDAR POST 4-1/2 FT LONG, 4" SQUARE, 24" IN THE GROUND, FOR THE CORNER TO SECTIONS 5, 6, 31 AND 32, MARKED T30S R8W S32 ON THE NORTHEAST FACE, T31S S5 ON THE SOUTHEAST FACE; S6 ON THE SOUTHWEST FACE; AND S31 ON THE NORTHWEST FACE, ALSO 5 NOTCHES ON THE EAST AND 1 NOTCH ON THE WEST ANGLES OF THE SAME, FROM WHICH:
A FIR 12" DIA., BEARS N 21° E, 56 LKS. DIST. MKD: T30S R8W S32 BT
A FIR 50" DIA., BEARS S 16° E, 40 LKS. DIST. MKD: T31S R8W S5 BT
A FIR 14" DIA., BEARS S 53° W, 28 LKS. DIST. MKD: T31S R8W S6 BT
A FIR 10" DIA., BEARS N 40° W, 8 LKS. DIST. MKD: T30S R8W S31 BT

NOVEMBER 1960 — SEPTEMBER 1962
BLM DEPENDENT RESURVEY BY C. ALBERT WHITE, HAROLD D. CORBIN, CADASTRAL SURVEYORS
AND DONALD R. BECK, SURVEY TECHNICIAN
UNDER GROUP #446

(DCSO RECORDS VOLUME 31, PAGES 13190-91)
THE SECTION CORNER, DETERMINED AT RECORD BEARING AND DISTANCE FROM THE REMAINING ORIGINAL BEARING TREES:
A FIR 62" DIA., BEARS S 16° E, 40 LKS. DIST. MKD: T31S R8W S5 BT, ON BARK BLAZE
A FIR SNAG 10" DIA., N 40° W, 8 LKS. DIST. MKD: W, ON OPEN BLAZE AT THE CORNER POINT:
SET AN IRON POST, 28" LONG, 2-1/2" DIA., 22" IN THE GROUND, WITH BRASS CAP MKD:
T30S R8W S31 S32 S6 S5 T31S 1962
FROM WHICH NEW BEARING TREES:
A FIR 23" DIA., BEARS N 85° E, 66 LKS. DIST. MKD: T30S R8W S32 BT
A FIR 15" DIA., BEARS S 42° E, 25 LKS. DIST. MKD: T31S R8W S5 BT
A CEDAR 6" DIA., BEARS S 89° W, 43 LKS. DIST. MKD: T31S R8W S6 BT
A FIR 47" DIA., BEARS N 21-1/2° W, 43 LKS. DIST. MKD: T30S R8W S31 BT (ON BARK)

SEPTEMBER 1972
US DEPARTMENT OF INTERIOR BUREAU OF LAND MANAGEMENT
SURVEY BY DON E. GARRETT RPLS 544
CONTRACT #53500-CT2-334(N)
(MAP FILE M91-10)
FOUND BRASS CAP MARKED:
US CADASTRAL SURVEY BLM 1962 S5 S6 T31S & S31 S32 T30S R8W
62" FIR BEARS S 17-1/2° E, 40 LKS. (BARK SCRIBE)
18" FIR BEARS S 42° E, 25 LKS. (SHOWS SCAR)
47" FIR BEARS N 21° W, 42 LKS. (BARK SCRIBE)
26" FIR BEARS N 85° E, 66 LKS. (SHOWS SCRIBING)
8" CEDAR BEARS S 89° W, 42 LKS. (SHOWS SCRIBING)

AUGUST — OCTOBER 1973
BLM RESURVEY BY CHARLES E. AKIN, JR., CADASTRAL SURVEYOR
UNDER GROUP #819

(DCSO RECORDS VOLUME 36, PAGES 14937-38)
THE SECTION CORNER, MONUMENTED WITH AN IRON POST 2-1/2" DIA., FIRMLY SET, PROTRUDING 6" ABOVE GROUND WITH BRASS CAP MARKED IN 1962, FROM WHICH REMAINS OF THE ORIGINAL BEARING TREES:
A FIR SNAG 63" DIA., BEARS S 16° E, 40 LKS. DIST., WITH FRAGMENTARY SCRIBE MARKS VISIBLE ON BARK BLAZE
A FIR SNAG 12" DIA., BEARS N 40° W, 8 LKS. DIST., WITH NO MARKS VISIBLE ON ROTTED BLAZE AND BEARING TREES MARKED BY WHITE, CORBIN AND BECK:
A W.FIR 18" DIA., BEARS S 42° E, 25 LKS. DIST., WITH HEALED BLAZE
A CEDAR 8" DIA., BEARS S 89° W, 43 LKS. DIST., WITH SCRIBE MARKS T31S R8W S6 BT, VISIBLE ON PARTIALLY HEALED BLAZE
A FIR 50" DIA., BEARS N 21-1/2° W, 43 LKS. DIST., WITH SCRIBE MARKS T30S R8W S31 BT, VISIBLE ON BARK BLAZE
AND BEARING TREES MARKED BY JOHN POWELL, DEPUTY COUNTY SURVEYOR IN 1967:
A W.FIR 14" DIA., BEARS N 2-1/2° E, 48 LKS. DIST., WITH HEALED BLAZE
A W.FIR 26" DIA., BEARS N 21° E, 56 LKS. DIST., WITH HEALED BLAZE
(NOTE: THE ABOVE BT'S REPORTED AS TO BE BY POWELL WERE NOT OF RECORD IN ANY MATERIALS GIVEN TO ME FOR THIS PROJECT. A "RENEWAL" NUMBER WAS NOT LISTED ON THE "OLD" VISUAL PAGE.) V. LAUGEN, JUNE 1977

MARCH 1974
R.E. STUNTZNER FOR RESERVATION RANCH
(MAP FILE M53-9)
FOUND IRON PIPE WITH 1962 BRASS CAP AND BT'S, BY CADASTRALS

JUNE 7, 2023
GARRETT FINCH AND CREW WITH MINISTER AND GLAESER SURVEYING
FOUND A 3-1/4" BLM BRASS CAP, 0.5 FT ABOVE GROUND FROM WHICH:
A 12" ROTTED STUMP (18" HIGH) BEARS N 30° W, 5.2 FT (1973)
A 50" SNAG (80 FT HIGH) BEARS N 16° W, 29.4 FT WITH BARK SCRIBE MKD: T30S R8W S31 BT (1972)
A 59" STUMP METAL TOP (8 FT HIGH) BEARS S 16° E, 27.7 FT WITH HEALED BLAZE AND BT SIGN (1972)
A 24" STUMP METAL TOP BEARS S 42° E, 16.8 FT, TRUNK ALONGSIDE (1960)
A 10" CEDAR BEARS S 89° W, 27.4 FT WITH HEALED BLAZE AND BT SIGN (1960)
(SET CHAINING NAIL AT SIDE CENTER, BT SIGNS ON FRONT AND REAR, AND PAINTED RED BAND FOR EXISTING BT'S)

ESTABLISHED THE FOLLOWING:
A 7" FIR BEARS N 06° W, 27.5 FT MKD: T30S R8W S31 BT
A 6" CEDAR BEARS S 70° E, 6.9 FT MKD: T31S R8W S5 BT
A 12" HEMLOCK BEARS N 33° E, 37.8 FT MKD: T30S R8W S32 BT
(SET CHAINING NAIL AT SIDE CENTER, NAIL AND WASHER STAMPED "PLS 2830" AT BASE OF BLAZE, BT SIGNS ON FRONT AND BACK AND PAINTED RED BAND FOR NEW BT'S)

206—FOUND MONUMENT

CORNER C-5, (GCDB 200640)
1/4 CORNER OF SECTIONS 5 & 6 T. 31 S., R. 08 W., W.M.

JULY 28, 1882
GLO SURVEY BY W.H. BYARS, DEPUTY SURVEYOR
UNDER CONTRACT #456
(DCSO RECORDS VOLUME 19, PAGE 8165)
SET A YEW POST 3 FT LONG, 3" SQUARE, 18" IN THE GROUND, MAKRED 1/4 S FOR THE 1/4 SECTION CORNER FROM WHICH:
A CEDAR, 6" DIA., BEARS N 10° E, 16 LKS. MKD: 1/4 S BT
A FIR, 48" DIA., BEARS S 20° W, 15 LKS. MKD: 1/4 S BT

AUGUST — OCTOBER 1973
BLM DEPENDENT RESURVEY BY CHARLES E. AKIN JR., CADASTRAL SURVEYOR
UNDER GROUP #819
(DCSO RECORDS VOLUME 36, PAGE 14937)
POINT FOR 1/4 SECTION CORNER OF SECTIONS 5 & 6, AT PROPORTIONATE DISTANCE; THERE IN NO REMAINING EVIDENCE OF THE ORIGINAL CORNER.
SET IRON POST, 28" LONG, 2-1/2" DIA., 22" IN THE GROUND, WITH BRASS CAP MARKED:
T31S R8W 1/4 S6 S5 1973
FROM WHICH:
A FIR, 13" DIA., BEARS N 89° E, 53 LKS. MKD: 1/4 S5 BT
A W.FIR, 12" DIA., BEARS S 20° W, 36-1/2 LKS. MKD: 1/4 S6 BT

RECORD OF SURVEY

LOCATED IN A PORTION OF
GOV'T LOTS 1, 2, 3, 4 AND
THE NW 1/4, NE 1/4, SE 1/4, SW 1/4
OF SECTION 5 AND THE NE 1/4 OF SECTION 7
T. 31 S., R. 8 W., W.M., AND IN A PORTION OF
THE NE 1/4 OF SECTION 1, T. 31 S., R. 9 W., W.M.
SNAKE EYES 2—TASK H
DOUGLAS COUNTY, OREGON
CONTRACT NO. 1204T020D0010
TASK ORDER NO. 140L4322F0063

FILED
DATE: 12-5-2023 BY: *DR*
THIS SURVEY CONSISTS OF:
MAP: *M178-75 A-E*
NARRATIVE:
CORNER RPT:
DOUGLAS COUNTY
SURVEYOR

REGISTERED
PROFESSIONAL
LAND SURVEYOR
OREGON
JUNE 30, 1997
DANIEL A. RENTON
2830
Expires 12-31-2024

206 CONT.

NOVEMBER 24, 2003
CARL SWEEDEN
(C.S. FILE 85/48-48)
FOUND 3-1/4" BRASS CAP ON 2-1/2" IRON PIPE PUSHED OUT OF POSITION, LEANING NORTH BY LOG AGAINST SOUTH SIDE, REMOVED LOG & RESET CAP & PIPE IN VERTICAL POSITION USING BT AND BT STUMP, 1973 BLM:
A 19" D.FIR, N 89° E, 34.98 FT HEALED DOUBLE BLAZE, TAG
ROTTED REMAINS OF BT STUMP S 20° W, 24.09 FT, REMNANT OF BT ON GROUND, SCRIBE FD "1/4 S6 BT" NEW:
18" D.FIR N 10° E, 34.4 FT, SCRIBED "W 1/4 S5 BT", TAG
10" R.CEDAR S 24° E, 24.5 FT, SCRIBED "W 1/4 S5 BT", TAG
NO REASONABLE TREES IN SECTION 6 TO MARK
NOTE:
CORNER IS LOCATED ON EAST FACE OF SLOPE ON WEST SIDE OF NORTH/SOUTH DRAINAGE

JUNE 7, 2023
GARRETT FINCH AND CREW WITH MINISTER AND GLAESER SURVEYING
FOUND A 3-1/4" BLM BRASS CAP, 0.9 FT ABOVE GROUND FROM WHICH:
A 12" CEDAR BEARS S 24° E, 24.5 FT WITH PARTIAL HEALED BLAZE WITH ILLEGIBLE SCRIBE & BT SIGN (2003)
A 20" FIR BEARS N 10° E, 34.4 FT WITH HEALED BLAZE AND BT SIGN (2003)
A 23" FIR BEARS N 89° E, 35.0 FT WITH HEALED DOUBLE BLAZE AND BT SIGN (1973)
A ROTTED 16" STUMP (2 FT HIGH) BEARS S 16° W, 24.1 FT (1973)
(SET CHAINING NAIL AT SIDE CENTER, BT SIGNS ON FRONT AND REAR, AND PAINTED RED BAND FOR EXISTING BT'S)

ESTABLISHED THE FOLLOWING:
A 7" FIR BEARS N 86° W, 31.0 FT MKD: 1/4 S6 BT
(SET CHAINING NAIL AT SIDE CENTER, NAIL AND WASHER STAMPED "PLS 2830" AT BASE OF BLAZE, BT SIGNS ON FRONT AND BACK AND PAINTED RED BAND FOR NEW BT)

207—FOUND MONUMENT

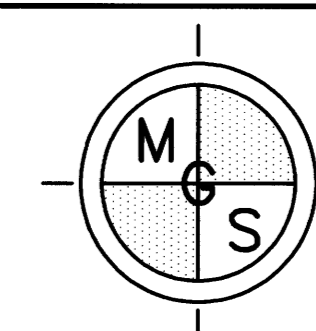
CORNER E-5, (GCDB 200600)
CORNER OF SECTIONS 5, 6, 7 & 8 T. 31 S., R. 08 W., W.M.

JULY 28, 1882
GLO SURVEY BY W.H. BYARS, DEPUTY SURVEYOR
UNDER CONTRACT #456
(DCSO RECORDS VOLUME 19, PAGES 8161-2)
SET A FIR POST 4 FT LONG, 4" SQUARE, 20" IN THE GROUND, MARKED T31S R8W S5 ON THE NORTHEAST, S8 ON THE SOUTHEAST, S7 ON THE SOUTHWEST AND S6 ON THE NW FACES. ALSO 5 NOTCHES ON THE EAST AND SOUTH ANGLES OF THE SAME FOR THE CORNER TO SECTIONS 5, 6, 7 & 8, FROM WHICH:
A FIR, 12" DIA., BEARS N 4° E, 28 LKS. MKD: T31S R8W S5 BT
A FIR, 16" DIA., BEARS S 20° E, 5 LKS. MKD: T31S R8W S8 BT
A FIR, 14" DIA., BEARS S 77° W, 22 LKS. MKD: T31S R8W S7 BT
A FIR, 12" DIA., BEARS N 39° W, 17 LKS. MKD: T31S R8W S6 BT

MARCH 1968
BY DCSO JP
(C.S. FILE 54/36-37)
REPORTED AS NOT FOUND, AREA BADLY BURNT & ROTTED

AUGUST — OCTOBER 1973
BLM DEPENDENT RESURVEY BY CHARLES E. AKIN JR., CADASTRAL SURVEYOR
UNDER GROUP #819
(DCSO RECORDS VOLUME 36, PAGE 14935)
POINT FOR THE CORNER OF SECTIONS 5, 6, 7 & 8 AT PROPORTIONATE DISTANCE; THERE IS NO REMAINING EVIDENCE OF THE ORIGINAL CORNER.
SET AN IRON POST, 28" LONG, 2-1/2" DIA., 22" IN THE GROUND, WITH BRASS CAP MARKED:
T31S R8W S5 S6 S7 S8 1973
FROM WHICH:
A FIR, 8" DIA., BEARS N 37° E, 37 LKS. MKD: T31S R8W S5 BT
A FIR, 13" DIA., BEARS S 22-1/2° E, 24 LKS. MKD: T31S R8W S8 BT
A FIR, 10" DIA., BEARS S 24-1/2° W, 28 LKS. MKD: T31S R8W S7 BT
A FIR, 10" DIA., BEARS N 82° W, 17-1/2 LKS. MKD: T31S R8W S6 BT

JUNE 8, 2023
GARRETT FINCH AND CREW WITH MINISTER AND GLAESER SURVEYING
FOUND A 3-1/4" BLM BRASS CAP, 0.7 FT ABOVE GROUND FROM WHICH:
A 23" FIR BEARS N 82° W, 11.6 FT WITH HEALED DOUBLE BLAZE (1973)
A 14" FIR BEARS N 37° E, 24.4 FT WITH HEALED DOUBLE BLAZE AND BT SIGN (1973)
A 20" FIR BEARS S 22-1/2° E, 15.8 FT WITH HEALED DOUBLE BLAZE AND BT SIGN (1973)
A 19" FIR BEARS S 24-1/2° W, 18.5 FT WITH HEALED DOUBLE BLAZE AND BT SIGN (1973)
(SET CHAINING NAIL AT SIDE CENTER, BT SIGNS ON FRONT AND REAR, AND PAINTED RED BAND FOR EXISTING BT'S)



MINISTER—GLAESER
SURVEYING INC.
2200 E. EVERGREEN BLVD.
VANCOUVER, WA 98661
(360) 694-3313

SCALE: *N/A*
JOB NO. *22-319*
DATE: *11/29/2023*
CALC BY: *DAR*
DRAWN BY: *RDH*
CHECKED BY: *DAR*
SHEET *4* OF *5*

208-FOUND MONUMENT

CORNER E-3, (GCDB 140600)
1/4 CORNER OF SECTIONS 6 & 7 T. 31 S., R. 08 W., W.M.

JULY 28, 1882
GLO SURVEY BY W.H. BYARS
UNDER CONTRACT #456
(DCSO RECORDS VOLUME 19, PAGE 8164)
SET STONE 18X12X10", 8" IN THE GROUND, MARKED 1/4 ON NORTH SIDE FOR THE 1/4 SECTION CORNER AND FROM WHICH:
A FIR, 26" DIA., BEARS N 12' E, 58 LKS. MKD: 1/4 S BT
A FIR, 72" DIA., BEARS S 10' W, 38 LKS. MKD: 1/4 S BT

MARCH 7, 1968
DOUGLAS COUNTY SURVEYORS OFFICE JOHN M. POWELL, FRANK JONES AND W. PENLEY
(C.S. FILE 54/36-36)
FOUND:
STONE MKD "1/4", ALSO UNRECORDED 3/4" IRON PIPE
26", NOW 48" D.FIR, N 12' E, 38.3 FT, TREE PARTIALLY OPENED, NO SCRIBE VISIBLE, STARTING TO SHOW BURL
72" D.FIR, NOW 7.0, S 10' W, 25.1 FT, BARK SCRIBE VISIBLE
SET:
BRASS CAP AT CORNER MKD: COUNTY SURVEYORS OFFICE 1/4 S6 S7 1968
NEW BT'S:
8" W.FIR S 75' W, 23.3 FT MKD: 1/4 S7 CS BT
6" W. FIR N 9' E, 9.1 FT MKD: 1/4 S6 CS BT

AUGUST - OCTOBER 1973 (PER 1975 BLM PLAT MAP)
BLM DEPENDENT RESURVEY BY CHARLES E. AKIN JR., CADASTRAL SURVEYOR
UNDER GROUP #819
(DCSO RECORDS VOLUME 36, PAGE 14936)
THE 1/4 SECTION CORNER OF SECTIONS 6 & 7, PERPETUATED AND RECORDED BY POWELL, IN 1968, MONUMENTED WITH IRON PIPE, 1" DIA., FIRMLY SET, PROTRUDING 10" ABOVE GROUND WITH THE ORIGINAL BASALT STONE ALONGSIDE, 18X12X10", FIRMLY SET, 10" IN THE GROUND, MKD: 1/4 ON NORTH FACE, WITH BRASS CAP (PROPERLY) MARKED FROM WHICH THE REMAINS OF THE ORIGINAL BEARING TREES:
A FIR, 50" DIA., BEARS N 12' E, 58 LKS, WITH NO MARKS VISIBLE ON OPENED BLAZE
A FIR STUMP, 75" DIA., BEARS S 10' W, 38 LKS, WITH FRAGMENTARY SCRIBE MARKS VISIBLE ON BARK BLAZE AND BEARING TREES MARKED BY POWELL:
A W.FIR, 8" DIA., BEARS N 09' W, 14 LKS, WITH FRAGMENTARY SCRIBE MARKS VISIBLE ON PARTIALLY HEALED BLAZE
A W.FIR, 10" DIA., BEARS S 75' W, 35 LKS, WITH FRAGMENTARY SCRIBE MARKS VISIBLE ON PARTIALLY HEALED BLAZE

JUNE 8, 2023
GARRETT FINCH AND CREW WITH MINISTER AND GLAESER SURVEYING
FOUND A 2-1/2" COUNTY SURVEYORS OFFICE BRASS CAP, 1.0 FT ABOVE GROUND FROM WHICH:
A 1/2" IRON PIPE BEARS WEST 0.1 FT
A 22" FIR BEARS N 12' E, 9.4 FT WITH HEALED DOUBLE BLAZE (1968)
A 22" FIR BEARS S 75' W, 23.5 FT WITH HEALED BLAZE AND BT SIGN (1968)
AN 89" FIR BEARS S 10' W, 28.6 FT WITH HEALED BLAZE AND BT SIGN (1882)
A 40" STUMP BEARS N 12' E, 38.5 FT WITH BT SIGN ON TOP (1882)
(SET CHAINING NAIL AT SIDE CENTER, BT SIGNS ON FRONT AND REAR, AND PAINTED RED BAND FOR EXISTING BT'S)

209-FOUND MONUMENT

CORNER C-1, (GCDB 100640)
1/4 CORNER OF SECTION 1 T. 31 S., R. 09 W., W.M. AND SECTION 6 T. 31 S., R. 08 W., W.M.

JULY 28, 1882
GLO SURVEY BY W.H. BYARS, DEPUTY SURVEYOR
UNDER CONTRACT #456
(DCSO RECORDS VOLUME 19, PAGES 8108)
SET FIR POST 3 FT LONG, 3" DIA., 20" IN THE GROUND MARKED 1/4 S ON THE WEST SIDE FOR THE 1/4 SECTION CORNER, AND FROM WHICH:
A LAUREL 7" DIA., BEARS N 80' E, 11 LKS. DIST. MKD: 1/4 S BT
A FIR 5" DIA., BEARS S 85' W, 11 LKS. DIST. MKD: 1/4 S BT

DECEMBER 20, 1900
GLO SURVEY BY W.H. BYARS, DEPUTY SURVEYOR
UNDER CONTRACT #727
(DCSO RECORDS VOLUME 19, PAGES 8243)
POST GONE. WITNESS TREES STANDING. SET A FIR POST 4 FT LONG, 4" SQUARE, 24" IN THE GROUND MKD S6 ON THE EAST AND S1 1/4 S ON THE W FACES, FOR THE 1/4 SECTION CORNER AT THE POINT INDICATED BY THE WITNESS TREES FROM THE FIELD NOTES FURNISHED BY THE SURVEYOR GENERAL.

NOVEMBER 1960 - SEPTEMBER 1962
BLM RESURVEY BY C. ALBERT WHITE, HAROLD D. CORBIN, CADASTRAL SURVEYORS
AND DONALD R. BECK, SURVEY TECHNICIAN
UNDER GROUP #446
(DCSO RECORDS VOLUME 31, PAGES 13188-89)
THE 1/4 SECTION CORNER, DETERMINED AT RECORD BEARING AND DISTANCE FROM THE REMAINING ORIGINAL BEARING TREE:
A FIR 20" DIA., BEARS S 85' W, 11 LKS. DIST. MKD: 1/4 S, ON PARTIALLY OPENED BLAZE AT THE CORNER POINT:
SET AN IRON POST, 28" LONG 2-1/2" DIA., 22" IN THE GROUND. WITH BRASS CAP MKD:
1/4 S1 R9W S6 R8W T31S 1962
FROM WHICH NEW BEARING TREES:
A FIR 20" DIA., BEARS N 67-1/2' E, 24 LKS MKD: 1/4 S6 BT
A FIR 13" DIA., BEARS N 74-1/2' W, 41 LKS MKD: 1/4 S1 BT

JUNE 2001
KRIS DEGROOT FOR ROSEBURG RESOURCES
(MAP FILE M137-13)
FOUND:
2-1/2" IRON POST BY USBLM IN 1962, FIRMLY SET FLUSH WITH GROUND ON A STEEP NORTHEAST SLOPE, WITH 3-1/4" USBLM BRASS CAP PROPERLY MKD
FROM WHICH AN ORIGINAL BT BY BYARS IN 1882:
20" FIR SNAG BEARS N 89' W, 7.0 FT SCRIBED "1/4 S" ON PARTIALLY OPENED FACE (REC. S 85' W, 11 LKS)
BT'S BY WHITE & CORBIN IN 1962:
24" ROTTED D.FIR HIGH STUMP BEARS N 64' W, 16.0 FT WITH HEALED BLAZE (REC. N 67-1/2' W, 24 LKS)
17" D.FIR BEARS N 70' W, 26.9 FT WITH HEALED FACE (REC. N 74-1/2' W, 41 LKS)
NEW BT'S:
18" D.FIR BEARS S 54' W, 12.9 FT SCRIBED "1/4 S1 BT"
5/8"X30" IRON ROD W/ PLASTIC CAP MKD: "BTS ENG-SURV" BEARS S 31' E, 20.0 FT
5/8"X30" IRON ROD W/ PLASTIC CAP MKD: "BTS ENG-SURV" BEARS N 31' W, 15.0 FT
NOTE: ALL NEW BT'S HAVE DOUBLE BLAZED FACES WITH BRASS WASHER STAMPED "PLS 1941" NAIL INTO LOWER BLAZE. BEARINGS ARE TAKEN TO THE CENTER OF THE TREE AT THE ROOT CROWN AND DISTANCES ARE MEASURED TO A NAIL IN THE ROOT CROWN AT THE CENTER OF THE TREE, ALL BT'S HAVE A 6" RED BAND PAINTED AROUND THE TREE AND BLAZED FACE PAINTED RED AND BT SIGNS NAILED TO THE TREE.

JUNE 9, 2023
GARRETT FINCH AND CREW WITH MINISTER AND GLAESER SURVEYING
FOUND A 3-1/4" BLM BRASS CAP, 0.2 FT ABOVE GROUND FROM WHICH:
A 20" SNAG BEARS S 56' W, 12.9 FT WITH DOUBLE BLAZE MKD: "1/4 S1 BT", WASHER AND BT SIGN (2001)
A 19" STUMP (6 FT HIGH) BEARS N 62' E, 16.1 FT WITH HEALED BLAZE (1960)
A ROOTHOLE BEARS N 74' W, 30.0 FT WITH 12" TRUNK ALONGSIDE AND BT SIGN (1960)
A 5/8" IRON ROD WITH ILLEGIBLE YPC BEARS N 31' W, 15.0 FT MKD: "BTS" (2001)
A 5/8" IRON ROD WITH ILLEGIBLE YPC BEARS S 31' E, 20.0 FT (2001)
A ROTTED 20" STUMP BEARS S 88' W, 7.8 FT WITH PARTIAL BLAZE, TRUNK ALONGSIDE (1882)
(SET CHAINING NAIL AT SIDE CENTER, BT SIGNS ON FRONT AND REAR, AND PAINTED RED BAND FOR EXISTING BT'S)

ESTABLISHED THE FOLLOWING:
AN 8" FIR BEARS N 66' E, 10.6 FT MKD: 1/4 S6 BT
A 7" FIR BEARS N 02' W, 10.5 FT MKD: 1/4 S1 BT
(SET CHAINING NAIL AT SIDE CENTER, NAIL AND WASHER STAMPED "PLS 2830" AT BASE OF BLAZE, BT SIGNS ON FRONT AND BACK AND PAINTED RED BAND FOR NEW BT'S)

210-FOUND MONUMENT

CORNER A-25, (GCDB 700700) CORNER OF:
SECTION 1 T. 31 S., R. 09 W., W.M.
SECTION 6 T. 31 S., R. 08 W., W.M.
SECTION 31 T. 30 S., R. 8 W., W.M.
SECTION 36 T. 30 S., R. 09 W., W.M.

APRIL 12, 1855
GLO SURVEY BY DENNIS HATHORN, DEPUTY SURVEYOR
UNDER CONTRACT #57
(DCSO RECORDS VOLUME 17, PAGE 7372)
SET POST, CORNER OF TOWNSHIP 30 & 31 S., RANGE 8 & 9 W., FROM WHICH:
A FIR 12" DIA., BEARS N 2' E, 43 LKS. DIST.
A FIR 10" DIA., BEARS N 63' W, 25 LKS. DIST.
A FIR 15" DIA., BEARS S 75' W, 38 LKS. DIST.
A FIR 30" DIA., BEARS S 40' E, 57 LKS. DIST.

NOVEMBER 1960 - SEPTEMBER 1962
BLM RESURVEY BY C. ALBERT WHITE, HAROLD D. CORBIN, CADASTRAL SURVEYORS
AND DONALD R. BECK, SURVEYING TECHNICIAN
UNDER GROUP #446
(DCSO RECORDS VOLUME 31, PAGE 13189)
THE CORNER OF TOWNSHIP 30 & 31 S., RANGE 8 & 9 W., DETERMINED FROM REMAINS OF THE ORIGINAL BEARING TREES:
A DOWN FIR 27" DIA., BEARS N 2' E, 36 LKS. DIST., 43 LKS. SLOPE DIST., MKD. WITH A HEALED BLAZE (REC. DIST. 43 LKS.)
A FIR 51" DIA., BEARS S 38' E, 59 LKS. DIST. TO THE FACE, MKD. WITH OLD AXE MARKS AND ROTTING BARK BLAZE (REC. S 40' E, 57 LKS.)
A FIR 35" DIA., BEARS S 68' W, 38 LKS. DIST. MKD. WITH A HEALED BLAZE (REC. BRG. S 75' W), REMARKED T31S R9W S1 BT
A FIR 27" DIA., BEARS N 72-1/2' W, 25 LKS. DIST. MKD. WITH A HEALED BLAZE (REC. BRG. N 63' W), REMARKED T30S R9W S36 BT
AT THE CORNER POINT:
SET AN IRON POST, 28" LONG, 2-1/2" DIA., 22" IN THE GROUND, WITH BRASS CAP MKD:
T30S R9W R8W S36 S31 S1 S6 T31S 1962
FROM WHICH:
A FIR 35" DIA., BEARS N 54-1/4' E, 53 LKS. DIST. MKD: T30S R8W S31 BT
A FIR 15" DIA., BEARS S 22-1/2' E, 25 LKS. DIST. MKD: T31S R8W S6 BT

SEPTEMBER 1972
US DEPARTMENT OF INTERIOR BUREAU OF LAND MANAGEMENT
SURVEY BY DON E. GARRETT RPLS 544
CONTRACT #53500-CT2-334(N)
(MAP FILE M 91-10)
FOUND BRASS CAP MARKED:
US CADASTRAL SURVEY BLM 1962 T30S, S31 R8W, S36 R9W, T31S, S6 R8W, S1 R9W
27" FIR BEARS N 73' W, 25 LKS. (SHOWS SCAR)
34" FIR BEARS S 68' W, 38 LKS. (SHOWS SCRIBING)
16" FIR BEARS S 23' E, 26 LKS. (SHOWS SCAR)
33" FIR BEARS N 54-1/4' E, 53 LKS. (SHOWS SCAR)

JUNE 12, 2023
GARRETT FINCH AND CREW WITH MINISTER AND GLAESER SURVEYING
FOUND A 3-1/4" BLM BRASS CAP, 0.4 FT ABOVE GROUND FROM WHICH:
A 35" FIR BEARS N 72-1/2' W, 17.6 FT WITH HEALED BLAZE AND BT SIGN (1855)
A 39" FIR BEARS S 68' W, 25.0 FT WITH HEALED BLAZE (1855)
AN 18" FIR (DEAD) BEARS S 22-1/2' E, 16.5 FT WITH HEALED BLAZE (1960)
A 42" STUMP (5 FT HIGH) BEARS S 38' E, 40.4 FT (1855)
A 39" FIR BEARS N 54-1/4' E, 35.0 FT WITH HEALED BLAZE AND BT SIGN (1960)
A ROOTHOLE BEARS N 02' E, 29.4 FT WITH ROTTED TRUNK ALONGSIDE (1855)
(SET CHAINING NAIL AT SIDE CENTER, BT SIGNS ON FRONT AND REAR, AND PAINTED RED BAND FOR EXISTING BT'S)

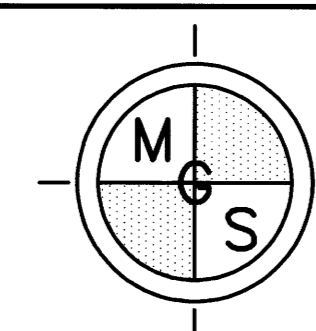
ESTABLISHED THE FOLLOWING:
A 6" FIR BEARS S 65' E, 45.1 FT MKD: T31S R8W S6 BT
(SET CHAINING NAIL AT SIDE CENTER, NAIL AND WASHER STAMPED "PLS 2830" AT BASE OF BLAZE, BT SIGNS ON FRONT AND BACK AND PAINTED RED BAND FOR NEW BT)

RECORD OF SURVEY

LOCATED IN A PORTION OF
GOV'T LOTS 1, 2, 3, 4 AND
THE NW 1/4, NE 1/4, SE 1/4, SW 1/4
OF SECTION 5 AND THE NE 1/4 OF SECTION 7
T. 31 S., R. 8 W., W.M., AND IN A PORTION OF
THE NE 1/4 OF SECTION 1, T. 31 S., R. 9 W., W.M.
SNAKE EYES 2-TASK H
DOUGLAS COUNTY, OREGON
CONTRACT NO. 1204T020D0010
TASK ORDER NO. 140L4322F0063

FILED
DATE: 12-5-2023 BY: D
THIS SURVEY CONSISTS OF:
MAP: M178-75A-E
NARRATIVE:
CORNER RPT:
DOUGLAS COUNTY
SURVEYOR

REGISTERED
PROFESSIONAL
LAND SURVEYOR
11/29/2023
Daniel A. Renton
OREGON
JUNE 30, 1997
DANIEL A. RENTON
2830
Expires 12-31-2024



MINISTER-GLAESER
SURVEYING INC.
2200 E. EVERGREEN BLVD.
VANCOUVER, WA 98661
(360) 694-3313

SCALE: N/A
JOB NO. 22-319
DATE: 11/29/2023
CALC BY: DAR
DRAWN BY: RDH
CHECKED BY: DAR
SHEET 5 OF 5