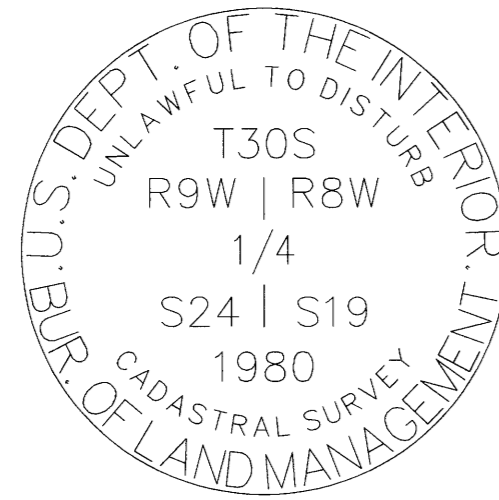
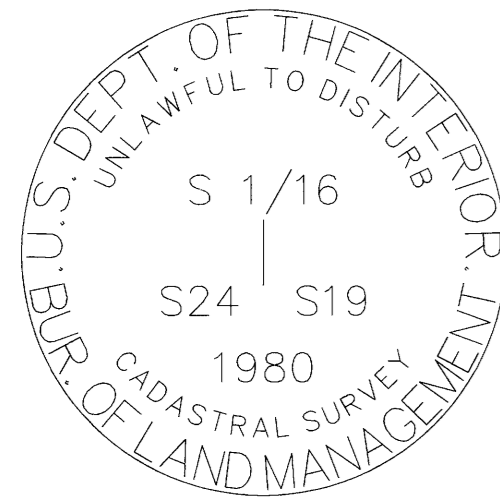


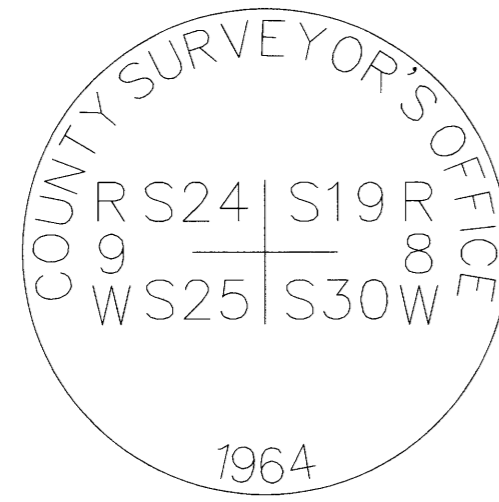
POINT NUMBER: 200



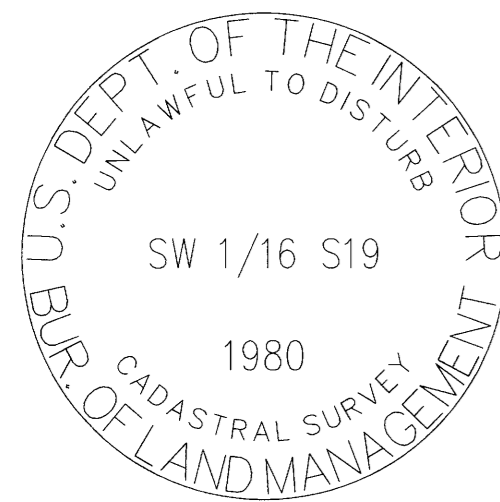
POINT NUMBER: 201



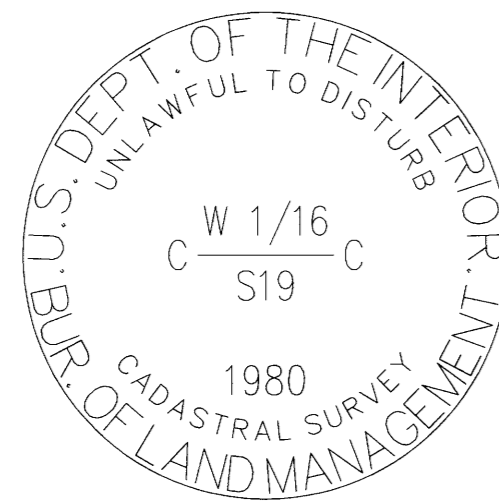
POINT NUMBER: 202



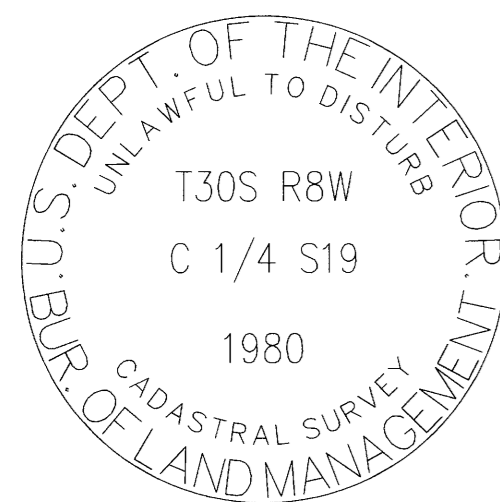
POINT NUMBER: 203



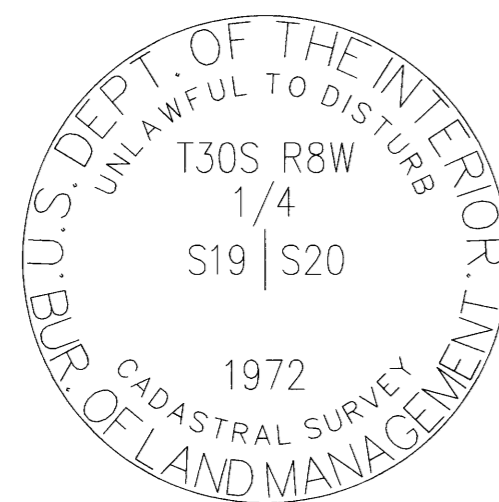
POINT NUMBER: 204



POINT NUMBER: 205



POINT NUMBER: 206



POINT NUMBER: 207

200—FOUND MONUMENT

CORNER N-1, (GCDB 100400) CORNER OF SECTIONS 18 & 19 T. 30 S., R. 08 W., W.M. AND SECTIONS 13 & 24 T. 30 S., R. 09 W., W.M.

APRIL 12, 1855 GLO SURVEY BY DENNIS HATHORN, DEPUTY SURVEYOR UNDER CONTRACT #57 (DCSO RECORDS VOLUME 17, PAGES 7370-71) MARKED A LAUREL, CORNER OF SECTIONS 13, 24, 18 AND 19, FROM WHICH: A FIR 15" DIA., BEARS N 35' E, 60 LKS. DIST. A FIR 24" DIA., BEARS S 26' E, 154 LKS. DIST. A CHINQUAPIN 5" DIA., BEARS S 45' W, 32 LKS. DIST. A LAUREL 5" DIA., BEARS N 70' W, 35 LKS. DIST.

OCTOBER - NOVEMBER 1882 GLO SURVEY BY WILLIAM H. BYARS UNDER CONTRACT #456 INTERSECT WEST BOUNDARY OF THE TOWNSHIP, 58 LKS. NORTH OF THE CORNER TO SECTIONS 13, 18, 19 & 24, WHICH IS A POST 5" SQUARE FIRMLY SET IN THE GROUND MARKED: T30S R9W S18 ON NE, S19 ON SE, R9W S24 ON SW AND S13 ON NW FACES, WITH 3 NOTCHES ON N & S EDGES FROM WHICH: A FIR 15" DIA., BEARS N 35' E, 60 LKS. DIST. MKD: T30S R9W S18 BT A FIR 24" DIA., BEARS S 26' E, 154 LKS. DIST. MKD: T30S R9W S19 BT A CHINQUAPIN 5" DIA., BEARS S 45' W, 42 LKS. DIST. MKD: T30S R9W S24 BT A LAUREL 5" DIA., BEARS N 70' W, 35 LKS. DIST. MKD: T30S R9W S13 BT

AUGUST 1964 DOUGLAS COUNTY SURVEYOR'S OFFICE VERNON "RAY" TRACY AND CREW (C.S. FILE 53/53-55) FOUND SQUARED POST FROM WHICH: A 15" NOW 34" D. FIR BEARS N 35' E, 39.6 FT, FAINT BARK SCRIBE "BT" AND OTHER NOT LEGIBLE A 24" D. FIR NOW DOWN AND ROTTED, BEARS S 26' E, 101.6 FT, FOUND PART OF OLD FACE AND AXE MARKS IN ROTTEN REMNANTS NO TRACE OF LAUREL OR CHINQUAPIN IN SW OR NW SET 1" IRON PIPE AND BRASS CAP MKD: COUNTY SURVEYOR'S OFFICE 1964 R9W S13 S24 S18 S19 R8W NEW BT'S: AN 8" D. FIR BEARS N 87' E, 8.8 FT MKD: T30S R9W S18 CS BT AN 8" D. FIR BEARS N 43' W, 10.0 FT MKD: T30S R9W S13 CS BT AN 8" D. FIR BEARS S 52' W, 12.4 FT MKD: T30S R9W S24 CS BT A 13" D. FIR BEARS S 19' E, 26.7 FT MKD: T30S R9W S19 CS BT

MARCH 1973 BRUCE A. SHANER FOR MOORE MILL AND LUMBER CO. (MAP FILE M49-16) FOUND BRASS CAP SET BY COUNTY SURVEYOR IN 1964 FROM WHICH: A 34" ORIGINAL DOUGLAS FIR BEARS N 35' E, 39.6' POSSIBLE BARK SCRIBE A 10" DOUGLAS FIR BEARS N 87' E, 8.8" A 10" DOUGLAS FIR BEARS N 43' W, 10.0" AN 8" DOUGLAS FIR BEARS S 52' W, 12.4" A 13" DOUGLAS FIR BEARS S 19' E, 26.7"

APRIL 1980 BLM RESURVEY BY JAMES E. JELLEY AND WAYNE L. ROGERS, CADASTRAL SURVEYORS UNDER GROUP #1021 (DCSO RECORDS VOLUME 45, PAGE 17280) FOUND AND USED

JULY - AUGUST 2002 BLM RESURVEY BY A. BERT SKEESICK, CADASTRAL SURVEYOR UNDER GROUP #2009 (DCSO RECORDS VOLUME 54, PAGES 21064-5) BEGINNING AT THE CORNER OF SECTIONS 13, 18, 19 AND 24 ON THE EAST BOUNDARY OF THE TOWNSHIP, MONUMENTED WITH AN IRON POST, 1-1/2" DIA., FIRMLY SET, PROJECTING 13" ABOVE GROUND, WITH BRASS CAP MKD FROM WHICH THE REMAINS OF THE ORIGINAL BEARING TREES: A DECAYED STUMP, 30" DIA., SPECIES INDETERMINATE, BEARS N 35' E, 38.2 FT, WITH NO MARKS VISIBLE (RECORD, FIR, 39.6 FT) AND REMAINS OF BEARING TREES MKD BY TRACY IN 1964 AND REPORTED BY JELLEY AND ROGERS: A FIR, 17" DIA., BEARS N 85' E, 8.6 FT, WITH HEALED DOUBLE BLAZE A ROTHOLE BEARS S 20' E, 26.4 FT, WITH FALLEN TRUNK, 16" DIA, SPECIES INDETERMINATE, LYING ALONGSIDE AND HEALED BLAZE (RECORD, FIR) A ROTHOLE BEARS S 55' W, 12.5 FT, WITH FALLEN TRUNK, 8" DIA. SPECIES INDETERMINATE, LYING ALONGSIDE AND HEALED BLAZE (RECORD, FIR) A ROTHOLE BEARS N 41-3/4' W, 9.9 FT, WITH FALLEN TRUNK, 13" DIA, SPECIES INDETERMINATE, LYING ALONGSIDE AND HEALED BLAZE (RECORD, FIR) AND NEW BEARING TREES: A FIR, 13" DIA., BEARS N 62-1/2' E, 44.8 FT, MKD: T30S R8W S18 BT A FIR, 8" DIA., BEARS S 53-3/4', 27.2 FT, MKD: X BT A FIR, 10" DIA., BEARS N 59-1/2' W, 49.4 FT, MKD: T30S R9W S13 BT EACH NEW BEARING TREE HAS A 2-1/2" X 1/4" MAGNETIC NAIL (MAG NAIL) DRIVEN AT THE BASE RIGHT SIDE-CENTER, UNLESS OTHERWISE DESCRIBED IN THE CORNER DESCRIPTION

APRIL 2013 - FEBRUARY 2014 BLM RESURVEY BY GEORGE M. WINTER, CADASTRAL SURVEYOR UNDER GROUP #2698 (DCSO RECORDS VOLUME 58, PAGES 23158-9) THE CORNER OF SECTIONS 13, 18, 19, AND 24 ON THE WEST BOUNDARY OF THE TOWNSHIP, MONUMENTED WITH AN IRON POST, 1-1/2" DIA., FIRMLY SET, PROJECTING 13" ABOVE GROUND, WITH BRASS CAP (PROPERLY) MKD FROM WHICH THE REMAINS OF THE ORIGINAL BEARING TREES: A DECAYED FIR STUMP, 52" DIA., BEARS N 35' E, 38.2 FT, WITH HEALED BLAZE AND THE REMAINS OF BEARING TREES MKD BY THE DOUGLAS COUNTY SURVEYOR'S OFFICE IN 1964: A FIR, 20" DIA., BEARS N 85' E, 8.6 FT, WITH HEALED DOUBLE BLAZE A ROTHOLE BEARS S 20' E, 26.4 FT, WITH DECAYED TRUNK LAYING ALONGSIDE, 14" DIA., WITH HEALED BLAZE A ROTHOLE BEARS S 55' W, 12.5 FT, WITH DECAYED TRUNK LAYING ALONGSIDE, 8" DIA., NO MARKS A ROTHOLE BEARS N 41-3/4' W, 9.9 FT, WITH FIR TRUNK LAYING ALONGSIDE, 12" DIA., WITH FRAGMENTARY SCRIBE MARKS VISIBLE AND BEARING TREES MKD BY SKEESICK IN 2002: A FIR, 16" DIA., BEARS N 62-1/2' E, 44.8 FT, WITH HEALED BLAZE A FIR, 9" DIA., BEARS S 53-3/4' W, 27.2 FT, WITH HEALED DOUBLE BLAZE A FIR, 13" DIA., BEARS N 59-1/2' W, 49.4 FT, WITH HEALED BLAZE

MAY 24, 2023 GARRETT FINCH AND CREW WITH MINISTER AND GLAESER SURVEYING FOUND 2-1/2" COUNTY SURVEYOR'S OFFICE BRASS CAP, 0.9 FT ABOVE GROUND FROM WHICH: A 22" FIR BEARS N 85' E, 8.6 FT, WITH HEALED DOUBLE BLAZE AND BT SIGNS (1964) A 19" FIR BEARS N 62-1/2' E, 45.1 FT, WITH HEALED BLAZE AND BT SIGNS (2002) A 16" FIR BEARS N 59-1/2' W, 49.6 FT, WITH HEALED BLAZE AND BT SIGN (2002) A 12" FIR BEARS S 53-3/4' W, 27.2 FT, WITH HEALED DOUBLE BLAZE AND BT SIGNS (2002) A ROTHOLE BEARS N 41-3/4' W, 9.9 FT, 8" TRUNK LYING ALONGSIDE, INDETERMINATE SPECIES (1964) A 59" STUMP BEARS N 35' E, 38.2 FT, NO REMAINING EVIDENCE (1855) A ROTHOLE BEARS S 20' E, 26.4 FT, 14" TRUNK LYING ALONGSIDE, INDETERMINATE SPECIES (1964) A ROTHOLE BEARS S 55' W, 12.5 FT, 6" TRUNK LYING ALONGSIDE, INDETERMINATE SPECIES (1964) (SET CHAINING NAIL AT SIDE CENTER, BT SIGNS ON FRONT AND REAR, AND PAINTED RED BAND FOR EXISTING BT'S)

201—FOUND MONUMENT

CORNER P-1, (GCDB 100340) 1/4 CORNER OF SECTION 19 T. 30 S., R. 08 W., W.M. AND SECTION 24 T. 30 S., R. 09 W., W.M.

APRIL 12, 1855 GLO SURVEY BY DENNIS HATHORN, DEPUTY SURVEYOR UNDER CONTRACT #57 (DCSO RECORDS VOLUME 17, PAGE 7371) SET 1/4 SECTION POST FROM WHICH: A W. OAK 12" DIA., BEARS N 50' W, 94 LKS. DIST. A W. OAK 12" DIA., BEARS S 02' E, 171 LKS. DIST.

APRIL 1980 BLM RESURVEY BY JAMES E. JELLEY AND WAYNE L. ROGERS, CADASTRAL SURVEYORS UNDER GROUP #1021 (DCSO RECORDS VOLUME 45, PAGE 17280) POINT FOR THE 1/4 SECTION CORNER, AT PROPORTIONATE DISTANCE; THERE IS NO REMAINING EVIDENCE OF THE ORIGINAL CORNER. SET AN IRON POST, 28" LONG, 2-1/2" DIA., 24" IN THE GROUND, WITH BRASS CAP MKD: T30S R9W R8W 1/4 S24 S19 1980 FROM WHICH: A FIR 13" DIA., BEARS S 28' E, 7-1/2 LKS. DIST. MKD: 1/4 S19 BT A FIR 13" DIA., BEARS N 56-1/2' W, 24 LKS. DIST. MKD: 1/4 S24 BT

MAY 24, 2023 GARRETT FINCH AND CREW WITH MINISTER AND GLAESER SURVEYING FOUND 3-1/4" BLM BRASS CAP, 0.3 FT ABOVE GROUND FROM WHICH: A 15" FIR, DEAD, BEARS S 28' E, 5.4 FT, WITH HEALED DOUBLE BLAZE AND BT SIGN (1980) A ROTHOLE BEARS N 56-1/2' W, 15.9 FT, TRUNK ALONGSIDE MKD: 1/4 S24 BT (1980) (SET CHAINING NAIL AT SIDE CENTER, BT SIGNS ON FRONT AND REAR, AND PAINTED RED BAND FOR EXISTING BT'S)

ESTABLISHED THE FOLLOWING: A 12" FIR BEARS N 80' W, 10.1 FT MKD: 1/4 S24 BT A 10" OAK BEARS N 22' E, 11.0 FT MKD: 1/4 S19 BT (SET CHAINING NAIL AT SIDE CENTER, NAIL AND WASHER STAMPED "PLS 2830" AT BASE OF BLAZE, BT SIGNS ON FRONT AND BACK AND PAINTED RED BAND FOR NEW BT'S)

202—FOUND MONUMENT

(GCDB 100120) SOUTH 1/16 CORNER OF SECTION 19 T. 30 S., R. 08 W., W.M. AND SECTION 24 T. 30 S., R. 09 W., W.M.

APRIL 1980 BLM DEPENDENT RESURVEY BY JAMES E. JELLEY & WAYNE L. ROGERS, CADASTRAL SURVEYORS UNDER GROUP #1021 (DCSO RECORDS VOLUME 45, PAGE 17279) POINT FOR THE S/16 SECTION CORNER OF SECTION 19 & 24 SET AN IRON POST, 28" LONG, 2-1/2" DIA., 24" IN THE GROUND, WITH BRASS CAP MKD: S 1/16 S24 S19 1980 FROM WHICH: A FIR, 8" DIA., BEARS N 49' E, 67 LKS. DIST. MKD: S 1/16 S19 BT A FIR, 12" DIA., BEARS N 76-1/2' W, 21 LKS. DIST. MKD: S 1/16 S24 BT

MAY 24, 2023 GARRETT FINCH AND CREW WITH MINISTER AND GLAESER SURVEYING FOUND 3-1/4" BLM BRASS CAP, 0.3 FT ABOVE GROUND FROM WHICH: A 23" FIR BEARS N 76-1/2' W, 14.2 FT, WITH HEALED BLAZE (1980) A 25" FIR BEARS N 49' E, 44.6 FT, WITH HEALED BLAZE AND BT SIGN (1980) (SET CHAINING NAIL AT SIDE CENTER, BT SIGNS ON FRONT AND REAR, AND PAINTED RED BAND FOR EXISTING BT'S)

203—FOUND MONUMENT

CORNER N-1, (GCDB 100300) CORNER OF SECTIONS 19 & 30 T. 30 S., R. 08 W., W.M. AND SECTION 24 & 25 T. 30 S., R. 09 W., W.M.

APRIL 12, 1855 GLO SURVEY BY DENNIS HATHORN, DEPUTY SURVEYOR UNDER CONTRACT #57 (DCSO RECORDS VOLUME 17, PAGE 7371) SET POST, CORNER OF SECTIONS 24, 25, 19 AND 30 FROM WHICH: A FIR 20" DIA., BEARS S 66' E, 45 LKS. DIST. A FIR 6" DIA., BEARS S 32' W, 27 LKS. DIST. A FIR 12" DIA., BEARS N 42' E, 112 LKS. DIST. A FIR 24" DIA., BEARS N 15' W, 122 LKS. DIST.

OCTOBER 1964 DOUGLAS COUNTY SURVEYOR'S OFFICE VERNON "RAY" TRACY AND CREW (C.S. FILE 53/53-61) FOUND: ORIG. 20" NOW 40" D.FIR S 66' E, 29.7 FT, SHOWS VERY OLD BARK SCRIBE "3S R8W S" & BT SCAR ORIG. 6" NOW 30" W.FIR S 32' W, 17.8 FT, DID NOT OPEN ORIG. 12" NOW 22" D.FIR N 42' E, 73.9 FT, SHOWS GOOD SCAR, DID NOT OPEN ORIG. 24" NOW 48" D.FIR N 15' W, 80.5 FT, SHOWS FAINT BARK SCRIBE SET BRASS CAP MKD: COUNTY SURVEYORS OFFICE T30S R9W S24 S25 S19 S30 R8W 1964 NEW BT'S: A 13" D.FIR N 44' E, 10.5 FT MKD: T30S R8W S19 CSBT AN 11" W.FIR N 39' W, 32.3 FT MKD: T30S R9W S24 CSBT A 30" W.FIR S 32' W, 17.8 FT MKD: T30S R9W S25 CSBT A 9" YEW S 43' E, 30.6 FT MKD: S30 CS BT

APRIL 1980 BLM RESURVEY BY JAMES E. JELLEY AND WAYNE L. ROGERS, CADASTRAL SURVEYORS UNDER GROUP #1021 (DCSO RECORDS VOLUME 45, PAGES 17278-79) FOUND AND USED

AUGUST - NOVEMBER 1986 BLM RESURVEY BY WAYNE L. ROGERS, DALE T. BEDELL, BOYD W. PETERSON, CADASTRAL SURVEYORS UNDER GROUP #1339 (DCSO RECORDS VOLUME 48, PAGES 18355-56) THE SECTION CORNER, PERPETUATED AND RECORDED BY TRACY IN 1964, MONUMENTED WITH AN IRON POST 1-1/2" DIA., FIRMLY SET, PROJECTING 12" ABOVE GROUND, WITH BRASS CAP MARKED IN 1964 FROM WHICH THE REMAINS OF THE ORIGINAL BEARING TREES: A FIR 25" DIA., BEARS N 42' E, 110 LKS. DIST. WITH HEALED BLAZE (RECORD 112 LKS.) A FIR 42" DIA., BEARS S 66' E, 47 LKS. DIST. WITH HEALED BLAZE (RECORD 48 LKS.) A ROTHOLE BEARS S 32' W, 27 LKS. DIST. WITH DOWNED FIR 23" DIA., LYING ALONGSIDE, WITH HEALED BLAZE AND THE REMAINS OF THE BEARING TREES MKD BY TRACY: A FIR 15" DIA., BEARS N 35-1/2' E, 15-1/2 LKS. DIST. WITH HEALED DOUBLE BLAZE A YEW 10" DIA., BEARS S 42-1/2' E, 46 LKS. DIST. WITH SCRIBE MARKS S30 CS BT VISIBLE ON AN OPEN BLAZE A SAWED FIR STUMP 12" DIA., BEARS N 39-1/4' W, 49 LKS. DIST. WITH SCRIBE MARKS 30S R9W S24 VISIBLE ON A PARTIALLY HEALED BLAZE AND NEW BEARING TREES: A FIR 9" DIA., BEARS S 36' W, 104 LKS. DIST. MKD: T30S R9W S25 BT A FIR 6" DIA., BEARS N 27' W, 85-1/2 LKS. DIST. MKD: T30S R9W S24 BT

RECORD OF SURVEY

LOCATED IN A PORTION OF GOV'T LOTS 1, 2, 5, 6 AND THE NW 1/4, NE 1/4 AND SW 1/4 OF SECTION 19, T. 30 S., R. 8 W., W.M. BEETLE BATTLE SOUTH-TASK D DOUGLAS COUNTY, OREGON CONTRACT NO. 1204T020D0010 TASK ORDER NO. 140L4322F0063

FILED DATE: 11-28-2023 BY: [Signature] THIS SURVEY CONSISTS OF: MAP: M178-74 A-D NARRATIVE: CORNER RPT: DOUGLAS COUNTY SURVEYOR

203 CONT.

MAY 25, 2023 GARRETT FINCH AND CREW WITH MINISTER AND GLAESER SURVEYING FOUND A 2-1/2" COUNTY SURVEYOR'S OFFICE BRASS CAP, 0.8 FT ABOVE GROUND FROM WHICH: A 23" FIR BEARS N 35-1/2' E, 9.9 FT WITH HEALED DOUBLE BLAZE AND BT SIGN (1964) A 42" STUMP BEARS S 66' E, 31.4 FT WITH HEALED BLAZE AND ROSEBURG TIMBER AND BT SIGNS (1855) A ROTHOLE BEARS S 40' E, 30.1 FT WITH 8" TRUNK ALONGSIDE, WITH PARTIAL HEALED BLAZE (1964) A ROTHOLE BEARS S 32' W, 17.8 FT WITH 23" TRUNK ALONGSIDE (1855) A 17" FIR BEARS S 36' W, 68.7 FT WITH HEALED BLAZE AND BT SIGNS (1986) A ROTHOLE BEARS N 39-1/4' W, 33.7 FT, NO TREE REMAINS (1964) AN 11" FIR BEARS N 27' W, 56.4 FT WITH HEALED BLAZE AND BT SIGN (1986) A 52" STUMP BEARS N 15' W, 80.5 FT WITH HEALED BLAZE (1855) A 25" STUMP BEARS N 42' E, 72.6 FT WITH METAL TOP AND BT SIGN (1855) (SET CHAINING NAIL AT SIDE CENTER, BT SIGNS ON FRONT AND REAR, AND PAINTED RED BAND FOR EXISTING BT'S)

ESTABLISHED THE FOLLOWING: A 6" FIR BEARS S 44' E, 10.3 FT MKD: T30S R8W S30 BT (SET CHAINING NAIL AT SIDE CENTER, NAIL AND WASHER STAMPED "PLS 2830" AT BASE OF BLAZE, BT SIGNS ON FRONT AND BACK AND PAINTED RED BAND FOR NEW BT)

204—FOUND MONUMENT

(GCDB 120120) SW 1/16 CORNER OF SECTION 19 T. 30 S., R. 08 W., W.M.

APRIL 1980 BLM DEPENDENT RESURVEY BY JAMES E. JELLEY & WAYNE L. ROGERS, CADASTRAL SURVEYORS UNDER GROUP #1021 (DCSO RECORDS VOLUME 45, PAGE 17285) POINT FOR THE SW 1/16 SECTION CORNER OF SECTION 19, AT INTERSECTION WITH THE EAST AND WEST CENTERLINE OF THE SW 1/4 OF SECTION 19 SET AN IRON POST, 28" LONG, 2-1/2" DIA., 24" IN THE GROUND, WITH BRASS CAP MKD: SW 1/16 S19 1980 FROM WHICH: A FIR, 10" DIA., BEARS N 88' E, 7-1/2 LKS. DIST. MKD: SW 1/16 S19 BT A GRAND FIR, 15" DIA., BEARS S 55' W, 15-1/2 LKS. DIST. MKD: SW 1/16 S19 BT

MAY 23, 2023 GARRETT FINCH AND CREW WITH MINISTER AND GLAESER SURVEYING FOUND 3-1/4" BLM BRASS CAP, 0.3 FT ABOVE GROUND FROM WHICH: A 15" FIR BEARS N 88' E, 4.8 FT WITH HEALED BLAZE AND BT SIGN (1980) A 16" FIR BEARS S 60' W, 10.3 FT WITH HEALED BLAZE (1980) (SET CHAINING NAIL AT SIDE CENTER, BT SIGNS ON FRONT AND REAR, AND PAINTED RED BAND FOR EXISTING BT'S)

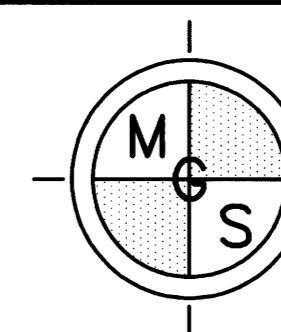
205—FOUND MONUMENT

(GCDB 120140) CENTER W 1/16 CORNER OF SECTION 19 T. 30 S., R. 08 W., W.M.

APRIL 1980 BLM DEPENDENT RESURVEY BY JAMES E. JELLEY & WAYNE L. ROGERS, CADASTRAL SURVEYORS UNDER GROUP #1021 (DCSO RECORDS VOLUME 45, PAGE 17284) POINT FOR THE CENTER W 1/16 SECTION CORNER OF SECTION 19 SET AN IRON POST, 28" LONG, 2-1/2" DIA., 22" IN THE GROUND, WITH BRASS CAP MKD: W 1/16 C--C S19 1980 FROM WHICH: A FIR, 13" DIA., BEARS N 24-1/2' W, 10-1/2 LKS. DIST. MKD: C-W 1/16 S19 BT A FIR, 13" DIA., BEARS S 7-1/2' E, 13 LKS. DIST. MKD: C-W 1/16 S19 BT

MAY 26, 2023 GARRETT FINCH AND CREW WITH MINISTER AND GLAESER SURVEYING FOUND 3-1/4" BLM BRASS CAP, 0.4 FT ABOVE GROUND FROM WHICH: A 16" FIR BEARS N 24-1/2' W, 7.9 FT, WITH HEALED BLAZE AND BT SIGN (1980) A ROTHOLE BEARS S 7-1/2' E, 8.4 F, DOWN TREE ALONGSIDE WITH HEALED BLAZE AND BT SIGN (1980) (SET CHAINING NAIL AT SIDE CENTER, BT SIGNS ON FRONT AND REAR, AND PAINTED RED BAND FOR EXISTING BT)

ESTABLISHED THE FOLLOWING: A 14" FIR BEARS S 30' W, 16.2 FT MKD: C W 1/16 S19 BT (SET CHAINING NAIL AT SIDE CENTER, NAIL AND WASHER STAMPED "PLS 2830" AT BASE OF BLAZE, BT SIGNS ON FRONT AND BACK AND PAINTED RED BAND FOR NEW BT)



MINISTER-GLAESER SURVEYING INC. 2200 E. EVERGREEN BLVD. VANCOUVER, WA 98661 (360) 694-3313

SCALE: N/A JOB NO. 22-319 DATE: 11/28/2023 CALC BY: DAR DRAWN BY: RDH CHECKED BY: DAR SHEET 3 OF 4