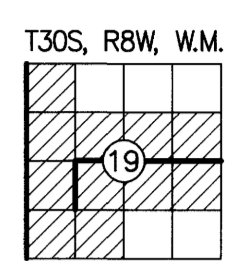


RECORD OF SURVEY

FILED
DATE: 12-5-2023 BY: *[Signature]*
THIS SURVEY CONSISTS OF:
MAP: M17B-74 A-D
NARRATIVE:
CORNER RPT:
DOUGLAS COUNTY SURVEYOR

LOCATED IN A PORTION OF
GOV'T LOTS 1, 2, 5, 6 AND
THE NW 1/4, NE 1/4 AND SW 1/4
OF SECTION 19, T. 30 S., R. 8 W., W.M.
BEETLE BATTLE SOUTH-TASK D
DOUGLAS COUNTY, OREGON
CONTRACT NO. 1204T020D0010
TASK ORDER NO. 140L4322F0063



SURVEY FOR: UNITED STATES DEPARTMENT OF THE
INTERIOR BUREAU OF LAND MANAGEMENT
ROSEBURG DISTRICT OFFICE
777 NW GARDEN VALLEY BLVD
ROSEBURG, OR 97471

SHEET INDEX

SHEET 1	VICINITY MAP, EQUIPMENT LIST, CONTROL DIAGRAM AND TABLE, CONTROL PROCEDURE, CERTIFICATES, POSTED SIGNS AND NARRATIVE
SHEET 2	SITE DETAILS, FOUND MONUMENT COORDINATE TABLE, LEGEND AND REFERENCES
SHEET 3	MONUMENT DETAILS AND CORNER HISTORY
SHEET 4	CORNER HISTORY

EQUIPMENT LIST:

- 2018 GMC SIERRA 2500HD SURVEY TRUCK
- TRIMBLE R12 GNSS BASE RECEIVER
- TRIMBLE R12i GNSS ROVER RECEIVER
- TRIMBLE S7 3" TOTAL STATION
- BRUNTON GEO TRANSIT COMPASS FOR BT'S (MAGNETIC DECLINATION=15' EAST)
- TRIMBLE TDL 450HX 35-WATT RADIO
- TRIMBLE TSC5 DATA COLLECTOR WITH TRIMBLE ACCESS SOFTWARE
- AUTODESK CIVIL 3D 2023
- TRIMBLE BUSINESS CENTER
- STAR-NET LEAST SQUARES ADJUSTMENT SOFTWARE

BASIS OF BEARING: N 27°41'56" W ALONG THE CONTROL LINE BETWEEN (MGS CONTROL POINT 50) AND (MGS CONTROL POINT 51) OREGON COORDINATE REFERENCE SYSTEM (OGRS), COTTAGE GROVE-CANYONVILLE ZONE, INTERNATIONAL FEET.

NARRATIVE:

THE PURPOSE OF THIS SURVEY WAS TO FULFILL THE CONTRACT (1204T020D0010/140L4322F0063) REQUIREMENTS FOR THE BEETLE BATTLE NORTH - TASK C CADASTRAL SURVEY AS LISTED BELOW:
- SECTION 19, T. 30 S., R. 8 W., W.M.
DOUGLAS COUNTY, OREGON

LOCATION OF PROJECT:

THIS PROJECT IS LOCATED APPROXIMATELY 26 MILES SOUTHWEST OF ROSEBURG, 3.2 MILES EAST OF HIGHWAY 42 AND TWELVE MILE CREEK RD, DOUGLAS COUNTY, OREGON.

GENERAL NOTES:

THIS CONTRACT IS FOR BOUNDARY LINE MARKING/POSTING AND BOUNDARY LINE MAINTENANCE. WE COMPLETED THE MAINTENANCE OF 8 CORNERS, AND SURVEYED AND POSTED 2 MILES OF BOUNDARY.
ALL BOUNDARY WORK COMPLIED WITH THE SURVEY SPECIFICATIONS AND PROCEDURES OUTLINED IN THE BUREAU OF LAND MANAGEMENT MANUAL OF SURVEYING INSTRUCTIONS (2009). ALL CORNERS WERE MAINTAINED TO THE SPECIFICATIONS CONTAINED IN SECTION C OF THE R6 2020 CADASTRAL SURVEY IDIQ STANDARDS. SURVEY AND LAND RECORDS RESEARCH WAS PERFORMED TO VERIFY THE CHAIN OF SURVEY AT EACH CORNER PRIOR TO MAINTAINING THE CORNERS AND MARKING AND POSTING THE BOUNDARIES. BOUNDARY DELINEATOR POSTS AND SIGNS (SEE EXAMPLE SIGNS BELOW) WERE SET ALONG THE BOUNDARY WHERE GAPS IN THE EXISTING POSTING ARE FOUND AND THE BOUNDARY LINE BLAZING WAS ADDED OR REFRESHED. SIGNS OF ENCROACHMENT AND/OR TRESPASS WERE NOT FOUND.

THE EXISTING MONUMENTS SHOWN HEREIN WERE FOUND AT ACCEPTABLE POSITIONS, WERE MONUMENTED PROPERLY AND STANDARD CORNER MAINTENANCE WAS PERFORMED.

ALL CORNER SEARCH AND EVALUATION WAS PERFORMED BY DANIEL RENTON, PLS 2830. THE PROJECT AREA IS ACCESSED BY COUNTY ROADS, PRIVATE ROADS AND OTHER FOREST ROADS.

ALL NECESSARY SIGNS AND POSTS WERE PROVIDED BY THE BUREAU OF LAND MANAGEMENT.

THE BEARINGS SHOWN HEREIN FOR BEARING TREES WERE MEASURED USING A BRUNTON GEO TRANSIT COMPASS (MAGNETIC DECLINATION=15' EAST)

THE DISTANCES AND DIAMETERS SHOWN HEREIN FOR BEARING TREES WERE MEASURED USING A STEEL LOGGERS TAPE.

TASK AND CORNERS MAINTAINED:

- SECTION 19, T. 30 S., R. 8 W., W.M.
- TIE POSITIONS, VERIFY AND MAINTAIN THE FOLLOWING CORNERS:
MONUMENT 200, CORNER N-1, (GCDB 100400) CORNER OF SECTIONS 18, 19, 13 & 24
MONUMENT 201, CORNER P-1, (GCDB 100340) 1/4 CORNER OF SECTION 19 & 24
MONUMENT 202, (GCDB 100120), SOUTH 1/16 CORNER OF SECTION 19 & 24
MONUMENT 203, CORNER N-1, (GCDB 100300) CORNER OF SECTIONS 19, 30, 24 & 25
MONUMENT 204, (GCDB 120120) SW 1/16 CORNER OF SECTION 19
MONUMENT 205, (GCDB 120140) CENTER W 1/16 CORNER OF SECTION 19
MONUMENT 206, CORNER P-3, (GCDB 140340) CENTER 1/4 CORNER OF SECTION 19
MONUMENT 207, CORNER P-5, (GCDB 200340) 1/4 CORNER OF SECTIONS 19 & 20
- SURVEY LINE, MARK AND POST BOUNDARY SHOWN HEREIN

CONTROL PROCEDURE:

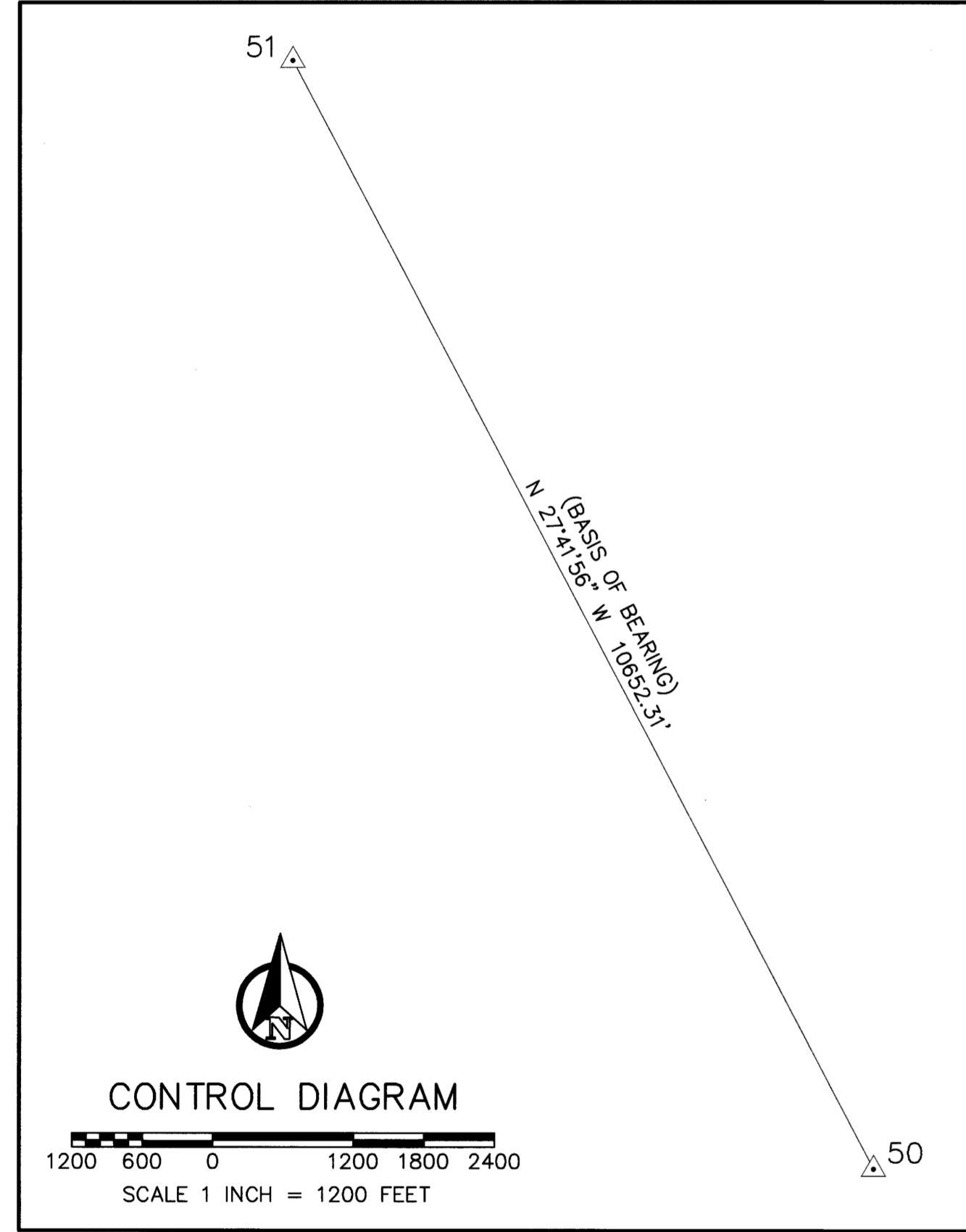
A TRIMBLE R12 GNSS BASE RECEIVER WAS USED TO COLLECT OVER 8 HOURS OF STATIC DATA ON THE PRIMARY CONTROL POINTS 50 & 51. THE STATIC DATA WAS THEN POST PROCESSED USING THE NATIONAL GEODETIC SURVEY ONLINE POSITIONING USER SERVICE (OPUS).

THE SECONDARY CONTROL WAS ESTABLISHED BY USING A TRIMBLE R12 GNSS BASE RECEIVER OPERATING IN A REAL TIME KINEMATIC (RTK) MODE AND SET ON THE PRIMARY OPUS CONTROL WHILE TRANSMITTING REAL TIME CORRECTIONS TO A TRIMBLE R12i GNSS RECEIVER ALSO OPERATING IN A REAL TIME KINEMATIC (RTK) MODE. IN AREAS OF MINIMAL TREE CANOPY, THE MONUMENTS WERE TIED DIRECTLY USING A TRIMBLE R12i GNSS ROVER WHILE RECEIVING CORRECTIONS FROM PRIMARY CONTROL POINTS. IN AREAS WHERE THE TREE CANOPY WAS TOO DENSE FOR USING A TRIMBLE R12i GNSS ROVER (RTK), A CLOSED LOOP TRAVERSE WAS RUN OFF OF THE SECONDARY CONTROL USING A TRIMBLE S7 3" TOTAL STATION. EACH CONTROL TRAVERSE WAS BALANCED USING STAR-NET LEAST SQUARES ADJUSTMENT SOFTWARE.

CONTROL POINT TABLE				
POINT NO.	NORTHING	EASTING	ELEV	DESCRIPTION
50	40130.65	68108.43	1300.24	5/8" IRON ROD W/ RPC "MGS CONTROL"
51	49562.24	63156.99	1677.77	5/8" IRON ROD W/ RPC "MGS CONTROL"

LEGEND:

- △ INDICATES MGS CONTROL POINT SET 5/8" IRON ROD W/ RPC "MGS CONTROL"
- RPC INDICATES RED PLASTIC CAP



UNITED STATES DEPARTMENT OF THE INTERIOR
BUREAU OF LAND MANAGEMENT

BOUNDARY

NO TIMBER MAY BE CUT OR REMOVED WITHOUT AUTHORIZATION

T. R. SEC. LINE IS APPROX. FT.

CORNER IS APPROX. FT.

POSTED BY DATE

BLM OFFICE IS LOCATED AT

UNITED STATES DEPARTMENT OF THE INTERIOR
BUREAU OF LAND MANAGEMENT

BEARING TREE

IT IS UNLAWFUL TO DESTROY, DEFACE, CHANGE OR REMOVE ANY CORNER OF THE PUBLIC LAND SURVEYS OR TO CUT DOWN OR DEFACE ANY BEARING TREE PERTAINING TO SUCH SURVEYS.

CORNER IS APPROXIMATELY DISTANCE DIRECTION

T. R. SEC. POSTED BY DATE

LAND SURVEY MONUMENT

PLEASE DO NOT DISTURB

THIS MONUMENT WAS LOCATED AS PART OF AN OFFICIAL LAND SURVEY. IT HELPS DEFINE LAND OWNERSHIP LINES.

FOR FURTHER INFORMATION CONTACT THE BUREAU OF LAND MANAGEMENT

11/28/2023

REGISTERED PROFESSIONAL LAND SURVEYOR

[Signature]

OREGON
JUNE 30, 1997
DANIEL A. RENTON
2830

Expires 12-31-2024

MINISTER AND GLAESER SURVEYING, INC. MAKES NO WARRANTIES AS TO MATTERS OF UNWRITTEN TITLE SUCH AS ADVERSE POSSESSION, ACQUIESCENCE, ESTOPPEL, ETC.

SCALE: 1"=1200'

JOB NO. 22-319
DATE: 11/28/2023
CALC BY: DAR
DRAWN BY: RDH
CHECKED BY: DAR
SHEET 1 OF 4

MINISTER-GLAESER SURVEYING INC.
2200 E. EVERGREEN BLVD.
VANCOUVER, WA 98661
(360) 694-3313