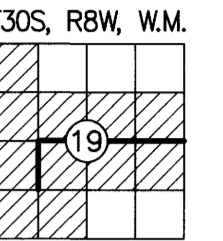


RECORD OF SURVEY

FILED
DATE: 12-5-2023 BY: *[Signature]*
THIS SURVEY CONSISTS OF:
MAP: M17B-74A-D
NARRATIVE:
CORNER RPT:
DOUGLAS COUNTY SURVEYOR

LOCATED IN A PORTION OF
GOV'T LOTS 1, 2, 5, 6 AND
THE NW 1/4, NE 1/4 AND SW 1/4
OF SECTION 19, T. 30 S., R. 8 W., W.M.
BEETLE BATTLE SOUTH-TASK D
DOUGLAS COUNTY, OREGON
CONTRACT NO. 1204T020D0010
TASK ORDER NO. 140L4322F0063



SURVEY FOR: UNITED STATES DEPARTMENT OF THE
INTERIOR BUREAU OF LAND MANAGEMENT
ROSEBURG DISTRICT OFFICE
777 NW GARDEN VALLEY BLVD
ROSEBURG, OR 97471

SHEET INDEX

SHEET 1	VICINITY MAP, EQUIPMENT LIST, CONTROL DIAGRAM AND TABLE, CONTROL PROCEDURE, CERTIFICATES, POSTED SIGNS AND NARRATIVE
SHEET 2	SITE DETAILS, FOUND MONUMENT COORDINATE TABLE, LEGEND AND REFERENCES
SHEET 3	MONUMENT DETAILS AND CORNER HISTORY
SHEET 4	CORNER HISTORY

EQUIPMENT LIST:

2018 GMC SIERRA 2500HD SURVEY TRUCK
TRIMBLE R12 GNSS BASE RECEIVER
TRIMBLE R12i GNSS ROVER RECEIVER
TRIMBLE S7 3" TOTAL STATION
BRUNTON GEO TRANSIT COMPASS FOR BT'S (MAGNETIC DECLINATION=15° EAST)
TRIMBLE TDL 450HX 35-WATT RADIO
TRIMBLE TSC5 DATA COLLECTOR WITH TRIMBLE ACCESS SOFTWARE
AUTODESK CIVIL 3D 2023
TRIMBLE BUSINESS CENTER
STAR-NET LEAST SQUARES ADJUSTMENT SOFTWARE

BASIS OF BEARING: N 27°41'56" W ALONG THE CONTROL LINE BETWEEN
(MGS CONTROL POINT 50) AND (MGS CONTROL POINT 51)
OREGON COORDINATE REFERENCE SYSTEM (OGRS), COTTAGE GROVE-CANYONVILLE
ZONE, INTERNATIONAL FEET.

NARRATIVE:

THE PURPOSE OF THIS SURVEY WAS TO FULFILL THE CONTRACT (1204T020D0010/140L4322F0063) REQUIREMENTS FOR THE BEETLE BATTLE NORTH - TASK C CADASTRAL SURVEY AS LISTED BELOW:

- SECTION 19, T. 30 S., R. 8 W., W.M.
DOUGLAS COUNTY, OREGON

LOCATION OF PROJECT:

THIS PROJECT IS LOCATED APPROXIMATELY 26 MILES SOUTHWEST OF ROSEBURG, 3.2 MILES EAST OF HIGHWAY 42 AND TWELVE MILE CREEK RD, DOUGLAS COUNTY, OREGON.

GENERAL NOTES:

THIS CONTRACT IS FOR BOUNDARY LINE MARKING/POSTING AND BOUNDARY LINE MAINTENANCE. WE COMPLETED THE MAINTENANCE OF 8 CORNERS, AND SURVEYED AND POSTED 2 MILES OF BOUNDARY.

ALL BOUNDARY WORK COMPLIED WITH THE SURVEY SPECIFICATIONS AND PROCEDURES OUTLINED IN THE BUREAU OF LAND MANAGEMENT MANUAL OF SURVEYING INSTRUCTIONS (2009). ALL CORNERS WERE MAINTAINED TO THE SPECIFICATIONS CONTAINED IN SECTION C OF THE R6 2020 CADASTRAL SURVEY IDIQ STANDARDS. SURVEY AND LAND RECORDS RESEARCH WAS PERFORMED TO VERIFY THE CHAIN OF SURVEY AT EACH CORNER PRIOR TO MAINTAINING THE CORNERS AND MARKING AND POSTING THE BOUNDARIES. BOUNDARY DELINEATOR POSTS AND SIGNS (SEE EXAMPLE SIGNS BELOW) WERE SET ALONG THE BOUNDARY WHERE GAPS IN THE EXISTING POSTING ARE FOUND AND THE BOUNDARY LINE BLAZING WAS ADDED OR REFRESHED. SIGNS OF ENCROACHMENT AND/OR TRESPASS WERE NOT FOUND.

THE EXISTING MONUMENTS SHOWN HEREIN WERE FOUND AT ACCEPTABLE POSITIONS, WERE MONUMENTED PROPERLY AND STANDARD CORNER MAINTENANCE WAS PERFORMED.

ALL CORNER SEARCH AND EVALUATION WAS PERFORMED BY DANIEL RENTON, PLS 2830. THE PROJECT AREA IS ACCESSED BY COUNTY ROADS, PRIVATE ROADS AND OTHER FOREST ROADS.

ALL NECESSARY SIGNS AND POSTS WERE PROVIDED BY THE BUREAU OF LAND MANAGEMENT.

THE BEARINGS SHOWN HEREIN FOR BEARING TREES WERE MEASURED USING A BRUNTON GEO TRANSIT COMPASS (MAGNETIC DECLINATION=15° EAST)

THE DISTANCES AND DIAMETERS SHOWN HEREIN FOR BEARING TREES WERE MEASURED USING A STEEL LOGGERS TAPE.

TASK AND CORNERS MAINTAINED:

- SECTION 19, T. 30 S., R. 8 W., W.M.
- TIE POSITIONS, VERIFY AND MAINTAIN THE FOLLOWING CORNERS:
MONUMENT 200, CORNER N-1, (GCDB 100400) CORNER OF SECTIONS 18, 19, 13 & 24
MONUMENT 201, CORNER P-1, (GCDB 100340) 1/4 CORNER OF SECTION 19 & 24
MONUMENT 202, (GCDB 100120), SOUTH 1/16 CORNER OF SECTION 19 & 24
MONUMENT 203, CORNER N-1, (GCDB 100300) CORNER OF SECTIONS 19, 30, 24 & 25
MONUMENT 204, (GCDB 120120) SW 1/16 CORNER OF SECTION 19
MONUMENT 205, (GCDB 120140) CENTER W 1/16 CORNER OF SECTION 19
MONUMENT 206, CORNER P-3, (GCDB 140340) CENTER 1/4 CORNER OF SECTION 19
MONUMENT 207, CORNER P-5, (GCDB 200340) 1/4 CORNER OF SECTIONS 19 & 20
- SURVEY LINE, MARK AND POST BOUNDARY SHOWN HEREIN

CONTROL PROCEDURE:

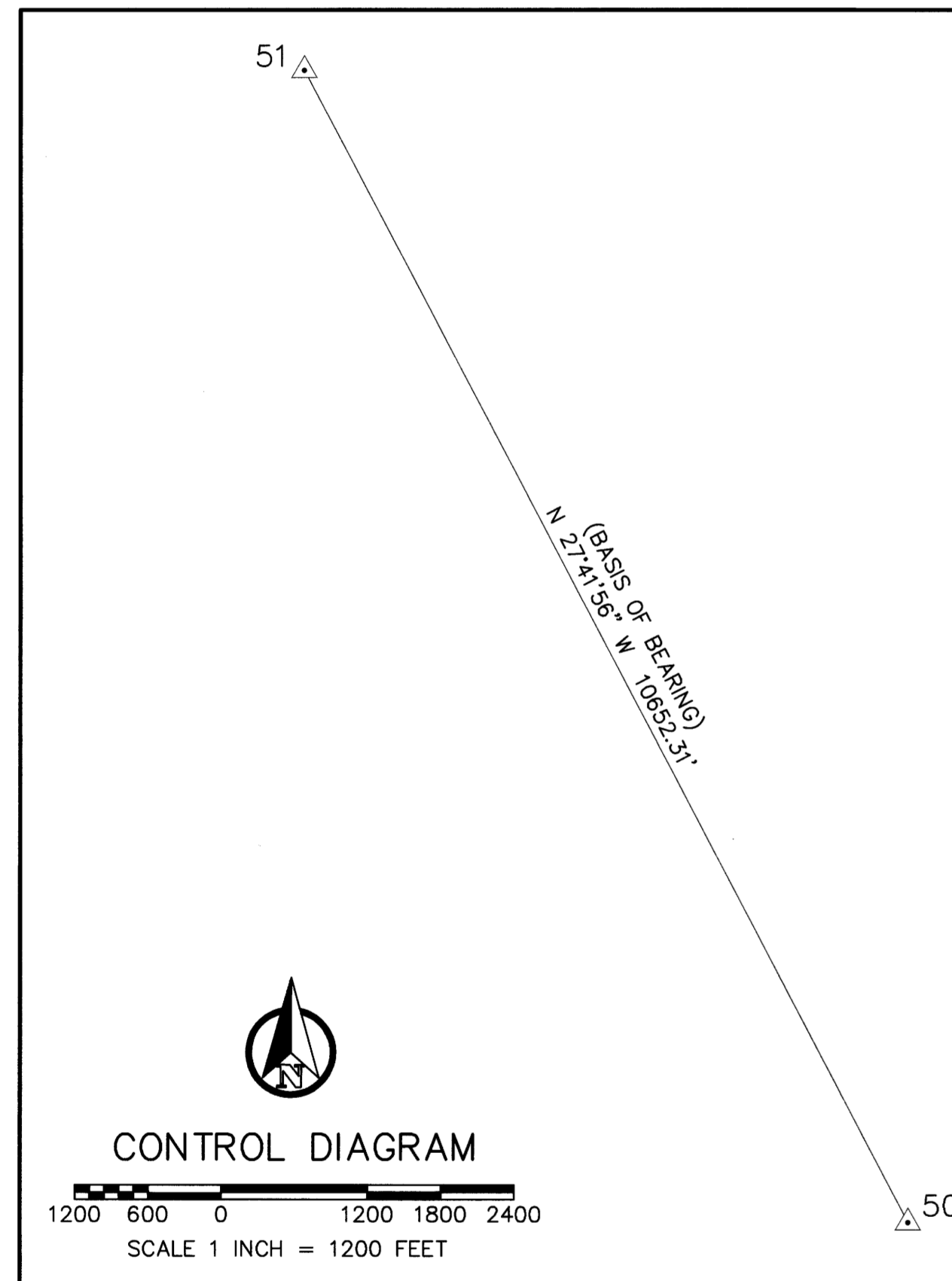
A TRIMBLE R12 GNSS BASE RECEIVER WAS USED TO COLLECT OVER 8 HOURS OF STATIC DATA ON THE PRIMARY CONTROL POINTS 50 & 51. THE STATIC DATA WAS THEN POST PROCESSED USING THE NATIONAL GEODETIC SURVEY ONLINE POSITIONING USER SERVICE (OPUS).

THE SECONDARY CONTROL WAS ESTABLISHED BY USING A TRIMBLE R12 GNSS BASE RECEIVER OPERATING IN A REAL TIME KINEMATIC (RTK) MODE AND SET ON THE PRIMARY OPUS CONTROL WHILE TRANSMITTING REAL TIME CORRECTIONS TO A TRIMBLE R12i GNSS RECEIVER ALSO OPERATING IN A REAL TIME KINEMATIC (RTK) MODE. IN AREAS OF MINIMAL TREE CANOPY, THE MONUMENTS WERE TIED DIRECTLY USING A TRIMBLE R12i GNSS ROVER WHILE RECEIVING CORRECTIONS FROM PRIMARY CONTROL POINTS. IN AREAS WHERE THE TREE CANOPY WAS TOO DENSE FOR USING A TRIMBLE R12i GNSS ROVER (RTK), A CLOSED LOOP TRAVERSE WAS RUN OFF OF THE SECONDARY CONTROL USING A TRIMBLE S7 3" TOTAL STATION. EACH CONTROL TRAVERSE WAS BALANCED USING STAR-NET LEAST SQUARES ADJUSTMENT SOFTWARE.

CONTROL POINT TABLE				
POINT NO.	NORTHING	EASTING	ELEV	DESCRIPTION
50	40130.65	68108.43	1300.24	5/8" IRON ROD W/ RPC "MGS CONTROL"
51	49562.24	63156.99	1677.77	5/8" IRON ROD W/ RPC "MGS CONTROL"

LEGEND:

- △ INDICATES MGS CONTROL POINT
SET 5/8" IRON ROD W/ RPC "MGS CONTROL"
- RPC INDICATES RED PLASTIC CAP



UNITED STATES
DEPARTMENT OF THE INTERIOR
BUREAU OF LAND MANAGEMENT

BOUNDARY

NO TIMBER MAY BE CUT OR REMOVED
WITHOUT AUTHORIZATION

T. R. SEC. LINE IS APPROX. FT.

CORNER IS APPROX. FT.

POSTED BY DATE

BLM OFFICE IS LOCATED AT

UNITED STATES DEPARTMENT OF THE INTERIOR
BUREAU OF LAND MANAGEMENT

BEARING TREE

IT IS UNLAWFUL TO DESTROY, DEFACE, CHANGE OR REMOVE
ANY CORNER OF THE PUBLIC LAND SURVEYS OR TO CUT DOWN
OR DEFACE ANY BEARING TREE PERTAINING TO SUCH SURVEYS.

CORNER IS APPROXIMATELY DISTANCE DIRECTION

T. R. SEC. POSTED BY DATE

**LAND SURVEY
MONUMENT**

**PLEASE
DO NOT DISTURB**

THIS MONUMENT WAS LOCATED
AS PART OF AN OFFICIAL LAND
SURVEY. IT HELPS DEFINE LAND
OWNERSHIP LINES.

FOR FURTHER INFORMATION
CONTACT THE
BUREAU OF LAND MANAGEMENT

11/28/2023

REGISTERED
PROFESSIONAL
LAND SURVEYOR

[Signature]

OREGON
JUNE 30, 1997
DANIEL A. RENTON
2830

Expires 12-31-2024

MINISTER AND GLAESER SURVEYING, INC. MAKES NO WARRANTIES AS TO MATTERS OF UNWRITTEN TITLE SUCH AS ADVERSE POSSESSION, ACQUIESCENCE, ESTOPPEL, ETC.

SCALE: 1"=1200'

JOB NO. 22-319
DATE: 11/28/2023
CALC BY: DAR
DRAWN BY: RDH
CHECKED BY: DAR
SHEET 1 OF 4

MINISTER-GLAESER
SURVEYING INC.
2200 E. EVERGREEN BLVD.
VANCOUVER, WA 98661
(360) 694-3313

RECORD OF SURVEY

LOCATED IN A PORTION OF
 GOV'T LOTS 1, 2, 5, 6 AND
 THE NW 1/4, NE 1/4 AND SW 1/4
 OF SECTION 19, T. 30 S., R. 8 W., W.M.
 BEETLE BATTLE SOUTH-TASK D
 DOUGLAS COUNTY, OREGON
 CONTRACT NO. 1204T020D0010
 TASK ORDER NO. 140L4322F0063

FILED
 DATE: 12-5-2023 BY: *DAR*
 THIS SURVEY CONSISTS OF:
 MAP: M178-74A-D
 NARRATIVE:
 CORNER RPT:
 DOUGLAS COUNTY
 SURVEYOR

FOUND MONUMENT TABLE			
POINT NO.	NORTHING	EASTING	DESCRIPTION
200	43765.90	65286.33	2-1/2" BRASS CAP
201	41121.54	65279.25	3-1/4" BRASS CAP
202	39799.84	65275.87	3-1/4" BRASS CAP
203	38477.86	65272.47	2-1/2" BRASS CAP
204	39826.41	66897.46	3-1/4" BRASS CAP
205	41146.04	66892.96	3-1/4" BRASS CAP
206	41165.01	68045.71	3-1/4" BRASS CAP
207	41204.67	70666.02	3-1/4" BRASS CAP

LEGEND:

- INDICATES MONUMENT FOUND AS NOTED IN TABLES, SHEETS 3 & 4
- △ INDICATES MGS CONTROL POINT
SET 5/8" IRON ROD W/ RPC "MGS CONTROL"
- (BLM#) INDICATES RECORD DATA PER BUREAU OF
LAND MANAGEMENT REFERENCE NUMBER
- T. INDICATES TOWNSHIP
- R. INDICATES RANGE
- SEC. INDICATES SECTION
- BT INDICATES BEARING TREE
- CH INDICATES CHAINS (1 CHAIN=66 FEET)
- LKS INDICATES LINKS (1 LINK=0.66 FEET)
- W/ INDICATES WITH
- CONT. INDICATES CONTINUED
- RPC INDICATES RED PLASTIC CAP
- INDICATES BOUNDARY LINE, MARKED AND POSTED
- INDICATES SECTION SUBDIVISION
- CRK--- INDICATES CENTERLINE OF CREEK
- INDICATES CENTERLINE OF ROAD

PLSS CORNERS



GLO REFERENCE:

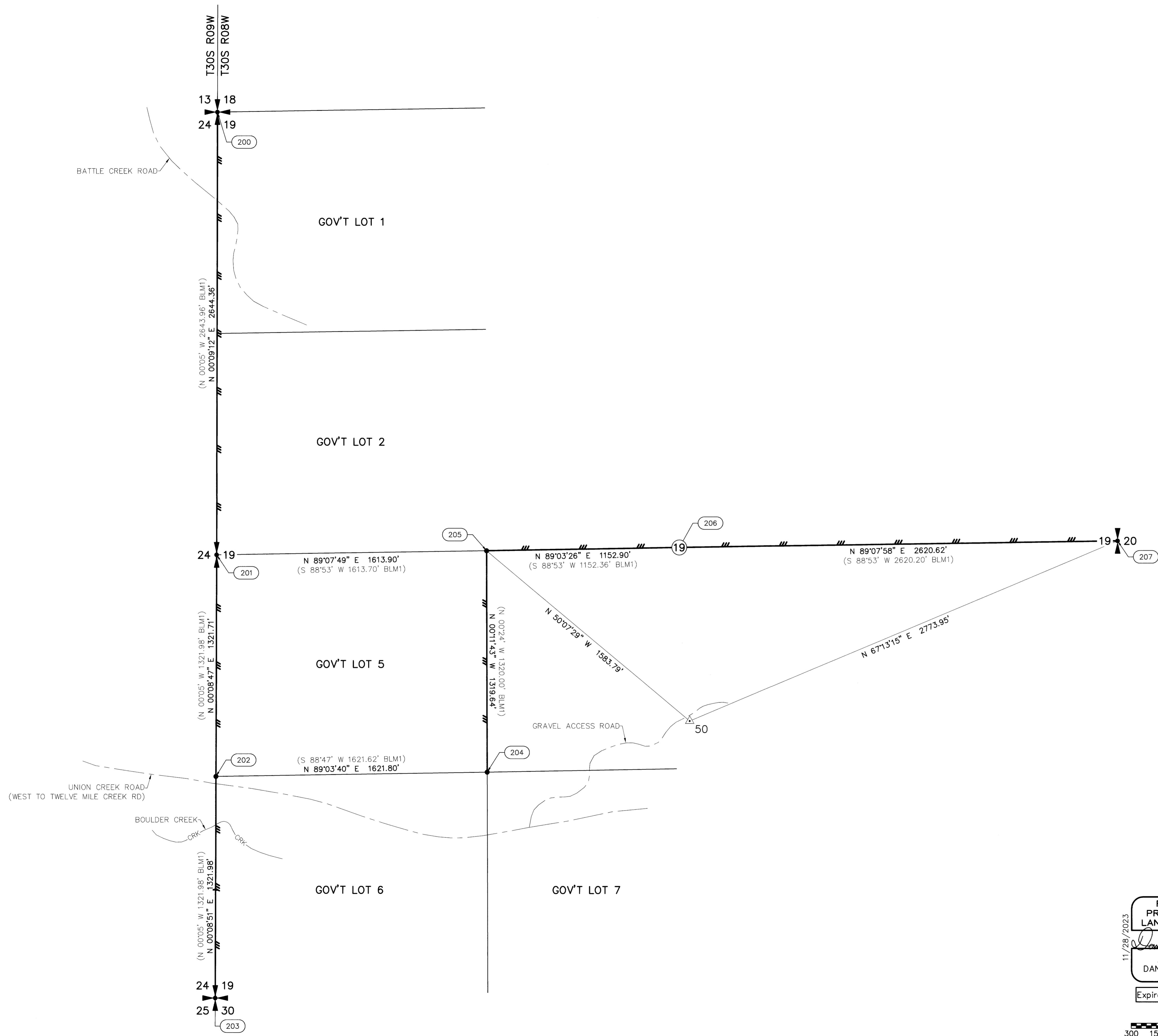
- 1) (1882) GENERAL LAND OFFICE SURVEY AND NOTES
FOR SECTIONS 4 & 5, T. 30 S., R. 8 W., W.M.
EXECUTED BY WILLIAM H. BYERS UNDER CONTRACT NO. 456
SURVEYED OCTOBER 1882
SURVEY DATED JULY 28, 1883 (1126)

BLM REFERENCES:

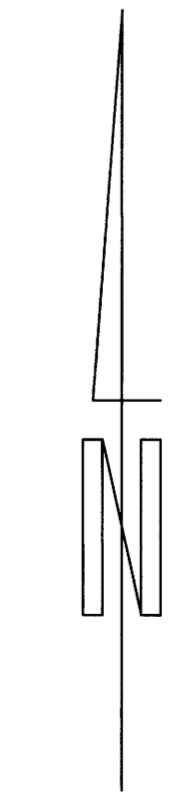
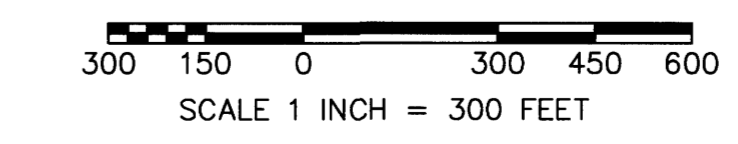
- 1) (1980) BUREAU OF LAND MANAGEMENT RESURVEY AND NOTES
FOR SUBDIVISION OF SECTION 19, T. 30 S., R. 8 W., W.M.
EXECUTED BY JAMES E. JELLEY & WAYNE L. ROGERS
APRIL 1980
DEPENDENT RESURVEY DATED MAY 11, 1984 (5955)
- 2) (2014) BUREAU OF LAND MANAGEMENT RESURVEY AND NOTES
FOR SUBDIVISION OF SECTION 19, T. 30 S., R. 8 W., W.M.
EXECUTED BY GEORGE M. WINTER
APRIL 2013 - FEBRUARY 2014
DEPENDENT RESURVEY DATED NOVEMBER 7, 2014 (7846)
- 3) (2021) BUREAU OF LAND MANAGEMENT RESURVEY AND NOTES
FOR SUBDIVISION OF SECTION 19, T. 30 S., R. 8 W., W.M.
EXECUTED BY JEFFREY O. COVINGTON
MAY 2020 - FEBRUARY 2021
DEPENDENT RESURVEY DATED OCTOBER 19, 2021 (8189)

SURVEY REFERENCES:

- 1) (1973) BRUCE A. SHANER, M49-16
- 2) (1973) BRUCE A. SHANER, M49-25

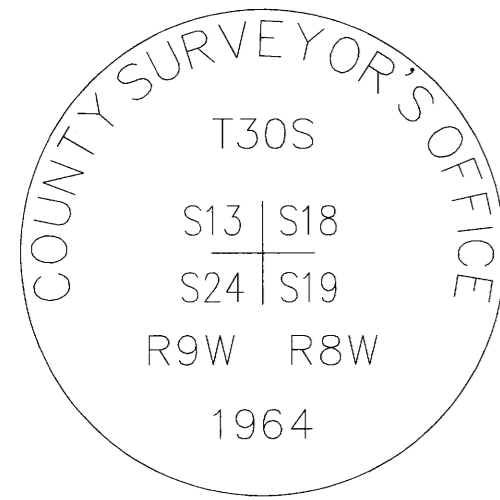


11/28/2023
 REGISTERED
 PROFESSIONAL
 LAND SURVEYOR
Daniel A. Renton
 OREGON
 JUNE 30, 1997
 DANIEL A. RENTON
 2830
 Expires 12-31-2024

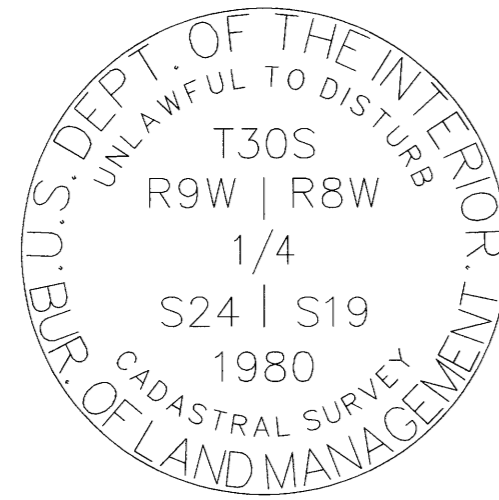


**MINISTER-GLAESER
SURVEYING INC.**
 2200 E. EVERGREEN BLVD.
 VANCOUVER, WA 98661
 (360) 694-3313

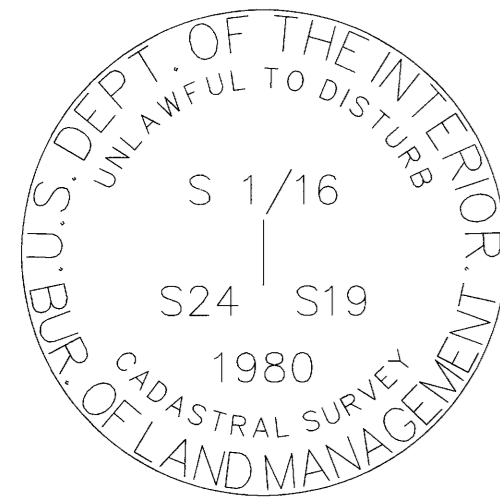
SCALE: 1"=300'
 JOB NO. 22-319
 DATE: 11/28/2023
 CALC BY: DAR
 DRAWN BY: RDH
 CHECKED BY: DAR
 SHEET 2 OF 4



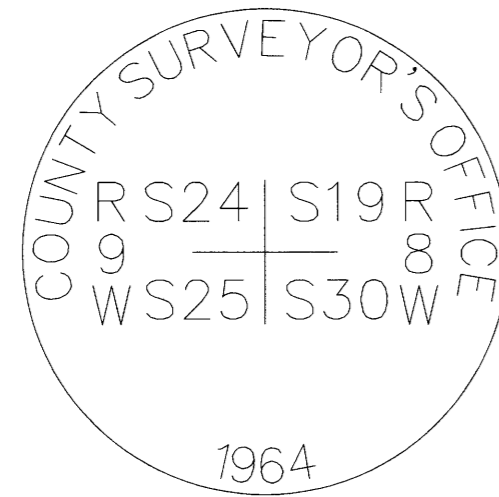
POINT NUMBER: 200



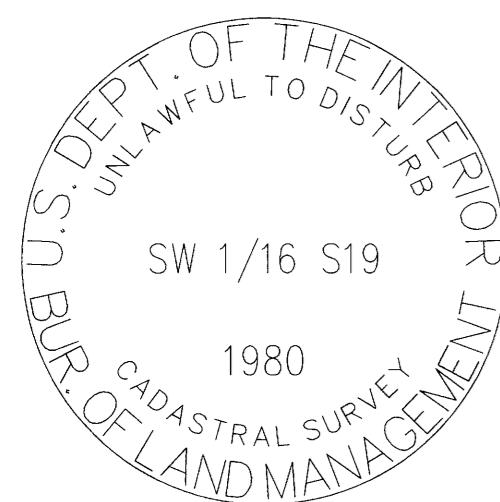
POINT NUMBER: 201



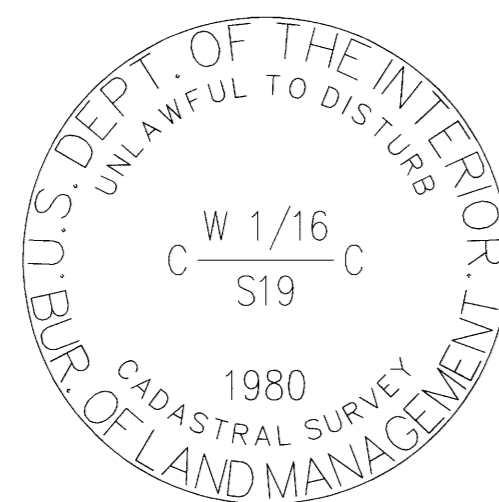
POINT NUMBER: 202



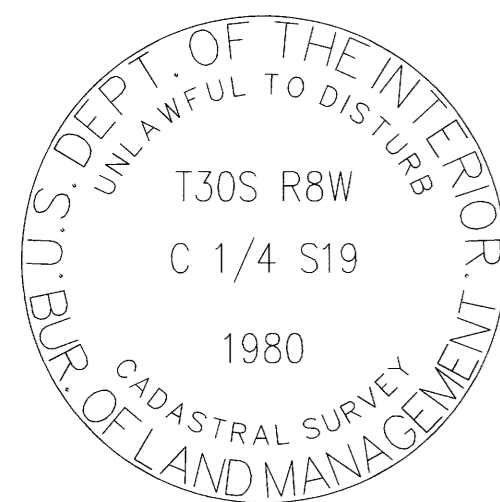
POINT NUMBER: 203



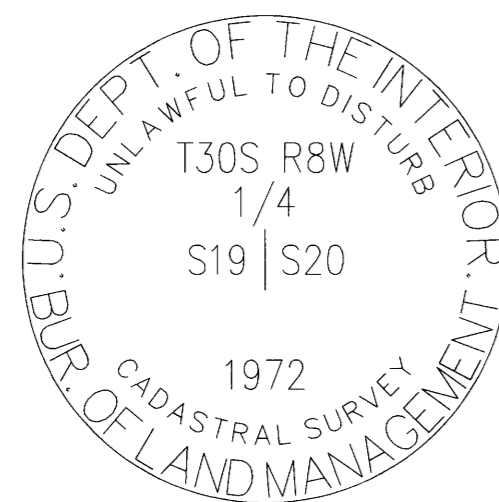
POINT NUMBER: 204



POINT NUMBER: 205



POINT NUMBER: 206



POINT NUMBER: 207

200-FOUND MONUMENT

CORNER N-1, (GCDB 100400) CORNER OF SECTIONS 18 & 19 T. 30 S., R. 08 W., W.M. AND SECTIONS 13 & 24 T. 30 S., R. 09 W., W.M.

APRIL 12, 1855 GLO SURVEY BY DENNIS HATHORN, DEPUTY SURVEYOR UNDER CONTRACT #57 (DCSO RECORDS VOLUME 17, PAGES 7370-71) MARKED A LAUREL, CORNER OF SECTIONS 13, 24, 18 AND 19, FROM WHICH: A FIR 15" DIA., BEARS N 35' E, 60 LKS. DIST. A FIR 24" DIA., BEARS S 26' E, 154 LKS. DIST. A CHINQUAPIN 5" DIA., BEARS S 45' W, 32 LKS. DIST. A LAUREL 5" DIA., BEARS N 70' W, 35 LKS. DIST.

OCTOBER - NOVEMBER 1882 GLO SURVEY BY WILLIAM H. BYARS UNDER CONTRACT #456 INTERSECT WEST BOUNDARY OF THE TOWNSHIP, 58 LKS. NORTH OF THE CORNER TO SECTIONS 13, 18, 19 & 24, WHICH IS A POST 5" SQUARE FIRMLY SET IN THE GROUND MARKED: T30S R9W S18 ON NE, S19 ON SE, R9W S24 ON SW AND S13 ON NW FACES, WITH 3 NOTCHES ON N & S EDGES FROM WHICH: A FIR 15" DIA., BEARS N 35' E, 60 LKS. DIST. MKD: T30S R9W S18 BT A FIR 24" DIA., BEARS S 26' E, 154 LKS. DIST. MKD: T30S R9W S19 BT A CHINQUAPIN 5" DIA., BEARS S 45' W, 42 LKS. DIST. MKD: T30S R9W S24 BT A LAUREL 5" DIA., BEARS N 70' W, 35 LKS. DIST. MKD: T30S R9W S13 BT

AUGUST 1964 DOUGLAS COUNTY SURVEYOR'S OFFICE VERNON "RAY" TRACY AND CREW (C.S. FILE 53/53-55) FOUND SQUARED POST FROM WHICH: A 15" NOW 34" D. FIR BEARS N 35' E, 39.6 FT, FAINT BARK SCRIBE "BT" AND OTHER NOT LEGIBLE A 24" D. FIR NOW DOWN AND ROTTED, BEARS S 26' E, 101.6 FT, FOUND PART OF OLD FACE AND AXE MARKS IN ROTTEN REMNANTS NO TRACE OF LAUREL OR CHINQUAPIN IN SW OR NW SET 1" IRON PIPE AND BRASS CAP MKD: COUNTY SURVEYOR'S OFFICE 1964 R9W S13 S24 S18 S19 R8W NEW BT'S: AN 8" D. FIR BEARS N 87' E, 8.8 FT MKD: T30S R9W S18 CS BT AN 8" D. FIR BEARS N 43' W, 10.0 FT MKD: T30S R9W S13 CS BT AN 8" D. FIR BEARS S 52' W, 12.4 FT MKD: T30S R9W S24 CS BT A 13" D. FIR BEARS S 19' E, 26.7 FT MKD: T30S R9W S19 CS BT

MARCH 1973 BRUCE A. SHANER FOR MOORE MILL AND LUMBER CO. (MAP FILE M49-16) FOUND BRASS CAP SET BY COUNTY SURVEYOR IN 1964 FROM WHICH: A 34" ORIGINAL DOUGLAS FIR BEARS N 35' E, 39.6' POSSIBLE BARK SCRIBE A 10" DOUGLAS FIR BEARS N 87' E, 8.8" A 10" DOUGLAS FIR BEARS N 43' W, 10.0" AN 8" DOUGLAS FIR BEARS S 52' W, 12.4" A 13" DOUGLAS FIR BEARS S 19' E, 26.7"

APRIL 1980 BLM RESURVEY BY JAMES E. JELLEY AND WAYNE L. ROGERS, CADASTRAL SURVEYORS UNDER GROUP #1021 (DCSO RECORDS VOLUME 45, PAGE 17280) FOUND AND USED

JULY - AUGUST 2002 BLM RESURVEY BY A. BERT SKEESICK, CADASTRAL SURVEYOR UNDER GROUP #2009 (DCSO RECORDS VOLUME 54, PAGES 21064-5) BEGINNING AT THE CORNER OF SECTIONS 13, 18, 19 AND 24 ON THE EAST BOUNDARY OF THE TOWNSHIP, MONUMENTED WITH AN IRON POST, 1-1/2" DIA., FIRMLY SET, PROJECTING 13" ABOVE GROUND, WITH BRASS CAP MKD FROM WHICH THE REMAINS OF THE ORIGINAL BEARING TREES: A DECAYED STUMP, 30" DIA., SPECIES INDETERMINATE, BEARS N 35' E, 38.2 FT, WITH NO MARKS VISIBLE (RECORD, FIR, 39.6 FT) AND REMAINS OF BEARING TREES MKD BY TRACY IN 1964 AND REPORTED BY JELLEY AND ROGERS: A FIR, 17" DIA., BEARS N 85' E, 8.6 FT, WITH HEALED DOUBLE BLAZE A ROTHOLE BEARS S 20' E, 26.4 FT, WITH FALLEN TRUNK, 16" DIA, SPECIES INDETERMINATE, LYING ALONGSIDE AND HEALED BLAZE (RECORD, FIR) A ROTHOLE BEARS S 55' W, 12.5 FT, WITH FALLEN TRUNK, 8" DIA. SPECIES INDETERMINATE, LYING ALONGSIDE AND HEALED BLAZE (RECORD, FIR) A ROTHOLE BEARS N 41-3/4' W, 9.9 FT, WITH FALLEN TRUNK, 13" DIA, SPECIES INDETERMINATE, LYING ALONGSIDE AND HEALED BLAZE (RECORD, FIR) AND NEW BEARING TREES: A FIR, 13" DIA., BEARS N 62-1/2' E, 44.8 FT, MKD: T30S R8W S18 BT A FIR, 8" DIA., BEARS S 53-3/4', 27.2 FT, MKD: X BT A FIR, 10" DIA., BEARS N 59-1/2' W, 49.4 FT, MKD: T30S R9W S13 BT EACH NEW BEARING TREE HAS A 2-1/2" X 1/4" MAGNETIC NAIL (MAG NAIL) DRIVEN AT THE BASE RIGHT SIDE-CENTER, UNLESS OTHERWISE DESCRIBED IN THE CORNER DESCRIPTION

APRIL 2013 - FEBRUARY 2014 BLM RESURVEY BY GEORGE M. WINTER, CADASTRAL SURVEYOR UNDER GROUP #2698 (DCSO RECORDS VOLUME 58, PAGES 23158-9) THE CORNER OF SECTIONS 13, 18, 19, AND 24 ON THE WEST BOUNDARY OF THE TOWNSHIP, MONUMENTED WITH AN IRON POST, 1-1/2" DIA., FIRMLY SET, PROJECTING 13" ABOVE GROUND, WITH BRASS CAP (PROPERLY) MKD FROM WHICH THE REMAINS OF THE ORIGINAL BEARING TREES: A DECAYED FIR STUMP, 52" DIA., BEARS N 35' E, 38.2 FT, WITH HEALED BLAZE AND THE REMAINS OF BEARING TREES MKD BY THE DOUGLAS COUNTY SURVEYOR'S OFFICE IN 1964: A FIR, 20" DIA., BEARS N 85' E, 8.6 FT, WITH HEALED DOUBLE BLAZE A ROTHOLE BEARS S 20' E, 26.4 FT, WITH DECAYED TRUNK LAYING ALONGSIDE, 14" DIA., WITH HEALED BLAZE A ROTHOLE BEARS S 55' W, 12.5 FT, WITH DECAYED TRUNK LAYING ALONGSIDE, 8" DIA., NO MARKS A ROTHOLE BEARS N 41-3/4' W, 9.9 FT, WITH FIR TRUNK LAYING ALONGSIDE, 12" DIA., WITH FRAGMENTARY SCRIBE MARKS VISIBLE AND BEARING TREES MKD BY SKEESICK IN 2002: A FIR, 16" DIA., BEARS N 62-1/2' E, 44.8 FT, WITH HEALED BLAZE A FIR, 9" DIA., BEARS S 53-3/4' W, 27.2 FT, WITH HEALED DOUBLE BLAZE A FIR, 13" DIA., BEARS N 59-1/2' W, 49.4 FT, WITH HEALED BLAZE

MAY 24, 2023 GARRETT FINCH AND CREW WITH MINISTER AND GLAESER SURVEYING FOUND 2-1/2" COUNTY SURVEYOR'S OFFICE BRASS CAP, 0.9 FT ABOVE GROUND FROM WHICH: A 22" FIR BEARS N 85' E, 8.6 FT, WITH HEALED DOUBLE BLAZE AND BT SIGNS (1964) A 19" FIR BEARS N 62-1/2' E, 45.1 FT, WITH HEALED BLAZE AND BT SIGNS (2002) A 16" FIR BEARS N 59-1/2' W, 49.6 FT, WITH HEALED BLAZE AND BT SIGN (2002) A 12" FIR BEARS S 53-3/4' W, 27.2 FT, WITH HEALED DOUBLE BLAZE AND BT SIGNS (2002) A ROTHOLE BEARS N 41-3/4' W, 9.9 FT, 8" TRUNK LYING ALONGSIDE, INDETERMINATE SPECIES (1964) A 59" STUMP BEARS N 35' E, 38.2 FT, NO REMAINING EVIDENCE (1855) A ROTHOLE BEARS S 20' E, 26.4 FT, 14" TRUNK LYING ALONGSIDE, INDETERMINATE SPECIES (1964) A ROTHOLE BEARS S 55' W, 12.5 FT, 6" TRUNK LYING ALONGSIDE, INDETERMINATE SPECIES (1964) (SET CHAINING NAIL AT SIDE CENTER, BT SIGNS ON FRONT AND REAR, AND PAINTED RED BAND FOR EXISTING BT'S)

201-FOUND MONUMENT

CORNER P-1, (GCDB 100340) 1/4 CORNER OF SECTION 19 T. 30 S., R. 08 W., W.M. AND SECTION 24 T. 30 S., R. 09 W., W.M.

APRIL 12, 1855 GLO SURVEY BY DENNIS HATHORN, DEPUTY SURVEYOR UNDER CONTRACT #57 (DCSO RECORDS VOLUME 17, PAGE 7371) SET 1/4 SECTION POST FROM WHICH: A W. OAK 12" DIA., BEARS N 50' W, 94 LKS. DIST. A W. OAK 12" DIA., BEARS S 02' E, 171 LKS. DIST.

APRIL 1980 BLM RESURVEY BY JAMES E. JELLEY AND WAYNE L. ROGERS, CADASTRAL SURVEYORS UNDER GROUP #1021 (DCSO RECORDS VOLUME 45, PAGE 17280) POINT FOR THE 1/4 SECTION CORNER, AT PROPORTIONATE DISTANCE; THERE IS NO REMAINING EVIDENCE OF THE ORIGINAL CORNER. SET AN IRON POST, 28" LONG, 2-1/2" DIA., 24" IN THE GROUND, WITH BRASS CAP MKD: T30S R9W R8W 1/4 S24 S19 1980 FROM WHICH: A FIR 13" DIA., BEARS S 28' E, 7-1/2 LKS. DIST. MKD: 1/4 S19 BT A FIR 13" DIA., BEARS N 56-1/2' W, 24 LKS. DIST. MKD: 1/4 S24 BT

MAY 24, 2023 GARRETT FINCH AND CREW WITH MINISTER AND GLAESER SURVEYING FOUND 3-1/4" BLM BRASS CAP, 0.3 FT ABOVE GROUND FROM WHICH: A 15" FIR, DEAD, BEARS S 28' E, 5.4 FT, WITH HEALED DOUBLE BLAZE AND BT SIGN (1980) A ROTHOLE BEARS N 56-1/2' W, 15.9 FT, TRUNK ALONGSIDE MKD: 1/4 S24 BT (1980) (SET CHAINING NAIL AT SIDE CENTER, BT SIGNS ON FRONT AND REAR, AND PAINTED RED BAND FOR EXISTING BT'S)

ESTABLISHED THE FOLLOWING: A 12" FIR BEARS N 80' W, 10.1 FT MKD: 1/4 S24 BT A 10" OAK BEARS N 22' E, 11.0 FT MKD: 1/4 S19 BT (SET CHAINING NAIL AT SIDE CENTER, NAIL AND WASHER STAMPED "PLS 2830" AT BASE OF BLAZE, BT SIGNS ON FRONT AND BACK AND PAINTED RED BAND FOR NEW BT'S)

202-FOUND MONUMENT

(GCDB 100120) SOUTH 1/16 CORNER OF SECTION 19 T. 30 S., R. 08 W., W.M. AND SECTION 24 T. 30 S., R. 09 W., W.M.

APRIL 1980 BLM DEPENDENT RESURVEY BY JAMES E. JELLEY & WAYNE L. ROGERS, CADASTRAL SURVEYORS UNDER GROUP #1021 (DCSO RECORDS VOLUME 45, PAGE 17279) POINT FOR THE S/16 SECTION CORNER OF SECTION 19 & 24 SET AN IRON POST, 28" LONG, 2-1/2" DIA., 24" IN THE GROUND, WITH BRASS CAP MKD: S 1/16 S24 S19 1980 FROM WHICH: A FIR, 8" DIA., BEARS N 49' E, 67 LKS. DIST. MKD: S 1/16 S19 BT A FIR, 12" DIA., BEARS N 76-1/2' W, 21 LKS. DIST. MKD: S 1/16 S24 BT

MAY 24, 2023 GARRETT FINCH AND CREW WITH MINISTER AND GLAESER SURVEYING FOUND 3-1/4" BLM BRASS CAP, 0.3 FT ABOVE GROUND FROM WHICH: A 23" FIR BEARS N 76-1/2' W, 14.2 FT, WITH HEALED BLAZE (1980) A 25" FIR BEARS N 49' E, 44.6 FT, WITH HEALED BLAZE AND BT SIGN (1980) (SET CHAINING NAIL AT SIDE CENTER, BT SIGNS ON FRONT AND REAR, AND PAINTED RED BAND FOR EXISTING BT'S)

203-FOUND MONUMENT

CORNER N-1, (GCDB 100300) CORNER OF SECTIONS 19 & 30 T. 30 S., R. 08 W., W.M. AND SECTION 24 & 25 T. 30 S., R. 09 W., W.M.

APRIL 12, 1855 GLO SURVEY BY DENNIS HATHORN, DEPUTY SURVEYOR UNDER CONTRACT #57 (DCSO RECORDS VOLUME 17, PAGE 7371) SET POST, CORNER OF SECTIONS 24, 25, 19 AND 30 FROM WHICH: A FIR 20" DIA., BEARS S 66' E, 45 LKS. DIST. A FIR 6" DIA., BEARS S 32' W, 27 LKS. DIST. A FIR 12" DIA., BEARS N 42' E, 112 LKS. DIST. A FIR 24" DIA., BEARS N 15' W, 122 LKS. DIST.

OCTOBER 1964 DOUGLAS COUNTY SURVEYOR'S OFFICE VERNON "RAY" TRACY AND CREW (C.S. FILE 53/53-61) FOUND: ORIG. 20" NOW 40" D.FIR S 66' E, 29.7 FT, SHOWS VERY OLD BARK SCRIBE "3S R8W S" & BT SCAR ORIG. 6" NOW 30" W.FIR S 32' W, 17.8 FT, DID NOT OPEN ORIG. 12" NOW 22" D.FIR N 42' E, 73.9 FT, SHOWS GOOD SCAR, DID NOT OPEN ORIG. 24" NOW 48" D.FIR N 15' W, 80.5 FT, SHOWS FAINT BARK SCRIBE SET BRASS CAP MKD: COUNTY SURVEYORS OFFICE T30S R9W S24 S25 S19 S30 R8W 1964 NEW BT'S: A 13" D.FIR N 44' E, 10.5 FT MKD: T30S R8W S19 CSBT AN 11" W.FIR N 39' W, 32.3 FT MKD: T30S R9W S24 CSBT A 30" W.FIR S 32' W, 17.8 FT MKD: T30S R9W S25 CSBT A 9" YEW S 43' E, 30.6 FT MKD: S30 CS BT

APRIL 1980 BLM RESURVEY BY JAMES E. JELLEY AND WAYNE L. ROGERS, CADASTRAL SURVEYORS UNDER GROUP #1021 (DCSO RECORDS VOLUME 45, PAGES 17278-79) FOUND AND USED

AUGUST - NOVEMBER 1986 BLM RESURVEY BY WAYNE L. ROGERS, DALE T. BEDELL, BOYD W. PETERSON, CADASTRAL SURVEYORS UNDER GROUP #1339 (DCSO RECORDS VOLUME 48, PAGES 18355-56) THE SECTION CORNER, PERPETUATED AND RECORDED BY TRACY IN 1964, MONUMENTED WITH AN IRON POST 1-1/2" DIA., FIRMLY SET, PROJECTING 12" ABOVE GROUND, WITH BRASS CAP MARKED IN 1964 FROM WHICH THE REMAINS OF THE ORIGINAL BEARING TREES: A FIR 25" DIA., BEARS N 42' E, 110 LKS. DIST. WITH HEALED BLAZE (RECORD 112 LKS.) A FIR 42" DIA., BEARS S 66' E, 47 LKS. DIST. WITH HEALED BLAZE (RECORD 48 LKS.) A ROTHOLE BEARS S 32' W, 27 LKS. DIST. WITH DOWNED FIR 23" DIA., LYING ALONGSIDE, WITH HEALED BLAZE AND THE REMAINS OF THE BEARING TREES MKD BY TRACY: A FIR 15" DIA., BEARS N 35-1/2' E, 15-1/2 LKS. DIST. WITH HEALED DOUBLE BLAZE A YEW 10" DIA., BEARS S 42-1/2' E, 46 LKS. DIST. WITH SCRIBE MARKS S30 CS BT VISIBLE ON AN OPEN BLAZE A SAWED FIR STUMP 12" DIA., BEARS N 39-1/4' W, 49 LKS. DIST. WITH SCRIBE MARKS 30S R9W S24 VISIBLE ON A PARTIALLY HEALED BLAZE AND NEW BEARING TREES: A FIR 9" DIA., BEARS S 36' W, 104 LKS. DIST. MKD: T30S R9W S25 BT A FIR 6" DIA., BEARS N 27' W, 85-1/2 LKS. DIST. MKD: T30S R9W S24 BT

RECORD OF SURVEY

LOCATED IN A PORTION OF GOV'T LOTS 1, 2, 5, 6 AND THE NW 1/4, NE 1/4 AND SW 1/4 OF SECTION 19, T. 30 S., R. 8 W., W.M. BEETLE BATTLE SOUTH-TASK D DOUGLAS COUNTY, OREGON CONTRACT NO. 1204T020D0010 TASK ORDER NO. 140L4322F0063

FILED DATE: 11-28-2023 BY: [Signature] THIS SURVEY CONSISTS OF: MAP: M17B-74A-D NARRATIVE: CORNER RPT: DOUGLAS COUNTY SURVEYOR

203 CONT.

MAY 25, 2023 GARRETT FINCH AND CREW WITH MINISTER AND GLAESER SURVEYING FOUND A 2-1/2" COUNTY SURVEYOR'S OFFICE BRASS CAP, 0.8 FT ABOVE GROUND FROM WHICH: A 23" FIR BEARS N 35-1/2' E, 9.9 FT WITH HEALED DOUBLE BLAZE AND BT SIGN (1964) A 42" STUMP BEARS S 66' E, 31.4 FT WITH HEALED BLAZE AND ROSEBURG TIMBER AND BT SIGNS (1855) A ROTHOLE BEARS S 40' E, 30.1 FT WITH 8" TRUNK ALONGSIDE, WITH PARTIAL HEALED BLAZE (1964) A ROTHOLE BEARS S 32' W, 17.8 FT WITH 23" TRUNK ALONGSIDE (1855) A 17" FIR BEARS S 36' W, 68.7 FT WITH HEALED BLAZE AND BT SIGNS (1986) A ROTHOLE BEARS N 39-1/4' W, 33.7 FT, NO TREE REMAINS (1964) AN 11" FIR BEARS N 27' W, 56.4 FT WITH HEALED BLAZE AND BT SIGN (1986) A 52" STUMP BEARS N 15' W, 80.5 FT WITH HEALED BLAZE (1855) A 25" STUMP BEARS N 42' E, 72.6 FT WITH METAL TOP AND BT SIGN (1855) (SET CHAINING NAIL AT SIDE CENTER, BT SIGNS ON FRONT AND REAR, AND PAINTED RED BAND FOR EXISTING BT'S)

ESTABLISHED THE FOLLOWING: A 6" FIR BEARS S 44' E, 10.3 FT MKD: T30S R8W S30 BT (SET CHAINING NAIL AT SIDE CENTER, NAIL AND WASHER STAMPED "PLS 2830" AT BASE OF BLAZE, BT SIGNS ON FRONT AND BACK AND PAINTED RED BAND FOR NEW BT)

204-FOUND MONUMENT

(GCDB 120120) SW 1/16 CORNER OF SECTION 19 T. 30 S., R. 08 W., W.M.

APRIL 1980 BLM DEPENDENT RESURVEY BY JAMES E. JELLEY & WAYNE L. ROGERS, CADASTRAL SURVEYORS UNDER GROUP #1021 (DCSO RECORDS VOLUME 45, PAGE 17285) POINT FOR THE SW 1/16 SECTION CORNER OF SECTION 19, AT INTERSECTION WITH THE EAST AND WEST CENTERLINE OF THE SW 1/4 OF SECTION 19 SET AN IRON POST, 28" LONG, 2-1/2" DIA., 24" IN THE GROUND, WITH BRASS CAP MKD: SW 1/16 S19 1980 FROM WHICH: A FIR, 10" DIA., BEARS N 88' E, 7-1/2 LKS. DIST. MKD: SW 1/16 S19 BT A GRAND FIR, 15" DIA., BEARS S 55' W, 15-1/2 LKS. DIST. MKD: SW 1/16 S19 BT

MAY 23, 2023 GARRETT FINCH AND CREW WITH MINISTER AND GLAESER SURVEYING FOUND 3-1/4" BLM BRASS CAP, 0.3 FT ABOVE GROUND FROM WHICH: A 15" FIR BEARS N 88' E, 4.8 FT WITH HEALED BLAZE AND BT SIGN (1980) A 16" FIR BEARS S 60' W, 10.3 FT WITH HEALED BLAZE (1980) (SET CHAINING NAIL AT SIDE CENTER, BT SIGNS ON FRONT AND REAR, AND PAINTED RED BAND FOR EXISTING BT'S)

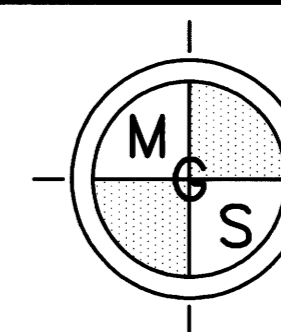
205-FOUND MONUMENT

(GCDB 120140) CENTER W 1/16 CORNER OF SECTION 19 T. 30 S., R. 08 W., W.M.

APRIL 1980 BLM DEPENDENT RESURVEY BY JAMES E. JELLEY & WAYNE L. ROGERS, CADASTRAL SURVEYORS UNDER GROUP #1021 (DCSO RECORDS VOLUME 45, PAGE 17284) POINT FOR THE CENTER W 1/16 SECTION CORNER OF SECTION 19 SET AN IRON POST, 28" LONG, 2-1/2" DIA., 22" IN THE GROUND, WITH BRASS CAP MKD: W 1/16 C--C S19 1980 FROM WHICH: A FIR, 13" DIA., BEARS N 24-1/2' W, 10-1/2 LKS. DIST. MKD: C-W 1/16 S19 BT A FIR, 13" DIA., BEARS S 7-1/2' E, 13 LKS. DIST. MKD: C-W 1/16 S19 BT

MAY 26, 2023 GARRETT FINCH AND CREW WITH MINISTER AND GLAESER SURVEYING FOUND 3-1/4" BLM BRASS CAP, 0.4 FT ABOVE GROUND FROM WHICH: A 16" FIR BEARS N 24-1/2' W, 7.9 FT, WITH HEALED BLAZE AND BT SIGN (1980) A ROTHOLE BEARS S 7-1/2' E, 8.4 F, DOWN TREE ALONGSIDE WITH HEALED BLAZE AND BT SIGN (1980) (SET CHAINING NAIL AT SIDE CENTER, BT SIGNS ON FRONT AND REAR, AND PAINTED RED BAND FOR EXISTING BT)

ESTABLISHED THE FOLLOWING: A 14" FIR BEARS S 30' W, 16.2 FT MKD: C W 1/16 S19 BT (SET CHAINING NAIL AT SIDE CENTER, NAIL AND WASHER STAMPED "PLS 2830" AT BASE OF BLAZE, BT SIGNS ON FRONT AND BACK AND PAINTED RED BAND FOR NEW BT)



MINISTER-GLAESER SURVEYING INC. 2200 E. EVERGREEN BLVD. VANCOUVER, WA 98661 (360) 694-3313

SCALE: N/A JOB NO. 22-319 DATE: 11/28/2023 CALC BY: DAR DRAWN BY: RDH CHECKED BY: DAR SHEET 3 OF 4

206--FOUND MONUMENT

CORNER P-3, (GCDB 140340)
 CENTER 1/4 CORNER OF SECTION 19 T. 30 S., R. 08 W., W.M.

APRIL 1980
 BLM DEPENDENT RESURVEY BY JAMES E. JELLEY AND WAYNE L. ROGERS, CADASTRAL SURVEYORS
 UNDER GROUP #1021
 (DCSO VOLUME 45, PAGES 17282-3)
 POINT FOR THE 1/4 SECTION CORNER OF SECTION 19 AT THE INTERSECTION WITH THE E & W CENTERLINE.
 SET AN IRON POST, 28" LONG, 2-1/2" DIA., 24" IN THE GROUND, WITH BRASS CAP MARKED:
 T30S RBW C 1/4 S19 1980
 FROM WHICH:
 A FIR, 6" DIA., BEARS S 27-1/2' E, 11-1/2 LKS. DIST. MKD: C 1/4 S19 BT
 A FIR, 6" DIA., BEARS N 25-1/2' W, 6 LKS. DIST. MKD: C 1/4 S19 BT
 (SET CHAINING NAIL AT SIDE CENTER, BT SIGNS ON FRONT AND REAR, AND PAINTED RED BAND FOR EXISTING BT)

MAY 24, 2023
 GARRETT FINCH AND CREW WITH MINISTER AND GLAESER SURVEYING
 FOUND A 3-1/4" BLM BRASS CAP, 0.4 FT ABOVE GROUND FROM WHICH:
 A 12" FIR BEARS N 20' W, 4.3 FT, WITH HEALED BLAZE AND BT SIGNS (1980)
 A 14" FIR BEARS S 30' E, 7.8 FT, WITH HEALED BLAZE AND BT SIGNS (1980)
 (SET CHAINING NAIL AT SIDE CENTER, NAIL AND WASHER STAMPED "PLS 2830" AT BASE OF BLAZE, BT SIGNS ON FRONT AND BACK AND PAINTED RED BAND FOR NEW BT)

207--FOUND MONUMENT

CORNER P-5, (GCDB 200340)
 1/4 CORNER OF SECTIONS 19 & 20 T. 30 S., R. 08 W., W.M.

JULY 28, 1882
 GLO SURVEY BY W.H. BYARS
 UNDER CONTRACT #456
 (DCSO RECORDS VOLUME 17, PAGE 7359)
 SET AN OAK POST, 3 FT LONG, 3" SQUARE, 18" IN THE GROUND, FOR 1/4 SECTION CORNER, MARKED 1/4 S ON W FACE; FROM WHICH:
 AN OAK, 12" DIA., BEARS S 75' E, 41 LKS. MKD: 1/4 S BT
 A LAUREL, 12" DIA., BEARS S 5' W, 38 LKS. MKD: 1/4 S BT

SEPTEMBER 1965
 DCSO VRT (C.S. FILE 53/67-27)
 REPORTED AS NOT FOUND

AUGUST - SEPTEMBER 1972
 BLM DEPENDENT RESURVEY BY CHARLES E. AKIN, JR., CADASTRAL SURVEYOR
 UNDER GROUP #795
 (DCSO RECORDS VOLUME 37, PAGES 15227-8)
 POINT FOR 1/4 SECTION CORNER OF SECTIONS 19 & 20, AT PROPORTIONATE DISTANCE; THERE IS NO REMAINING EVIDENCE OF THE ORIGINAL CORNER.
 SET AN IRON POST, 28 LONG, 2-1/2" DIA., 22" IN THE GROUND WITH BRASS CAP MARKED:
 T30S RBW 1/4 S19 S20 1972
 FROM WHICH:
 A FIR, 20" DIA., BEARS S 75' E, 49 LKS. MKD: 1/4 S20 BT
 A FIR, 18" DIA., BEARS WEST, 45 LKS. MKD: 1/4 S19 BT

JUNE 1973
 BRUCE A. SHANER FOR MOORE MILL AND LUMBER CO.
 (MAP FILE M49-25)
 FOUND BRASS CAP MKD. U.S. DEPT. OF THE INTERIOR CADASTRAL SURVEY BUREAU OF LAND MANAGEMENT T30S RBW S19 S20 1972 FROM WHICH:
 A 10" DOUGLAS FIR BEARS S 75' E, 32.3' WITH SCRIBE VISIBLE
 A 16" DOUGLAS FIR BEARS WEST, 28.1' WITH SCRIBE VISIBLE (REC. 29.7')

APRIL 1980
 BLM DEPENDENT RESURVEY BY JAMES E. JELLEY & WAYNE L. ROGERS, CADASTRAL SURVEYOR
 UNDER GROUP #1021
 (DCSO RECORDS VOLUME 45, PAGES 17283-4)
 THE 1/4 CORNER OF SECTIONS 19 & 20, MONUMENTED WITH AN IRON POST, 2-1/2" DIA., FIRMLY SET, PROJECTING 6" ABOVE GROUND, WITH BRASS CAP (PROPERLY) MARKED.
 FROM WHICH BEARING TREES MARKED BY AKIN:
 A FIR, 13" DIA., BEARS S 75' E, 49 LKS., WITH HEALED BLAZE
 A FIR, 20" DIA., BEARS WEST, 42 LKS., WITH ILLEGIBLE SCRIBE MARKS VISIBLE ON PARTIALLY HEALED BLAZE (REC 45 LKS.)

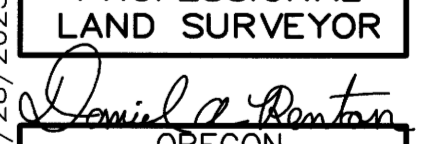
MAY 2020 - FEBRUARY 2021
 BLM DEPENDENT RESURVEY BY JEFFREY O. COVINGTON, CADASTRAL SURVEYOR
 UNDER GROUP #2972
 (DCSO RECORDS VOLUME 59, PAGE 23965)
 THE 1/4 SECTION CORNER OF SECTIONS 19 & 20, REPORTED BY JELLEY AND ROGERS IN 1980, MONUMENTED WITH AN IRON POST, 2-1/2" DIA., FIRMLY SET, PROJECTING 6" ABOVE GROUND, WITH BRASS CAP (PROPERLY) MARKED.
 FROM WHICH THE REMAINS OF THE BEARING TREES REPORTED BY JELLEY AND ROGERS:
 A FIR STUMP, 20" DIA., BEARS S 75' E, 32.3 FT, WITH HEALED BLAZE
 A FIR, 23" DIA., BEARS S 88-1/2' W, 27.7 FT, WITH HEALED DOUBLE BLAZE (RECORD W, 29.7 FT) AND A NEW BEARING TREE:
 A CEDAR, 7" DIA., BEARS N 64-3/4' E, 27.3 FT, MKD: 1/4 S20 BT
 EACH NEW BT HAS A 2-1/2"x1/4" MAGNETIC NAIL (MAG NAIL) DRIVEN AT THE BASE RIGHT SIDE CENTER & EACH MONUMENT ESTABLISHED OR REMONUMENTED AS A MAGNET DEPOSITED IN A WHITE PLASTIC CASE AT THE BASE OF THE STAINLESS STEEL POST. ALUMINUM ANGLE IRON DRIVEN ALONGSIDE EACH MONUMENT.

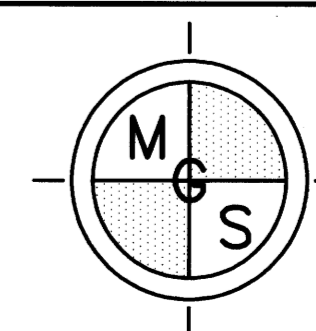
MAY 26, 2023
 GARRETT FINCH AND CREW WITH MINISTER AND GLAESER SURVEYING
 FOUND A 3-1/4" BLM BRASS CAP, 0.5 FT ABOVE GROUND FROM WHICH:
 A 24" FIR BEARS WEST, 27.7 FT, WITH HEALED BLAZE AND MOORE MILL & LUMBER AND BT SIGNS (1972)
 AN 8" CEDAR BEARS N 64-3/4', 27.3 FT, WITH BT SIGNS AND VISIBLE SCRIBE MKD: 1/4 S20 BT (2020)
 A 20" STUMP BEARS S 75' E, 32.3 FT, WITH HEALED BLAZE (1972)
 (SET CHAINING NAIL AT SIDE CENTER, BT SIGNS ON FRONT AND REAR, AND PAINTED RED BAND FOR EXISTING BT'S)

RECORD OF SURVEY

LOCATED IN A PORTION OF
 GOV'T LOTS 1, 2, 5, 6 AND
 THE NW 1/4, NE 1/4 AND SW 1/4
 OF SECTION 19, T. 30 S., R. 8 W., W.M.
 BEETLE BATTLE SOUTH-TASK D
 DOUGLAS COUNTY, OREGON
 CONTRACT NO. 1204T020D0010
 TASK ORDER NO. 140L4322F0063

FILED
 DATE: **12-5-2023** BY: **DR**
 THIS SURVEY CONSISTS OF:
 MAP: **M178-74A-D**
 NARRATIVE:
 CORNER RPT:
 DOUGLAS COUNTY
 SURVEYOR

11/28/2023
 REGISTERED
 PROFESSIONAL
 LAND SURVEYOR

 OREGON
 JUNE 30, 1997
 DANIEL A. RENTON
 2830
 Expires 12-31-2024



MINISTER-GLAESER
 SURVEYING INC.
 2200 E. EVERGREEN BLVD.
 VANCOUVER, WA 98661
 (360) 694-3313

SCALE: N/A
 JOB NO. 22-319
 DATE: 11/28/2023
 CALC BY: DAR
 DRAWN BY: RDH
 CHECKED BY: DAR
 SHEET 4 OF 4