

200-FOUND MONUMENT

CORNER E-9, (GCDB 300600) CORNER OF SECTIONS 4, 5, 8 & 9 T. 30 S., R. 08 W., W.M.

JULY 28, 1882 GLO SURVEY BY W.H. BYARS, DEPUTY SURVEYOR UNDER CONTRACT NO. 456 (DSCO RECORDS VOLUME 17, PAGE 7351) SET A POST 4 FT LONG, 4" SQUARE, 24" IN THE GROUND FOR THE CORNER TO SECTIONS 4, 5, 8 & 9, MARKED T 30S R8W S4 ON THE NE FACE, S9 ON THE SE FACE, S8 ON THE SW FACE AND S5 ON THE NW FACE, WITH 5 NOTCHES ON THE SOUTH AND 4 NOTCHES ON THE EAST EDGES, FROM WHICH: A CEDAR, 26" DIA. BEARS N 20° E, 30 LKS, MKD: T30S R8W S4 BT A FIR, 10" DIA. BEARS S 19° E, 22 LKS, MKD: T30S R8W S9 BT A FIR, 12" DIA. BEARS S 74° W, 43 LKS, MKD: T30S R8W S8 BT A FIR, 8" DIA. BEARS N 35° W, 36 LKS, MKD: T30S R8W S5 BT

SEPTEMBER 1964 DOUGLAS COUNTY SURVEYOR'S OFFICE VERNON "RAY" TRACY, MIKE DARBY AND JACK BARNETT (C.S. FILE 53/67-35) FOUND 26", NOW 38" ORIG. CEDAR N 20° E 19.8 FT, OPENED & SHOWS "30S R8W S4" SCRIBED. NO TRACE OF OTHER BT'S. CEDAR HAS FIRE SCARS. SET BRASS CAP AT CORNER MKD: COUNTY SURVEYORS OFFICE T30S R8W S5 S4 S8 S9 1964 NEW BT'S:

9" D.FIR N 07° W, 15.0 FT MKD: T30S R8W S5 CS BT 11" D.FIR N 43° E, 18.4 FT MKD: T30S R8W S4 CS BT 12" D.FIR S 40° E, 5.1 FT MKD: T30S R8W S9 CS BT 10" D.FIR, S 50° W, 7.8 FT MKD: T30S R8W S8 CS BT

JULY 1989 - APRIL 1993 BLM DEPENDENT RESURVEY BY DALE T. BEDELL & BRYAN S SEIBOLD, CADASTRAL SURVEYORS UNDER GROUP NO. 1494 (DCSO RECORDS VOLUME 50, PAGE 19022-3) THE CORNER OF SECTIONS 4, 5, 8 AND 9 PERPETUATED BY TRACY, IN 1964, MONUMENTED WITH AN IRON POST, 1-1/2" DIA, FIRMLY SET, PROJECTING 4" ABOVE GROUND, WITH BRASS CAP (PROPERLY) MARKED FROM WHICH THE REMAINING ORIGINAL BEARING TREE: A CEDAR 45" DIA, BEARS N 20° E, 30 LKS, WITH HEALED BLAZE AND BEARING TREES MKD BY TRACY: A FIR, 15" DIA, BEARS N 43° E, 27-1/2 LKS, WITH HEALED BLAZE A FIR, 21" DIA, BEARS S 43-1/4° E, 7-1/2 LKS, WITH HEALED BLAZE A FIR, 15" DIA, BEARS S 52-1/4° W, 12 LKS, WITH HEALED BLAZE A FIR, 11" DIA, BEARS N 6-3/4° W, 24 LKS, WITH HEALED BLAZE THE CORNER IS LOCATED 1.15 CHAINS NORTH OF DIRT ROAD, 20 LKS WIDE, BEARS N 50° E AND S 80° W LATITUDE 42°58'57.24" N LONGITUDE 123°39'39.44" W (NAD 1927) FROM THIS POINT, THE BLM GEODETIC CONTROL STATION NO. EC41007, AT LATITUDE 42°58'03.492" N, LONGITUDE 123°39'36.870" W (NAD1927), DETERMINED BY THE NAVSTAR GPS, BEARS S 2°00'28" E, 82.497 CHAINS

FEBRUARY 2013 D. EDWARDS (C.S. FILE 65/79-2) FOUND SECTION CORNER AS PER 1993 BLM RESURVEY

APRIL 2013 - FEBRUARY 2014 BLM RESURVEY BY GEORGE M. WINTER, CADASTRAL SURVEYOR UNDER GROUP NO. 2698 (DCSO RECORDS VOLUME 58, PAGE 23156) THE CORNER OF SECTIONS 4, 5, 8 AND 9, PERPETUATED BY THE DOUGLAS COUNTY SURVEYOR'S OFFICE IN 1964-65, MONUMENTED WITH AN IRON POST, 1-1/2" DIA., FIRMLY SET, PROJECTING 4" ABOVE GROUND, WITH BRASS CAP (PROPERLY) MARKED, FROM WHICH THE REMAINS OF AN ORIGINAL BEARING TREE: A CEDAR, 47" DIA, BEARS N 20° E, 19.8 FT, WITH A HEALED BLAZE AND BT'S MARKED BY THE DOUGLAS COUNTY SURVEYOR'S OFFICE: A FIR, 16" DIA, BEARS N 43° E, 18.1 FT, WITH HEALED BLAZE A FIR, 25" DIA, BEARS S 43-1/4° E, 4.9 FT, WITH HEALED BLAZE A FIR, 17" DIA, BEARS S 52-1/4° W, 7.9 FT, WITH HEALED BLAZE A FIR, 11" DIA, BEARS N 6-3/4° W, 15.8 FT, WITH HEALED BLAZE FROM THE CORNER: WEST 34 FT, DIRT ROAD, 16 FT WIDE, BEARS N 10° E AND S 50° W, IN A CURVE NAD 83(2011) LATITUDE: 42°58'56.66" N LONGITUDE: 123°39'43.67" W

APRIL 25, 2023 GARRETT FINCH AND CREW WITH MINISTER AND GLAESER SURVEYING FOUND 2-1/2" COUNTY SURVEYORS OFFICE BRASS CAP ON PIPE, 0.4 FT ABOVE GROUND FROM WHICH: A 29" FIR BEARS S 40° E, 5.2 FT WITH 2 HEALED BLAZES AND BT SIGNS (1964) A 20" FIR BEARS S 52° W, 7.8 FT WITH HEALED BLAZE AND BT SIGN (1964) AN 11" FIR SNAG BEARS N 01° W, 16.0 FT WITH HEALED BLAZE AND BT SIGN (1964) A 19" FIR BEARS BEARS N 43° E, 18.5 FT WITH HEALED BLAZE AND BT SIGNS (1964) A 51" CEDAR BEARS N 22° E, 20.4 FT WITH HEALED BLAZE AND BT SIGN (1882) (SET CHAINING NAIL AT SIDE CENTER, BT SIGNS ON FRONT AND REAR, AND PAINTED RED BAND FOR EXISTING BT'S)

ESTABLISHED THE FOLLOWING: AN 18" FIR BEARS N 54° W, 5.5 FT MKD "T30S R8W S5 BT" (SET CHAINING NAIL AT SIDE CENTER, NAIL AND WASHER STAMPED "PLS 2830" AT BASE OF BLAZE, BT SIGNS ON FRONT AND BACK AND PAINTED RED BAND FOR NEW BT)

201-FOUND MONUMENT

CORNER C-9, (GCDB 300640) 1/4 CORNER OF SECTIONS 4 & 5 T. 30 S., R. 08 W., W.M.

JULY 28, 1882 GLO SURVEY BY W.H. BYARS, DEPUTY SURVEYOR UNDER CONTRACT NO. 456 (DSCO RECORDS VOLUME 17, PAGE 7353) SET A CEDAR POST 3 FT LONG, 3" SQUARE, 18" IN GROUND, FOR 1/4 SECTION CORNER MARKED 1/4 S ON WEST FACE FROM WHICH: A CEDAR, 8" DIA. BEARS S 45° E, 19 LKS, MKD 1/4 S BT A FIR, 50" DIA. BEARS S 80° W, 16 LKS, MKD 1/4 S BT

APRIL 8, 1965 DCSO, VRT - C.S. FILE 53/67-54 REPORTED AS NOT FOUND

JULY 1989 - APRIL 1993 BLM DEPENDENT RESURVEY BY DALE T. BEDELL & BRYAN S SEIBOLD, CADASTRAL SURVEYORS UNDER GROUP NO. 1494 (DCSO RECORDS VOLUME 50, PAGE 19023-4) POINT FOR THE 1/4 SECTION CORNER OF SECTIONS 4 & 5, AT PROPORTIONATE DISTANCE; THERE IS NO REMAINING EVIDENCE OF THE ORIGINAL CORNER. SET A STAINLESS STEEL POST, 28" LONG, 2-1/2 DIA., 22" IN THE GROUND, WITH BRASS CAP MKD: T30S R8W 1/4 S5 S4 1990 FROM WHICH: A HEMLOCK, 18" DIA. BEARS S 59-1/4° E, 31-1/2 LKS, MKD. 1/4 S4 BT A G.FIR, 17" DIA. BEARS S 77-1/2° W, 27-1/2 LKS, MKD. 1/4 S5 BT

201 CONT.

MAY 10, 2023 AUGUST KARLSEN AND CREW WITH MINISTER AND GLAESER SURVEYING FOUND 3-1/4" BLM BRASS CAP ON STEEL POST, 0.8 FT ABOVE GROUND FROM WHICH: AN ALUMINUM POST WITH BLM BOUNDARY SIGN BEARS SOUTH 5 FT AN 18" STUMP BEARS S 62° E, 20.8 FT MKD "1/4 S4 BT" (1989) (SET CHAINING NAIL AT TOP CENTER OF STUMP, BT SIGN ON TOP, AND PAINTED RED BAND FOR EXISTING BT)

ESTABLISHED THE FOLLOWING: A 6" HEMLOCK BEARS N 74° E, 6.3 FT MKD "1/4 S4 BT" A 4" HEMLOCK BEARS S 22° W, 19.9 FT MKD "1/4 S5 BT" (SET CHAINING NAIL AT SIDE CENTER, NAIL AND WASHER STAMPED "PLS 2830" AT BASE OF BLAZE, BT SIGNS ON FRONT AND BACK AND PAINTED RED BAND FOR NEW BT'S)

202-FOUND MONUMENT

CORNER E-1, (GCDB 100600) CORNER OF SECTIONS 6 & 7 T. 30 S., R. 08 W., W.M. AND SECTIONS 1 & 12 T. 30 S., R. 09 W., W.M.

APRIL 12, 1855 GLO SURVEY BY DENNIS HATHORN, DEPUTY SURVEYOR UNDER CONTRACT NO. 57 (DSCO RECORDS VOLUME 17, PAGE 7369) SET POST CORNER SECTIONS 1, 12, 6 AND 7, FROM WHICH: A FIR 24" DIA. BEARS N 52° W, 24 LKS. DISTANCE A FIR 24" DIA. BEARS S 55° W, 45 LKS. DISTANCE A FIR 24" DIA. BEARS N 53° E, 25 LKS. DISTANCE A FIR 9" DIA. BEARS S 45° E, 55 LKS. DISTANCE

JULY 28, 1882 GLO SURVEY BY W.H. BYARS, DEPUTY SURVEYOR UNDER CONTRACT NO. 456 (DCSO RECORDS VOLUME 17, PAGE 7366) FOUND AND USED

JULY 9, 1962 DOUGLAS COUNTY SURVEYOR'S OFFICE JAMES BYRON, DEPUTY - S. BILOW, CREW (C.S. FILE 49/100-2) FOUND:

ORIGINAL 24" NOW 36" FIR SNAG, S 55° W, 29.7 FT, HAS GOOD BARK SCRIBING, "S12 T30S R9W" ORIGINAL 9" NOW 26" W. FIR, S 45° E, 36.3 FT, GOOD BARK SCRIBING ABOVE AND GOOD SCAR BELOW ORIGINAL 24" NOW 40" FIR, STUMP SHOWS GOOD SCAR NEAR BASE ORIGINAL 24" NOW 36" FIR, N 53° E, 16.5 FT, NOW DOWN SET BRASS CAP AT CORNER MKD: COUNTY SURVEYORS OFFICE T30S R9W S1 S12 S6 S7 R8W 1958 NEW BT'S: 9" W. FIR, S 8° W, 38.0 FT, SCRIBED S12 T30S R9W CS BT 8" W. FIR, S 67° E, 15.5 FT, SCRIBED S7 T30S R8W CS BT 8" W. FIR, N 25-1/2° E, 27.3 FT, SCRIBED S6 T30S R8W CS BT 16" W. FIR, N 36° W, 45.0 FT, SCRIBED S1 T30S R9W CS BT

AUGUST - NOVEMBER 1986 BLM DEPENDENT RESURVEY BY WAYNE L. ROGERS, DALE T. BEDELL & BOYD W. PETERSON CADASTRAL SURVEYORS UNDER GROUP NO. 1339 (DCSO RECORDS VOLUME 48, PAGE 18357-58) FOUND AND USED

NOVEMBER 1988 HOWARD W. JOHNSTONE (MAP FILE M101-44) FOUND 1958 COUNTY BCIP MARKED 1, 6, 7, 12 FROM WHICH: A FIR, 30" DIA., BEARS N 36° W, 45.0 FT, HEALED A FIR, 20" DIA., BEARS N 25-1/2° E, 27.3 FT, HEALED A FIR, 36" DIA., BEARS S 45° E, 36.3 FT, BARK SCRIBED A FIR, 20" DIA., BEARS S 67° E, 15.5 FT, HEALED A FIR, 16" DIA., BEARS S 08° W, 38.0 FT, HEALED (THE 1988 JOHNSTONE UTILIZATION IS NOT SHOWN ON THE DCSO CORNER RENEWAL)

MAY 2001 BLM RESURVEY BY A. BERT SKEESICK, CADASTRAL SURVEYOR UNDER GROUP #1973 (DCSO RECORDS VOLUME 54, PAGE 20794) BEGINNING AT THE CORNER OF SECTIONS 1, 6, 7 & 12 ON THE E BDY. OF THE TP., MONUMENTED WITH AN IRON POST, 1-1/2" DIA., FIRMLY SET, PROJECTING 18" ABOVE GROUND, WITH BRASS CAP (PROPERLY) MKD. FROM WHICH THE REMAINS OF THE ORIGINAL BEARING TREES: A ROOT HOLE BEARS N 53° E, 16.5 FT, WITH DECAYED STUMP LYING NEARBY, NO VISIBLE MARKS A BURNT SNAG, 35" DIA., BEARS S 45° E, 37.3 FT, WITH NO MARKS VISIBLE AND BEARING TREES MKD. BY BRYON: A FIR, 20" DIA., BEARS N 25° E, 27.7 FT, WITH HEALED BLAZE A FIR, 27" DIA., BEARS S 67° E, 15.8 FT, WITH HEALED BLAZE A FIR, 22" DIA., BEARS S 6-1/2° W, 38.2 FT, WITH HEALED BLAZE (RECORD S 8° W) A FIR, 31" DIA., BEARS N 38° W, 44.9 FT, WITH HEALED BLAZE (RECORD N 36° W) FROM THIS POINT, THE BLM GEODETIC CONTROL STATION NO. EC 41304 DETERMINED BY THE NAVSTAR GPS, UTILIZING STATIC CARRIER PHASE RECEIVERS, (SEE CONTROL DATA SHEET ATTACHED TO THESE FIELD NOTES FOLLOWING THE GENERAL DESCRIPTION) BEARS S 53°35'53" E, 869.47 FT, (MEAN BEARING AND SEA LEVEL DISTANCE) MONUMENTED WITH AN ALUMINUM CAP, 3-1/4" DIA. FIRMLY SET FLUSH WITH GROUND, WITH TOP MKD. EC 41304 GPS 2001.

JULY 2003 FOUND OK BY T. RAMBO (M142-69)

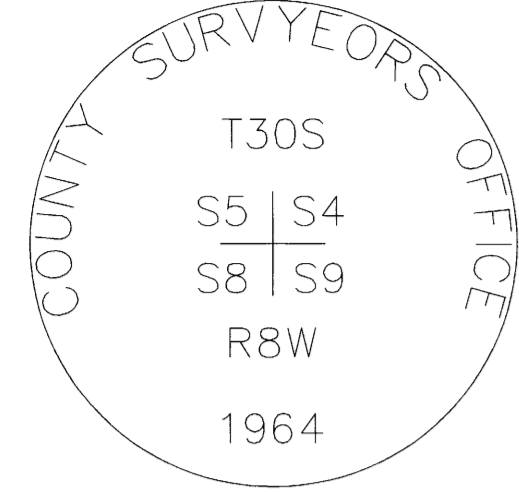
MAY 23, 2023 GARRETT FINCH AND CREW WITH MINISTER AND GLAESER SURVEYING FOUND 2-1/2" BRASS CAP ON PIPE, 1.5 FT ABOVE GROUND FROM WHICH: A 33" FIR BEARS S 67° E, 15.8 FT WITH HEALED BLAZE AND BT SIGN (1962) A 17" ROTTED SNAG, BEARS S 45° E, 36.0 FT (1855) A 24" FIR, DEAD, BEARS S 07° W, 38.2 FT WITH HEALED BLAZE AND BT SIGN (1962) AN 18" SNAG BEARS N 25° E, 27.6 FT WITH HEALED BLAZE AND BT SIGN (1962) A MOUND OF WOOD DEBRIS BEARS N 53° E, 16.5 FT (ONLY REMAINING EVIDENCE) (1855) A ROOTHOLE BEARS N 38° W, 45 FT, TREE DOWN TO NORTH WITH BT SIGN (1962) (SET CHAINING NAIL AT SIDE CENTER, BT SIGNS ON FRONT AND REAR, AND PAINTED RED BAND FOR EXISTING BT'S)

ESTABLISHED THE FOLLOWING: A 6" FIR BEARS S 06° W, 18.2 FT MKD "T30S R9W S12 BT" AN 8" FIR BEARS N 20° E, 29.8 FT MKD "T30S R8W S6 BT" A 13" FIR BEARS N 10° W, 40.0 FT MKD "T30S R9W S1 BT" (SET CHAINING NAIL AT SIDE CENTER, NAIL AND WASHER STAMPED "PLS 2830" AT BASE OF BLAZE, BT SIGNS ON FRONT AND BACK AND PAINTED RED BAND FOR NEW BT'S)

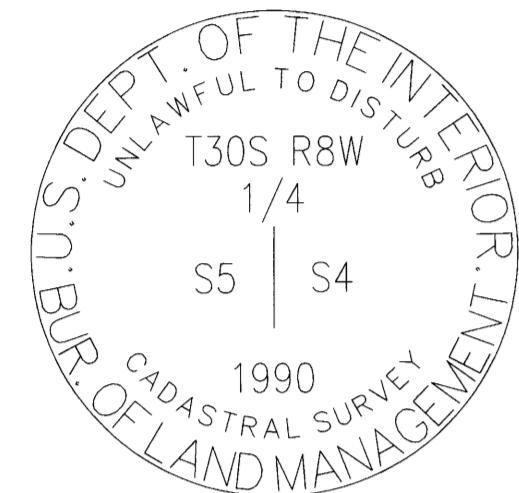
RECORD OF SURVEY

FILED DATE: 12-4-2023 BY: 99 THIS SURVEY CONSISTS OF: MAP: M17B-73A-D NARRATIVE: CORNER RPT: DOUGLAS COUNTY SURVEYOR

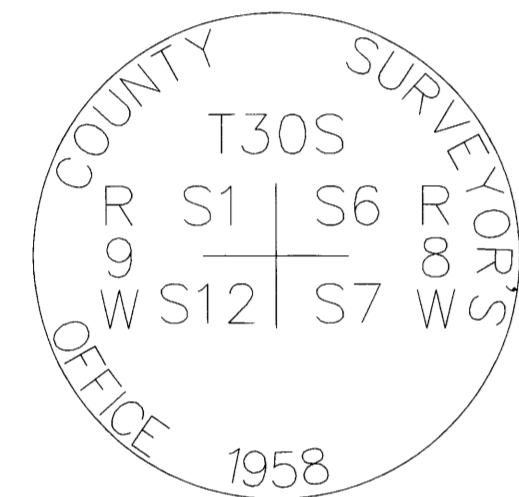
LOCATED IN A PORTION OF THE SW 1/4 OF SECTION 4 THE SE 1/4 OF SECTION 5 GOVT LOTS 1, 2, 3, 4 IN THE THE NW 1/4 AND SW 1/4 OF SECTION 7 T. 30 S., R. 8 W., W.M. THE NE 1/4 AND SE 1/4 OF SECTION 12 T. 30 S., R. 9 W., W.M. BEETLE BATTLE NORTH-TASK C DOUGLAS COUNTY, OREGON CONTRACT NO. 1204T020D0010 TASK ORDER NO. 140L4322F0063



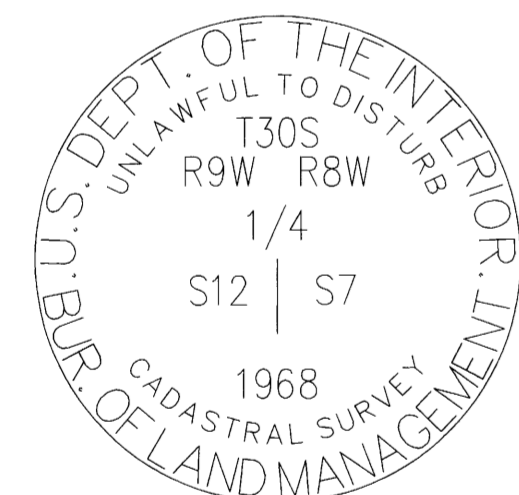
POINT NUMBER: 200



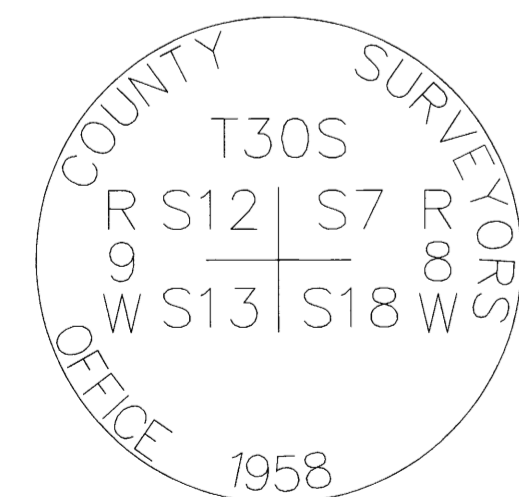
POINT NUMBER: 201



POINT NUMBER: 202



POINT NUMBER: 203



POINT NUMBER: 204

203-FOUND MONUMENT

CORNER G-1, (GCDB 100540) 1/4 CORNER OF SECTION 7 T. 30 S., R. 09 W., & SECTION 12 T. 30 S., R. 08 W., W.M.

APRIL 12, 1855 GLO SURVEY BY DENNIS HATHORN, DEPUTY SURVEYOR UNDER CONTRACT #57 (DCSO RECORD VOLUME 17, PAGE 7370) SET 1/4 SECTION POST, FROM WHICH: A CHINQUAPIN 9" DIA., BEARS S 60° W, 10 LKS. DIST. A CHINQUAPIN 6" DIA., BEARS S 65° E, 26 LKS. DIST.

AUGUST - NOVEMBER 1986 BLM RESURVEY BY WAYNE L. ROGERS, DALE T. BEDELL & BOYD W. PETERSON, CADASTRAL SURVEYORS UNDER GROUP #1339 POINT FOR THE 1/4 CORNER, AT PROPORTIONATE DISTANCE; THERE IS NO REMAINING EVIDENCE OF THE ORIGINAL CORNER. SET A STAINLESS STEEL POST, 28" LONG, 2-1/2" DIA., 22" IN THE GROUND, WITH BRASS CAP MKD: "T30S R9W R8W 1/4 S12 S7 1986" FROM WHICH: A FIR 14" DIA., BEARS N 60° E, 31-1/2 LKS. DIST. MKD. 1/4 S7 BT A FIR 12" DIA., BEARS N 12° W, 8-1/2 LKS. DIST. MKD. 1/4 S12 BT DEPOSIT WHITE "DEEP-1" MAGNETIC MARKED AT BASE OF STAINLESS STEEL POST

NOVEMBER 1988 SURVEY BY HOWARD W. JOHNSTONE, LS #498 - FOR: ROSEBURG RESOURCES (M 101-44) CORNER REPORT ONLY, FOUND: 1988 CADASTRAL BRASS CAP/IRON PIPE MKD: 1/4 S12 S7 10" FIR N 12° W, 5.6 FT, SCRIBE VISIBLE 12" FIR N 60° E, 20.8 FT, SCRIBE VISIBLE (AT THE TIME OF THIS REPORT, THE ABOVE BLM SURVEY HAD NOT BEEN PUT ON FILE WITH THE DCSO)

MAY - JULY 2003 TROY RAMBO FOR ROSEBURG RESOURCES (M142-69) FOUND 13" DF WITH HEALED FACE - BEARS N 12° W, 8-1/2 LKS FOUND 14" DF WITH HEALED FACE - BEARS N 60° E, 31-1/2 LKS SCRIBED "1/4 S12 BT" ON AN 11" DF - BEARS S 59° W, 3.4 FT SCRIBED "1/4 S7 BT" ON AN 8" DF - BEARS S 5° E, 13.1 FT ALL NEW BT'S WERE MEASURED TO A 6" SPIKE AT SIDE CENTER BASE. BEARINGS WERE MEASURED WITH A HAND COMPASS WITH DECL. OF 17° E

MAY 17, 2023 AUGUST KARLSEN AND CREW WITH MINISTER AND GLAESER SURVEYING FOUND 3-1/4" BLM BRASS CAP ON PIPE, 0.6 FT ABOVE GROUND FROM WHICH: AN ALUMINUM POST WITH BLM BOUNDARY SIGN BEARS NORTH 6 FT AN ALUMINUM POST WITH BLM BOUNDARY SIGN BEARS SOUTH 6 FT A 14" FIR BEARS S 54° W, 3.5 FT WITH HEALED BLAZE AND BT SIGN (2003) A 17" FIR BEARS N 16° W, 5.9 FT WITH HEALED BLAZE AND BT SIGNS (1988) A 16" FIR BEARS N 54° E, 20.5 FT WITH HEALED BLAZE AND BT SIGNS (1986) A 9-1/2" FIR BEARS S 06° E, 13.3 FT WITH HEALED BLAZE AND BT SIGNS (2003) (SET CHAINING NAIL AT SIDE CENTER, BT SIGNS ON FRONT AND REAR, AND PAINTED RED BAND FOR EXISTING BT'S)



SCALE: N/A JOB NO. 22-319 DATE: 11/27/2023 CALC BY: DAR DRAWN BY: RDH CHECKED BY: DAR SHEET 3 OF 4