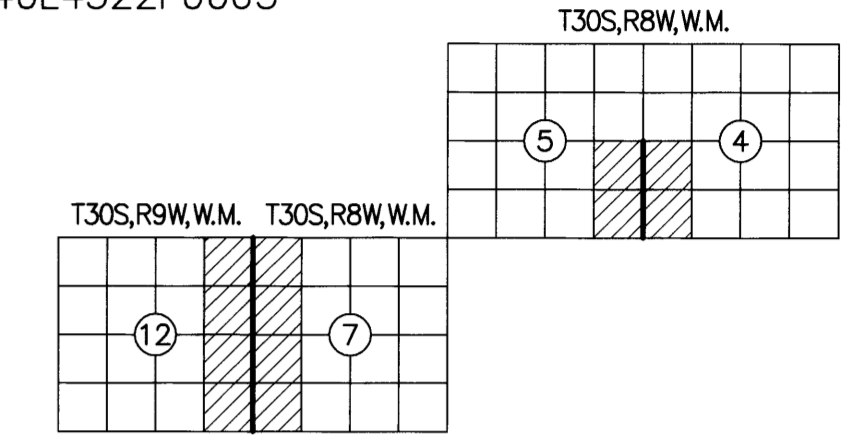


# RECORD OF SURVEY

FILED  
 DATE: 12-4-2023 BY: DR  
 THIS SURVEY CONSISTS OF:  
 MAP: M17B-73 A-D  
 NARRATIVE:  
 CORNER RPT:  
 DOUGLAS COUNTY  
 SURVEYOR

LOCATED IN A PORTION OF  
 THE SW 1/4 OF SECTION 4  
 THE SE 1/4 OF SECTION 5  
 GOVT LOTS 1, 2, 3, 4 IN THE  
 THE NW 1/4 AND SW 1/4 OF SECTION 7  
 T. 30 S., R. 8 W., W.M.  
 THE NE 1/4 AND SE 1/4 OF SECTION 12  
 T. 30 S., R. 9 W., W.M.  
 BEETLE BATTLE NORTH-TASK C  
 DOUGLAS COUNTY, OREGON  
 CONTRACT NO. 1204T020D0010  
 TASK ORDER NO. 140L4322F0063



### NARRATIVE:

THE PURPOSE OF THIS SURVEY WAS TO FULFILL THE CONTRACT (1204T020D0010/140L4322F0063) REQUIREMENTS FOR THE BEETLE BATTLE NORTH - TASK C CADASTRAL SURVEY AS LISTED BELOW:

- SECTION 4, T. 30 S., R. 8 W., W.M.
- SECTION 5, T. 30 S., R. 8 W., W.M.
- SECTION 7, T. 30 S., R. 8 W., W.M.
- SECTION 12, T. 30 S., R. 9 W., W.M.

### LOCATION OF PROJECT:

THIS PROJECT IS LOCATED APPROXIMATELY 24 MILES SOUTHWEST OF ROSEBURG, AND 2 MILES EAST OF HIGHWAY 42, DOUGLAS COUNTY, OREGON.

### GENERAL NOTES:

THIS CONTRACT IS FOR BOUNDARY LINE MARKING/POSTING AND BOUNDARY LINE MAINTENANCE. WE COMPLETED THE MAINTENANCE OF 5 CORNERS, AND SURVEYED AND POSTED 1.49 MILES OF BOUNDARY. ALL BOUNDARY WORK COMPLIED WITH THE SURVEY SPECIFICATIONS AND PROCEDURES OUTLINED IN THE BUREAU OF LAND MANAGEMENT MANUAL OF SURVEYING INSTRUCTIONS (2009). ALL CORNERS WERE MAINTAINED TO THE SPECIFICATIONS CONTAINED IN SECTION C OF THE R6 2020 CADASTRAL SURVEY IDIQ STANDARDS. SURVEY AND LAND RECORDS RESEARCH WAS PERFORMED TO VERIFY THE CHAIN OF SURVEY AT EACH CORNER PRIOR TO MAINTAINING THE CORNERS AND MARKING AND POSTING THE BOUNDARIES. BOUNDARY DELINEATOR POSTS AND SIGNS (SEE EXAMPLE SIGNS BELOW) WERE SET ALONG THE BOUNDARY WHERE GAPS IN THE EXISTING POSTING ARE FOUND AND THE BOUNDARY LINE BLAZING WAS ADDED OR REFRESHED. SIGNS OF ENCROACHMENT AND/OR TRESPASS WERE NOT FOUND.

THE EXISTING MONUMENTS SHOWN HEREIN WERE FOUND AT ACCEPTABLE POSITIONS, WERE MONUMENTED PROPERLY AND STANDARD CORNER MAINTENANCE WAS PERFORMED.

ALL CORNER SEARCH AND EVALUATION WAS PERFORMED BY DANIEL RENTON, PLS 2830. THE PROJECT AREA IS ACCESSED BY COUNTY ROADS, PRIVATE ROADS AND OTHER FOREST ROADS.

ALL NECESSARY SIGNS AND POSTS WERE PROVIDED BY THE BUREAU OF LAND MANAGEMENT.

THE BEARINGS SHOWN HEREIN FOR BEARING TREES WERE MEASURED USING A BRUNTON GEO TRANSIT COMPASS (MAGNETIC DECLINATION=15' EAST)

THE DISTANCES AND DIAMETERS SHOWN HEREIN FOR BEARING TREES WERE MEASURED USING A STEEL LOGGERS TAPE.

### TASK AND CORNERS MAINTAINED:

- SECTIONS 4 AND 5, T. 30 S., R. 8 W., W.M.
- TIE POSITIONS, VERIFY AND MAINTAIN THE FOLLOWING CORNERS:  
 MONUMENT 200, CORNER E-9, (GCDB 300600) CORNER OF SECTIONS 4, 5, 8 & 9  
 MONUMENT 201, CORNER C-9, (GCDB 300640) 1/4 CORNER OF SECTIONS 4 & 5  
 - SURVEY LINE, MARK AND POST BOUNDARY SHOWN HEREIN
- SECTION 7, T. 30 S., R. 8 W., W.M. AND SECTION 12, T. 30 S., R. 9 W., W.M.
- TIE POSITIONS, VERIFY AND MAINTAIN THE FOLLOWING CORNERS:  
 MONUMENT 202, CORNER E-1, (GCDB 100600) CORNER OF SECTIONS 1, 12, 6 & 7  
 MONUMENT 203, CORNER G-1, (GCDB 100540) 1/4 CORNER OF SECTIONS 7 & 12  
 MONUMENT 204, CORNER J-25, (GCDB 700500) CORNER OF SECTIONS 12, 13, 7 & 18  
 - SURVEY LINE, MARK AND POST BOUNDARY SHOWN HEREIN

### SURVEY FOR:

UNITED STATES DEPARTMENT OF THE INTERIOR BUREAU OF LAND MANAGEMENT  
 ROSEBURG DISTRICT OFFICE  
 777 NW GARDEN VALLEY BLVD  
 ROSEBURG, OR 97471

### SHEET INDEX

SHEET 1	VICINITY MAP, EQUIPMENT LIST, CONTROL DIAGRAM AND TABLE, CONTROL PROCEDURE, CERTIFICATES, POSTED SIGNS AND NARRATIVE
SHEET 2	SITE DETAILS, FOUND MONUMENT COORDINATE TABLE, REFERENCES AND LEGEND
SHEET 3	MONUMENT DETAILS AND CORNER HISTORY
SHEET 4	CORNER HISTORY

### EQUIPMENT LIST:

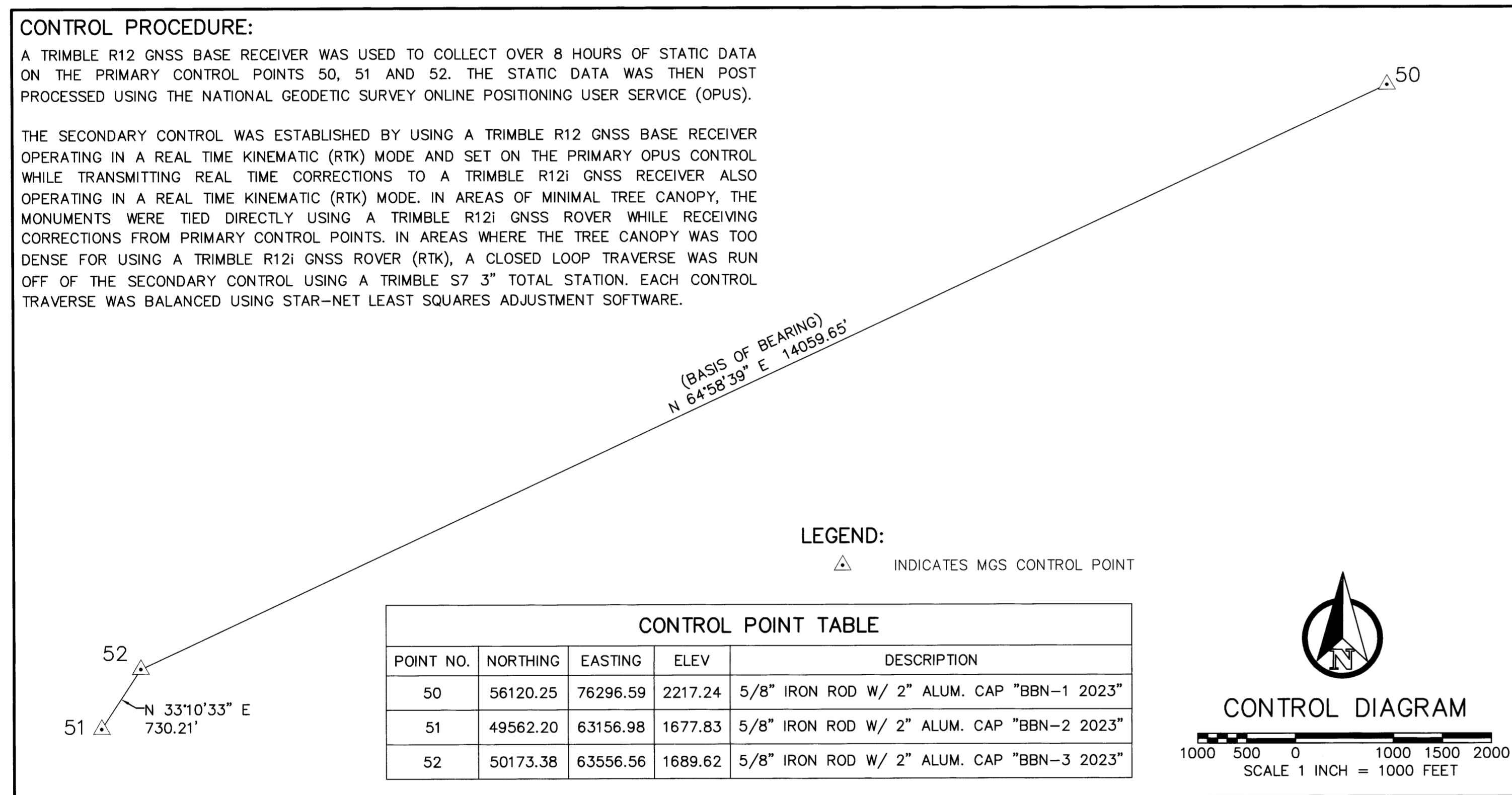
- 2018 GMC SIERRA 2500HD SURVEY TRUCK
- TRIMBLE R12 GNSS BASE RECEIVER
- TRIMBLE R12i GNSS ROVER RECEIVER
- TRIMBLE S7 3" TOTAL STATION
- SUUNTO HAND COMPASS (MAGNETIC DECLINATION=15' EAST)
- TRIMBLE TDL 450HX 35-WATT RADIO
- TRIMBLE TSC5 DATA COLLECTOR WITH TRIMBLE ACCESS SOFTWARE
- AUTODESK CIVIL 3D 2023
- TRIMBLE BUSINESS CENTER
- STAR-NET LEAST SQUARES ADJUSTMENT SOFTWARE

**BASIS OF BEARING:** N 64°58'39" E ALONG THE CONTROL LINE BETWEEN (MGS CONTROL POINT 52) AND (MGS CONTROL POINT 50) OREGON COORDINATE REFERENCE SYSTEM (OCRS), COTTAGE GROVE-CANYONVILLE ZONE, INTERNATIONAL FEET.

### CONTROL PROCEDURE:

A TRIMBLE R12 GNSS BASE RECEIVER WAS USED TO COLLECT OVER 8 HOURS OF STATIC DATA ON THE PRIMARY CONTROL POINTS 50, 51 AND 52. THE STATIC DATA WAS THEN POST PROCESSED USING THE NATIONAL GEODETIC SURVEY ONLINE POSITIONING USER SERVICE (OPUS).

THE SECONDARY CONTROL WAS ESTABLISHED BY USING A TRIMBLE R12 GNSS BASE RECEIVER OPERATING IN A REAL TIME KINEMATIC (RTK) MODE AND SET ON THE PRIMARY OPUS CONTROL WHILE TRANSMITTING REAL TIME CORRECTIONS TO A TRIMBLE R12i GNSS RECEIVER ALSO OPERATING IN A REAL TIME KINEMATIC (RTK) MODE. IN AREAS OF MINIMAL TREE CANOPY, THE MONUMENTS WERE TIED DIRECTLY USING A TRIMBLE R12i GNSS ROVER WHILE RECEIVING CORRECTIONS FROM PRIMARY CONTROL POINTS. IN AREAS WHERE THE TREE CANOPY WAS TOO DENSE FOR USING A TRIMBLE R12i GNSS ROVER (RTK), A CLOSED LOOP TRAVERSE WAS RUN OFF OF THE SECONDARY CONTROL USING A TRIMBLE S7 3" TOTAL STATION. EACH CONTROL TRAVERSE WAS BALANCED USING STAR-NET LEAST SQUARES ADJUSTMENT SOFTWARE.



UNITED STATES DEPARTMENT OF THE INTERIOR  
 BUREAU OF LAND MANAGEMENT

## BOUNDARY

NO TIMBER MAY BE CUT OR REMOVED WITHOUT AUTHORIZATION

T.  R.  SEC.  LINE IS APPROX.  FT.

CORNER IS APPROX.  FT.

POSTED BY  DATE

BLM OFFICE IS LOCATED AT

UNITED STATES DEPARTMENT OF THE INTERIOR  
 BUREAU OF LAND MANAGEMENT

## BEARING TREE

IT IS UNLAWFUL TO DESTROY, DEFACE, CHANGE OR REMOVE ANY CORNER OF THE PUBLIC LAND SURVEYS OR TO CUT DOWN OR DEFACE ANY BEARING TREE PERTAINING TO SUCH SURVEYS.

CORNER IS APPROXIMATELY  DISTANCE  DIRECTION

T.  R.  SEC.  POSTED BY  DATE

## LAND SURVEY MONUMENT

### PLEASE DO NOT DISTURB

THIS MONUMENT WAS LOCATED AS PART OF AN OFFICIAL LAND SURVEY. IT HELPS DEFINE LAND OWNERSHIP LINES.

FOR FURTHER INFORMATION CONTACT THE BUREAU OF LAND MANAGEMENT

REGISTERED PROFESSIONAL LAND SURVEYOR

OREGON  
 JUNE 30, 1997  
 DANIEL A. RENTON  
 2830

Expires 12-31-2024

MINISTER AND GLAESER SURVEYING, INC. MAKES NO WARRANTIES AS TO MATTERS OF UNWRITTEN TITLE SUCH AS ADVERSE POSSESSION, ACQUIESCENCE, ESTOPPEL, ETC.

MINISTER-GLAESER SURVEYING INC.  
 2200 E. EVERGREEN BLVD.  
 VANCOUVER, WA 98661  
 (360) 694-3313

SCALE: 1"=1000'  
 JOB NO. 22-319  
 DATE: 11/27/2023  
 CALC BY: DAR  
 DRAWN BY: RDH  
 CHECKED BY: DAR  
 SHEET 1 OF 4

# RECORD OF SURVEY

FILED  
 DATE: 12-4-2023 BY: [Signature]  
 THIS SURVEY CONSISTS OF:  
 MAP: M178-73 A-D  
 NARRATIVE:  
 CORNER RPT:  
 DOUGLAS COUNTY  
 SURVEYOR

LOCATED IN A PORTION OF  
 THE SW 1/4 OF SECTION 4  
 THE SE 1/4 OF SECTION 5  
 GOV'T LOTS 1, 2, 3, 4 IN THE  
 THE NW 1/4 AND SW 1/4 OF SECTION 7  
 T. 30 S., R. 8 W., W.M.  
 THE NE 1/4 AND SE 1/4 OF SECTION 12  
 T. 30 S., R. 9 W., W.M.  
 BEETLE BATTLE NORTH-TASK C  
 DOUGLAS COUNTY, OREGON  
 CONTRACT NO. 1204T020D0010  
 TASK ORDER NO. 140L4322F0063

### GLO REFERENCES:

- (1856) GENERAL LAND OFFICE SURVEY AND NOTES FOR SECTION 12, T. 30 S., R. 9 W., W.M. EXECUTED BY DENNIS HATHORN UNDER CONTRACT NO. 57 SURVEYED JULY 7, 1856 SURVEY DATED OCTOBER 9, 1946 (1278)
- (1882) GENERAL LAND OFFICE SURVEY AND NOTES FOR SECTIONS 4 & 5, T. 30 S., R. 8 W., W.M. EXECUTED BY WILLIAM H. BYERS UNDER CONTRACT NO. 456 SURVEYED OCTOBER 1882 SURVEY DATED JULY 28, 1883 (1126)

### BLM REFERENCES:

- (1986) BUREAU OF LAND MANAGEMENT RESURVEY AND NOTES FOR SECTION 12, T. 30 S., R. 9 W., W.M. AND SECTION 7, T. 30 S., R. 8 W., W.M. EXECUTED BY DALE T. BEDELL, WAYNE L. ROGERS, BOYD W. PETERSON AUGUST THROUGH NOVEMBER 1986 DEPENDENT RESURVEY DATED APRIL 7, 1989 (6260)
- (1993) BUREAU OF LAND MANAGEMENT RESURVEY AND NOTES FOR SECTION 4 AND 5, T. 30 S., R. 8 W., W.M. EXECUTED BY DALE T. BEDELL AND BRYAN S. SEIBOLD JULY 1989 THROUGH APRIL 1993 DEPENDENT RESURVEY DATED AUGUST 3, 1993 (6542)

### SURVEY REFERENCES:

- (1988) JOHNSTONE SURVEY MAP FILE M101-44 SECTION 12, T. 30 S., R. 9 W., W.M.
- (2003) RAMBO SURVEY MAP FILE M142-69 SECTION 12, T. 30 S., R. 9 W., W.M.
- (2013) EDWARDS SURVEY C.S. FILE 65/79-2 SECTION 4, T. 30 S., R. 8 W., W.M.

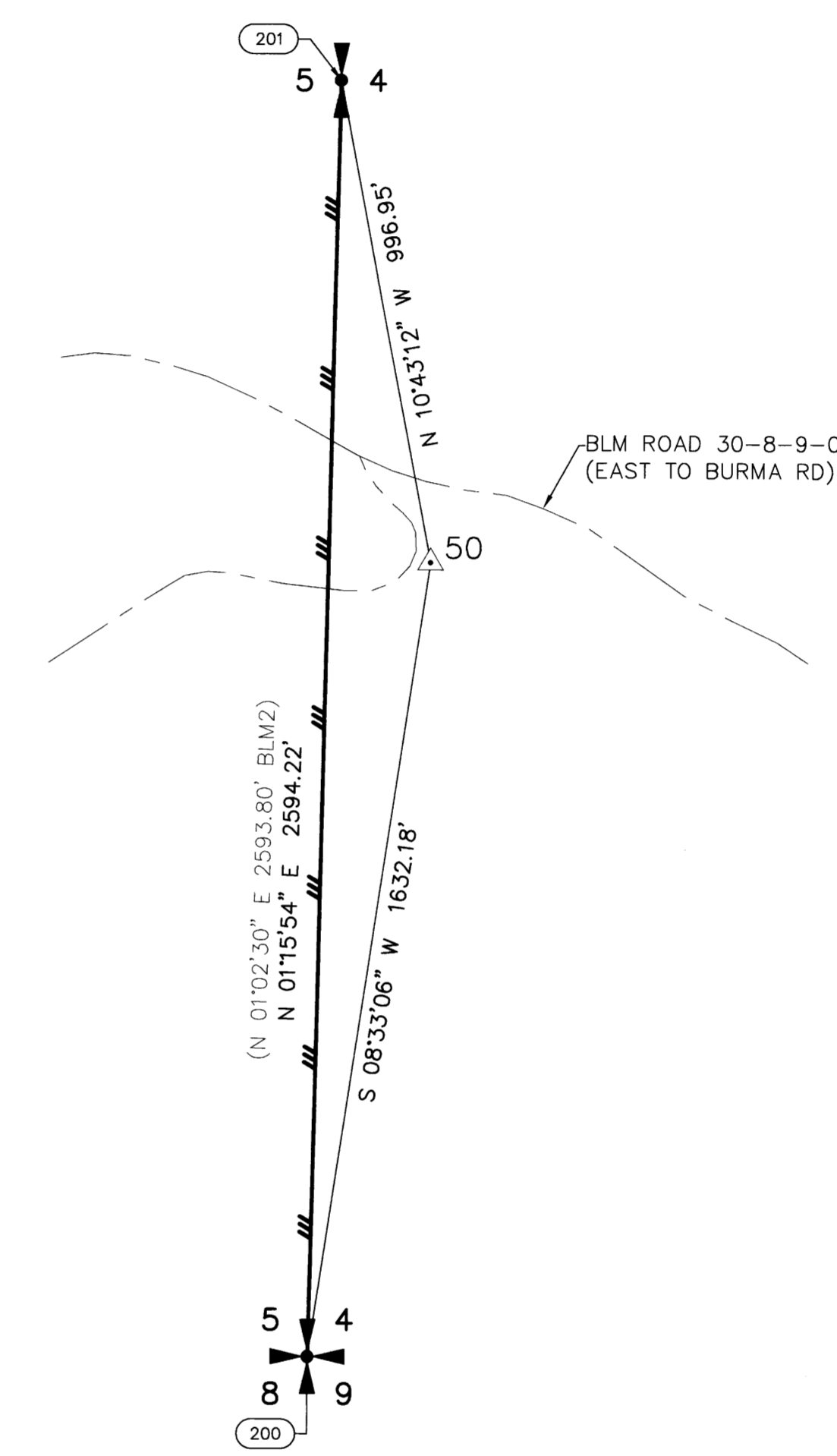
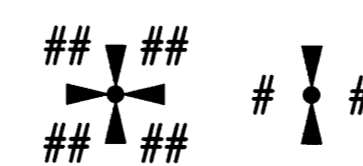
NOTE: SEE FOUND MONUMENT DETAILS AND STAMPING ON SHEET 3

FOUND MONUMENT TABLE			
POINT NO.	NORTHING	EASTING	DESCRIPTION
200	54506.22	76053.88	2-1/2" BRASS CAP
201	57099.80	76111.15	3-1/4" BRASS CAP
202	54320.97	65329.92	2-1/2" BRASS CAP
203	51684.36	65322.01	3-1/4" BRASS CAP
204	49047.20	65314.32	2-1/2" BRASS CAP

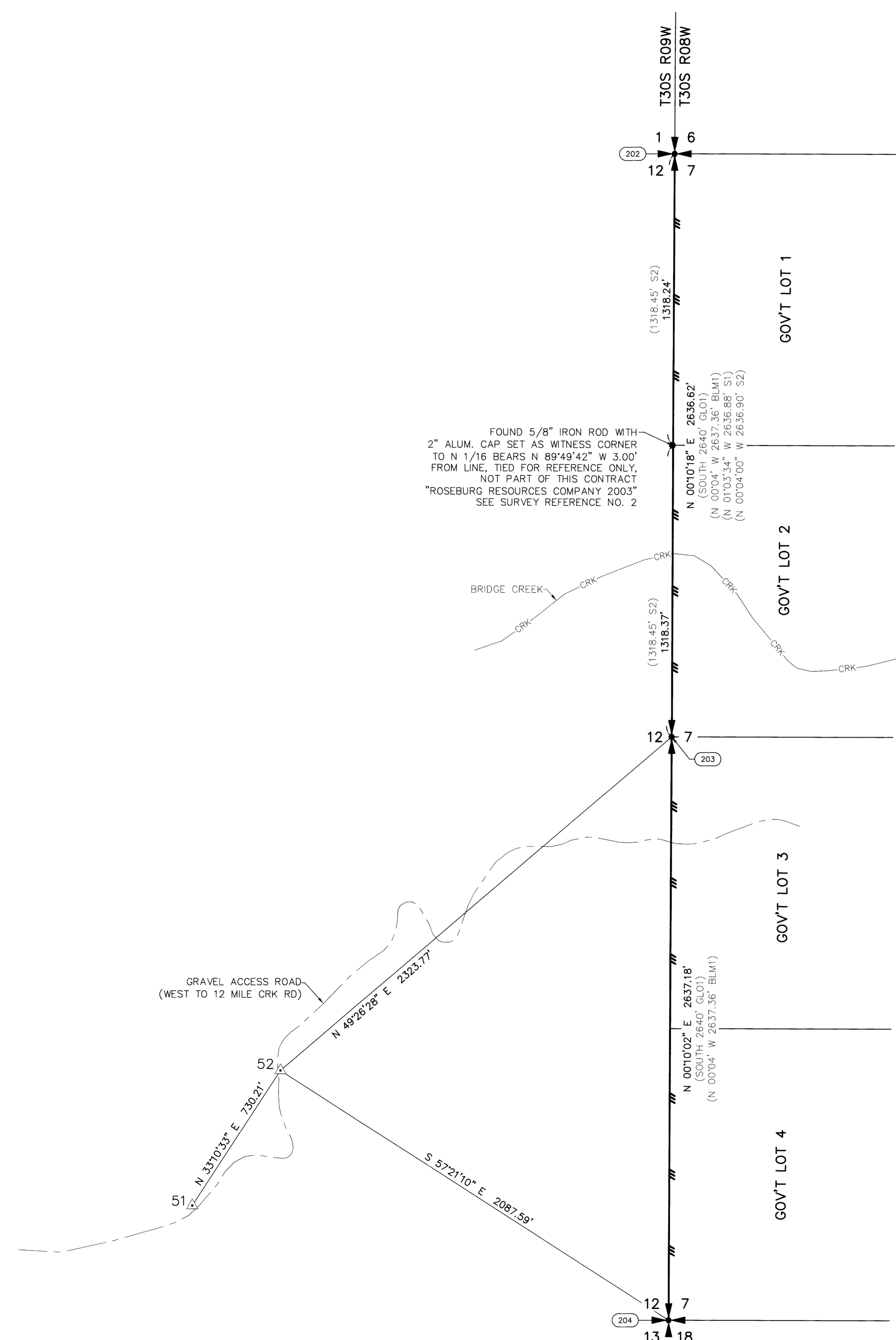
### LEGEND:

- INDICATES MONUMENT FOUND AS NOTED IN TABLES, SHEETS 3 & 4
- △ INDICATES MGS CONTROL POINT SEE CONTROL TABLE ON SHEET 1
- (S#) INDICATES RECORD DATA PER SURVEY REFERENCE NUMBER
- (GLO#) INDICATES RECORD DATA PER GENERAL LAND OFFICE REFERENCE NUMBER
- (BLM#) INDICATES RECORD DATA PER BUREAU OF LAND MANAGEMENT REFERENCE NUMBER
- T INDICATES TOWNSHIP
- R. INDICATES RANGE
- SEC. INDICATES SECTION
- BT INDICATES BEARING TREE
- CH INDICATES CHAINS (1 CHAIN=66 FEET)
- LKS INDICATES LINKS (1 LINK=0.66 FEET)
- W/ INDICATES WITH
- CONT. INDICATES CONTINUED
- MKD INDICATES MARKED
- ALUM. INDICATES ALUMINUM
- INDICATES BOUNDARY LINE, MARKED AND POSTED
- INDICATES SECTION SUBDIVISION
- CRK--- INDICATES CENTERLINE OF CREEK
- INDICATES CENTERLINE OF ROAD

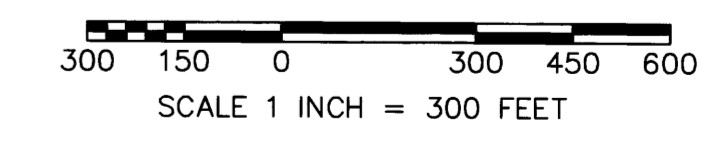
### PLSS CORNERS



FOUND 5/8" IRON ROD WITH 2" ALUM. CAP SET AS WITNESS CORNER TO N 1/16 BEARS N 89°49'42" W 3.00' FROM LINE, TIED FOR REFERENCE ONLY, NOT PART OF THIS CONTRACT "ROSEBURG RESOURCES COMPANY 2003" SEE SURVEY REFERENCE NO. 2



REGISTERED PROFESSIONAL LAND SURVEYOR  
 Daniel A. Renton  
 OREGON  
 JUNE 30, 1997  
 DANIEL A. RENTON  
 2830  
 Expires 12-31-2024



MINISTER-GLAESER SURVEYING INC.  
 2200 E. EVERGREEN BLVD.  
 VANCOUVER, WA 98661  
 (360) 694-3313

SCALE: 1"=300'  
 JOB NO. 22-319  
 DATE: 11/27/2023  
 CALC BY: DAR  
 DRAWN BY: RDH  
 CHECKED BY: DAR  
 SHEET 2 OF 4

200-FOUND MONUMENT

CORNER E-9, (GCDB 300600)
CORNER OF SECTIONS 4, 5, 8 & 9 T. 30 S., R. 08 W., W.M.

JULY 28, 1882
GLO SURVEY BY W.H. BYARS, DEPUTY SURVEYOR
UNDER CONTRACT NO. 456
(DSCO RECORDS VOLUME 17, PAGE 7351)
SET A POST 4 FT LONG, 4" SQUARE, 24" IN THE GROUND FOR THE CORNER TO SECTIONS 4, 5, 8 & 9, MARKED T 30S R8W S4 ON THE NE FACE, S9 ON THE SE FACE, S8 ON THE SW FACE AND S5 ON THE NW FACE, WITH 5 NOTCHES ON THE SOUTH AND 4 NOTCHES ON THE EAST EDGES, FROM WHICH:
A CEDAR, 26" DIA. BEARS N 20° E, 30 LKS, MKD: T30S R8W S4 BT
A FIR, 10" DIA. BEARS S 19° E, 22 LKS, MKD: T30S R8W S9 BT
A FIR, 12" DIA. BEARS S 74° W, 43 LKS, MKD: T30S R8W S8 BT
A FIR, 8" DIA. BEARS N 35° W, 36 LKS, MKD: T30S R8W S5 BT

SEPTEMBER 1964
DOUGLAS COUNTY SURVEYOR'S OFFICE
VERNON "RAY" TRACY, MIKE DARBY AND JACK BARNETT
(C.S. FILE 53/67-35)
FOUND 26", NOW 38" ORIG. CEDAR N 20° E 19.8 FT, OPENED & SHOWS "30S R8W S4" SCRIBED.
NO TRACE OF OTHER BT'S. CEDAR HAS FIRE SCARS.
SET BRASS CAP AT CORNER MKD:
COUNTY SURVEYORS OFFICE T30S R8W S5 S4 S8 S9 1964
NEW BT'S:

9" D.FIR N 07° W, 15.0 FT MKD: T30S R8W S5 CS BT
11" D.FIR N 43° E, 18.4 FT MKD: T30S R8W S4 CS BT
12" D.FIR S 40° E, 5.1 FT MKD: T30S R8W S9 CS BT
10" D.FIR, S 50° W, 7.8 FT MKD: T30S R8W S8 CS BT

JULY 1989 - APRIL 1993
BLM DEPENDENT RESURVEY BY DALE T. BEDELL & BRYAN S SEIBOLD, CADASTRAL SURVEYORS
UNDER GROUP NO. 1494
(DCSO RECORDS VOLUME 50, PAGE 19022-3)
THE CORNER OF SECTIONS 4, 5, 8 AND 9 PERPETUATED BY TRACY, IN 1964, MONUMENTED WITH AN IRON POST, 1-1/2" DIA, FIRMLY SET, PROJECTING 4" ABOVE GROUND, WITH BRASS CAP (PROPERLY) MARKED FROM WHICH THE REMAINING ORIGINAL BEARING TREE:
A CEDAR 45" DIA, BEARS N 20° E, 30 LKS, WITH HEALED BLAZE AND BEARING TREES MKD BY TRACY:
A FIR, 15" DIA, BEARS N 43° E, 27-1/2 LKS, WITH HEALED BLAZE
A FIR, 21" DIA, BEARS S 43-1/4° E, 7-1/2 LKS, WITH HEALED BLAZE
A FIR, 15" DIA, BEARS S 52-1/4° W, 12 LKS, WITH HEALED BLAZE
A FIR, 11" DIA, BEARS N 6-3/4° W, 24 LKS, WITH HEALED BLAZE
THE CORNER IS LOCATED 1.15 CHAINS NORTH OF DIRT ROAD, 20 LKS WIDE, BEARS N 50° E AND S 80° W LATITUDE 42°58'57.24" N LONGITUDE 123°39'39.44" W (NAD 1927)
FROM THIS POINT, THE BLM GEODETIC CONTROL STATION NO. EC41007, AT LATITUDE 42°58'03.492" N, LONGITUDE 123°39'36.870" W (NAD1927), DETERMINED BY THE NAVSTAR GPS, BEARS S 2°00'28" E, 82.497 CHAINS

FEBRUARY 2013
D. EDWARDS (C.S. FILE 65/79-2)
FOUND SECTION CORNER AS PER 1993 BLM RESURVEY

APRIL 2013 - FEBRUARY 2014
BLM RESURVEY BY GEORGE M. WINTER, CADASTRAL SURVEYOR
UNDER GROUP NO. 2698
(DCSO RECORDS VOLUME 58, PAGE 23156)
THE CORNER OF SECTIONS 4, 5, 8 AND 9, PERPETUATED BY THE DOUGLAS COUNTY SURVEYOR'S OFFICE IN 1964-65, MONUMENTED WITH AN IRON POST, 1-1/2" DIA., FIRMLY SET, PROJECTING 4" ABOVE GROUND, WITH BRASS CAP (PROPERLY) MARKED, FROM WHICH THE REMAINS OF AN ORIGINAL BEARING TREE:
A CEDAR, 47" DIA, BEARS N 20° E, 19.8 FT, WITH A HEALED BLAZE AND BT'S MARKED BY THE DOUGLAS COUNTY SURVEYOR'S OFFICE:
A FIR, 16" DIA, BEARS N 43° E, 18.1 FT, WITH HEALED BLAZE
A FIR, 25" DIA, BEARS S 43-1/4° E, 4.9 FT, WITH HEALED BLAZE
A FIR, 17" DIA, BEARS S 52-1/4° W, 7.9 FT, WITH HEALED BLAZE
A FIR, 11" DIA, BEARS N 6-3/4° W, 15.8 FT, WITH HEALED BLAZE
FROM THE CORNER:
WEST 34 FT, DIRT ROAD, 16 FT WIDE, BEARS N 10° E AND S 50° W, IN A CURVE
NAD 83(2011) LATITUDE: 42°58'56.66" N LONGITUDE: 123°39'43.67" W

APRIL 25, 2023
GARRETT FINCH AND CREW WITH MINISTER AND GLAESER SURVEYING
FOUND 2-1/2" COUNTY SURVEYORS OFFICE BRASS CAP ON PIPE, 0.4 FT ABOVE GROUND FROM WHICH:
A 29" FIR BEARS S 40° E, 5.2 FT WITH 2 HEALED BLAZES AND BT SIGNS (1964)
A 20" FIR BEARS S 52° W, 7.8 FT WITH HEALED BLAZE AND BT SIGN (1964)
AN 11" FIR SNAG BEARS N 01° W, 16.0 FT WITH HEALED BLAZE AND BT SIGN (1964)
A 19" FIR BEARS BEARS N 43° E, 18.5 FT WITH HEALED BLAZE AND BT SIGNS (1964)
A 51" CEDAR BEARS N 22° E, 20.4 FT WITH HEALED BLAZE AND BT SIGN (1882)
(SET CHAINING NAIL AT SIDE CENTER, BT SIGNS ON FRONT AND REAR, AND PAINTED RED BAND FOR EXISTING BT'S)

ESTABLISHED THE FOLLOWING:
AN 18" FIR BEARS N 54° W, 5.5 FT MKD "T30S R8W S5 BT"
(SET CHAINING NAIL AT SIDE CENTER, NAIL AND WASHER STAMPED "PLS 2830" AT BASE OF BLAZE, BT SIGNS ON FRONT AND BACK AND PAINTED RED BAND FOR NEW BT)

201-FOUND MONUMENT

CORNER C-9, (GCDB 300640)
1/4 CORNER OF SECTIONS 4 & 5 T. 30 S., R. 08 W., W.M.

JULY 28, 1882
GLO SURVEY BY W.H. BYARS, DEPUTY SURVEYOR
UNDER CONTRACT NO. 456
(DSCO RECORDS VOLUME 17, PAGE 7353)
SET A CEDAR POST 3 FT LONG, 3" SQUARE, 18" IN GROUND, FOR 1/4 SECTION CORNER MARKED 1/4 S ON WEST FACE FROM WHICH:
A CEDAR, 8" DIA. BEARS S 45° E, 19 LKS, MKD 1/4 S BT
A FIR, 50" DIA. BEARS S 80° W, 16 LKS, MKD 1/4 S BT

APRIL 8, 1965
DCSO, VRT - C.S. FILE 53/67-54
REPORTED AS NOT FOUND

JULY 1989 - APRIL 1993
BLM DEPENDENT RESURVEY BY DALE T. BEDELL & BRYAN S SEIBOLD, CADASTRAL SURVEYORS
UNDER GROUP NO. 1494
(DCSO RECORDS VOLUME 50, PAGE 19023-4)
POINT FOR THE 1/4 SECTION CORNER OF SECTIONS 4 & 5, AT PROPORTIONATE DISTANCE; THERE IS NO REMAINING EVIDENCE OF THE ORIGINAL CORNER.
SET A STAINLESS STEEL POST, 28" LONG, 2-1/2 DIA., 22" IN THE GROUND, WITH BRASS CAP MKD: T30S R8W 1/4 S5 S4 1990
FROM WHICH:
A HEMLOCK, 18" DIA. BEARS S 59-1/4° E, 31-1/2 LKS, MKD. 1/4 S4 BT
A G.FIR, 17" DIA. BEARS S 77-1/2° W, 27-1/2 LKS, MKD. 1/4 S5 BT

201 CONT.

MAY 10, 2023
AUGUST KARLSEN AND CREW WITH MINISTER AND GLAESER SURVEYING
FOUND 3-1/4" BLM BRASS CAP ON STEEL POST, 0.8 FT ABOVE GROUND FROM WHICH:
AN ALUMINUM POST WITH BLM BOUNDARY SIGN BEARS SOUTH 5 FT
AN 18" STUMP BEARS S 62° E, 20.8 FT MKD "1/4 S4 BT" (1989)
(SET CHAINING NAIL AT TOP CENTER OF STUMP, BT SIGN ON TOP, AND PAINTED RED BAND FOR EXISTING BT)

ESTABLISHED THE FOLLOWING:
A 6" HEMLOCK BEARS N 74° E, 6.3 FT MKD "1/4 S4 BT"
A 4" HEMLOCK BEARS S 22° W, 19.9 FT MKD "1/4 S5 BT"
(SET CHAINING NAIL AT SIDE CENTER, NAIL AND WASHER STAMPED "PLS 2830" AT BASE OF BLAZE, BT SIGNS ON FRONT AND BACK AND PAINTED RED BAND FOR NEW BT'S)

202-FOUND MONUMENT

CORNER E-1, (GCDB 100600)
CORNER OF SECTIONS 6 & 7 T. 30 S., R. 08 W., W.M.
AND SECTIONS 1 & 12 T. 30 S., R. 09 W., W.M.

APRIL 12, 1855
GLO SURVEY BY DENNIS HATHORN, DEPUTY SURVEYOR
UNDER CONTRACT NO. 57
(DSCO RECORDS VOLUME 17, PAGE 7369)
SET POST CORNER SECTIONS 1, 12, 6 AND 7, FROM WHICH:
A FIR 24" DIA. BEARS N 52° W, 24 LKS. DISTANCE
A FIR 24" DIA. BEARS S 55° W, 45 LKS. DISTANCE
A FIR 24" DIA. BEARS N 53° E, 25 LKS. DISTANCE
A FIR 9" DIA. BEARS S 45° E, 55 LKS. DISTANCE

JULY 28, 1882
GLO SURVEY BY W.H. BYARS, DEPUTY SURVEYOR
UNDER CONTRACT NO. 456
(DCSO RECORDS VOLUME 17, PAGE 7366)
FOUND AND USED

JULY 9, 1962
DOUGLAS COUNTY SURVEYOR'S OFFICE
JAMES BYRON, DEPUTY - S. BILOW, CREW
(C.S. FILE 49/100-2)
FOUND:

ORIGINAL 24" NOW 36" FIR SNAG, S 55° W, 29.7 FT, HAS GOOD BARK SCRIBING, "S12 T30S R9W"
ORIGINAL 9" NOW 26" W. FIR, S 45° E, 36.3 FT, GOOD BARK SCRIBING ABOVE AND GOOD SCAR BELOW
ORIGINAL 24" NOW 40" FIR, STUMP SHOWS GOOD SCAR NEAR BASE
ORIGINAL 24" NOW 36" FIR, N 53° E, 16.5 FT, NOW DOWN
SET BRASS CAP AT CORNER MKD: COUNTY SURVEYORS OFFICE T30S R9W S1 S12 S6 S7 R8W 1958
NEW BT'S:
9" W. FIR, S 8° W, 38.0 FT, SCRIBED S12 T30S R9W CS BT
8" W. FIR, S 67° E, 15.5 FT, SCRIBED S7 T30S R8W CS BT
8" W. FIR, N 25-1/2° E, 27.3 FT, SCRIBED S6 T30S R8W CS BT
16" W. FIR, N 36° W, 45.0 FT, SCRIBED S1 T30S R9W CS BT

AUGUST - NOVEMBER 1986
BLM DEPENDENT RESURVEY BY WAYNE L. ROGERS, DALE T. BEDELL & BOYD W. PETERSON
CADASTRAL SURVEYORS UNDER GROUP NO. 1339
(DCSO RECORDS VOLUME 48, PAGE 18357-58)
FOUND AND USED

NOVEMBER 1988
HOWARD W. JOHNSTONE
(MAP FILE M101-44)
FOUND 1958 COUNTY BCIP MARKED 1, 6, 7, 12
FROM WHICH:
A FIR, 30" DIA., BEARS N 36° W, 45.0 FT, HEALED
A FIR, 20" DIA., BEARS N 25-1/2° E, 27.3 FT, HEALED
A FIR, 36" DIA., BEARS S 45° E, 36.3 FT, BARK SCRIBED
A FIR, 20" DIA., BEARS S 67° E, 15.5 FT, HEALED
A FIR, 16" DIA., BEARS S 08° W, 38.0 FT, HEALED
(THE 1988 JOHNSTONE UTILIZATION IS NOT SHOWN ON THE DCSO CORNER RENEWAL)

MAY 2001
BLM RESURVEY BY A. BERT SKEESICK, CADASTRAL SURVEYOR
UNDER GROUP #1973
(DCSO RECORDS VOLUME 54, PAGE 20794)
BEGINNING AT THE CORNER OF SECTIONS 1, 6, 7 & 12 ON THE E BDY. OF THE TP., MONUMENTED WITH AN IRON POST, 1-1/2" DIA., FIRMLY SET, PROJECTING 18" ABOVE GROUND, WITH BRASS CAP (PROPERLY) MKD. FROM WHICH THE REMAINS OF THE ORIGINAL BEARING TREES:
A ROOT HOLE BEARS N 53° E, 16.5 FT, WITH DECAYED STUMP LYING NEARBY, NO VISIBLE MARKS
A BURNT SNAG, 35" DIA., BEARS S 45° E, 37.3 FT, WITH NO MARKS VISIBLE AND BEARING TREES MKD. BY BRYON:
A FIR, 20" DIA., BEARS N 25° E, 27.7 FT, WITH HEALED BLAZE
A FIR, 27" DIA., BEARS S 67° E, 15.8 FT, WITH HEALED BLAZE
A FIR, 22" DIA., BEARS S 6-1/2° W, 38.2 FT, WITH HEALED BLAZE (RECORD S 8° W)
A FIR, 31" DIA., BEARS N 38° W, 44.9 FT, WITH HEALED BLAZE (RECORD N 36° W)
FROM THIS POINT, THE BLM GEODETIC CONTROL STATION NO. EC 41304 DETERMINED BY THE NAVSTAR GPS, UTILIZING STATIC CARRIER PHASE RECEIVERS, (SEE CONTROL DATA SHEET ATTACHED TO THESE FIELD NOTES FOLLOWING THE GENERAL DESCRIPTION) BEARS S 53°35'53" E, 869.47 FT, (MEAN BEARING AND SEA LEVEL DISTANCE) MONUMENTED WITH AN ALUMINUM CAP, 3-1/4" DIA. FIRMLY SET FLUSH WITH GROUND, WITH TOP MKD. EC 41304 GPS 2001.

JULY 2003
FOUND OK BY T. RAMBO
(M142-69)

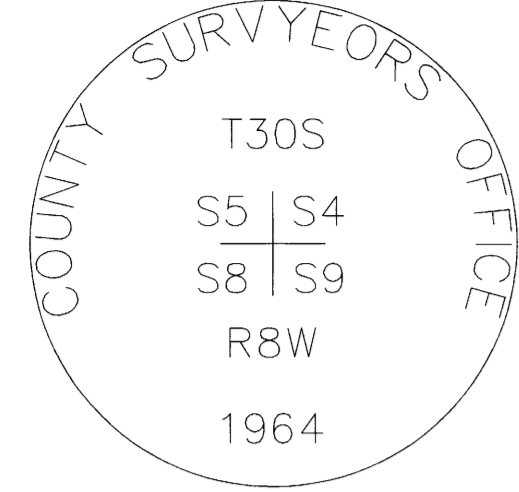
MAY 23, 2023
GARRETT FINCH AND CREW WITH MINISTER AND GLAESER SURVEYING
FOUND 2-1/2" BRASS CAP ON PIPE, 1.5 FT ABOVE GROUND FROM WHICH:
A 33" FIR BEARS S 67° E, 15.8 FT WITH HEALED BLAZE AND BT SIGN (1962)
A 17" ROTTED SNAG, BEARS S 45° E, 36.0 FT (1855)
A 24" FIR, DEAD, BEARS S 07° W, 38.2 FT WITH HEALED BLAZE AND BT SIGN (1962)
AN 18" SNAG BEARS N 25° E, 27.6 FT WITH HEALED BLAZE AND BT SIGN (1962)
A MOUND OF WOOD DEBRIS BEARS N 53° E, 16.5 FT (ONLY REMAINING EVIDENCE) (1855)
A ROOTHOLE BEARS N 38° W, 45 FT, TREE DOWN TO NORTH WITH BT SIGN (1962)
(SET CHAINING NAIL AT SIDE CENTER, BT SIGNS ON FRONT AND REAR, AND PAINTED RED BAND FOR EXISTING BT'S)

ESTABLISHED THE FOLLOWING:
A 6" FIR BEARS S 06° W, 18.2 FT MKD "T30S R9W S12 BT"
AN 8" FIR BEARS N 20° E, 29.8 FT MKD "T30S R8W S6 BT"
A 13" FIR BEARS N 10° W, 40.0 FT MKD "T30S R9W S1 BT"
(SET CHAINING NAIL AT SIDE CENTER, NAIL AND WASHER STAMPED "PLS 2830" AT BASE OF BLAZE, BT SIGNS ON FRONT AND BACK AND PAINTED RED BAND FOR NEW BT'S)

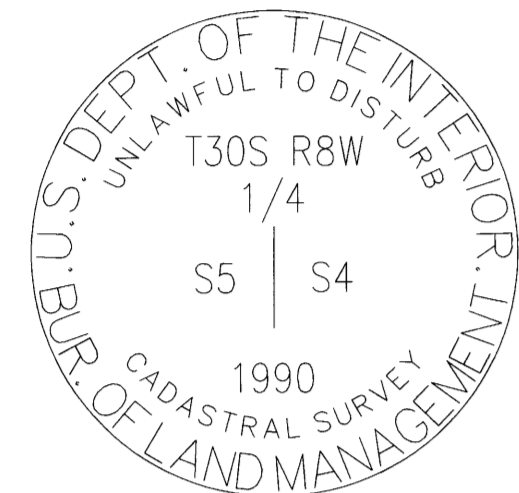
RECORD OF SURVEY

FILED
DATE: 12-4-2023 BY: 99
THIS SURVEY CONSISTS OF:
MAP: M118-73A-D
NARRATIVE:
CORNER RPT:
DOUGLAS COUNTY SURVEYOR

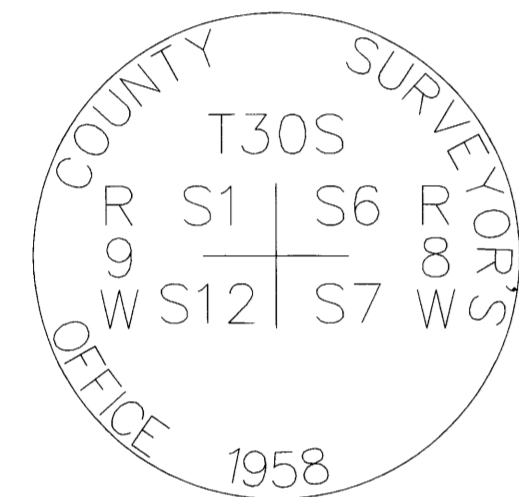
LOCATED IN A PORTION OF
THE SW 1/4 OF SECTION 4
THE SE 1/4 OF SECTION 5
GOV'T LOTS 1, 2, 3, 4 IN THE
THE NW 1/4 AND SW 1/4 OF SECTION 7
T. 30 S., R. 8 W., W.M.
THE NE 1/4 AND SE 1/4 OF SECTION 12
T. 30 S., R. 9 W., W.M.
BEETLE BATTLE NORTH-TASK C
DOUGLAS COUNTY, OREGON
CONTRACT NO. 1204T020D0010
TASK ORDER NO. 140L4322F0063



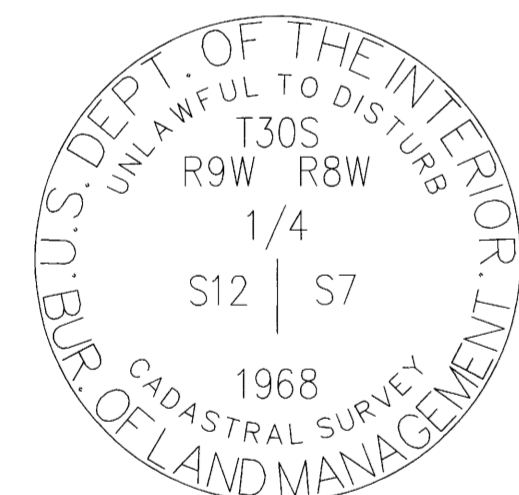
POINT NUMBER: 200



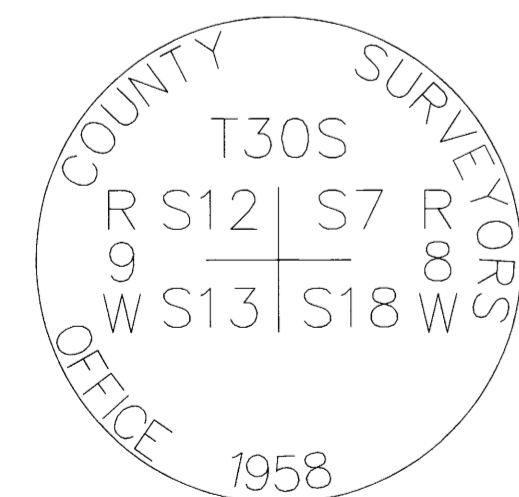
POINT NUMBER: 201



POINT NUMBER: 202



POINT NUMBER: 203



POINT NUMBER: 204

203-FOUND MONUMENT

CORNER G-1, (GCDB 100540)
1/4 CORNER OF SECTION 7 T. 30 S. R. 09 W., & SECTION 12 T. 30 S., R. 08 W., W.M.

APRIL 12, 1855
GLO SURVEY BY DENNIS HATHORN, DEPUTY SURVEYOR
UNDER CONTRACT #57
(DCSO RECORD VOLUME 17, PAGE 7370)
SET 1/4 SECTION POST, FROM WHICH:
A CHINQUAPIN 9" DIA., BEARS S 60° W, 10 LKS. DIST.
A CHINQUAPIN 6" DIA., BEARS S 65° E, 26 LKS. DIST.

AUGUST - NOVEMBER 1986
BLM RESURVEY BY WAYNE L. ROGERS, DALE T. BEDELL & BOYD W. PETERSON, CADASTRAL SURVEYORS
UNDER GROUP #1339
POINT FOR THE 1/4 CORNER, AT PROPORTIONATE DISTANCE; THERE IS NO REMAINING EVIDENCE OF THE ORIGINAL CORNER.
SET A STAINLESS STEEL POST, 28" LONG, 2-1/2" DIA., 22" IN THE GROUND, WITH BRASS CAP MKD: "T30S R9W R8W 1/4 S12 S7 1986" FROM WHICH:
A FIR 14" DIA., BEARS N 60° E, 31-1/2 LKS. DIST. MKD. 1/4 S7 BT
A FIR 12" DIA., BEARS N 12° W, 8-1/2 LKS. DIST. MKD. 1/4 S12 BT
DEPOSIT WHITE "DEEP-1" MAGNETIC MARKED AT BASE OF STAINLESS STEEL POST

NOVEMBER 1988
SURVEY BY HOWARD W. JOHNSTONE, LS #498 - FOR: ROSEBURG RESOURCES
(M 101-44)
CORNER REPORT ONLY, FOUND:
1988 CADASTRAL BRASS CAP/IRON PIPE MKD: 1/4 S12 S7
10" FIR N 12° W, 5.6 FT, SCRIBE VISIBLE
12" FIR N 60° E, 20.8 FT, SCRIBE VISIBLE
(AT THE TIME OF THIS REPORT, THE ABOVE BLM SURVEY HAD NOT BEEN PUT ON FILE WITH THE DCSO)

MAY - JULY 2003
TROY RAMBO FOR ROSEBURG RESOURCES
(M142-69)
FOUND 13" DF WITH HEALED FACE - BEARS N 12° W, 8-1/2 LKS
FOUND 14" DF WITH HEALED FACE - BEARS N 60° E, 31-1/2 LKS
SCRIBED "1/4 S12 BT" ON AN 11" DF - BEARS S 59° W, 3.4 FT
SCRIBED "1/4 S7 BT" ON AN 8" DF - BEARS S 5° E, 13.1 FT
ALL NEW BT'S WERE MEASURED TO A 6" SPIKE AT SIDE CENTER BASE. BEARINGS WERE MEASURED WITH A HAND COMPASS WITH DECL. OF 17° E

MAY 17, 2023
AUGUST KARLSEN AND CREW WITH MINISTER AND GLAESER SURVEYING
FOUND 3-1/4" BLM BRASS CAP ON PIPE, 0.6 FT ABOVE GROUND FROM WHICH:
AN ALUMINUM POST WITH BLM BOUNDARY SIGN BEARS NORTH 6 FT
AN ALUMINUM POST WITH BLM BOUNDARY SIGN BEARS SOUTH 6 FT
A 14" FIR BEARS S 54° W, 3.5 FT WITH HEALED BLAZE AND BT SIGN (2003)
A 17" FIR BEARS N 16° W, 5.9 FT WITH HEALED BLAZE AND BT SIGNS (1988)
A 16" FIR BEARS N 54° E, 20.5 FT WITH HEALED BLAZE AND BT SIGNS (1986)
A 9-1/2" FIR BEARS S 06° E, 13.3 FT WITH HEALED BLAZE AND BT SIGNS (2003)
(SET CHAINING NAIL AT SIDE CENTER, BT SIGNS ON FRONT AND REAR, AND PAINTED RED BAND FOR EXISTING BT'S)



SCALE: N/A
JOB NO. 22-319
DATE: 11/27/2023
CALC BY: DAR
DRAWN BY: RDH
CHECKED BY: DAR
SHEET 3 OF 4

**204—FOUND MONUMENT**

CORNER J—25, (GCDB 700500)  
 CORNER OF SECTIONS 12 & 13 T. 30 S., R. 09 W., W.M.  
 AND SECTIONS 7 & 18 T. 30 S., R. 08 W., W.M.

APRIL 12, 1855  
 GLO SURVEY BY DENNIS HATHORN, DEPUTY SURVEYOR  
 UNDER CONTRACT #57  
 (DCSO RECORDS VOLUME 17, PAGE 7370)  
 SET POST CORNER SECTIONS 7, 18, 12 & 13, FROM WHICH:  
 A PINE 20" DIA., BEARS N 12' W, 29 LKS. DIST.  
 A FIR 18" DIA., BEARS N 45' E, 50 LKS. DIST.  
 A FIR 20" DIA., BEARS S 48' E, 114 LKS. DIST.  
 A CHINQUAPIN 12" DIA., BEARS S 68' W, 14 LKS. DIST.

JULY 9, 1958  
 DOUGLAS COUNTY SURVEYOR'S OFFICE  
 JAMES W. BYRON, DEPUTY SURVEYOR AND S. BILOW, CREW  
 (C.S. FILE 49/100-3)  
 FOUND:

ORIGINAL 20" NOW 24" PINE STUMP, N 12' W, 19.1 FT, OPENED AND FOUND GOOD SCRIBE "BT"  
 ORIGINAL 18" NOW 28" W. FIR SNAG HAS GOOD BARK SCRIBING, N 45' E, 33.0 FT  
 ORIGINAL 20" NOW 30" R. FIR, HAS GOOD BARK SCRIBING  
 NO TRACE OF ORIGINAL SW BT  
 SET BRASS CAP AT CORNER MKD:  
 "COUNTY SURVEYORS OFFICE T30S R9W S12 S13 S7 S18 R8W 1958  
 NEW BT'S:  
 8" R. FIR BEARS N 89' W, 9.4 FT, SCRIBED S12 T30S R9W CS BT  
 9" CHINQUAPIN S 43' W, 35.6 FT, SCRIBED S13 T30S R9W CS BT  
 10" R. FIR BEARS S 30' E, 9.9 FT, SCRIBED S18 T30S R8W CS BT  
 4" W. FIR BEARS N 73' E, 28.7 FT, SCRIBED S7 CS BT

AUGUST 1964  
 DOUGLAS COUNTY SURVEYORS OFFICE  
 VERNON "RAY" TRACY AND CREW  
 (C.S. FILE 53/53-54)  
 FOUND BRASS CAP AND 3 BT'S AS RECORDED BY BYRON IN 1958, NW BT DOWN  
 NEW BT 12" W. FIR N 71' W, 54.6 FT, MKD. T30S R9W S12 CS BT

AUGUST — NOVEMBER 1986  
 BLM RESURVEY BY WAYNE L. ROGERS, DALE T. BEDELL, BOYD W. PETERSON, CADASTRAL SURVEYOR'S  
 UNDER GROUP #1339  
 (DCSO RECORDS VOLUME 48, PAGE 18356)  
 THE SECTION CORNER PERPETUATED AND RECORDED BY BYRON IN 1958, AND FURTHER PERPETUATED  
 AND RECORDED BY TRACY IN 1964, MONUMENTED WITH AN IRON POST 1-1/2" DIA., FIRMLY SET,  
 PROJECTING 15" ABOVE GROUND WITH BRASS CAP MKD. IN 1958 FROM WHICH THE REMAINS OF THE  
 ORIGINAL BEARING TREES:  
 A FIR STUMP 40" DIA., BEARS S 48' E, 117 LKS. DIST. WITH HEALED BLAZE (REC. 114 LKS.)  
 A ROTTED PINE STUMP 15" DIA., BEARS N 12' W, 30 LKS. DIST. WITH SCRIBE MARKS BT VISIBLE ON A  
 ROTTED BLAZE (REC. 29 LKS.)  
 A ROTTED FIR STUMP SIDE INDETERMINATE, BEARS N 45' E, 50 LKS. DIST., NO MARKS REMAINING  
 AND THE REMAINS OF THE BEARING TREES MKD. BY BYRON:  
 A FIR 12" DIA., BEARS N 73' E, 44 LKS. DIST., WITH HEALED BLAZE  
 A FIR 16" DIA., BEARS S 30' E, 18 LKS. DIST., WITH HEALED BLAZE  
 A CHINQUAPIN 13" DIA., BEARS S 43' W, 54 LKS. DIST., WITH A ROTTED BLAZE  
 A ROOT HOLE BEARS N 89' W, 14 LKS. DIST., WITH A DOWNED FIR, 9" DIA., LYING ALONGSIDE, WITH  
 SCRIBED MARKS R9W CS VISIBLE ON A ROTTED BLAZE  
 AND A BEARING TREE MARKED BY TRACY:  
 A FIR 21" DIA., BEARS N 71' W, 83 LKS. DIST. WITH TWO HEALED BLAZES  
 A NEW BEARING TREE:  
 A FIR 4" DIA., BEARS N 22' W, 22 LKS. DIST. MKD. X BT

JULY — AUGUST 2002  
 BLM RESURVEY BY A. BERT SKEESICK, CADASTRAL SURVEYOR  
 UNDER GROUP #2009  
 (DCSO RECORDS VOLUME 54, PAGE 21066-7)  
 THE CORNER OF SECTIONS 7, 12, 13 & 18, ON THE E BDY. OF THE TP., MONUMENTED WITH AN IRON  
 POST, 1-1/2" DIA., FIRMLY SET, PROJECTING 15" ABOVE GROUND, WITH BRASS CAP (PROPERLY) MKD.  
 FROM WHICH THE REMAINS OF THE ORIGINAL BEARING TREES:  
 A DECAYED STUMP, SIZE AND SPECIES INDETERMINATE, BEARS N 45' E, 35.3 FT, WITH HEALED BLAZE  
 (RECORD FIR, 33.0 FT)  
 A DECAYED STUMP, SIZE AND SPECIES INDETERMINATE, BEARS S 48' E, 77.2 FT, WITH HEALED BLAZE  
 (RECORD FIR)  
 A DECAYED STUMP, SIZE AND SPECIES INDETERMINATE, BEARS N 12' W, 19.8 FT, WITH SCRIBE MARKS  
 BT VISIBLE ON DECAYED BLAZE (RECORD, PINE)  
 AND REMAINS OF THE BT'S MKD. BY BYRON IN 1958, AND REPORTED BY BEDELL, ROGERS, AND  
 PETERSON:  
 A DECAYED SNAG, 11" DIA., SPECIES INDETERMINATE, BEARS N 73' E, 29.0 FT., WITH HEALED BLAZE  
 (RECORD, FIR)  
 A FIR 19" DIA. BEARS S 30' E, 10.6 FT., WITH HEALED DOUBLE BLAZE  
 A DEAD CHINQUAPIN, 11" DIA., BEARS S 43' W, 35.6 FT., WITH DECAYED BLAZE  
 A ROOTHOLE BEARS N 89' W, 9.2 FT, WITH FALLEN TRUNK, SIZE AND SPECIES INDETERMINATE, LYING  
 ALONGSIDE, NO MARKS VISIBLE (RECORD, FIR)  
 AND BT MKD. BY TRACY IN 1964 AND REPORTED BY BEDELL, ROGERS AND PETERSON:  
 A FIR 19" DIA., BEARS N 71' W, 54.8 FT., WITH HEALED DOUBLE BLAZE  
 AND BEARING TREE MKD. BY BEDELL, ROGERS AND PETERSON:  
 A FIR 8" DIA., BEARS N 22' W, 14.5 FT, WITH HEALED BLAZE  
 AND NEW BEARING TREE:  
 A FIR 10" DIA., BEARS N 33' E, 28.0 FT. MKD. T30S R8W S7 BT  
 EACH NEW BEARING TREE HAS A 2-1/2"x1/4" MAGNETIC NAIL (MAG NAIL) DRIVEN AT THE BASE  
 RIGHT SIDE CENTER, UNLESS OTHERWISE DESCRIBED IN THE CORNER DESCRIPTION

APRIL 24, 2007  
 DCSO-GIS CORNER VISITATION (TYPED FEBRUARY 9, 2011)  
 (C.S. FILE 67/33-1)  
 MONUMENT — 2.5" BC  
 COMMENT — OK; 3 LIVE BT'S, 1 SNAG

MAY 17, 2023  
 AUGUST KARLSEN AND CREW WITH MINISTER AND GLAESER SURVEYING  
 FOUND 2-1/2" COUNTY SURVEYORS OFFICE BRASS CAP ON PIPE, 15" ABOVE GROUND FROM WHICH:  
 A POST WITH BLM BOUNDARY SIGN BEARS NORTH 6 FT  
 A 20" FIR BEARS N 73' W, 54.6 FT WITH HEALED BLAZE AND BT SIGNS (1964)  
 AN 18" STUMP BEARS N 17' W, 19.8 FT WITH SCRIBE REMAINS "BT" (1855)  
 A 10" FIR BEARS N 26' W, 14.4 FT WITH HEALED BLAZE AND BT SIGNS (1986)  
 A 26" FIR BEARS S 34' E, 10.4 FT WITH HEALED BLAZE AND BT SIGNS (1958)  
 AN 11" CHINQUAPIN BEARS S 42' W, 35.1 FT WITH PARTIAL HEALED BLAZE AND BT SIGNS (1958)  
 AN 18" ROTTED STUMP BEARS N 49' E, 33.1 FT (1855)  
 A STUMP, SIZE AND SPECIES INDETERMINATE, BEARS S 47' E, 76.5 FT (1855)  
 A MOUND OF WOOD DEBRIS BEARS N 89' W, 9.2 FT (ONLY REMAINING EVIDENCE) (1958)  
 (SET CHAINING NAIL AT SIDE CENTER, BT SIGNS ON FRONT AND REAR, AND PAINTED RED BAND FOR  
 EXISTING BT'S)

ESTABLISHED THE FOLLOWING:  
 A 16" FIR BEARS S 33' W, 31.0 FT MKD "T30S R9W S13 BT"  
 A 15" FIR BEARS N 52' E, 64.6 FT MKD "T30S R8W S7 BT"  
 (SET CHAINING NAIL AT SIDE CENTER, NAIL AND WASHER STAMPED "PLS 2830" AT BASE OF BLAZE,  
 BT SIGNS ON FRONT AND BACK AND PAINTED RED BAND FOR NEW BT'S)

**RECORD OF SURVEY**

FILED  
 DATE: 11-27-2023 BY: [Signature]  
 THIS SURVEY CONSISTS OF:  
 MAP: M178-73 A-D  
 NARRATIVE:  
 CORNER RPT:  
 DOUGLAS COUNTY  
 SURVEYOR

LOCATED IN A PORTION OF  
 THE SW 1/4 OF SECTION 4  
 THE SE 1/4 OF SECTION 5  
 GOV'T LOTS 1, 2, 3, 4 IN THE  
 THE NW 1/4 AND SW 1/4 OF SECTION 7  
 T. 30 S., R. 8 W., W.M.  
 THE NE 1/4 AND SE 1/4 OF SECTION 12  
 T. 30 S., R. 9 W., W.M.  
 BEETLE BATTLE NORTH—TASK C  
 DOUGLAS COUNTY, OREGON  
 CONTRACT NO. 1204T020D0010  
 TASK ORDER NO. 140L4322F0063

11/27/2023  
 REGISTERED  
 PROFESSIONAL  
 LAND SURVEYOR  
 [Signature]  
 OREGON  
 JUNE 30, 1997  
 DANIEL A. RENTON  
 2830  
 Expires 12-31-2024

SCALE: N/A  
 JOB NO. 22-319  
 DATE: 11/27/2023  
 CALC BY: DAR  
 DRAWN BY: RDH  
 CHECKED BY: DAR  
 SHEET 4 OF 4

MINISTER—GLAESER  
 SURVEYING INC.  
 2200 E. EVERGREEN BLVD.  
 VANCOUVER, WA 98661  
 (360) 694-3313