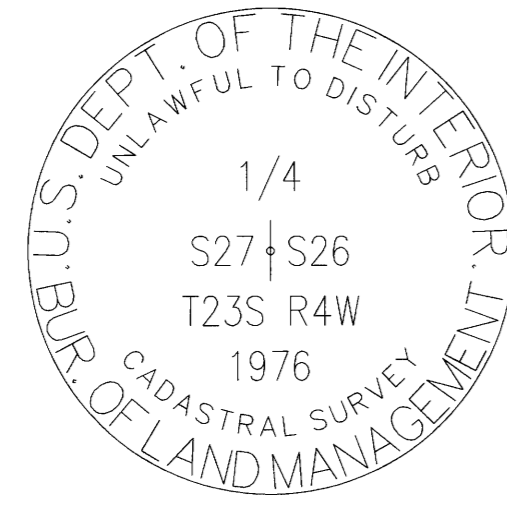
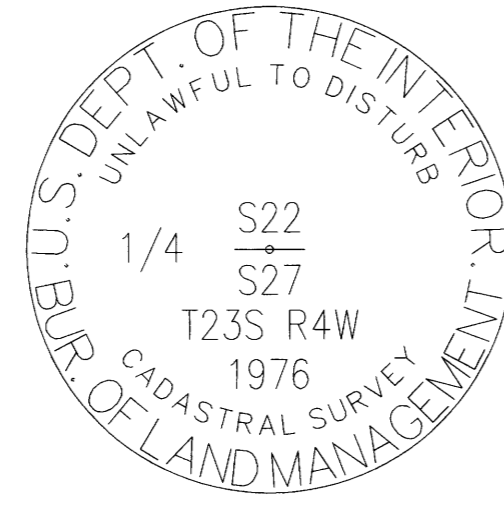


POINT NUMBER: 100



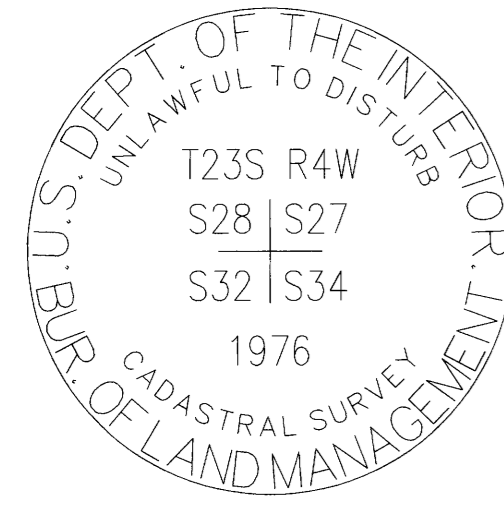
POINT NUMBER: 101



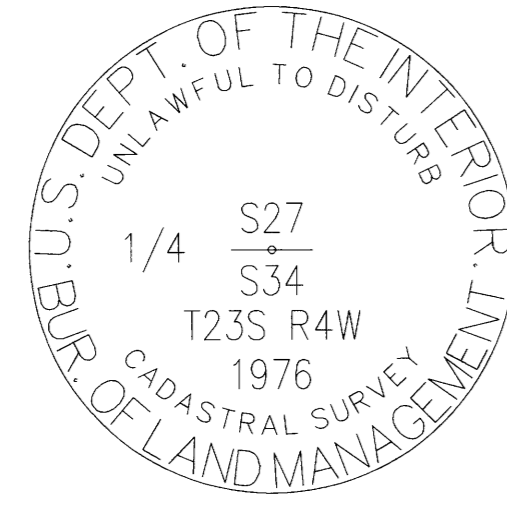
POINT NUMBER: 102



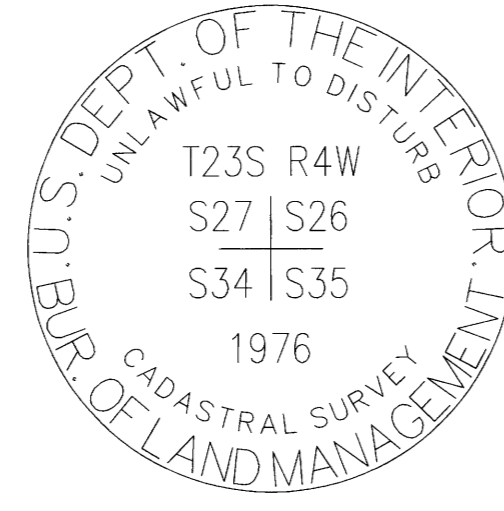
POINT NUMBER: 103



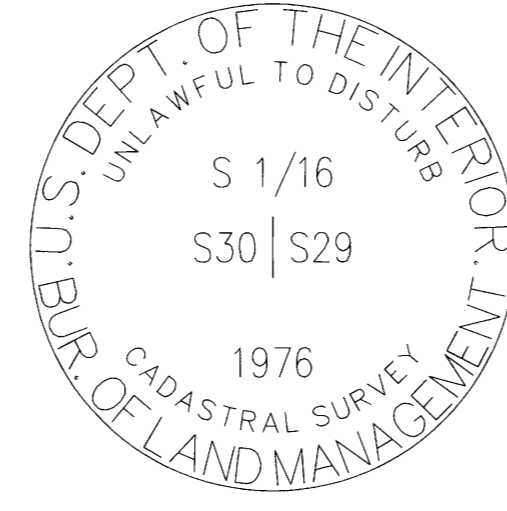
POINT NUMBER: 104



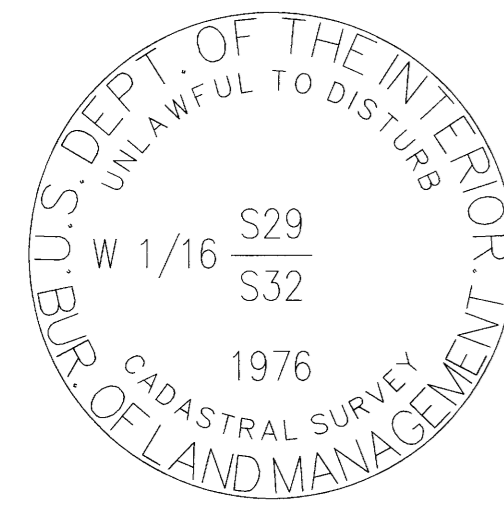
POINT NUMBER: 105



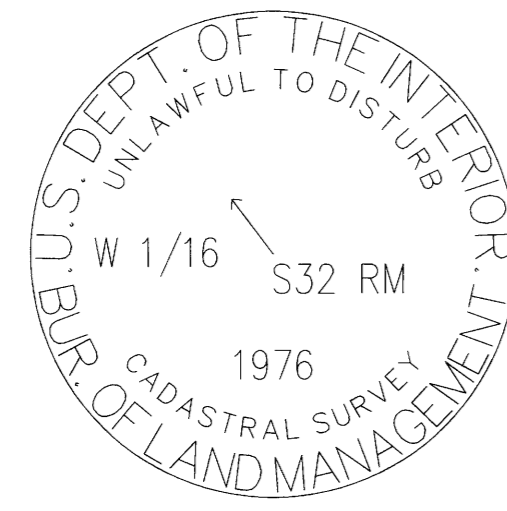
POINT NUMBER: 106



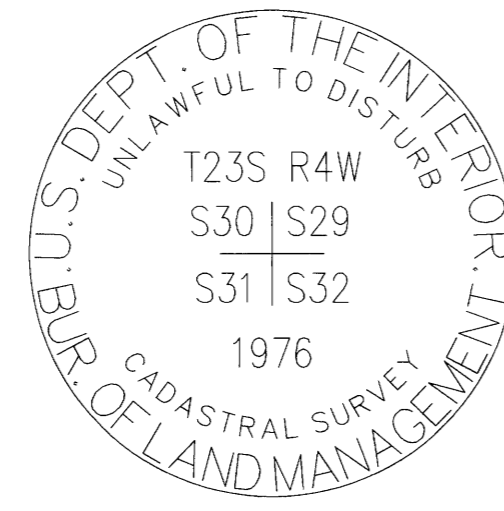
POINT NUMBER: 107



POINT NUMBER: 108



POINT NUMBER: 109



POINT NUMBER: 110

REGISTERED PROFESSIONAL LAND SURVEYOR Daniel A. Renton OREGON JUNE 30, 1997 DANIEL A. RENTON 2830 Expires 12-31-2024

100-FOUND MONUMENT

CORNER R-17, (GCDB 500300) CORNER SECTIONS 22, 23, 26 & 27 T. 23 S., R. 04 W., W.M.

AUGUST 27, 1884 WILLIAM P. WRIGHT, DEPUTY SURVEYOR UNDER CONTRACT NO. 514 (DCSO RECORDS VOLUME 6, PAGE 2307) SET POST 6" DIA., 4 FT LONG, WITH MARKED STONE 12" IN GROUND FOR SECTION CORNER MKD: T23 S23 ON NE, R4W S26 ON SE, S27 ON SW, S22 ON NW FACE WITH 2 NOTCHES ON E & S EDGES FROM WHICH: A FIR, 60" DIA. BEARS S 25' E, 92 LKS, MKD: T23S R4W S26 BT A FIR, 6" DIA. BEARS S 17' W, 25 LKS, MKD: T23S R4W S27 BT A FIR, 5" DIA. BEARS N 45' W, 40 LKS, MKD: T23S R4W S22 BT A CEDAR, 4" DIA. BEARS N 79' E, 11 LKS, MKD: T23S R4W S23 BT

APPROX. 1960 (FILED DECEMBER 1965) WILFORD N. HAINES (C.S. FILE 54/16-231) FOUND: 60" FIR, S 25' E, 92 LKS 6" FIR STUB, S 17' W, 25 LKS, SCRIBING VISIBLE ON STUB SCRIBED: 14" FIR, N 60' W, 50.0 FT 36" FIR, S 89' W, 44.5 FT 60" FIR, S 25' E, 60.72 FT, BARK SCRIBED

NOVEMBER 1965 DOUGLAS COUNTY SURVEYORS OFFICE VERNON "RAY" TRACY & CREW (C.S. FILE 54/16-18) FOUND HAINES' "T" IRON AND 3/4" IRON PIPE AND FOLLOWING BT'S: 64" D.FIR SNAG, S 25' E, 60.8 FT (FACE) BARK SCRIBED "T23S R4W S26 BT 363" THIS POSSIBLE ORIGINAL BT 21" D.FIR, N 59' W, 49.6 FT (FACE) BARK SCRIBED "363 T23S R4W S22 BT" AND CRUISERS MARKS ON FACE THIS CORNER FITS CALLS SOUTH & WEST. WE FOUND NO ORIGINAL SCRIBE

SEPTEMBER 1966 DOUGLAS COUNTY SURVEYORS OFFICE VERNON "RAY" TRACY & JACK HERITAGE (C.S. FILE 54/16-45) FOUND: HAINES' "T" IRON & 3/4" IRON PIPE AT CORNER ORIGINAL 60" NOW 64" FIR, S 25' E, 60.7 FT, RE-BARK SCRIBED, NOW SNAG 14" NOW 20" D.FIR, N 60' W, 50.0 FT, BARK SCRIBED, BUTTON ON FACE 36" NOW STUMP, S 89' W, 44.5 FT, BARK SCRIBED NEW BT'S: 8" HEMLOCK N 35' W, 22.8 FT, MKD "T23S R4W S22 CS BT" 14" HEMLOCK N 14' E, 44.1 FT, MKD "T23S R4W S26 CS BT" 9" HEMLOCK S 62' E, 63.7 FT, MKD "T23S R4W S26 CS BT" DID NOT SET BRASS CAP - CORNER LIES IN CORNER OF CUT OFF UNIT IN SECTION 27.

JUNE THROUGH SEPTEMBER 1976 BLM RESURVEY BY JAMES E. JELLEY, CADASTRAL SURVEYOR UNDER GROUP NO. 895 (DCSO RECORDS VOLUME 41, PAGE 16138-39) FROM SECTION CORNER PERPETUATED AND RECORDED BY HAINES IN 1960 AND FURTHER PERPETUATED BY TRACY IN 1966, MONUMENTED WITH A 1" "T" SHAPED IRON ROD, FIRMLY SET, PROJECTING 10" ABOVE GROUND, FROM WHICH THE REMAINS OF THE OBTS: A FIR SNAG, 65" DIA. BEARS S 25' E, 96 LKS, RE-SCRIBE "T23S R4W S2 BT 363" ON BARK BLAZE BY HAINES IN 1960 (REC. 92 LKS, TO FACE) AND THE REMAINS OF BEARING TREES MKD BY HAINES: A SAWED FIR STUMP, 36" DIA. BEARS S 89' W, 67 LKS, WITH SCRIBE MARKS "63 BT" VISIBLE ON BARK BLAZE A FIR, 24" DIA BEARS N 60' W, 77 LKS, WITH SCRIBE MARKS T23S R4W S22 BT VISIBLE ON BARK BLAZE AND BT'S MKD BY TRACY: A HEMLOCK, 20" DIA. BEARS N 12-3/4' E, 67 LKS, WITH HEALED BLAZE A HEMLOCK 10" DIA. BEARS S 63-1/2' E, 96 LKS, WITH FRAGMENTARY SCRIBE VISIBLE ON OPEN BLAZE A HEMLOCK 12" DIA. BEARS N 36-1/2' W, 34-1/2 LKS, WITH SCRIBE MARKS "T23S R S CS BT" VISIBLE ON OPEN BLAZE

AT THE CORNER POINT: SET AN IRON POST, 28" LONG, 2-1/2" DIA., 24" IN GROUND, WITH BRASS CAP MKD: "T23S R4W S22 S23 S27 S26 1976" FROM WHICH NEW BT: A FIR, 8" DIA. BEARS S 59' W, 122-1/2 LKS, MKD "T23S R4W S27 BT" RESET "T" SHAPED IRON ALONGSIDE IRON POST

NOVEMBER 1981 TO APRIL 1982 BLM RESURVEY BY JAMES E. JELLEY, CADASTRAL SURVEYOR UNDER GROUP NO. 1083 (DCSO RECORDS VOLUME 46, PAGE 17542-43) FOUND AND USED ON ABOVE REFERENCED SURVEY

JANUARY 17, 2023 GARRETT FINCH AND CREW WITH MINISTER AND GLAESER SURVEYING FOUND 3-1/4" BLM BRASS CAP, 0.4 FT ABOVE GROUND IN GOOD CONDITION WITH 3/4" IRON PIPE AND HAINES 1" BRASS CAP SOUTH OF AND ALONG SIDE FROM WHICH: 29" FIR SNAG (30 FT HIGH) BEARS N 61' W, 50.0 FT, ILLEGIBLE BARK SCRIBE WITH BT SIGN (1960) 28" FIR BEARS S 60' W, 82.4 FT TO SIDE CENTER, WITH SCABBED BLAZE (1976) 23" HEMLOCK BEARS N 36' W, 22.8 FT TO SIDE CENTER, SCABBED BLAZE WITH BT SIGN (1966) 26" HEMLOCK BEARS N 14' E, 44.0 FT TO SIDE CENTER, SCABBED BLAZE WITH BT SIGN (1966) 24" HEMLOCK BEARS S 64' E, 62.8 FT TO SIDE CENTER, SCABBED BLAZE WITH BT SIGN (1966) 36" STUMP (3 FT HIGH) BEARS S 88' W, 44.5 FT TO CENTER OF STUMP (1960) 65" STUMP (3 FT HIGH) BEARS S 22' E, 60.7 FT TO CENTER OF STUMP, WITH ILLEGIBLE SCRIBE AND CRUISER MARKS (1960) (SET CHAINING NAIL AT SIDE CENTER, BT SIGNS ON FRONT AND REAR, AND PAINTED RED BAND FOR EXISTING BT'S)

101-FOUND MONUMENT

CORNER T-17, (GCDB 500240) 1/4 CORNER OF SECTIONS 26 & 27 T. 23 S., R. 04 W., W.M.

AUGUST 27, 1884 WILLIAM P. WRIGHT, DEPUTY SURVEYOR UNDER CONTRACT NO. 514 (DCSO RECORDS VOLUME 6, PAGE 2307) SET POST 4" DIA., 4 FT LONG, WITH MARKED STONE 12" IN GROUND FOR 1/4 CORNER MKD 1/4 S ON W FACE, FROM WHICH: A FIR, 24" DIA. BEARS N 85' W, 42 LKS, MKD "1/4 S BT" A FIR, 40" DIA. BEARS S 45' E, 3 LKS MKD "1/4 S BT"

RECORD OF SURVEY

LOCATED IN A PORTION OF THE NW 1/4, NE 1/4 AND SE 1/4 OF SECTION 27 AND THE SW 1/4 OF SECTION 29 T. 23 S., R. 4 W., W.M. GREAT EXPECTATIONS AND FAST LANE-TASK B DOUGLAS COUNTY, OREGON CONTRACT NO. 1204T02DD0010 TASK ORDER NO. 140L4322F0063

FILED DATE: 11-30-2023 BY: [Signature] THIS SURVEY CONSISTS OF: MAP: M17B-72 A-F NARRATIVE: CORNER RPT: DOUGLAS COUNTY SURVEYOR

101 CONT.

APPROX. 1960 (FILED DECEMBER 1965) WILFORD N. HAINES (C.S. FILE 54/16-23) FOUND: 24" FIR N 85' W, 27.72 FT, BARK SCRIBED. CAME BACK LATER AND SCRIBE WAS CHOPPED UP STUMP OF 40" FIR, S 45' E, 1.98 FT RESCRIBED: BARK, 24" NOW 36" FIR, N 85' W, 27.7 FT SCRIBED: 12" I.CEDAR, S 69' E, 23.5 FT

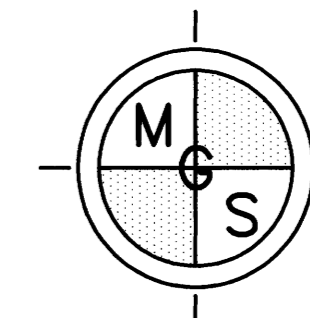
NOVEMBER 1965 DOUGLAS COUNTY SURVEYORS OFFICE VERNON "RAY" TRACE & CREW (C.S. FILE 54/16-19) ADDED 3/13/2018 FOUND: HAINES "T" IRON & 3/4" IRON PIPE AT CORNER & BT'S AS FOLLOWS: 48" D.FIR N 85' W, 27.7 FT (FACE) BARK SCRIBED "363 1/4 S27 BT" (NO ORIGINAL SCRIBE FOUND BY US, COULD BE ORIGINAL 40" BT) 14" R.CEDAR S 69' E, 23.5 FT (CENTER) "1/4 S26 BT" IN WOOD BURNED & ROTTED STUMP OF FIR S 45' E, 2.0 FT, NO SCRIBE FOUND

SEPTEMBER 1966 DOUGLAS COUNTY SURVEYORS OFFICE VERNON "RAY" TRACE & CREW (C.S. FILE 54/16-24) FOUND: HAINES "T" IRON & 3/4" IRON PIPE AT CORNER, SEE HAINES 1960 ORIGINAL 24" NOW 48" D.FIR, N 85' W, 27.7 FT, RE-BARK SCRIBED, ALIVE ORIGINAL 40" NOW BADLY DECAYED REMNANT OF BURNED STUMP, S 45' E, 2.0 FT, NO SCRIBE FOUND 12" NOW 14" I.CEDAR S 69' E, 23.5 FT, SCRIBED WITH HAINES' BUTTON ON FACE, CRACKED FROM THE GROUND UP, BEGINNING TO ROT DO NOT SET BRASS CAP NEW BT'S: 10" I.CEDAR N 54' W, 40.4 FT, MKD "1/4 S27 BT" 24" I.CEDAR S 49-1/4' E, 26.5 FT MKD "1/4 S26 CS BT" NOTE: THIS CORNER LIES SOUTH ON SLOPE OF SPUR, COURSE SOUTHWEST

JUNE THROUGH SEPTEMBER 1976 BLM RESURVEY BY JAMES E. JELLEY, CADASTRAL SURVEYOR UNDER GROUP NO. 895 (DCSO RECORDS VOLUME 41, PAGE 16138) THE 1/4 CORNER PERPETUATED AND RECORDED BY HAINES IN 1960 AND FURTHER PERPETUATED BY TRACY IN 1966, MONUMENTED WITH A 1" "T" SHAPED IRON ROD, FIRMLY SET, PROJECTING 10" ABOVE GROUND, FROM WHICH THE REMAINS OF THE OBTS: A FIR, 42" DIA. BEARS N 85' W, 42 LKS, WITH SCRIBE MARKS "BT" VISIBLE ON BARK BLAZE, AND SCRIBE MARKS "1/4 S26 BT" VISIBLE ON OPEN BLAZE AND BT'S MKD BY TRACY: A CEDAR, 25" DIA. BEARS S 50-3/4' E, 40-1/2 LKS, WITH SCRIBE MARKS "1/4 S26 BT" VISIBLE ON OPEN BLAZE A CEDAR, 10" DIA. BEARS N 55' W, 60-1/2 LKS, WITH SCRIBE MARKS "1/4 S27 BT" VISIBLE ON OPEN BLAZE AT THE CORNER POINT: SET AN IRON POST, 28" LONG, 2-1/2" DIA., 24" IN GROUND, WITH BRASS CAP MKD: "1/4 S27 S26 T23S R4W 1976" RESET "T" SHAPED IRON ROD ALONGSIDE IRON POST

JANUARY 1990 KEN HOFFINE, LS 2291 FOR LONE ROCK TIMBER CO. (M 109-56 - C.S. FILE 63/106)(SEE ALSO M 111-30 - C.S. FILE 63/106) CORNER REPORT FOUND: 1976 2-1/4" BLM BRASS CAP WITH HAINES' 3/4" T-IRON AND IDENTIFICATION BUTTON ON TOP OF BAR AND A 3/4" IRON PIPE AND THE FOLLOWING ACCESSORIES: ORIGINAL 24" D.FIR, NOW 42" BEARS N 85' W, 28.0 FT, SCRIBE MARKS ON OPEN BLAZE, NEARLY GROWN OVER OPEN BLAZE VISIBLE ORIGINAL 40" D.FIR BADLY DECAYED AND BURNED REMAINS AND STUMP HOLE BEARS S 45' E, 2.0 FT 27" I.CEDAR, BEARS S 50' E, 26.5 FT, WELL HEALED FACE, AND BLM TAG 10" I.CEDAR, BEARS N 55' W, 40.4 FT, VISIBLE SCRIBING AND BLM TAG 12" I.CEDAR, BEARS N 68' W, 23.1 FT, (REC S 68' E) VISIBLE SCRIBING AND BLM TAG CORNER LIES ON SOUTH FACING RIDGE APPROX. 70 FT BELOW A WIDE FLAT BENCH AND APPROX. 1150 FT SOUTH OF BLM GRAVEL ROAD

JANUARY 18, 2023 GARRETT FINCH AND CREW WITH MINISTER AND GLAESER SURVEYING FOUND 3-1/4" BLM BRASS CAP, 0.3 FT ABOVE GROUND IN GOOD CONDITION WITH 3/4" IRON PIPE SOUTHWEST AND ALONGSIDE, AND A 1" HAINES BRASS CAP NORTHWEST AND ALONGSIDE FROM WHICH: 28" CEDAR BEARS N 40' W, 21.8 FT TO SIDE CENTER, SCABBED BLAZE WITH BLANK LOCATION POSTER, (NO RECORD) 14" CEDAR BEARS N 44' W, 40.1 FT TO SIDE CENTER, WITH BT SIGN, NO VISIBLE BLAZING (1966) 44" FIR BEARS N 78' W, 28.1 FT TO SIDE CENTER, SCABBED BLAZE, AND BARK SCRIBE WITH BT SIGN AND HAINES WASHER (1884 & 1960) 34" CEDAR BEARS S 54' E, 25.7 FT TO SIDE CENTER, SCABBED BLAZE WITH BT SIGN (1966) (SET CHAINING NAIL AT SIDE CENTER, BT SIGNS ON FRONT AND REAR, AND PAINTED RED BAND FOR EXISTING BT'S)



MINISTER-GLAESER SURVEYING INC. 2200 E. EVERGREEN BLVD. VANCOUVER, WA 98661 (360) 694-3313

SCALE: N/A JOB NO. 22-319 DATE: 11/21/2023 CALC BY: DAR DRAWN BY: RDH CHECKED BY: DAR SHEET 4 OF 6