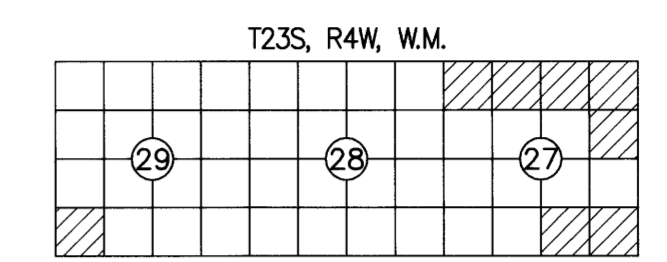


# RECORD OF SURVEY

FILED  
 DATE: 11/20/2023 BY: [Signature]  
 THIS SURVEY CONSISTS OF:  
 MAP: M178-72A-F  
 NARRATIVE:  
 CORNER RPT:  
 DOUGLAS COUNTY SURVEYOR

LOCATED IN A PORTION OF  
 THE NW 1/4, NE 1/4 AND SE 1/4 OF SECTION 27  
 AND THE SW 1/4 OF SECTION 29  
 T. 23 S., R. 4 W., W.M.  
 GREAT EXPECTATIONS AND FAST LANE-TASK B  
 DOUGLAS COUNTY, OREGON  
 CONTRACT NO. 1204T020D0010  
 TASK ORDER NO. 140L4322F0063



SURVEY FOR: UNITED STATES DEPARTMENT OF THE INTERIOR BUREAU OF LAND MANAGEMENT ROSEBURG DISTRICT OFFICE 777 NW GARDEN VALLEY BLVD ROSEBURG, OR 97471

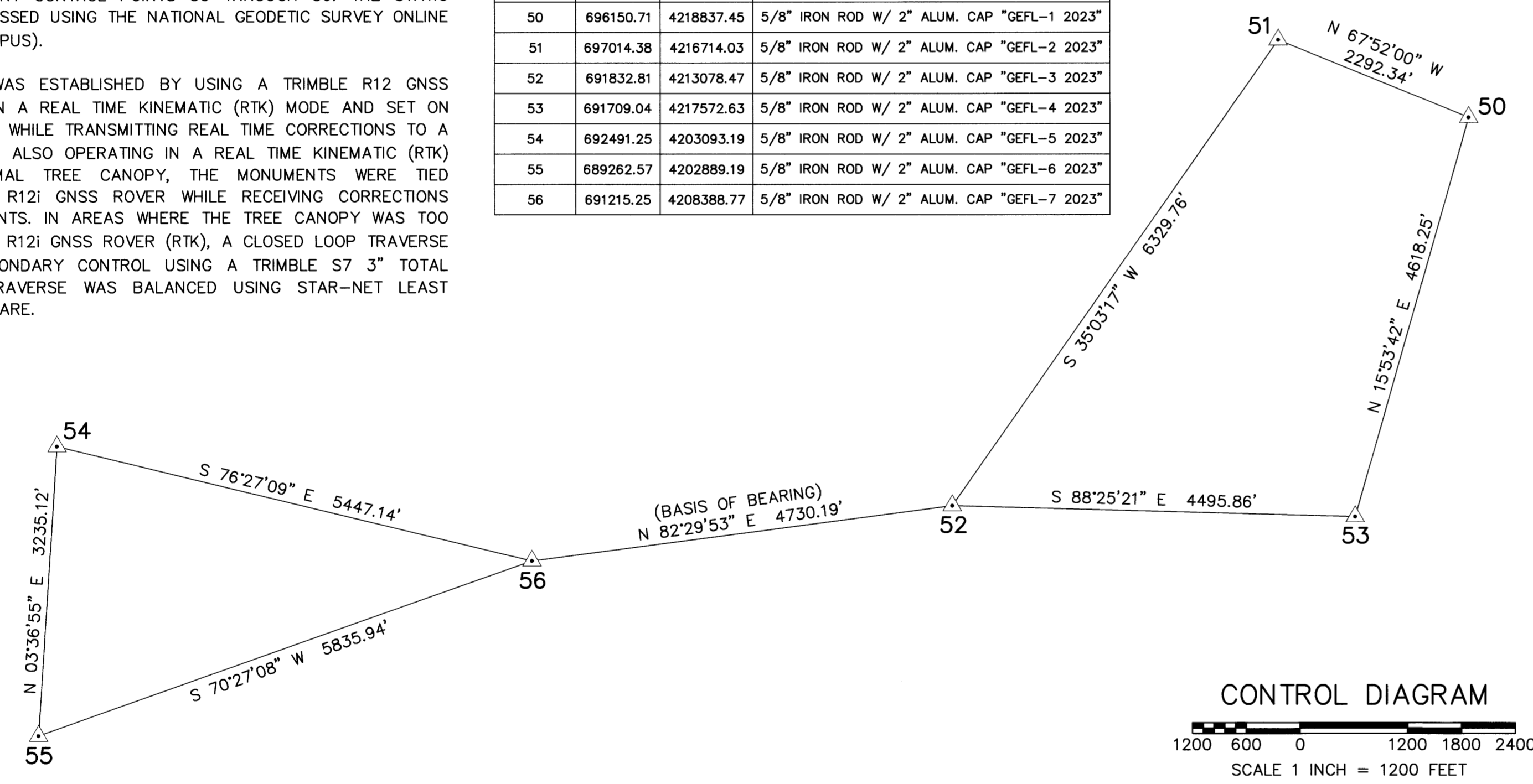
- GLO AND BLM REFERENCES:
- (1884) GENERAL LAND OFFICE SURVEY AND NOTES FOR SECTIONS 27, T. 23 S., R. 4 W., W.M. EXECUTED BY WILLIAM P. WRIGHT, OCTOBER THROUGH NOVEMBER 1884 DEPENDENT RESURVEY DATED JANUARY 28, 1980 (5702)
  - (1976) BUREAU OF LAND MANAGEMENT RESURVEY AND NOTES FOR SECTIONS 27 & 29, T. 23 S., R. 4 W., W.M. EXECUTED BY JAMES E. JELLEY, JUNE THROUGH SEPTEMBER 1976 DEPENDENT RESURVEY DATED JANUARY 28, 1980 (5702)

### CONTROL PROCEDURE:

A TRIMBLE R12 GNSS BASE RECEIVER WAS USED TO COLLECT OVER 8 HOURS OF STATIC DATA ON THE PRIMARY CONTROL POINTS 50 THROUGH 56. THE STATIC DATA WAS THEN POST PROCESSED USING THE NATIONAL GEODETIC SURVEY ONLINE POSITIONING USER SERVICE (OPUS).

THE SECONDARY CONTROL WAS ESTABLISHED BY USING A TRIMBLE R12 GNSS BASE RECEIVER OPERATING IN A REAL TIME KINEMATIC (RTK) MODE AND SET ON THE PRIMARY OPUS CONTROL WHILE TRANSMITTING REAL TIME CORRECTIONS TO A TRIMBLE R12I GNSS RECEIVER ALSO OPERATING IN A REAL TIME KINEMATIC (RTK) MODE. IN AREAS OF MINIMAL TREE CANOPY, THE MONUMENTS WERE TIED DIRECTLY USING A TRIMBLE R12I GNSS ROVER WHILE RECEIVING CORRECTIONS FROM PRIMARY CONTROL POINTS. IN AREAS WHERE THE TREE CANOPY WAS TOO DENSE FOR USING A TRIMBLE R12I GNSS ROVER (RTK), A CLOSED LOOP TRAVERSE WAS RUN OFF OF THE SECONDARY CONTROL USING A TRIMBLE S7 3" TOTAL STATION. EACH CONTROL TRAVERSE WAS BALANCED USING STAR-NET LEAST SQUARES ADJUSTMENT SOFTWARE.

POINT NO.	NORTHING	EASTING	DESCRIPTION
50	696150.71	4218837.45	5/8" IRON ROD W/ 2" ALUM. CAP "GEFL-1 2023"
51	697014.38	4216714.03	5/8" IRON ROD W/ 2" ALUM. CAP "GEFL-2 2023"
52	691832.81	4213078.47	5/8" IRON ROD W/ 2" ALUM. CAP "GEFL-3 2023"
53	691709.04	4217572.63	5/8" IRON ROD W/ 2" ALUM. CAP "GEFL-4 2023"
54	692491.25	4203093.19	5/8" IRON ROD W/ 2" ALUM. CAP "GEFL-5 2023"
55	689262.57	4202889.19	5/8" IRON ROD W/ 2" ALUM. CAP "GEFL-6 2023"
56	691215.25	4208388.77	5/8" IRON ROD W/ 2" ALUM. CAP "GEFL-7 2023"



### NARRATIVE:

THE PURPOSE OF THIS SURVEY WAS TO FULFILL THE CONTRACT (1204T020D0010/140L4322F0063) REQUIREMENTS FOR THE GREAT EXPECTATIONS AND FAST LANE CADASTRAL SURVEY AS LISTED BELOW:

- SECTION 27, T. 23 S., R. 4 W., W.M.
- SECTION 29, T. 23 S., R. 4 W., W.M.

### LOCATION OF PROJECT:

THIS PROJECT IS LOCATED APPROXIMATELY 35 MILES SOUTH OF EUGENE, OREGON WITHIN T. 23 S., R. 4 W., W.M., DOUGLAS COUNTY, OREGON.

### GENERAL NOTES:

THIS CONTRACT IS FOR BOUNDARY LINE MARKING/POSTING AND BOUNDARY LINE MAINTENANCE. WE COMPLETED THE MAINTENANCE OF 9 CORNERS, AND SURVEYED AND POSTED 2.51 MILES OF BOUNDARY. ALL BOUNDARY WORK COMPLIED WITH THE SURVEY SPECIFICATIONS AND PROCEDURES OUTLINED IN THE BUREAU OF LAND MANAGEMENT MANUAL OF SURVEYING INSTRUCTIONS (2009). ALL CORNERS WERE MAINTAINED TO THE SPECIFICATIONS CONTAINED IN SECTION C OF THE R6 2020 CADASTRAL SURVEY IDIQ STANDARDS. SURVEY AND LAND RECORDS RESEARCH WAS PERFORMED TO VERIFY THE CHAIN OF SURVEY AT EACH CORNER PRIOR TO MAINTAINING THE CORNERS AND MARKING AND POSTING THE BOUNDARIES. BOUNDARY DELINEATOR POSTS AND SIGNS (SEE EXAMPLE SIGNS BELOW) WERE SET ALONG THE BOUNDARY WHERE GAPS IN THE EXISTING POSTING ARE FOUND AND THE BOUNDARY LINE BLAZING WAS ADDED OR REFRESHED. SIGNS OF ENCROACHMENT AND/OR TRESPASS WERE NOT FOUND.

IF EXISTING MONUMENTS WERE FOUND AT AN ACCEPTABLE POSITION AND WERE MONUMENTED TO STANDARD, STANDARD CORNER MAINTENANCE WAS PERFORMED.

ALL CORNER SEARCH AND EVALUATION WAS PERFORMED BY DANIEL RENTON, PLS 2830. THE PROJECT AREA IS ACCESSED BY COUNTY ROADS, PRIVATE ROADS AND OTHER FOREST ROADS.

CORNER MONUMENTS AND ALL NECESSARY SIGNS AND POSTS WERE PROVIDED BY THE BUREAU OF LAND MANAGEMENT.

THE BEARINGS SHOWN HEREIN FOR BEARING TREES WERE MEASURED USING A BRUNTON GEO TRANSIT COMPASS (MAGNETIC DECLINATION=15° EAST)

THE DISTANCES AND DIAMETERS SHOWN HEREIN FOR BEARING TREES WERE MEASURED USING A STEEL LOGGERS TAPE.

### TASK AND CORNERS SET AND MAINTAINED:

- SECTION 27, T. 23 S., R. 4 W., W.M.
- TIE POSITIONS, VERIFY AND MAINTAIN THE FOLLOWING CORNERS:
    - CORNER R-17, (GCDB 500300) CORNER SECTIONS 22, 23, 26 & 27
    - CORNER T-17, (GCDB 500240) 1/4 CORNER OF SECTIONS 26 & 27
    - CORNER R-15, (GCDB 440300) 1/4 CORNER SECTIONS 22 & 27
    - CORNER R-13, (GCDB 400300) SECTION CORNER OF SECTIONS 21, 22, 27 & 28
    - CORNER V-15, (GCDB 440200) 1/4 CORNER OF SECTIONS 27 & 34
    - CORNER V-17, (GCDB 500200) SECTION CORNER OF SECTIONS 26, 27, 34 & 35
  - SURVEY LINE, MARK AND POST BOUNDARY SHOWN HEREIN

THE FOLLOWING CORNER WAS TIED FOR REFERENCE ONLY AND WAS NOT PART OF THIS CONTRACT:

- CORNER V-13, (GCDB 400200) SECTION CORNER OF SECTIONS 27, 28, 33 & 34

SECTION 29, T. 23 S., R. 4 W., W.M.

- TIE POSITIONS, VERIFY AND MAINTAIN THE FOLLOWING CORNERS:
  - CORNER U-5, (GCDB 200220) S 1/16 CORNER OF SECTIONS 29 & 30
  - CORNER V-6, (GCDB 220200) W 1/16 CORNER OF SECTIONS 29 & 32
  - CORNER V-5, (GCDB 200200) SECTION CORNER OF SECTIONS 29, 30, 31 & 32
- SURVEY LINE, MARK AND POST BOUNDARY SHOWN HEREIN

### SURVEY REFERENCES:

- (1974) SHANER SURVEY MAP FILE M49-55 SECTION 27, T. 23 S., R. 4 W., W.M.
- (1990) BRANCH SURVEY C.S. FILE 63/104 M110-58 SECTION 27, T. 23 S., R. 4 W., W.M.
- (1991) HOFFINE SURVEY C.S. FILE 63/106 M111-30 SECTION 26, T. 23 S., R. 4 W., W.M.
- (1995) BROWN SURVEY C.S. FILE 63/161 - M121-69 SECTION 27, T. 23 S., R. 4 W., W.M.
- (2009) HOFFINE SURVEY MAP FILE M159-8 SECTION 27, T. 23 S., R. 4 W., W.M.

### SHEET INDEX

SHEET 1	VICINITY MAP, EQUIPMENT LIST, CONTROL DIAGRAM AND TABLE, CONTROL PROCEDURE, REFERENCES, CERTIFICATES, POSTED SIGNS AND NARRATIVE
SHEET 2	SECTION 29 SITE DETAILS, FOUND AND SET MONUMENT COORDINATE TABLES AND LEGEND
SHEET 3	SECTION 27 SITE DETAILS, FOUND AND SET MONUMENT COORDINATE TABLES AND LEGEND
SHEET 4	MONUMENT DETAILS AND CORNER HISTORY
SHEETS 5-6	CORNER HISTORY

### EQUIPMENT LIST:

- 2018 GMC SIERRA 2500HD SURVEY TRUCK
- TRIMBLE R12 GNSS BASE RECEIVER
- TRIMBLE R12I GNSS ROVER RECEIVER
- TRIMBLE S7 3" TOTAL STATION
- SUUNTO HAND COMPASS (MAGNETIC DECLINATION=15° EAST)
- TRIMBLE TD1 450HX 35-WATT RADIO
- TRIMBLE TSC5 DATA COLLECTOR WITH TRIMBLE ACCESS SOFTWARE
- AUTODESK CIVIL 3D 2023
- TRIMBLE BUSINESS CENTER
- STAR-NET LEAST SQUARES ADJUSTMENT SOFTWARE

BASIS OF BEARING: N 82°29'53" E ALONG THE CONTROL LINE BETWEEN (MGS CONTROL POINT 56) AND (MGS CONTROL POINT 52)  
 NAD 83(2011)(EPOCH 2010.0000), OREGON STATE PLANE COORDINATE SYSTEM, NORTH ZONE, INTERNATIONAL FEET.  
 AT (MGS CONTROL POINT 52)  
 CONVERGENCE ANGLE -01°49'39"  
 COMBINED SCALE FACTOR 0.99987941  
 THE DISTANCES SHOWN HEREIN ARE GRID, TO OBTAIN GROUND DISTANCES DIVIDE THE GRID DISTANCES BY THE COMBINED SCALE FACTOR OF 0.99987941 (0.64' PER MILE/0.012' PER 100')

MINISTER AND GLAESER SURVEYING, INC. MAKES NO WARRANTIES AS TO MATTERS OF UNWRITTEN TITLE SUCH AS ADVERSE POSSESSION, ACQUIESCENCE, ESTOPPEL, ETC.

UNITED STATES DEPARTMENT OF THE INTERIOR BUREAU OF LAND MANAGEMENT

## BOUNDARY

NO TIMBER MAY BE CUT OR REMOVED WITHOUT AUTHORIZATION

T.  R.  SEC.  LINE IS APPROX.  FT.

CORNER IS APPROX.  FT.

POSTED BY  DATE

BLM OFFICE IS LOCATED AT

UNITED STATES DEPARTMENT OF THE INTERIOR BUREAU OF LAND MANAGEMENT

## BEARING TREE

IT IS UNLAWFUL TO DESTROY, DEFACE, CHANGE OR REMOVE ANY CORNER OF THE PUBLIC LAND SURVEYS OR TO CUT DOWN OR DEFACE ANY BEARING TREE PERTAINING TO SUCH SURVEYS.

CORNER IS APPROXIMATELY  DISTANCE  DIRECTION

T.  R.  SEC.  POSTED BY  DATE

## LAND SURVEY MONUMENT

### PLEASE DO NOT DISTURB

THIS MONUMENT WAS LOCATED AS PART OF AN OFFICIAL LAND SURVEY. IT HELPS DEFINE LAND OWNERSHIP LINES.

FOR FURTHER INFORMATION CONTACT THE BUREAU OF LAND MANAGEMENT

REGISTERED PROFESSIONAL LAND SURVEYOR

11/21/2023 [Signature]

OREGON JUNE 30, 1997 DANIEL A. RENTON 2830 Expires 12-31-2024

MINISTER-GLAESER SURVEYING INC. 2200 E. EVERGREEN BLVD. VANCOUVER, WA 98661 (360) 694-3313

SCALE: 1"=1200'  
 JOB NO. 22-319  
 DATE: 11/21/2023  
 CALC BY: DAR  
 DRAWN BY: RDH  
 CHECKED BY: DAR  
 SHEET 1 OF 6