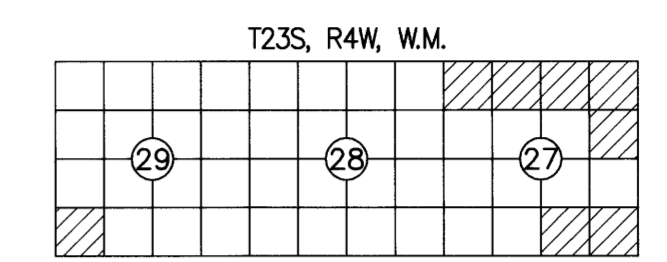


RECORD OF SURVEY

FILED
 DATE: 11/20/2023 BY: [Signature]
 THIS SURVEY CONSISTS OF:
 MAP: M178-72A-F
 NARRATIVE:
 CORNER RPT:
 DOUGLAS COUNTY SURVEYOR

LOCATED IN A PORTION OF
 THE NW 1/4, NE 1/4 AND SE 1/4 OF SECTION 27
 AND THE SW 1/4 OF SECTION 29
 T. 23 S., R. 4 W., W.M.
 GREAT EXPECTATIONS AND FAST LANE-TASK B
 DOUGLAS COUNTY, OREGON
 CONTRACT NO. 1204T020D0010
 TASK ORDER NO. 140L4322F0063



SURVEY FOR: UNITED STATES DEPARTMENT OF THE INTERIOR BUREAU OF LAND MANAGEMENT ROSEBURG DISTRICT OFFICE 777 NW GARDEN VALLEY BLVD ROSEBURG, OR 97471

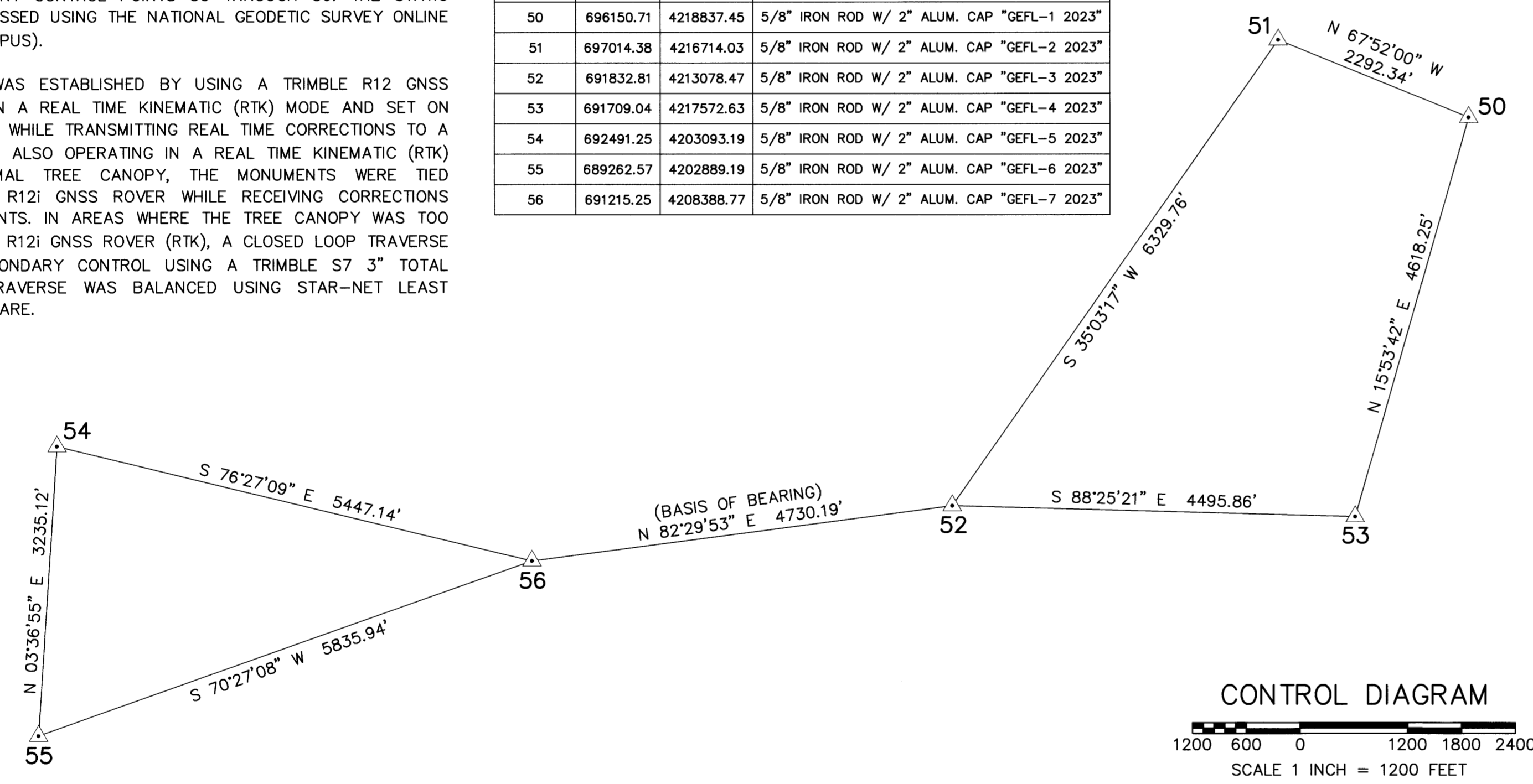
- GLO AND BLM REFERENCES:
- (1884) GENERAL LAND OFFICE SURVEY AND NOTES FOR SECTIONS 27, T. 23 S., R. 4 W., W.M. EXECUTED BY WILLIAM P. WRIGHT, OCTOBER THROUGH NOVEMBER 1884 DEPENDENT RESURVEY DATED JANUARY 28, 1980 (5702)
 - (1976) BUREAU OF LAND MANAGEMENT RESURVEY AND NOTES FOR SECTIONS 27 & 29, T. 23 S., R. 4 W., W.M. EXECUTED BY JAMES E. JELLEY, JUNE THROUGH SEPTEMBER 1976 DEPENDENT RESURVEY DATED JANUARY 28, 1980 (5702)

CONTROL PROCEDURE:

A TRIMBLE R12 GNSS BASE RECEIVER WAS USED TO COLLECT OVER 8 HOURS OF STATIC DATA ON THE PRIMARY CONTROL POINTS 50 THROUGH 56. THE STATIC DATA WAS THEN POST PROCESSED USING THE NATIONAL GEODETIC SURVEY ONLINE POSITIONING USER SERVICE (OPUS).

THE SECONDARY CONTROL WAS ESTABLISHED BY USING A TRIMBLE R12 GNSS BASE RECEIVER OPERATING IN A REAL TIME KINEMATIC (RTK) MODE AND SET ON THE PRIMARY OPUS CONTROL WHILE TRANSMITTING REAL TIME CORRECTIONS TO A TRIMBLE R12I GNSS RECEIVER ALSO OPERATING IN A REAL TIME KINEMATIC (RTK) MODE. IN AREAS OF MINIMAL TREE CANOPY, THE MONUMENTS WERE TIED DIRECTLY USING A TRIMBLE R12I GNSS ROVER WHILE RECEIVING CORRECTIONS FROM PRIMARY CONTROL POINTS. IN AREAS WHERE THE TREE CANOPY WAS TOO DENSE FOR USING A TRIMBLE R12I GNSS ROVER (RTK), A CLOSED LOOP TRAVERSE WAS RUN OFF OF THE SECONDARY CONTROL USING A TRIMBLE S7 3" TOTAL STATION. EACH CONTROL TRAVERSE WAS BALANCED USING STAR-NET LEAST SQUARES ADJUSTMENT SOFTWARE.

POINT NO.	NORTHING	EASTING	DESCRIPTION
50	696150.71	4218837.45	5/8" IRON ROD W/ 2" ALUM. CAP "GEFL-1 2023"
51	697014.38	4216714.03	5/8" IRON ROD W/ 2" ALUM. CAP "GEFL-2 2023"
52	691832.81	4213078.47	5/8" IRON ROD W/ 2" ALUM. CAP "GEFL-3 2023"
53	691709.04	4217572.63	5/8" IRON ROD W/ 2" ALUM. CAP "GEFL-4 2023"
54	692491.25	4203093.19	5/8" IRON ROD W/ 2" ALUM. CAP "GEFL-5 2023"
55	689262.57	4202889.19	5/8" IRON ROD W/ 2" ALUM. CAP "GEFL-6 2023"
56	691215.25	4208388.77	5/8" IRON ROD W/ 2" ALUM. CAP "GEFL-7 2023"



NARRATIVE:

THE PURPOSE OF THIS SURVEY WAS TO FULFILL THE CONTRACT (1204T020D0010/140L4322F0063) REQUIREMENTS FOR THE GREAT EXPECTATIONS AND FAST LANE CADASTRAL SURVEY AS LISTED BELOW:

- SECTION 27, T. 23 S., R. 4 W., W.M.
- SECTION 29, T. 23 S., R. 4 W., W.M.

LOCATION OF PROJECT:

THIS PROJECT IS LOCATED APPROXIMATELY 35 MILES SOUTH OF EUGENE, OREGON WITHIN T. 23 S., R. 4 W., W.M., DOUGLAS COUNTY, OREGON.

GENERAL NOTES:

THIS CONTRACT IS FOR BOUNDARY LINE MARKING/POSTING AND BOUNDARY LINE MAINTENANCE. WE COMPLETED THE MAINTENANCE OF 9 CORNERS, AND SURVEYED AND POSTED 2.51 MILES OF BOUNDARY. ALL BOUNDARY WORK COMPLIED WITH THE SURVEY SPECIFICATIONS AND PROCEDURES OUTLINED IN THE BUREAU OF LAND MANAGEMENT MANUAL OF SURVEYING INSTRUCTIONS (2009). ALL CORNERS WERE MAINTAINED TO THE SPECIFICATIONS CONTAINED IN SECTION C OF THE R6 2020 CADASTRAL SURVEY IDIQ STANDARDS. SURVEY AND LAND RECORDS RESEARCH WAS PERFORMED TO VERIFY THE CHAIN OF SURVEY AT EACH CORNER PRIOR TO MAINTAINING THE CORNERS AND MARKING AND POSTING THE BOUNDARIES. BOUNDARY DELINEATOR POSTS AND SIGNS (SEE EXAMPLE SIGNS BELOW) WERE SET ALONG THE BOUNDARY WHERE GAPS IN THE EXISTING POSTING ARE FOUND AND THE BOUNDARY LINE BLAZING WAS ADDED OR REFRESHED. SIGNS OF ENCROACHMENT AND/OR TRESPASS WERE NOT FOUND.

IF EXISTING MONUMENTS WERE FOUND AT AN ACCEPTABLE POSITION AND WERE MONUMENTED TO STANDARD, STANDARD CORNER MAINTENANCE WAS PERFORMED.

ALL CORNER SEARCH AND EVALUATION WAS PERFORMED BY DANIEL RENTON, PLS 2830. THE PROJECT AREA IS ACCESSED BY COUNTY ROADS, PRIVATE ROADS AND OTHER FOREST ROADS.

CORNER MONUMENTS AND ALL NECESSARY SIGNS AND POSTS WERE PROVIDED BY THE BUREAU OF LAND MANAGEMENT.

THE BEARINGS SHOWN HEREIN FOR BEARING TREES WERE MEASURED USING A BRUNTON GEO TRANSIT COMPASS (MAGNETIC DECLINATION=15° EAST)

THE DISTANCES AND DIAMETERS SHOWN HEREIN FOR BEARING TREES WERE MEASURED USING A STEEL LOGGERS TAPE.

TASK AND CORNERS SET AND MAINTAINED:

- SECTION 27, T. 23 S., R. 4 W., W.M.
- TIE POSITIONS, VERIFY AND MAINTAIN THE FOLLOWING CORNERS:
 CORNER R-17, (GCDB 500300) CORNER SECTIONS 22, 23, 26 & 27
 CORNER T-17, (GCDB 500240) 1/4 CORNER OF SECTIONS 26 & 27
 CORNER R-15, (GCDB 440300) 1/4 CORNER SECTIONS 22 & 27
 CORNER R-13, (GCDB 400300) SECTION CORNER OF SECTIONS 21, 22, 27 & 28
 CORNER V-15, (GCDB 440200) 1/4 CORNER OF SECTIONS 27 & 34
 CORNER V-17, (GCDB 500200) SECTION CORNER OF SECTIONS 26, 27, 34 & 35
 - SURVEY LINE, MARK AND POST BOUNDARY SHOWN HEREIN

THE FOLLOWING CORNER WAS TIED FOR REFERENCE ONLY AND WAS NOT PART OF THIS CONTRACT:
 CORNER V-13, (GCDB 400200) SECTION CORNER OF SECTIONS 27, 28, 33 & 34

SECTION 29, T. 23 S., R. 4 W., W.M.

- TIE POSITIONS, VERIFY AND MAINTAIN THE FOLLOWING CORNERS:
 CORNER U-5, (GCDB 200220) S 1/16 CORNER OF SECTIONS 29 & 30
 CORNER V-6, (GCDB 220200) W 1/16 CORNER OF SECTIONS 29 & 32
 CORNER V-5, (GCDB 200200) SECTION CORNER OF SECTIONS 29, 30, 31 & 32
 - SURVEY LINE, MARK AND POST BOUNDARY SHOWN HEREIN

SURVEY REFERENCES:

- (1974) SHANER SURVEY MAP FILE M49-55 SECTION 27, T. 23 S., R. 4 W., W.M.
- (1990) BRANCH SURVEY C.S. FILE 63/104 M110-58 SECTION 27, T. 23 S., R. 4 W., W.M.
- (1991) HOFFINE SURVEY C.S. FILE 63/106 M111-30 SECTION 26, T. 23 S., R. 4 W., W.M.
- (1995) BROWN SURVEY C.S. FILE 63/161 - M121-69 SECTION 27, T. 23 S., R. 4 W., W.M.
- (2009) HOFFINE SURVEY MAP FILE M159-8 SECTION 27, T. 23 S., R. 4 W., W.M.

SHEET INDEX

SHEET 1	VICINITY MAP, EQUIPMENT LIST, CONTROL DIAGRAM AND TABLE, CONTROL PROCEDURE, REFERENCES, CERTIFICATES, POSTED SIGNS AND NARRATIVE
SHEET 2	SECTION 29 SITE DETAILS, FOUND AND SET MONUMENT COORDINATE TABLES AND LEGEND
SHEET 3	SECTION 27 SITE DETAILS, FOUND AND SET MONUMENT COORDINATE TABLES AND LEGEND
SHEET 4	MONUMENT DETAILS AND CORNER HISTORY
SHEETS 5-6	CORNER HISTORY

EQUIPMENT LIST:

- 2018 GMC SIERRA 2500HD SURVEY TRUCK
- TRIMBLE R12 GNSS BASE RECEIVER
- TRIMBLE R12I GNSS ROVER RECEIVER
- TRIMBLE S7 3" TOTAL STATION
- SUUNTO HAND COMPASS (MAGNETIC DECLINATION=15° EAST)
- TRIMBLE TD1 450HX 35-WATT RADIO
- TRIMBLE TSC5 DATA COLLECTOR WITH TRIMBLE ACCESS SOFTWARE
- AUTODESK CIVIL 3D 2023
- TRIMBLE BUSINESS CENTER
- STAR-NET LEAST SQUARES ADJUSTMENT SOFTWARE

BASIS OF BEARING: N 82°29'53" E ALONG THE CONTROL LINE BETWEEN (MGS CONTROL POINT 56) AND (MGS CONTROL POINT 52)
 NAD 83(2011)(EPOCH 2010.0000), OREGON STATE PLANE COORDINATE SYSTEM, NORTH ZONE, INTERNATIONAL FEET.
 AT (MGS CONTROL POINT 52)
 CONVERGENCE ANGLE -01°49'39"
 COMBINED SCALE FACTOR 0.99987941
 THE DISTANCES SHOWN HEREIN ARE GRID, TO OBTAIN GROUND DISTANCES DIVIDE THE GRID DISTANCES BY THE COMBINED SCALE FACTOR OF 0.99987941 (0.64' PER MILE/0.012' PER 100')

MINISTER AND GLAESER SURVEYING, INC. MAKES NO WARRANTIES AS TO MATTERS OF UNWRITTEN TITLE SUCH AS ADVERSE POSSESSION, ACQUIESCENCE, ESTOPPEL, ETC.

UNITED STATES DEPARTMENT OF THE INTERIOR BUREAU OF LAND MANAGEMENT

BOUNDARY

NO TIMBER MAY BE CUT OR REMOVED WITHOUT AUTHORIZATION

T. R. SEC. LINE IS APPROX. FT.

CORNER IS APPROX. FT.

POSTED BY DATE

BLM OFFICE IS LOCATED AT

UNITED STATES DEPARTMENT OF THE INTERIOR BUREAU OF LAND MANAGEMENT

BEARING TREE

IT IS UNLAWFUL TO DESTROY, DEFACE, CHANGE OR REMOVE ANY CORNER OF THE PUBLIC LAND SURVEYS OR TO CUT DOWN OR DEFACE ANY BEARING TREE PERTAINING TO SUCH SURVEYS.

CORNER IS APPROXIMATELY DISTANCE DIRECTION

T. R. SEC. POSTED BY DATE

LAND SURVEY MONUMENT

PLEASE DO NOT DISTURB

THIS MONUMENT WAS LOCATED AS PART OF AN OFFICIAL LAND SURVEY. IT HELPS DEFINE LAND OWNERSHIP LINES.

FOR FURTHER INFORMATION CONTACT THE BUREAU OF LAND MANAGEMENT

REGISTERED PROFESSIONAL LAND SURVEYOR

11/21/2023

[Signature]

OREGON
 JUNE 30, 1997
 DANIEL A. RENTON
 2830
 Expires 12-31-2024

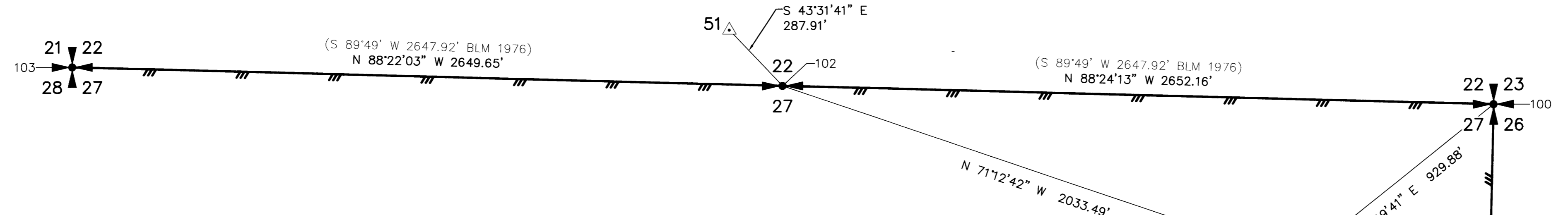
MINISTER-GLAESER SURVEYING INC.
 2200 E. EVERGREEN BLVD.
 VANCOUVER, WA 98661
 (360) 694-3313

SCALE: 1"=1200'
 JOB NO. 22-319
 DATE: 11/21/2023
 CALC BY: DAR
 DRAWN BY: RDH
 CHECKED BY: DAR
 SHEET 1 OF 6

RECORD OF SURVEY

LOCATED IN A PORTION OF
 THE NW 1/4, NE 1/4 AND SE 1/4 OF SECTION 27
 AND THE SW 1/4 OF SECTION 29
 T. 23 S., R. 4 W., W.M.
 GREAT EXPECTATIONS AND FAST LANE—TASK B
 DOUGLAS COUNTY, OREGON
 CONTRACT NO. 1204T020D0010
 TASK ORDER NO. 140L4322F0063

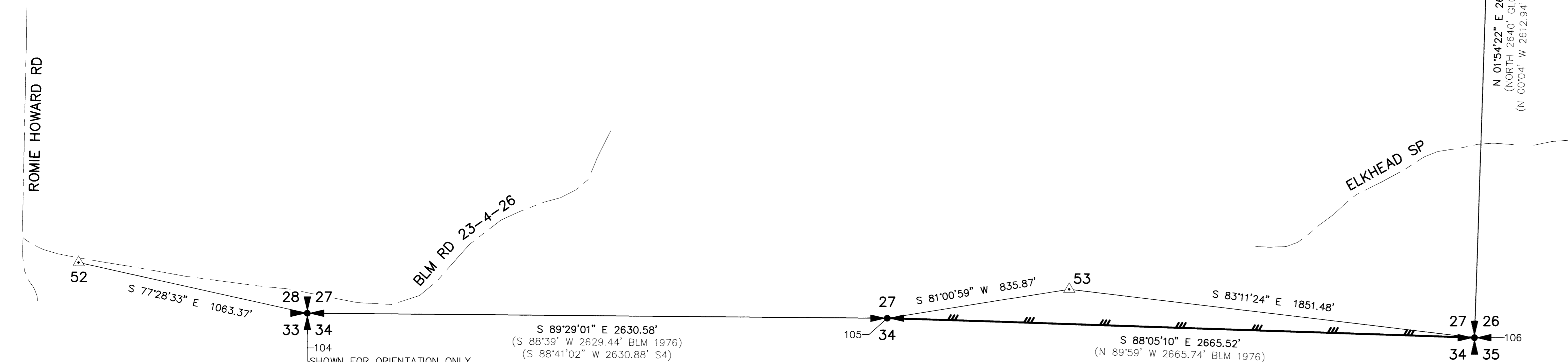
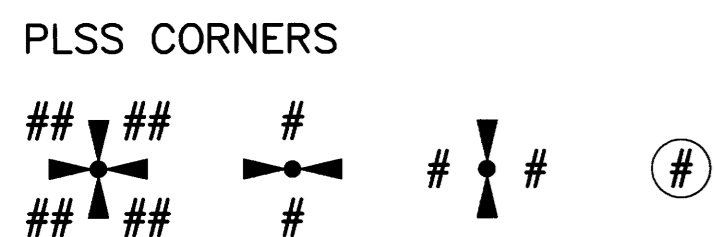
FILED
 DATE: 11-20-2023 BY: [Signature]
 THIS SURVEY CONSISTS OF:
 MAP: M178-72 A-F
 NARRATIVE:
 CORNER RPT:
 DOUGLAS COUNTY
 SURVEYOR



NOTE: SEE FOUND MONUMENT DETAILS
 AND STAMPING ON SHEET 4

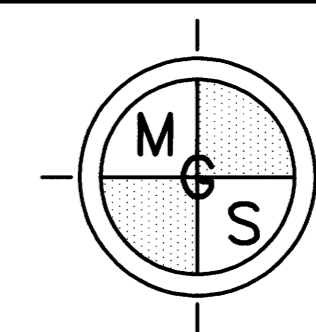
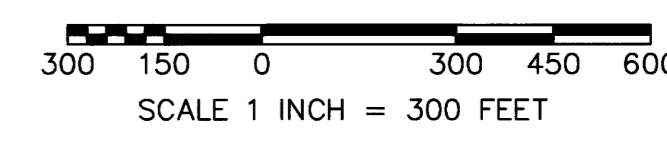
- LEGEND:**
- INDICATES MONUMENT FOUND AS NOTED IN TABLES ON SHEETS 4, 5 & 6
 - ⊙ INDICATES 5/8" X 30" IRON ROD WITH 2" ALUMINUM CAP SET FOR REFERENCE MONUMENT, SEE SHEET 1
 - △ INDICATES MGS CONTROL POINT, SET 5/8" IRON ROD W/ 2" ALUMINUM CAP, SEE SHEET 1
 - (S#) INDICATES RECORD DATA PER SURVEY REFERENCE NUMBER
 - (GLO) INDICATES RECORD DATA AND YEAR PER GENERAL LAND OFFICE
 - (BLM) INDICATES RECORD DATA AND YEAR PER BUREAU OF LAND MANAGEMENT
 - T. INDICATES TOWNSHIP
 - R. INDICATES RANGE
 - SEC. INDICATES SECTION
 - BT INDICATES BEARING TREE
 - RP INDICATES REFERENCE POINT
 - CH INDICATES CHAINS (1 CHAIN=66 FEET)
 - LKS INDICATES LINKS (1 LINK=0.66 FEET)
 - W/ INDICATES WITH
 - CONT. INDICATES CONTINUED
 - MKD INDICATES MARKED
 - ALUM. INDICATES ALUMINUM
 - S.O.L. INDICATES SOUTH OF LINE
 - W.O.L. INDICATES WEST OF LINE
 - |— INDICATES BOUNDARY LINE, MARKED AND POSTED
 - |—|— INDICATES SECTION SUBDIVISION
 - CRK— INDICATES CENTERLINE OF CREEK
 - — — INDICATES CENTERLINE OF ROAD
 - x—x— INDICATES FENCE LINE

FOUND MONUMENT TABLE					
POINT NO.	NORTHING	EASTING	GCDB CODE	DNR CODE	DESCRIPTION
100	696731.75	4219563.44	500300	R-17	3-1/4" BRASS CAP
101	694102.13	4219498.00	500240	T-17	3-1/4" BRASS CAP
102	696805.64	4216912.31	440300	R-15	3-1/4" BRASS CAP
103	696881.12	4214263.74	400300	R-13	2-1/2" BRASS CAP
104	691602.22	4214116.54	400200	V-13	3-1/4" BRASS CAP
105	691578.51	4216747.01	440200	V-15	3-1/4" BRASS CAP
106	691489.50	4219411.04	500200	V-17	3-1/4" BRASS CAP



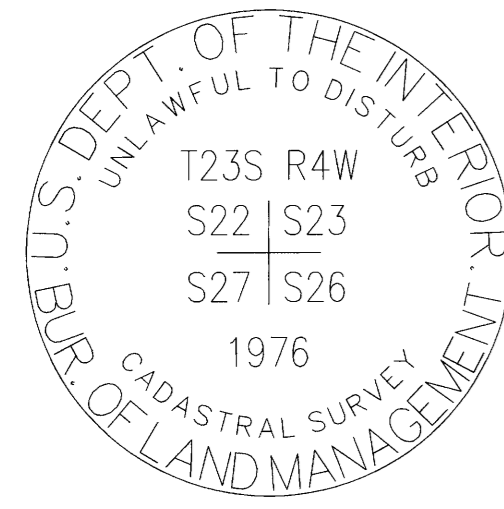
104 SHOWN FOR ORIENTATION ONLY,
 NOT PART OF CONTRACT,
 NO MAINTENANCE PERFORMED
 THIS SURVEY

REGISTERED
 PROFESSIONAL
 LAND SURVEYOR
 11/21/2023
 Daniel A. Renton
 OREGON
 JUNE 30, 1997
 DANIEL A. RENTON
 2830
 Expires 12-31-2024

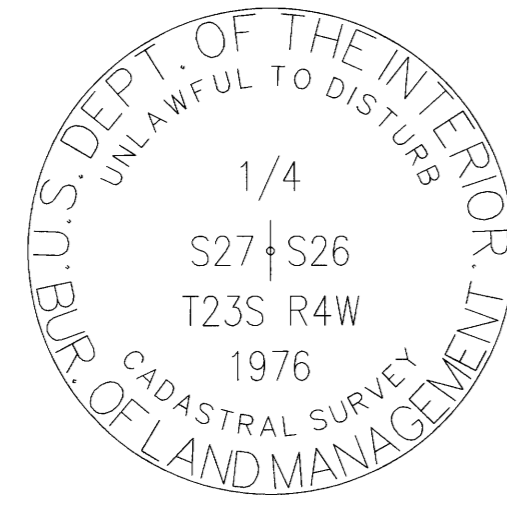


MINISTER-GLAESER
 SURVEYING INC.
 2200 E. EVERGREEN BLVD.
 VANCOUVER, WA 98661
 (360) 694-3313

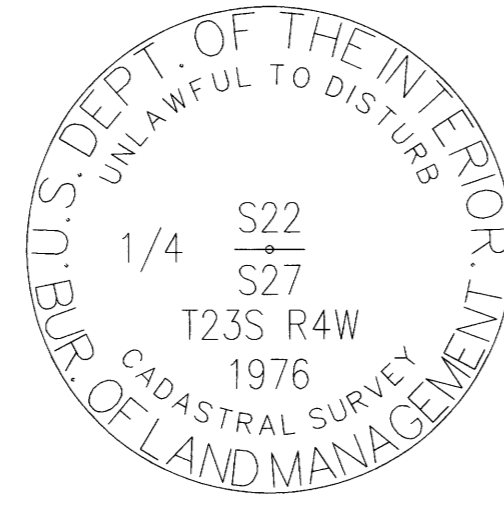
SCALE: 1"=300'
 JOB NO. 22-319
 DATE: 11/21/2023
 CALC BY: DAR
 DRAWN BY: RDH
 CHECKED BY: DAR
 SHEET 3 OF 6



POINT NUMBER: 100



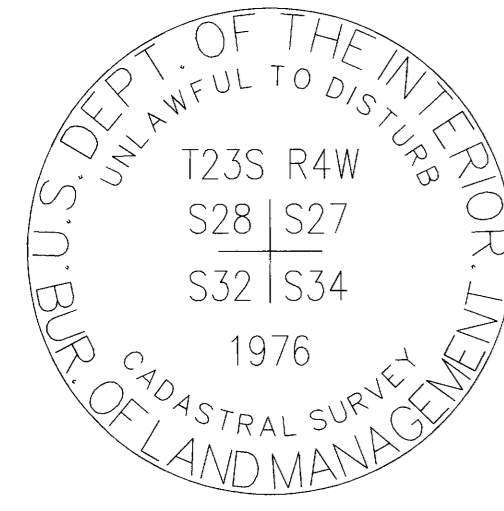
POINT NUMBER: 101



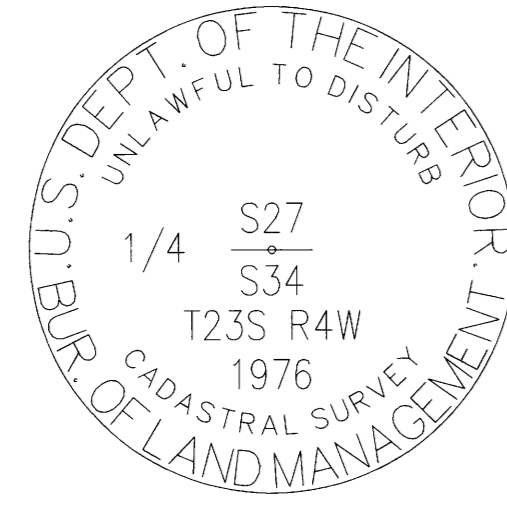
POINT NUMBER: 102



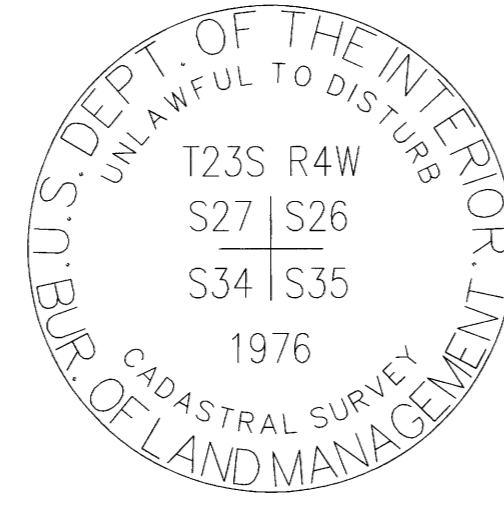
POINT NUMBER: 103



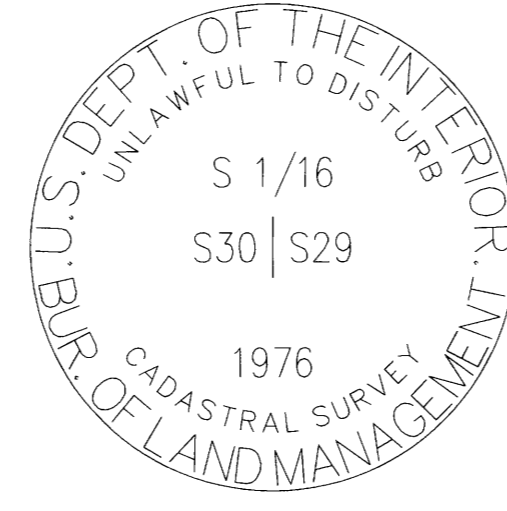
POINT NUMBER: 104



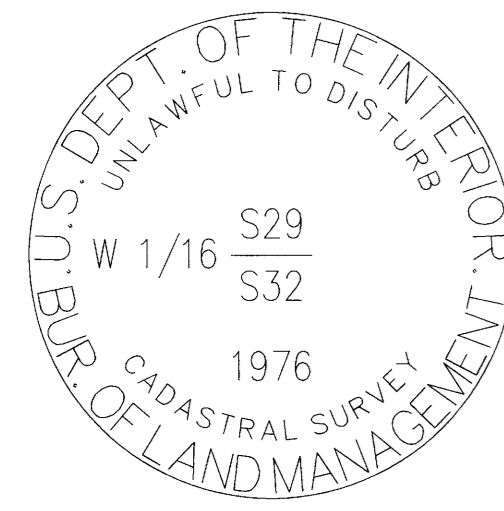
POINT NUMBER: 105



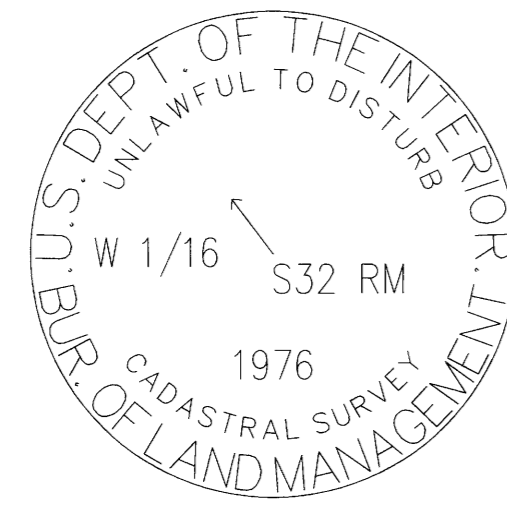
POINT NUMBER: 106



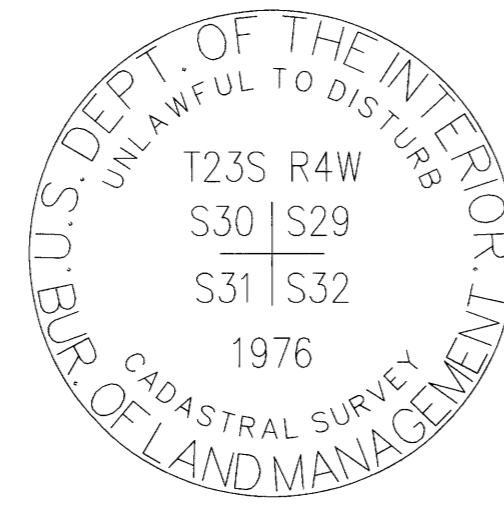
POINT NUMBER: 107



POINT NUMBER: 108



POINT NUMBER: 109



POINT NUMBER: 110

REGISTERED PROFESSIONAL LAND SURVEYOR DANIEL A. RENTON 2830 Expires 12-31-2024

100-FOUND MONUMENT

CORNER R-17, (GCDB 500300) CORNER SECTIONS 22, 23, 26 & 27 T. 23 S., R. 04 W., W.M.

AUGUST 27, 1884 WILLIAM P. WRIGHT, DEPUTY SURVEYOR UNDER CONTRACT NO. 514 (DCSO RECORDS VOLUME 6, PAGE 2307) SET POST 6" DIA., 4 FT LONG, WITH MARKED STONE 12" IN GROUND FOR SECTION CORNER MKD: T23 S23 ON NE, R4W S26 ON SE, S27 ON SW, S22 ON NW FACE WITH 2 NOTCHES ON E & S EDGES FROM WHICH: A FIR, 60" DIA. BEARS S 25' E, 92 LKS, MKD: T23S R4W S26 BT A FIR, 6" DIA. BEARS S 17' W, 25 LKS, MKD: T23S R4W S27 BT A FIR, 5" DIA. BEARS N 45' W, 40 LKS, MKD: T23S R4W S22 BT A CEDAR, 4" DIA. BEARS N 79' E, 11 LKS, MKD: T23S R4W S23 BT

APPROX. 1960 (FILED DECEMBER 1965) WILFORD N. HAINES (C.S. FILE 54/16-231) FOUND: 60" FIR, S 25' E, 92 LKS 6" FIR STUB, S 17' W, 25 LKS, SCRIBING VISIBLE ON STUB SCRIBED: 14" FIR, N 60' W, 50.0 FT 36" FIR, S 89' W, 44.5 FT 60" FIR, S 25' E, 60.72 FT, BARK SCRIBED

NOVEMBER 1965 DOUGLAS COUNTY SURVEYORS OFFICE VERNON "RAY" TRACY & CREW (C.S. FILE 54/16-18) FOUND HAINES' "T" IRON AND 3/4" IRON PIPE AND FOLLOWING BT'S: 64" D.FIR SNAG, S 25' E, 60.8 FT (FACE) BARK SCRIBED "T23S R4W S26 BT 363" THIS POSSIBLE ORIGINAL BT 21" D.FIR, N 59' W, 49.6 FT (FACE) BARK SCRIBED "363 T23S R4W S22 BT" AND CRUISERS MARKS ON FACE THIS CORNER FITS CALLS SOUTH & WEST. WE FOUND NO ORIGINAL SCRIBE

SEPTEMBER 1966 DOUGLAS COUNTY SURVEYORS OFFICE VERNON "RAY" TRACY & JACK HERITAGE (C.S. FILE 54/16-45) FOUND: HAINES' "T" IRON & 3/4" IRON PIPE AT CORNER ORIGINAL 60" NOW 64" FIR, S 25' E, 60.7 FT, RE-BARK SCRIBED, NOW SNAG 14" NOW 20" D.FIR, N 60' W, 50.0 FT, BARK SCRIBED, BUTTON ON FACE 36" NOW STUMP, S 89' W, 44.5 FT, BARK SCRIBED NEW BT'S: 8" HEMLOCK N 35' W, 22.8 FT, MKD "T23S R4W S22 CS BT" 14" HEMLOCK N 14' E, 44.1 FT, MKD "T23S R4W S26 CS BT" 9" HEMLOCK S 62' E, 63.7 FT, MKD "T23S R4W S26 CS BT" DID NOT SET BRASS CAP - CORNER LIES IN CORNER OF CUT OFF UNIT IN SECTION 27.

JUNE THROUGH SEPTEMBER 1976 BLM RESURVEY BY JAMES E. JELLEY, CADASTRAL SURVEYOR UNDER GROUP NO. 895 (DCSO RECORDS VOLUME 41, PAGE 16138-39) FROM SECTION CORNER PERPETUATED AND RECORDED BY HAINES IN 1960 AND FURTHER PERPETUATED BY TRACY IN 1966, MONUMENTED WITH A 1" "T" SHAPED IRON ROD, FIRMLY SET, PROJECTING 10" ABOVE GROUND, FROM WHICH THE REMAINS OF THE OBTS: A FIR SNAG, 65" DIA. BEARS S 25' E, 96 LKS, RE-SCRIBE "T23S R4W S2 BT 363" ON BARK BLAZE BY HAINES IN 1960 (REC. 92 LKS, TO FACE) AND THE REMAINS OF BEARING TREES MKD BY HAINES: A SAWED FIR STUMP, 36" DIA. BEARS S 89' W, 67 LKS, WITH SCRIBE MARKS "63 BT" VISIBLE ON BARK BLAZE A FIR, 24" DIA BEARS N 60' W, 77 LKS, WITH SCRIBE MARKS T23S R4W S22 BT VISIBLE ON BARK BLAZE AND BT'S MKD BY TRACY: A HEMLOCK, 20" DIA. BEARS N 12-3/4' E, 67 LKS, WITH HEALED BLAZE A HEMLOCK 10" DIA. BEARS S 63-1/2' E, 96 LKS, WITH FRAGMENTARY SCRIBE VISIBLE ON OPEN BLAZE A HEMLOCK 12" DIA. BEARS N 36-1/2' W, 34-1/2 LKS, WITH SCRIBE MARKS "T23S R S CS BT" VISIBLE ON OPEN BLAZE

AT THE CORNER POINT: SET AN IRON POST, 28" LONG, 2-1/2" DIA., 24" IN GROUND, WITH BRASS CAP MKD: "T23S R4W S22 S23 S27 S26 1976" FROM WHICH NEW BT: A FIR, 8" DIA. BEARS S 59' W, 122-1/2 LKS, MKD "T23S R4W S27 BT" RESET "T" SHAPED IRON ALONGSIDE IRON POST

NOVEMBER 1981 TO APRIL 1982 BLM RESURVEY BY JAMES E. JELLEY, CADASTRAL SURVEYOR UNDER GROUP NO. 1083 (DCSO RECORDS VOLUME 46, PAGE 17542-43) FOUND AND USED ON ABOVE REFERENCED SURVEY

JANUARY 17, 2023 GARRETT FINCH AND CREW WITH MINISTER AND GLAESER SURVEYING FOUND 3-1/4" BLM BRASS CAP, 0.4 FT ABOVE GROUND IN GOOD CONDITION WITH 3/4" IRON PIPE AND HAINES 1" BRASS CAP SOUTH OF AND ALONG SIDE FROM WHICH: 29" FIR SNAG (30 FT HIGH) BEARS N 61' W, 50.0 FT, ILLEGIBLE BARK SCRIBE WITH BT SIGN (1960) 28" FIR BEARS S 60' W, 82.4 FT TO SIDE CENTER, WITH SCABBED BLAZE (1976) 23" HEMLOCK BEARS N 36' W, 22.8 FT TO SIDE CENTER, SCABBED BLAZE WITH BT SIGN (1966) 26" HEMLOCK BEARS N 14' E, 44.0 FT TO SIDE CENTER, SCABBED BLAZE WITH BT SIGN (1966) 24" HEMLOCK BEARS S 64' E, 62.8 FT TO SIDE CENTER, SCABBED BLAZE WITH BT SIGN (1966) 36" STUMP (3 FT HIGH) BEARS S 88' W, 44.5 FT TO CENTER OF STUMP (1960) 65" STUMP (3 FT HIGH) BEARS S 22' E, 60.7 FT TO CENTER OF STUMP, WITH ILLEGIBLE SCRIBE AND CRUISER MARKS (1960) (SET CHAINING NAIL AT SIDE CENTER, BT SIGNS ON FRONT AND REAR, AND PAINTED RED BAND FOR EXISTING BT'S)

101-FOUND MONUMENT

CORNER T-17, (GCDB 500240) 1/4 CORNER OF SECTIONS 26 & 27 T. 23 S., R. 04 W., W.M.

AUGUST 27, 1884 WILLIAM P. WRIGHT, DEPUTY SURVEYOR UNDER CONTRACT NO. 514 (DCSO RECORDS VOLUME 6, PAGE 2307) SET POST 4" DIA., 4 FT LONG, WITH MARKED STONE 12" IN GROUND FOR 1/4 CORNER MKD 1/4 S ON W FACE, FROM WHICH: A FIR, 24" DIA. BEARS N 85' W, 42 LKS, MKD "1/4 S BT" A FIR, 40" DIA. BEARS S 45' E, 3 LKS MKD "1/4 S BT"

RECORD OF SURVEY

LOCATED IN A PORTION OF THE NW 1/4, NE 1/4 AND SE 1/4 OF SECTION 27 AND THE SW 1/4 OF SECTION 29 T. 23 S., R. 4 W., W.M. GREAT EXPECTATIONS AND FAST LANE-TASK B DOUGLAS COUNTY, OREGON CONTRACT NO. 1204T02DD0010 TASK ORDER NO. 140L4322F0063

FILED DATE: 11-30-2023 BY: [Signature] THIS SURVEY CONSISTS OF: MAP: M17B-72 A-F NARRATIVE: CORNER RPT: DOUGLAS COUNTY SURVEYOR

101 CONT.

APPROX. 1960 (FILED DECEMBER 1965) WILFORD N. HAINES (C.S. FILE 54/16-23) FOUND: 24" FIR N 85' W, 27.72 FT, BARK SCRIBED. CAME BACK LATER AND SCRIBE WAS CHOPPED UP STUMP OF 40" FIR, S 45' E, 1.98 FT RESCRIBED: BARK, 24" NOW 36" FIR, N 85' W, 27.7 FT SCRIBED: 12" I.CEDAR, S 69' E, 23.5 FT

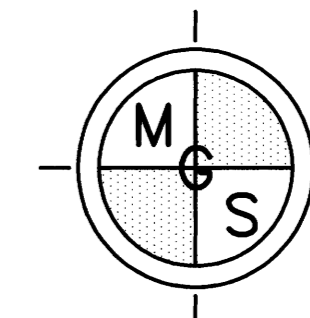
NOVEMBER 1965 DOUGLAS COUNTY SURVEYORS OFFICE VERNON "RAY" TRACE & CREW (C.S. FILE 54/16-19) ADDED 3/13/2018 FOUND: HAINES "T" IRON & 3/4" IRON PIPE AT CORNER & BT'S AS FOLLOWS: 48" D.FIR N 85' W, 27.7 FT (FACE) BARK SCRIBED "363 1/4 S27 BT" (NO ORIGINAL SCRIBE FOUND BY US, COULD BE ORIGINAL 40" BT) 14" R.CEDAR S 69' E, 23.5 FT (CENTER) "1/4 S26 BT" IN WOOD BURNED & ROTTED STUMP OF FIR S 45' E, 2.0 FT, NO SCRIBE FOUND

SEPTEMBER 1966 DOUGLAS COUNTY SURVEYORS OFFICE VERNON "RAY" TRACE & CREW (C.S. FILE 54/16-24) FOUND: HAINES "T" IRON & 3/4" IRON PIPE AT CORNER, SEE HAINES 1960 ORIGINAL 24" NOW 48" D.FIR, N 85' W, 27.7 FT, RE-BARK SCRIBED, ALIVE ORIGINAL 40" NOW BADLY DECAYED REMNANT OF BURNED STUMP, S 45' E, 2.0 FT, NO SCRIBE FOUND 12" NOW 14" I.CEDAR S 69' E, 23.5 FT, SCRIBED WITH HAINES' BUTTON ON FACE, CRACKED FROM THE GROUND UP, BEGINNING TO ROT DO NOT SET BRASS CAP NEW BT'S: 10" I.CEDAR N 54' W, 40.4 FT, MKD "1/4 S27 BT" 24" I.CEDAR S 49-1/4' E, 26.5 FT MKD "1/4 S26 CS BT" NOTE: THIS CORNER LIES SOUTH ON SLOPE OF SPUR, COURSE SOUTHWEST

JUNE THROUGH SEPTEMBER 1976 BLM RESURVEY BY JAMES E. JELLEY, CADASTRAL SURVEYOR UNDER GROUP NO. 895 (DCSO RECORDS VOLUME 41, PAGE 16138) THE 1/4 CORNER PERPETUATED AND RECORDED BY HAINES IN 1960 AND FURTHER PERPETUATED BY TRACY IN 1966, MONUMENTED WITH A 1" "T" SHAPED IRON ROD, FIRMLY SET, PROJECTING 10" ABOVE GROUND, FROM WHICH THE REMAINS OF THE OBTS: A FIR, 42" DIA. BEARS N 85' W, 42 LKS, WITH SCRIBE MARKS "BT" VISIBLE ON BARK BLAZE, AND SCRIBE MARKS "1/4 S26 BT" VISIBLE ON OPEN BLAZE AND BT'S MKD BY TRACY: A CEDAR, 25" DIA. BEARS S 50-3/4' E, 40-1/2 LKS, WITH SCRIBE MARKS "1/4 S26 BT" VISIBLE ON OPEN BLAZE A CEDAR, 10" DIA. BEARS N 55' W, 60-1/2 LKS, WITH SCRIBE MARKS "1/4 S27 BT" VISIBLE ON OPEN BLAZE AT THE CORNER POINT: SET AN IRON POST, 28" LONG, 2-1/2" DIA., 24" IN GROUND, WITH BRASS CAP MKD: "1/4 S27 S26 T23S R4W 1976" RESET "T" SHAPED IRON ROD ALONGSIDE IRON POST

JANUARY 1990 KEN HOFFINE, LS 2291 FOR LONE ROCK TIMBER CO. (M 109-56 - C.S. FILE 63/106)(SEE ALSO M 111-30 - C.S. FILE 63/106) CORNER REPORT FOUND: 1976 2-1/4" BLM BRASS CAP WITH HAINES' 3/4" T-IRON AND IDENTIFICATION BUTTON ON TOP OF BAR AND A 3/4" IRON PIPE AND THE FOLLOWING ACCESSORIES: ORIGINAL 24" D.FIR, NOW 42" BEARS N 85' W, 28.0 FT, SCRIBE MARKS ON OPEN BLAZE, NEARLY GROWN OVER OPEN BLAZE VISIBLE ORIGINAL 40" D.FIR BADLY DECAYED AND BURNED REMAINS AND STUMP HOLE BEARS S 45' E, 2.0 FT 27" I.CEDAR, BEARS S 50' E, 26.5 FT, WELL HEALED FACE, AND BLM TAG 10" I.CEDAR, BEARS N 55' W, 40.4 FT, VISIBLE SCRIBING AND BLM TAG 12" I.CEDAR, BEARS N 68' W, 23.1 FT, (REC S 68' E) VISIBLE SCRIBING AND BLM TAG CORNER LIES ON SOUTH FACING RIDGE APPROX. 70 FT BELOW A WIDE FLAT BENCH AND APPROX. 1150 FT SOUTH OF BLM GRAVEL ROAD

JANUARY 18, 2023 GARRETT FINCH AND CREW WITH MINISTER AND GLAESER SURVEYING FOUND 3-1/4" BLM BRASS CAP, 0.3 FT ABOVE GROUND IN GOOD CONDITION WITH 3/4" IRON PIPE SOUTHWEST AND ALONGSIDE, AND A 1" HAINES BRASS CAP NORTHWEST AND ALONGSIDE FROM WHICH: 28" CEDAR BEARS N 40' W, 21.8 FT TO SIDE CENTER, SCABBED BLAZE WITH BLANK LOCATION POSTER, (NO RECORD) 14" CEDAR BEARS N 44' W, 40.1 FT TO SIDE CENTER, WITH BT SIGN, NO VISIBLE BLAZING (1966) 44" FIR BEARS N 78' W, 28.1 FT TO SIDE CENTER, SCABBED BLAZE, AND BARK SCRIBE WITH BT SIGN AND HAINES WASHER (1884 & 1960) 34" CEDAR BEARS S 54' E, 25.7 FT TO SIDE CENTER, SCABBED BLAZE WITH BT SIGN (1966) (SET CHAINING NAIL AT SIDE CENTER, BT SIGNS ON FRONT AND REAR, AND PAINTED RED BAND FOR EXISTING BT'S)



MINISTER-GLAESER SURVEYING INC. 2200 E. EVERGREEN BLVD. VANCOUVER, WA 98661 (360) 694-3313

SCALE: N/A JOB NO. 22-319 DATE: 11/21/2023 CALC BY: DAR DRAWN BY: RDH CHECKED BY: DAR SHEET 4 OF 6

102--FOUND MONUMENT

CORNER R-15, (GCDB 440300)
1/4 CORNER SECTIONS 22 & 27 T. 23 S., R. 04 W., W.M.

AUGUST 27, 1884
WILLIAM P. WRIGHT, DEPUTY SURVEYOR
UNDER CONTRACT NO. 514
(DCSO RECORDS VOLUME 6, PAGE 2309)
SET POST 4" DIA. 4 FT LONG, WITH MARKED STONE 12" IN GROUND FOR 1/4 SECTION CORNER MKD "1/4 S" ON N FACE FROM WHICH:
A FIR, 30" DIA. BEARS N 25' E, 45 LKS, MKD "1/4 S BT"
A FIR, 12" DIA. BEARS S 25' W, 50 LKS, MKD "1/4 S BT"

NOVEMBER 1965
DOUGLAS COUNTY SURVEYORS OFFICE
VERNON "RAY" TRACY, MIKE STONE & JERRY LAYNE
(C.S. FILE 54/16-17)
SEARCH FOR 1/4 CORNER
FOUND 3/4" IRON PIPE FOR CORNER
66" FIR STUMP, N 25' E, 29.7 FT, NO SCRIBE FOUND-- MATCHES BEARING AND DISTANCE FOR ORIGINAL BT
NO TRACE OF ORIGINAL SOUTHWEST BT
20" D.FIR, S 77' E, 14.4 FT, FIND AXE FACE, NOT SCRIBED, NUMEROUS CRUISER'S MARKS
IRON PIPE LIES 8.0 FT NORTH OF FIRE TRAIL COURSE EAST & WEST

JUNE THROUGH SEPTEMBER 1976
BLM RESURVEY BY JAMES E. JELLEY, CADASTRAL SURVEYOR, UNDER GROUP NO. 895
(DCSO RECORDS VOLUME 41, PAGE 16149)
POINT FOR THE 1/4 SECTION CORNER AT PROPORTIONATE DISTANCE; THERE IS NO REMAINING EVIDENCE OF THE ORIGINAL CORNER.
SET AN IRON POST, 28" LONG, 2-1/2" DIA., 24" IN GROUND WITH BRASS CAP MKD "1/4 S22 S27 T23S R4W 1976" FROM WHICH:
A FIR, 4" DIA. BEARS N 80-1/2' W, 7-1/2 LKS, MKD "1/4 S22 BT"
A FIR, 4" DIA. BEARS S 1-1/2' E, 7 LKS, MKD "1/4 S27 BT"

FEBRUARY 12, 1990
DOUGLAS COUNTY SURVEYORS OFFICE
RANDALL W. SMITH & STEPHEN J. FLAUSE
(C.S. FILE 64/5-12)
FOUND A 1976 BLM 3-3/8" BRONZE CAP ON A 2-1/2 O.D. IRON PIPE PROTRUDING 3" ABOVE GROUND. 1" O.D. IRON PIPE PROTRUDES 4" ABOVE GROUND. (SOURCE UNKNOWN) BEARS N 43-1/2' E, 28.7 FT FROM BLM BRASS CAP/IRON PIPE. SEE 1965 TRACY REPORT ON IRON PIPE.
WE OPENED A 66" FIR STUMP TO THE NE OF IRON PIPE. HAD PREVIOUSLY BEEN OPENED APPROX. 1FT INTO STUMP. WE OPENED TO 15" OF CENTER, NO SCRIBING FOUND.
4" NOW 8" DIA., D.FIR WITH FULLY HEALED SINGLE BLAZE BEARS N 80-1/2' W, 5.0 FT (AGREES WITH RECORD, 1976 BLM)
4" NOW 10" DIA., D.FIR WITH FULLY HEALED BLAZE BEARS S 1-1/2' E, 4.6 FT (AGREES WITH RECORD, 1976 BLM)
NEW BT'S:
8" DIA., D.FIR, DOUBLE BLAZED & SCRIBED "1/4 S27 CS BT" BEARS S 73-1/2' E, 13.4 FT
6" DIA., D.FIR, DOUBLE BLAZED & SCRIBED "1/4 S22 CS BT" BEARS N 20' E, 11.1 FT
CORNER LIES WEST 250 FT ± FROM TERMINUS OF LOGGING ROAD DOWN GRADUAL SOUTHWESTERLY SLOPE

FEBRUARY 2009
KEN HOFFINE FOR JUPITER PROPERTIES LIMITED PARTNERSHIP
(MAP FILE M159-8)
FOUND 1976 BLM BRASS CAP
15" D.FIR BEARS S 0-1/4' W, 4.9 FT (REC. S 1-1/2' E, 4.6 FT) HEALED FACE & TAG
13" D.FIR BEARS N 78-1/2' W, 5.0 FT (REC. N 80-1/2' W, 5.0 FT) HEALED FACE & TAG
12" D.FIR BEARS S 74-1/2' E, 13.3 FT (REC. S 73-1/2' E, 13.4 FT) HEALED FACE & TAG
9" D.FIR BEARS N 19-3/4' E, 11.0 FT (REC. N 20' E, 11.1 FT) HEALED FACE & TAG
CORNER LIES ON WEST FACING SLOPE APPROX. 110 FT WEST OF ROCK ROAD

JANUARY 17, 2023
GARRETT FINCH AND CREW WITH MINISTER AND GLAESER SURVEYING
FOUND 3-1/4" BLM BRASS CAP ON IRON PIPE, 0.3 FT ABOVE GROUND IN GOOD CONDITION FROM WHICH BEARS:
12" FIR BEARS N 24' E, 11.0 FT TO SIDE CENTER, 2 SCABBED BLAZES WITH BT SIGN (1990)
14" FIR BEARS S 83' E, 13.3 FT TO SIDE CENTER, 2 SCABBED BLAZES WITH BT SIGN (1990)
18" FIR BEARS S 01-1/2' E, 4.9 FT TO SIDE CENTER, SCABBED DOUBLE BLAZE WITH BT SIGN (1976)
16" FIR BEARS N 80-1/2' W, 5.0 FT TO SIDE CENTER, 2 SCABBED BLAZES WITH BT SIGN (1976)
36" FIR BEARS N 56' E, 43.2 FT TO SIDE CENTER, WITH SCABBED BLAZE & LOCATION POSTER (NO RECORD) (SET CHAINING NAIL AT SIDE CENTER, BT SIGNS ON FRONT AND REAR, AND PAINTED RED BAND FOR EXISTING BT'S)

103--FOUND MONUMENT

CORNER R-13, (GCDB 400300)
SECTION CORNER OF SECTIONS 21, 22, 27 & 28 T. 23 S., R. 04 W., W.M.

FEBRUARY 1855
ORIGINAL - GORDON & GARDNER, CONTRACT NO. 52
(DCSO RECORDS VOLUME 6 PAGE 2276)
SET POST CORNER OF SECTIONS FROM WHICH:
A Y.OAK, 1" DIA. BEARS S 82' E, 77 LKS.
A Y.OAK, 12" DIA. BEARS N 66' E, 76 LKS.
A Y.OAK, 10" DIA. BEARS N 02' W, 107 LKS.
A Y.OAK, 12" DIA. BEARS S 09' W, 440 LKS.

AUGUST 27, 1884
WILLIAM P. WRIGHT, DEPUTY RECD SURVEYOR
UNDER CONTRACT NO. 514
(DCSO RECORDS VOLUME 6, PAGE 2308-09)
FOUND AND USED IN ORIGINAL GLO

FEBRUARY 13, 1974
BRUCE SHANER FOR PACIFIC POWER & LIGHT CO. - M 49-55
AT THE SECTION CORNER WHICH LIES AT THE INTERSECTION OF A VERY OLD NORTH-SOUTH FENCE LINE, AND AN EXTENSION OF A VERY OLD FENCE LINE FROM THE WEST, AND AN OLD GROWTH TIMBER CUTTING LINE TO THE EAST, WHICH POINT OF INTERSECTION, ACCORDING TO WITNESS KATHRYN M. HOWARD, IS TO HER KNOWLEDGE THE LOCATION OF THE ORIGINAL SECTION CORNER.
SET BRASS CAP MKD "T23S R4W S21, S22, S28, S27 1974"
8" D.FIR SCRIBED "T23S R4W S21 BT" BEARS N 62' W, 45.9'
28" D.FIR SCRIBED "T23S R4W S22 BT" BEARS N 88' E, 13.0'
28" D.FIR SCRIBED "T23S R4W S27 BT" BEARS S 50' E, 18.7'
6" D.FIR SCRIBED "T23S R4W S28 BT" BEARS S 66' W, 43.1'
NO ORIGINAL BT'S FOUND

103 CONT.

JUNE TO SEPTEMBER 1976
BLM RESURVEY BY JAMES E. JELLEY, CADASTRAL SURVEYOR, UNDER GROUP #895
(DCSO RECORDS VOLUME 41, PAGE 16148-49)
THE SECTION CORNER PERPETUATED AND RECORDED BY SHANER IN 1874, FROM TESTIMONY OF LOCAL LANDOWNERS AND AT THE INTERSECTION OF VERY OLD FENCE LINES EXTENDING NORTH, SOUTH, & WEST. THIS POSITION IS ACCEPTED AS THE BEST AVAILABLE EVIDENCE OF THE ORIGINAL CORNER, AND IS MONUMENTED WITH AN IRON POST, 1-1/2" DIA., FIRMLY SET, PROJECTING 6" ABOVE GROUND, WITH PROPERLY MARKED BRASS CAP FROM WHICH BT'S MARKED BY SHANER:
A FIR, 28" DIA. BEARS N 85-1/4' E, 19-1/2 LKS, WITH HEALED BLAZE
A FIR, 28" DIA. BEARS S 53-1/4' E, 28 LKS, WITH FRAGMENTARY SCRIBED MARKS VISIBLE ON PARTIALLY OPEN BLAZE
A FIR, 7" DIA. BEARS 68-1/4' W, 65 LKS, WITH FRAGMENTARY SCRIBED MARKS VISIBLE ON PARTIALLY OPEN BLAZE
A FIR, 9" DIA. BEARS N 64-3/4' W, 69-1/2 LKS, WITH FRAGMENTARY SCRIBE MARKS VISIBLE ON PARTIALLY OPEN BLAZE.

JANUARY 1990
(C.S. FILE 63/104-37)
KEN W. HOFFINE FOUND 2-1/2" BRASS CAP, 0.3' ABOVE GROUND IN GOOD CONDITION FROM WHICH:
12" D.F. BEARS N 62' W, 45.9 FT, WELL HEALED FACE AND B.T. TAG
10" D.F. BEARS S 66' W, 43.1 FT, WELL HEALED FACE AND B.T. TAG
30" D.F. BEARS S 50' E, 18.0 FT, WELL HEALED FACE AND B.T. TAG
32" D.F. BEARS N 88' E, 13.0 FT, WELL HEALED FACE AND B.T. TAG
PAINTED ALL FACES AND WROTE B.T. ON TREE TRUNKS OF BT'S WITH ORANGE PAINT

JANUARY 16, 2023
GARRETT FINCH AND CREW WITH MINISTER AND GLAESER SURVEYING
FOUND 2-1/2" BRASS CAP 0.5 FT ABOVE GROUND IN GOOD CONDITION FROM WHICH:
24" FIR BEARS N 61' W, 45.6 FT TO SIDE CENTER, WITH SCABBED BLAZE & BT SIGN (1974)
10" FIR SNAG BEARS S 66' W, 43.1 FT TO SIDE CENTER, WITH SCABBED BLAZE & BT/BLM SIGNS (1974)
36" STUMP (1.5 FT HIGH) BEARS S 48' E, 18.5 FT TO CENTER STUMP (1974)
24" STUMP (4 FT HIGH) BEARS N 86' E, 13.1 FT TO CENTER STUMP REMOVED BARK WITH SCRIBE MARKS T23S R4W S22 BT (1974)
(SET CHAINING NAIL AT SIDE CENTER, BT SIGNS ON FRONT AND REAR, AND PAINTED RED BAND FOR EXISTING BT'S)

ESTABLISHED THE FOLLOWING:
21" FIR BEARS S 40' E, 39.6 FT MKD "T23S R4W S27 BT"
10" FIR BEARS N 30' E, 3.4 FT MKD "T23S R4W S22 BT"
16" FIR BEARS S 72' W, 44.3 FT MKD "T23S R4W S28 BT"
(SET CHAINING NAIL AT SIDE CENTER, NAIL AND WASHER STAMPED "PLS 2830" AT BASE OF BLAZE, BT SIGNS ON FRONT AND BACK AND PAINTED RED BAND FOR NEW BT'S)

104--FOUND MONUMENT (NOT PART OF CONTRACT)

CORNER V-13, (GCDB 400200)
SECTION CORNER OF SECTIONS 27, 28, 33 & 34 T. 23 S., R. 04 W., W.M.

FEBRUARY 1855
GORDON & GARDNER
CONTRACT NO. 52
(DCSO RECORDS VOLUME 6, PAGE 2276)
SET SECTION POST FROM WHICH:
A FIR, 6" DIA. BEARS S 18' W, 11 LKS
A FIR, 3" DIA. BEARS S 60' E, 43 LKS
A MAPLE, 8" DIA. BEARS N 67' E, 10 LKS
A FIR, 3" DIA. BEARS N 46' E, 8 LKS

AUGUST 27, 1884
WILLIAM P. WRIGHT, DEPUTY SURVEYOR
UNDER CONTRACT NO. 514
(DCSO RECORDS VOLUME 6, PAGE 2299)
FOUND AND USED IN ORIGINAL GLO

JUNE THROUGH SEPTEMBER 1976
BLM RESURVEY BY JAMES E. JELLEY, CADASTRAL SURVEYOR
UNDER GROUP NO. 895
(DCSO RECORDS VOLUME 41, PAGES 16145-46)
POINT FOR THE SECTION CORNER, AT PROPORTIONATE DISTANCE, THERE IS NO REMAINING EVIDENCE OF THE ORIGINAL CORNER
SET IRON POST, 28" LONG, 2-1/2" DIA., 24" IN THE GROUND, WITH BRASS CAP MKD "T23S R4W S28 S27 S33 S34 1976" FROM WHICH:
A FIR, 18" DIA. BEARS N 69-1/2' E, 25 LKS, MKD "T23S R4W S27 BT"
A FIR, 8" DIA. BEARS S 9-1/2' E, 36 LKS, MKD "T23S R4W S34 BT"
A FIR, 5" DIA. BEARS S 27' W, 40-1/2 LKS, MKD "T23S R4W S33 BT"
A FIR, 10" DIA. BEARS N 44-3/4' W, 24 LKS, MKD "T23S R4W S28 BT"

SEPTEMBER 1990
JAMES A. BRANCH WITH BRANCH ENGINEERING
FOUND 3-1/4" BLM BRASS CAP (1976)

JANUARY 1995
DAVID L. BROWN WITH BRANCH ENGINEERING
FOUND 3-1/4" BLM BRASS CAP (1976)

JANUARY 18, 2023
GARRETT FINCH AND CREW WITH MINISTER AND GLAESER SURVEYING
FOUND 3-1/4" BLM BRASS CAP (1976)
SHOWN FOR ORIENTATION ONLY, NOT PART OF CONTRACT, NO MAINTENANCE PERFORMED THIS SURVEY

105--FOUND MONUMENT

CORNER V-15, (GCDB 440200)
1/4 CORNER OF SECTIONS 27 & 34 T. 23 S., R. 04 W., W.M.

AUGUST 27, 1884
WILLIAM P. WRIGHT, DEPUTY SURVEYOR
UNDER CONTRACT NO. 514
(DCSO RECORDS VOLUME 6, PAGE 2299)
SET POST 4" DIA., 4 FT LONG, WITH MARKED STONE 12" IN GROUND FOR 1/4 CORNER MKD "1/4 S" ON N FACE, FROM WHICH:
A CHINQUAPIN, 12" DIA. BEARS N 87' E, 55 LKS
A FIR, 40" DIA. BEARS N 67' E, 82 LKS

APPROX. 1960 (FILED DECEMBER 1965)
WILFORD N. HAINES
(C.S. FILE 54/16-23C)
SET 36" T-IRON WITH CAP
SCRIBED 8" D.FIR, N 58' E, 20.6 FT

MARCH 15, 1960
DOUGLAS COUNTY SURVEYORS OFFICE
(C.S. FILE 49/42-50)
FOUND:
ORIGINAL 40", NOW 48" FIR, N 67' E, 54.1 FT, SHOWS ORIGINAL BARK SCRIBING "1/4S" ALSO NEW BARK SCRIBING "1/4S"
ORIGINAL CHINQUAPIN BT NOW A SNAG
6" R.FIR, NEW SCRIBING BEARS N 57' E, 20.9 FT
FIND ALSO, HAINES ANGLE IRON & CAP AT CORNER
I DO NOT SET BRASS CAP AT CORNER
NEW BT:
16" R.FIR, BEARS S 41-1/2' E, 46.1 FT SCRIBED S34 CS BT
NOTE: THIS CORNER PROBABLY RENEWED BY HAINES WITHIN THE PAST YEAR BUT NOT RECORDED

NOVEMBER 1965
DOUGLAS COUNTY SURVEYORS OFFICE
VERNON "RAY" TRACY, MIKE STONE & JERRY LAYNE
(C.S. FILE 54/16-35)
FOUND:
HAINES' T-IRON, AS RECORDED IN 1960
ALL BT'S DOWN & DEAD
NEW BT'S:
18" D.FIR, N 03'W, 27.9 FT, MKD "1/4 S27 CS BT"
18" MAPLE, S 29' W, 34.3 FT, MKD "1/4 S34 CS BT"
NOTE: THIS CORNER LIES ON ROLLING NORTH SLOPE, CHANGING TO VERY STEEP

JUNE THROUGH SEPTEMBER 1976
BLM RESURVEY BY JAMES E. JELLEY, CADASTRAL SURVEYOR
UNDER GROUP NO. 895
(DCSO RECORDS VOLUME 41, PAGE 16146-47)
THE 1/4 SECTION CORNER OF SECTIONS 27 & 34, PERPETUATED AND RECORDED BY HAINES 1959, FROM ORIGINAL EVIDENCE NO LONGER IN EXISTENCE, AND FURTHER PERPETUATED BY BYRON IN 1960, AND FURTHER PERPETUATED BY TRACY IN 1965, MONUMENTS WITH A 1" "T" SHAPED IRON ROD, FIRMLY SET, PROJECTING 10" ABOVE GROUND, FROM WHICH THE REMAINS OF A BEARING TREE MKD BY HAINES:
A FIR STUMP, 8" DIA. BEARS N 55-3/4' E, 32 LKS, WITH FRAGMENTARY SCRIBE MARKS VISIBLE ON OPEN BLAZE
AND THE REMAINS OF A BEARING TREE MKD BY BYRON:
A ROOT HOLE, BEARS S 41-1/2' E, 70 LKS, WITH DOWN FIR ALONGSIDE, 18" DIA. WITH FRAGMENTARY SCRIBE MARKS VISIBLE ON OPEN BLAZE
AND BEARING TREES MKD BY TRACY:
A FIR, 24" DIA. BEARS N 5-1/2' W, 41-1/2 LKS, WITH HEALED BLAZE
A MAPLE, 24" DIA. BEARS S 26-1/2' W, 52 LKS, WITH SCRIBE MARKS "1/4 S34 CS BT" VISIBLE ON OPEN BLAZE
AT THE CORNER POINT:
SET AN IRON POST, 28" LONG, 2-1/2" DIA, 24" IN THE GROUND, WITH BRASS CAP MKD "1/4 S27 S34 T23S R4W 1976"
RESET "T" SHAPED IRON ROD ALONGSIDE IRON POST

JANUARY 1995
DAVID L. BROWN WITH BRANCH ENGINEERING
(C.S. FILE 63/161 - MAP FILE M 121-69)
FOUND 3-1/4" BLM BRASS CAP

JANUARY 18, 2023
GARRETT FINCH AND CREW WITH MINISTER AND GLAESER SURVEYING
FOUND 3-1/4" BLM BRASS CAP, 0.4 FT ABOVE GROUND IN GOOD CONDITION WITH A 1" HAINES BRASS CAP TO THE NORTH AND ALONGSIDE FROM WHICH:
22" MAPLE BEARS S 26' W, 33.3 FT TO SIDE CENTER, WITH SCABBED BLAZE & LOCATION POSTER (1965)
35" FIR BEARS N 04' W, 27.1 FT TO SIDE CENTER, SCABBED BLAZE WITH BT SIGN (1965)
24" ROTTEN STUMP (2 FT HIGH) BEARS N 54' E, 28.2 FT TO CENTER OF STUMP (1960)
(SET CHAINING NAIL AT SIDE CENTER, BT SIGNS ON FRONT AND REAR, AND PAINTED RED BAND FOR EXISTING BT'S)

106--FOUND MONUMENT

CORNER V-17, (GCDB 500200)
SECTION CORNER OF SECTIONS 26, 27, 34 & 35 T. 23 S., R. 04 W., W.M.

AUGUST 27, 1884
WILLIAM P. WRIGHT, DEPUTY SURVEYOR
UNDER CONTRACT NO 514
(DCSO RECORDS VOLUME 6, PAGE 2299-2300)
SET POST 6" DIA., 4 FT LONG, WITH MARKED STONE 12" IN GROUND FOR SECTION CORNER MKD "T23S S26" ON NE, "R4W S35" ON SE, "S34" ON SW, "S27" ON NW FACE, 2 NOTCHES ON E AND 1 ON S FACE, FROM WHICH:
A FIR, 14" DIA. BEARS N 47' W, 35 LKS, MKD "T23S R4W S 27 BT"
A FIR, 12" DIA. BEARS N 28' E, 41 LKS, MKD "T23S R4W S26 BT"
A MAPLE, 9" DIA. BEARS S 44' E, 38 LKS, MKD "T23S R4W S35 BT"
A MAPLE, 8" DIA. BEARS S 82' W, 75 LKS, MKD "T23S R4W S34 BT"

MAY 23, 1896
CARL S. NICKLIN, DEPUTY SURVEYOR
UNDER CONTRACT NO. 664
(DCSO RECORDS VOLUME 6, PAGE 2327)
FOUND AND USED IN GLO RETRACEMENT

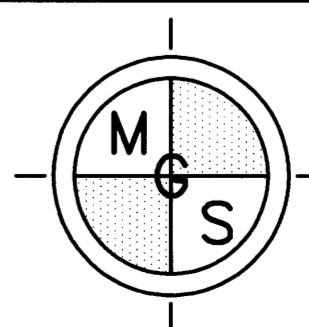
CONTINUES ON SHEET 6 OF 6

RECORD OF SURVEY

LOCATED IN A PORTION OF
THE NW 1/4, NE 1/4 AND SE 1/4 OF SECTION 27
AND THE SW 1/4 OF SECTION 29
T. 23 S., R. 4 W., W.M.
GREAT EXPECTATIONS AND FAST LANE-TASK B
DOUGLAS COUNTY, OREGON
CONTRACT NO. 1204T020D0010
TASK ORDER NO. 140L4322F0063

FILED
DATE: 11-30-2023 BY: [Signature]
THIS SURVEY CONSISTS OF:
MAP: M178-72 A-F
NARRATIVE:
CORNER RPT:
DOUGLAS COUNTY
SURVEYOR

11/21/2023
REGISTERED
PROFESSIONAL
LAND SURVEYOR
[Signature]
OREGON
JUNE 30, 1997
DANIEL A. RENTON
2830
Expires 12-31-2024



MINISTER-GLAESER
SURVEYING INC.
2200 E. EVERGREEN BLVD.
VANCOUVER, WA 98661
(360) 694-3313

SCALE: N/A
JOB NO. 22-319
DATE: 11/21/2023
CALC BY: DAR
DRAWN BY: RDH
CHECKED BY: DAR
SHEET 5 OF 6

106 CONT.

JUNE THROUGH SEPTEMBER 1976
BLM RESURVEY BY JAMES E. JELLEY, CADASTRAL SURVEYOR
UNDER GROUP NO. 895
(DCSO RECORDS VOLUME 41, PAGE 16135)
FROM THE SECTION CORNER DETERMINED AT RECORD BEARING AND DISTANCE FROM THE REMAINS OF THE OBTS:
A ROOT HOLE, BEARS N 28° E, 41 LKS, WITH DOWN FIR ALONGSIDE, 14" DIA., WITH SCRIBE MARKS
"T23S R4W S" VISIBLE ON BARK BLAZE
A ROOT HOLE, BEARS N 47° W, 35 LKS
AT THE CORNER POINT:
SET AN IRON POST 28" LONG, 2-1/2" DIA., 24" IN GROUND, WITH BRASS CAP MKD
"T23S R4W S27 S26 S34 S35 1976"
FROM WHICH NEW BEARING TREES:
A FIR, 8" DIA. BEARS N 57-3/4° E, 13-1/2 LKS, MKD "T23S R4W S26 BT"
A FIR, 8" DIA. BEARS S 77-1/4° E, 60 LKS, MKD "T23S R4W S35 BT"
A FIR, 6" DIA. BEARS S 34-1/4° W, 28-1/2 LKS, MKD "T23S R4W S34 BT"
A FIR, 5" DIA. BEARS N 71° W, 7-1/2 LKS, MKD "T23S R4W S27 BT"

JANUARY 1990
(M 111-30 - C.S. FILE 63/106)
KEN HOFFINE FOUND 2-1/2" BLM BRASS CAP AND THE FOLLOWING ACCESSORIES:
6" GRAND FIR BEARS N 71° W, 4.8 FT, WELL HEALED FACE AND BLM TAG
10" DOUG-FIR BEARS N 58° E, 8.5 FT, WELL HEALED FACE AND BLM TAG
9" DOUG-FIR BEARS S 77° E, 39.8 FT, WELL HEALED FACE AND BLM TAG
7" DOUG-FIR BEARS S 34-1/4° W, 18.5 FT, WELL HEALED FACE AND BLM TAG

CORNER LIES .3 FT ABOVE GROUND ON FLAT BENCH NORTH OF STEEP NORTH FACING SLOPE AND 1.6 CHAINS SOUTH OF VERY OLD LOGGING SKID ROAD

MAY THOUGH NOVEMBER 2007
BLM DEPENDENT RESURVEY
BY A BERT SKEESICK, CADASTRAL SURVEYOR
AND ROBERT H BROWNING, SURVEY TECH
UNDER GROUP NO. 2168
(DCSO RECORDS VOLUME 57, PAGE 22595)
THE CORNER OF SECTIONS 26, 27, 34 & 35, MONUMENTED WITH AN IRON POST, 2-1/2" DIA., FIRMLY SET, PROJECTING 3" ABOVE GROUND, WITH BRASS CAP (PROPERLY) MKD, FROM WHICH THE REMAINS OF THE BT'S MKD BY JELLEY IN 1976:
A ROOTHOLE BEARS N 57-3/4° E, 8.9 FT, WITH FALLEN FIR SNAG, 12" DIA. LYING ALONGSIDE, WITH HEALED BLAZE
A FIR, 13" DIA. BEARS S 76-1/2° E, 39.6 FT, WITH HEALED BLAZE (RECORD S 77-1/4° E)
A FIR SNAG, 7" DIA. BEARS S 34-1/4° W, 18.8 FT, WITH A HEALED BLAZE
A FIR SNAG, 7" DIA. BEARS N 71° W, 5.0 FT, WITH HEALED BLAZE
AND NEW BEARING TREES:
A FIR, 16" DIA. BEARS N 49-1/4° E, 19.8 FT, MKD "T23S R4W S26 BT"
A FIR, 13" DIA. BEARS N 30° W, 34.2 FT, MKD "T23S R4W S27 BT"
EACH NEW BEARING TREE HAS A 2-1/2" X 1/4" MAGNETIC NAIL (MAG NAIL) DRIVEN AT THE BASE RIGHT SIDE-CENTER
(NAD 1983 (CORS 96)) LATITUDE: 43°32'00.93"N LONGITUDE: 123°08'49.89"W

JANUARY 18, 2023
GARRETT FINCH AND CREW WITH MINISTER AND GLAESER SURVEYING
FOUND 3-1/4" BLM BRASS CAP, 0.3 FT ABOVE GROUND IN GOOD CONDITION FROM WHICH:
17" FIR BEARS S 78° E, 39.6 FT TO SIDE CENTER, SCABBED BLAZE WITH BT SIGN (1976)
14" FIR SNAG (12 FT HIGH) BEARS N 22° W, 34.2 FT TO SIDE CENTER, WITH PARTIAL VISIBLE SCRIBE "T23S R4W S" (2007)
20" FIR BEARS N 49° E, 20.3 FT TO SIDE CENTER, WITH SCABBED BLAZE AND BT SIGN (2007)
(SET CHAINING NAIL AT SIDE CENTER, BT SIGNS ON FRONT AND REAR, AND PAINTED RED BAND FOR EXISTING BT'S)

ESTABLISHED THE FOLLOWING:
7" FIR BEARS N 14° W, 26.4 FT TO SIDE CENTER, MKD "T23S R4W S27 BT"
6" FIR BEARS S 68° W, 36.2 FT TO SIDE CENTER, MKD "T23S R4W S34 BT"
(SET CHAINING NAIL AT SIDE CENTER, NAIL AND WASHER STAMPED "PLS 2830" AT BASE OF BLAZE, BT SIGNS ON FRONT AND BACK AND PAINTED RED BAND FOR NEW BT'S)

107-FOUND MONUMENT

MGS POINT NUMBER 107
CORNER U-5, (GCDB 200220)
S 1/16 CORNER OF SECTIONS 29 & 30 T. 23 S., R. 04 W., W.M.

JUNE TO SEPTEMBER 1976
BLM RESURVEY BY JAMES E. JELLEY, CADASTRAL SURVEYOR, UNDER GROUP #895
(DCSO RECORDS VOLUME 41, PAGES 16159-60)
SET AN IRON POST, 28" LONG, 2-1/2" DIA., 24" IN THE GROUND WITH BRASS CAP MKD, "S 1/16 S30 S29 1976" FROM WHICH:
A FIR, 10" DIA., BEARS S 27° E, 33-1/2 LKS, MKD "S 1/16 S29 BT"
A FIR, 9" DIA., BEARS S 56° W, 38-1/2 LKS, MKD "S 1/16 S30 BT"

FEBRUARY 4, 2003
CARL A. SWEEDEN WITH SWEEDEN LAND SURVEYING
(C.S. FILE 65/45-3)
FOUND 3-1/4" BLM BRASS CAP, 0.4 FT ABOVE GROUND IN GOOD CONDITION FROM WHICH:
22" D.FIR BEARS S 27° E, 33-1/2 LKS, SCAR VISIBLE, FIR HAS 2 STEMS WITH SCAR ON NW STEM, DIA. MEASURED ON NW STEM 6 FT ABOVE GROUND
9" FIR NOW 19" FIR STUMP TIPPED OVER, ROOT HOLE BEARS S 56° W, 38-1/2 LKS, SCAR VISIBLE FENCE LINE RUNNING NORTH/SOUTH BEARS WEST 25 FT
NEW BT:
11" D.FIR BEARS N 15° E, 24.78 FT, SCRIBED "S 1/16 S29 BT" WITH TAG

FEBRUARY 16, 2023
GARRETT FINCH AND CREW WITH MINISTER AND GLAESER SURVEYING
FOUND 3-1/4" BLM BRASS CAP ON PIPE, 0.3 FT ABOVE GROUND IN GOOD CONDITION FROM WHICH:
18" FIR STUMP BEARS N 18° E, 24.9 FT TO SIDE CENTER, HEALED BLAZE WITH BT SIGN (2003)
37" DOWN FIR, ROOT HOLE BEARS S 26° E, 22.3 FT, WITH HEALED BLAZE & BT SIGN (1976)
60" ROOT BALL, ROTTED, TRUNK BURIED, BEARS S 56° W, 27.4 FT TO ROOT HOLE (1976)
(SET CHAINING NAIL AT SIDE CENTER, BT SIGNS ON FRONT AND REAR, AND PAINTED RED BAND FOR EXISTING BT'S)

ESTABLISHED THE FOLLOWING:
14" FIR BEARS S 72° E, 39.1 FT TO SIDE CENTER, MKD "S 1/16 S29 BT"
10" FIR BEARS S 24° W, 41.7 FT TO SIDE CENTER, MKD "S 1/16 S30 BT"
(SET CHAINING NAIL AT SIDE CENTER, NAIL AND WASHER STAMPED "PLS 2830" AT BASE OF BLAZE, BT SIGNS ON FRONT AND BACK AND PAINTED RED BAND FOR NEW BT'S)

108-FOUND MONUMENT

CORNER V-6, (GCDB 220200)
W 1/16 CORNER OF SECTIONS 29 & 32 T. 23 S., R. 04 W., W.M.

JUNE TO SEPTEMBER 1976
BLM RESURVEY BY JAMES E. JELLEY, CADASTRAL SURVEYOR, UNDER GROUP #895
(DCSO RECORDS VOLUME 41, PAGES 16157-58)
SET A BRASS TABLET, 3-1/4" DIA., 3-1/2" STEM, IN DRILL HOLE IN SANDSTONE BEDROCK, WITH TOP MKD, "W 1/16 S29 S32 1976", FROM WHICH:
A CEDAR, 30" DIA., BEARS N 15-3/4° E., 81 LKS, MKD "W 1/16 S 29 BT"
AN IRON POST, 28" LONG, 2-1/2" DIA., SET 24" IN GROUND FOR A REFERENCE MONUMENT, BEARS S 39° E, 65-1/2 LKS, WITH A BRASS CAP MKD "W 1/16 S32 RM 1976" WITH AN ARROW TO THE CORNER

108 CONT.

FEBRUARY 17, 2023
GARRETT FINCH AND CREW WITH MINISTER AND GLAESER SURVEYING
FOUND 3-1/4" BLM BRASS DISK SET FLUSH IN STONE IN GOOD CONDITION FROM WHICH BEARS:
A WIRE FENCE RUNNING EAST/WEST BEARS SOUTH 1 FT
(SEE FOUND MONUMENT 109 BELOW FOR REFERENCE MONUMENT TO THIS CORNER)
36" CEDAR BEARS N 15-3/4° E, 53.2 FT TO SIDE CENTER WITH HEALED BLAZES
(SET CHAINING NAIL AT SIDE CENTER, BT SIGN ON FRONT AND REAR, AND PAINTED RED BAND FOR EXISTING BT)

ESTABLISHED THE FOLLOWING:
12" FIR BEARS N 76-1/4° W, 21.1 FT TO SIDE CENTER, MKD "W 1/16 S29 BT"
(SET CHAINING NAIL AT SIDE CENTER, NAIL AND WASHER STAMPED "PLS 2830" AT BASE OF BLAZE, BT SIGNS ON FRONT AND BACK AND PAINTED RED BAND FOR NEW BT)

109-FOUND MONUMENT

RM TO THE WEST 1/16 CORNER OF SECTIONS 29 & 32 T. 23 S., R. 04 W., W.M.

JUNE TO SEPTEMBER 1976
BLM RESURVEY BY JAMES E. JELLEY, CADASTRAL SURVEYOR, UNDER GROUP #895
(DCSO RECORDS VOLUME 41, PAGES 16157-58)
AN IRON POST, 28" LONG, 2-1/2" DIA., SET 24" IN GROUND FOR A REFERENCE MONUMENT, BEARS S 39° E, 65-1/2 LKS, WITH A BRASS CAP MKD "W 1/16 S32 RM 1976" WITH AN ARROW TO THE CORNER

FEBRUARY 16, 2013
GARRETT FINCH AND CREW FROM MINISTER AND GLAESER SURVEYING
FOUND 3-1/4" BLM BRASS DISK ON IRON PIPE, 0.5 FT ABOVE GROUND FROM WHICH:
A 6 STRAND BARB WIRE FENCE BEARS 0.5 FT EAST
RM BEARS S 40° E, 42.39' FROM W 1/16 CORNER, SEE MONUMENT 108 ABOVE

110-FOUND MONUMENT

CORNER V-5, (GCDB 200200)
SECTION CORNER OF SECTIONS 29, 30, 31 & 32 T. 23 S., R. 04 W., W.M.

FEBRUARY 1855
ORIGINAL - GORDON & GARDNER, CONTRACT NO. 52
(DCSO RECORDS VOLUME 6, PAGE 2285)
SET POST OF SECTIONS 29, 30, 31 & 32 FROM WHICH:
A FIR, 5" DIA. BEARS S 71° W, 16 LKS.
A FIR, 4" DIA. BEARS N 20° W, 16 LKS.
A MAPLE, 6" DIA. BEARS S 57° W, 28 LKS.
A FIR, 10" DIA. BEARS N 53° E, 811 LKS.

JUNE TO SEPTEMBER 1976
BLM RESURVEY BY JAMES E. JELLEY, CADASTRAL SURVEYOR, UNDER GROUP #895
(DCSO RECORDS VOLUME 41, PAGE 16158)
POINT FOR CORNER OF SECTIONS 29, 30, 31 & 32 AT PROPORTIONATE DISTANCE; THERE IS NO REMAINING EVIDENCE OF THE ORIGINAL CORNER.
SET IRON POST, 28" LONG, 2-1/2" DIA., 24" IN GROUND, WITH BRASS CAP MKD:
"T23S R4W S 30 S 29 S 31 S32 1976" FROM WHICH:
A FIR, 5" DIA. BEARS N 68-1/4° E, 97 LKS, MKD "T23S R4W S29 BT"
A FIR, 6" DIA. BEARS S 53-3/4° E, 61 LKS, MKD "T23S R4W S32 BT"
A CEDAR, 5" DIA. BEARS S 85-1/4° W, 39-1/2 LKS MKD "T23S R4W S31 BT"
NO OTHER SUITABLE TREES AVAILABLE WITHIN LIMITS

FEBRUARY 17, 2023
GARRETT FINCH AND CREW WITH MINISTER AND GLAESER SURVEYING
FOUND 3-1/4" BLM BRASS CAP, 0.2 FT ABOVE GROUND IN GOOD CONDITION FROM WHICH:
20" FIR BEARS S 48° E, 41.9 FT TO SIDE CENTER, WITH HEALED BLAZE (1976)
(SET CHAINING NAIL AT SIDE CENTER, BT SIGNS ON FRONT AND REAR, AND PAINTED RED BAND FOR EXISTING BT)

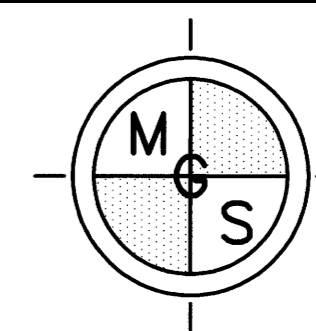
ESTABLISHED THE FOLLOWING:
22" FIR BEARS N 50° E, 6.9 FT TO SIDE CENTER, MKD "T23S R4W S29 BT"
5/8" IRON ROD WITH 2" ALUMINUM CAP BEARS N 45° W, 25.00 FT, MKD:
T23S R4W SEC 30 25FT RM PLS2830 2023
5/8" IRON ROD WITH 2" ALUMINUM CAP BEARS S 45° W, 25.00 FT, MKD:
T23S R4W SEC 31 25FT RM PLS2830 2023
(SET CHAINING NAIL AT SIDE CENTER, NAIL AND WASHER STAMPED "PLS 2830" AT BASE OF BLAZE, BT SIGNS ON FRONT AND BACK AND PAINTED RED BAND FOR NEW BT)

RECORD OF SURVEY

LOCATED IN A PORTION OF
THE NW 1/4, NE 1/4 AND SE 1/4 OF SECTION 27
AND THE SW 1/4 OF SECTION 29
T. 23 S., R. 4 W., W.M.
GREAT EXPECTATIONS AND FAST LANE-TASK B
DOUGLAS COUNTY, OREGON
CONTRACT NO. 1204T020D0010
TASK ORDER NO. 140L4322F0063

FILED
DATE: 11-30-2023 BY: [Signature]
THIS SURVEY CONSISTS OF:
MAP: M17B-72 A-F
NARRATIVE:
CORNER RPT:
DOUGLAS COUNTY SURVEYOR

REGISTERED PROFESSIONAL LAND SURVEYOR
Daniel A. Renton
OREGON
JUNE 30, 1997
DANIEL A. RENTON 2830
Expires 12-31-2024



MINISTER-GLAESER SURVEYING INC.
2200 E. EVERGREEN BLVD.
VANCOUVER, WA 98661
(360) 694-3313

SCALE: N/A
JOB NO. 22-319
DATE: 11/21/2023
CALC BY: DAR
DRAWN BY: RDH
CHECKED BY: DAR
SHEET 6 OF 6