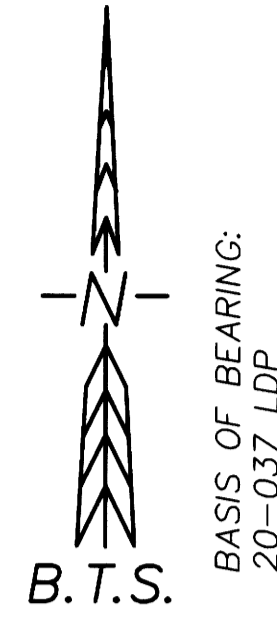


RECORD OF SURVEY

LOCATED IN SECTIONS 3 & 4, T.24S., R.2W., W.M.
AND SECTION 34, T.23S., R.2W., W.M.
DOUGLAS COUNTY, OREGON

FILED
Date: 11-1-2021 By: [Signature]
This Survey Consists of:
Map: M178-42
Narrative:
Corner Rpt.:
DOUGLAS COUNTY SURVEYOR



NARRATIVE:

THE PURPOSE OF THIS SURVEY IS TO MARK A PORTION OF THE BOUNDARY OF WEYERHAEUSER CO. PROPERTY LOCATED IN SECTIONS 3 & 4, TOWNSHIP 24 SOUTH, RANGE 2 WEST, W.M., AND SECTION 34, TOWNSHIP 23 SOUTH, RANGE 2 WEST, W.M., FOR TIMBER MANAGEMENT PURPOSES.

I ACCEPT THE MONUMENTS AS FOUND THEN POST AND MARK THE BOUNDARY AS SHOWN WITH 5 1/2" STEEL POST PAINTED ORANGE WITH ORANGE FLAGGING, AND QUARTER BLAZE TREES WITHIN 3-5 FEET OF LINE, BLAZES PAINTED ORANGE. I NAIL YELLOW WEYCO STUMP TAGS ON WEYERHAEUSER TREES, BELOW STUMP HEIGHT FACING THE BOUNDARY.

THIS SURVEY WAS PERFORMED IN THE FIELD FROM SEPT 22, 2021 TO OCTOBER 20, 2021 BY RUSSELL BADGLEY, ISAAC JACOBSEN, AND JAKE BUZZARD, WITH COMPUTATIONS AND DRAFTING BY RUSSELL BADGLEY.

SURVEY CONTROL PROCEDURE:

A STATIC GPS NETWORK SURVEY WAS PERFORMED UTILIZING LEICA 1200 GPS RECEIVERS, AND CONTROLLED BY AN NGS OPUS SOLUTION ON A PROJECT CONTROL POINT. THE RESULTING GEODETIC COORDINATES WERE PROJECTED INTO THE BELOW DEFINED COORDINATE SYSTEM. POSTED LINES AND CONTROLLING CORNERS WERE TIED BY CONVENTIONAL TRAVERSE WITH A LEICA TS15 & LEICA TC1203 TOTAL STATIONS FROM THE STATIC OR RTK GPS CONTROL POINTS, AND ADJUSTED IN LEICA GEO OFFICE BY THE METHOD OF LEAST SQUARES.

COORDINATE SYSTEM NAME: 20-037 LDP
PROJECTION: TRANSVERSE MERCATOR
REFERENCE DATUM: NAD 83 (2011) (EPOCH 2010.00)
ELLIPSOID: GRS 1980
LATITUDE OF GRID ORIGIN: 42° 29' 30"W
CENTRAL MERIDIAN: 122° 54' 45"W
FALSE NORTHING: 50,000.00 FT
FALSE EASTING: 150,000.00 FT
CENTRAL MERIDIAN SCALE: 1.00015400

CORNER NO.	LATITUDE	LONGITUDE
1 - 400640	43°30'45.97409"N	122°55'56.07018"W
2 - 400700	43°31'15.17446"N	122°55'54.27790"W
3 - 440700	43°31'16.91213"N	122°55'21.42448"W

RECORDS:

- R1 = TRANSIT SURVEY BY GLEN MCCHESENEY, BAUGHMAN SURVEYING SERVICE - 1975 FOR WEYERHAEUSER CO.
- R2 = M178-14 ~ RUSSELL BADGLEY, BTS SURVEYING, INC. - 2020
- R3 = M172-72 ~ DANIEL W. BAKER, BAKER AND ASSOCIATES - 2016
- R4 = DCSO CORNER NOTES
- R5 = ORIGINAL GLO SURVEY BY CHANDLER, CONTRACT #619, PLAT NO. 238 - 1893

LEGEND:

- ⊙ = FOUND PLSS MONUMENT AS NOTED IN THE CORNER DESCRIPTIONS
- ⊗ = FOUND PLSS MONUMENT SEE M178-14 FOR CORNER DESCRIPTIONS
- ()R# = DIMENSION PER RECORD REFERENCE NUMBER
- ⊕ = CORNER NOTE REFERENCE NUMBER
- = POSTED BOUNDARY LINE WITH 5 1/2" STEEL POSTS
- = PREVIOUSLY POSTED BOUNDARY LINE PER M178-14
- = MEASURED BOUNDARY LINE

CORNER DESCRIPTIONS:

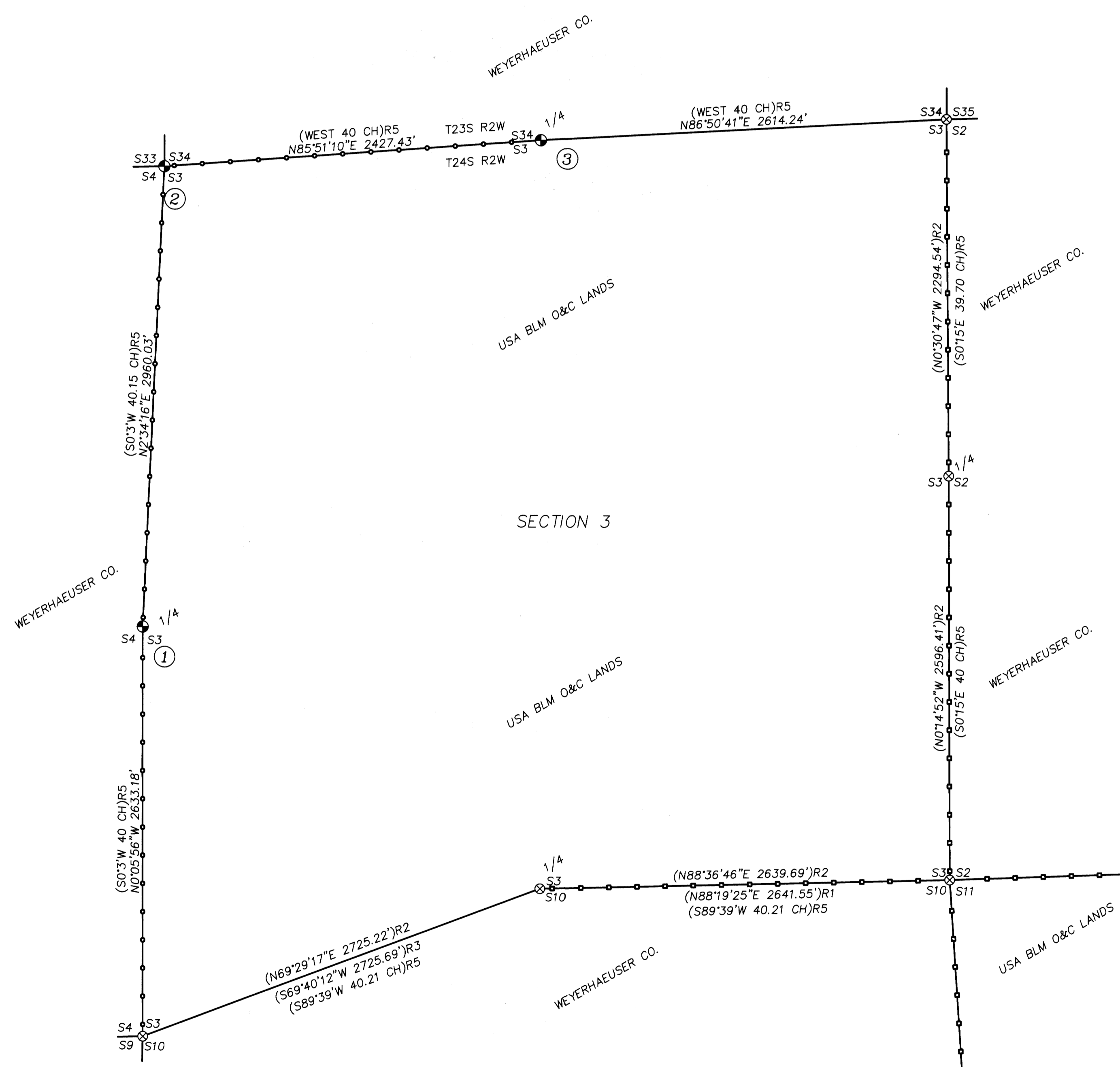
ALL NEW BEARING TREES HAVE DOUBLE BLAZED FACES WITH A BRASS WASHER STAMPED "BADGLEY PLS70716" NAILED INTO THE LOWER BLAZE. BEARINGS ARE TAKEN TO THE CENTER OF THE TREE AT THE ROOT CROWN AND DISTANCES ARE MEASURED TO A NAIL IN THE ROOT CROWN AT THE SIDE AND CENTER OF THE TREE WITH A TOTAL STATION. ALL BEARING TREES HAVE A 6" ORANGE BAND PAINTED AROUND THE TREE AND THE BLAZED FACE PAINTED ORANGE AND BEARING TREE SIGNS NAILED TO THE TREE.

- 1/4 S3/S4(T24S) PLSS ID NO. 400640
FD. A 1 1/2" IRON PIPE BY DCSO IN 1968 PER CS FILE 54/27-225, FIRMLY SET AND PROJECTING 4" ABOVE THE GROUND, WITH A 2 1/2" BRASS CAP MARKED:

FROM WHICH BEARING TREES BY WEYERHAEUSER IN 1954:
A 30" CEDAR BEARS N.53°15'E., 29.7 FT (N.50°E., 28.6' TO "W" NAIL)R4
A 36" D. FIR STUMP BEARS S.75°15'W., 17.3 FT (S.75°W., 15.7' TO "W" NAIL)R4
AND BEARING TREES BY DCSO IN 1968:
A 20" HEMLOCK BEARS N.23°30'E., 14.2 FT (N.18°E., 14.4')R4
A 20" HEMLOCK BEARS N.68°15'W., 12.1 FT (N.69°W., 12.3')R4
AND BEARING TREES BY BAKER IN 2016:
A 10" CEDAR BEARS S.26°15'E., 17.7 FT (S.26°E., 18.5')R4
A 15" HEMLOCK BEARS S.44°00'W., 13.0 FT (S.39°W., 13.1')R4
- S3/S4(T24S) & S33/S34(T23S) PLSS ID NO. 400700
FD. A 1 1/2" IRON PIPE BY DCSO IN 1969 PER CS FILE 54/27-161, FIRMLY SET 6" BELOW THE SURFACE, AT THE LOWER CENTER OF A LARGE ROOT WAD, WITH A 2 1/2" BRASS CAP MARKED:

FROM WHICH THE ORIGINAL BEARING TREES:
A 52" D. FIR BEARS S.25°15'E., 43.1 FT (S.27°E., 43.0')R4
AND BEARING TREES BY THE DCSO IN 1969:
A 22" HEMLOCK BEARS N.56°15'E., 13.7 FT (N.49°E., 14.0')R4
A 27" HEMLOCK BEARS S.74°15'W., 46.2 FT (S.74°W., 45.5')R4
AND BEARING TREES BY DCSO IN 1979:
A 36" HEMLOCK BEARS S.84°15'W., 50.8 FT (S.84°00'W., 51.5')R4
AND NEW BEARING TREES:
A 12" HEMLOCK BEARS N.56°45'W., 16.1 FT SCRIBED "T23S R2W S33 BT" ON DOUBLE BLAZE
- 1/4 S3(T24S)/S34(T23S) PLSS ID NO. 440700
FD. A 1 1/2" IRON PIPE BY DCSO IN 1969 PER CS FILE 54/27-164 FIRMLY SET AND PROJECTING 4" ABOVE THE GROUND, WITH A 2 1/2" BRASS CAP MARKED:

FROM WHICH BEARING TREES BY CHANDLER IN 1893:
A ROOT HOLE BEARS N.86°45'E., 12.0 FT (S.76°30'E., 12.5')R4
A ROTTEN STUMP BEARS N.8°30'W., 5.2 FT (N.4°00'W., 5.3')R4
AND BEARING TREES BY OTHERS:
A 18" HEMLOCK BEARS N.0°45'W., 32.6 FT W/HEALED BLAZE (NO RECORD)
AND NEW BEARING TREES:
A 13" HEMLOCK BEARS N.37°15'E., 25.0 FT SCRIBED "1/4 S34 BT" ON DOUBLE BLAZE
A 12" HEMLOCK BEARS S.36°15'E., 31.2 FT SCRIBED "1/4 S4 BT" ON DOUBLE BLAZE



REGISTERED PROFESSIONAL LAND SURVEYOR
[Signature]
OREGON
NOVEMBER 15, 2007
RUSSELL BADGLEY
70716
RENEWS: 12-31-2021

BTS SURVEYING, INC.
348 SE JACKSON ST., ROSEBURG, OR 97470
(541) 673-0966 russell@btssurveying.com

SCALE: 1" = 500'	FOR: WEYERHAEUSER CO. BURNT MTN. 5000	JOB #: 21-062
DATE: OCT. 29, 2021		FILE: 21-062_BurntMtn5000.DWG
		SHEET 1 OF 1