

RECORD OF SURVEY

LOCATED IN SECTIONS 22 & 28
T.25S., R.1W., W.M.
DOUGLAS COUNTY, OREGON

FILED
Date: 2-4-2021 By: [Signature]
This Survey Consists of:
Map: M178-23
Narrative: [Signature]
Corner Rpt.: [Signature]
DOUGLAS COUNTY
SURVEYOR

NARRATIVE:

THE PURPOSE OF THIS SURVEY IS TO MARK A PORTION OF THE BOUNDARY OF SENECA CO. PROPERTY LOCATED IN SECTION 22 AND SECTION 28, TOWNSHIP 25 SOUTH, RANGE 1 WEST, W.M. FOR TIMBER MANAGEMENT PURPOSES. A FIRE RECENTLY BURNED THROUGH THIS AREA AND THE TIMBER IS TO BE SALVAGE HARVESTED.

I ACCEPT THE MONUMENTS AS FOUND, UNLESS OTHERWISE NOTED THEN POST AND MARK THE BOUNDARY AS SHOWN WITH 5 1/2" STEEL POST PAINTED RED WITH RED FLAGGING, AND QUARTER BLAZE TREES WITHIN 3-5 FEET OF LINE, BLAZES PAINTED RED.

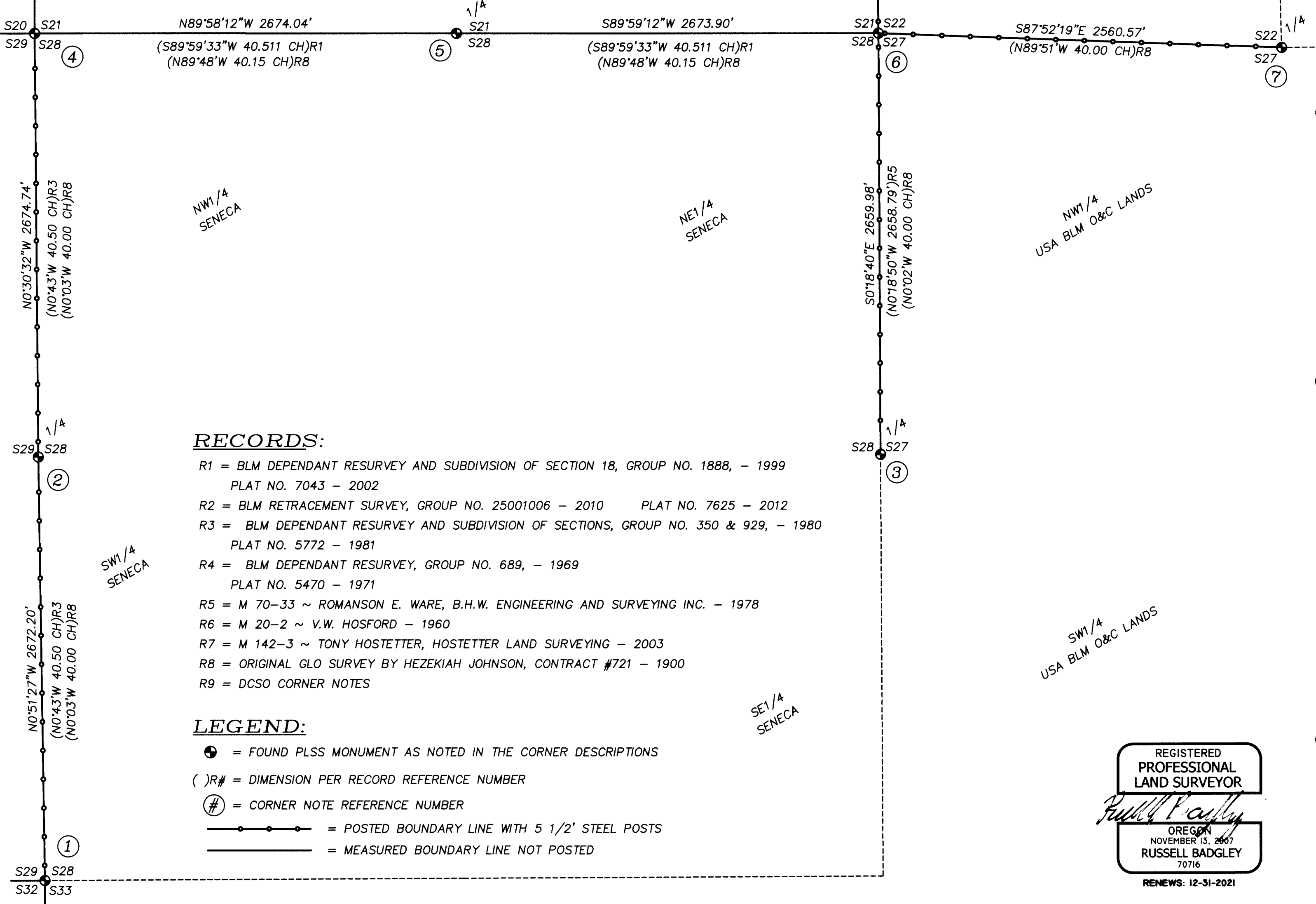
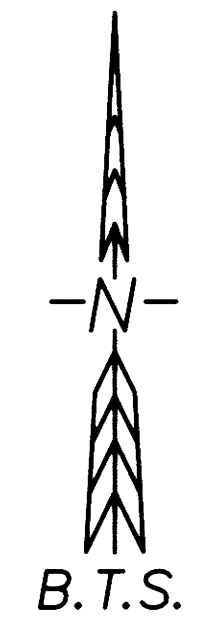
THIS SURVEY WAS PERFORMED IN THE FIELD FROM NOVEMBER 16, 2020 TO JANUARY 13, 2021 BY RUSSELL BADGLEY, ISAAC JACOBSEN, JAKE BUZZARD, AND ALLYN STONGE, WITH COMPUTATIONS AND DRAFTING BY ADAM DEGROOT AND RUSSELL BADGLEY.

SURVEY CONTROL PROCEDURE:

A STATIC GPS NETWORK SURVEY WAS PERFORMED UTILIZING LEICA 1200 GPS RECEIVERS, AND CONTROLLED BY AN NGS OPUS SOLUTION ON A PROJECT CONTROL POINT. THE RESULTING GEODETIC COORDINATES WERE PROJECTED INTO THE BELOW DEFINED COORDINATE SYSTEM. POSTED LINES AND CONTROLLING CORNERS WERE TIED BY CONVENTIONAL TRAVERSE WITH LEICA TS15 & LEICA TC1203 TOTAL STATIONS FROM THE STATIC OR RTK GPS CONTROL POINTS, AND ADJUSTED IN LEICA GEO OFFICE BY THE METHOD OF LEAST SQUARES.

COORDINATE SYSTEM NAME: 20-090 LDP
PROJECTION: TRANSVERSE MERCATOR
REFERENCE DATUM: NAD 83 (2011) (EPOCH 2010.00)
ELLIPSOID: GRS 1980
LATITUDE OF GRID ORIGIN: 43° 22' 00"N
CENTRAL MERIDIAN: 122° 48' 00"W
FALSE NORTHING: 50,000.00 IFT
FALSE EASTING: 150,000.00 IFT
CENTRAL MERIDIAN SCALE: 1.000130

CORNER NO.	LATITUDE	LONGITUDE
1 - 300200	43°21'51.15671"N	122°49'13.85249"W
2 - 300240	43°22'17.54223"N	122°49'14.40271"W
3 - 400240	43°22'17.68631"N	122°48'02.13432"W
4 - 300300	43°22'43.95476"N	122°49'14.73334"W
5 - 340300	43°22'43.94585"N	122°48'38.53085"W
6 - 400300	43°22'43.95379"N	122°48'02.33015"W
7 - 440300	43°22'43.01360"N	122°47'27.68786"W
8 - 400340	43°23'09.90623"N	122°48'02.78295"W
9 - 400400	43°23'35.01592"N	122°48'03.63448"W
10 - 440400	43°23'35.11290"N	122°47'29.63410"W



RECORDS:

- R1 = BLM DEPENDANT RESURVEY AND SUBDIVISION OF SECTION 18, GROUP NO. 1888, - 1999 PLAT NO. 7043 - 2002
- R2 = BLM RETRACEMENT SURVEY, GROUP NO. 25001006 - 2010 PLAT NO. 7625 - 2012
- R3 = BLM DEPENDANT RESURVEY AND SUBDIVISION OF SECTIONS, GROUP NO. 350 & 929, - 1980 PLAT NO. 5772 - 1981
- R4 = BLM DEPENDANT RESURVEY, GROUP NO. 689, - 1969 PLAT NO. 5470 - 1971
- R5 = M 70-33 ~ ROMANSON E. WARE, B.H.W. ENGINEERING AND SURVEYING INC. - 1978
- R6 = M 20-2 ~ V.W. HOSFORD - 1960
- R7 = M 142-3 ~ TONY HOSTETTER, HOSTETTER LAND SURVEYING - 2003
- R8 = ORIGINAL GLO SURVEY BY HEZEKIAH JOHNSON, CONTRACT #721 - 1900
- R9 = DCSO CORNER NOTES

LEGEND:

- = FOUND PLSS MONUMENT AS NOTED IN THE CORNER DESCRIPTIONS
- ()# = DIMENSION PER RECORD REFERENCE NUMBER
- ① = CORNER NOTE REFERENCE NUMBER
- = POSTED BOUNDARY LINE WITH 5 1/2" STEEL POSTS
- = MEASURED BOUNDARY LINE NOT POSTED

REGISTERED PROFESSIONAL LAND SURVEYOR
OREGON
NOVEMBER 13, 2007
RUSSELL BADGLEY
70716
RENEWS: 12-31-2021

CORNER DESCRIPTIONS:

- 1) S28/S29/S32/S33 PLSS ID NO. 300200
FD. A 1" IRON POST BY GODFREY WITH THE DCSO IN 1961 PER CS FILE 52/30, FIRMLY SET AND PROJECTING 13" ABOVE THE GROUND, WITH A 2 1/2" BRASS CAP MARKED:
T255 R1W
S29/S28
S32/S33
1961
FROM WHICH BEARING TREES BY DCSO IN 1961:
A 19" D.FIR, BURNED BY FIRE & NOW A 4 FT. HIGH STUMP WITH 6" NAIL IN THE TOP, BEARS N.41°00'W., 4.3 FT W/HEALED BLAZE (N.30°W., 4.9')R9
A 25" D.FIR, BURNED BY FIRE & NOW A 4 FT. HIGH STUMP WITH A 6" NAIL IN THE TOP, BEARS N.45°30'E., 25.6 FT W/HEALED BLAZE (N.44°E., 26.3')R9
A 17" D.FIR, BURNED BY FIRE & NOW A 4 FT. HIGH STUMP WITH A 6" NAIL IN THE TOP, BEARS S.34°45'E., 7.7 FT W/HEALED BLAZE (S.39°E., 7.6')R9
A 10" D.FIR, BURNED BY FIRE & NOW A 4 FT. HIGH STUMP WITH A 6" NAIL IN THE TOP, BEARS S.31°30'W., 14.4 FT W/HEALED BLAZE (S.31°W., 14.6')R9
AND NEW REFERENCE MONUMENTS:
A 5/8"x30" IRON ROD WITH 2" ALUM. CAP MKD. "RM1 2020 PLS70716" BEARS S.80°53'00"W. 12.71 FT
A 5/8"x30" IRON ROD WITH 2" ALUM. CAP MKD. "RM2 2020 PLS70716" BEARS N.73°0'26"E. 24.30 FT
- 2) 1/4 S28/S29 PLSS ID NO. 300240
FD. THE ORIGINAL STONE WITH CHISELED "X" ON TOP & PART OF "1/4" ON THE WEST SIDE FIRMLY SET IN PLACE, WITH A DILAPIDATED PILE OF STONE ±2 FT. WEST. I SET A 1 1/2" IRON POST, 21" IN THE GROUND AND BURY THE STONE ON THE WEST SIDE, WITH A COLLAR OF STONE 2" WIDE AND 8" HIGH, AND A 2 1/2" BRASS CAP MARKED:
T255 R1W
1/4
S29
S28
2021
PLS 70716
FROM WHICH A BEARING TREE BY THE BLM IN 1978:
A 19" D. FIR, BURNED BY FIRE AND NOW DEAD (NOT CUT) BEARS N.60°45'W., 10.5 FT WITH HEALED BLAZE (N.72 3/4°W., 26 LKS FROM 1978 USBLM BRASS CAP)R3
AND A NEW BEARING TREE:
A 12" D. FIR, BURNED BY FIRE & NOW A 4 FT. HIGH STUMP WITH A 6" NAIL IN THE TOP, BEARS S.18°45'W., 13.4 FT SCRIBED "1/4 S29 BT" ON DOUBLE BLAZE
AND A NEW REFERENCE MONUMENT:
A 5/8"x30" IRON ROD WITH A 2" ALUM. CAP MARKED "RM1 2021 PLS70716" BEARS S.35°18'23"E., 12.79 FT.
FROM WHICH A 2 1/2" IRON POST BY JELLEY WITH THE BLM IN 1978, PER GROUP #350 & #929, AT THE PROPORTIONED LOCATION, FIRMLY SET AND PROJECTING 8" FROM THE GROUND WITH A SMALL COLLAR OF STONE BEARS N.84°23'28"E., 7.49 FT, WITH A 3 1/4" BRASS CAP.
- 3) 1/4 S27/S28 PLSS ID NO. 400240
FD. A 2 1/2" GALVANIZED IRON POST BY ROMANSO WARE IN 1978 PER M70-33, FIRMLY SET AND PROJECTING 19" ABOVE THE GROUND WITH A MOUND OF STONE ON THE NORTH SIDE, WITH A 3" BRASS CAP MARKED:
T255 R1W
1/4
S28
S27
1978
PLS7005
FROM WHICH BEARING TREES BY WARE IN 1978:
A 12" D. FIR, BURNED BY FIRE & NOW A 4 FT. HIGH STUMP WITH A 6" NAIL IN THE TOP, BEARS S.39°00'W., 16.5 FT WITH HEALED DOUBLE BLAZE (S.44°W., 16.8')R5
A 13" D. FIR, BURNED BY FIRE & NOW A 4 FT. HIGH STUMP WITH A 6" NAIL IN THE TOP, BEARS N.62°30'E., 16.0 FT WITH HEALED DOUBLE BLAZE (N.70°E., 16.1')R5
AND NEW REFERENCE MONUMENTS:
A 5/8"x30" IRON ROD WITH 2" ALUM. CAP MKD. "RM1 PLS70716" BEARS S.40°35'10"E. 23.33 FT
A 5/8"x30" IRON ROD WITH 2" ALUM. CAP MKD. "RM2 PLS70716" BEARS N.26°53'16"W. 26.48 FT
- 4) S20/S21/S28/S29 PLSS ID NO. 300300
FD. A 2 1/2" IRON POST BY THE BLM IN 1999 PER GROUP #1888, FIRMLY SET, IN THE EAST EDGE OF THE ROOT BASE OF A BURNED AND DEAD D. FIR, WITH A 3 1/4" BRASS CAP MARKED:
T255 R1W
S20/S21
S29/S28
1999
FROM WHICH THE ORIGINAL BEARING TREES:
A 20" MADRONE, BURNED BY FIRE & NOW A 4 FT. HIGH STUMP WITH A 6" NAIL IN THE TOP, BEARS N.68°45'W., 17.1 FT W/HEALED BLAZE (N.65 1/2°W., 27 LKS)R1
AND BEARING TREES BY TRACY:
A 12" MADRONE, BURNED BY FIRE & NOW A 4 FT. HIGH STUMP WITH A 6" NAIL IN THE TOP, BEARS N.115°E., 33.3 FT W/HEALED BLAZE (N.1 1/4°E., 51 LKS)R1
A 15" D.FIR, BURNED BY FIRE & NOW A 4 FT. HIGH STUMP WITH A 6" NAIL IN THE TOP, BEARS S.83°15'W., 13.0 FT W/HEALED BLAZE (S.85°W., 20 LKS)R1
A 6" D.FIR, BURNED BY FIRE & NOW A 4 FT. HIGH STUMP WITH A 6" NAIL IN THE TOP, BEARS N.43°45'W., 7.7 FT W/HEALED BLAZE (N.38°W., 11 LKS)R1
AND BEARING TREES BY JELLEY WITH THE BLM IN 1978:
A 10" D. FIR, BURNED BY FIRE & NOW A 4 FT. HIGH STUMP WITH A 6" NAIL IN THE TOP, BEARS N.66°15'E., 12.4 FT W/HEALED BLAZE & BURNED (N.65°E., 19 LKS)R1
AND NEW REFERENCE MONUMENTS:
A 5/8"x30" IRON ROD WITH 2" ALUM. CAP MKD. "RM1 2021 PLS70716" BEARS N.40°41'51"E. 13.11 FT
A 5/8"x30" IRON ROD WITH 2" ALUM. CAP MKD. "RM2 2021 PLS70716" BEARS S.41°49'33"E. 17.00 FT
AND THE 1 1/2" IRON POST ALONG SIDE (SOUTH 0.5 LKS)R1
- 5) 1/4 S21/S28 PLSS ID NO. 340300
FD. A 2 1/2" IRON POST BY THE BLM IN 1999 PER GROUP #1888, FIRMLY SET AND PROJECTING 6" ABOVE THE GROUND, WITH A 3 1/4" BRASS CAP MARKED:
T255 R1W
1/4
S21
S28
1999
FROM WHICH BEARING TREES BY THE BLM IN 1999:
A 8" D. FIR BEARS N.4°30'W., 29.9 FT WITH HEALED BLAZE (N.3°W., 45 LKS)R1
AND NEW REFERENCE MONUMENTS:
A 5/8"x30" IRON ROD WITH 2" ALUM. CAP MKD. "RM1 PLS70716" BEARS N.59°46'25"E. 16.64 FT
A 5/8"x30" IRON ROD WITH 2" ALUM. CAP MKD. "RM2 PLS70716" BEARS S.30°07'50"E. 17.44 FT
- 6) S21/S22/S27/S28 PLSS ID NO. 400300
FD. A 3" BRASS TABLET BY THE BLM IN 1999 PER GROUP #1888, IN ORIGINAL STONE FIRMLY SET AND PROJECTING 12" ABOVE THE GROUND, MKD:
T255 R1W
S21/S22
S28/S27
1999
FROM WHICH THE ORIGINAL BEARING TREE:
A 23" HEMLOCK, BURNED BY FIRE & NOW A 4 FT. HIGH STUMP WITH A 6" NAIL IN THE TOP, BEARS S.38°15'E., 23.1 FT W/HEALED BLAZE (S.38 1/4°E., 35 LKS)R1
AND BEARING TREES BY TRACY:
A 13" CEDAR, BURNED BY FIRE & NOW A 4 FT. HIGH STUMP WITH A 6" NAIL IN THE TOP, BEARS S.7°00'W., 16.9 FT W/HEALED BLAZE (S.7 1/4°W., 25 LKS)R1
A 20" HEMLOCK, BURNED BY FIRE & NOW A 4 FT. HIGH STUMP WITH A 6" NAIL IN THE TOP, BEARS N.54°00'W., 17.3 FT W/HEALED BLAZE (N.53 1/2°W., 27 LKS)R1
AND NEW REFERENCE MONUMENTS:
A 5/8"x30" IRON ROD WITH 2" ALUM. CAP MARKED "RM1 2020 PLS70716" BEARS N.73°49'05"E. 9.92 FT
A 5/8"x30" IRON ROD WITH 2" ALUM. CAP MARKED "RM2 2020 PLS70716" BEARS N.41°21'21"W., 11.4 FT
AND THE 1 1/2" IRON POST ALONG SIDE (SOUTH 0.8 LKS)R1
- 7) 1/4 S22/S27 PLSS ID NO.440300
FD. A 3 1/4" BRASS TABLET BY THE BLM IN 2010 PER GROUP #25001006, IN THE ORIGINAL BOULDER, FIRMLY SET AND PROJECTING 14" ABOVE THE GROUND, MARKED:
T255 R1W
1/4
S22
S27
2010
FROM WHICH BEARING TREES BY SAVELAND OF THE BLM IN 2010:
A 7" D. FIR BEARS S.20°30'W., 22.8 FT W/HEALED BLAZE, PARTIALLY BURNED (S20 1/4°W., 22.8')R2
A 9" D. FIR BEARS N.76°30'W., 15.0 FT W/HEALED BLAZE, PARTIALLY BURNED (N.76 1/2°W., 15.0')R2
AND NEW BEARING TREES:
A 8" D. FIR BEARS N.89°15'E., 2.7 FT SCRIBED "1/4 S22 BT" ON DOUBLE BLAZE
A 11" D. FIR BEARS S.24°30'E., 10.8 FT SCRIBED "1/4 S27 BT" ON DOUBLE BLAZE
- 8) 1/4 S21/S22 PLSS ID NO. 400340
FD. A 1 1/2" IRON POST BY DCSO IN 1966 PER CS FILE 52/30, FIRMLY SET WITH A 12" HIGH COLLAR OF STONE AND PROJECTING 12" ABOVE THE COLLAR, WITH A 2 1/2" BRASS CAP MARKED:
T255
1/4
S21
S22
2021
PLS 70716
FROM WHICH THE ORIGINAL BEARING TREES:
A TRIPLE TRUNKED MADRONE BEARS N.57°45'W., 35.2 FT (N.58°W., 37.6')R2
AND BEARING TREES BY THE DCSO IN 1966:
A 15" D. FIR BEARS S.45°15'E., 13.1 FT W/ HEALED DOUBLE BLAZE (S.45 1/4°E., 13.3')R2
A 12" D. FIR BEARS N.22°15'W., 28.9 FT W/HEALED DOUBLE BLAZE (N.22°W., 28.5')R2
AND A NEW BEARING TREE:
A 18" D. FIR BEARS N.69°00'E., 16.1 FT SCRIBED "1/4 S22 BT" ON DOUBLE BLAZE
- 9) S15/S16/S21/S22 PLSS ID NO. 400400
FD. THE ORIGINAL CORNER TREE A 18" CHINQUAPIN NOW BURNED BY FIRE. I SAW OFF THE CHINQUAPIN AT 6" HIGH AND THE STUMP IS HOLLOW. AT THE CORNER LOCATION IN THE HOLLOW STUMP I SET A 5/8"x30" IRON ROD WITH A 2" ALUMINUM CAP MARKED:
T255 R1W
S15/S16
S21/S22
2021
PLS 70716
FROM WHICH THE BEARING TREES BY HOSFORD IN 1960:
A 17" HEMLOCK BURNED BY FIRE & NOW A 4 FT. HIGH STUMP WITH A 6" NAIL IN THE TOP, BEARS N.83°15'E., 29.5 FT W/HEALED BLAZE (N.83 1/2°E., 29.7')R2
A 16" HEMLOCK BURNED BY FIRE & NOW A 4 FT. HIGH STUMP WITH A 6" NAIL IN THE TOP, BEARS S.74°00'E., 18.4 FT W/HEALED DOUBLE BLAZE (S.73 3/4°E., 18.2')R2
A 15" YEW BURNED BY FIRE & NOW A 4 FT. HIGH STUMP WITH A 6" NAIL IN THE TOP, BEARS S.12°15'W., 14.9 FT W/PARTIALLY HEALED BLAZE (S.13 3/4°W., 15.0')R2
A 6" YEW BURNED BY FIRE & NOW A 2 FT. HIGH STUMP WITH A 6" NAIL IN THE TOP, BEARS N.34°45'W., 13.7 FT W/PARTIALLY HEALED BLAZE (N.34 3/4°W., 13.6')R2
AND NEW REFERENCE MONUMENTS:
A 5/8"x30" IRON ROD WITH 2" ALUM. CAP MKD. "RM1 2020 PLS70716" BEARS N.74°45'19"W. 15.17 FT
A 5/8"x30" IRON ROD WITH 2" ALUM. CAP MKD. "RM2 2020 PLS70716" BEARS S.20°53'38"W. 23.18 FT
AND A WITNESS POST BY DCSO IN 1969 PER CS FILE 52/30,
A 1 1/2" IRON POST, FIRMLY SET AND PROJECTING 9" ABOVE THE GROUND, WITH A 2 1/2" BRASS CAP BEARS S.15°59'55"W. 1.57 FT (S.16°01'02"W. 1.57 FT)R2. I STAMP THE BRASS CAP WITH "RM" AND LEAVE ORIGINAL MARKINGS.
- 10) 1/4 S15/S22 PLSS ID NO. 440400
FD. A 1" IRON POST BY THOMAS SHRUM IN 1963 PER CS FILE 51/254, FIRMLY SET AND PROJECTING 9" ABOVE THE GROUND, WITH A 2 1/2" ALUMINUM CAP MARKED:
T255 R1W
S15
S22
1963
FROM WHICH BEARING TREES BY SHRUM IN 1963:
A 30" HEMLOCK STUMP FALLEN OVER WITH A ROTHOLE WHICH BEARS (N.73°E., 36.0')R9
A 12" CEDAR SNAG NOW FALLEN AND ROTTEN WITH A ROTHOLE WHICH BEARS (S.34°W., 7.2')R9
AND A BEARING TREE BY DCSO IN 1966:
A 24" CEDAR STUMP BEARS S.24°30'E., 33.3 FT W/SCRIBE MARKS "4 S2" VISIBLE ON OPEN ROTTED BLAZE (S.24°E., 33.4')R9
AND NEW BEARING TREES:
A 18" D. FIR BEARS N.5°00'W., 25.8 FT SCRIBED "1/4 S15 BT" ON DOUBLE BLAZE
A 12" D. FIR BEARS N.48°30'E., 30.4 FT SCRIBED "1/4 S15 BT" ON DOUBLE BLAZE
A 18" D. FIR BEARS S.77°30'E., 14.9 FT SCRIBED "1/4 S22 BT" ON DOUBLE BLAZE
A 13" D. FIR BEARS S.48°45'W., 17.0 FT SCRIBED "1/4 S22 BT" ON DOUBLE BLAZE
A SMALL CREEK, COURSE NORTHEAST, IS SOUTH APPROX. 28 FT AND EAST APPROX. 43 FT

BTS SURVEYING, INC.
348 SE JACKSON ST., ROSEBURG, OR 97470
(541) 673-0966 adam@btssurveying.com

SCALE: 1" = 500'
DATE: JAN 15, 2021

FOR: SENECA JONES TIMBER COMPANY
WILLIAMS RIDGE

JOB #: 20-090
FILE: 20-090_WILLIAMS RIDGE.DWG
SHEET 1 OF 1