

RECORD OF SURVEY

LOCATED IN THE
NE 1/4 OF THE SW 1/4 SECTION 2
TOWNSHIP 29 SOUTH, RANGE 5 WEST, WILLAMETTE MERIDIAN
DOUGLAS COUNTY, OREGON

FILED
Date: 12-17-2020 By: *NA*
This survey consists of:
Map: M178-18 A-F
Narrative:
Corner Pp. 6
DOUGLAS COUNTY
SURVEYOR

NARRATIVE

THE PURPOSE OF THIS SHEET ONLY PERTAINED TO MODIFYING (ELIMINATING) THE TEWA AT TWO LOCATIONS, AND TO MODIFY THE MONUMENTS SET ON THE NORTH AND WEST LINE OF THE NE 1/4 OF THE SW 1/4 SECTION 2. THE BREAKDOWN OF SECTION 2 WAS RECOMPUTED IN THIS SURVEY SEE SHEET 1 OF THIS SURVEY FOR DETAILS.

CORNER NOTES:

CORNER VISITED DURING M166-42/ M171-73

(143858)

WEST 1/16 CORNER SECTION 35, T28S-R5W AND SECTION 2, T29S-R5W
FOUND 3-1/4" BLM BRASS CAP
DATED 1988
BT REFERENCES:
1) FOUND 25" FIR WITH HEALED FACE
N 34° E - 18.15'
2) FOUND 8" FIR WITH HEALED FACE
S 30° E - 15.51'

(1829703005) NOT HELD FOR CENTER 1/4 SEE SHEET 1

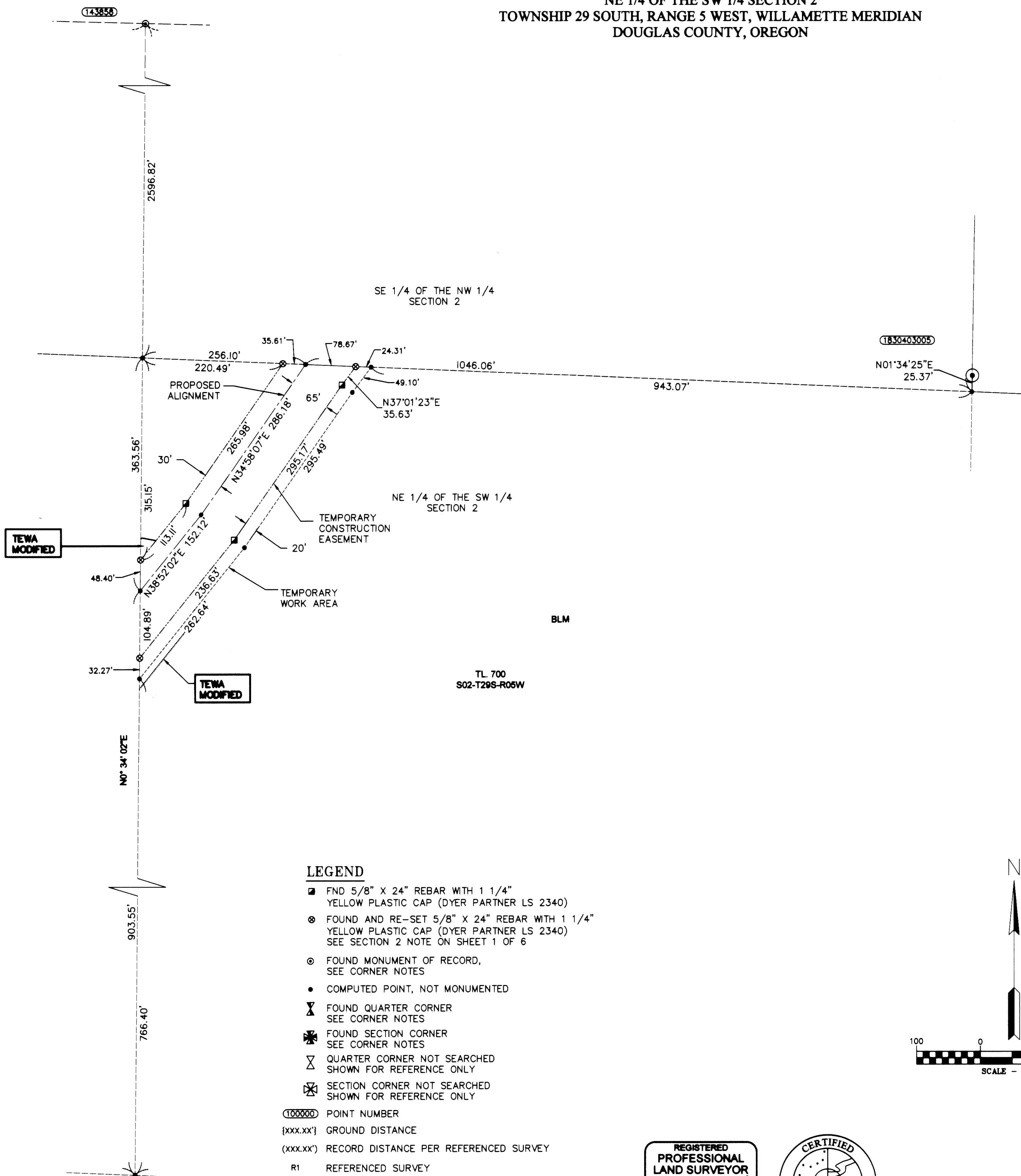
CENTER 1/4 CORNER SECTION 2, T29S-R5W
FOUND 2-1/2" BRASS CAP "PLS 2391"
DATED 1994
BT REFERENCES:
1) FOUND 48" FIR
W/ BLM TAG
N 29° E - 53.2' TO FACE
2) FOUND 10" OAK
OPEN FACED BLAZE "C1/2 S2"
S 54° W, 16.7'
3) FOUND 12" MAPLE
WITH HEALED BLAZE
N 72° E, 24.3'
4) FOUND 27" FIR
WITH HEALED BLAZE
N 11° W, 49.0'

(1829803007)

SOUTH 1/4 CORNER SECTION 2, T29S-R5W
FOUND 2-1/2" COUNTY SURVEYOR BRASS CAP
DATED 1961
BT REFERENCES:
1) FOUND 15" MADRONE
WITH HEALED FACE
N 10° W - 8.5'
2) FOUND 10" MADRONE
WITH VISIBLE SCRIBE
N 44° E, 30.0'
3) FOUND 9" MADRONE
WITH VISIBLE SCRIBE
S 61° E, 8.8'
4) FOUND 19" CEDAR
WITH HEALED FACE
S 78° W, 19.5'

(1829803009)

NORTHWEST CORNER SECTION II, T29S-R5W
FOUND 2-1/2" COUNTY SURVEYOR BRASS CAP
DATED 1962
BT REFERENCES:
1) FOUND 29" PINE
WITH VISIBLE SCRIBING
N 32° W - 28.5' TO FACE
2) FOUND 30" PINE
WITH HEALED BLAZE
N 32° E, 37.5'
3) FOUND 37" FIR
WITH HEALED FACE
S 68° W, 63.3'
4) FOUND 16.5" OAK
WITH HEALED FACE
S 25° E, 21.8'



LEGEND

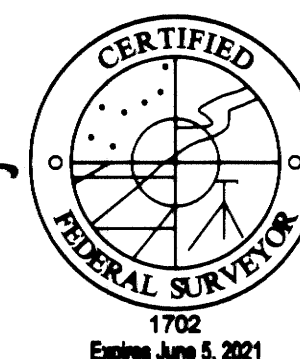
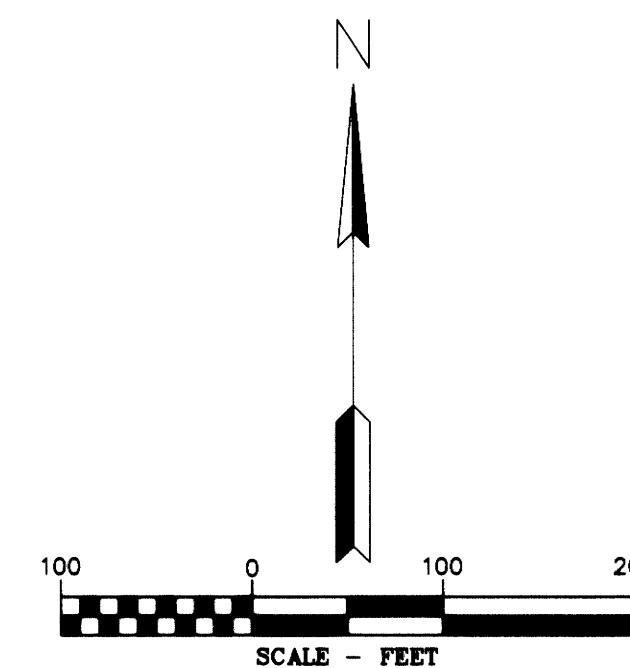
- FND 5/8" X 24" REBAR WITH 1 1/4" YELLOW PLASTIC CAP (DYER PARTNER LS 2340)
- ⊙ FOUND AND RE-SET 5/8" X 24" REBAR WITH 1 1/4" YELLOW PLASTIC CAP (DYER PARTNER LS 2340) SEE SECTION 2 NOTE ON SHEET 1 OF 6
- ⊙ FOUND MONUMENT OF RECORD, SEE CORNER NOTES
- COMPUTED POINT, NOT MONUMENTED
- △ FOUND QUARTER CORNER SEE CORNER NOTES
- ✱ FOUND SECTION CORNER SEE CORNER NOTES
- ▽ QUARTER CORNER NOT SEARCHED SHOWN FOR REFERENCE ONLY
- ⊠ SECTION CORNER NOT SEARCHED SHOWN FOR REFERENCE ONLY
- ⊙ POINT NUMBER
- {xxx.xx} GROUND DISTANCE
- {xxx.xx} GROUND DISTANCE PER REFERENCED SURVEY
- R1 REFERENCED SURVEY
- PROPOSED ALIGNMENT
- - - - - TEMPORARY CONSTRUCTION EASEMENT
- TEMPORARY WORK AREA
- LINE PER MAP OF SURVEY NO. M171-73

REFERENCE SURVEYS:

- 1) RECORD OF SURVEY BY MARK SMALLEY SURVEY M 119-2 DATED 1993
- 2) RECORD OF SURVEY BY GEO. J. WENDEROTH SURVEY M5-38 DATED 1957
- 3) RECORD OF SURVEY RM 2-47 BY H.N. HOOVER DATED APRIL, 1973
- 4) COUNTY SURVEY M171-73 - DATED DECEMBER 3, 2019
- 5) COUNTY SURVEY M 157-37 BY KRISTIAN O. DEGROOT DATED FEBRUARY 4, 2011
- 6) BLM DEPENDENT RESURVEY APPROVED JANUARY 9, 1992
- 7) COUNTY SURVEY NO. M166-42 DATED SEPTEMBER 11, 2015

AREA

TEMPORARY CONSTRUCTION EASEMENT	1.03 ACRES
TEMPORARY WORK AREA	0.26 ACRES



THE DYER PARTNERSHIP ENGINEERS & PLANNERS, INC.
1330 Teakwood Avenue / Coos Bay, Oregon 97420
(541) 269-0732 / WWW.DYERPART.COM

PACIFIC CONNECTOR GAS PIPELINE PROJECT
PACIFIC CONNECTOR GAS PIPELINE, LP
RECORD OF SURVEY
SECTION 2
TOWNSHIP 29 SOUTH, RANGE 5 WEST, W.M.
DOUGLAS COUNTY, OREGON

DRAWN BY: RAA	DATE: 9-25-2020	ISSUED FOR BID:	SCALE: 1" = 100'
CHECKED BY:	DATE:	ISSUED FOR CONSTRUCTION:	
APPROVED BY:	DATE:	DRAWING NUMBER:	SHEET 5 OF 6