

SECTION 9 AND 10 NOTE:

DURING THE COURSE OF THIS SURVEY IT WAS DETERMINED THAT SECTION 9 HAS BEEN SURVEYED AND RESURVEYED. WITH SECTION CORNERS AND QUARTER CORNER WHICH HAVE BEEN SET AND RE-SET CAUSING MULTIPLE CORNER POSITIONS FOR THE CORNERS IN SECTION 9.

M 5-38 BY GEORGE WENDEROTH IN 1957. HOLDS THE ORIGINAL SW & NE OF SECTION 10 AND THE NW OF SECTION 10 PER CS 5/130-2 & SETS THE 1/4 S9/S10, N 1/16 S9/S10, W 1/16 S3/S10, 1/4 S3/S10, E 1/16 S3/S10.

WENDEROTH MEASURES THE WEST LINE 39 FT. LONGER & THE NORTH LINE 61 FT. LONGER THAN MARKHAM BUT SETS THE MONUMENTS AT THE APPROXIMATE PROPORTIONATE POSITIONS.

RM 2-47 BY H.N. HOOVER IN 1973. HOLDS THE NORTH & WEST 1/4 CORNERS OF SECTION 10, SUBDIVISIONS SECTION 10 AND SETS THE C 1/4 & CN 1/16 OF SECTION 10

M 119-2 BY MARK SMALLEY IN 1993. REJECTS THE CS 5/130-2 & M 5-38 MONUMENTS BECAUSE THEY ARE OUT OF POSITION AND RE-COMPUTES THE PROPORTIONATE POSITION OF THE NE CORNER OF SECTION 9 HOLDING THE SAME ORIGINAL CORNERS AS CS 5/130-2 (NW & SE OF SECTION 9 & THE NW & SE OF SECTION 9). SUBDIVIDES SECTION 9 AND SETS THE N 1/4 E 1/4 C 1/4 & CW 1/16 OF SECTION 9.

MANUAL OF SURVEYING INSTRUCTIONS (2009) REFERENCES INCLUDE:

§ 3-137: "... A DECISION TO SET ASIDE PREVIOUSLY FIXED LOCAL SURVEY LEGAL SUBDIVISION CORNERS MUST BE SUPPORTED BY EVIDENCE THAT GOES BEYOND MERE DEMONSTRATION OF TECHNICAL ERROR, REASONABLE DISCREPANCIES BETWEEN FORMER AND NEW MEASUREMENT, AND LESS THAN STRICT ADHERENCE TO RESTORATION AND SUBDIVISION RULES. WERE THE FEDERAL GOVERNMENT OBLIGED TO OPEN THE QUESTION AS TO THE LOCATION OF A PARTICULAR TRACT OR TRACTS OVER TECHNICAL DIFFERENCES OR REASONABLE DISCREPANCIES, CONTROVERSIES WOULD CONSTANTLY ARISE, AND RESURVEYS AND READ JUDICATION WOULD BE INTERMINABLE. THE LAW GIVES THESE ACTIVITIES REPOSE. ..."

§ 6-48: "THE AGE, POSITION, AND DEGREE TO WHICH A LOCAL CORNER HAS BEEN RELIED ON BY ALL AFFECTED LANDOWNERS MAY LEAD TO ITS ADOPTION AS THE BEST REMAINING EVIDENCE OF THE POSITION OF THE ORIGINAL CORNER WHEN A LOCAL REESTABLISHMENT OF A LOST CORNER OR A LOCAL ESTABLISHMENT OF A LEGAL SUBDIVISION CORNER HAS BEEN MADE BY PROPER METHODS WITHOUT GROSS ERROR, IT WILL ORDINARILY BE ACCEPTABLE. MONUMENTS OF UNKNOWN ORIGIN MUST BE JUDGED ON THEIR OWN MERITS, BUT THESE MONUMENTS SHOULD NEVER BE REJECTED OUT OF HAND WITHOUT CAREFUL STUDY. ..."

BASED ON THE MONUMENTS FOUND ON THE GROUND AND OCCUPATION ON THE GROUND THIS SURVEY DETERMINED TO DO THE FOLLOWING:

SECTION 9 - HOLD THE MONUMENTS ESTABLISHED BY SURVEY M 119-2 BY MARK SMALLEY IN 1993.

SECTION 10 - HOLD THE MONUMENTS ESTABLISHED BY SURVEY M 5-38 BY GEORGE WENDEROTH IN 1957, BECAUSE SURVEY RM 2-47 BY H.N. HOOVER IN 1973 USED THE WENDEROTH CORNERS TO CONTROL A SUBDIVISION INTERSECTION 10.

THIS CAUSES TWO CORNERS FOR THE SECTION CORNER COMMON TO SECTIONS 3,4,9 AND 10 AND TWO QUARTER CORNERS COMMON TO SECTIONS 9 AND 10. WITH THE SMALLEY CORNERS CONTROLLING SECTION 9 AND THE WENDEROTH CORNERS CONTROLLING SECTION 10.

FOR THE SECTION LINE BETWEEN SECTION 9 AND 10 THIS SURVEY IS HOLDING THE LINE PER THE MONUMENTS ESTABLISHED BY SURVEY M 119-2 BY MARK SMALLEY IN 1993.

FOR THE N 1/16 CORNER COMMON TO SECTION 9 AND 10 IT WAS DETERMINED TO HOLD THE POSITION AS ESTABLISHED BY THE MONUMENTS ESTABLISHED BY SURVEY M 5-38 BY GEORGE WENDEROTH IN 1957.

CORNER NOTES:

(141815) NORTHWEST CORNER SECTION 10, T29S-R5W FOUND 2" ALUMINUM CAP "LS 2354" DATED 1993

- BT REFERENCES: 1) FOUND 46" DOUBLE FIR WITH ROSEBURG RESOURCES TAG, VISIBLE BLAZE N 64° W, 15.0' 2) FOUND 20" CEDAR WITH ROSEBURG RESOURCES TAG, BLAZED AND SCRIBED N 68° E, 22.8' 3) FOUND 11.5" FIR WITH ROSEBURG RESOURCES TAG S 58° E, 12.4' 4) FOUND 40.5" FIR WITH ROSEBURG RESOURCES TAG, BLAZED S 2° W, 43.8' (N.2°W,RI)

(141818) NORTH 1/4 CORNER SECTION 9, T29S-R5W FOUND 2" ALUMINUM CAP "LS 2354" DATED 1993

- BT REFERENCES: 1) FOUND 21" ALDER N 63° W - 27.1' 2) FOUND 37" TRIPLE CEDAR WITH ROSEBURG RESOURCES TAG, BLAZE N 00° E, 283.0' 3) FOUND 26" FIR WITH ROSEBURG RESOURCES TAG S 48° W, 180.0' (S.50°W,RI)

(1829703007) CENTER-WEST 1/16 CORNER SECTION 10, T29S-R5W FOUND 5/8" IRON ROD

- BT REFERENCES: 1) SET 9" MAPLE SCRIBED "BT" N 52° E - 9.8' TO NAIL SIDE CENTER

(1829703018) FOUND A 3/4" IRON PIPE. PER SURVEY NO. M5-38 THIS POINT WAS NOT HELD FOR THE NORTH 1/16 CORNER BETWEEN SECTIONS 9 AND 10. SAID 3/4" IRON PIPE IS NORTH 51°35'50" WEST, 16.05 FEET FROM THE COMPUTED NORTH 1/16. SAID

(1829703013) WEST 1/4 CORNER SECTION 10, T29S-R5W FOUND 2" ALUMINUM CAP "LS 2354" DATED 1993

- BT REFERENCES: 1) FOUND 24" FIR N 50° E - 24.8' TO NAIL SIDE CENTER 2) FOUND 31" FIR WITH HEALED FACE N 13° W, 46.4' TO FACE 3) FOUND 25" CEDAR WITH HEALED FACE N 79° W, 15.2' TO FACE 4) FOUND 17" CEDAR SNAG S 25° E, 25.5' TO SIDE CENTER

(1829903006) WEST 1/16 CORNER SECTIONS 3/10, T29S-R5W FOUND 3/4" IRON PIPE

- BT REFERENCES: 1) SET 13" FIR SCRIBED "BT" N 54° E, 9.45' TO NAIL SIDE CENTER 2) SET 9" FIR SCRIBED "BT" S 42° W, 14.2' TO NAIL SIDE CENTER

REFERENCE SURVEYS:

- 1) RECORD OF SURVEY BY MARK SMALLEY SURVEY M 119-2 DATED 1993 2) RECORD OF SURVEY BY GEO. J. WENDEROTH SURVEY M5-38 DATED 1957 3) RECORD OF SURVEY RM 2-47 BY H.N. HOOVER DATED APRIL, 1973 4) COUNTY SURVEY M171-73 - DATED DECEMBER 3, 2019 5) COUNTY SURVEY M 157-37 BY KRISTIAN O. DEGROOT DATED FEBRUARY 4, 2011 6) BLM DEPENDENT RESURVEY APPROVED JANUARY 9, 1992 7) COUNTY SURVEY NO. M166-42 DATED SEPTEMBER 11, 2015

RECORD OF SURVEY LOCATED IN THE NE 1/4 OF SECTION 9 AND NW 1/4 OF SECTION 10 TOWNSHIP 29 SOUTH, RANGE 5 WEST, WILLAMETTE MERIDIAN DOUGLAS COUNTY, OREGON

FILED Date: 11/17/2020 By: JN This survey consists of Map: M178-18A-F Narrative: Corner Rpt: DOUGLAS COUNTY SURVEYOR

(1829903002) CENTER 1/4 CORNER SECTIONS 9, T29S-R5W FOUND 2" ALUMINUM CAP "LS 2354" DATED 1993

- BT REFERENCES: 1) FOUND 20" DOUBLE OAK WITH VISIBLE SCRIBE, N 72° W - 49.5' 2) FOUND 32" FIR WITH VISIBLE SCRIBE, N 26° E, 62.9' 3) FOUND 43" DOUBLE CEDAR WITH HEALED FACE, S 11° E, 45.0' 4) FOUND 18" PINE WITH HEALED BLAZE S 11° W, 47.3'

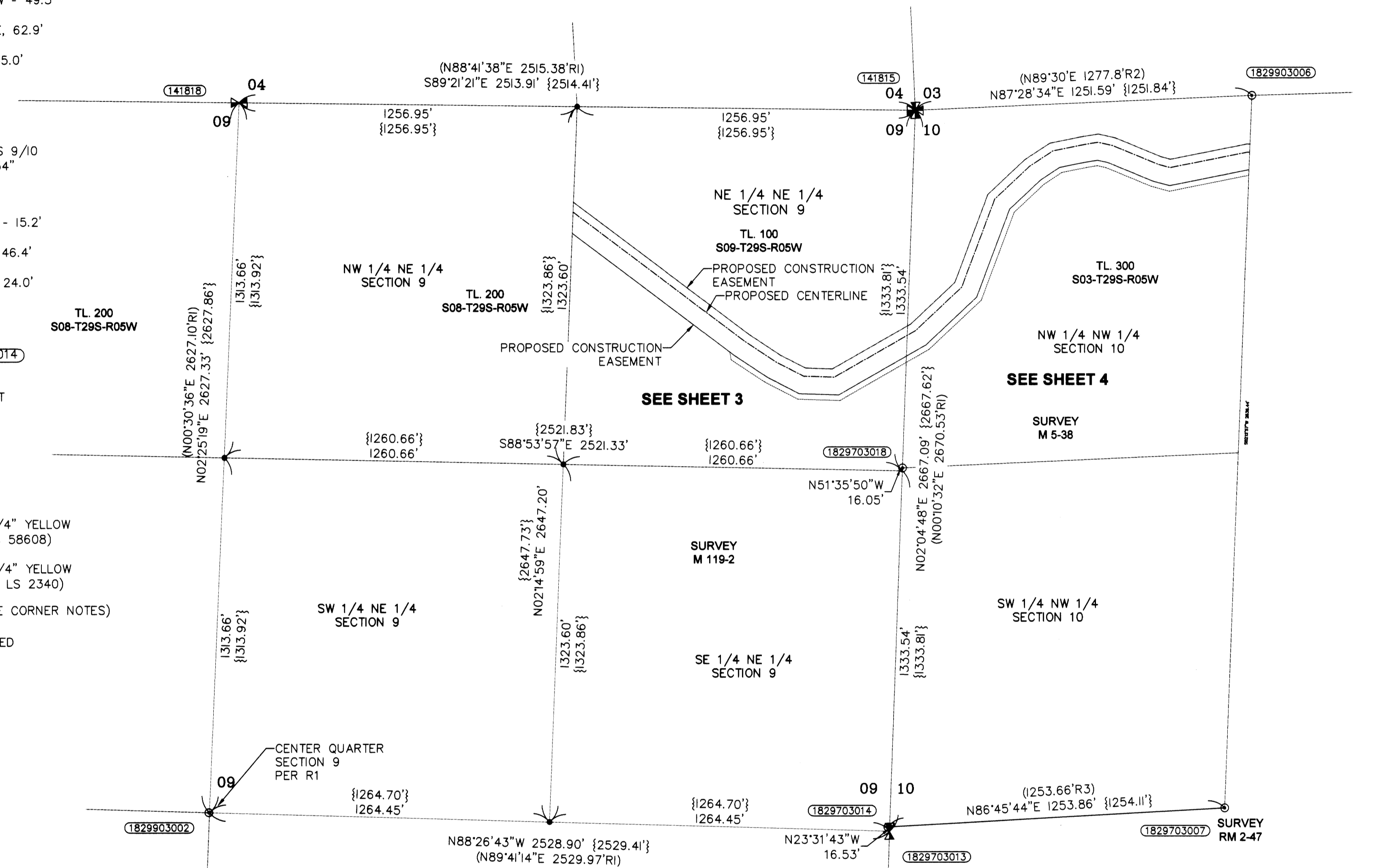
(1829703013) 1/4 CORNER COMMON TO SECTIONS 9/10 FOUND 2" ALUMINUM CAP "LS 2354" DATED 1993

- BT REFERENCES: 1) FOUND 25" CEDAR WITH HEALED FACE, N 79° W - 15.2' 2) FOUND 31" FIR WITH HEALED FACE, N 13° W, 46.4' 3) FOUND 24" DOUBLE FIR WITH HEALED FACE, N 50° E, 24.0' 4) FOUND 17" CEDAR SNAG WITH HEALED BLAZE S 25° E, 25.5' (25.3'RI)

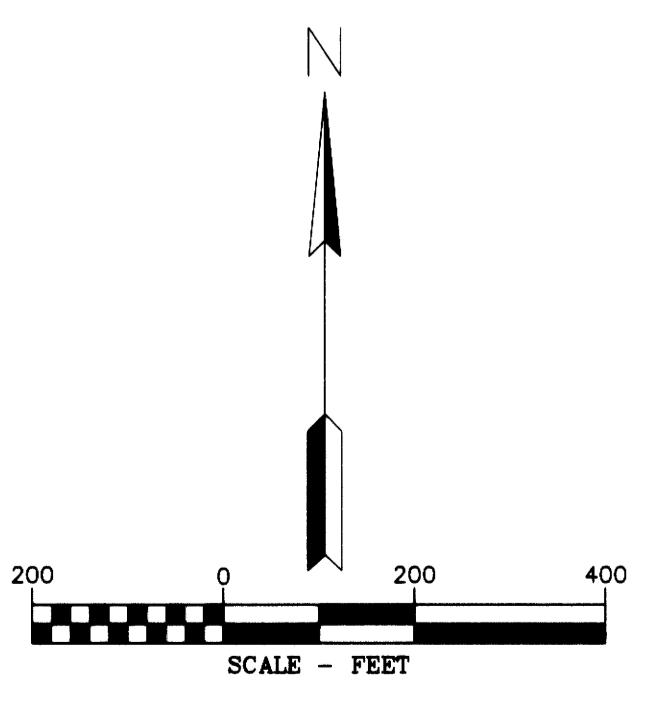
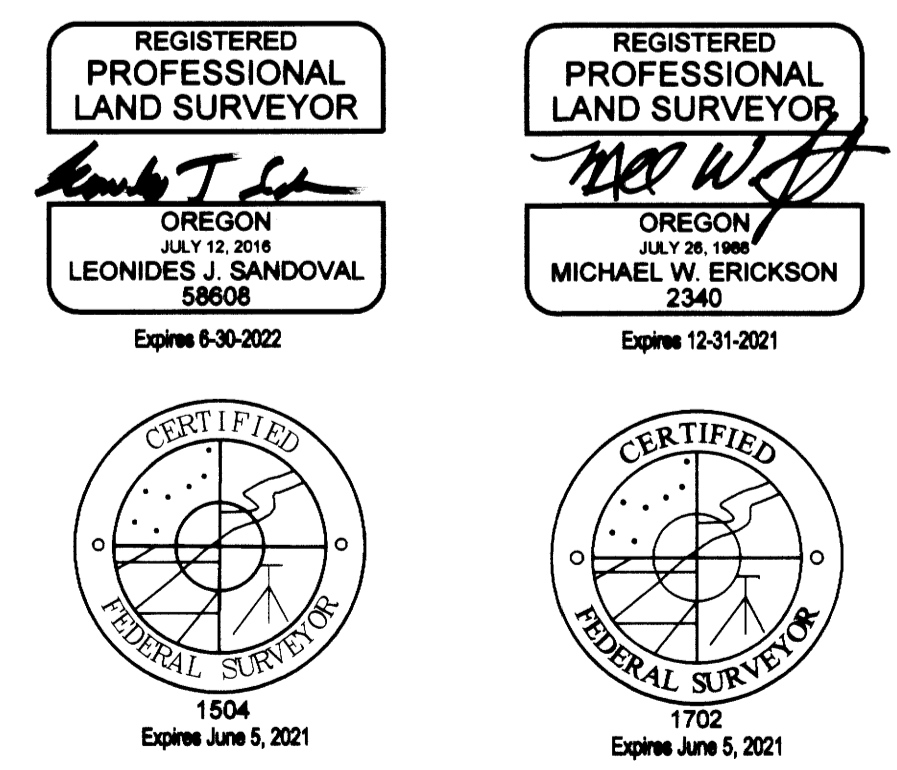
NOTE: FOUND POINT NO. (1829703014) WHICH IS A 3/4" IRON PIPE. PER SURVEY NO. M5-38 NORTH 23°31'43" WEST, 16.53 FEET NOT HELD FOR 1/4 CORNER

LEGEND

- SET 5/8" X 24" REBAR WITH 1 1/4" YELLOW PLASTIC CAP (KLEIN & ASSOC. LS 58608) ○ SET 5/8" X 24" REBAR WITH 1 1/4" YELLOW PLASTIC CAP (DYER PARTNERSHIP LS 2340) ○ FOUND MONUMENT AS NOTED (SEE CORNER NOTES) • COMPUTED POINT, NOT MONUMENTED △ CORNER NOT SEARCHED ▽ FOUND QUARTER CORNER SEE CORNER NOTES ✱ FOUND SECTION CORNER SEE CORNER NOTES ⚡ COMPUTED QUARTER CORNER ✕ COMPUTED SECTION CORNER ○ POINT NUMBER {XXX.XX'} GROUND DISTANCE (XXX.XX') RECORD DISTANCE PER REFERENCED SURVEY R1 REFERENCED SURVEY - - - PROPOSED ALIGNMENT - - - - - TEMPORARY CONSTRUCTION EASEMENT - - - - - TEMPORARY WORK AREA



AREA table with columns for feature and area. Rows: TEMPORARY CONSTRUCTION EASEMENT (6.82 ACRES), TEMPORARY WORK AREA (1.10 ACRES)



THE DYER PARTNERSHIP ENGINEERS & PLANNERS, INC. 1330 Teakwood Avenue / Coos Bay, Oregon 97420 (541) 269-0732 / WWW.DYERPART.COM

PACIFIC CONNECTOR GAS PIPELINE PROJECT RECORD OF SURVEY SECTIONS 9 AND 10 TOWNSHIP 29 SOUTH, RANGE 5 WEST, W.M. DOUGLAS COUNTY, OREGON. Includes drawing and approval tables.