

RECORD OF SURVEY

LOCATED IN THE SE 1/4 OF
SECTION 6, T.25S., R.1W., W.M.
DOUGLAS COUNTY, OREGON

FILED
Date: 2-8-2021 By: [Signature]
This Survey Consists of:
Map: M177-80
Narrative: _____
Corner Rpt.: _____
DOUGLAS COUNTY
SURVEYOR



B.T.S.

BASIS OF BEARING:
21-003 SENECA LDP

NARRATIVE:

THE PURPOSE OF THIS SURVEY IS TO MARK A PORTION OF THE BOUNDARY OF SENECA CO. PROPERTY LOCATED IN THE SOUTHEAST 1/4 OF SECTION 6, TOWNSHIP 25 SOUTH, RANGE 1 WEST, W.M., FOR TIMBER MANAGEMENT PURPOSES. THE 2020 ARCHIE CREEK FIRE BURNED WITH LOW INTENSITY THROUGH THE PROJECT AREA.

I ACCEPT THE MONUMENTS AS FOUND AND POST AND MARK THE BOUNDARY AS SHOWN WITH 5 1/2" STEEL POST PAINTED RED WITH RED FLAGGING, AND TREES WITHIN 3-5 FEET OF LINE BLAZED, WITH BLAZES PAINTED RED.

THIS SURVEY WAS PERFORMED IN THE FIELD FROM JANUARY 21, 2021 TO JANUARY 28, 2021 BY ISAAC JACOBSEN, JAKE BUZZARD, AND ALLYN ST.ONGE, WITH COMPUTATIONS AND DRAFTING BY ADAM DEGROOT AND RUSSELL BADGLEY.

CORNER DESCRIPTIONS:

ALL NEW BEARING TREES HAVE DOUBLE BLAZED FACES WITH A BRASS WASHER STAMPED "BADGLEY PLS70716" NAILED INTO THE LOWER BLAZE. BEARINGS ARE TAKEN TO THE CENTER OF THE TREE AT THE ROOT CROWN AND DISTANCES ARE MEASURED TO A NAIL IN THE ROOT CROWN AT THE SIDE AND CENTER OF THE TREE WITH A TOTAL STATION. ALL BEARING TREES HAVE A 6" RED BAND PAINTED AROUND THE TREE AND THE BLAZED FACE PAINTED RED AND BEARING TREE SIGNS NAILED TO THE TREE.

① 1/4 S6/S7 PLSS ID NO. 140600
FD. A 1-1/4" IRON POST BY TRACY WITH THE DCSO IN 1967 PER CS FILE 52/30, FIRMLY SET AND PROJECTING 12" ABOVE THE GROUND, WITH A 2 1/2" BRASS CAP MARKED:

T25S

1/4 S6
S7
R1W
1967

FROM WHICH AN ORIGINAL BEARING TREE:
A 37" CEDAR BEARS N.03°00'W., 22.4 FT WITH HEALED BLAZE (N.2°W., 33 1/2 LKS)R4
AND A BEARING TREE BY TRACY:
A 22" D. FIR BEARS N.35°45'E., 40.4 FT WITH HEALED BLAZE (N.37°E., 62 LKS)R4
AND NEW BEARING TREES:
A 13" HEMLOCK BEARS S.28°15'E., 61.6 FT SCRIBED "1/4 S7 BT" ON A DOUBLE BLAZE
A 9" HEMLOCK BEARS S.87°15'E., 49.5 FT SCRIBED "1/4 S7 BT" ON A DOUBLE BLAZE

SURVEY CONTROL PROCEDURE:

A STATIC GPS NETWORK SURVEY WAS PERFORMED UTILIZING LEICA GS15 GPS RECEIVERS, AND CONTROLLED BY AN NGS OPUS SOLUTION ON A PROJECT CONTROL POINT. THE RESULTING GEODETIC COORDINATES WERE PROJECTED INTO THE BELOW DEFINED COORDINATE SYSTEM. POSTED LINES AND CONTROLLING CORNERS WERE TIED BY CONVENTIONAL TRAVERSE WITH A LEICA TCR1203 TOTAL STATION FROM THE STATIC OR RTK GPS CONTROL POINTS, AND ADJUSTED IN LEICA INFINITY BY THE METHOD OF LEAST SQUARES.

COORDINATE SYSTEM NAME: 21-003 SENECA LDP
PROJECTION: TRANSVERSE MERCATOR
REFERENCE DATUM: NAD 83 (2011) (EPOCH 2010.00)
ELLIPSOID: GRS 1980
LATITUDE OF GRID ORIGIN: 43° 25' 00"N.
CENTRAL MERIDIAN: 122° 50' 30"W.
FALSE NORTHING: 100,000.00 IFT
FALSE EASTING: 250,000.00 IFT
CENTRAL MERIDIAN SCALE: 1.000104

NAD83 (2011) EPOCH 2010.00 GEODETIC COORDINATES:
CORNER NO. LATITUDE LONGITUDE
1 - 200600 43°25'21.11003"N 122°50'29.82006"W
2 - 140600 43°25'20.42248"N 122°51'05.29984"W

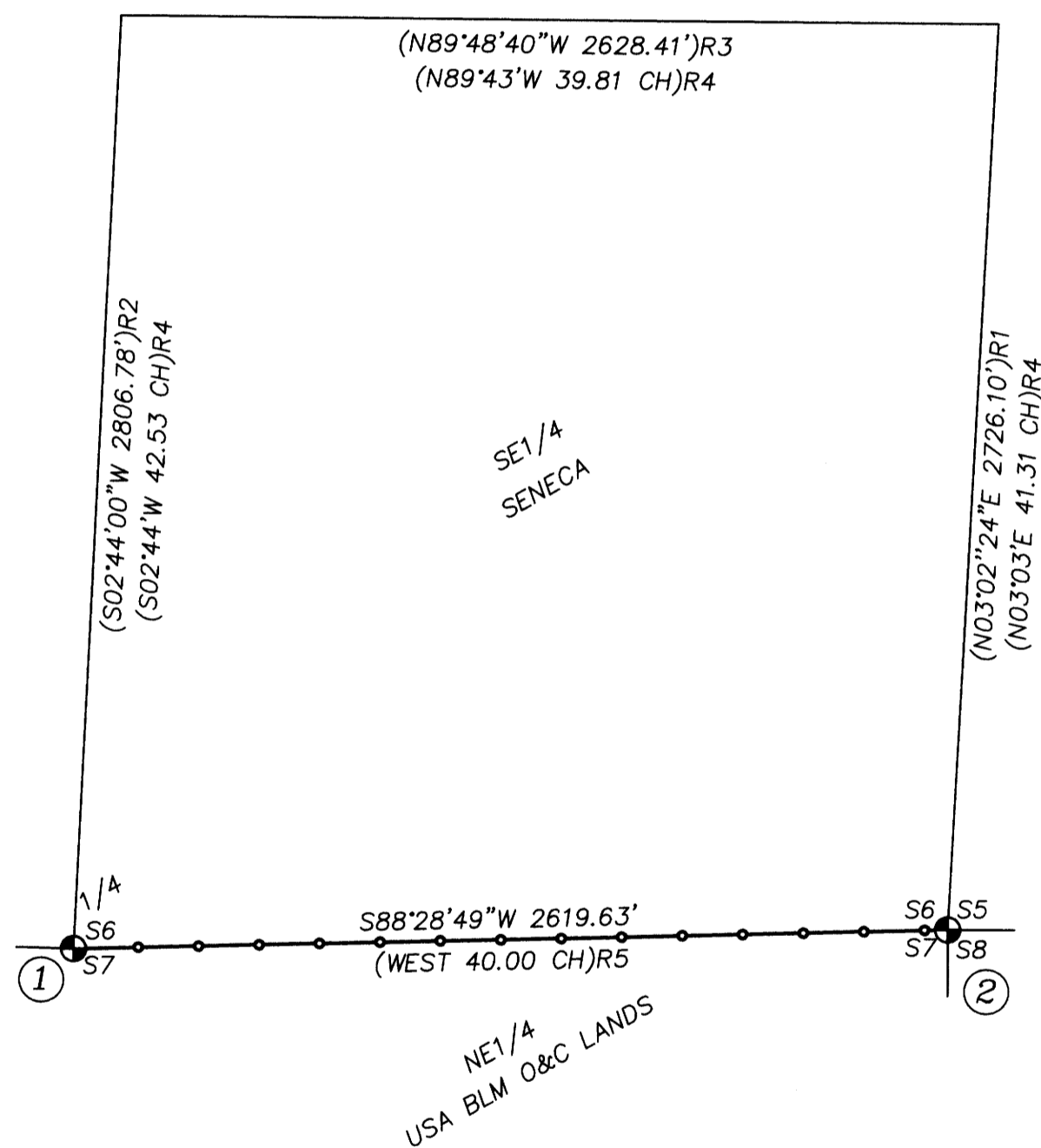
② S5/S6/S7/S8 PLSS ID NO. 200600
FD. A 1-1/4" IRON POST BY BYRON WITH THE DCSO IN 1960 PER CS FILE 52/30, FIRMLY SET AND PROJECTING 6" ABOVE A STONE MOUND, 5 FT IN DIAMETER AT BASE, WITH A 2 1/2" BRASS CAP MARKED:

T25S, R1W

S6/S5
S7/S8

1960

FROM WHICH A BEARING TREE BY BYRON IN 1960:
A 21" D. FIR BEARS S.82°45'E., 44.6 FT W/HEALED BLAZE (S.82°E., 44.6')R1
AND BEARING TREES BY SAVELAND WITH THE BLM IN 2011:
A 16" D. FIR BEARS N.26°30'E., 13.8 FT W/HEALED BLAZE (N.26 3/4°E., 14.1')R1
A 13" D. FIR BEARS S.35°15'W., 21.3 FT W/HEALED BLAZE (S.35 1/4°W., 21.5')R1
A 18" D. FIR BEARS N.31°45'W., 10.5 FT W/HEALED BLAZE (N.31 1/4°W., 10.6')R1



RECORDS:

- R1 = BLM RETRACEMENT SURVEY, GROUP NO. 2500 - 2010
PLAT NO. 7689 - 2012
- R2 = M156-53 ~ DAVID EDWARDS LAND SURVEYING - 2008
- R3 = M175-10 ~ GERALD NYGREN, BARNES & ASSOCIATES INC. - 2020
- R4 = BLM DEPENDANT RESURVEY, GROUP NO. 1061 - 1981
PLAT NO. 5974 - 1984
- R5 = ORIGINAL GLO SURVEY BY HEZEKIAH JOHNSON, CONTRACT #721 - 1900
- R6 = DCSO CORNER NOTES

LEGEND:

- = FOUND PLSS MONUMENT AS NOTED IN THE CORNER DESCRIPTIONS
- ()R# = DIMENSION PER RECORD REFERENCE NUMBER
- # = CORNER NOTE REFERENCE NUMBER
- = POSTED BOUNDARY LINE WITH 5 1/2" STEEL POSTS
- = RECORD BOUNDARY LINE NOT POSTED



BTS SURVEYING, INC.
348 SE JACKSON ST., ROSEBURG, OR 97470
(541) 673-0966 adam@btssurveying.com

SCALE: 1" = 500'

DATE: JANUARY 28, 2021

FOR: SENECA JONES TIMBER COMPANY
EASTERN SURPRISE SURVEY

JOB #: 21-003

FILE: 21-003_ROS.DWG

SHEET 1 OF 1

MAP FILE M177-80

MAP FILE M177-80