

**CORNER DESCRIPTIONS:**

ALL NEW BEARING TREES HAVE DOUBLE BLAZED FACES WITH A BRASS WASHER STAMPED "BADGLEY PLS70716" NAILED INTO THE LOWER BLAZE. BEARINGS ARE TAKEN TO THE CENTER OF THE TREE AT THE ROOT CROWN AND DISTANCES ARE MEASURED TO A NAIL IN THE ROOT CROWN AT THE SIDE AND CENTER OF THE TREE WITH A TOTAL STATION. ALL BEARING TREES HAVE A 6" RED BAND PAINTED AROUND THE TREE AND THE BLAZED FACE PAINTED ORANGE AND BEARING TREE SIGNS NAILED TO THE TREE.

# RECORD OF SURVEY

## LOCATED IN THE NE 1/4 SECTION 22 & THE NW 1/4 OF 23, T.24S., R.3W., W.M. DOUGLAS COUNTY, OREGON

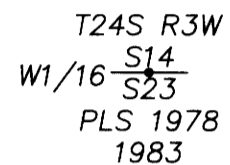
FILED  
Date: 1-5-2021 By: [Signature]  
This Survey Consists of:  
Map: M177-68  
Narrative:  
Corner Rpt.:  
DOUGLAS COUNTY SURVEYOR

1. S14/S15/S22/S23 PLSS ID NO. 500400  
A 1 5/8" IRON POST BY DAN BAKER IN 1983 PER M90-48, FIRMLY SET AND PROJECTING 10" ABOVE THE GROUND, WITH A 2 1/2" BRASS CAP MARKED:



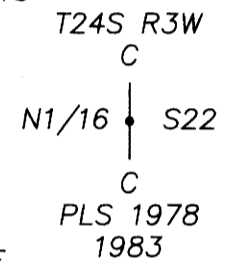
FROM WHICH BEARING TREES BY BAKER IN 1983:  
A 27" D. FIR BEARS N.4°30'E., 35.8 FT LIGHTLY BURNED (N.7°E., 35.1')  
A 27" D. FIR BEARS S.40°45'E., 24.4 FT LIGHTLY BURNED (S.39°E., 23.4')  
A 38" D. FIR BEARS N.48°30'W., 20.6 FT LIGHTLY BURNED (N.46 1/2°W., 19.9')  
AND NEW BEARING TREE:  
A 17" D. FIR BEARS S.29°30'W., 54.4 FT MARKED "T24S R3W S22 BT" ON DOUBLE BLAZE

2. W 1/16 S14/S23 PLSS ID NO. 520400  
A 1 5/8" IRON POST BY DAN BAKER IN 1983 PER M90-48, FIRMLY SET AND PROJECTING 18" ABOVE THE GROUND, WITH A 2 1/2" BRASS CAP MARKED:



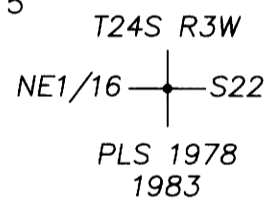
FROM WHICH BEARING TREES BY BAKER IN 1983:  
A DESTROYED BURNT FIR BEARS N.56°00'E., 29.5 FT (N.57°E., 28.6')  
AND NEW BEARING TREES:  
A 13" D. FIR BEARS S.11°30'W., 31.8 FT MARKED "W 1/16 S23 BT" ON DOUBLE BLAZE  
A 10" D. FIR BEARS N.44°00'E., 22.4 FT MARKED "W 1/16 S14 BT" ON DOUBLE BLAZE

3. CN 1/16 S22 PLSS ID NO. 440360  
A 2" IRON POST BY DAN BAKER IN 1983 PER M90-48, FIRMLY SET AND PROJECTING 18" ABOVE THE GROUND, WITH A 2 1/2" BRASS CAP MARKED:



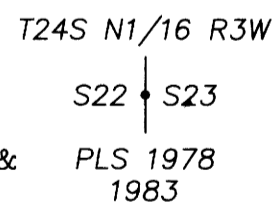
FROM WHICH BEARING TREES BY BAKER IN 1983:  
A 66" BURNED D. FIR STUMP BEARS S.84°45'E., 33.3 FT (S.83°E., 30.0')  
A 66" BURNED D. FIR STUMP BEARS N.30°30'W., 44.3 FT (N.29°W., 41.8')  
AND NEW BEARING TREES:  
A 11" D. FIR BEARS N.43°45'E., 21.2 FT MARKED "CN 1/16 S22 BT" ON DOUBLE BLAZE  
A 14" D. FIR BEARS S.16°30'E., 21.3 FT MARKED "CN 1/16 S22 BT" ON DOUBLE BLAZE

4. NE 1/16 S22 PLSS ID NO. 460360  
A 2" IRON POST BY DAN BAKER IN 1983 PER M90-48, FIRMLY SET AND PROJECTING 5" ABOVE THE GROUND, WITH A 3" BRASS CAP MARKED:



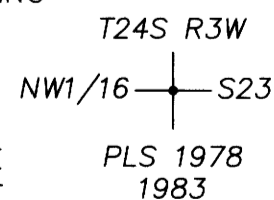
FROM WHICH BEARING TREES BY BAKER IN 1983:  
A 29" BURNED CEDAR STUMP 3 FT HIGH BEARS N.71°00'E., 26.7 FT (N.72°E., 25.4')  
A 43" BURNED CEDAR STUMP 4 FT HIGH BEARS S.17°45'E., 13.3 FT (S.18°E., 11.1')  
AND NEW BEARING TREES:  
A 15" D. FIR BEARS N.4°15'E., 46.2 FT MARKED "NE 1/16 S22 BT" ON DOUBLE BLAZE  
A 12" D. FIR BEARS N.84°15'E., 50.0 FT MARKED "NE 1/16 S22 BT" ON DOUBLE BLAZE

5. N 1/16 S22/S23 PLSS ID NO. 500360  
A 1 5/8" IRON POST BY DAN BAKER IN 1983 PER M90-48, FIRMLY SET AND PROJECTING 13" ABOVE THE GROUND, WITH A 2 1/2" BRASS CAP MARKED:



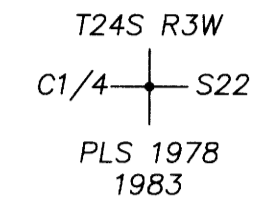
FROM WHICH BEARING TREES BY BAKER IN 1983:  
A 63" CEDAR BEARS S.88°30'E., 30.5 FT W/HEALED BLAZE BURNED (S.88°E., 29.2')  
A 25" HEMLOCK STUMP 5 FT HIGH BEARS S.46°00'W., 8.0 FT W/HEALED DOUBLE BLAZE & BURNED (S.46°W., 7.4')  
AND NEW BEARING TREE:  
A 15" HEMLOCK BEARS N.44°15'W., 30.0 FT MARKED "N1/16 S22 BT" ON DOUBLE BLAZE  
THE CORNER LIES APPROXIMATELY 35 FT NORTH OF AN OLD LOGGING ROAD.

6. NW 1/16 S23 PLSS ID NO. 520360  
A 1 5/8" IRON POST BY DAN BAKER IN 1983 PER M90-48, FIRMLY SET AND PROJECTING 6" ABOVE THE GROUND, WITH A 2 1/2" BRASS CAP MARKED:



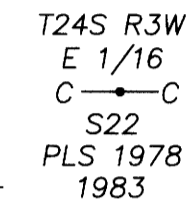
FROM WHICH NEW BEARING TREES:  
A 13" D. FIR BEARS S.81°45'E., 23.1 FT MARKED "NW 1/16 S23 BT" ON DOUBLE BLAZE  
A 19" D. FIR BEARS N.31°30'E., 59.1 FT MARKED "NW 1/16 S23 BT" ON DOUBLE BLAZE  
THE CORNER LIES APPROXIMATELY 15 FT NORTH OF AN OLD SKID ROAD.

7. C1/4 S22 PLSS ID NO. 440340  
A 1 5/8" IRON POST BY DAN BAKER IN 1983 PER M90-48, FIRMLY SET AND PROJECTING 6" ABOVE THE GROUND, WITH A 2 1/2" BRASS CAP MARKED:



FROM WHICH BEARING TREES BY BAKER IN 1983:  
A 23" CEDAR SNAG BEARS N.49°30'E., 26.9 FT W/HEALED BLAZE (N.51°E., 25.2')  
AND NEW BEARING TREES:  
A 17" D. FIR BEARS N.53°30'E., 33.7 FT MARKED "C 1/4 S22 BT" ON DOUBLE BLAZE  
A 18" MAPLE BEARS N.87°30'E., 45.6 FT MARKED "C 1/4 S22 BT" ON DOUBLE BLAZE  
AND A 1" ALUMINUM PIPE SET BY WEYERHAEUSER CO. AND REFERENCED BY BAKER IN 1983 BEARS N.67°55'43"E., 44.84 FT (N.67°52'58"E., 46.09')

8. CE 1/16 S22 PLSS ID NO. 460340  
A 2" IRON POST BY DAN BAKER IN 1983 PER M90-48, FIRMLY SET FLUSH TO THE GROUND, WITH A 2 1/2" BRASS CAP MARKED:



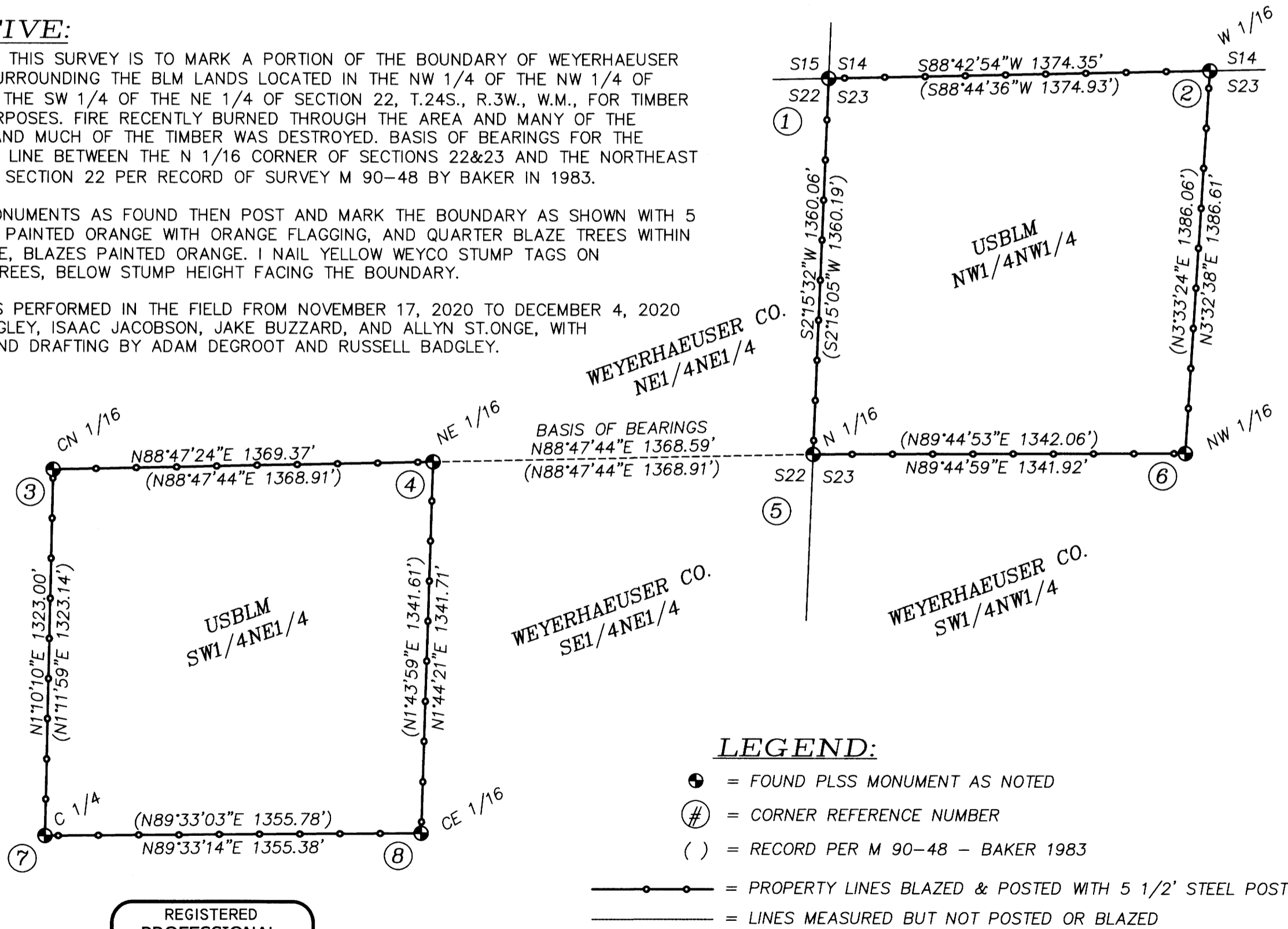
FROM WHICH NEW BEARING TREES:  
A 29" D. FIR BEARS N.33°15'W., 82.7 FT MARKED "CE 1/16 S22 BT" ON DOUBLE BLAZE  
A 12" D. FIR BEARS S.73°30'W., 103.7 FT MARKED "CE 1/16 S22 BT" ON DOUBLE BLAZE

**NARRATIVE:**

THE PURPOSE OF THIS SURVEY IS TO MARK A PORTION OF THE BOUNDARY OF WEYERHAEUSER CO. PROPERTY SURROUNDING THE BLM LANDS LOCATED IN THE NW 1/4 OF SECTION 23 AND THE SW 1/4 OF THE NE 1/4 OF SECTION 22, T.24S., R.3W., W.M., FOR TIMBER MANAGEMENT PURPOSES. FIRE RECENTLY BURNED THROUGH THE AREA AND MANY OF THE BEARING TREES AND MUCH OF THE TIMBER WAS DESTROYED. BASIS OF BEARINGS FOR THE SURVEY WAS THE LINE BETWEEN THE N 1/16 CORNER OF SECTIONS 22&23 AND THE NORTHEAST 1/16 CORNER OF SECTION 22 PER RECORD OF SURVEY M 90-48 BY BAKER IN 1983.

I ACCEPT THE MONUMENTS AS FOUND THEN POST AND MARK THE BOUNDARY AS SHOWN WITH 5 1/2' STEEL POST PAINTED ORANGE WITH ORANGE FLAGGING, AND QUARTER BLAZE TREES WITHIN 3-5 FEET OF LINE, BLAZES PAINTED ORANGE. I NAIL YELLOW WEYCO STUMP TAGS ON WEYERHAEUSER TREES, BELOW STUMP HEIGHT FACING THE BOUNDARY.

THIS SURVEY WAS PERFORMED IN THE FIELD FROM NOVEMBER 17, 2020 TO DECEMBER 4, 2020 BY RUSSELL BADGLEY, ISAAC JACOBSON, JAKE BUZZARD, AND ALLYN ST.ONGE, WITH COMPUTATIONS AND DRAFTING BY ADAM DEGROOT AND RUSSELL BADGLEY.



**LEGEND:**  
● = FOUND PLSS MONUMENT AS NOTED  
⊕ = CORNER REFERENCE NUMBER  
( ) = RECORD PER M 90-48 - BAKER 1983  
—○— = PROPERTY LINES BLAZED & POSTED WITH 5 1/2' STEEL POSTS  
— — — = LINES MEASURED BUT NOT POSTED OR BLAZED

REGISTERED PROFESSIONAL LAND SURVEYOR  
OREGON  
NOVEMBER 13, 2007  
RUSSELL BADGLEY  
70716  
RENEWS: 12-31-2021

**BTS SURVEYING, INC.**  
348 SE JACKSON ST., ROSEBURG, OR 97470  
(541) 673-0966 adam@btssurveying.com

SCALE: 1" = 400'  
DATE: 1/4/2021

FOR: WEYERHAEUSER CO. SUTHERLIN 200

JOB #: 20-087  
FILE: 20-087 PLAT.DWG  
SHEET 1 OF 1

MAP FILE M177-68

MAP FILE M177-68