

Parcel Line Table			
Line #	Direction	Length	RECORD INFO
L1	N09° 57' 35"E	333.63	
L2	N89° 57' 13"W	184.05	
L3	S59° 58' 26"W	406.45	
L4	S23° 47' 24"W	193.39	

Parcel Curve Table			
Curve #	Radius	Length	Chord Direction & Length
C1	514.00	26.91	S25° 17' 23"W 26.90'
C2	758.51	122.68	N50° 06' 44"E 122.55'

Line Table: Alignments			
Line #	Direction	Length	RECORD
L11	S43° 00' 48"E	91.88	[S41°04'35"E 91.88']
L12	N45° 28' 44"E	202.17	[N47°24'57"E 202.16]
L13	N69° 53' 44"E	391.41	[N71°49'57"E 391.40']
L14	N59° 07' 44"E	45.19	[N61°03'57"E 45.19']
L15	S73° 47' 16"E	589.63	[S71°51'03"E 589.61']

Curve Table: Alignments			
Curve #	Radius	Length	Chord Direction & Length
C9	818.51	1307.25	S88° 46' 02"E 1172.68'
C10	1145.89	488.32	N57° 41' 14"E 484.64'
C11	5729.58	1076.67	N64° 30' 44"E 1075.08'
C12	818.51	392.62	N82° 40' 14"E 388.87'

Spiral Table: Alignments				
Spiral #	Length	S	a In	a Out
S1	280.00	9° 48' 00"	2.5	0.0
S2	280.00	9° 48' 00"	0.0	2.5
S3	400.00	16° 00' 00"	2.0	0.0

Access Easement Line Table		
Line #	Direction	Length
L5	S25° 49' 12"W	97.96
L6	S04° 52' 43"E	154.91
L7	S01° 41' 14"E	309.94
L8	S09° 53' 55"W	280.00
L9	S26° 40' 28"W	191.35
L10	S40° 15' 31"W	77.75

Access Easement Curve Table			
Curve #	Radius	Length	Chord Direction & Length
C3	51.43	87.85	S20° 01' 18"E 77.55'
C4	258.23	151.65	S10° 45' 30"W 149.48'
C5	762.66	49.55	S5° 03' 36"W 49.54'
C6	351.72	72.52	S5° 41' 15"W 72.40'
C7	105.75	43.42	S14° 00' 35"W 43.12'
C8	242.63	73.02	S33° 41' 46"W 72.74'

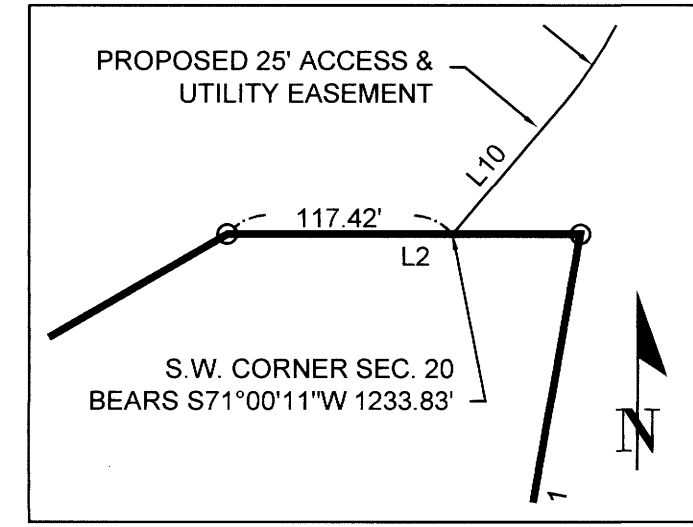
- LEGEND**
- FOUND 5/8" IRON ROD WITH 2" ALUMINUM CAP
 - FOUND 5/8" IRON ROD WITH BRASS CAP, STATE HIGHWAY STRATEGIC POINT
 - FOUND 1" IRON BAR .5' ABOVE SURFACE, S.W. CORNER, SECTION 20.
 - SET 5/8" IRON ROD WITH PLASTIC CAP MARKED "LAND MARK SURVEYING INC."
 - COMPUTED CENTERLINE GEOMETRY POINT

RECORD INFORMATION

() M146-51
 [] MAP ST HWY 38-018
 (()) DEED REF. NO. 2020-014265

BASIS OF BEARINGS PER OREGON COORDINATE REFERENCE SYSTEM - COTTAGE GROVE - CANYONVILLE ZONE (NAD 83(2011)) (EPOCH 2010) PER OREGON REAL-TIME GNSS NETWORK.

SCALE: 1" = 300'



DETAIL
SCALE: 1"=100'

Sheet 1 of 2

BOUNDARY LINE ADJUSTMENT
 In the NW 1/4, SEC. 29 & IN SEC., 20
 Township 22 South, Range 7 West, W.M.
 Douglas County, Oregon
 JUNE 25, 2020

FOR: SETH & AMBER WILLIAMSON
 P.O. BOX 625
 ELKTON, OREGON 97436

REGISTERED PROFESSIONAL LAND SURVEYOR
Mark A. Heimbürger
 OREGON
 JULY 16, 1987
 MARK A. HEIMBURGER
 2287

• 3317 N.E. Stephens St. • Roseburg, Oregon 97470
 • Office (541) 677-9400 • Fax (541) 677-9401

RENEWS JUNE 30, 2021

LM Proj. No. 2020-0039