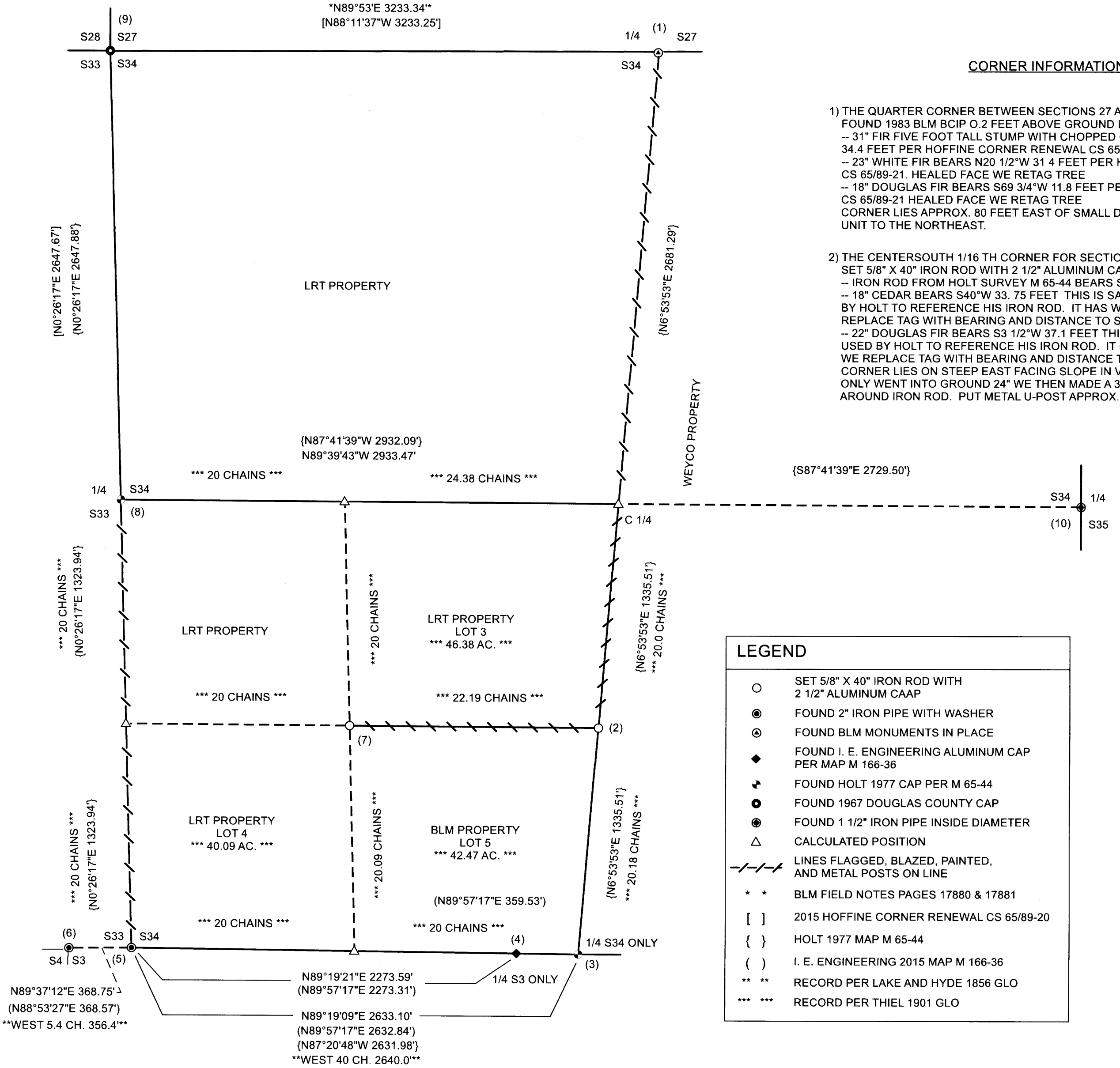


RECORD OF SURVEY:  
 SURVEY FOR: LONE ROCK TIMBERLAND LLC  
 SURVEY BY: LONE ROCK TIMBER MANAGEMENT CO.  
 P.O. BOX 1127 ROSEBURG, OR 97470  
 SECTION 34 T. 32 S. R. 5 W. W.M.  
 TRACT: NIEDERMEYER DATE: JUNE 2020

FILED  
 DATE: 8-6-2020 BY: [Signature]  
 THIS SURVEY CONSISTS OF:  
 MAP: M177-25  
 NARRATIVE:  
 CORNER RPT:  
 DOUGLAS COUNTY  
 SURVYEUR

NARRATIVE:

THE PURPOSE OF THIS SURVEY IS TO ESTABLISH AND MARK PROPERTY CORNERS AND LINES IN THE WEST HALF OF SECTION 34 FOR TIMBER MANAGEMENT PURPOSES. THIS SECTION OF TIMBERLAND IS EXTREMELY STEEP AND ROCKY WITH NUMEROUS BLUFFS AND DIFFICULT SURVEYING. THE WEST HALF OF THE SECTION WAS SURVEYED AND THE PROPERTY CORNERS AND LINES OF LONE ROCK WERE SURVEYED AND ESTABLISHED OR REESTABLISHED BY BURT HOLT IN 1977 MAP M65-44. DURING THE RESEARCH OF THE ORIGINAL GLO 1902 SURVEY PLAT WE DISCOVERED THE PROPORTIONAL LOT SUBDIVISION AND SETTING OF THE SOUTHWEST 1/16 (SOUTHWEST CORNER LOT 3) AND CENTER-SOUTH 1/16 CORNERS BY HOLT WERE NOT PROPORTIONED TO THE ORIGINAL PLAT LOT DISTANCES. WE CONSULTED WITH BLM SUPERVISOR SURVEYOR LARRY V. JUDD TO DERIVE PROPORTIONAL SUBDIVISION FOR THE PROPER SETTING THESE TWO CORNERS BASED ON THE ORIGINAL PLAT SUBDIVISION OF THE WEST 1/2 OF SECTION 34. DUE TO THE DIFFICULT TERRAIN AND THE AVAILABILITY OF OPEN SKY AREAS FROM RECENT CLEARCUT LOGGING AND ROAD CONSTRUCTION WE ESTABLISHED A NUMBER OF GPS CONTROL POINTS ALONG OUR CONVENTIONAL TRANSIT SURVEY LINES TO CONTROL OUR SURVEY NETWORK. WE UTILIZED THE OREGON LOCAL COORDINATE REFERENCE SYSTEM (OCRS), ZONE CANYONVILLE TO GRANTS PASS AS A BASIS TO CREATE LOCAL PROJECT FACTORS WITH A MAPPING ANGLE OF 0°1'54" AND COMBINED DISTANCE FACTOR OF 0.999922370 TO MORE ACCURATELY COMPARE GPS OBSERVATIONS AND TRANSIT SURVEY POINTS OVER THE LARGE ELEVATION CHANGES ON THIS PROJECT. WE HELD THE OCRS COORDINATES FOR ONE OF OUR MAIN CONTROL POINTS AT APPROXIMATELY THE MIDPOINT OF ELEVATION AND NEAR THE CENTER OF OUR PROJECT. WE ROTATED OUR TRANSIT SURVEY POINTS TO THE OCRS BEARING BETWEEN THIS GPS CONTROL POINT AND ANOTHER CONTROL POINT IN AN OPEN CLEARCUT. THE NORTH QUARTER (1), NORTHWEST (9), SOUTHWEST (5), AND THE EAST QUARTER (10) CORNERS OF SECTION 34 ARE RE-ESTABLISHED PERPETUATED ORIGINAL CORNERS. THE WEST QUARTER CORNER (8) AND SOUTH QUARTER CORNER (3) WERE PROPERLY RE-ESTABLISHED BY PROPORTION BY HOLT WHICH WE USED AS CONTROL FOR THIS SURVEY. WE ALSO TIED THE NORTHWEST CORNER OF SECTION 3, A PERPETUATED ORIGINAL CORNER, AS IT WAS CLOSE TO A GPS CONTROL POINT ON THE RIDGE AND PROVIDED A TIE TO PREVIOUS SURVEY ON THE SOUTH LINE OF SECTION 34 BY IE ENGINEERING MAP M166-36. WE INITIATED OUR SURVEY AT THE WEST 1/4 CORNER (8) OF SECTION 34 AND BEGAN A RANDOM TRANSIT TRAVERSES ALONG THE SUBDIVISION LINES WE MARKED AS SHOWN ON THIS MAP. WE USED THE TRANSIT SURVEY TO TIE THE EXTERIOR CORNERS OF THE WEST HALF OF SECTION 34 AND OUR GPS CONTROL POINTS. WE CLOSED AND BALANCED OUR TRANSIT SURVEY TRAVERSES BETWEEN THESE CONTROL POINTS. WE ALSO TIED IN THE EAST QUARTER (10) CORNER OF SECTION 34 BY GPS CONTROL POINTS WE ESTABLISHED NEAR THE CORNER WITH A TRANSIT SURVEY TIE TO THE CORNER. WE COMPUTED AND SET OUR OWN MONUMENTS FOR THE SOUTHWEST 1/16 (7) (SOUTHWEST CORNER LOT 3) AND CENTER-SOUTH 1/16 (2) CORNER OF SECTION 34. WE PLAN AT A LATER DATE TO SURVEY AND MARK THE SOUTH AND EAST LINES OF LOT 4. THE LONE ROCK PROPERTY BOUNDARY LINES, AS SHOWN ON THE PLAT, WERE MARKED WITH BLUE AND RED PROPERTY LINE RIBBON. TREES ALONG THE BOUNDARY LINE WERE BLAZED AND PAINTED WITH FLUORESCENT RED PAINT. ALUMINUM POSTS WERE PLACED ON LINE ON THE NORTH-SOUTH CENTER LINE BETWEEN THE LONE ROCK AND WEYCO PROPERTY LINES. LRT ALUMINUM PROPERTY LINE TAGS WERE INSTALLED ON ALL MARKED PROPERTY LINES ON TREES NEAR THE PROPERTY LINES. NEW ESTABLISHED BEARING TREES ARE BLAZED AND SCRIBED AT THE ROOT CROWN WITH DISTANCES MEASURED TO A NAIL AT THE SIDE CENTER OF THE TREE. THE BLAZED FACES OF THE BEARING TREES ARE PAINTED FLUORESCENT RED AND A BEARING TREE TAG IS NAILED TO THE TREE. THIS SURVEY WAS DONE WITH A GEOMAX ZIPP 20, AND TOPCON ES65 TOTAL STATIONS, AND TRIMBLE GEO 6000 CENTIMETER GRADE GNSS, WITH GARY ANGIOLET, DAN SAILY, JAKE FURGERSON, AND IGNACIO ROMAN ASSISTING ME.



CORNER INFORMATION:

- 1) THE QUARTER CORNER BETWEEN SECTIONS 27 AND 34 GCDB 440200  
 FOUND 1983 BLM BCIP 0.2 FEET ABOVE GROUND LEVEL  
 -- 31" FIR FIVE FOOT TALL STUMP WITH CHOPPED OUT FACE BEARS S84 1/4"E  
 34.4 FEET PER HOFFINE CORNER RENEWAL CS 65/89-21  
 -- 23" WHITE FIR BEARS N20 1/2"W 31.4 FEET PER HOFFINE CORNER RENEWAL  
 CS 65/89-21. HEALED FACE WE RETAG TREE  
 -- 18" DOUGLAS FIR BEARS S69 3/4"W 11.8 FEET PER HOFFINE CORNER RENEWAL  
 CS 65/89-21 HEALED FACE WE RETAG TREE  
 CORNER LIES APPROX. 80 FEET EAST OF SMALL DRAW, WITH OLD LOGGING  
 UNIT TO THE NORTHEAST.
- 2) THE CENTERSOUTH 1/16 TH CORNER FOR SECTION 34 GCDB 440120  
 SET 5/8" X 40" IRON ROD WITH 2 1/2" ALUMINUM CAP  
 -- IRON ROD FROM HOLT SURVEY M 65-44 BEARS S10°54'06"W 7.23 FEET  
 -- 18" CEDAR BEARS S40°W 33.75 FEET THIS IS SAME BEARING TREE USED  
 BY HOLT TO REFERENCE HIS IRON ROD. IT HAS WELL HEALED FACE, WE  
 REPLACE TAG WITH BEARING AND DISTANCE TO SET CORNER.  
 -- 22" DOUGLAS FIR BEARS S3 1/2"W 37.1 FEET THIS IS SAME BEARING TREE  
 USED BY HOLT TO REFERENCE HIS IRON ROD. IT HAS WELL HEALED FACE,  
 WE REPLACE TAG WITH BEARING AND DISTANCE TO SET CORNER.  
 CORNER LIES ON STEEP EAST FACING SLOPE IN VERY ROCKY SOIL, IRON ROD  
 ONLY WENT INTO GROUND 24" WE THEN MADE A 3' X 2' X 1' TALL MOUND OF STONES  
 AROUND IRON ROD. PUT METAL U-POST APPROX. 4 FEET WEST OF CORNER.
- 3) THE SOUTH 1/4 CORNER FOR SECTION 34 ONLY GCDB 440100  
 FOUND 1977 HOLT BRASS CAP PER MAP M 65-44  
 -- 20" DOUGLAS FIR BEARS N70°E 26.75 FEET ( RECORD PER MAP M 166-36 N68°E  
 28.5 FEET) HEALED FACE WE TAG TREE.  
 -- 19" CEDAR BEARS S52 1/4"E 33.8 FEET (RECORD PER MAP M 166-36 S50°E  
 34.5 FEET) HEALED FACE WE TAG TREE.  
 -- 7" CHINQUAPIN BEARS N43°E 8.5 FEET (RECORD PER MAP M 166-36 N40°E  
 8.5 FEET) VISIBLE SCRIBING AND BT TAG.  
 -- 14" DOUGLAS FIR BEARS N63 1/4"W 8.1 FEET (RECORD PER MAP M 166-36 N63°W  
 8.2 FEET) VISIBLE SCRIBING AND BT TAG.  
 CORNER IS IN MOUND OF STONES 1.0 FEET ABOVE GROUND LEVEL ON SOUTH  
 FACING SLOPE, IN MIDDLE OF SHALLOW DRAW.
- 4) THE NORTH 1/4 CORNER FOR SECTION 3 ONLY T. 33 S. R. 5 W. GCDB 440700  
 FOUND IRON ROD WITH 1" ALUMINUM CAP 0.7 FEET ABOVE GROUND LEVEL  
 -- 16" DOUGLAS FIR BEARS N3°E 3.2 FEET PER MAP M 166-36 VISIBLE SCRIBING AND BT TAG.  
 -- 15" DOUGLAS FIR BEARS N73°W 8.5 FEET PER MAP M 166-36 VISIBLE SCRIBING AND BT TAG.  
 -- 6" MADRONE BEARS S48°W 16.9 FEET PER MAP M 166-36 VISIBLE SCRIBING AND BT TAG.  
 -- 8" CEDAR BEARS S70°E 6.9 FEET PER MAP M 166-36 VISIBLE SCRIBING AND BT TAG  
 CORNER LIES ON SOUTHEAST SLOPE APPROX. 20 FEET WEST OF SMALL DRAW.
- 5) THE SECTION CORNER FOR SECTIONS 33 AND 34 ONLY GCDB 400100  
 FOUND 1 1/2" IRON PIPE WITH WASHER IN MIDDLE 1.0 FEET ABOVE GROUND LEVEL  
 -- MADRONE STUB REMAINS BEARS N21°E 15.7 FEET (RECORD PER MAP M166-36 N21°E  
 16.0 FEET)  
 -- 66" DOUGLAS FIR BEARS S16 1/2"W 20.1 FEET (RECORD PER MAP M 166-36 S18°W  
 19.1 FEET) HEALED FACE AND BT TAG.  
 -- 12" DOUGLAS FIR BEARS N71 3/4"W 5.6 FEET (RECORD PER MAP M 166-36 N74°W  
 5.9 FEET) HEALED FACE AND BT TAG.  
 -- 18" DOUGLAS FIR BEARS N44 3/4"E 19.7 FEET (RECORD PER MAP M 166-36 N52°E  
 18.6 FEET) VISIBLE SCRIBING AND BT TAG.  
 -- 18" DOUGLAS FIR BEARS S73 3/4"E 16.8 FEET (RECORD PER MAP M 166-36 S70°E  
 17.2 FEET ) VISIBLE SCRIBING AND BT TAG.  
 CORNER LIES ON STEEP EAST FACING SLOPE APPROX 350 FEET EAST OF END OF  
 ROCK ROAD 33-5-4.3.
- 6) THE CLOSING CORNER FOR SECTIONS 3 AND 4 ONLY T. 33 S. R. 5 W. GCDB 400700  
 FOUND 1 1/2" IRON PIPE WITH WASHER IN MIDDLE  
 -- 27" DOUGLAS FIR BEARS N12°W 38.2 FEET (RECORD PER MAP M166-36 N11°W  
 38.8 FEET) VISIBLE SCRIBING AND BT TAG.  
 -- 11" DOUGLAS FIR S8 1/4"W 11.9 FEET (RECORD PER MAP M 166-36 S10°W 11.7  
 FEET) VISIBLE SCRIBING AND BT TAG.  
 -- 8" CHINQUAPIN BEARS S45 3/4"W 28.2 FEET (RECORD PER MAP M 166-36 S47°W  
 29.1 FEET ) VISIBLE SCRIBING AND BT TAG  
 -- ROTTEN FIR STUB BEARS S29°W 11.7 FEET (RECORD PER MAP M 166-36 S29°W  
 11.6 FEET) CUT OUT FACE  
 -- ROTTEN FIR STUB BEARS S12 1/4"E 17.1 FEET (RECORD PER MAP M 166-36 S12°E  
 17.2 FEET) HEALED FACE  
 -- ROTTEN FIR STUB BEARS S42 1/4"W 47.3 FEET (RECORD PER C.S. FILE 41/184 S43°W  
 46.53 FEET) HEALED FACE  
 CORNER LIES ON WEST SIDE OF MAIN RIDGETOP, APPROX. 88 FEET N28°W FROM  
 MIDDLE OF LANDING AT END OF 33-5-4.3 ROAD.
- 7) THE SOUTHWEST 1/16 TH CORNER FOR SECTION 34 GCDB 420120  
 SET 5/8" X 40" IRON ROD WITH 2 1/2" ALUMINUM CAP MARKED LONE ROCK TIMBER  
 SW1/16 S34 2020 PLS 2291  
 -- 13" DOUGLAS FIR BEARS S19 1/2"W 13.9 FEET WE SCRIBE SW1/16 S34 BT AND TAG TREE  
 -- 26" DOUGLAS FIR BEARS N70°E 30.8 FEET WE SCRIBE SW 1/16 S34 BT AND TAG TREE  
 -- HOLT IRON ROD BEARS S83°07' W 82.55 FEET THIS CORNER WAS SET INCORRECTLY SO  
 WE REMOVE ALUMINUM CAP AND REPLACE IT WITH ORANGE PLASTIC CAP MARKED LONE  
 ROCK TIMBER PLS 2291 EXISTING BEARING TREES FOR HOLT IRON ROD ARE AS FOLLOWS  
 -- 17" PINE BEARS N28°W 26.1 FEET (RECORD PER MAP M 65-44 N27°W 26.5 FEET) HEALED  
 FACE AND BT TAG.  
 -- 33" DOUGLAS FIR BEARS N75 3/4"E 19.1 FEET (RECORD PER MAP M 65-44 N74°E 20.0 FEET)  
 HEALED FACE AND BT TAG.  
 CORNER IS 0.8 FEET ABOVE GROUND WITH MOUND OF STONES PILED AROUND IT,  
 ON SOUTH FACING SLOPE APPROX. 100 FEET SOUTH OF OLD RIDGETOP CAT TRAIL. PUT  
 U-POST APPROX 10 FEET EAST OF CORNER.
- 8) THE QUARTER CORNER BETWEEN SECTIONS 33 AND 34 GCDB 400140  
 FOUND 1977 HOLT ALUMINUM CAP IN LOOSE ROCKY SOIL  
 -- 30" DOUGLAS FIR BEARS S43°W 8.9 FEET (RECORD PER CS 65/89-20 S48°W 9.2 FEET  
 HEALED FACE AND BT TAG.  
 -- 16" DOUGLAS FIR BEARS S68 1/2"E 18.2 FEET WE SCRIBE T32S R5W 1/4 S 34 BT AND TAG TREE  
 -- 15" DOUGLAS FIR BEARS N37 1/2"E 11.75 FEET WE SCRIBE T32S R5W 1/4 S34 BT AND TAG TREE  
 CORNER LIES ON STEEP NORTHWESTERLY SLOPE IN LOOSE ROCKY SOIL.
- 9) THE NORTHWEST SECTION CORNER FOR SECTION 34 GCDB 400200  
 FOUND 1967 COUNTY CAP 1.5 FEET ABOVE GROUND  
 -- 40" DOUGLAS FIR STUMP BEARS S27 1/2"W 31.68 FEET PER BLM 1983 VOL. 47 PG. 17881  
 -- 32" DOUGLAS FIR BEARS S48 1/2"E 27.55 FEET (RECORD 1983 BLM S48 1/2"E 27.72 FEET)  
 HEALED FACE AND TAG  
 -- 17" CEDAR BEARS N41 3/4"E 41.91 FEET PER 1983 BLM RECORD HEALED FACE AND TAG  
 -- 14" CEDAR BEARS N27 1/4"W 47.85 FEET PER 1983 BLM RECORD HEALED FACE AND TAG  
 CORNER LIES ON STEEP EAST FACING SLOPE APPROX 100 FEET WEST OF PAVED MURPHY  
 ROAD. METAL FENCE POST APPROX. 0.5 FEET WEST OF CORNER.
- 10) THE QUARTER CORNER FOR SECTIONS 34 AND 35 GCDB 500140  
 CORNER IS A 1 1/2" INSIDE DIAMETER IRON PIPE 4" ABOVE GROUND LEVEL  
 -- 19" DOUGLAS FIR STUMP BEARS N80°W 8.65 FEET (DOUGLAS COUNTY RECORD  
 N80°W 8.2 FEET) OPEN FACE WITH VISIBLE SCRIBING.  
 -- 31" WHITE FIR STUMP BEARS S30°W 20.85 FEET ( DOUGLAS COUNTY RECORD  
 S30°W 21.0 FEET) HEALED FACE ON PEELING BARK.  
 -- 22" DOUGLAS FIR BEARS S2°E 10.0 FEET AS PER DOUGLAS COUNTY RECORD  
 HEALED FACE AND WE RETAG TREE.  
 CORNER LIES APPROX. 120 FEET WEST OF QUINES CREEK COUNTY ROAD AND APPROX  
 40 FEET EAST OF OLD DIRT LOGGING ROAD. PUT METAL U-POST APPROX. 1.0 FEET  
 NORTH OF CORNER.

**LEGEND**

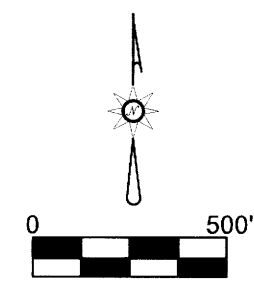
- SET 5/8" X 40" IRON ROD WITH 2 1/2" ALUMINUM CAAP
- ⊙ FOUND 2" IRON PIPE WITH WASHER
- FOUND BLM MONUMENTS IN PLACE
- ◆ FOUND I. E. ENGINEERING ALUMINUM CAP PER MAP M 166-36
- ⚡ FOUND HOLT 1977 CAP PER M 65-44
- FOUND 1967 DOUGLAS COUNTY CAP
- ⊙ FOUND 1 1/2" IRON PIPE INSIDE DIAMETER
- △ CALCULATED POSITION
- LINES FLAGGED, BLAZED, PAINTED, AND METAL POSTS ON LINE
- \* \* BLM FIELD NOTES PAGES 17880 & 17881
- [ ] 2015 HOFFINE CORNER RENEWAL CS 65/89-20
- { } HOLT 1977 MAP M 65-44
- ( ) I. E. ENGINEERING 2015 MAP M 166-36
- \*\* RECORD PER LAKE AND HYDE 1856 GLO
- \*\*\* RECORD PER THIEL 1901 GLO

REGISTERED  
 PROFESSIONAL  
 LAND SURVEYOR

*Ken W. Hoffine*

OREGON  
 JULY 16, 1987  
 KEN W. HOFFINE  
 2291

EXPIRES: 6/30/2021



ALL DISTANCES AND BEARINGS FOR LONE ROCK MEASURE ARE SHOWN IN STATE PLANE (OCRS) CANYONVILLE TO GRANTS PASS BASIS

MAP FILE M177-25

MAP FILE M177-25