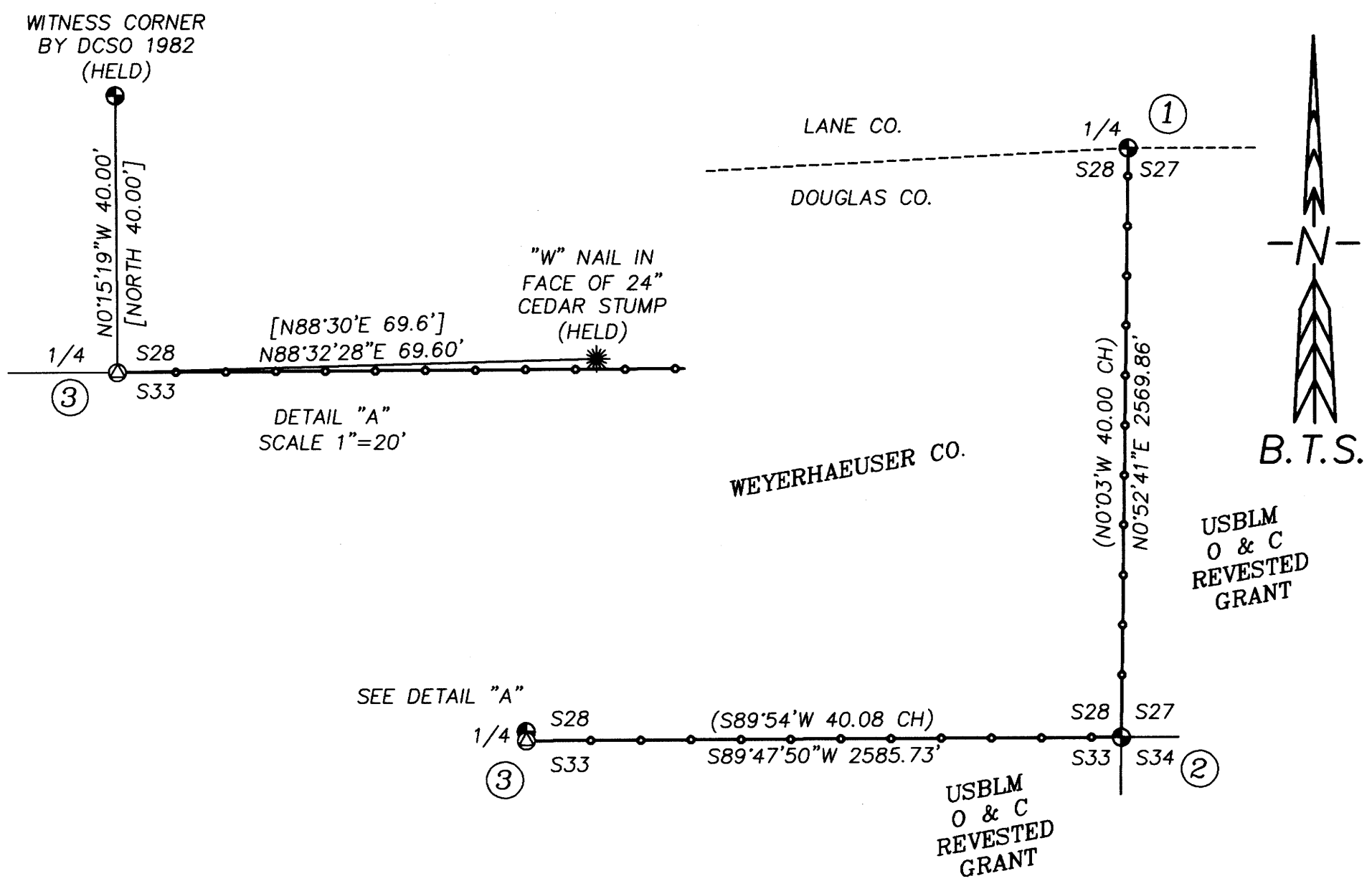


RECORD OF SURVEY

FOR
WEYERHAEUSER CO.
LOCATED IN
SE 1/4, SECTION 28, T.23S., R.2W., W.M.
DOUGLAS COUNTY, OREGON

FILED
Date: 7-16-2020 By: BT
This Survey Consists of:
Map: M177-22
Narrative: _____
Corner Rpt.: _____
DOUGLAS COUNTY
SURVEYOR

MAP FILE M177-22

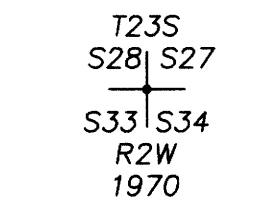


CORNER DESCRIPTIONS:

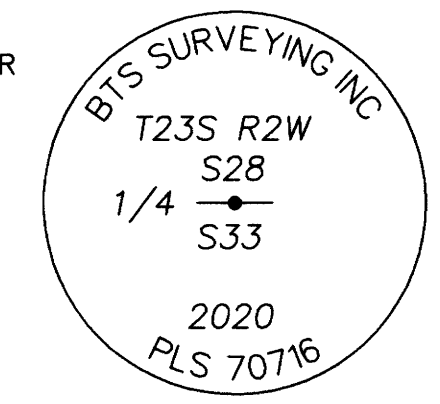
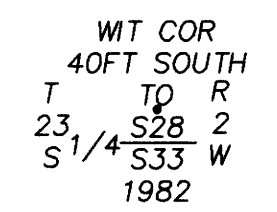
ALL NEW BEARING TREES HAVE DOUBLE BLAZED FACES WITH A BRASS WASHER STAMPED "BADGLEY PLS70716" NAILED INTO THE LOWER BLAZE. BEARINGS ARE TAKEN TO THE CENTER OF THE TREE AT THE ROOT CROWN AND DISTANCES ARE MEASURED TO A NAIL IN THE ROOT CROWN AT THE SIDE AND CENTER OF THE TREE WITH A TOTAL STATION. ALL BEARING TREES HAVE A 6" ORANGE BAND PAINTED AROUND THE TREE AND THE BLAZED FACE PAINTED ORANGE AND BEARING TREE SIGNS NAILED TO THE TREE.

- 1/4 S27/S28 PLSS ID NO. T23SR2W 400240
FD. A 2 3/4" BRASS CAP IN PVC PIPE, FIRMLY SET AND FLUSH WITH THE GROUND, WITH ACCESSORIES AS DESCRIBED BY ROBERT COOK, PLS 2336 PER THE 2016 LANE COUNTY SURVEY C.S. B43663 AND THE 2003 LANE CO. SURVEYORS OFFICE CORNER RENEWAL FILED AS C.S. FILE NO. 65/49-2 A-C.
CORNER FALLS ±720 FT NORTH OF BIG RIVER ROAD 1000.
- CORNER S27/S28/S33/S34 PLSS ID NO. T23SR2W 400200
FD. A 1 1/2" IRON POST BY DCSO IN 1970 PER CS 54/27-114, FIRMLY SET AND PROJECTING 9" ABOVE THE GROUND, WITH A 2 1/2" BRASS CAP MARKED.

FROM WHICH THE REMAINS OF AN ORIGINAL 1893 BEARING TREE:
A 38" CEDAR STUMP BEARS N.70°30'W., 16.1 FT W/VISIBLE SCRIBE BY DCSO IN 1970 [N.70°W., 15.2'] (23 LKS) AND A BEARING TREE BY DCSO IN 1970:
A 50" D.FIR CAPPED STUMP BEARS N.1°45'E., 55.7 FT W/VISIBLE SCRIBE [N.4°E., 57.4']
AND NEW BEARING TREES:
A 10" D.FIR BEARS N.51°45'E., 5.8 FT SCRIBED "T23S R2W S27 BT" ON DBL BLAZE
A 8" D.FIR BEARS S.42°45'E., 7.1 FT SCRIBED "T23S R2W S34 BT" ON DBL BLAZE
A 14" D.FIR BEARS S.74°00'W., 14.4 FT SCRIBED "T23S R2W S33 BT" ON DBL BLAZE
CORNER FALLS ±17 FEET SOUTH OF A CREEK AND ±1234 FEET SOUTH OF BIG RIVER ROAD 1000



- 1/4 S28/S33 PLSS ID NO. T23SR2W 340200
FD. A 1 1/2" IRON POST BY DCSO IN 1982 PER CS 54/27-114 AS A 40 FT WITNESS CORNER, FIRMLY SET AND PROJECTING 8" ABOVE THE GROUND, WITH A 2 1/2" BRASS CAP MARKED.
FROM WHICH BEARING TREES BY DCSO IN 1982:
A 17" CEDAR STUMP BEARS S.55°00'E., 175.6 FT [S.55°30'E., 175.9']
A 22" D.FIR SNAG BEARS RECORD [S.31°W., 292.4'] COULD NOT SEE FROM WIT. CORNER
AT THE TRUE CORNER LOCATION I SET A 5/8" x 30" IRON ROD, 2" BELOW THE ROAD SURFACE, WITH A 2" ALUMINUM CAP STAMPED:
FROM WHICH BEARING TREES BY G. McCHESNEY IN 1976-1982 PER C.S.62/1-26:
A 73" FIR STUMP BEARS RECORD [N.46 3/4°W., 102.6'] PER DCSO IN 1982. COULD NOT SEE FROM CORNER
A 65" D.FIR STUMP BEARS S.20°54'E., 44.25 FT TO MAG HUB IN CENTER [S.20°E., 40.7' TO NAIL IN FACE]
A 24" CEDAR STUMP BEARS N.88°32'28"E., 69.60 FT TO "W" NAIL IN FACE [N.88 1/2°E., 69.6'] HELD
AND NEW BEARING TREES:
A 17" D.FIR BEARS N.15°00'E., 46.1 FT SCRIBED "1/4 S28 BT" ON DBL BLAZE
A 14" D.FIR BEARS N.33°30'W., 25.5 FT SCRIBED "1/4 S28 BT" ON DBL BLAZE
CORNER FALLS IN OLD LOGGING ROAD NO LONGER IN USE.



NARRATIVE:

THE PURPOSE OF THIS SURVEY IS TO MARK THE BOUNDARY OF WEYERHAEUSER CO. PROPERTY ALONG THE EAST AND SOUTH LINES OF THE SE 1/4 OF SECTION 28, T.23S., R.2W., W.M., FOR TIMBER MANAGEMENT PURPOSES. THE EAST 1/4 CORNER AND SE SECTION CORNER OF S28 ARE FOUND AS PERPETUATED IN THEIR ORIGINAL POSITIONS. I MONUMENT THE TRUE SOUTH 1/4 CORNER OF SECTION 28 BY HOLDING THE RECORD DISTANCES FROM THE 1982 DCSO WITNESS CORNER AND THE "W" NAIL IN THE 24" CEDAR STUMP TO THE EAST SINCE THEY WERE ON LEVEL GROUND TO THE CORNER. I DID NOT USE THE 65" D.FIR STUMP TO THE SOUTH SINCE IT WAS UP A STEEP CUT BANK AND THE OTHER THREE BEARING TREES WERE TO FAR AND IMPRACTICAL TO USE FOR A GOOD MEASUREMENT. I ACCEPT THE CORNERS AS MONUMENTED, AND POST, PAINT & BLAZE TRUE LINE BETWEEN THE CORNERS. THIS SURVEY WAS PERFORMED IN THE FIELD FROM JUNE 16, 2020 TO JULY 1, 2020 BY RUSSELL BADGLEY, JAKE BUZZARD, AND ALLYN ST.ONGE WITH COMPUTATIONS AND DRAFTING BY ADAM DEGROOT AND RUSSELL BADGLEY.

SURVEY CONTROL PROCEDURE:

A STATIC GPS NETWORK SURVEY WAS PERFORMED UTILIZING LEICA 1200 GPS RECEIVERS, AND CONTROLLED BY AN NGS OPUS SOLUTION ON A PROJECT CONTROL POINT. THE RESULTING GEODETIC COORDINATES WERE PROJECTED INTO THE BELOW DEFINED COORDINATE SYSTEM. CONTROLLING CORNERS WERE TIED BY CONVENTIONAL TRAVERSE WITH A LEICA TS15 TOTAL STATION FROM THE STATIC OR RTK GPS CONTROL POINTS.

COORDINATE SYSTEM NAME: 20-049_LDP
PROJECTION: TRANSVERSE MERCATOR
REFERENCE DATUM: NAD 83 (2011) (EPOCH 2010.00)
ELLIPSOID: GRS 1980
LATITUDE OF GRID ORIGIN: 43° 32' 00"N.
CENTRAL MERIDIAN: 122° 56' 00"W.
FALSE NORTHING: 50,000.00 IFT
FALSE EASTING: 150,000.00 IFT
CENTRAL MERIDIAN SCALE: 1.000133291

NAD83 (2011) EPOCH 2010.00 GEODETIC COORDINATES:
CORNER NO. LATITUDE LONGITUDE
1 - 400240 43°32'39.70253"N 122°55'57.08920"W

LEGEND:

- ⊙ = SET 5/8" x 30" IRON ROD w/2" BTS ALUMINUM CAP STAMPED AS NOTED IN THE CORNER DESCRIPTIONS
- ⊕ = FOUND PLSS MONUMENT AS NOTED IN THE CORNER DESCRIPTIONS
- () = RECORD PER USGLO ORIGINAL SURVEY OF T.23S., R.2W. - CHANDLER - CONTRACT NO.619 - JUNE 5, 1893
- [] = RECORD PER DCSO CORNER NOTES
- # = CORNER NOTE REFERENCE NUMBER
- = POSTED BOUNDARY LINE W/ 5 1/2' POSTS

REGISTERED PROFESSIONAL LAND SURVEYOR
Russell Badgley
OREGON
NOVEMBER 15, 2007
RUSSELL BADGLEY
70716
RENEWS: 12-31-2021

BTS SURVEYING, INC.
348 SE JACKSON ST., ROSEBURG, OR 97470
(541) 673-0966 adam@btssurveying.com

SCALE: 1" = 600'
DATE: 7/15/2020

FOR: WEYERHAEUSER CO.
BIG RIVER "BR1098"

JOB #: 20-049
FILE: 20-049_BR1098.DWG
SHEET 1 OF 1

MAP FILE M177-22