

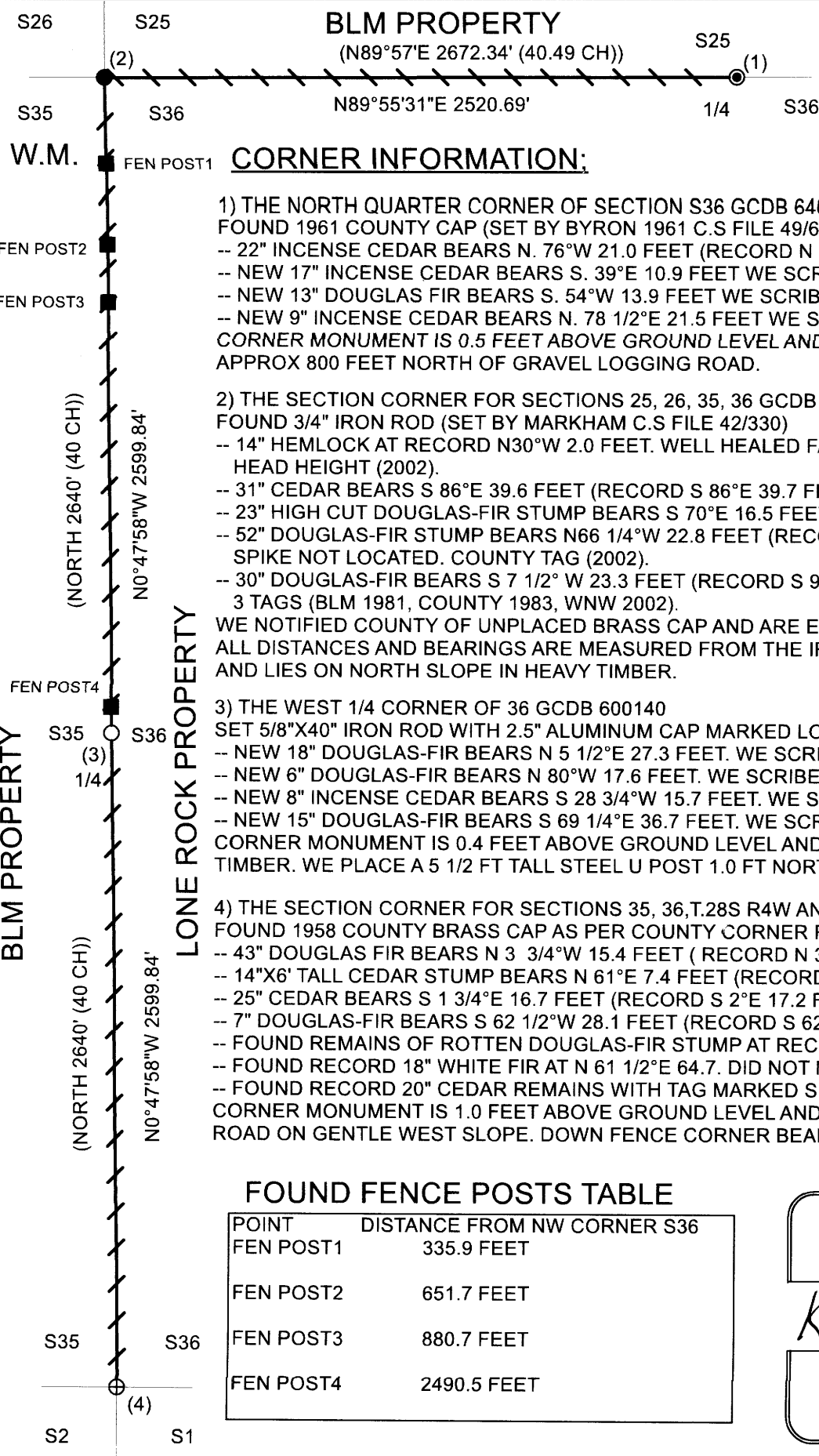
**SURVEY FOR: LONE ROCK TIMBERLAND CO.**  
**P.O BOX 1127 ROSEBURG, OR 97470**  
**SURVEY BY: LONE ROCK TIMBER MANAGEMENT COMPANY**  
**P.O. BOX 1127 ROSEBURG, OR 97457**  
**WEST 1/2 OF SECTION 36 TOWNSHIP 28 SOUTH RANGE 4 WEST W.M.**  
**DOUGLAS COUNTY, OREGON**

**DATE: JULY 2020**

**NARRATIVE:**

THE PURPOSE OF THIS SURVEY IS TO MARK PROPERTY LINES FOR TIMBER MANAGEMENT, BETWEEN EXISTING PERPETUATED ORIGINAL CORNERS AND TO SET THE WEST 1/4 CORNER (CORNER 1) OF SECTION 36 GCDB 600140. WE BEGAN A RANDOM CLOSED LOOP SURVEY AT NORTH 1/4 OF SECTION 36, TRAVERSING WESTERLY 1070 FEET +/- ALONG THE NORTH LINE OF SECTION 36 TO A GPS CONTROL POINT WE ESTABLISHED ON AN OPEN RIDGE TOP ROAD GRADE. WE THEN CONTINUED OUR RANDOM TRAVERSE WESTERLY TO THE NORTHWEST CORNER OF SECTIONS 36 (CORNER 2 GCDB 600200), THENCE SOUTHERLY TRAVERSING RANDOMLY CLOSE TO THE SECTION LINE TO THE SOUTHWEST CORNER OF SECTION 36 (CORNER 4 GCDB 600100). WE THEN CONTINUED OUR RANDOM TRAVERSE NORTHEASTERLY TO 3 RANDOM GPS CONTROL POINTS WE ESTABLISHED IN A NEARBY CLEAR-CUT NEAR THE SOUTHWEST CORNER OF THE SECTION 36. FROM THIS CLEAR-CUT WE WERE ABLE TO SEE TO THE RIDGE-TOP AND CLOSE OUR TRAVERSE TO OUR INITIAL GPS CONTROL POINT NEAR THE NORTH LINE OF SECTION 36. DURING OUR SURVEY WE FOUND 4 UNRECORDED FENCE POSTS (SEE TABLE ON THIS MAP) ON THE WEST LINE OF THE SECTION, WHICH ACCORDING TO OUR COMPUTATIONS WERE WITHIN 1 FOOT OF TRUE LINE. DURING OUR MARKING OF THE WEST LINE OF SECTION 36 WE MOVED THE POSTS TO BE ON THE SECTION LINE. WE MADE A DILIGENT SEARCH FOR ANY EVIDENCE OF THE WEST 1/4 CORNER (CORNER 3) ESTABLISHED BY THE 1881 GLO SURVEY BUT WERE UNABLE TO LOCATE ANY REMAINING EVIDENCE OF THE CORNER OR IT ACCESSORIES. THIS AREA WAS LOGGED MOST RECENTLY IN THE EARLY 1990'S, SO THAT THE STUMPS AND TREES IN THE AREA ARE EITHER OF INSUFFICIENT SIZE OR DETERIORATED TO THE EXTENT THAT NO EVIDENCE OF SCRIBING OR MARKING REMAINS. ADDITIONALLY, THE TOPOGRAPHY CALLS ON THIS LINE WERE INSUFFICIENT TO PRODUCE AN ACCURATE LOCATION FOR THIS ORIGINAL CORNER. WE SET THE WEST 1/4 CORNER OF SECTION 36 (CORNER 3) AT PROPORTIONATE MEASURE BETWEEN THE ORIGINAL FOUND PERPETUATED SECTION CORNERS (CORNERS 2 AND 4). PROPERTY BOUNDARY LINES, AS SHOWN MARKED ON THIS MAP WE MARKED ON THE GROUND WITH BLUE AND RED PROPERTY LINE RIBBON AND TREES ALONG THE BOUNDARY LINE WERE BLAZED AND PAINTED WITH FLUORESCENT RED PAINT. METAL U-POSTS WERE PLACED ONLINE AT ROAD CROSSINGS AND LRT ALUMINUM PROPERTY LINE TAGS WERE INSTALLED ON TREES ALONG PROPERTY LINES. BEARING TREES ARE BLAZED AND SCRIBED AT THE ROOT CROWN WITH DISTANCES MEASURED TO A NAIL AT THE SIDE CENTER OF THE TREE. THE BLAZED FACES OF THE BEARING TREES ARE PAINTED FLUORESCENT RED AND A BEARING TREE TAG IS NAILED TO THE TREE. THIS SURVEY WAS DONE WITH A GEOMAX ZIP 20R, AND TOPCON ES65 TOTAL STATIONS AND TRIMBLE GEO 6000 XH CENTIMETER GRADE GPS WITH JAKE FURGERSON, IGNACIO ROMAN, DANIEL SAILY, KATHERINE NICHOLS AND MICHAEL GRIFFIN ASSISTING ME.

LEGEND	
●	FOUND 3/4" IRON ROD
○	SET 5/8" IRON ROD AND ALUM CAP
⊙	FOUND 1961 COUNTY CAP
⊕	FOUND 1958 BCIP SWSC
■	FOUND 6 FOOT "T" FENCE POST MOVED TO TRUE LINE
( )	GLO 1881 LINE NOTES PG.5616, 5615 FILED IN DOUGLAS COUNTY SURVEYOR'S OFFICE
////	LINES SURVEYED BLAZED, FLAGGED, PAINTED AND TAGGED



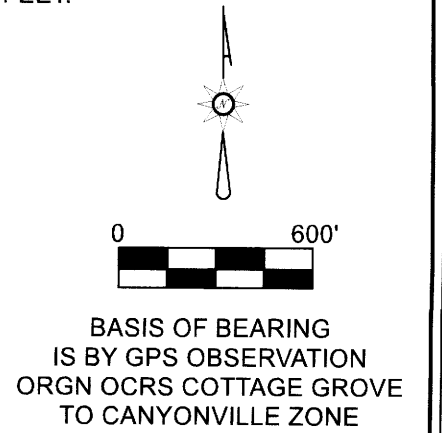
**CORNER INFORMATION:**

- 1) THE NORTH QUARTER CORNER OF SECTION S36 GCDB 640200  
 FOUND 1961 COUNTY CAP (SET BY BYRON 1961 C.S FILE 49/67)  
 -- 22" INCENSE CEDAR BEARS N. 76°W 21.0 FEET (RECORD N 75°W 21.2 FEET). WELL HEALED FACE AND TAG  
 -- NEW 17" INCENSE CEDAR BEARS S. 39°E 10.9 FEET WE SCRIBE 1/4 S36 BT AND TAG.  
 -- NEW 13" DOUGLAS FIR BEARS S. 54°W 13.9 FEET WE SCRIBE 1/4 S36 BT AND TAG  
 -- NEW 9" INCENSE CEDAR BEARS N. 78 1/2°E 21.5 FEET WE SCRIBE 1/4 S25 BT AND TAG  
 CORNER MONUMENT IS 0.5 FEET ABOVE GROUND LEVEL AND LIES ON BENCH ON NORTH FACING SLOPE APPROX 800 FEET NORTH OF GRAVEL LOGGING ROAD.
- 2) THE SECTION CORNER FOR SECTIONS 25, 26, 35, 36 GCDB 600200  
 FOUND 3/4" IRON ROD (SET BY MARKHAM C.S FILE 42/330)  
 -- 14" HEMLOCK AT RECORD N30°W 2.0 FEET. WELL HEALED FACE AND COUNTY TAG AT ROOT COLLAR AND TAG AT HEAD HEIGHT (2002).  
 -- 31" CEDAR BEARS S 86°E 39.6 FEET (RECORD S 86°E 39.7 FEET) WELL HEALED FACE AND TAG.  
 -- 23" HIGH CUT DOUGLAS-FIR STUMP BEARS S 70°E 16.5 FEET (RECORD S 69°E 16.5) PARTIAL ROTTEN FACE AND TAG (2002)  
 -- 52" DOUGLAS-FIR STUMP BEARS N66 1/4°W 22.8 FEET (RECORD N 66°W 22.9 FEET) NO VISIBLE FACE. SPIKE NOT LOCATED. COUNTY TAG (2002).  
 -- 30" DOUGLAS-FIR BEARS S 7 1/2° W 23.3 FEET (RECORD S 9°W 24.2 FEET) BARK SCRIBING VISIBLE AND 3 TAGS (BLM 1981, COUNTY 1983, WNW 2002).  
 WE NOTIFIED COUNTY OF UNPLACED BRASS CAP AND ARE EXPECTING THEM TO PLACE IT SOON.  
 ALL DISTANCES AND BEARINGS ARE MEASURED FROM THE IRON ROD. CORNER MONUMENT IS AT GROUND LEVEL AND LIES ON NORTH SLOPE IN HEAVY TIMBER.
- 3) THE WEST 1/4 CORNER OF 36 GCDB 600140  
 SET 5/8"X40" IRON ROD WITH 2.5" ALUMINUM CAP MARKED LONE ROCK TIMBER T28S R4W 1/4 S35 I S36 2020 LS2291.  
 -- NEW 18" DOUGLAS-FIR BEARS N 5 1/2°E 27.3 FEET. WE SCRIBE 1/4 S36XBT  
 -- NEW 6" DOUGLAS-FIR BEARS N 80°W 17.6 FEET. WE SCRIBE BT  
 -- NEW 8" INCENSE CEDAR BEARS S 28 3/4°W 15.7 FEET. WE SCRIBE 1/4 S35 BT  
 -- NEW 15" DOUGLAS-FIR BEARS S 69 1/4°E 36.7 FEET. WE SCRIBE 1/4 S36 BT  
 CORNER MONUMENT IS 0.4 FEET ABOVE GROUND LEVEL AND LIES ON TOP OF EAST SLOPING RIDGE, IN MIXED TIMBER. WE PLACE A 5 1/2 FT TALL STEEL U POST 1.0 FT NORTH OF CORNER.
- 4) THE SECTION CORNER FOR SECTIONS 35, 36, T.28S R4W AND SECTIONS 1, 2 T29S R5W GCDB 600100  
 FOUND 1958 COUNTY BRASS CAP AS PER COUNTY CORNER RENEWAL  
 -- 43" DOUGLAS FIR BEARS N 3 3/4°W 15.4 FEET ( RECORD N 3 1/2°W 15.2 FEET). WELL HEALED FACE AND TAG.  
 -- 14"X6' TALL CEDAR STUMP BEARS N 61°E 7.4 FEET (RECORD N 61 1/2°E 7.3 FEET) VISIBLE SCRIBING AND TAG  
 -- 25" CEDAR BEARS S 1 3/4°E 16.7 FEET (RECORD S 2°E 17.2 FEET) WELL HEALED FACE AND TAG  
 -- 7" DOUGLAS-FIR BEARS S 62 1/2°W 28.1 FEET (RECORD S 62 1/4°W 28.0 FEET) HEALED FACE AND TAG  
 -- FOUND REMAINS OF ROTTEN DOUGLAS-FIR STUMP AT RECORD S 80°W 31.7 FEET. NO TAG OR SCRIBING VISIBLE  
 -- FOUND RECORD 18" WHITE FIR AT N 61 1/2°E 64.7. DID NOT MEASURE. WELL HEALED FACE AND TAGS FRONT AND BACK  
 -- FOUND RECORD 20" CEDAR REMAINS WITH TAG MARKED S 30°E 6 LINKS (TO CORNER).  
 CORNER MONUMENT IS 1.0 FEET ABOVE GROUND LEVEL AND LIES APPROXIMATELY 210 FEET WEST OF GRAVEL ROAD ON GENTLE WEST SLOPE. DOWN FENCE CORNER BEARS WEST APPROXIMATELY 3 FEET.

FOUND FENCE POSTS TABLE	
POINT	DISTANCE FROM NW CORNER S36
FEN POST1	335.9 FEET
FEN POST2	651.7 FEET
FEN POST3	880.7 FEET
FEN POST4	2490.5 FEET

REGISTERED PROFESSIONAL LAND SURVEYOR  
*Ken W Hoffine*  
 OREGON  
 JULY 16, 1987  
 KEN W. HOFFINE  
 2291  
 EXPIRES: 6/30/2021

FILED  
 DATE: 7-15-2020 BY: *VJ*  
 THIS SURVEY CONSISTS OF:  
 MAP: M177-20  
 NARRATIVE:  
 CORNER RPT:  
 DOUGLAS COUNTY SURVEYOR



MAP FILE M177-20

MAP FILE M177-20