

RECORD OF SURVEY

LOCATED IN
 W 1/2 S2 & E 1/2 S10
 T.25S., R.1W., W.M.
 DOUGLAS COUNTY, OREGON

FILED
 Date: 7-9-2020 By: [Signature]
 This Survey Consists of:
 Map: M177-19
 Narrative:
 Corner Rpt.:
 DOUGLAS COUNTY
 SURVEYOR

CORNER DESCRIPTIONS:

ALL NEW BEARING TREES HAVE DOUBLE BLAZED FACES WITH A BRASS WASHER STAMPED "DEGROOT PLS89398" NAILED INTO THE LOWER BLAZE. BEARINGS ARE TAKEN TO THE CENTER OF THE TREE AT THE ROOT CROWN AND DISTANCES ARE MEASURED TO A NAIL IN THE ROOT CROWN AT THE SIDE AND CENTER OF THE TREE WITH A TOTAL STATION. ALL BEARING TREES HAVE A 6" RED BAND PAINTED AROUND THE TREE AND THE BLAZED FACE PAINTED RED AND BEARING TREE SIGNS NAILED TO THE TREE.

① 1/4 S2/S35 PLSS 540700
 FD. A 1 1/2" IRON POST BY DCSO IN 1963 PER CS 52/30, FIRMLY SET AND PROJECTING 12" ABOVE THE GROUND, WITH ORIGINAL STONE LOOSE AGAINST SOUTH SIDE, WITH A 2 1/2" BRASS CAP MARKED:

FROM WHICH THE ORIGINAL BEARING TREES BY NICKLIN IN 1896:
 A 60" D. FIR BEARS N.47°15'E., 22.9 FT W/HEALED BLAZE (N.50°E., 35 LKS)R1 (N.50°E., 23.1')R3
 A 36" D. FIR BEARS S.4°45'E., 7.7 FT W/HEALED BLAZE (S.5°E., 11 LKS)R1 (S.5°E., 7.3')R3
 AND BEARING TREES BY DCSO IN 1963:
 A 26" CEDAR BEARS S.77°15'E., 15.0 FT W/HEALED BLAZE (S.77°E., 15.0')R3
 A 14" CEDAR BEARS N.53°30'W., 10.3 FT W/HEALED BLAZE (N.53°W., 10.1')R3

② S34/S35/S3/S2 PLSS 500700
 FD. A 1 1/2" IRON POST BY DCSO IN 1962 PER CS 52/42, FIRMLY SET AND PROJECTING 1" ABOVE THE GROUND, WITH A 2 1/2" BRASS CAP MARKED.

FROM WHICH THE ORIGINAL BEARING TREES BY NICKLIN IN 1896:
 A 28" FIR STUMP BEARS N70°45'E., 16.2 FT (N.71°E., 27 LKS)R1 (N.71°E., 17.8' SLOPE)R3
 A 30" FIR BEARS S.66°15'E., 28.7 FT W/HEALED BLAZE (S.69°E., 44 LKS)R1 (S.64°E., 29.0' SLOPE)R3
 A 45" FIR SNAG BEARS S.8°15'W., 19.8 FT W/HEALED BLAZE (S.5°W., 31 LKS)R1 (S.5°W., 20.5')R3
 A 28" CEDAR BEARS N.7°45'W., 26.2 FT W/HEALED BLAZE (N.4°W., 41 LKS)R1 (N.4°W., 27.1')R3
 AND BEARING TREES BY DCSO IN 1962:
 A 19" HEMLOCK STUMP BEARS N.17°30'E., 34.5 FT W/NO MKS (N.21°E., 34.0')R3
 AND NEW BEARING TREES:
 A 11" D. FIR BEARS N.34°30'E., 40.3 FT SCRIBED "T24S R1W S35 BT" ON DBL BLAZE
 A 8" D. FIR BEARS S.45°30'W., 26.5 FT SCRIBED "T25S R1W S3 BT" ON DBL BLAZE

③ 1/4 S3/S2 PLSS 500640
 FD. A 1 1/2" IRON POST BY DCSO IN 1962 PER CS 52/30, FIRMLY SET AND PROJECTING 3" ABOVE THE GROUND, WITH A 2 1/2" BRASS CAP MARKED.

FROM WHICH THE REMAINS OF THE ORIGINAL BEARING TREES BY JOHNSON IN 1900:
 A ROTTED CEDAR STUMP BEARS RECORD (S.52°E., 17 LKS)R2 (S.52°E., 11.2')R3
 A ROTTED HEMLOCK STUMP BEARS RECORD (S.88°W., 20 LKS)R2
 AND BEARING TREES BY DCSO IN 1965:
 A 20" D. FIR BEARS S.18°15'W., 53.8 FT W/HEALED BLAZE (S.20°W., NO DIST.)R3
 A 15" HEMLOCK BEARS N.51°15'W., 82.6 FT W/HEALED BLAZE (N.50°W., 83.9)R3
 AND NEW BEARING TREES:
 A 11" D. FIR BEARS N.8°30'E., 6.2 FT SCRIBED "1/4 S2 BT" ON DBL BLAZE - LINE TREE
 A 10" D. FIR BEARS S.60°30'E., 15.7 FT SCRIBED "1/4 S2 BT" ON DBL BLAZE

④ S3/S2/S10/S11 PLSS 500600
 FD. A 1 1/2" IRON POST BY DCSO IN 1962 PER CS 52/30, FIRMLY SET AND PROJECTING 10" ABOVE THE GROUND, WITH ORIGINAL STONE AGAINST NORTH SIDE, WITH A 2 1/2" DCSO BRASS CAP MARKED.

FROM WHICH BEARING TREES BY DCSO IN 1962:
 A 22" D. FIR BEARS S.14°15'W., 28.6 FT W/HEALED DOUBLE BLAZE (S.15°W., 44 LKS)R3
 AND BEARING TREES BY ROGERS IN 1986/1987, BLM GROUP #1347:
 A 14" HEMLOCK BEARS N.58°00'E., 37.4 FT W/HEALED BLAZE (N.61 1/2°E., 57 LKS)R5
 A 24" D. FIR BEARS S.71°30'E., 60.7 FT W/HEALED BLAZE (S.68 1/2°E., 93 LKS)R5
 A 12" HEMLOCK BEARS N.47°45'W., 14.3 FT W/HEALED "X" AND LOW BLAZE (N.45°W., 21.5 LKS)R5

⑤ 1/4 S10/S11 PLSS 500540
 FD. A 3/4 INCH IRON ROD, REPORTED BY DCSO IN 1962 PER CS 52/30, FIRMLY SET IN A 24" DIAM. BY 12" HIGH MOUND OF STONE, AND PROJECTING 6" ABOVE THE MOUND.

FROM WHICH BEARING TREES BY DCSO IN 1962:
 A 26" HEMLOCK BEARS S.62°15'W., 20.2 FT W/HEALED DBL. BLAZE AND "X" (S.64°W., 20.1 FT)R3&R4
 AND BEARING TREES BY OTHERS:
 A 20" HEMLOCK BEARS N.53°E., 34.3 FT W/HEALED DBL. BLAZE AND "X"
 AND NEW BEARING TREES:
 A 9" HEMLOCK BEARS S.45°45'E., 39.1 FT SCRIBED "1/4 S11 BT" ON DBL BLAZE
 A 7" HEMLOCK BEARS N.2°15'W., 18.1 FT SCRIBED "1/4 S10 BT" ON DBL BLAZE

⑥ S10/S11/S15/S14 PLSS 500500
 FD. A 1 1/2" IRON POST BY DCSO IN 1966 PER CS 52/30, FIRMLY SET AND PROJECTING 8" ABOVE THE GROUND, WITH A 2 1/2" BRASS CAP MARKED.

WITH ACCESSORIES AS REPORTED PER USBLM DEPENDANT RESURVEY BY KENNETH SAVELAND, GROUP #25001006, PLAT NO. 7625, IN 2010/2011

NARRATIVE:

THE PURPOSE OF THIS SURVEY IS TO MARK THE BOUNDARY OF SENECA JONES TIMBER CO. LAND ALONG THE NORTH LINE OF THE NW 1/4 OF SECTION 2, THE WEST LINE OF SECTION 2, AND THE EAST LINE OF SECTION 10, T.25S., R1W., W.M., FOR TIMBER MANAGEMENT PURPOSES. I ACCEPT THE CORNERS AS MONUMENTED, AND POST, PAINT & BLAZE TRUE LINE BETWEEN THE CORNERS. A STATIC GPS SURVEY WAS PERFORMED WITH LEICA 1200 GPS RECEIVERS AND UTILIZING NGS CORS STATIONS THROUGH AN OPUS SOLUTION ON A PROJECT CONTROL POINT. THE GPS BASELINES OBSERVED TO PROJECT CONTROL POINTS WERE PROCESSED AND ADJUSTED WITH LEICA GEO OFFICE. THE RESULTANT GEODETIC COORDINATES WERE THEN PROJECTED ONTO THE DEFINED COORDINATE SYSTEM. A CLOSED LOOP TRAVERSE WAS RUN ALONG THE BOUNDARY WITH A LEICA TS15 TOTAL STATION, AND ADJUSTED IN LEICA GEO OFFICE BY THE METHOD OF LEAST SQUARES. THIS SURVEY WAS PERFORMED IN THE FIELD FROM JANUARY 23, 2020 TO JUNE 9, 2020 BY ADAM DEGROOT, RUSSELL BADGLEY, WYATT KEADY, JAKE BUZZARD, AND ALLYN ST.ONGE WITH COMPUTATIONS AND DRAFTING BY ADAM DEGROOT AND RUSSELL BADGLEY.

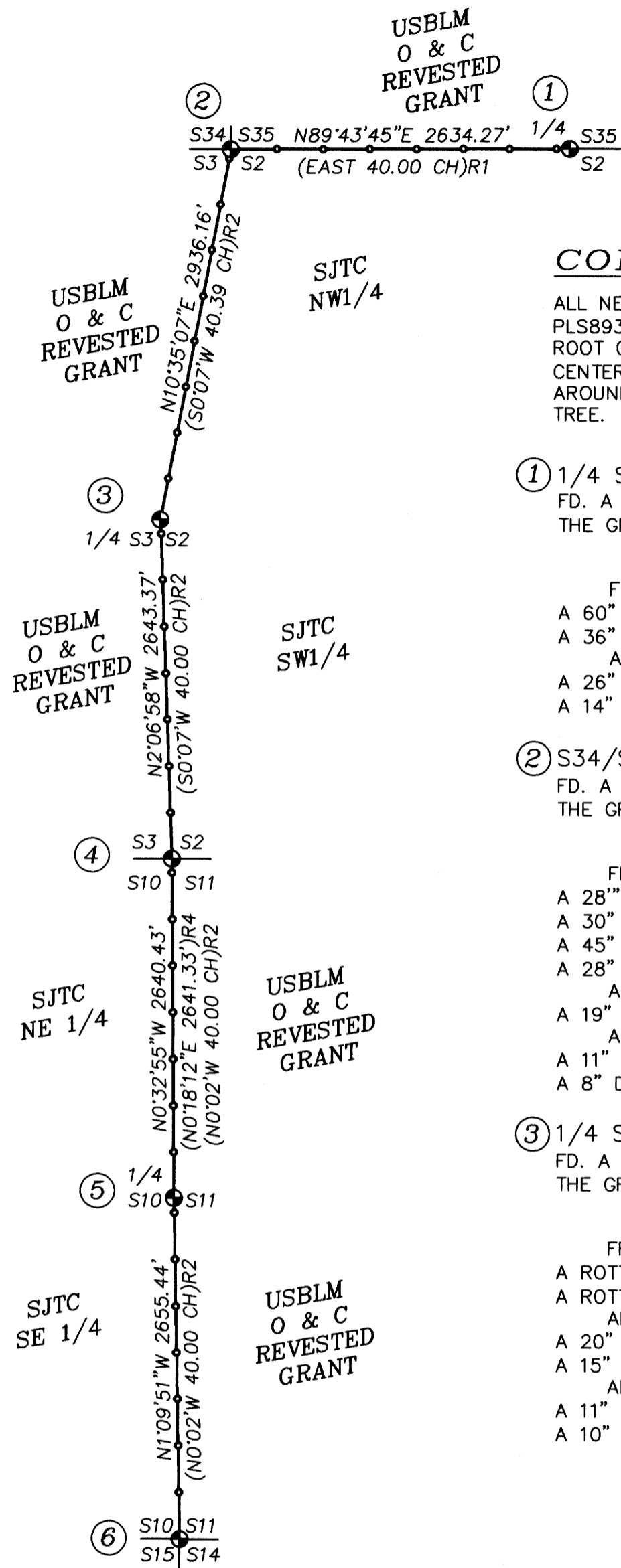
COORDINATE SYSTEM NAME: 19-067 LDP
 PROJECTION: TRANSVERSE MERCATOR
 REFERENCE DATUM: NAD 83 (2011) (EPOCH 2010.00)
 ELLIPSOID: GRS 1980
 LATITUDE OF GRID ORIGIN: 43°25'48.28472"N
 CENTRAL MERIDIAN: 122°46'57.70895"W
 FALSE NORTHING: 50000.20447 FTI
 FALSE EASTING: 150000.13661 FTI
 CENTRAL MERIDIAN SCALE: 1.000093

PLSS	LATITUDE	LONGITUDE
540700	43°26'14.65795"N	122°46'14.91493"W
500700	43°26'14.53709"N	122°46'50.61439"W
500640	43°25'46.03461"N	122°46'57.92398"W
500600	43°25'19.94783"N	122°46'56.60155"W
500540	43°24'53.87344"N	122°46'56.25921"W
500500	43°24'27.65498"N	122°46'55.52860"W

REGISTERED
 PROFESSIONAL
 LAND SURVEYOR
 [Signature]
 OREGON
 MAY 26, 2015
 ADAM DEGROOT
 89398

RENEWS: 12-31-2021

B.T.S.
 BASIS OF BEARING: 19-067 LDP



LEGEND:

- = PROPERTY LINES BLAZED, PAINTED & POSTED WITH 5 1/2' STEEL POSTS.
- = FOUND PLSS MONUMENT AS NOTED
- ()R1 = RECORD PER GLO ORIGINAL SURVEY OF TOWNSHIP LINE, CONTRACT NO. 664, PLAT NO. 95, CARL S. NICKLIN - 1896
- ()R2 = RECORD PER GLO ORIGINAL SURVEY OF T.25S., R.1W., CONTRACT NO. 721, PLAT NO. 96, HEZEKIAH H. JOHNSON - 1900
- ()R3 = RECORD PER DOUGLAS COUNTY SURVEYORS OFFICE CORNER DESCRIPTIONS C.S. FILE NO'S 52/30 & 52/42
- ()R4 = RECORD PER SURVEY M32-63 BY THOMAS E. SHRUM - 1966
- ()R5 = RECORD PER USBLM DEPENDANT RESURVEY BY WAYNE ROGERS, GROUP #1347, PLAT NO. 6302 - 1986/1987
- ()R6 = RECORD PER USBLM DEPENDANT RESURVEY BY WAYNE ROGERS, GROUP #1440, PLAT NO. - 1988
- # = CORNER NOTE REFERENCE NUMBER
- SJTC = SENECA JONES TIMBER CO.

BTS SURVEYING, INC.
 348 SE JACKSON ST., ROSEBURG, OR 97470
 (541) 673-0966 adam@btssurveying.com

SCALE: 1" = 1,000'	FOR: SENECA JONES TIMBER COMPANY 556 NE RIFLE RANGE ST. ROSEBURG, OR 97470	JOB #: 19-067 FILE: 19-067_SJTC_CANTON2.DWG SHEET 1 OF 1
DATE: JULY 9, 2020		

MAP FILE M177-19

MAP FILE M177-19