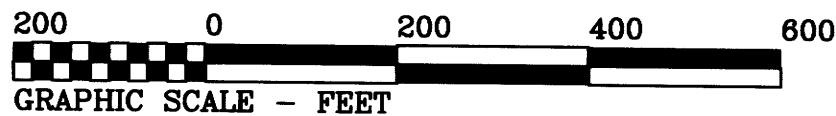


RECORD OF SURVEY  
FOR  
**ROSEBURG FOREST PRODUCTS**  
IN THE  
NW 1/4 OF SECTION 22 AND  
SE 1/4 OF SECTION 16  
T 20 S, R 9 W, W.M.  
DOUGLAS COUNTY, OREGON

JUNE 15, 2020



**LEGEND**

● .....Found Monument as noted.

Data of, or computed from, the following:

( ) ... Map File M-90-31  
< > ... Map File M-93-63

———— Line marked with Galvanized steel "U" posts 72" long at approximate 200' intervals, red ribbon, and red painted "face" blazes.

NOTE: All monuments found or set are within 1" of the ground surface unless otherwise stated.

**NARRATIVE**

The purpose of this survey was to find the monuments shown, post and blaze the line, and record our findings here. Map File M-90-31 had set 1/2" rebar risers along the line west of the Section corner. I tied the corner and 2 of these risers as shown and ran the line Easterly to the 1/4 corner. My basis of bearings is Map File M-93-63.

REGISTERED  
**PROFESSIONAL  
LAND SURVEYOR**

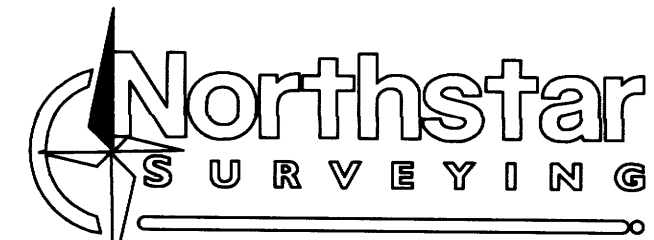
*Robert Alan Cook*  
**OREGON**  
JULY 26, 1988  
**ROBERT ALAN COOK**  
2336

RENEWS: 12/31/2021

FILED

DATE: 7-1-2020 By: D  
This survey consists of:  
Map: M177-17  
Narrative: \_\_\_\_\_  
Corner Rpt: \_\_\_\_\_

DOUGLAS COUNTY  
SURVEYOR



720 NW 4TH ST. CORVALLIS, OR 97330  
EMAIL: [bcook@northstarsurveying.com](mailto:bcook@northstarsurveying.com)  
(541) 757-9050 PROJECT No. 19304  
NW WINDY

**LINE MARKERS**  
1/2" rods per Map File M-90-31, up 36" and bent, we tie spin hole at surface.

**CORNER OF SECTIONS 15, 16, 21 & 22**

Found 2-1/2" 1953 GLO brass cap up 3" on NE bank of gravel Road. This monument has a 1/2" rebar riser and can be seen easily from the truck.

BT's per BLM Forkner survey 2006-2009:

27" D. Fir N 11°E 20.7 ft. with healed face, tag and paint.  
22" D. Fir S 04°30'W 54.1 ft. with healed face tag and paint.  
30" D. Fir N 81°W 75.8 ft. with healed face tag and paint.

**1/4 CORNER SECTIONS 15 AND 22**

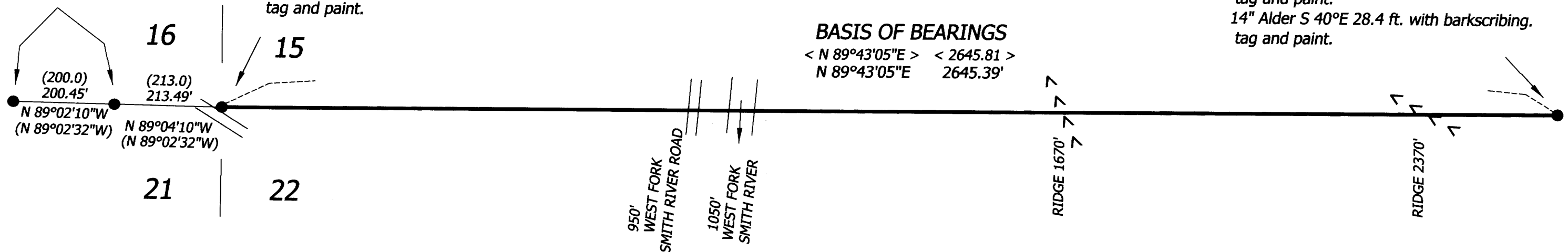
Found 1953 GLO brass cap up 1" with steel post riser. Monument lies about 25 ft. West of a drainage.

1953 GLO BT's found:

55" D. Fir snag N 54°W 33.0 ft. with tag.  
43" Cedar N 30°W 52.8 ft. with healed face, tag and paint.  
BT's per CS File 65/78-29  
44" Cedar N 89°W 11.4 ft. with scribing visible, tag and paint.  
14" Alder S 40°E 28.4 ft. with barkscribing, tag and paint.

**BASIS OF BEARINGS**

< N 89°43'05"E > < 2645.81 >  
N 89°43'05"E 2645.39'



MAP FILE M177-17

MAP FILE M177-17