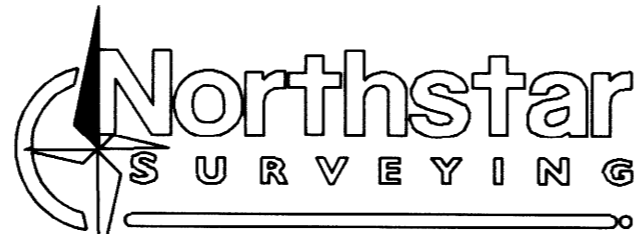



RECORD OF SURVEY
FOR
OXBOW TIMBER 1 L.L.C.
IN THE
NORTHEAST 1/4 OF SECTION 21
AND SOUTHEAST 1/4 OF SECTION 16
T 19 S, R 8 W. W.M.
DOUGLAS COUNTY, OREGON

APRIL 16, 2020



720 NW 4TH ST. CORVALLIS, OR 97330
EMAIL: bcook@northstarsurveying.com
(541) 757-9050 PROJECT No. 19319
INKLINE

REGISTERED
PROFESSIONAL
LAND SURVEYOR



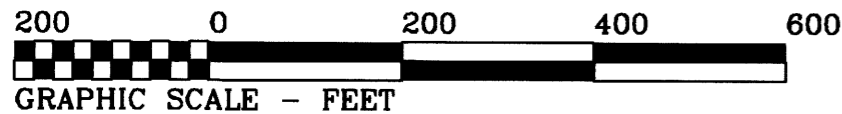
OREGON
JULY 26, 1988
ROBERT ALAN COOK
2336

RENEWS: 12/31/2021

FILED

DATE: 5-11-2020 By: *DR*
This survey consists of:
Map: M177-1
Narrative: _____
Corner Rpt: _____

DOUGLAS COUNTY
SURVEYOR



LEGEND

●Found Monument; See Corner Data.

⊕Feature located as described

Data of, or computed from, the following:

() ... Map M 174-18

[] ... GLO Plat approved May 29, 1953

————— Line marked with red ribbon, red painted blazes and
72" steel "U" posts at approximate 200 ft. intervals.

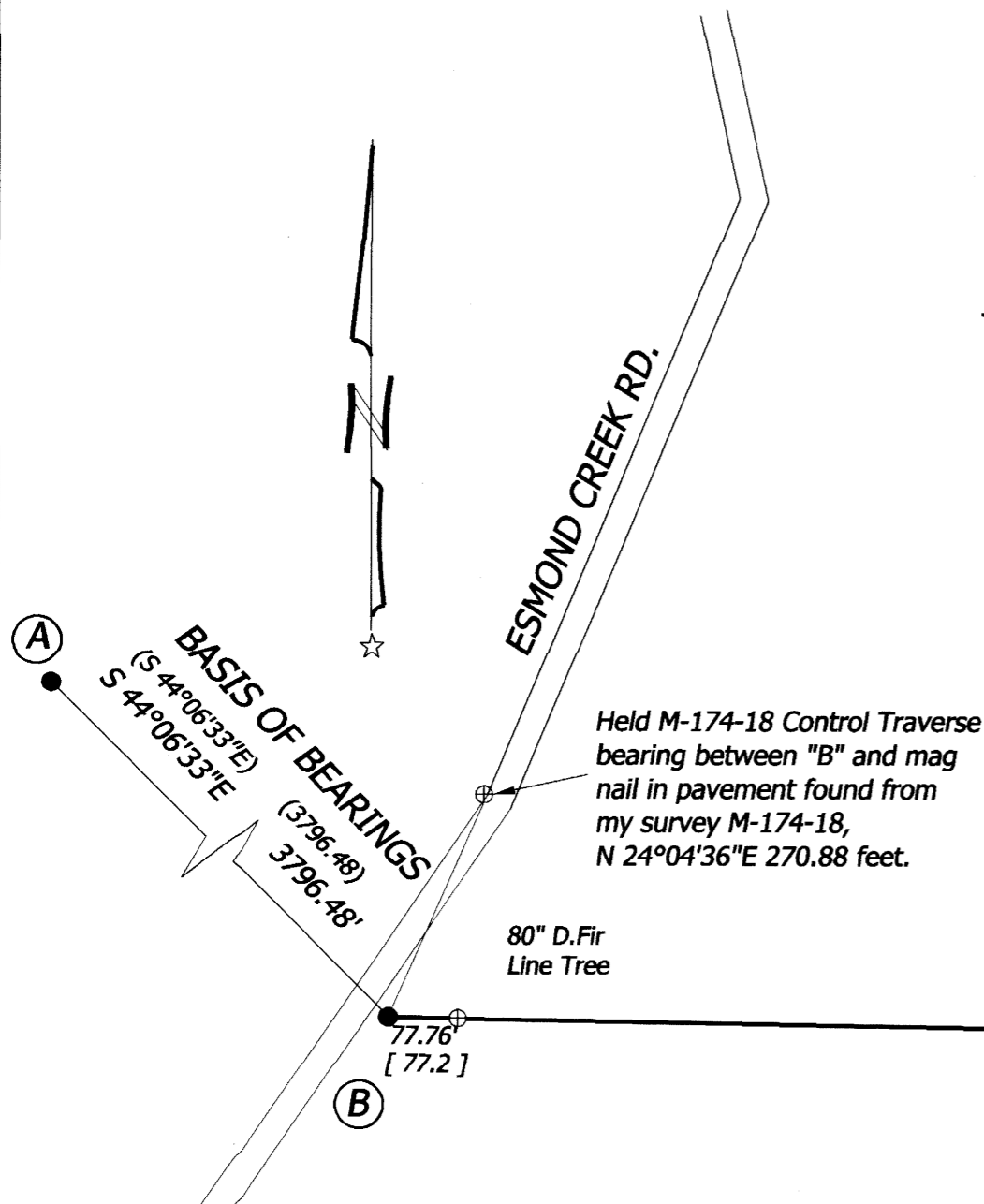
NOTE: All monuments found or set are within 1" of the
ground surface unless otherwise stated.

NARRATIVE

The purpose of this survey was to record the marking
and measuring of this line and updated corner accessories. I
was able to recover my Control traverse from my 2018
survey, M 174-18, and I oriented to it.

CORNER DATA

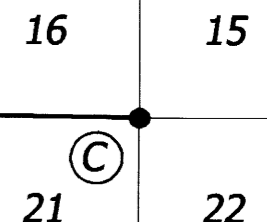
- (A) **1/4 CORNER SECTIONS 16 AND 17**
Found 1952 GLO brass cap up 20" on north slope with steel post
south 1.5'.
Monument lies on the west side of a clear cut.
20" D.Fir N 37°E 20.5 ft. with healed face, tag and paint.
32" D.Fir N 73°30'W 14.5 ft. with healed face, tag and paint.
66" D.Fir stump N 86°30'E 62.0'.
- (B) **1/4 CORNER SECTIONS 16 AND 21**
Found 1952 GLO brass cap up 3" with steel post west 2'. Monument
lies about 50 feet East of road. A Mag nail on the East edge of the
paved Esmond Creek Road lies N 24°04'36"E 270.88 feet.
11" D.Fir N 17°W 3.7' with healed face, tag and paint.
56" D.Fir N 81°E 14.5' with healed face, tag and paint.
50" D.Fir S 19°30'W 38.3' with healed face, tag and paint.
55" D.Fir S 42°30'W 48.8' with healed face, tag and paint.
80" D.Fir line tree S 89°03'46"E 77.76 feet (77.2).
- (C) **CORNER OF SECTIONS 15, 16, 21, AND 22**
Found 2-1/2" brass cap on 1-1/2" pipe, 1952 GLO up 7" on a West
slope. All BT's are found.
48" D.Fir N 50°W (N 47°W) 96.6 ft. (138 lks. = 91.08 ft.) healed
face and tag.
34" Hemlock stump S 81°W 29.2 ft. (S 78°W 46 lks.) with healed
face, tag and paint.
48" D.Fir S 7°E 22.9 ft. (S 7°15'E 33 lks.) with healed face, tag and
paint.
BT's tagged in 2016 per Pending USBLM Dependent Resurvey:
10" D.Fir S 48°W 40.75 ft. with healed face, tag and paint.
10" Hemlock N 47°E 29.2 ft. with healed face tag and paint.



[S 89°05' E] [38.77 ch. = 2558.82']
S 89°03'46"E 2573.30'

Steel "T" post
on Ridge top.

878.85'



MAP FILE M177-1

MAP FILE M177-1