

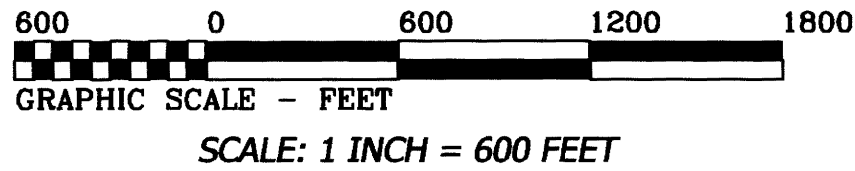
RECORD OF SURVEY FOR OXBOW TIMBER 1 L.L.C. IN THE NE, NW & SW 1/4'S OF SECTION 29, THE SOUTH HALF OF SECTION 20, AND THE EAST HALF OF SECTION 30 T 19 S, R 8 W. W.M. DOUGLAS COUNTY, OREGON

REGISTERED PROFESSIONAL LAND SURVEYOR ROBERT ALAN COOK

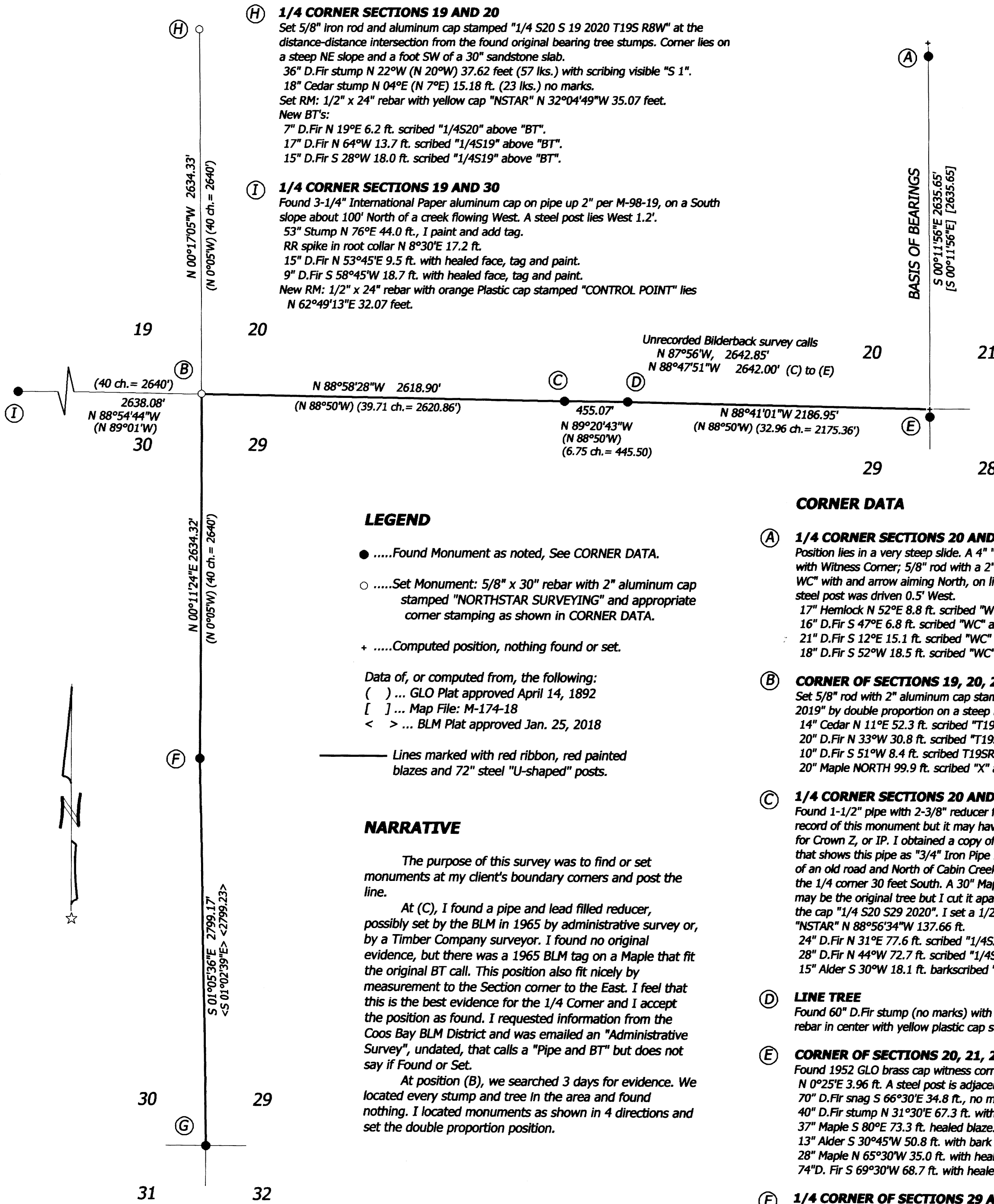
FILED DATE: 4-17-2020 By: DL This survey consists of: Map: M176-67 Narrative: Corner Rpt:

DOUGLAS COUNTY SURVEYOR

APRIL 5, 2020



Northstar SURVEYING 720 NW 4TH ST. CORVALLIS, OR 97330 EMAIL: bcook@northstarsurveying.com (541) 757-9050 PROJECT No. 19012



LEGEND

- Found Monument as noted, See CORNER DATA. Set Monument: 5/8" x 30" rebar with 2" aluminum cap stamped "NORTHSTAR SURVEYING" and appropriate corner stamping as shown in CORNER DATA. Computed position, nothing found or set. Data of, or computed from, the following: ( ) ... GLO Plat approved April 14, 1892 [ ] ... Map File: M-174-18 < > ... BLM Plat approved Jan. 25, 2018 Lines marked with red ribbon, red painted blazes and 72" steel "U-shaped" posts.

NARRATIVE

The purpose of this survey was to find or set monuments at my client's boundary corners and post the line. At (C), I found a pipe and lead filled reducer, possibly set by the BLM in 1965 by administrative survey or, by a Timber Company surveyor. I found no original evidence, but there was a 1965 BLM tag on a Maple that fit the original BT call. This position also fit nicely by measurement to the Section corner to the East. I feel that this is the best evidence for the 1/4 Corner and I accept the position as found. I requested information from the Coos Bay BLM District and was emailed an "Administrative Survey", undated, that calls a "Pipe and BT" but does not say if Found or Set. At position (B), we searched 3 days for evidence. We located every stump and tree in the area and found nothing. I located monuments as shown in 4 directions and set the double proportion position.

CORNER DATA

- 1/4 CORNER SECTIONS 20 AND 21 Position lies in a very steep slide. A 4" "MagSpike" in a root at the corner position with Witness Corner; 5/8" rod with a 2" aluminum cap stamped "1/4 S20 S21 2018 WC" with an arrow aiming North, on line S 00°11'56"E 95.00 feet on the ridge. A steel post was driven 0.5' West. 17" Hemlock N 52°E 8.8 ft. scribed "WC" above "BT". 16" D.Fir S 47°E 6.8 ft. scribed "WC" above "BT". 21" D.Fir S 12°E 15.1 ft. scribed "WC" above "BT". 18" D.Fir S 52°W 18.5 ft. scribed "WC" above "BT". CORNER OF SECTIONS 19, 20, 29 AND 30 Set 5/8" rod with 2" aluminum cap stamped "T19S R8W S19 S20 S28 S29 LS 2336 2019" by double proportion on a steep Northeast slope about 100' West of a ravine. 14" Cedar N 11°E 52.3 ft. scribed "T19SR8WS20" above "BT". 20" D.Fir N 33°W 30.8 ft. scribed "T19SR8WS19" above "BT" (scribes face West) 10" D.Fir S 51°W 8.4 ft. scribed "T19SR8WS30" above "BT". 20" Maple NORTH 99.9 ft. scribed "X" above "BT". 1/4 CORNER SECTIONS 20 AND 29 Found 1-1/2" pipe with 2-3/8" reducer filled with lead and not stamped. There was no record of this monument but it may have been set by Warren Hootman in the 50's for Crown Z, or IP. I obtained a copy of an unrecorded Bilderback survey, undated, that shows this pipe as "3/4" Iron Pipe Painted red and BT". Position lies 30 ft. South of an old road and North of Cabin Creek. A 1965 BLM tag on an Alder tree calls to the 1/4 corner 30 feet South. A 30" Maple windfall S 14°E 8 ft, with 1965 BLM tag; may be the original tree but I cut it apart and found nothing. I stamped the top of the cap "1/4 S20 S29 2020". I set a 1/2" x 24" rebar with yellow cap stamped "NSTAR" N 88°56'34"W 137.66 ft. 24" D.Fir N 31°E 77.6 ft. scribed "1/4S20" above "BT". 28" D.Fir N 44°W 72.7 ft. scribed "1/4S20" above "BT". 15" Alder S 30°W 18.1 ft. barkscribed "1/4S29BT". LINE TREE Found 60" D.Fir stump (no marks) with 1965 BLM tag on north face. I set 1/2" x 24" rebar in center with yellow plastic cap stamped "N.STAR". CORNER OF SECTIONS 20, 21, 28 AND 29 Found 1952 GLO brass cap witness corner to uprooted corner tree. Corner lies N 0°25'E 3.96 ft. A steel post is adjacent to the corner. 70" D.Fir snag S 66°30'E 34.8 ft., no marks. 40" D.Fir stump N 31°30'E 67.3 ft. with scribing visible. 37" Maple S 80°E 73.3 ft. healed blaze. 13" Alder S 30°45'W 50.8 ft. with bark scribes. 28" Maple N 65°30'W 35.0 ft. with healed blaze. 74"D. Fir S 69°30'W 68.7 ft. with healed face. 1/4 CORNER OF SECTIONS 29 AND 30 Found 1980 BLM brass cap on North slope. I set a mag nail in asphalt road S 16°06'53"E 328.72 ft. We measured and tied 60" D.Fir BT below. 60" D.Fir N 61°E 24.6 ft. (N 64°45'E 27.1) with healed blaze and tag. 24" D.Fir S 52°15'W 22.5 ft. with healed blaze and tag. CORNER OF SECTIONS 29, 30, 31 AND 32 Found 1973 Douglas County brass cap up 5" on West slope. 43" Cedar N 55°45'W 19.1 ft. with healed blaze, tag and paint. 14" D.Fir N 2°45'E 25.6 ft. with healed blaze, tag and paint. 17" D.Fir S 25°45'E 39.5 ft. with healed blaze, tag and paint. 20" D.Fir S 2°30'W 53.1 ft. with healed blaze, tag and paint.