

**POINT LEGEND**

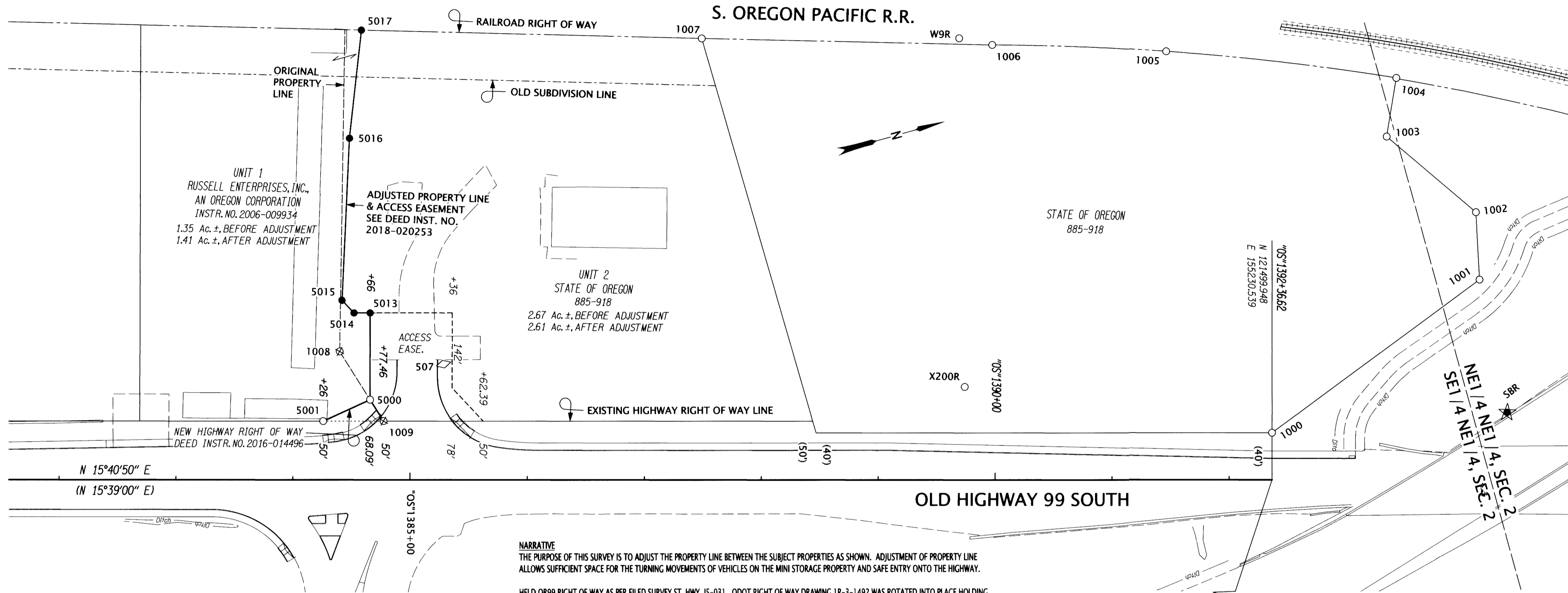
- ★ SET GPS STATION
- FOUND MONUMENT
- SET MONUMENT
- ⊗ DESTROYED MONUMENT
- ◇ FOUND STRATEGIC POINT

NE1/4 SEC. 2, T. 28 S., R. 6 W., W.M.

COURSE	BEARING	DISTANCE
5000 - 5013	N 74° 19' 10" W	73.89'
5013 - 5014	S 15° 40' 50" W	13.76'
5014 - 5015	S 62° 03' 33" W	14.84'
5015 - 5016	N 71° 39' 44" W	137.93'
5016 - 5017	N 67° 59' 29" W	92.71'

RECORD DATA	
( )	ODOT R/W DRG. 48-26-6
NO BRACKET	MEASURED/RESOLVED SUPERCEDES RECORD

FILED  
 Date: 4-14-2020 By: X  
 This survey consist of:  
 Map: H176-65  
 Narrative:  
 Corner Rpt: DOUGLAS COUNTY SURVEYOR



**NARRATIVE**  
 THE PURPOSE OF THIS SURVEY IS TO ADJUST THE PROPERTY LINE BETWEEN THE SUBJECT PROPERTIES AS SHOWN. ADJUSTMENT OF PROPERTY LINE ALLOWS SUFFICIENT SPACE FOR THE TURNING MOVEMENTS OF VEHICLES ON THE MINI STORAGE PROPERTY AND SAFE ENTRY ONTO THE HIGHWAY.

HELD OR99 RIGHT OF WAY AS PER FILED SURVEY ST. HWY. 15-031. ODOT RIGHT OF WAY DRAWING 1R-3-1492 WAS ROTATED INTO PLACE HOLDING 1008 AND ROTATING TO 1007 TO ESTABLISH THE SOUTHERLY AND WESTERLY BOUNDARIES OF THE PROPERTY IN THE AREA OF THE PROPERTY LINE ADJUSTMENT.

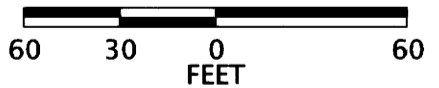
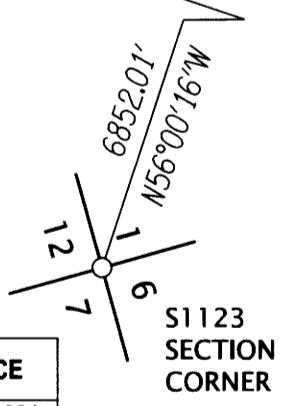
COORDINATES & BASIS OF BEARING ARE TAKEN FROM FILED SURVEY ST. HWY. 15-031 BASED ON THE OREGON COORDINATE REFERENCE SYSTEM (OCRS) COTTAGE GROVE-CANYONVILLE PROJECTION, NAD 83(CORS96) EPOCH2002. THE OCRS COORDINATES ARE EQUAL TO OR CLOSE TO TRUE GROUND DISTANCES. ALL COORDINATES ARE IN INTERNATIONAL FEET.

A LEICA VIVA TS15 TOTAL STATION, WAS USED TO SET PROPERTY LINE ADJUSTMENT MONUMENTS. IT HAS THE FOLLOWING ACCURACY: STANDARD ANGULAR ERROR +/- 1 SECOND; STANDARD DISTANCE ERROR OF +/- 1MM, + 1.5 PPM.

FD. = FOUND ALUM. = ALUMINUM YPC = YELLOW PLASTIC CAP

*[Signature]*  
 DOUGLAS COUNTY PLANNING DIRECTOR  
 DATE 4/9/2020

PT. NO.	OCRS NORTHING	OCRS EASTING	ELEVATION	STATION	OFFSET (- IS LEFT)	DATE	DESCRIPTION	REFERENCE
507	120844.905	154944.384	522.47	*OS*1385+28.61	-98.46	12/11/2012	FD. MAG. NAIL AND WASHER STAMPED "ODOT 507"	ST. HWY. 15-031
1000	121510.759	155192.028	-	*OS*1392+36.62	-40.00	7/25/2012	FD. 5/8" IRON ROD 0.5 FT. BELOW GROUND LEANS SLIGHTLY S.E. FAIR CONDITION	1R-3-1492
1001	121716.783	155114.818	-	-	-	7/25/2012	FD. 5/8" IRON ROD 0.5 FT. ABOVE GROUND LEANS SLIGHTLY N. FAIR CONDITION PADDLE BOARD NEARBY MARKED "SHRW"	1R-3-1492
1002	121729.295	155058.916	-	-	-	7/25/2012	FD. 5/8" IRON ROD WITH 1 1/4" YPC STAMPED "OREGON STATE HIGHWAY DIV" 0.2 FT. ABOVE GROUND GOOD CONDITION PADDLE BOARD NEARBY MARKED "SHRW"	1R-3-1492
1003	121673.161	154976.290	-	-	-	7/25/2012	FD. 5/8" IRON ROD WITH 1 1/4" YPC STAMPED "OREGON STATE HIGHWAY DIV" 0.3 FT. BELOW GROUND GOOD CONDITION PADDLE BOARD NEARBY MARKED "SHRW"	1R-3-1492
1004	121694.582	154930.515	-	-	-	7/25/2012	FD. 5/8" IRON ROD WITH 1 1/4" YPC STAMPED "OREGON STATE HIGHWAY DIV" FLUSH WITH GROUND GOOD CONDITION PADDLE BOARD NEARBY MARKED "SHRW"	1R-3-1492
1005	121511.297	154855.463	-	*OS*1391+46.17	-364.18	7/25/2012	FD. 5/8" IRON ROD WITH REMNANTS OF * YPC VISIBLE. 0.2 FT. ABOVE GROUND GOOD CONDITION PADDLE BOARD NEARBY MARKED "SHRW"	1R-3-1492
1006	121369.700	154809.806	-	*OS*1389+97.51	-369.87	7/25/2012	FD. 5/8" IRON ROD WITH 1 1/4" YPC STAMPED "OREGON STATE HIGHWAY DIV" FLUSH WITH GROUND GOOD CONDITION PADDLE BOARD NEARBY MARKED "SHRW"	1R-3-1492
1007	121131.974	154737.205	-	*OS*1387+49.00	-375.52	7/25/2012	FD. 5/8" IRON ROD 0.1 FT. ABOVE GROUND GOOD CONDITION	1R-3-1492
1008	120762.458	154910.137	-	*OS*1384+39.98	-109.15	7/26/2012	DESTROYED 1" I.D. IRON PIPE LEANS S.W. TIED TOP N.E. EDGE OF PIPE, 0.2 FT. ABOVE GROUND FAIR CONDITION	1R-3-1492
1009	120782.558	154977.235	-	*OS*1384+77.47	-49.99	7/26/2012	DESTROYED 3/4" 6 SIDED IRON ROD 1.0 FT. BELOW RED CINDER GRAVEL, GOOD CONDITION PADDLE BOARD NEARBY MARKED "SHRW"	1R-3-1492
5000	120776.411	154956.705	-	*OS*1384+66.00	-68.09	8/16/2018	FD. 5/8 X 30" IRON REBAR WITH 2" ALUM. CAP STAMPED "ODOT RIGHT OF WAY 5000"	ST. HWY. 15-031
5001	120733.010	154963.310	-	*OS*1384+26.00	-50.00	8/16/2018	FD. 5/8 X 30" IRON REBAR WITH 1 1/4" YPC STAMPED "ODOT RIGHT OF WAY 5001"	ST. HWY. 15-031
5013	120796.381	154885.566	-	*OS*1384+66.00	-141.98	8/23/2018	SET 5/8 X 30" IRON REBAR WITH 2" ALUM. CAP STAMPED "ODOT 5013"	-
5014	120783.132	154881.847	-	*OS*1384+52.24	-141.98	8/18/2018	SET 5/8 X 30" IRON REBAR WITH 2" ALUM. CAP STAMPED "ODOT 5014"	-
5015	120776.179	154868.739	-	*OS*1384+42.00	-152.72	8/18/2018	SET 5/8 X 30" IRON REBAR WITH 2" ALUM. CAP STAMPED "ODOT 5015"	-
5016	120819.576	154737.811	-	*OS*1384+48.40	-290.50	8/18/2018	SET 5/8 X 30" IRON REBAR WITH 2" ALUM. CAP STAMPED "ODOT 5016"	-
5017	120854.320	154651.853	-	*OS*1384+58.62	-382.65	8/23/2018	SET 5/8 X 30" IRON REBAR WITH 2" ALUM. CAP STAMPED "ODOT 5017"	-
SBR	121709.079	155229.702	546.74	-	-	8/28/2012	SET 1" COPPER DISK STAMPED "ODOT CONTROL SBR" IN CONCRETE UTILITY COVER N.W. CORNER OF I-5 BRIDGE OVER HWY 99 BEHIND BARRIER	-
S1123	117668.804	160911.417	-	-	-	9/17/2012	FD. 1 1/4" O.D. PIPE WITH A 2 1/2" BRASS CAP STAMPED " COUNTRY SURVEYORS OFFICE T28S R6W SI S12 R5W S6, S7 1961" 1.1 FT ABOVE GROUND, A LITTLE WOBBLE FAIR CONDITION	C.S. 49/64
W9R	121343.992	154796.700	-	*OS*1389+69.21	-375.54	7/25/2012	FD. 3 1/4" BRASS DISK STAMPED "US GEOLOGICAL SURVEY B.M. ELEVATION ABOVE SEA 501 FEET DATUM B W9 1903" SET IN CONCRETE 0.9 FT. BELOW GROUND GOOD CONDITION ODOT ORANGE CARSONITE WITNESS POST NEARBY	ST. HWY. 15-014
X200R	121268.407	155083.519	-	*OS*1389+73.96	-78.97	7/26/2012	FD. 1 1/2" BRASS DISK STAMPED "ODOT CONTROL 200" FLUSH IN AC GROUND. GOOD CONDITION IN PARKING AREA OF SHADY MAINTENANCE.	ST. HWY. 15-014



REGISTERED PROFESSIONAL LAND SURVEYOR  
*Marshall R. Wagstaff*  
 OREGON  
 JANUARY 9, 2001  
 MARSHALL R. WAGSTAFF  
 49476LS  
 RENEWS: JUNE 30, 2020

**OREGON DEPARTMENT OF TRANSPORTATION**  
 PROPERTY LINE ADJUSTMENT FOR ODOT  
 SHADY MAINTENANCE STATION & RUSSELL ENTERPRISES, INC.  
 OAKLAND - SHADY HIGHWAY (OLD HWY. 99) IN DOUGLAS COUNTY  
 ODOT FILE: 17918RW.DGN :: BLA  
 PLANNING DEPARTMENT FILE M20-005  
 ODOT REGION 3 TECH CENTER  
 3500 NW STEWART PKWY.  
 ROSEBURG, OR. 97470  
 APRIL 7, 2020  
 SCALE: 1" = 60'  
 SHEET 1 OF 1

MAP FILE H176-65

MAP FILE H176-65