

MAP OF SURVEY

LOCATED in the North 1/2 of Section 24, T. 25 S., R. 2 W., W.M.
in Douglas County, Oregon.

March, 2020

FILED
DATE: 3-23-2020 BY: DA
This survey consists of:
MAP: M176-59
DOUGLAS COUNTY SURVEYOR

MAP FILE M176-59

SURVEYED FOR: ROSEBURG RESOURCES CO.
P.O. BOX 1088
ROSEBURG, OREGON 97470

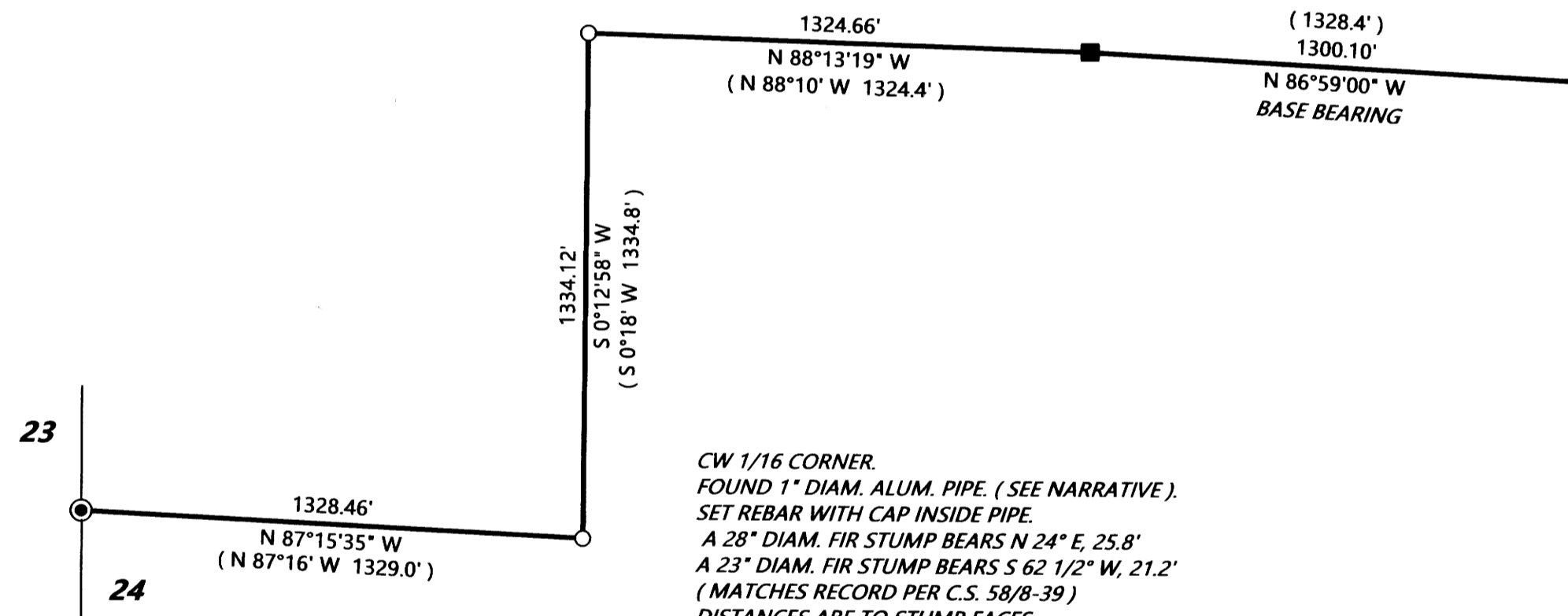
SURVEYED BY: DAVID EDWARDS LAND SURVEYING
P.O. BOX 361
OAKLAND, OREGON 97462
PHONE: (541) 459-0512



NW 1/16 CORNER SET AT MEAN POSITION
FROM THE FOLLOWING:
A 48" DIAM., 15 FOOT TALLS FIR SNAG (C.S. 58/8-40)
BEARS S 83 1/2° E, 7.2' (S 84° E, 7.0').
A 24" DIAM. HEMLOCK WITH HEALED BLAZE (M 16-5)
BEARS S 36 1/2° E, 32.2' (S 37° E, 32.6').
A 20" DIAM, 6 FOOT TALL STUMP WITH VIS. SCRIBE (M 16-5)
BEARS S 28 1/2° W, 22.2' (S 29 1/2° W, 22.3').
NEW BEARING TREE:
A 10" DIAM. HEMLOCK SCRIBED "NW 1/16 S24 BT"
BEARS S 30° W, 3.2'.
A SIX FOOT STEEL POST IS SET 2' SOUTH.

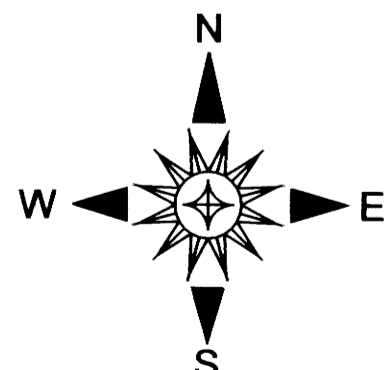
CN 1/16 CORNER. (SEE NARRATIVE).
A 48" DIAM. FIR STUMP BEARS S 13° E, 16.6'
MEASUREMENT TO FACE.
ALL OTHER PREVIOUS B.T.'S GONE.
NEW BEARING TREES:
A 10" DIAM. FIR BEARS N 54° E, 5.3'
A 10" DIAM. FIR BEARS S 57° E, 13.0'
BOTH SCRIBED "CN 1/16 S24 BT".
A SIX FOOT STEEL POST IS SET 2' S 87° E.

NE 1/16 CORNER
SECTION 24.
A SIX FOOT
STEEL POST IS
SET 2' N 87° W.



CW 1/16 CORNER.
FOUND 1" DIAM. ALUM. PIPE. (SEE NARRATIVE).
SET REBAR WITH CAP INSIDE PIPE.
A 28" DIAM. FIR STUMP BEARS N 24° E, 25.8'
A 23" DIAM. FIR STUMP BEARS S 62 1/2° W, 21.2'
(MATCHES RECORD PER C.S. 58/8-39)
DISTANCES ARE TO STUMP FACES.
NEW BEARING TREES:
AN 11" DIAM. FIR BEARS N 3° E, 6.1'
A 9" DIAM. FIR BEARS S 82° W, 16.6'
BOTH SCRIBED "CW 1/16 S24 BT".
A SIX FOOT STEEL POST IS SET 2' NORTH.

1/4 CORNER.
18" DIAM. FIR BEARS S 57 1/4° E, 18.1'
17" DIAM. FIR BEARS S 29 1/2° W, 24.6'
BOTH WITH HEALED BLAZES.
A SIX FOOT STEEL POST IS
SET 2' S 87° E.



LEGEND

- ⊙ INDICATES B.L.M. BRASS CAP FOUND.
- INDICATES 5/8" DIAM. REBAR WITH CAP FOUND PER M 142-79. (CONDITION PER C.S.65/95-39).
- INDICATES 5/8" DIAM. IRON PIPE FOUND PER C.S. 58/8-38.
- INDICATES 5/8" X 30" STEEL REBAR WITH 2 1/2" DIAM. ALUMINUM CAP MKD. AS PER THE 2009 B.L.M. MANUAL AND ALSO MKD. "ROSEBURG RESOURCES CO." AND "L.S. 2339" AND "2020".
- () DENOTES RECORD DATA PER M 16-5.

SCALE: 1" = 400'

BASIS OF BEARINGS: M 16-5 AS SHOWN.

NARRATIVE

THE PURPOSE OF THIS SURVEY IS TO MARK THOSE BOUNDARIES SHOWN AS BOLD LINES HEREON. A RANDOM TRAVERSE WAS RUN NEAR THE DESIRED LINES WHICH TIED IN THE CONTROLLING MONUMENTS WHICH WERE ORIGINALLY ESTABLISHED ON SURVEY M 16-5. THE CENTER-NORTH 1/16 CORNER WAS REMONUMENTED ON C.S. 58/8-38 AND THAT IRON PIPE WAS ACCEPTED FOR THIS SURVEY. THE CENTER-WEST 1/16 CORNER WAS REMONUMENTED BY PERSONS UNKNOWN WITH A 1" DIAMETER ALUMINUM PIPE WHICH FITS THE REMAINS OF THE M16-5 BEARING TREES AND THIS POSITION WAS ALSO ACCEPTED. THIS PIPE COULD POSSIBLY HAVE BEEN SET ON C.S. 58/8-39. THE NORTHWEST 1/16 CORNER WAS REMONUMENTED FROM THE M 16-5 BEARING TREES TOGETHER WITH THE BEARING TREE ESTABLISHED ON C.S. 58/8-40, AS NOTED HEREON. THE DESIRED BOUNDARIES WERE MARKED BY BLAZING TREES ON EACH SIDE OF LINE, BY SETTING 6 FOOT STEEL POSTS ALONG THE BOUNDARIES AT INTERVALS OF 200 FEET OR LESS AND BY HANGING LIBERAL AMOUNTS OF RED FLAGGING ALONG THE TRUE LINE.

FIELD CREW: BRANT MILLER AND ERIC SPRINKLE.

EQUIPMENT: NIKON TOTAL STATION.

COMPUTATIONS AND DRAFTING: DAVID EDWARDS.