

RECORD OF SURVEY  
FOR  
**ROSEBURG FOREST PRODUCTS**

IN THE  
SOUTH HALF OF SECTION 26  
T 19 S, R 8 W, W.M.

DOUGLAS COUNTY, OREGON

FEBRUARY 10, 2020

**LEGEND**

● .....Found Monument as noted, See CORNER DATA.

□ .....Steel Post per M170-32

Data of, or computed from, the following:

[ ] ... BLM Plat approved August 31, 1983

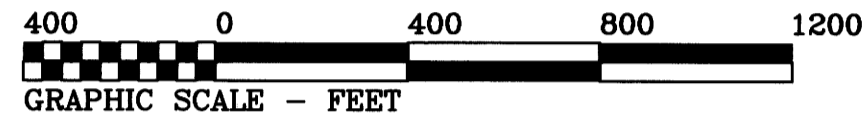
( ) ... BLM Plat approved May 29, 1953

< > ... M98-55 { } ... M170-32

— Lines marked with 60" steel posts, red painted blazes and red ribbon.

**NARRATIVE**

The purpose of this survey was to find or set monuments at my client's boundary corners and mark the lines as shown. I found the 4 monuments per the sources indicated, accepted their positions, and posted the lines.



FILED  
Date: 3-2-2020 By: D  
This survey consists of:  
Map: M176-52  
Narrative:  
Corner Rpt:  
DOUGLAS COUNTY  
SURVEYOR

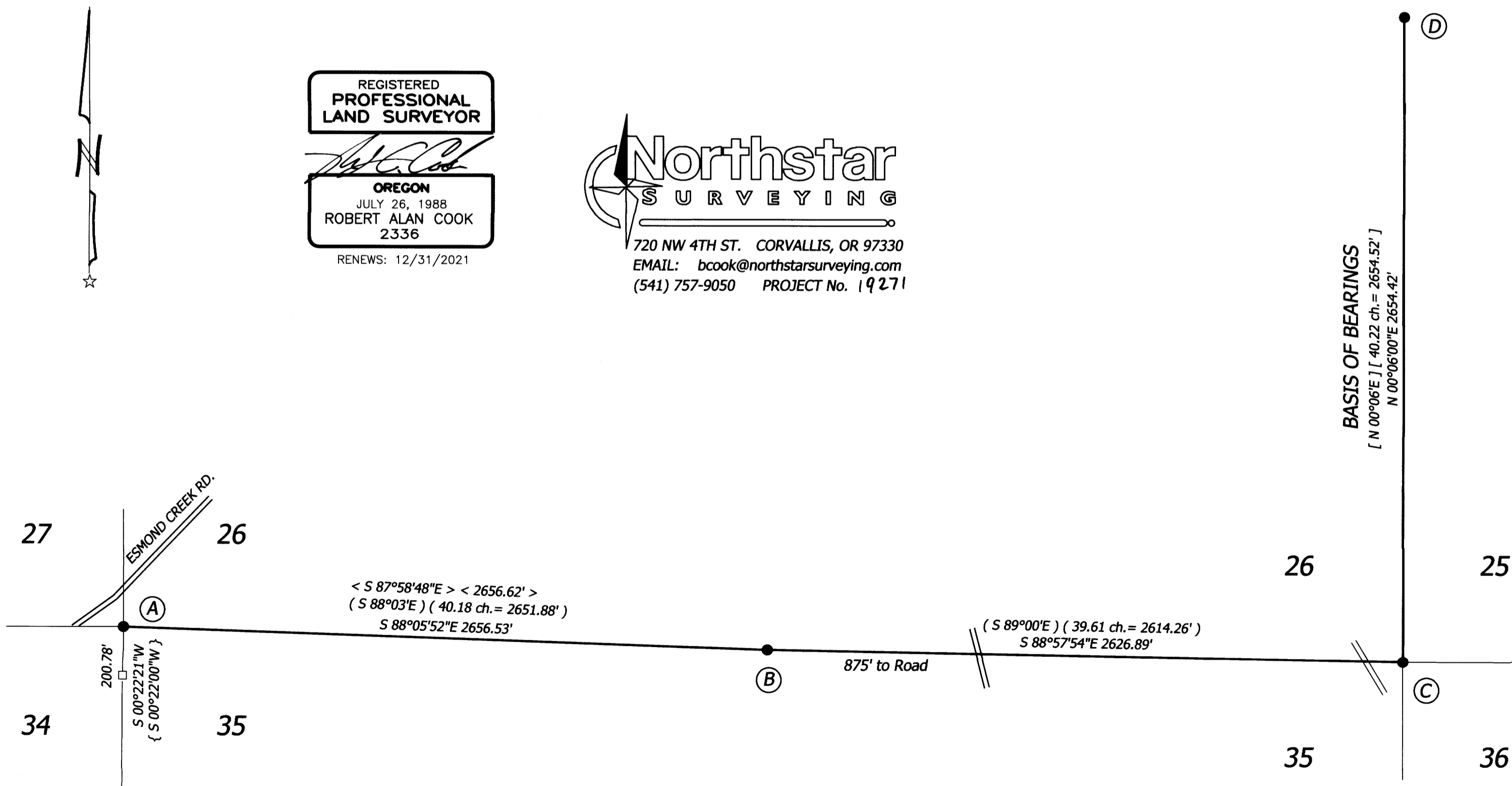
MAP FILE M176-52

REGISTERED  
PROFESSIONAL  
LAND SURVEYOR

OREGON  
JULY 26, 1988  
ROBERT ALAN COOK  
2336  
RENEWS: 12/31/2021

Northstar  
SURVEYING

720 NW 4TH ST. CORVALLIS, OR 97330  
EMAIL: bcook@northstarsurveying.com  
(541) 757-9050 PROJECT No. 19271



**CORNER DATA**

- (A) **CORNER OF SECTIONS 26, 27, 34 AND 35 (500200)**  
Found 1980 BLM brass cap on pipe flush with ground. Monument lies 8 feet north of the north bank of Esmond Creek and 130 feet south of main road. Steel post risers are 2 feet South and 1.2 feet North. RM set below lies 0.16 ft. North of line.  
Set 1/2" x 24" rebar with orange cap stamped "CONTROL POINT"  
S 88°03'54"E 287.24 ft.  
17" Alder S 7°E 126.2 ft. with tag and paint.  
14" Alder N 70°E 22.6 ft. with tag and paint.  
11" Alder {S 24°W 37.6'} seen down in creek with tag.
- (B) **1/4 CORNER OF SECTIONS 26 AND 35 (540200)**  
Found 1952 2-1/2" GLO brass cap on 3/4" pipe up 7" in Cedars and Hemlocks. I set steel post as riser.  
38" Hemlock N 16°E 39.5 feet with healed face, tag and paint.
- (C) **CORNER OF SECTIONS 25, 26, 35 AND 36 (600200)**  
Found 1952 1-1/2" pipe with 2-1/2" brass cap up 11" and 1.8 ft. East of a large boulder. We set a steel post 1 foot South. Overgrown road lies West about 100 ft.  
35" D.Fir N 49°E 19 lks. with healed face, tag and paint.  
30" D.Fir snag S 64°E 50 lks. with healed face.  
25" Cedar S 26°W 96 lks. with healed face, tag and paint.
- (D) **1/4 CORNER OF SECTIONS 25 AND 26 (600240)**  
Found 1980 BLM brass cap up 3" on West slope near top of ridge. A steel post riser is North 1.3 ft.  
27" D.Fir N 13°E 27 lks. with healed face.  
20" D.Fir stump N 78°45'W 39.5 lks.

MAP FILE M176-52