

RECORD OF SURVEY

TAHKENITCH SUBSTATION
LYING WITHIN
THE SW 1/4 SECTION 13, T21S., R.12W., W.M.
THE NW 1/4 SECTION 24, T21S., R.12W., W.M.
DOUGLAS COUNTY, OREGON

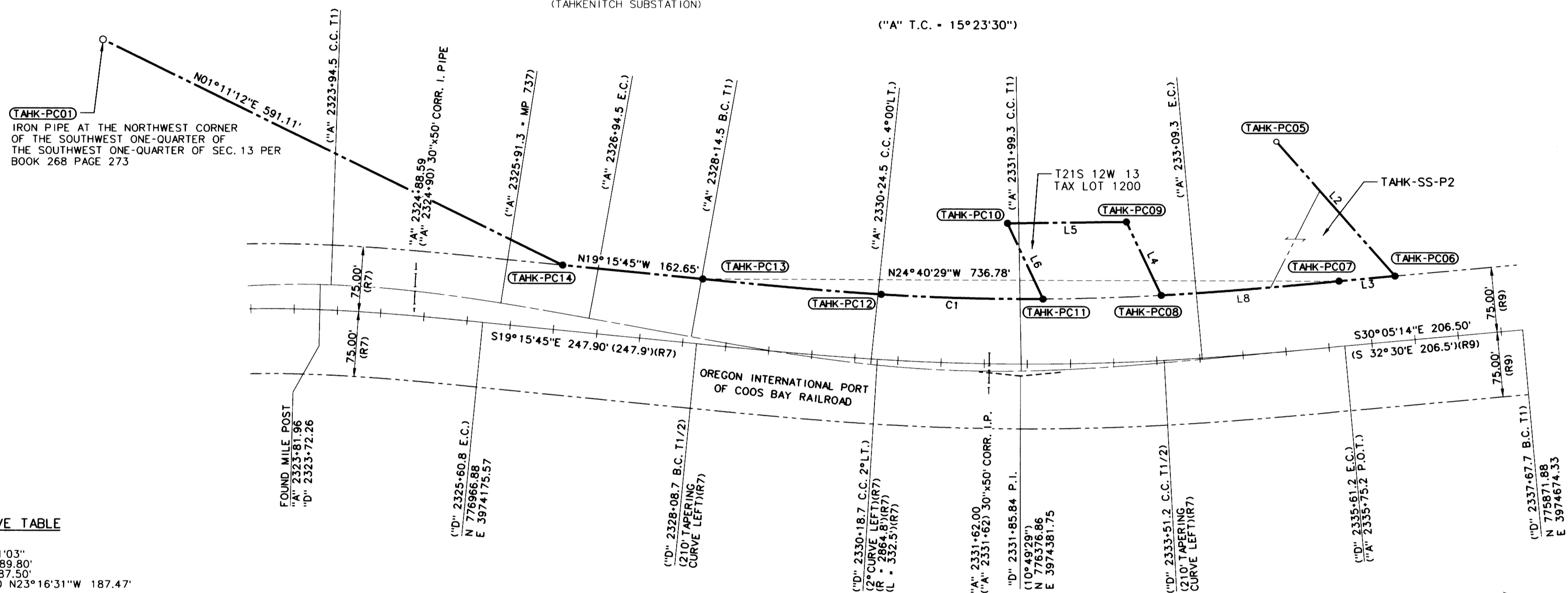
FILED
Date: 9-3-2019 By: Di
This survey consists of:
Map: M176-4 A-F
Narrative: _____
Corner Rpt: _____

DOUGLAS COUNTY
SURVEYOR

MAP FILE M176-4F

LEGEND

- FOUND MONUMENT NOTED IN TABLE (SHEET 1)
- SET MONUMENT AS NOTED IN TABLE (THIS SHEET)
- () RECORD DATA PER R10 UNLESS OTHERWISE NOTED PER REFERENCE LIST
- XXXX MONUMENT NUMBER
- BPA PROPERTY LINE
- BPA INTERIOR PROPERTY LINE
- RAILROAD RIGHT-OF-WAY LINE
- RAILROAD ALIGNMENT "A"
- RAILROAD ALIGNMENT "D"
- CULVERT (AS NOTED)



CURVE TABLE

C1
A 3°51'03"
R = 2789.80'
L = 187.50'
CHORD N23°16'31"W 187.47'

LINE TABLE

L3
N30°05'14"W 65.04'
(N29°49'00"W)(R4)

REGISTERED
PROFESSIONAL
LAND SURVEYOR

(Signature)

OREGON
JANUARY 8, 2019
REED CARLSON BEAUDUY
93377PLS

RENEWAL: DEC. 31, 2021
SIGNED: Aug. 26, 2019

GRID
SCALE 1" = 100'
100 50 0 100
FEET

SET MONUMENT TABLE

POINT ID	GRID NORTHING	GRID EASTING	DATE	DESCRIPTION
TAHK-PC06	776031.87	3974668.31	05/21/19	SET 3-1/4" BPA ALUMINIUM CAP ON 5/8" X 30" REBAR STAMPED "TAHK-PC06 93377PLS OBE19", FLUSH
TAHK-PC07	776088.14	3974635.70	05/21/19	SET 3-1/4" BPA ALUMINIUM CAP ON 5/8" X 30" REBAR STAMPED "TAHK-PC07 93377PLS OBE19", FLUSH
TAHK-PC08	776268.19	3974534.48	05/22/19	SET 3-1/4" BPA ALUMINIUM CAP ON 5/8" X 30" REBAR STAMPED "TAHK-PC08 93377PLS OBE19", FLUSH
TAHK-PC09	776340.34	3974594.21	05/21/19	SET 3-1/4" BPA ALUMINIUM CAP ON 5/8" X 30" REBAR STAMPED "TAHK-PC09 93377PLS OBE19", FLUSH
TAHK-PC10	776464.69	3974534.92	05/21/19	SET 3-1/4" BPA ALUMINIUM CAP ON 5/8" X 30" REBAR STAMPED "TAHK-PC10 93377PLS OBE19", FLUSH
TAHK-PC11	776390.66	3974473.13	05/21/19	SET 3-1/4" BPA ALUMINIUM CAP ON 5/8" X 30" REBAR STAMPED "TAHK-PC11 93377PLS OBE19", FLUSH
TAHK-PC12	776562.86	3974399.05	05/28/19	SET 3-1/4" BPA ALUMINIUM CAP ON 5/8" X 30" REBAR STAMPED "TAHK-PC12 93377PLS OBE19", FLUSH
TAHK-PC13	776757.61	3974328.14	05/22/19	SET 3-1/4" BPA ALUMINIUM CAP ON 5/8" X 30" REBAR STAMPED "TAHK-PC13 93377PLS OBE19", FLUSH
TAHK-PC14	776911.15	3974274.48	05/28/19	SET 3-1/4" BPA ALUMINIUM CAP ON 5/8" X 30" REBAR STAMPED "TAHK-PC14 93377PLS OBE19", FLUSH

FILE NAME: WO_356103-68_ROS.dgn

A DOWL LLC Company

CORPORATE OFFICE:
920 COUNTRY CLUB ROAD, SUITE 100B EUGENE,
OREGON 97401-6089
REGIONAL OFFICES:
LAKE OSWEGO; SALEM; MEDFORD, OREGON;
VANCOUVER, WASHINGTON

TAHKENITCH SUBSTATION
RECORD OF SURVEY
DOUGLAS COUNTY, OREGON

DESIGNED: R. BEAUDUY
DRAWN: A. DOUGHAN

CHK'D: N. WARDELL

AUGUST, 2019
SCALE 1"=100'
SHEET 6 OF 6

PROJ. NO. 684-004.61
SER. NO. 336869-C

MAP FILE M176-4F