

RECORD OF SURVEY

TAHKENITCH SUBSTATION
LYING WITHIN
THE SW 1/4 SECTION 13, T21S., R.12W., W.M.
THE NW 1/4 SECTION 24, T21S., R.12W., W.M.
DOUGLAS COUNTY, OREGON

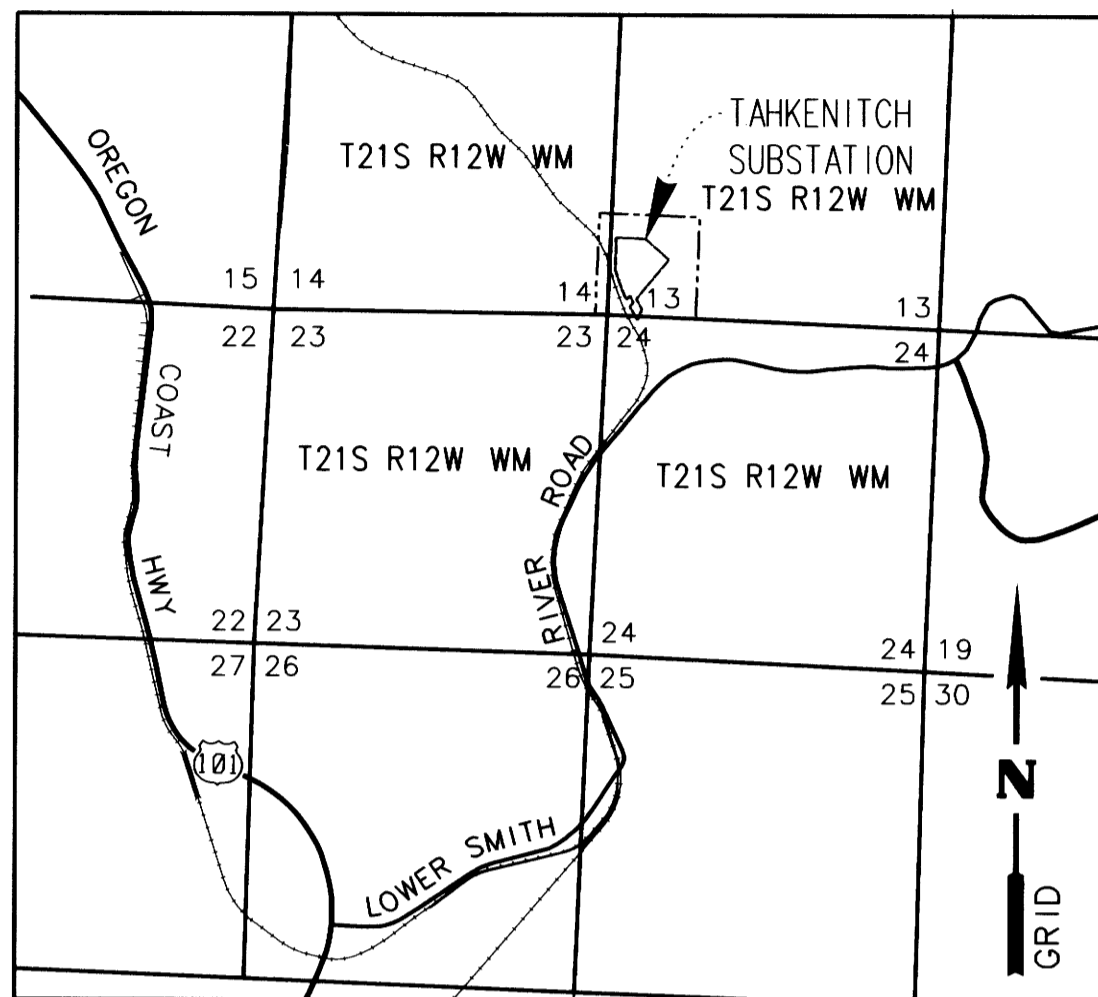
FILED

Date: 9-3-2019 By: DR
This survey consists of:
Map: M176-4 A-F
Narrative: _____
Corner Rpt: _____

DOUGLAS COUNTY
SURVEYOR

SHEET INDEX

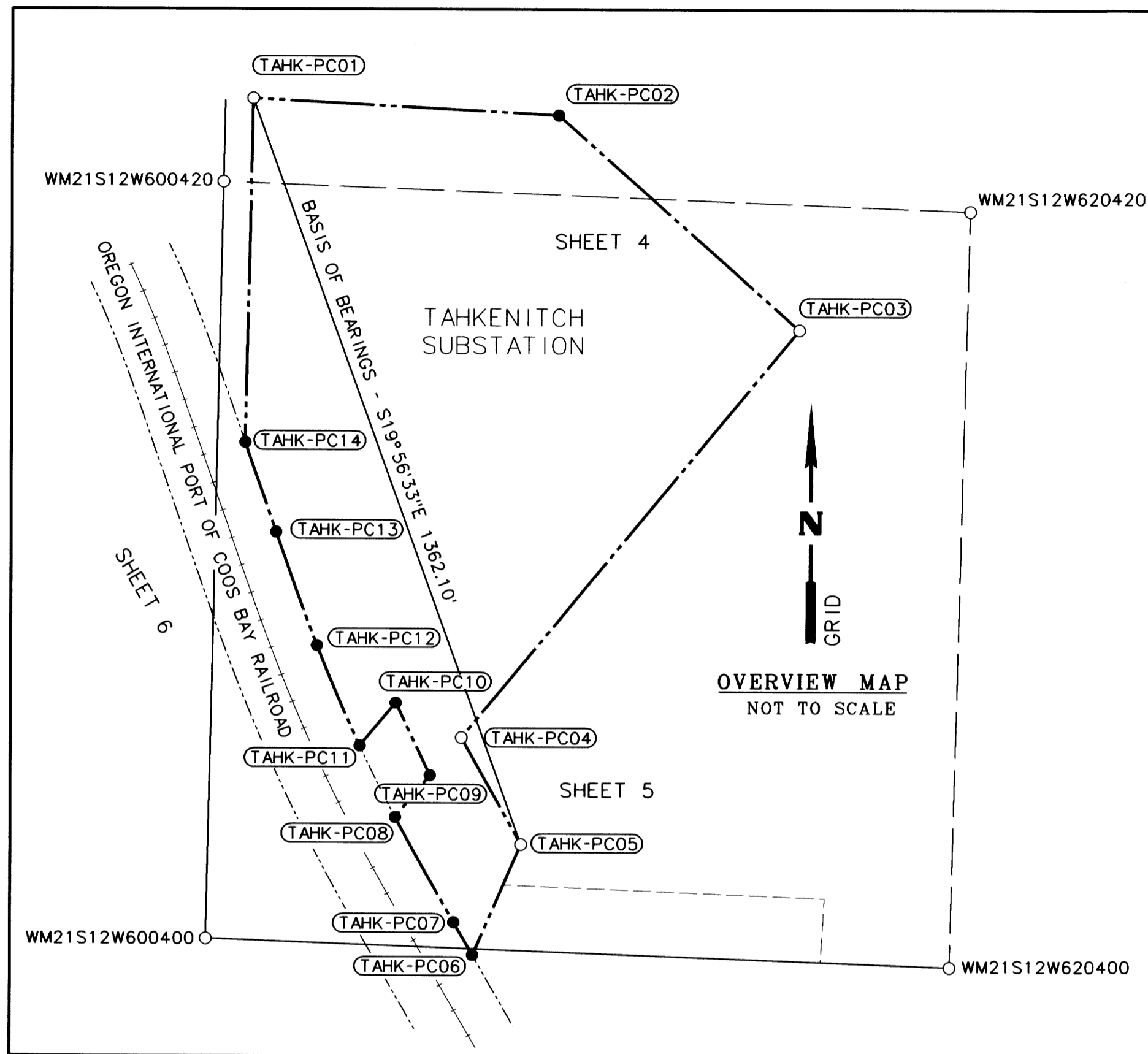
1. VICINITY MAP, SHEET LAYOUT, CONTROL NARRATIVE
- 2.-3. NARRATIVE AND REFERENCES
- 4.-5. SURVEY
6. RAILROAD DETAIL



VICINITY MAP
NOT TO SCALE

LEGEND

- BPA PROPERTY LINE
- PLSS SECTION LINE
- ONE-SIXTEENTH LINE
- PRIVATE PROPERTY LINE
- RAILROAD RIGHT-OF-WAY LINE
- RAILROAD CENTERLINE
- FOUND MONUMENT
- SET MONUMENT
- XXXX MONUMENT NUMBER



OVERVIEW MAP
NOT TO SCALE

CONTROL NARRATIVE

THE FIELD SURVEY WAS PERFORMED USING TWO TRIMBLE R8-GNSS MODEL 3 RECEIVERS, ONE TRIMBLE S8 ROBOTIC TOTAL STATION, AND ONE TRIMBLE TSC3 CONTROLLER WITH TRIMBLE ACCESS SOFTWARE. ALL FOUND MONUMENTS IN THIS SURVEY WERE DOUBLE-TIED TO CHECK QUALITY OF THE FIELD SURVEY DATA. A COMBINATION OF ORGN-RTK MEASUREMENTS, BASE-ROVER RTK MEASUREMENTS, AND TERRESTRIAL MEASUREMENTS WERE TAKEN. THE SURVEY DATA WAS ADJUSTED BY LEAST SQUARES USING TRIMBLE BUSINESS CENTER VERSION 5.00.

BASIS OF BEARING AND GEOMETRIC DATUM

BEARINGS AND COORDINATES SHOWN HEREON ARE BASED ON OREGON STATE PLANE COORDINATE SYSTEM SOUTH ZONE (3602) NAD83 (2011) EPOCH 2010.00 (APPLIED TO THE LINE BETWEEN FOUND MONUMENT NUMBERED TAHK-PC01 AND TAHK-PC05) ESTABLISHED IN THIS SURVEY RESULTING IN A BEARING OF SOUTH 19°56'33" EAST, 1362.10 FEET (GROUND). THIS SURVEY USES INTERNATIONAL FEET UNITS.

DISTANCES HEREON ARE INTERNATIONAL FEET GROUND DISTANCES. THE PROJECT COMBINED GROUND TO GRID SCALE FACTOR IS 0.99994289. COORDINATES SHOWN HEREON ARE GRID COORDINATES. THE CONVERGENCE ANGLE POINT AT POINT TAHK-PC01 IS -2°27'09"

FOUND MONUMENT TABLE

POINT ID	GRID NORTHING	GRID EASTING	DATE	DESCRIPTION
TAHK-PC01	777502.10	3974286.73	04/16/19	FD 1" O.D. IRON PIPE W/ 3-1/4" BPA ALUMINIUM CAP W/ PUNCH MARK, DN 3.0' (DEED VOLUME 268, PAGE 273)(1957)
TAHK-PC03	777105.58	3975227.99	04/16/19	FD 3-1/4" BPA ALUMINIUM CAP W/ PUNCH MARK ON 5/8" REBAR, DN 0.4' (BPA DWG. NO. 123437)(1997)
TAHK-PC04	776405.08	3974648.10	04/15/19	FD 3-1/4" BPA ALUMINIUM CAP W/ PUNCH MARK ON 5/8" REBAR, DN 0.3' (BPA DWG. NO. 123437)(1997)
TAHK-PC05	776221.75	3974751.28	04/15/19	FD 3-1/4" BPA ALUMINIUM CAP W/ PUNCH MARK ON 5/8" REBAR, DN 0.2' (BPA DWG. NO. 123437)(1997)
WM21S12W600400	776059.28	3974209.02	04/17/19	FD 2-1/2" O.D. IP W/ 2-1/2" BRASS CAP STAMPED "PLS497 1979 T21S R12W 14-13-23-24", UP 0.9' (M114-22, R. HINTZ)
WM21S12W600420	777358.85	3974235.94	04/16/19	FD 2-1/2" O.D. IP W/ 2-1/2" BRASS CAP STAMPED "PLS497 1981 T21S R12W S 1-16 S14-S13 1981", UP 0.2' (M114-22, R. HINTZ)
WM21S12W620400	776012.38	3975489.55	04/18/19	FD 2-1/2" O.D. IP W/ 2-1/2" BRASS CAP STAMPED "PLS497 1981 T21S R12W W 1-16 S13-S24 1981", UP 0.3', LEANING SE - TIED IN PLACE (M114-22, R. HINTZ)
WM21S12W620420	777309.79	3975521.57	04/17/19	FD 2-1/2" O.D. IP W/ 2-1/2" BRASS CAP STAMPED "PLS497 1981 T21S R12W SW 1-16 S13-1981", DN 0.2' (M114-22, R. HINTZ)

REGISTERED
PROFESSIONAL
LAND SURVEYOR

[Signature]

OREGON
JANUARY 8, 2019
REED CARLSON BEAUDUY
93377PLS
RENEWAL: DEC. 31, 2021
SIGNED: Aug. 26, 2019

FILE NAME: WO_356103-68_ROS.dgn

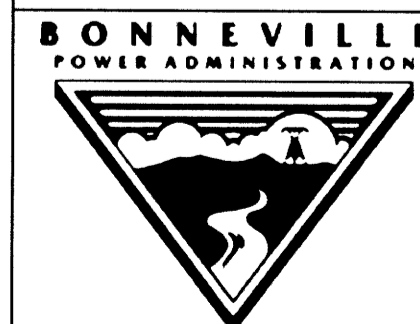
CONTROL MONUMENT TABLE

POINT ID	GRID NORTHING	GRID EASTING	DATE	DESCRIPTION
LIDARTAH	776829.00	3974438.13	04/15/19	FD 3-1/4" BPA ALUMINIUM CAP IN CONCRETE, STAMPED "LIDARTAH WHP08", DN 1.0'
L119ORDOU	776709.68	3974398.91	04/15/19	FD 5/8" IR W/ RPC "OBEC CONTROL", FLUSH
REED	761962.53	3967494.79	-	ORGN CORS STATION "REED" REEDSPORT
TAHK-N508.90	777300.39	3974902.71	04/15/19	FD 3-1/4" BPA ALUMINIUM CAP IN CONCRETE, STAMPED "N509.00", FLUSH
TAHK-S141.03	776799.91	3974488.17	04/15/19	FD 3-1/4" BPA ALUMINIUM CAP IN CONCRETE, STAMPED "S141.03 SM1-1996", DN 0.2'
TAHK-S275.30	776696.52	3974402.54	04/15/19	FD 2" O.D. IRON PIPE W/ WOOD PLUG AND TACK, DN 0.2'
TAHK-W176	777020.77	3974442.58	04/15/19	FD 3-1/4" BPA ALUMINIUM CAP IN CONCRETE, STAMPED "TAHK-W176 OBE17", DN 0.2'

DN - DOWN
FD - FOUND
W/ - WITH
O.D. = OUTSIDE DIAMETER



CORPORATE OFFICE:
920 COUNTRY CLUB ROAD, SUITE 100B EUGENE,
OREGON 97401-6089
REGIONAL OFFICES:
LAKE OSWEGO, SALEM, MEDFORD, OREGON;
VANCOUVER, WASHINGTON



TAHKENITCH SUBSTATION
RECORD OF SURVEY
DOUGLAS COUNTY, OREGON

AUGUST, 2019
NO SCALE
SHEET 1 OF 6

DESIGNED: R. BEAUDUY
DRAWN: A. DOUGHAN
CHK'D: N. WARDELL
PROJ. NO. 684-004.61
SER. NO. 336869-C

MAP FILE M176-4A

MAP FILE M176-4A