

# MAP OF SURVEY

SURVEY FOR: LONE ROCK TIMBERLAND CO.  
 P.O BOX 1127 ROSEBURG, OR 97470  
 SURVEY BY: LONE ROCK TIMBER MANAGEMENT CO.  
 P.O. BOX 1127 ROSEBURG, OR 97470  
 SECTION 28, TOWNSHIP 27 SOUTH, RANGE 4 WEST, W.M.  
 DOUGLAS COUNTY, OREGON  
 DATE: FEBRUARY 2020 TRACT: LRT BARBER

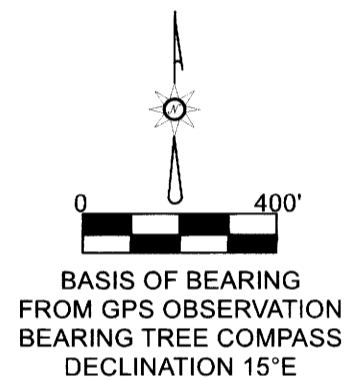
## CORNER INFORMATION

- 1) QUARTER CORNER BETWEEN SECTIONS 21 AND 28 GCDB 340300  
 FOUND 1963 DOUGLAS COUNTY SURVEYOR'S BRASS CAP MARKED T27S R4W 1/4 S21 | S28  
 -- 21" OREGON WHITE OAK (ORIGINAL) BEARS S 83 1/2"E 14.4 FT.(RECORD S79"E 14.5 FT.) TAG AND HEALED FACE.  
 -- 17" OREGON WHITE OAK (ORIGINAL) BEARS N 27 1/2"E 34.3 FT.(RECORD N35"E 34.3 FT.) HEALED FACE AND WE TAG.  
 -- 27" DOUGLAS-FIR BEARS BEARS N 14"W 68.1 FT. (RECORD N13 1/2"W 68.5 FT.) HEALED FACE AND TAG.  
 -- 13" DOUGLAS-FIR BEARS S 8 1/4"W 36.8 FT. WE SCRIBE T27S R4W S28 1/4 BT AND TAG.  
 -- SOUTHEAST FIR BT IS DOWN AND TIPPED OUT TO THE WEST.  
 -- SOUTHWEST FIR STUMP FOUND AT RECORD IS BADLY ROTTED.  
 CORNER LIES AT NORTHEAST CORNER OF CLEAR CUT IN GRASSY AREA WITH OAK AND FIR SURROUNDING, APPROXIMATELY 0.9 FT ABOVE GROUND LEVEL. 11.0 FT EAST OF FENCELINE.
- 2) SECTION CORNER OF SECTIONS 21, 22, 27 AND 28 GCDB 400300  
 FOUND 1 3/8" AUTO AXLE AS PER C.S. 37/144  
 -- 40" DOUGLAS-FIR BEARS N 47 1/4"E 25.8 FT. (RECORD N51"E 25.6 FT.) HEALED FACE AND TAG.  
 -- 16" BLACK OAK BEARS S 5"W 26.3 FT. (RECORD S6"W 26.3 FT.) HEALED FACE AND WE TAG.  
 -- 30" DOUGLAS-FIR BEARS N 48 1/4"W 20.9 FT. (RECORD N47"W 20.5 FT.) HEALED FACE AND TAG.  
 -- 30" OREGON WHITE OAK FOUND AT RECORD S 1 1/2"W 137.0 FT. HEALED FACE AND TAG.  
 CORNER LIES AT NORTHWEST CORNER OF OPEN PASTURE 4.2 FT. EAST OF EXISTING FENCE LINE APPROXIMATELY 0.5 FT. ABOVE GROUND LEVEL. ANGLE IRON NOTED IN C.S. 64/3 FOUND AT RECORD AND IS NOW AT GROUND LEVEL.
- 3) PROPERTY CORNER  
 SET 5/8" X 40" IRON ROD WITH YELLOW PLASTIC CAP MARKED LONE ROCK TIMBER LS 2291  
 -- 10" INCENSE CEDAR BEARS S5"W 8.5 FT. (TAPE AND COMPASS). WE TAG AND SCRIBE BT.  
 CORNER LIES IN NORTH-SOUTH RUNNING EXISTING FENCE LINE AT GROUND LEVEL. WE PLACE 5 1/2 FT. U-POST 1.0 FT. WEST.
- 4) PROPERTY CORNER  
 SET 5/8" X 40" IRON ROD WITH YELLOW PLASTIC CAP MARKED LONE ROCK TIMBER LS 2291  
 -- 16" OREGON WHITE OAK BEARS S24"E 22.9 FT. (TAPE AND COMPASS). WE TAG AND SCRIBE BT.  
 CORNER LIES IN NORTH-SOUTH RUNNING EXISTING FENCE LINE AT GROUND LEVEL. WE PLACE 5 1/2 FT U-POST 1.0 FT. WEST.
- 5) PROPERTY CORNER  
 SET 5/8" X 40" IRON ROD WITH YELLOW PLASTIC CAP MARKED LONE ROCK TIMBER LS 2291  
 -- 8" OREGON WHITE OAK BEARS N12"W 6.2 FT. (TAPE AND COMPASS). WE TAG AND SCRIBE BT.  
 CORNER LIES 0.5 FT. NORTH OF EXISTING FENCE CORNER POST, FENCE LINES RUNNING NORTH AND WEST 0.3 FT. ABOVE GROUND LEVEL. WE PLACE 5 1/2 FT. U-POST 1.0 FT. NORTH.
- 6) QUARTER CORNER BETWEEN SECTIONS 27 AND 28 GCDB 400240  
 SET 5/8" X 40" IRON ROD WITH 2.5" ALUMINUM CAP MARKED LONE ROCK TIMBER T27S R4W 1/4 S27 | S28 2019 LS 2291  
 -- 25" OREGON WHITE OAK BEARS N 76 1/2"E 141.6 FT. WE SCRIBE T27S R4W S27 1/4 BT AND TAG.  
 -- 42" DOUGLAS-FIR BEARS N 33 3/4"W 384.4 FT. WE SCRIBE T27S R4W S28 1/4 BT AND TAG.  
 -- 30" OREGON WHITE OAK BEARS N 88 1/2"E 265.7 FT. (POSSIBLE RECORD N87"E 264 FT.) CUT OUT FACE AND WE TAG.  
 -- 5/8" IRON ROD WITH YELLOW PLASTIC CAP MARKED LONE ROCK TIMBER LS2291 BEARS N 0°41'10"E 425.83 FT. (CORNER (5) ON MAP).  
 -- 5/8" IRON ROD WITH YELLOW PLASTIC CAP MARKED LONE ROCK TIMBER LS2291 BEARS N28°38'12"W 489.82 FT. (CORNER (7) ON MAP).  
 CORNER LIES IN OPEN PASTURE ON WEST FACING SLOPE APPROXIMATELY 150 FT NORTH-EAST OF LARGE POND. WE BURY CORNER 0.5 FT. BELOW GROUND LEVEL AND PLACE A ROCK OVER TOP OF CORNER. WE PLACE A 5 1/2 FT. T-POST WITH METAL PLATE AND TAG 1.0 FT. NORTH.
- 7) PROPERTY CORNER  
 SET 5/8" X 40" IRON ROD WITH YELLOW PLASTIC CAP MARKED LONE ROCK TIMBER LS 2291  
 -- 17" INCENSE CEDAR BEARS N81"E 26.4 FT. (TAPE AND COMPASS). WE TAG AND SCRIBE BT.  
 CORNER LIES IN EXISTING EAST-WEST RUNNING FENCE LINE 4 FT WEST OF CROSS FENCE JUNCTION AT GROUND LEVEL. WE PLACE 5 1/2 FT. U-POST 1.0 FT. NORTH.
- 8) PROPERTY CORNER  
 SET 5/8" X 40" IRON ROD WITH YELLOW PLASTIC CAP MARKED LONE ROCK TIMBER LS 2291  
 -- 17" OREGON WHITE OAK BEARS S54"E 14.8 FT. (TAPE AND COMPASS). WE TAG AND SCRIBE BT.  
 CORNER LIES IN EAST-WEST RUNNING EXISTING FENCE LINE AT GROUND LEVEL. WE PLACE 5 1/2 FT. U-POST 1.0 FT. NORTH.
- 9) PROPERTY CORNER  
 SET 5/8" X 40" IRON ROD WITH YELLOW PLASTIC CAP MARKED LONE ROCK TIMBER LS 2291  
 -- 16" INCENSE CEDAR BEARS S15"W 7.0 FT. (TAPE AND COMPASS). WE TAG AND SCRIBE BT.  
 CORNER LIES 0.5 FT. WEST OF EXISTING FENCE CORNER POST, FENCE LINES RUNNING SOUTH AND EAST, 0.2 FT ABOVE GROUND LEVEL. WE PLACE 5 1/2 FT. U-POST 1.0 FT. NORTH.
- 10) PROPERTY CORNER  
 SET 5/8" X 40" IRON ROD WITH YELLOW PLASTIC CAP MARKED LONE ROCK TIMBER LS 2291  
 -- 16" INCENSE CEDAR BEARS N26"E 21.5 FT (TAPE AND COMPASS). WE TAG AND SCRIBE BT.  
 CORNER LIES AT ANGLE POINT OF NORTH AND SOUTHWEST RUNNING EXISTING FENCE LINES 6 FT. WEST OF CENTER OF SMALL CREEK 0.2 FT. ABOVE GROUND LEVEL. WE PLACE 5 1/2 FT. U-POST 1.0 FT. NORTH.
- 11) PROPERTY CORNER  
 SET 5/8" X 40" IRON ROD WITH YELLOW PLASTIC CAP MARKED LONE ROCK TIMBER LS 2291  
 -- 18" INCENSE CEDAR BEARS N 11"W 7.9 FT. (TAPE AND COMPASS). WE TAG AND SCRIBE BT.  
 CORNER LIES AT ANGLE POINT OF NORTHEAST AND WEST RUNNING EXISTING FENCE LINES, 0.3 FT. ABOVE GROUND LEVEL. WE PLACE 5 1/2 FT. U-POST 1.0 FT. NORTH.
- 12) PROPERTY CORNER  
 SET 5/8" X 40" IRON ROD WITH YELLOW PLASTIC CAP MARKED LONE ROCK TIMBER LS 2291  
 -- 14" INCENSE CEDAR BEARS N 66"E 5.95 FT. (TAPE AND COMPASS). WE TAG AND SCRIBE BT.  
 CORNER LIES IN EAST-WEST RUNNING EXISTING FENCE LINE 0.3 FT ABOVE GROUND LEVEL. WE PLACE 5 1/2 FT. U-POST 1.0 FT. NORTH.
- 13) PROPERTY CORNER  
 SET 5/8" X 40" IRON ROD WITH YELLOW PLASTIC CAP MARKED LONE ROCK TIMBER LS 2291  
 -- 11" OREGON WHITE OAK BEARS N 61"E 8.92 FT. (TAPE AND COMPASS). WE TAG AND SCRIBE BT.  
 CORNER LIES IN EAST-WEST RUNNING EXISTING FENCE LINE 0.3 FT ABOVE GROUND LEVEL. WE PLACE 5 1/2 FT. U-POST 1.0 FT. NORTH.
- 14) PROPERTY CORNER  
 SET 5/8" X 40" IRON ROD WITH YELLOW PLASTIC CAP MARKED LONE ROCK TIMBER LS 2291  
 -- 6"x8" RAILROAD TIE FENCE CORNER POST BEARS N88"E 45.0 FT. WE TAG.  
 CORNER LIES IN EAST-WEST RUNNING EXISTING FENCE LINE 0.1 FT. ABOVE GROUND LEVEL ON NORTH-SOUTH CENTERLINE OF SECTION 28.

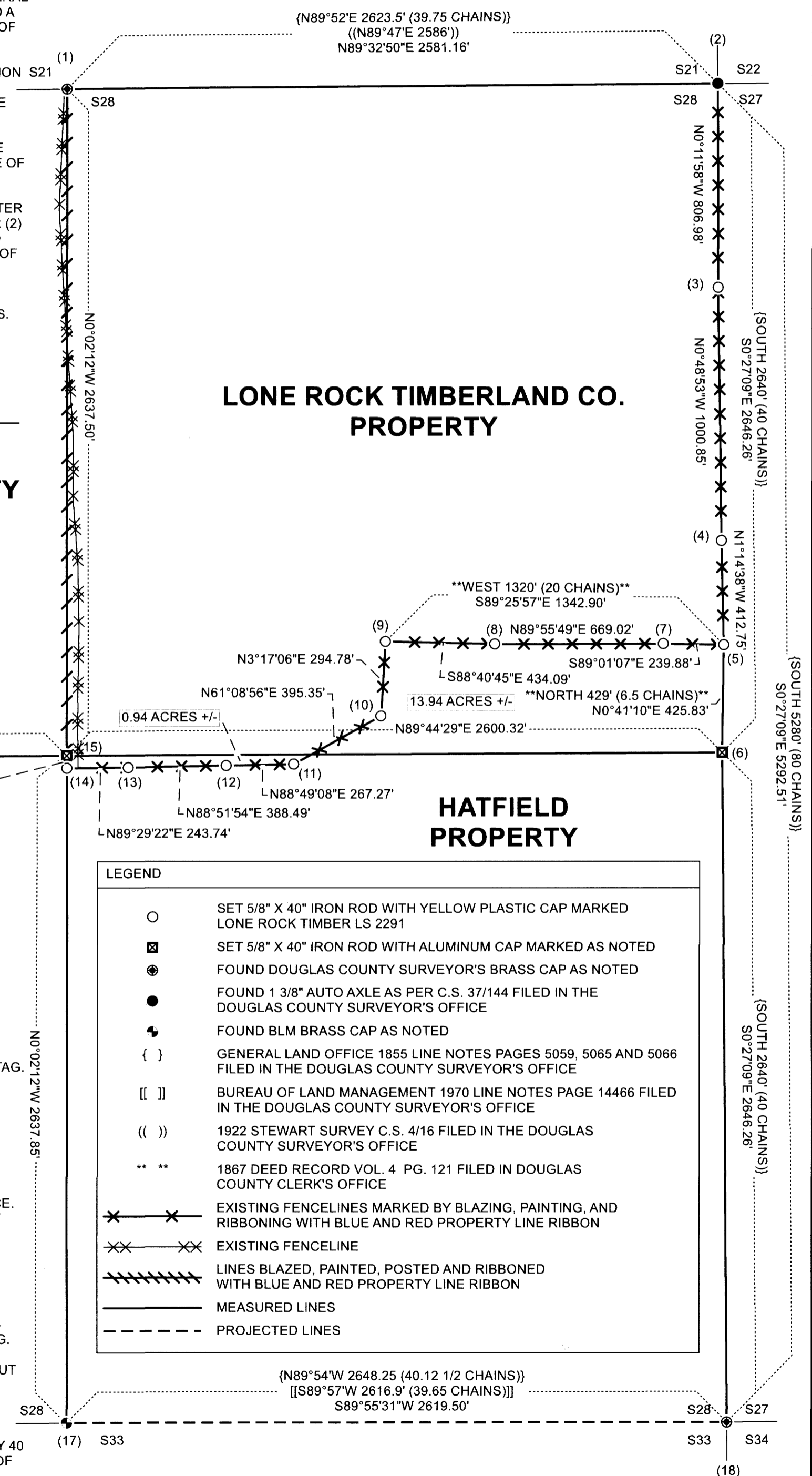
## NARRATIVE

THE PURPOSE OF THIS SURVEY IS TO ESTABLISH PROPERTY CORNER MONUMENTS FOR TIMBER MANAGEMENT PURPOSES. WE FOUND AND REFERENCED EXISTING LONG-STANDING FENCE LINES WHICH HAVE BEEN MANAGED TO AND USED FOR PROPERTY BOUNDARIES IN EXCESS OF 50 YEARS, IN PREPARATION FOR A BOUNDARY CLARIFICATION AGREEMENT, BETWEEN LONE ROCK TIMBERLAND CO. AND D&B HATFIELD FAMILY LLC. WE RAN A RANDOM CLOSED LOOP SURVEY AROUND THE NORTHEAST QUARTER OF SECTION 28, TOWNSHIP 27 SOUTH, RANGE 4 WEST. WE ALSO RAN CLOSED LOOP TRAVERSES FROM OUR CLOSED LOOP AROUND THE NORTHEAST QUARTER TO THE SOUTHEAST SECTION CORNER (18), THE SOUTH QUARTER CORNER (17) AND THE WEST QUARTER CORNER (16) IN ORDER TO SEARCH FOR THE EAST QUARTER CORNER AND PROPERLY SUBDIVIDE THE SECTION. THE ORIGINAL SURVEY OF SECTION 28 WAS CONDUCTED BY THE GENERAL LAND OFFICE IN 1855. AT THAT TIME THE EXTERIOR CORNERS OF SECTION 28 WERE ESTABLISHED. A SUBSEQUENT SURVEY BY THE GLO IN 1860, TO ESTABLISH BOUNDARIES OF DONATION LAND CLAIMS IN THE AREA, REVISITED SEVERAL OF THE EXISTING QUARTER CORNERS OF SECTION 28. IN 1867, DEED VOLUME 4 PAGE 121 SEVERED A PARCEL 6.5 CHAINS BY 20 CHAINS FROM THE SOUTHEAST QUARTER OF THE NORTHEAST QUARTER OF SECTION 28 USING THE THEN EXISTING EAST QUARTER CORNER. IN 1963 THE DOUGLAS COUNTY SURVEYOR'S OFFICE MADE A SEARCH FOR THE EAST QUARTER CORNER OF SECTION 28 AND WERE UNABLE TO LOCATE THE CORNER OR ITS ACCESSORY BEARING TREES. WE WORKED IN CONJUNCTION S21 WITH COUNTY SURVEYOR'S OFFICE TO AGAIN MAKE A DILIGENT SEARCH FOR THE EAST QUARTER CORNER AND FOUND WHAT APPEARS TO BE A PREVIOUSLY OPENED OAK TREE AT THE APPROXIMATE LOCATION OF THE EASTERLY BEARING TREE FOR THE EAST QUARTER CORNER. WE SEARCHED THE AREA AND FOUND NO EVIDENCE OF THE NORTHERLY BEARING TREE. AFTER OUR INITIAL FIELD FINDINGS, WE WORKED WITH THE COUNTY SURVEYOR'S FIELD CREW, TO REOPEN THE FACE OF THE SUSPECTED EASTERLY WHITE OAK BEARING TREE AND WERE ALSO UNABLE TO FIND ANY EVIDENCE OF THIS TREE BEING THE ORIGINAL BEARING TREE. WE CUT A CORE FROM THE SUSPECTED TREE AND FOUND IT TO BE OF INSUFFICIENT AGE TO HAVE EXISTED AT THE TIME OF THE ORIGINAL 1855 GLO SURVEY. THEREFORE, AFTER CONSULTING WITH THE COUNTY SURVEYOR WE SET THE EAST QUARTER CORNER OF SECTION 28 (6) AT PROPER PROPORTION BETWEEN THE NORTHEAST SECTION CORNER (2) AND SOUTHEAST SECTION CORNER (18). USING OUR PROPORTIONED EAST QUARTER CORNER AND EXISTING NORTH, SOUTH AND WEST QUARTER CORNERS WE PROPERLY COMPUTED THE POSITION OF THE CENTER QUARTER OF SECTION 28 BY INTERSECTION FROM THE FOUND QUARTER CORNER MONUMENTS FOR SECTION 28 AND SET AS SHOWN. DURING THE COURSE OF OUR SURVEY WE ESTABLISHED MONUMENTS 3 THROUGH 14 TO REFERENCE THE EXISTING LONG-STANDING FENCE LINES WHICH DELINEATE THE AREA OF LONG USE AND MANAGEMENT BY THE NEIGHBORING PARTIES. WE ESTABLISHED A GPS BASELINE IN THE NORTHEAST QUARTER OF SECTION 28 AND ROTATED BEARINGS TO TRUE NORTH. THIS SURVEY WAS CONDUCTED USING A TOPCON ES65 TOTAL STATION AND TRIMBLE GEO XH 6000 GPS UNITS WITH DANIEL SAILY, GARY ANGIOLET, KATIE NICHOLS AND IGNACIO ROMAN ASSISTING ME.

## BOUNDARY LINE CLARIFICATION AGREEMENT RECORDING # 2020-003641



- 15) CENTER QUARTER CORNER OF SECTION 28 GCDB 340240  
 SET 5/8" X 40" IRON ROD WITH ALUMINUM CAP MARKED LONE ROCK TIMBER T27S R4W S28 C1/4 2019 PLS 2291.  
 -- 22" INCENSE CEDAR BEARS S24 3/4"E 26.4 FT. WE TAG AND SCRIBE C1/4 S28 BT.  
 -- 28" INCENSE CEDAR BEARS S48 1/2"W 37.4 FT. WE TAG AND SCRIBE C1/4 S28 BT.  
 -- 12" INCENSE CEDAR BEARS N62 1/2"W 35.5 FT. WE TAG AND SCRIBE C1/4 S28 BT.  
 -- 15" DOUGLAS-FIR BEARS N55 1/2"E 41.6 FT. WE TAG AND SCRIBE C1/4 S28 BT.  
 -- 5/8" IRON ROD WITH YELLOW PLASTIC CAP MARKED LONE ROCK TIMBER LS 2291 (CORNER 14 ON MAP) BEARS S0°02'12"E 49.62 FT.  
 CORNER LIES ON GENTLE SOUTH SLOPE IN MIXED CONIFER AND HARDWOOD APPROXIMATELY 2 FT SOUTHWEST OF LARGE ROTTEN CEDAR STUMP 0.3 FT ABOVE GROUND LEVEL. WE PLACE 5 1/2 FT STEEL U-POST 1.0 FT NORTH.
- 16) QUARTER CORNER BETWEEN SECTIONS 28 AND 29 GCDB 300240  
 FOUND 1970 BLM BRASS CAP MARKED T27S R4W 1/4 S29 | S28  
 -- 18" DOUGLAS-FIR BEARS N 20 3/4"W 18.8 FT. (RECORD N 23 1/2"W 19.14 FT.) HEALED FACE AND TAG.  
 -- 20" DOUGLAS-FIR BEARS N 74"E 22.9 FT. (RECORD N70 1/4 "E 21.78 FT.) HEALED FACE AND TAG.  
 -- 10" DOUGLAS-FIR BEARS S 26 1/2"W 22.9 FT. WE SCRIBE T27S R4W S29 1/4 BT AND TAG.  
 -- 28" DOUGLAS-FIR BEARS S 26 1/4"E 55.9 FT. WE SCRIBE T27S R4W S28 1/4 BT AND TAG.  
 CORNER LIES ON EAST SLOPE IN HEAVY TIMBER APPROXIMATELY 30 FT EAST OF RIDGE TOP IN OLD DOWN FENCE LINE 5.5 FT NORTHWEST OF FENCE CORNER POST 0.2 FT ABOVE GROUND LEVEL.
- 17) QUARTER CORNER BETWEEN SECTIONS 28 AND 33 GCDB 340200  
 FOUND 1970 BLM BRASS CAP MARKED T27S R4W 1/4 S28 | S33  
 -- 10" PACIFIC MADRONE BEARS S 63"E 17.8 FT. (RECORD S62 1/2"E 19.0 FT.) TAG AND HEALED FACE.  
 -- 17" PACIFIC MADRONE BEARS N 20 1/4"E 5.2 FT. (RECORD N 27 1/2"E 5.0 FT.) TAG AND PARTIALLY VISIBLE SCRIBE "1/4".  
 -- 32" DOUGLAS-FIR FOUND AT RECORD N4"E 34.0 FT. HEALED FACE AND TAG.  
 CORNER LIES ON WEST SLOPE IN OPEN TIMBER AND GRASS APPROXIMATELY 100 FT EAST OF DIRT ROAD IN OLD DOWN FENCE LINE 0.3 FT ABOVE GROUND LEVEL
- 18) SECTION CORNER OF SECTIONS 27, 28, 33 AND 34 GCDB 400200  
 FOUND 1959 DOUGLAS COUNTY SURVEYOR'S BRASS CAP MARKED T27S R4W S28 | S27 | S33 | S34  
 -- 24" WESTERN RED CEDAR BEARS S 54"W 8.4 FT. (RECORD S54"W 8.5 FT.) HEALED FACE AND TAG.  
 -- 12" PACIFIC YEW BEARS N 43 1/2"W 19.2 FT. (RECORD N42"W 18.3 FT.) HEALED FACE AND TAG.  
 -- 20" CEDAR SNAG (ORIGINAL BT) BEARS N 85 1/4"E 11.3 FT. (RECORD N84"E 11.9 FT.) CHOPPED OUT FACE AND TAG  
 -- 18" WESTERN RED CEDAR BEARS S 12 1/2"E 33.5 FT. (RECORD S12"E 33.4 FT.) HEALED FACE AND TAG.  
 -- 4" PACIFIC YEW SNAG FOUND AT RECORD N11"E 23.4 FT. ROTTED FACE AND TAG.  
 CORNER LIES ON NORTH SLOPE ON NORTH EDGE OF SMALL FLAT IN HEAVY TIMBER APPROXIMATELY 40 FT WEST OF SOUTH FORK OF DEER CREEK, 0.8 FT ABOVE GROUND LEVEL. CORNER IS IN A MOUND OF STONES.



LEGEND	
○	SET 5/8" X 40" IRON ROD WITH YELLOW PLASTIC CAP MARKED LONE ROCK TIMBER LS 2291
⊠	SET 5/8" X 40" IRON ROD WITH ALUMINUM CAP MARKED AS NOTED
⊙	FOUND DOUGLAS COUNTY SURVEYOR'S BRASS CAP AS NOTED
●	FOUND 1 3/8" AUTO AXLE AS PER C.S. 37/144 FILED IN THE DOUGLAS COUNTY SURVEYOR'S OFFICE
⚡	FOUND BLM BRASS CAP AS NOTED
{ }	GENERAL LAND OFFICE 1855 LINE NOTES PAGES 5059, 5065 AND 5066 FILED IN THE DOUGLAS COUNTY SURVEYOR'S OFFICE
[ [ ] ]	BUREAU OF LAND MANAGEMENT 1970 LINE NOTES PAGE 14466 FILED IN THE DOUGLAS COUNTY SURVEYOR'S OFFICE
( ( ) )	1922 STEWART SURVEY C.S. 4/16 FILED IN THE DOUGLAS COUNTY SURVEYOR'S OFFICE
** **	1867 DEED RECORD VOL. 4 PG. 121 FILED IN DOUGLAS COUNTY CLERK'S OFFICE
— x — x —	EXISTING FENCE LINES MARKED BY BLAZING, PAINTING, AND RIBBONING WITH BLUE AND RED PROPERTY LINE RIBBON
— x x — x x —	EXISTING FENCELINE
	LINES BLAZED, PAINTED, POSTED AND RIBBONED WITH BLUE AND RED PROPERTY LINE RIBBON
— — — —	MEASURED LINES
- - - - -	PROJECTED LINES

FILED  
 DATE: 2-18-2020 BY: [Signature]  
 THIS SURVEY CONSISTS OF:  
 MAP: M176-45  
 NARRATIVE:  
 CORNER RPT:  
 DOUGLAS COUNTY SURVEYOR

MAP FILE M176-45

MAP FILE M176-45