

PROPERTY SURVEY LOCATED IN THE NW1/4 AND THE NE1/4 OF SECTION 13,
TOWNSHIP 21 SOUTH, RANGE 12 WEST, W.M., DOUGLAS COUNTY, OREGON.

SURVEY FOR: RAYONIER
PACIFIC RESOURCE UNIT
2990 BROADWAY, NORTH BEND, OR 97459

SURVEY BY: ESTABROOK LAND SURVEYING, INC.
PO BOX 574, LAKESIDE, OR 97449

FILED
Date: 9-3-19 By: *JLE*
This survey consists of:
Map: M176-3
Narrative: _____
Corner Rpt: _____
DOUGLAS COUNTY
SURVEYOR

MAP FILE M176-3

SECTION CORNER, SECTIONS 11, 12, 13 & 14
FOUND MONUMENT:
A 2" IRON PIPE WITH 2 1/2" BRASS CAP MARKED
"T21S R12W 11 12 13 14 PLS497 1979", PER M79-30.
FOUND BT'S:
A 27" FIR STUMP WITH HEALED FACE BEARS N27°30'E 49.3'.
A 22" FIR STUMP WITH HEALED FACE BEARS S34°45'E 13.7'.
AN ORIGINAL 52" FIR STUMP BEARS S15°E 23.8'.
AN ORIGINAL 48" FIR STUMP BEARS S17°W 26.4'.
A 26" FIR, WITH HEALED FACE BEARS S51°30'W 27.0'.
A 21" FIR STUMP WITH HEALED FACE BEARS N66°W 9.6'.
AN ORIGINAL 50" FIR STUMP BEARS N16°45'W 73.0' (N16°45'W) CS#58/140-3.
NEW BT MARKED:
AN 11" FIR, FACE SCRIBED "SE S11 BT" WITH X-CHOP AND TAG
BEARS N22°W 8.0' TO A SPIKE AT SIDE CENTER.
LAT. AND LONG. PER GARMIN ETREX HAND HELD GPS
N: 43°45'16.8" W: 124°05'06.4"

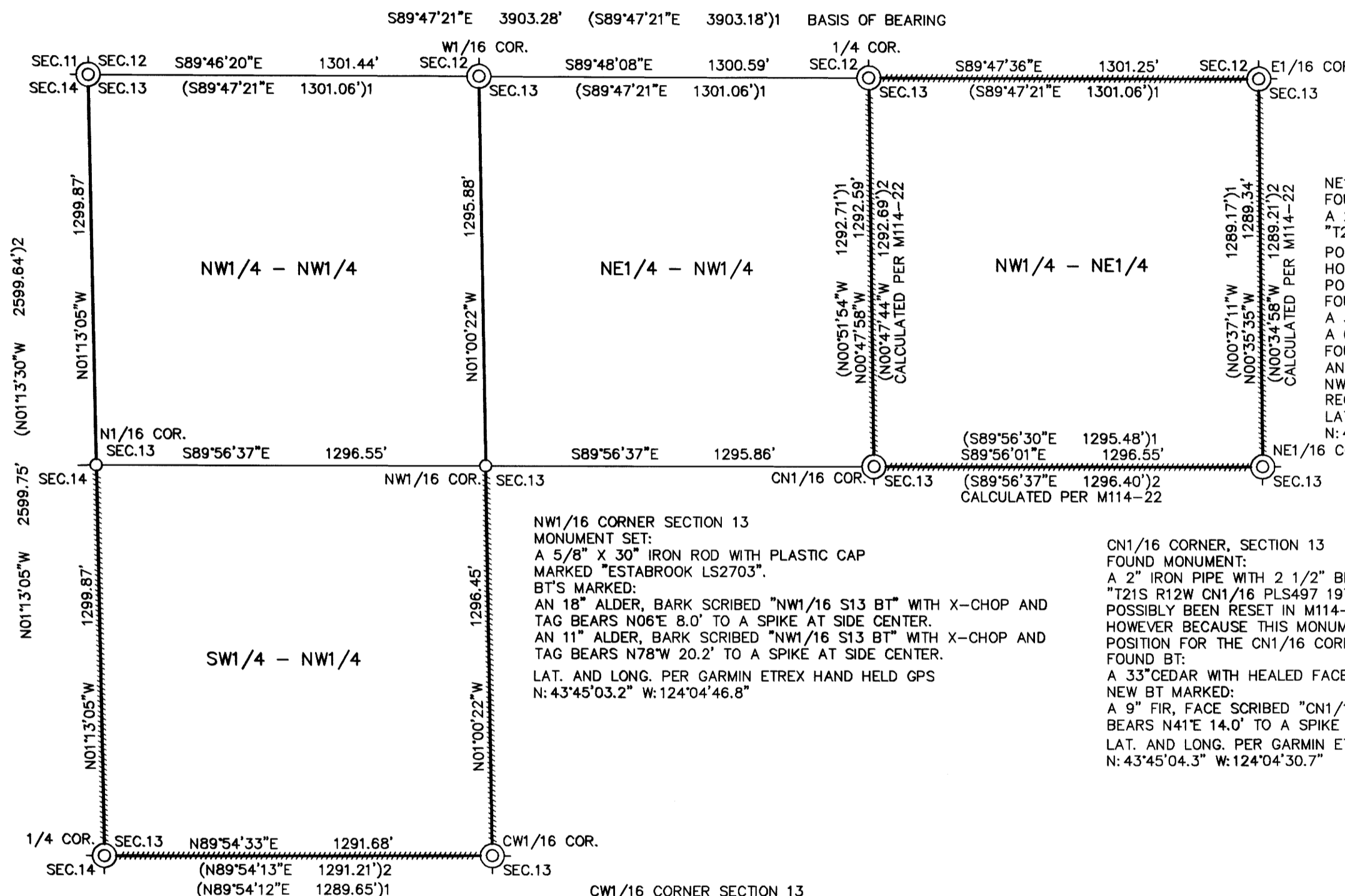
W1/16 CORNER SECTIONS 12 & 13
FOUND MONUMENT:
A 2" IRON PIPE WITH 2 1/2" BRASS CAP MARKED
"T21S R12W W1/16 12 13 PLS497 1979", PER M79-30.
FOUND BT'S:
A ROTTEN HEMLOCK STUMP WITH VISIBLE SCRIBE AND TAG
BEARS S52°E 12.6' RECORD 14.4'.
A ROTTEN FIR STUMP WITH VISIBLE SCRIBE BEARS N72°W 14.7'.
NEW BT'S MARKED:
A 10" FIR, FACE SCRIBED "W1/16 S13 BT" WITH X-CHOP AND TAG
BEARS S25°W 7.6' TO A SPIKE AT SIDE CENTER.
A 10" FIR, FACE SCRIBED "W1/16 S12 BT" WITH X-CHOP AND TAG
BEARS N62°W 5.3' TO A SPIKE AT SIDE CENTER.
LAT. AND LONG. PER GARMIN ETREX HAND HELD GPS
N: 43°45'17.0" W: 124°04'48.7"

1/4 CORNER, SECTIONS 12 & 13
FOUND MONUMENT:
A 2" IRON PIPE WITH 2 1/2" BRASS CAP MARKED
"T21S R12W 1/4 12 13 PLS497 1979" PER M79-30.
FOUND BT'S:
A 16" FIR STUMP WITH HEALED FACE AND TAG BEARS N33°45'E 10.1'.
A ROTTEN ALDER STUMP WITH TAG BEARS S22°15'E 17.6'.
NEW BT'S MARKED:
A 16" ALDER, BARK SCRIBED "N1/4 S13 BT" WITH X-CHOP AND TAG
BEARS S21°W 17.25' TO A SPIKE AT SIDE CENTER.
A 17" ALDER, BARK SCRIBED "S1/4 S12 BT" WITH X-CHOP AND TAG
BEARS N65°W 18.2' TO A SPIKE AT SIDE CENTER.
LAT. AND LONG. PER GARMIN ETREX HAND HELD GPS
N: 43°45'16.7" W: 124°04'31.3"

E1/16 CORNER, SECTIONS 12 & 13
FOUND MONUMENT:
A 2" IRON PIPE WITH 2 1/2" BRASS CAP MARKED
"T21S R12W E1/16 12 13 PLS497 1979" PER M79-30.
FOUND BT'S:
A 56" FIR STUMP WITH HEALED FACE AND TAG BEARS S08°E 21.9'.
A 24" ALDER WITH HEALED FACE AND TAG BEARS N13°30'W 11.4'.
NEW BT MARKED:
A 14" CASCARA, BARK SCRIBED "E1/16 S13 BT" WITH X-CHOP AND TAG
BEARS S50°W 21.8' TO A SPIKE AT SIDE CENTER.
LAT. AND LONG. PER GARMIN ETREX HAND HELD GPS
N: 43°45'16.9" W: 124°04'13.1"

N1/16 CORNER SECTIONS 13 & 14
MONUMENT SET:
A 5/8" X 30" IRON ROD WITH PLASTIC CAP
MARKED "ESTABROOK LS2703".
BT'S MARKED:
A 10" FIR, FACE SCRIBED "N1/16 S13 BT" WITH X-CHOP AND TAG
BEARS N04°E 15.5' TO A SPIKE AT SIDE CENTER.
AN 11" ALDER, BARK SCRIBED "N1/16 S13 BT" WITH X-CHOP AND
TAG BEARS S51°E 32.9' TO A SPIKE AT SIDE CENTER.
LAT. AND LONG. PER GARMIN ETREX HAND HELD GPS
N: 43°45'03.9" W: 124°05'05.8"

1/4 CORNER SECTIONS 13 & 14
FOUND MONUMENT:
A 2" IRON PIPE WITH BRASS CAP MARKED
"T21S R12W 1/4 S13 S14 PLS497 1979", PER M114-22.
FOUND BT:
AN 18" HEMLOCK STUMP BEARS N69°30'E 25.9'.
NEW BT'S MARKED:
A 10" FIR, FACE SCRIBED "E1/4 S14 BT" WITH X-CHOP AND TAG
BEARS S20°W 9.9' TO A SPIKE AT SIDE CENTER.
A 9" FIR, FACE SCRIBED "E1/4 S14 BT" WITH X-CHOP AND TAG
BEARS N68°W 2.5' TO A SPIKE AT SIDE CENTER.
LAT. AND LONG. PER GARMIN ETREX HAND HELD GPS
N: 43°44'51.6" W: 124°05'05.7"



NW1/16 CORNER SECTION 13
MONUMENT SET:
A 5/8" X 30" IRON ROD WITH PLASTIC CAP
MARKED "ESTABROOK LS2703".
BT'S MARKED:
AN 18" ALDER, BARK SCRIBED "NW1/16 S13 BT" WITH X-CHOP AND
TAG BEARS N06°E 8.0' TO A SPIKE AT SIDE CENTER.
AN 11" ALDER, BARK SCRIBED "NW1/16 S13 BT" WITH X-CHOP AND
TAG BEARS N78°W 20.2' TO A SPIKE AT SIDE CENTER.
LAT. AND LONG. PER GARMIN ETREX HAND HELD GPS
N: 43°45'03.2" W: 124°04'46.8"

CN1/16 CORNER, SECTION 13
FOUND MONUMENT:
A 2" IRON PIPE WITH 2 1/2" BRASS CAP MARKED
"T21S R12W CN1/16 PLS497 1979" ORIGINALLY SET IN M79-30, MAY HAVE
POSSIBLY BEEN RESET IN M114-22, BUT THERE IS NO RECORD OF IT BEING RESET.
HOWEVER BECAUSE THIS MONUMENT HAS BEEN USED FOR A LONG TIME, I HELD ITS
POSITION FOR THE CN1/16 CORNER OF SECTION 13.
FOUND BT:
A 33" CEDAR WITH HEALED FACE BEARS S16°30'W 14.3'.
NEW BT MARKED:
A 9" FIR, FACE SCRIBED "CN1/16 S13 BT" WITH X-CHOP AND TAG
BEARS N41°E 14.0' TO A SPIKE AT SIDE CENTER.
LAT. AND LONG. PER GARMIN ETREX HAND HELD GPS
N: 43°45'04.3" W: 124°04'30.7"

CW1/16 CORNER SECTION 13
FOUND MONUMENT:
A 2" IRON PIPE WITH 2 1/2" BRASS CAP MARKED
"T21S R12W CW1/16 S13 PLS497 1979" APPARENTLY RESET IN M114-22.
FOUND BT'S:
A 44" TWIN FIR HEALED FACE BEARS S74°E 42.3'
RECORD S70°30'E 36.1' CS#58/140-3
A 60" CEDAR STUMP BEARS S20°W 80.5'
RECORD S23°W 81.1' TO FACE CS#58/140-3
NEW BT'S MARKED:
A 12" HEMLOCK, FACE SCRIBED "CW1/16 S13 BT" WITH X-CHOP AND TAG
BEARS N25°E 5.85' TO A SPIKE AT SIDE CENTER.
A 17" FIR, FACE SCRIBED "CW1/16 S13 BT" WITH X-CHOP AND TAG
BEARS S75°W 8.4' TO A SPIKE AT SIDE CENTER.
LAT. AND LONG. PER GARMIN ETREX HAND HELD GPS
N: 43°44'52.0" W: 124°04'47.7"

NARRATIVE

THE PURPOSE OF THIS SURVEY WAS TO MARK BOUNDARY LINES FOR RESOURCE MANAGEMENT.
THE PROCEDURE WAS AS FOLLOWS: THE SOUTHEASTERLY PORTION OF THE NE1/4 OF SECTION 13 WAS SURVEYED ON JUNE 17, 1970,
BY JAMES W. BYRON, CS#54/110-2. A BOUNDARY AGREEMENT WAS THEN SIGNED ON AUGUST 8, 1970 BY THE ADJACENT LAND OWNERS,
DOUGLAS COUNTY DEED RECORDS BOOK 454 PAGE 99. SINCE NO PORTION OF THE NW1/4 OF THE NE1/4 SECTION 13 OVER LAPS THE
BOUNDARY AGREEMENT LINE IT IS NOT AFFECTED BY SAID AGREEMENT. THE AGREEMENT SPECIFICALLY CALLS OUT ADJACENT COMMON
BOUNDARIES. THERE IS NO AGREEMENT THAT THE NORTHWEST CORNER OF THE AGREEMENT LINE WOULD BE HELD FOR SUBDIVISION OF THE SECTION.
THEREFORE IN RICHARD J. HINTZ SURVEY DATED MARCH 1980, M79-30 HE SUBDIVIDED THE SECTION AND MARKED THE BOUNDARIES OF THE
NW1/4 OF THE NE1/4 FOR THAT LOGGING ROTATION. IN RICHARD J. HINTZ SURVEY DATED DECEMBER 1991, M114-22 HE ACKNOWLEDGES THAT
THE SECTION CORNER COMMON TO SECTIONS 13, 14, 23 & 24 WAS PROPORTIONED INCORRECTLY DURING HIS SURVEY M79-30. HE DOESN'T SAY
ANYTHING ABOUT RESETTING THE MONUMENTS FOR THE CW1/16 CORNER, CN1/16 CORNER OR THE NE1/16 CORNER OF SECTION 13. HOWEVER
AFTER TYING THE FOUND MONUMENTS AS SHOWN HEREON AND USING THE FOUND MONUMENT ON THE NORTH BOUNDARY OF THE SECTION TO
CALCULATE A SUBDIVISION OF SECTION 13 PER M114-22, THE FOUND MONUMENTS ARE IN THE CORRECT POSITION PER M114-22. I THEREFORE
HELD THE FOUND MONUMENTS AND MARKED THE BOUNDARIES AS SHOWN HEREON.
EQUIPMENT USED WAS A NIKON DTM-522 TOTAL STATION WITH TDS RANGER DATA COLLECTOR.
ASSISTING PERSONNEL WERE PAT COY, CHRIS FALKOSKE AND TRAVIS NORTHRUP.

NOTE: WGS84 LATITUDE AND LONGITUDE ARE PER GARMIN ETREX HAND HELD GPS.
THESE POSITIONS ARE NOT SURVEY GRADE AND SHOULD NOT BE USED TO ESTABLISH
BOUNDARIES, BUT ARE PROVIDED TO ASSIST IN RESOURCE MANAGEMENT.

LEGEND

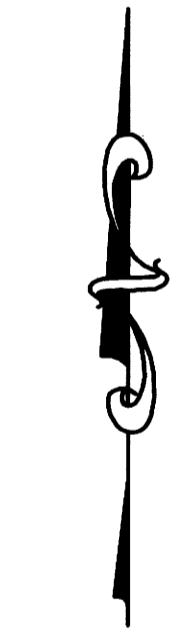
- ⊙ FOUND MONUMENT AS NOTED
- SET MONUMENT AS NOTED
- BOUNDARY LINE MARKED WITH ORANGE FLAGGING,
ORANGE BLAZES AND STEEL POST.
- ()1 RECORD PER M79-30
- ()2 RECORD PER M114-22

BASIS OF BEARING

BASIS OF BEARING IS SOLAR OBSERVATION PER M79-30.

RECORD REFERENCE INFORMATION

M79-30, BY RICHARD J. HINTZ, DATED MARCH 1980.
M114-22, BY RICHARD J. HINTZ, DATED DEC. 1991.
CS#54/110-2, BY JAMES W. BYRON, DATED JUNE 17, 1970.
BOUNDARY AGREEMENT, RECORDED IN DOUGLAS COUNTY DEEDS
BOOK 454 PAGE 99.



SCALE 1" = 400'

REGISTERED
PROFESSIONAL
LAND SURVEYOR

James Lee Estabrook

OREGON
JUNE 30, 1995
JERRY LEE ESTABROOK
2703

EXPIRES 12/31/19

DRAWN BY:	JLE	DATE:	7/23/19
CHECKED BY:	TJE	DRAWING NO.:	HUDSON13
JOB NO.:	2019-10	SHEET	1 OF 1

MAP FILE M176-3