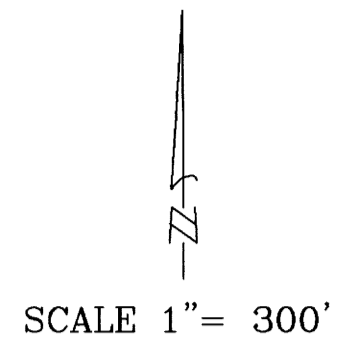


BOUNDARY SURVEY IN
 NORTHEAST 1/4 & NORTHWEST 1/4 OF SECTION 33, T21S, R4W, W.M.
 DOUGLAS COUNTY, OREGON
 MAY 15, 2019

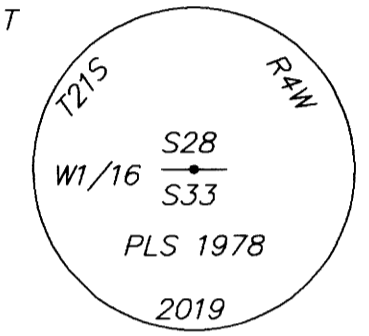
FILED
 Date: 8-28-19 By: DJ
 This survey consists of:
 Map: M176-1
 Narrative:
 Corner Rpt:
 DOUGLAS COUNTY
 SURVEYOR

MAP FILE M176-1



③ 1/4 CORNER 28 & 33 T21S, R4W, WM
 FOUND: 5/8" IRON ROD PER M82-14 AND M84-75 (T21S, R4W 340200)
 35" FIR, N71°E, 20.6' TO CENTER (RECORD N71°E, 20.4')-M132-12
 (RECORD N71°E, 70.7' PER M82-14
 28" FIR, S45°W, 7.6' (RECORD S44°W, 7.9'-M82-14 BEARING TREE
 MARKED: 11" FIR, S46°E, 43.4' TO NAIL SIDE/CENTER-SCRIBED "1/4S33 BT"
 7" GRAND FIR, N27°W, 10.3' TO NAIL SIDE/CENTER-SCRIBED "1/4S28 BT"

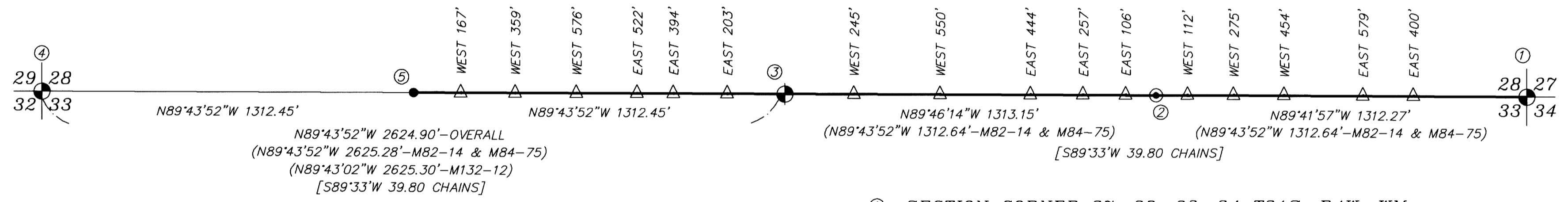
④ SECTION CORNER 28, 29, 32, 33 T21S, R4W, WM
 FOUND: 2 1/2" DOUGLAS COUNTY BRASS CAP "1964" (T21S, R4W 300200)
 27" FIR STUMP, N79°E, 34.4' TO CENTER (RECORD N79°E, 34.3')-CS FILE 65/69-65 BEARING TREE
 13" FIR SNAG, N85°E, 33.6' TO CENTER (RECORD N85°E, 33.7')-1964 DOUGLAS COUNTY BEARING TREE
 19" FIR STUMP, S54°E, 23.8' TO CENTER (RECORD S55°E, 23.5)-1964 DOUGLAS COUNTY BEARING TREE
 11" FIR STUMP, S42°W, 32.9' TO CENTER (RECORD S42 1/2°W, 32.6')-M132-12 BEARING TREE
 19" FIR STUMP, N89°W, 36.5' TO CENTER (RECORD N89°E, 35.8')-M132-12 BEARING TREE
 NOTE: NO TREES TO NORTH OF CORNER-RECENT CLEARCUT



-NARRATIVE-

THIS SURVEY WAS MADE IN APRIL, 2019 BY DANIEL W. BAKER OF BAKER AND ASSOCIATES SURVEYORS, INC. FOR SENECA JONES TIMBER COMPANY IN THE NORTHEAST 1/4 AND THE NORTHWEST 1/4 OF SECTION 33, TOWNSHIP 21 SOUTH, RANGE 4 WEST, WILLAMETTE MERIDIAN. THE PURPOSE OF THIS SURVEY WAS TO LOCATE AND MARK IN THE FIELD THE SECTION LINE (NORTH PROPERTY LINE) COMMON TO SECTIONS 28 AND 33, TOWNSHIP 21 SOUTH, RANGE 4 WEST, WILLAMETTE MERIDIAN FROM THE NORTHEAST SECTION CORNER OF SECTION 33 TO THE WEST 1/16 CORNER COMMON TO SECTIONS 28 AND 33. THE BASIS OF BEARING FOR THIS SURVEY WAS THE WEST 1/2 OF THE SECTION LINE COMMON TO SECTIONS 28 AND 33 PER M82-14. THE NORTHEAST SECTION CORNER OF SECTION 33 IS A 1958 DOUGLAS COUNTY BRASS CAP (ORIGINAL POSITION PER ORIGINAL BEARING TREE). THE NORTHWEST SECTION CORNER IS A 1964 DOUGLAS COUNTY BRASS CAP (ORIGINAL CORNER POSITION FROM ORIGINAL POST HOLE). THE NORTH 1/4 CORNER AND EAST 1/16 CORNER COMMON TO SECTIONS 28 AND 33 WERE SET IN M82-14 AT PROPORTIONATE POSITION. WE MARKED THE TRUE PROPERTY LINE BETWEEN THE EAST 1/16 CORNER TO THE WEST 1/16 CORNER COMMON TO SECTIONS 28 AND 33 BY BLAZING TREES ON EITHER SIDE OF THE TRUE LINE (BLAZES PAINTED RED) AND BY SETTING 5 FOOT METAL POSTS AT RANDOM INTERVALS ALONG THE TRUE LINE. WE MARKED THE TRUE PROPERTY LINE BETWEEN THE EAST 1/16 CORNER COMMON TO SECTIONS 28 AND 33 AND THE NORTHEAST SECTION CORNER BY BLAZING TREES ON THE SENECA SIDE OF THE TRUE LINE (BLAZES PAINTED RED) AND BY SETTING 5 FOOT METAL POSTS AT RANDOM INTERVALS ALONG THE TRUE LINE. TREES ON THE NORTH SIDE OF THIS PROPERTY LINE WERE NOT BLAZED BUT WERE PAINTED RED ONLY. THE WEST 1/16 CORNER WAS ESTABLISHED AT MIDPOINT BETWEEN THE NORTH 1/4 CORNER AND THE NORTHWEST SECTION CORNER. THIS POSITION WAS MONUMENTED WITH A 5/8" X 36" REBAR AND A 2 1/2" ALUMINUM CAP, MARKED AS SHOWN.

⑤ WEST 1/16 CORNER 28 & 33 T21S, R4W, WM
 SET: 5/8" X 36" REBAR WITH 2 1/2" ALUMINUM CAP (MARKED AS SHOWN)
 MARKED: 9" FIR, N32°E, 7.5' TO NAIL SIDE/CENTER-SCRIBED "W1/16S28 BT"
 12" FIR, S54°W, 2.5' TO NAIL SIDE/CENTER-SCRIBED "W1/16S33 BT"



BASIS OF BEARING PER M82-14

① SECTION CORNER 27, 28, 33, 34 T21S, R4W, WM
 FOUND: 2 1/2" DOUGLAS COUNTY BRASS CAP "1958" (T21S, R4W 400200)
 17" FIR STUMP, N62°E, 27.0' TO CENTER (RECORD N64°E, 27.1)-1961 WEYERHAEUSER BEARING TREE
 11" FIR, N69°E, 20.9' TO CENTER (RECORD N70°E, 20.8)-1958 DOUGLAS COUNTY BEARING TREE
 12" HEMLOCK, S77°E, 21.0' TO CENTER (RECORD S76 3/4°E, 21.0)-2008 BLM BEARING TREE
 12" ROTTEN FIR STUMP, S48°E, 54.8' TO CENTER (RECORD S48°E, 54.5)-1958 DOUGLAS COUNTY BEARING TREE
 34" FIR, S70°W, 7.6' TO CENTER (RECORD S70°W, 7.3)-1958 DOUGLAS COUNTY BEARING TREE
 15" FIR STUMP, N63°W, 28.4' TO CENTER (RECORD N63°W, 28.0)-1958 DOUGLAS COUNTY BEARING TREE
 38" FIR STUMP, N44°W, 15.0' TO CENTER (RECORD N40°W, 20 LKS.)-ORIGINAL BEARING TREE

BASIS OF BEARING: WEST 1/2 OF NORTH LINE OF SECTION 33, T21S, R4W, WM PER M82-14

LEGEND

- ⊕ - FOUND - GOVERNMENT CORNER POSITION (AS NOTED)
EITHER BLM BRASS CAP OR DOUGLAS COUNTY BRASS CAP
- ⊙ - FOUND - PRIVATE SURVEY CORNER PER M84-75 (AS NOTED)
- - SET - 5/8" X 36" REBAR WITH 2 1/2" ALUMINUM CAP
MARKED AS SHOWN
- △ - 5 FOOT METAL POSTS SET ON PROPERTY LINE
(DISTANCES AND CARDINAL DIRECTION ARE FROM THE NEAREST CORNER I.E. = SOUTH 123')
- - BLAZED AND PAINTED PROPERTY LINE
- [] - RECORD DATA 1855 GLO SURVEY
- () - RECORD DATA PER SURVEY, AS NOTED

② EAST 1/16 CORNER 28 & 33 T21S, R4W, WM
 FOUND: 5/8" IRON ROD PER M82-14 AND M84-75
 18" FIR SNAG, S4°W, 21.1' TO CENTER (SAME AS RECORD) -M82-14 BEARING TREE
 12" DOWNED FIR, N78°W, 7.2' TO ROOT HOLE (SAME AS RECORD)-M82-14 BEARING TREE
 MARKED: 15" FIR, S60°E, 26.7' TO NAIL SIDE/CENTER-SCRIBED "E1/16S33 BT"
 27" FIR, S73°W, 39.8' TO NAIL SIDE/CENTER-SCRIBED "E1/16S33 BT"
 NOTE: NO TREES TO NORTH OF CORNER-RECENT CLEARCUT

REGISTERED PROFESSIONAL LAND SURVEYOR
 DANIEL W. BAKER
 1978

EXPIRES 12/31/19

I CERTIFY THAT THIS MAP WAS PREPARED USING A HP51645A INK CARTRIDGE ON JPC-4M2 DOUBLE MATTE FILM

BOUNDARY SURVEY IN NE 1/4 AND NW 1/4 OF SECTION 33, T21S, R4W, W.M. DOUGLAS COUNTY, OREGON	
CLIENT:	SENECA JONES TIMBER COMPANY
DRAWN BY:	DWB BAKER AND ASSOCIATES, SURVEYORS
DATE:	5/15/19 1347 MARKET STREET
FILE:	SENECA-210433 SPRINGFIELD, OREGON (541) 343-7243

MAP FILE M176-1