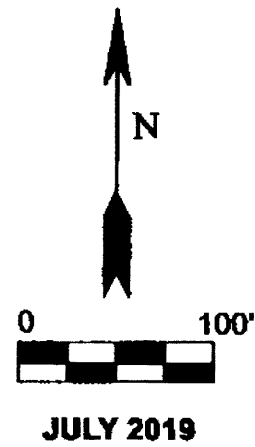


A BOUNDARY LINE ADJUSTMENT SURVEY FOR RUDI & CARLA BOOHER

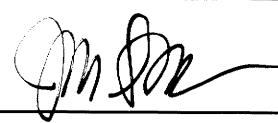
LOCATED IN THE NORTHEAST 1/4 OF SECTION 9, TOWNSHIP 28 SOUTH,
RANGE 7 WEST, WILLAMETTE MERIDIAN, DOUGLAS COUNTY, OREGON

**BASIS OF BEARING PER
PARTITION PLAT 2018-0004**
MONUMENT "A" TO MONUMENT "B"
N88°25'52"W 33.81'
(N88°25'52"W 33.81')



APPROVALS:

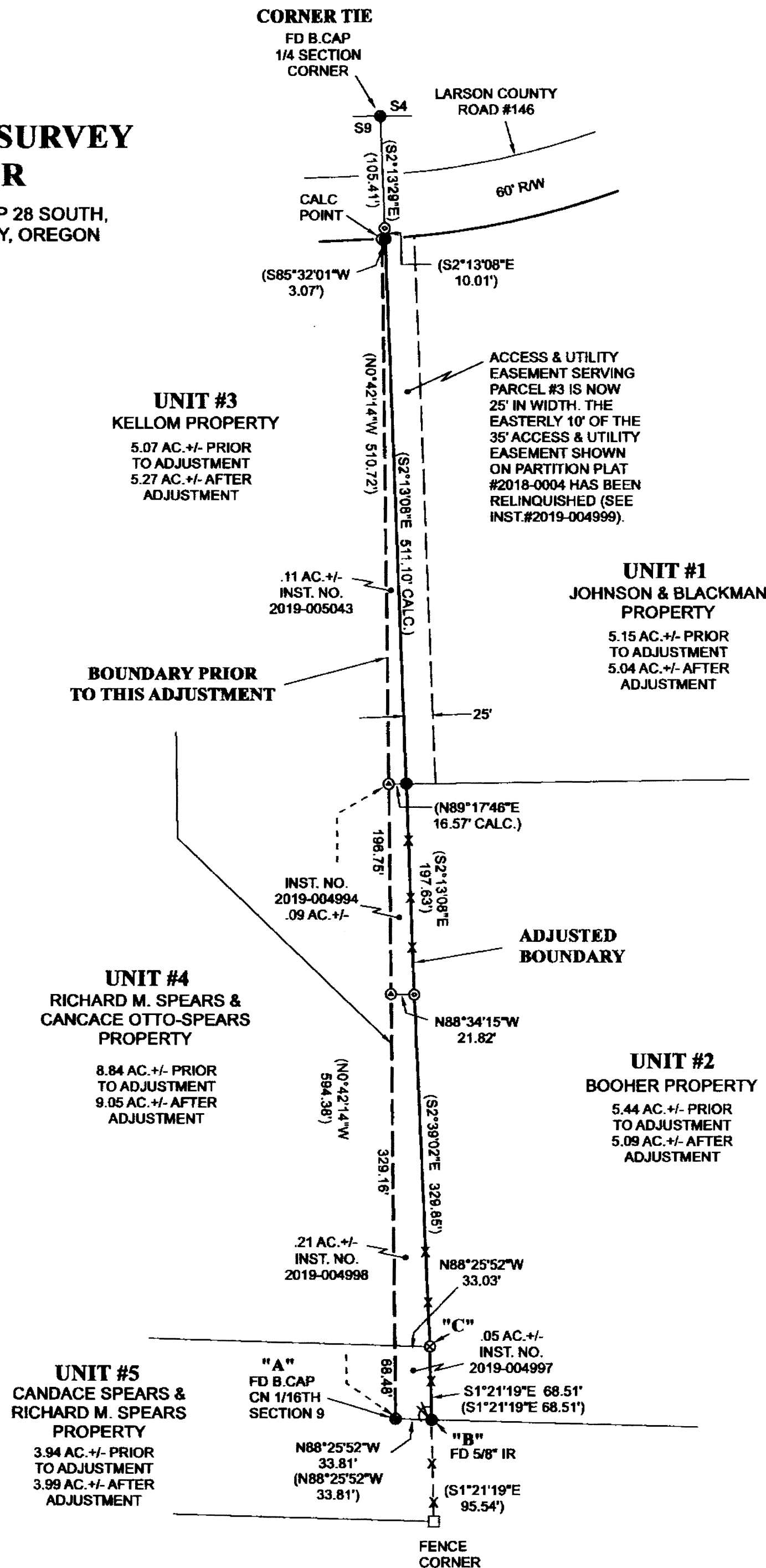
CLERK RECORDING NUMBERS FOR THE BLA INST.# 2019-004994,
INST.#2019-004997, INST.#2019-004998, & INST.#2019-005043

 8/26/19
DOUGLAS COUNTY PLANNING DIRECTOR SIGNATURE DATE

PLANNING DEPARTMENT FILE NO. M19-015

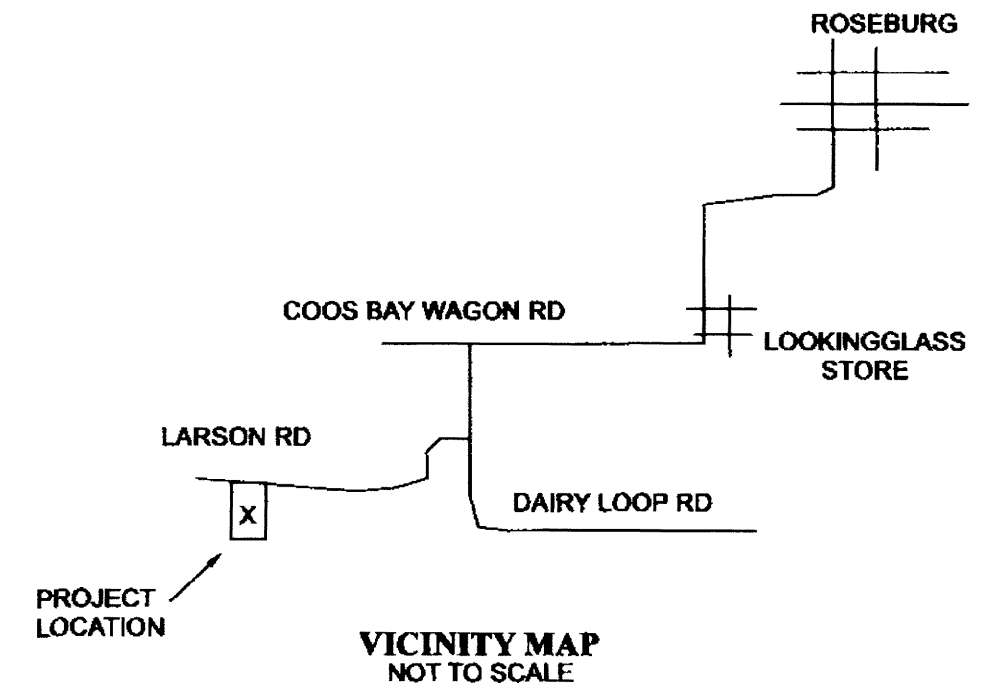
LEGEND

- ⊙ RECORD LOCATION OF 1/2" IRON PIPE PER PARTITION PLAT #2018-0004
- RECORD LOCATION OF 5/8" IRON ROD PER PARTITION PLAT #2018-0004 UNLESS NOTED OTHERWISE
- ⊙ CALCULATED POSITION PER PARTITION PLAT 2018-0004
- FENCE CORNER
- RECORD LOCATION OF BRASS CAP PER PARTITION PLAT #2018-0004 UNLESS NOTED OTHERWISE
- () RECORD PER PARTITION PLAT 2018-0004
- ⊙ SET 5/8" X 30" IR WITH PLASTIC CAP MARKED "LAND SURVEYING"



FILED
Date: 8-27-19 By: GL
This survey consists of:
Map: M175-77
Narrative: _____
Corner Rpt: _____

DOUGLAS COUNTY
SURVEYOR



NARRATIVE

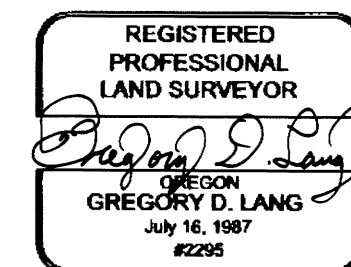
THIS SURVEY IS FOR A PROPERTY LINE ADJUSTMENT.
MONUMENTS LABELED AS "A" & "B" WERE FOUND. MONUMENT "C" WAS SET PER DATA FROM PARTITION PLAT #2018-0004. IT WAS SET USING A RECORD ANGLE FROM LINE A-B AND RECORD DISTANCE FROM MONUMENT "B". NO OTHER MONUMENTS WERE FIELD LOCATED. THEIR POSITIONS ARE PER RECORD (P.P.2018-0004). THE LEGAL DESCRIPTIONS FOR THE TRANSFER OF OWNERSHIP HAVE BEEN FILED WITH THE COUNTY CLERK. THE DOCUMENT NUMBERS ARE SHOWN HEREON.

SURVEY & COMPS: G.LANG
EQUIP: NIKON DTM 420

NOTE:

PARCEL #1 WAS UNSURVEYED ON PARTITION PLAT 2018-0004. PARCELS #2 & #3 WERE SURVEYED.

SURVEYED BY
GREGORY D. LANG
7500 WILLIS CR RD
WINSTON, OR 97496



MAP FILE M175-77

MAP FILE M175-77