

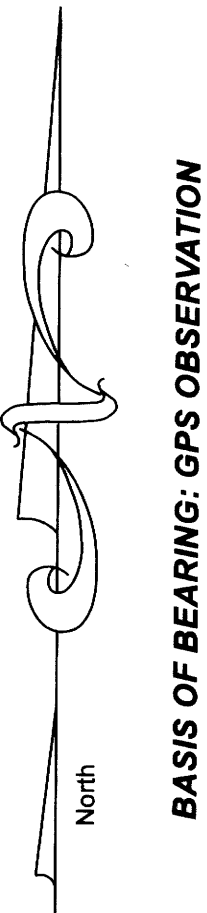
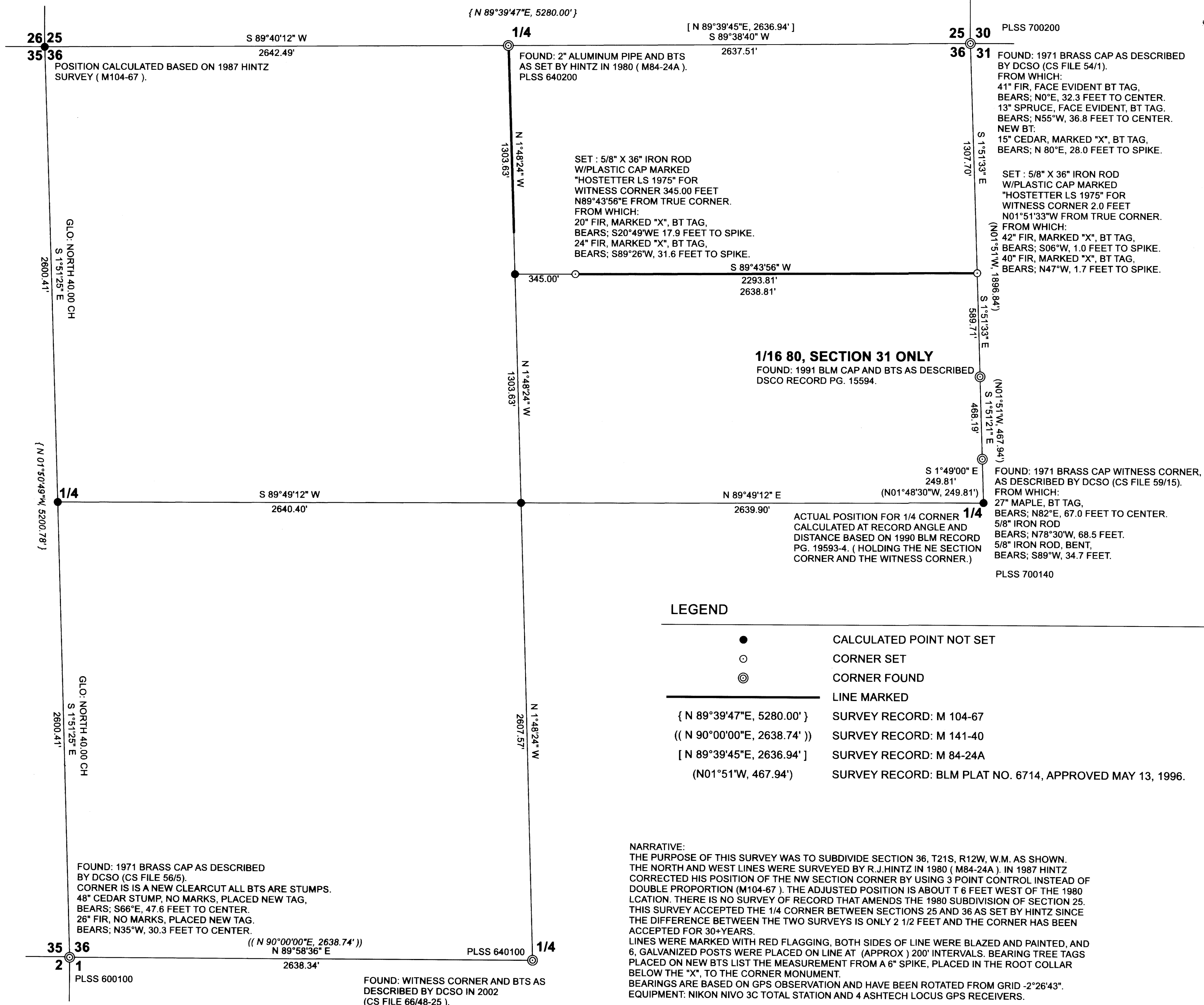
**PROPERTY SURVEY  
SECTION 36, T21S, R12W, W.M.  
DOUGLAS COUNTY, OREGON  
FEBRUARY 2019**

**SURVEY BY:  
HOSTETTER LAND SURVEYING  
63538 PINTAIL DR.  
COOS BAY, OREGON 97420**

SURVEY FOR:  
ROME CREEK TIMBER  
P.O. BOX 1088  
ROSEBURG, OREGON 97470

FILED  
Date: 4-15-2019 By: [Signature]  
This survey consists of:  
Map: M175-35  
Narrative:  
Corner Rpt:

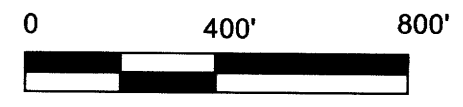
**DOUGLAS COUNTY  
SURVEYOR**



**LEGEND**

●	CALCULATED POINT NOT SET
○	CORNER SET
⊙	CORNER FOUND
—	LINE MARKED
{ N 89°39'47"E, 5280.00' }	SURVEY RECORD: M 104-67
{ ( N 90°00'00"E, 2638.74' ) }	SURVEY RECORD: M 141-40
[ N 89°39'45"E, 2636.94' ]	SURVEY RECORD: M 84-24A
(N01°51'W, 467.94')	SURVEY RECORD: BLM PLAT NO. 6714, APPROVED MAY 13, 1996.

**NARRATIVE:**  
THE PURPOSE OF THIS SURVEY WAS TO SUBDIVIDE SECTION 36, T21S, R12W, W.M. AS SHOWN. THE NORTH AND WEST LINES WERE SURVEYED BY R.J.HINTZ IN 1980 ( M84-24A ). IN 1987 HINTZ CORRECTED HIS POSITION OF THE NW SECTION CORNER BY USING 3 POINT CONTROL INSTEAD OF DOUBLE PROPORTION (M104-67 ). THE ADJUSTED POSITION IS ABOUT T 6 FEET WEST OF THE 1980 LOCATION. THERE IS NO SURVEY OF RECORD THAT AMENDS THE 1980 SUBDIVISION OF SECTION 25. THIS SURVEY ACCEPTED THE 1/4 CORNER BETWEEN SECTIONS 25 AND 36 AS SET BY HINTZ SINCE THE DIFFERENCE BETWEEN THE TWO SURVEYS IS ONLY 2 1/2 FEET AND THE CORNER HAS BEEN ACCEPTED FOR 30+YEARS.  
LINES WERE MARKED WITH RED FLAGGING, BOTH SIDES OF LINE WERE BLAZED AND PAINTED, AND 6, GALVANIZED POSTS WERE PLACED ON LINE AT (APPROX ) 200' INTERVALS. BEARING TREE TAGS PLACED ON NEW BTS LIST THE MEASUREMENT FROM A 6" SPIKE, PLACED IN THE ROOT COLLAR BELOW THE "X", TO THE CORNER MONUMENT.  
BEARINGS ARE BASED ON GPS OBSERVATION AND HAVE BEEN ROTATED FROM GRID -2°26'43". EQUIPMENT: NIKON NIVO 3C TOTAL STATION AND 4 ASHTECH LOCUS GPS RECEIVERS.



REGISTERED  
PROFESSIONAL  
LAND SURVEYOR  
[Signature]  
OREGON  
TONY HOSTETTER  
January 19, 1982  
LICENSE #1975  
EXPIRES: 6/30/19

MAP FILE M175-35

MAP FILE M175-35