

SURVEY FOR: JUNIPER PROPERTIES LIMITED PARTNERSHIP
 P. O. BOX 1127 ROSEBURG, OR. 97470
 SURVEY BY: LONE ROCK TIMBER MANAGEMENT CO.
 P. O. BOX 1127 ROSEBURG, OR. 97470
 S1/2 OF THE S1/2 OF SECTION 36 T. 32 S. R. 6 W. W. M. DOUGLAS CO. OR.
 DATE: SEPTEMBER 2018 TRACT: M32-6W-36

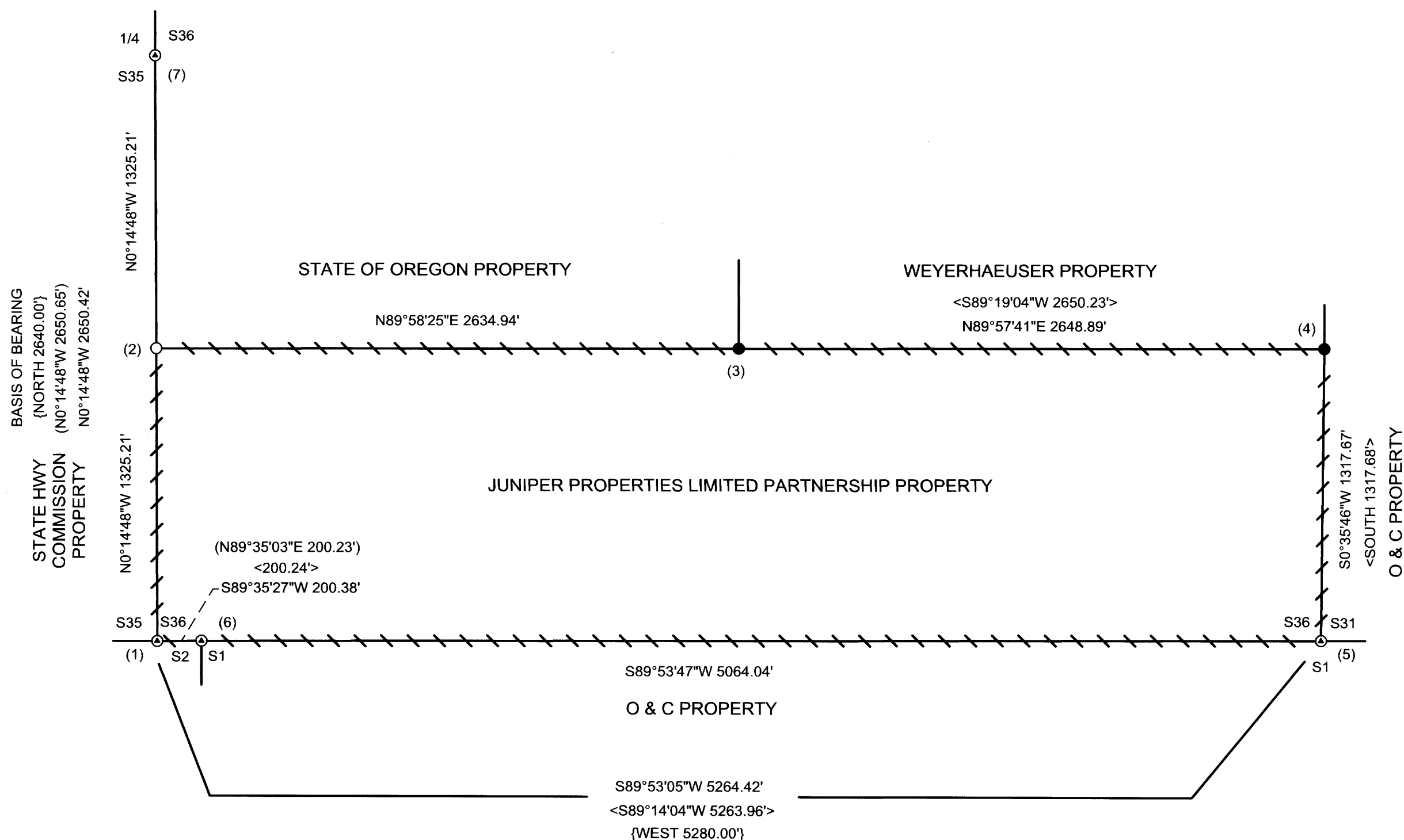
FILED:
 DATE: 11-13-18 *RK*
 THIS SURVEY CONSISTS OF MAP
 M174-78
 NARRATIVE: _____
 CORNER RPT: _____
 DOUGLAS COUNTY SURVEYOR

NARRATIVE:

THE PURPOSE OF THIS SURVEY IS TO MARK PROPERTY LINES FOR TIMBER MANAGEMENT PURPOSES. WE CONDUCTED THIS SURVEY BY RUNNING CLOSED LOOP TRAVERSES WITH A TOTAL STATION AROUND THE BOUNDARY OF THE S1/2 S1/2 OF SECTION 36 DEPICTED ON THIS MAP. WE ALSO RAN A CLOSED LOOP TRAVERSE ALONG THE WEST LINE OF SECTION 36 TO THE WEST 1/4 OF SECTION 36. WE USED FOR CONTROL ON THE SOUTH BOUNDARY OF SECTION 36 THREE BLM MONUMENTS (1) (5) (6) WHICH WERE ESTABLISHED FROM ORIGINAL AND PERPETUATED ORIGINAL EVIDENCE BY BLM RESURVEYS IN 1989 AND 2006. THE WEST QUARTER OF SECTION 36 (7) WE USED FOR CONTROL IS A BLM CAP ESTABLISHED BY PROPORTION IN A BLM 2006 RESURVEY. THE CENTER SOUTH 1/16 (3) FOR SECTION 36 AND SOUTH 1/16 (4) BETWEEN SECTIONS 36 AND 31 WAS ESTABLISHED PROPERLY BY BENTZ PER MAP M110-48. WE ESTABLISHED THE SOUTH 1/16 BETWEEN SECTIONS 35 AND 36 AT PROPORTIONATE DISTANCE BETWEEN THE FOUND BLM MONUMENTS AS SHOWN ON THIS MAP. THE JUNIPER PROPERTY BOUNDARY LINES, AS SHOWN ON THE PLAT, WERE MARKED WITH BLUE AND RED PROPERTY LINE RIBBON. TREES ALONG THE BOUNDARY LINE WERE BLAZED AND PAINTED WITH FLUORESCENT RED PAINT. METAL U-POSTS WERE PLACED ON LINE AT ROAD CROSSING AND LRT ALUMINUM PROPERTY LINE TAGS WERE INSTALLED ON TREES NEAR THE PROPERTY LINE. BEARING TREES ARE BLAZED AND SCRIBED AT THE ROOT CROWN WITH DISTANCES MEASURED TO A NAIL AT THE SIDE CENTER OF THE TREE. THE BLAZED FACES OF THE BEARING TREES ARE PAINTED FLUORESCENT RED AND A LRT BEARING TREE TAG IS NAILED TO THE TREE. THIS SURVEY WAS DONE WITH A TOPCON ES65 TOTAL STATION WITH GARY ANGIOLET, DAN SAILY, IGNACIO ROMAN, AND WESTON ADDINGTON ASSISTING ME.

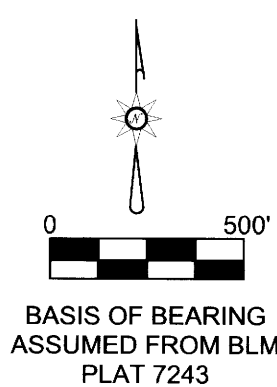
CORNER INFORMATION:

- 1) THE CORNER OF SECTIONS 35 & 36 ON THE SOUTH BOUNDARY OF T.32 S. R. 6 W. GCDB 600100
 FOUND 2006 BLM BRASS CAP 0.3 FEET ABOVE GROUND
 -- 54" DOUGLAS FIR BEARS N57 1/4"W 9.1 FEET (RECORD N57 3/4"W 9.2 FEET) HEALED FACE AND TAG
 -- 28" DOUGLAS FIR BEARS N82 1/2"E 37.9 FEET (RECORD N82 1/4"E 37.9 FEET) HEALED FACE AND TAG
 -- 37" DOUGLAS FIR BEARS N36"W 33.9 FEET (RECORD N35 1/2"W 34.0 FEET) HEALED FACE AND TAG
 CORNER LIES ON STEEP NORTH FACING SLOPE APPROX. 125 FEET SOUTH OF SMALL DRAW.
 AN ORANGE CARSONITE POST IS APPROX. 2.0 FEET SOUTH OF CORNER.
- 2) THE SOUTH 1/16TH CORNER BETWEEN SECTIONS 35 & 36 GCDB 600120
 SET A 5/8" X 40" IRON ROD WITH 2 1/2" ALUMINUM CAP MARKED LONE ROCK TIMBER S1/16 S35 I S36 2018 PLS 2291
 -- AN UNRECORDED 5/8" IRON ROD BEARS S59°51'E 4.39 FEET (CALCULATED FROM BLM RECORD S60°24'46"W 4.41 FEET
 WE BELIEVE SCRIBNER ERROR AND CALCULATED SHOULD BE S60°31'57"E 4.42 FEET) 4" X 4" ROTTED OFF POST
 NEXT TO IRON ROD
 -- 32" DOUGLAS FIR BEARS S72 1/2"W 13.3 FEET WE SCRIBE S1/16 S35 BT AND TAG TREE
 -- 28" WHITE FIR BEARS S83 1/4"E 59.2 FEET WE SCRIBE S1/16 S36 BT AND TAG TREE
 CORNER LIES IN SMALL DEPRESSION PUT METAL U-POST APPROX 1.0 FEET EAST OF CORNER
- 3) THE CENTERSOUTH 1/16TH CORNER FOR SECTION 35 GCDB 640120
 FOUND 5/8" IRON ROD WITH YELLOW PLASTIC CAP MARKED BENTZ SUR INC
 -- 14" DOUGLAS FIR BEARS N11 1/2"E 4.5 FEET TREE HAS A WELL HEALED UPPER FACE WE SCRIBE BT IN NEW
 LOWER FACE AND TAG TREE
 -- 12" DOUGLAS FIR BEARS S19 3/4"W 7.7 FEET TREE HAS A WELL HEALED UPPER FACE, WE SCRIBE IN NEW
 LOWER FACE AND TAG TREE
 CORNER LIES ON STEEP EAST FACING SLOPE. PUT A METAL U-POST APPROX. 1.0 FEET WEST OF CORNER.
- 4) THE SOUTH 1/16TH CORNER BETWEEN SECTIONS 31 & 36 GCDB 700120
 FOUND 5/8" IRON ROD WITH YELLOW PLASTIC CAP MARKED BENTZ SUR INC PER MAP M110-48
 -- 6" TAN OAK BEARS N76 1/4"W 16.3 FEET HEALED FACE AND BT TAG
 -- 15" DOUGLAS FIR BEARS N34 3/4"E 31.1 FEET WE SCRIBE S1/16 S31 BT AND TAG TREE
 CORNER LIES ON STEEP WEST FACING SLOPE APPROX. 75 FEET WEST OF ROCK ROAD 33-5-6.0.
 PUT METAL U-POST APPROX. 1.0 FEET SOUTH OF CORNER
- 5) THE SOUTHEAST CORNER OF SECTION 36 T32S R6W AND THE SOUTHWEST CORNER OF SECTION 31 T32S R5W GCDB 700100
 FOUND A 1989 BLM BRASS CAP
 -- 24" MADRONE BEARS N12°E 8.0 FEET (RECORD N15°E 7.92 FEET) NO VISIBLE MARKS AND BT TAG
 -- 48" DOUGLAS FIR BEARS N4 1/2°E 41.6 FEET (RECORD N7°E 42.24 FEET) HEALED FACE AND BT TAG
 -- 23" DOUGLAS FIR BEARS N6 1/4"W 15.1 FEET (RECORD N5"W 15.18 FEET) HEALED FACE AND BT TAG
 CORNER LIES ON SPUR RIDGE THAT RUNS NORTHERLY FROM CORNER.
- 6) THE NORTHWEST CORNER OF SECTION 1 T33S R6W GCDB 603100
 FOUND 2006 BLM BRASS CAP
 -- 17" DOUGLAS FIR BEARS S78 3/4"E 21.7 FEET (RECORD S78 3/4"E 22.2 FEET) HEALED FACE AND BT TAG
 -- 19" MAPLE BEARS S10 1/4"W 56.1 FEET RECORD BEARING AND DISTANCE ROOT WAD PREVENTED
 US FROM MEASURING TO MAPLE
 CORNER LIES ON SOUTH EDGE OF OLD SKID ROAD. A CARSONITE POST BEARS SOUTHWEST 0.7 FEET.
- 7) THE QUARTER CORNER BETWEEN SECTIONS 35 & 36 GCDB 600140
 FOUND 2006 BLM CAP
 -- 8" PINE BEARS S89°E 67.5 FEET AS PER RECORD HEALED FACE AND BT TAG
 -- 10" CEDAR BEARS S74°W 71.55 FEET (RECORD S74°W 71.5 FEET) HEALED FACE AND BT TAG
 CORNER LIES IN MIDDLE OF CUT SLOPE OF SECOND BENCH IN THE CUT SLOPE FOR THE
 NORTH BOUND LANES OF INTERSTATE 5



LEGEND	
⊙	FOUND BLM BRASS CAPS
●	FOUND BENTZ IRON RODS WITH PLASTIC CAPS
○	SET 5/8" X 40" IRON ROD WITH 2 1/2" ALUMINUM CAP
< >	RECORD FROM BENTZ MAP M110-48
()	RECORD FROM BLM PLAT 7243
{ }	GLO FIELD NOTES PAGES 8640 & 8645
	LINE BLAZED, PAINTED, TAGGED, AND RIBBONED
---	PROJECTED LINES

REGISTERED
 PROFESSIONAL
 LAND SURVEYOR
Ken W. Hoffine
 OREGON
 JULY 16, 1987
 KEN W. HOFFINE
 2291
 EXPIRES: 6/30/2019



FILE M174-78

FILE M174-78