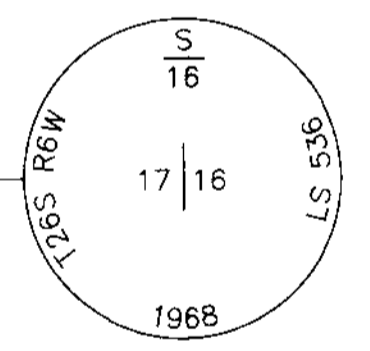
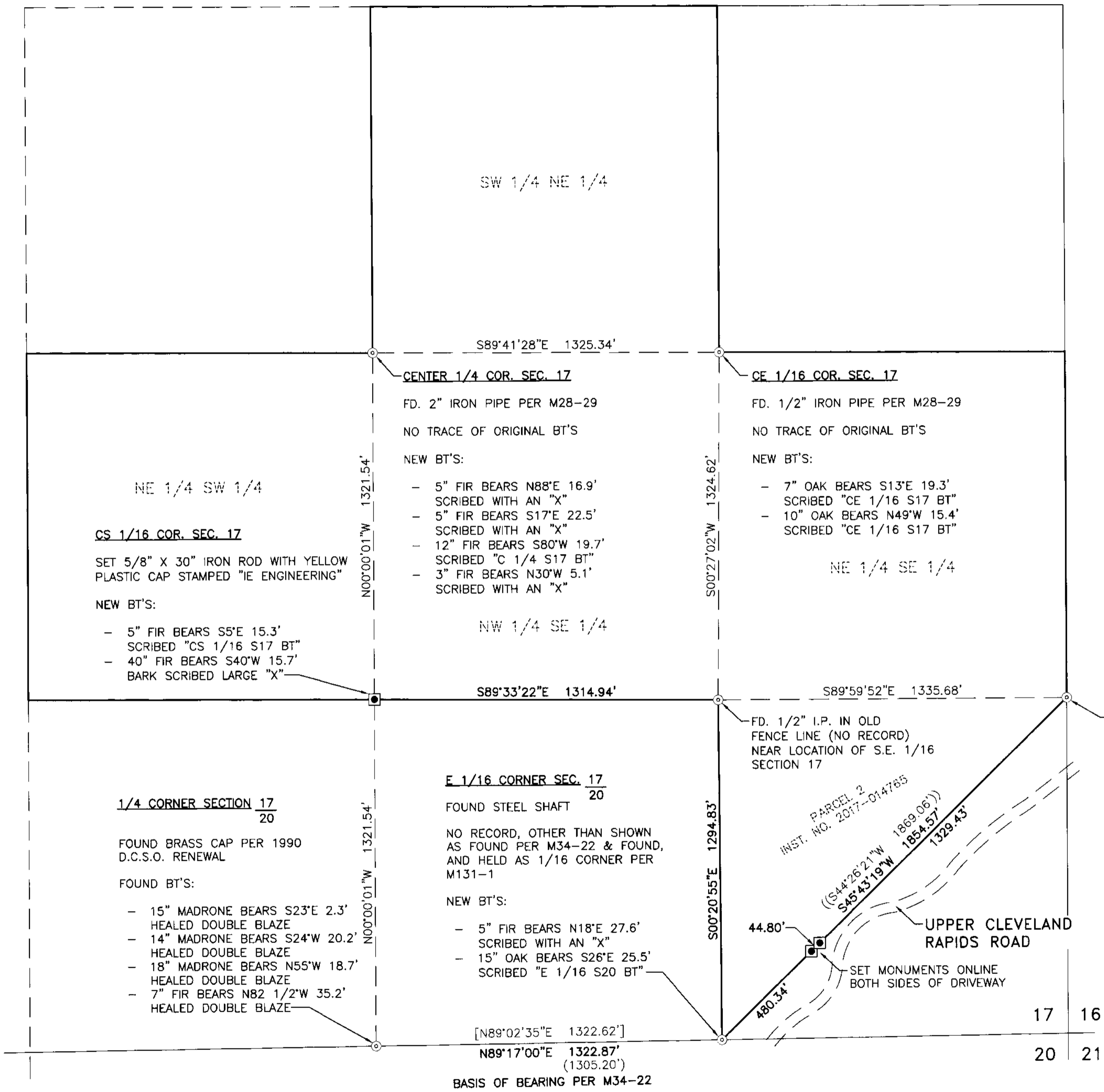


MAP FILE M174-62

NARRATIVE:

THE PURPOSE OF THIS MAP IS TO HAVE A PERMANENT RECORD OF SURVEY ON FILE FOR OUR CLIENT. THE ORIGINAL PURPOSE OF THIS SURVEY WAS TO MARK THE SOUTH LINE OF THE TRACT (SOUTH LINE OF THE NW 1/4 OF THE SE 1/4 AND THE SOUTH LINE OF THE NE 1/4 OF THE SW 1/4). DUE TO LOST CORNERS ON THE WEST LINE OF SECTION 17 AND THE COST TO RE-ESTABLISH THEM, OUR CLIENT WAS FORCED TO STOP WORK AND REQUESTED A PERMANENT MAP TO BE FILED. WE DID NOT MARK ANY PROPERTY LINES. WE DID, HOWEVER SET THE CENTER-SOUTH 1/16 CORNER PER THE 2009 B.L.M. MANUAL OF INSTRUCTIONS AS SHOWN. WE ALSO SET MONUMENTS ON LINE BETWEEN THE SOUTH 1/16 CORNER OF SECTIONS 16 & 17 AND THE EAST 1/16 CORNER OF SECTIONS 17 & 20. THERE ARE NO CORNER NOTES ON FILE FOR EITHER OF THESE CORNERS. THE BRASS CAP AT THE SOUTH 1/16 CORNER OF SECTION 16 & 17 WAS SET PER M35-61. I FIND NO RECORD OF THE MONUMENT AT THE EAST 1/16 CORNER BETWEEN SECTIONS 17 & 20 BEING SET. IT WAS TIED AND SHOWN AS A 1/16 SECTION CORNER PER M34-22 & FOUND, TIED AND HELD AS THE 1/16 CORNER PER M131-1. IT WAS ALSO CALLED OUT AS A PROPERTY CORNER IN THE DEED (INSTRUMENT NUMBER 2017-14765). CONSIDERING ALL OF THESE FACTORS AND THE COUNTY ASSESSOR'S MAP SHOWING THE PROPERTY LINE SPLITTING THIS FRACTIONAL PORTION INTO 20.00 ACRES, I CONCLUDE THAT THESE MONUMENTS WERE SET WITH THE INTENTION OF MARKING 1/16 CORNERS. WE ALSO FOUND AND TIED A 1/2" IRON PIPE NEAR THE LOCATION OF THE SOUTHEAST 1/16 CORNER OF SECTION 17. I DID NOT FIND ANY RECORD OF THIS, BUT IT IS LOCATED VERY CLOSE TO THE COMPUTED LOCATION OF THIS CORNER, IS IN A VERY OLD FENCE LINE AND IS THE SAME TYPE OF MONUMENT SET TO MARK THE CENTER-EAST 1/16 CORNER. IT ALSO HAD FLAGGING RUNNING WEST FROM IT, WHICH FOLLOWED LINE VERY CLOSELY. THE INITIAL FIELD SURVEYING WAS PERFORMED BY JEREMY LEONARD, DEREK FEIGEL AND DARRELL JONES. SUBSEQUENT FIELD SURVEYING WAS PERFORMED BY NOLAN FROMDAHL. OFFICE CALCULATIONS AND DRAFTING WERE PERFORMED BY DEREK FEIGEL.



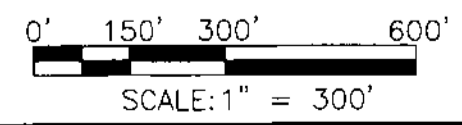
LEGEND

- ⊙ FOUND MONUMENT AS NOTED
- SET 5/8" x 30" IRON ROD w/YELLOW PLASTIC CAP STAMPED "IE ENGINEERING"
- () RECORD PER M34-22
- (()) RECORD PER DEED - INST. NO. 2017-14765
- [] RECORD PER M131-1

REGISTERED PROFESSIONAL LAND SURVEYOR

Derek Feigel
DEREK ALLEN FEIGEL
 JULY 10, 2018
77555

EXPIRES: 12/31/19



MAP FILE M174-62

i.e. ENGINEERING
 809 SE Pine Street
 Roseburg, Oregon 97470
 PHONE (541) 673-0166
 FAX (541) 440-9392
 iemail@ieengineering.com

SURVEYED FOR:
 PHIL BENEDETTI
 1685 NW AVERY
 ROSEBURG, OR 97471

PAGE: 1 OF 1
 JOB NO: 2623-02
 DATE: 10-1-18

RECORD OF SURVEY AND PARTIAL SUBDIVISION OF S.E. 1/4 OF SECTION 17
 TOWNSHIP 26 SOUTH, RANGE 6 WEST,
 WILLAMETTE MERIDIAN, DOUGLAS COUNTY, OREGON