

PROPERTY SURVEY LOCATED IN THE NE1/4 OF SECTION 32,
TOWNSHIP 20 SOUTH, RANGE 10 WEST, W.M., DOUGLAS COUNTY, OREGON.

FILED
Date: 9-10-18 By: DJ
This survey consists of:
Map: M174-60
Narrative:
Corner Rpt:

DOUGLAS COUNTY
SURVEYOR

SURVEY FOR: RAYONIER
PACIFIC RESOURCE UNIT
2990 BROADWAY, NORTH BEND, OR 97459

SURVEY BY: ESTABROOK LAND SURVEYING, INC.
PO BOX 574, LAKESIDE, OR 97449



SCALE 1" = 200'

NARRATIVE

THE PURPOSE OF THIS SURVEY WAS TO MARK BOUNDARY LINES FOR LOGGING PURPOSES. THE PROCEDURE WAS TO TRAVERSE BETWEEN EXISTING MONUMENTS AS SHOWN HEREON. THE CENTER NORTH 1/16 CORNER WAS PREVIOUSLY MARKED WITH AN X SCRIBED INTO A ROCK FACE AND TWO HEMLOCK BT'S. WE SEARCHED FOR THE X MARK AND COULD NOT FIND ANY SIGN OF IT. THE RECORD HEMLOCK BT'S ARE ALSO GONE NOW. WE DID FIND A BT TAG ON THE GROUND IN THE SEARCH AREA. I THEREFORE REESTABLISHED THE CENTER NORTH 1/16 CORNER AT THE MID POINT BETWEEN THE FOUND CENTER 1/4 CORNER AND THE NORTH 1/4 CORNER OF SECTION 32. I THEN MARKED THE BOUNDARY LINES WITH ORANGE FLAGGING AND BLAZES PAINTED ORANGE. EQUIPMENT USED WAS A TOPCON 312 TOTAL STATION WITH TDS RANGER DATA COLLECTOR. ASSISTING PERSONNEL WERE PAT COY AND JOHN RONDEAU. NOTE: WGS84 LATITUDE AND LONGITUDE ARE PER GARMIN ETREX HAND HELD GPS. THESE POSITIONS ARE NOT SURVEY GRADE AND SHOULD NOT BE USED TO ESTABLISH BOUNDARIES, BUT ARE PROVIDED TO ASSIST IN RESOURCE MANAGEMENT.

BASIS OF BEARING
BASIS OF BEARING IS PER ASSUMED PER M76-55.
RECORD REFERENCE INFORMATION
M76-55 AND M93-28

LEGEND

- ⊙ FOUND CORNER AS NOTED
- SET 5/8" X 19" IRON ROD WITH PLASTIC CAP MARKED "ESTABROOK LS2703"
- ++++ BOUNDARY LINE MARKED WITH ORANGE BLAZES AND ORANGE FLAGGING
- ()1 RECORD PER M76-55
- ()2 RECORD PER M93-28

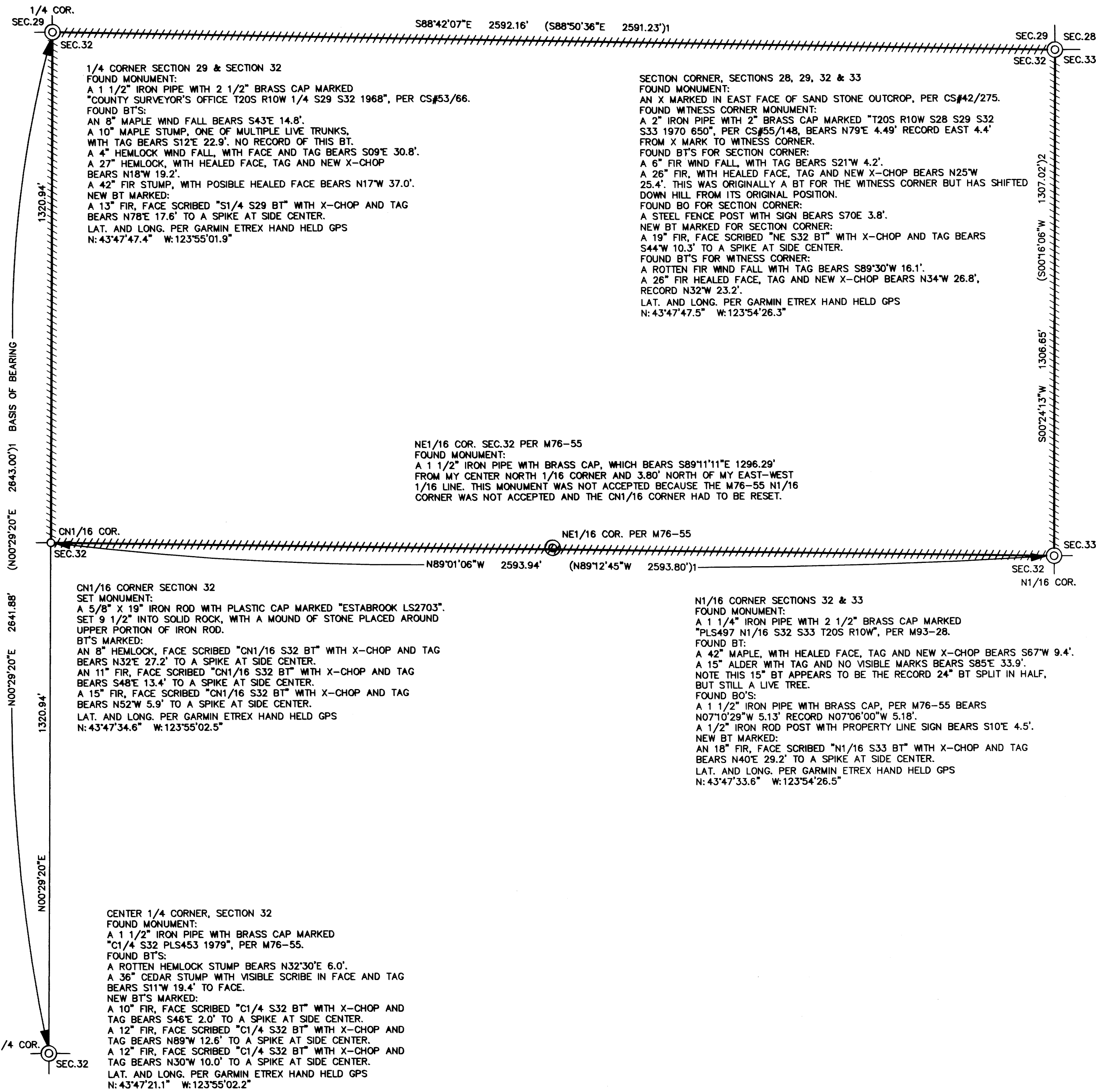
REGISTERED
PROFESSIONAL
LAND SURVEYOR

Jerry Lee Estabrook

OREGON
JUNE 30, 1995
JERRY LEE ESTABROOK
2703

EXPIRES 12/31/19

DRAWN BY: JLE	DATE: 8/7/18
CHECKED BY: TJE	DRAWING NO.: RR32
JOB NO.: 2018-17	SHEET 1 OF 1



1/4 CORNER SECTION 29 & SECTION 32
FOUND MONUMENT:
A 1 1/2" IRON PIPE WITH 2 1/2" BRASS CAP MARKED
"COUNTY SURVEYOR'S OFFICE T20S R10W 1/4 S29 S32 1968", PER CS#53/66.
FOUND BT'S:
AN 8" MAPLE WIND FALL BEARS S43E 14.8'.
A 10" MAPLE STUMP, ONE OF MULTIPLE LIVE TRUNKS,
WITH TAG BEARS S12E 22.9'. NO RECORD OF THIS BT.
A 4" HEMLOCK WIND FALL, WITH FACE AND TAG BEARS S09E 30.8'.
A 27" HEMLOCK, WITH HEALED FACE, TAG AND NEW X-CHOP
BEARS N18W 19.2'.
A 42" FIR STUMP, WITH POSSIBLE HEALED FACE BEARS N17W 37.0'.
NEW BT MARKED:
A 13" FIR, FACE SCRIBED "S1/4 S29 BT" WITH X-CHOP AND TAG
BEARS N78E 17.6' TO A SPIKE AT SIDE CENTER.
LAT. AND LONG. PER GARMIN ETREX HAND HELD GPS
N: 43°47'47.4" W: 123°55'01.9"

SECTION CORNER, SECTIONS 28, 29, 32 & 33
FOUND MONUMENT:
AN X MARKED IN EAST FACE OF SAND STONE OUTCROP, PER CS#42/275.
FOUND WITNESS CORNER MONUMENT:
A 2" IRON PIPE WITH 2" BRASS CAP MARKED "T20S R10W S28 S29 S32
S33 1970 650", PER CS#55/148, BEARS N79E 4.49' RECORD EAST 4.4'
FROM X MARK TO WITNESS CORNER.
FOUND BT'S FOR SECTION CORNER:
A 6" FIR WIND FALL, WITH TAG BEARS S21W 4.2'.
A 26" FIR, WITH HEALED FACE, TAG AND NEW X-CHOP BEARS N25W
25.4'. THIS WAS ORIGINALLY A BT FOR THE WITNESS CORNER BUT HAS SHIFTED
DOWN HILL FROM ITS ORIGINAL POSITION.
FOUND BO FOR SECTION CORNER:
A STEEL FENCE POST WITH SIGN BEARS S70E 3.8'.
NEW BT MARKED FOR SECTION CORNER:
A 19" FIR, FACE SCRIBED "NE S32 BT" WITH X-CHOP AND TAG BEARS
S44W 10.3' TO A SPIKE AT SIDE CENTER.
FOUND BT'S FOR WITNESS CORNER:
A ROTTEN FIR WIND FALL WITH TAG BEARS S89°30'W 16.1'.
A 26" FIR HEALED FACE, TAG AND NEW X-CHOP BEARS N34°W 26.8',
RECORD N32W 23.2'.
LAT. AND LONG. PER GARMIN ETREX HAND HELD GPS
N: 43°47'47.5" W: 123°54'26.3"

NE1/16 COR. SEC.32 PER M76-55
FOUND MONUMENT:
A 1 1/2" IRON PIPE WITH BRASS CAP, WHICH BEARS S89°11'11"E 1296.29'
FROM MY CENTER NORTH 1/16 CORNER AND 3.80' NORTH OF MY EAST-WEST
1/16 LINE. THIS MONUMENT WAS NOT ACCEPTED BECAUSE THE M76-55 N1/16
CORNER WAS NOT ACCEPTED AND THE CN1/16 CORNER HAD TO BE RESET.

CN1/16 CORNER SECTION 32
SET MONUMENT:
A 5/8" X 19" IRON ROD WITH PLASTIC CAP MARKED "ESTABROOK LS2703".
SET 9 1/2" INTO SOLID ROCK, WITH A MOUND OF STONE PLACED AROUND
UPPER PORTION OF IRON ROD.
BT'S MARKED:
AN 8" HEMLOCK, FACE SCRIBED "CN1/16 S32 BT" WITH X-CHOP AND TAG
BEARS N32E 27.2' TO A SPIKE AT SIDE CENTER.
AN 11" FIR, FACE SCRIBED "CN1/16 S32 BT" WITH X-CHOP AND TAG
BEARS S48E 13.4' TO A SPIKE AT SIDE CENTER.
A 15" FIR, FACE SCRIBED "CN1/16 S32 BT" WITH X-CHOP AND TAG
BEARS N52W 5.9' TO A SPIKE AT SIDE CENTER.
LAT. AND LONG. PER GARMIN ETREX HAND HELD GPS
N: 43°47'34.6" W: 123°55'02.5"

N1/16 CORNER SECTIONS 32 & 33
FOUND MONUMENT:
A 1 1/4" IRON PIPE WITH 2 1/2" BRASS CAP MARKED
"PLS497 N1/16 S32 S33 T20S R10W", PER M93-28.
FOUND BT:
A 42" MAPLE, WITH HEALED FACE, TAG AND NEW X-CHOP BEARS S67W 9.4'.
A 15" ALDER WITH TAG AND NO VISIBLE MARKS BEARS S85E 33.9'.
NOTE THIS 15" BT APPEARS TO BE THE RECORD 24" BT SPLIT IN HALF,
BUT STILL A LIVE TREE.
FOUND BO'S:
A 1 1/2" IRON PIPE WITH BRASS CAP, PER M76-55 BEARS
N07°10'29"W 5.13' RECORD N07°06'00"W 5.18'.
A 1/2" IRON ROD POST WITH PROPERTY LINE SIGN BEARS S10E 4.5'.
NEW BT MARKED:
AN 18" FIR, FACE SCRIBED "N1/16 S33 BT" WITH X-CHOP AND TAG
BEARS N40E 29.2' TO A SPIKE AT SIDE CENTER.
LAT. AND LONG. PER GARMIN ETREX HAND HELD GPS
N: 43°47'33.6" W: 123°54'26.5"

CENTER 1/4 CORNER, SECTION 32
FOUND MONUMENT:
A 1 1/2" IRON PIPE WITH BRASS CAP MARKED
"C1/4 S32 PLS453 1979", PER M76-55.
FOUND BT'S:
A ROTTEN HEMLOCK STUMP BEARS N32°30'E 6.0'.
A 36" CEDAR STUMP WITH VISIBLE SCRIBE IN FACE AND TAG
BEARS S11W 19.4' TO FACE.
NEW BT'S MARKED:
A 10" FIR, FACE SCRIBED "C1/4 S32 BT" WITH X-CHOP AND
TAG BEARS S46E 2.0' TO A SPIKE AT SIDE CENTER.
A 12" FIR, FACE SCRIBED "C1/4 S32 BT" WITH X-CHOP AND
TAG BEARS N89W 12.6' TO A SPIKE AT SIDE CENTER.
A 12" FIR, FACE SCRIBED "C1/4 S32 BT" WITH X-CHOP AND
TAG BEARS N30W 10.0' TO A SPIKE AT SIDE CENTER.
LAT. AND LONG. PER GARMIN ETREX HAND HELD GPS
N: 43°47'21.1" W: 123°55'02.2"

MAP FILE M174-60

MAP FILE M174-60