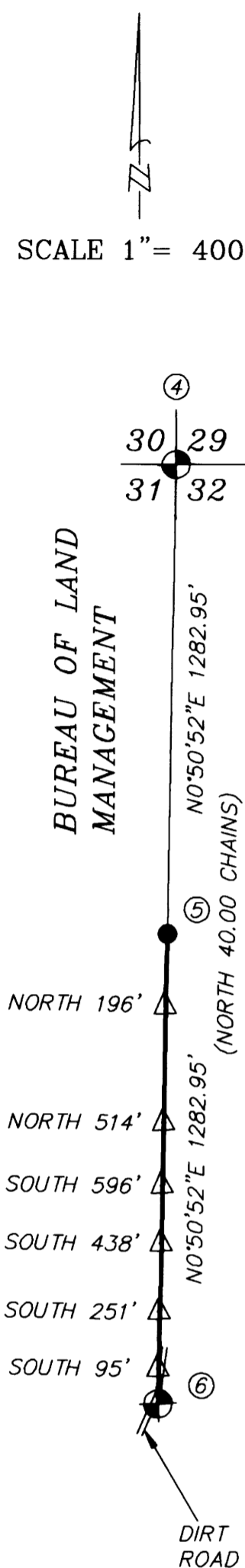


BOUNDARY SURVEY IN
NORTHEAST 1/4 & NORTHWEST 1/4 OF SECTION 32, T32S, R7W, W.M.
DOUGLAS COUNTY, OREGON
NOVEMBER 14, 2017

FILED
 Date: 1-3-2018 By: *[Signature]*
 This survey consists of:
 Map: M174-4
 Narrative:
 Corner Rpt:
DOUGLAS COUNTY SURVEYOR

MAP FILE M174-4

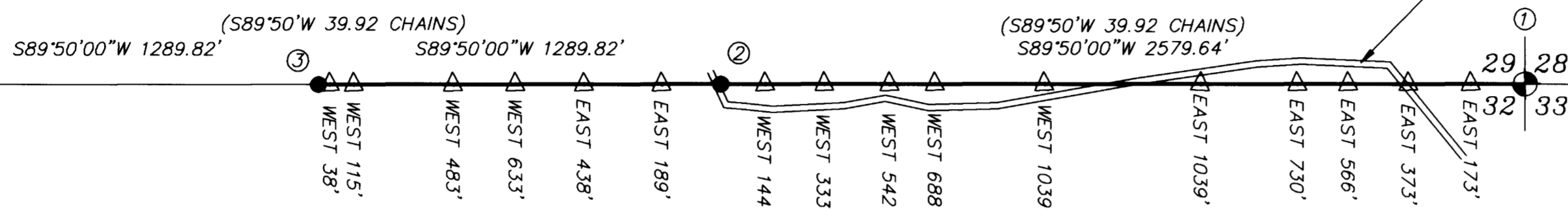
SCALE 1" = 400'



-BASIS OF BEARING-
 (S89°50'W 79.83 CHAINS)
 S89°50'00"W 5159.28'

BUREAU OF LAND
 MANAGEMENT

GRAVEL ROAD

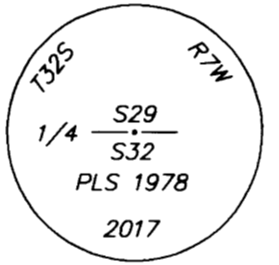


-NARRATIVE-

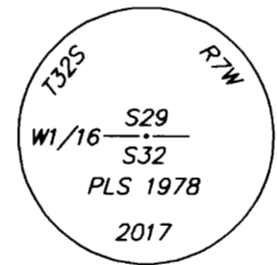
THIS SURVEY WAS MADE IN APRIL THROUGH JUNE AND NOVEMBER, 2017 BY DANIEL W. BAKER OF BAKER AND ASSOCIATES SURVEYORS, INC. FOR WEYERHAEUSER COMPANY IN THE NORTHEAST 1/4 AND THE NORTHWEST 1/4 OF SECTION 32, TOWNSHIP 32 SOUTH, RANGE 7 WEST, WILLAMETTE MERIDIAN. THE BASIS OF BEARING FOR THIS SURVEY IS THE NORTH LINE OF SECTION 32 PER THE 1881 GENERAL LAND OFFICE SURVEY. CLOSED TRAVERSES WERE RUN BETWEEN FOUND CORNERS FOR CONTROL, WITH AN ERROR OF CLOSURE OF GREATER THAN 1' IN 30,000', BEFORE ANGULAR ADJUSTMENT. THE NORTHEAST SECTION CORNER, NORTHWEST SECTION CORNER AND THE WEST 1/4 CORNER WERE PERPETUATED ORIGINAL CORNER POSITIONS. THE NORTH 1/4 CORNER WAS DESTROYED IN ROAD CONSTRUCTION AND WAS RE-ESTABLISHED AT MIDPOINT ON THE NORTH SECTION LINE. THE TRUE SECTION LINE WAS MARKED BY BLAZING TREES ON EITHER SIDE OF THE TRUE LINE (BLAZES PAINTED ORANGE) AND BY FLAGGING WITH ORANGE RIBBON AND SETTING 5 FOOT METAL POSTS AT RANDOM INTERVALS ALONG THE TRUE SECTION LINE, AS NOTED. THE WEST 1/16 CORNER ON THE NORTH SECTION LINE AND THE NORTH 1/16 CORNER ON THE WEST LINE WERE ESTABLISHED AT MIDPOINT BETWEEN THE APPROPRIATE CORNERS. THE CORNERS ESTABLISHED IN THIS SURVEY WERE MONUMENTED WITH 5/8" X 36" REBARS WITH 2 1/2" ALUMINUM CAP, MARKED AS SHOWN.

① SECTION CORNER 28, 29, 32, 33
 FOUND: 2 1/2" DOUGLAS COUNTY BRASS CAP "1967"
 BEARINGS AND DISTANCES TO BEARING TREES ARE RECORD PER 300200 CORNER CARD
 65" FIR, N18°E, 58.1' TO CENTER-ORIGINAL BEARING TREE (BARK SCRIBED)
 15" MADRONE, N45°E, 33.2' TO CENTER-1967 DOUGLAS COUNTY BEARING TREE
 13" MADRONE, S26°E, 2.7' TO CENTER-1967 DOUGLAS COUNTY BEARING TREE (SCRIBE VISIBLE)
 15" MADRONE, S9°W, 20.0' TO CENTER-1967 DOUGLAS COUNTY BEARING TREE (SCRIBE VISIBLE)
 65" FIR, N54°W, 85.8' TO CENTER-ORIGINAL BEARING TREE (BARK SCRIBED)
 11" MADRONE, N44°W, 12.8' TO CENTER-1967 DOUGLAS COUNTY BEARING TREE (SCRIBE VISIBLE)
 BEARINGS AND DISTANCES TO BEARING TREES ARE RECORD PER 300200 CORNER CARD
 SET 5 FOOT METAL POST ALONGSIDE CORNER

② 1/4 CORNER 29 AND 32
 SET: 5/8" X 36" REBAR WITH 2 1/2" ALUMINUM CAP, MARKED AS SHOWN
 57" PINE, N19°E, 55.8' TO NAIL SIDE/CENTER-SCRIBED "1/4S29 BT"
 6" PINE, S77°E, 8.5' TO NAIL SIDE/CENTER-SCRIBED "1/4S32 BT"
 5/8" X 30" REBAR WITH RED PLASTIC CAP "REF. MON. PLS 1978"
 BEARS S10°46'16"W, 33.25'
 5/8" X 30" REBAR WITH RED PLASTIC CAP "REF. MON. PLS 1978"
 N59°06'00"W, 52.79'
 5 FOOT METAL POST ALONGSIDE CORNER

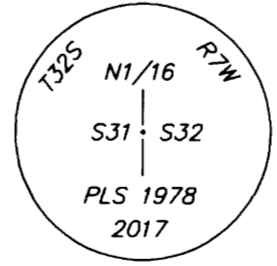


③ WEST 1/16 CORNER 29 & 32
 SET: 5/8" X 36" REBAR WITH 2 1/2" ALUMINUM CAP, MARKED AS SHOWN
 51" FIR, N81°E, 11.3' TO NAIL SIDE/CENTER-SCRIBED "W1/16S29 BT"
 43" FIR, S50°W, 12.5' TO NAIL SIDE/CENTER-SCRIBED "W1/16S32 BT"
 5 FOOT METAL POST ALONGSIDE CORNER



④ SECTION CORNER 29, 30, 31, 32
 FOUND: 2 1/2" DOUGLAS COUNTY BRASS CAP "1968"
 28" FIR, N20°E, 31.7' TO CENTER-ORIGINAL BEARING TREE (GLO RECORD=N20°E 48 LKS)
 36" FIR, S66°E, 16.5' TO CENTER-ORIGINAL BEARING TREE (GLO RECORD=S65°E, 25 LKS)
 40" PINE SNAG, S83°W, 28.5' TO CENTER-DOUGLAS COUNTY BEARING TREE (COUNTY RECORD=S82°W, 28.4')
 22" FIR, N17°W, 19.0' TO CENTER-DOUGLAS COUNTY BEARING TREE (COUNTY RECORD=N17°W, 19.2')
 MARKED: 7" FIR, S83°W, 27.1' TO NAIL SIDE/CENTER-SCRIBED "T32SR7WS31 BT"
 SET 5 FOOT METAL POST ALONGSIDE CORNER

⑤ NORTH 1/16 CORNER 31 & 32
 SET: 5/8" X 36" REBAR WITH 2 1/2" ALUMINUM CAP, MARKED AS SHOWN
 MARKED: 13" FIR, S48°W, 27.7' TO NAIL SIDE/CENTER-SCRIBED "N1/16S31 BT"
 6" FIR, S46°E, 20.2' TO NAIL SIDE/CENTER-SCRIBED "N1/16S32 BT"
 5 FOOT METAL POST ALONGSIDE CORNER



⑥ 1/4 CORNER 31 & 32
 FOUND: 2 1/2" DOUGLAS COUNTY BRASS CAP "1968"
 17" FIR, N85°E, 31.9' TO CENTER-1968 DOUGLAS COUNTY BEARING TREE (RECORD=N85°E, 31.8')
 48" PINE STUMP, N82°E, 22.7' TO CENTER-ORIGINAL BEARING TREE (RECORD=N82°E, 30 LKS)
 44" FIR, S72°W, 53.0' TO CENTER-ORIGINAL BEARING TREE (RECORD=S72°W, 80 LKS)
 19" CEDAR, N84°W, 32.0' TO CENTER-1968 DOUGLAS COUNTY BEARING TREE (RECORD=N84°W, 32.2')
 MARKED: 11" FIR, S10°E, 10.5' TO NAIL SIDE/CENTER-SCRIBED "1/4S32 BT"
 5 FOOT METAL POST ALONGSIDE CORNER

REGISTERED
 PROFESSIONAL
 LAND SURVEYOR

 OREGON
 JULY 16, 1982
 DANIEL W. BAKER
 1978

EXPIRES 12/31/17

I CERTIFY THAT THIS MAP WAS PREPARED
 USING A HP51645A INK CARTRIDGE ON
 JPC-4M2 DOUBLE MATTE FILM

BASIS OF BEARING: NORTH LINE OF SECTION 32
 T32S, R7W, WM PER 1881 GLO SURVEY SURVEY

LEGEND

- FOUND - GOVERNMENT CORNER POSITION (AS NOTED)
- SET - 5/8" X 36" REBAR WITH 2 1/2" ALUMINUM CAP, MARKED AS SHOWN
- BLAZED AND PAINTED PROPERTY LINE
- RECORD DATA - 1881 GLO SURVEY
- 5 FOOT STEEL POSTS SET ON PROPERTY LINE (DISTANCES AND CARDINAL DIRECTION ARE FROM THE NEAREST CORNER I.E. = SOUTH 123')
- ROAD

BOUNDARY SURVEY IN NE 1/4 & NW 1/4 OF SECTION 32, T32S, R7W, W.M. DOUGLAS COUNTY, OREGON	
CLIENT: WEYERHAEUSER COMPANY	
DRAWN BY: DWB	BAKER AND ASSOCIATES, SURVEYORS
DATE: 11/14/17	1347 MARKET STREET
FILE: PL320732	SPRINGFIELD, OREGON (541) 343-7243

MAP FILE M174-4