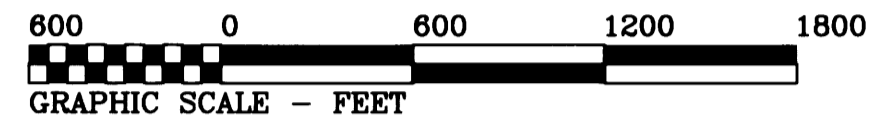
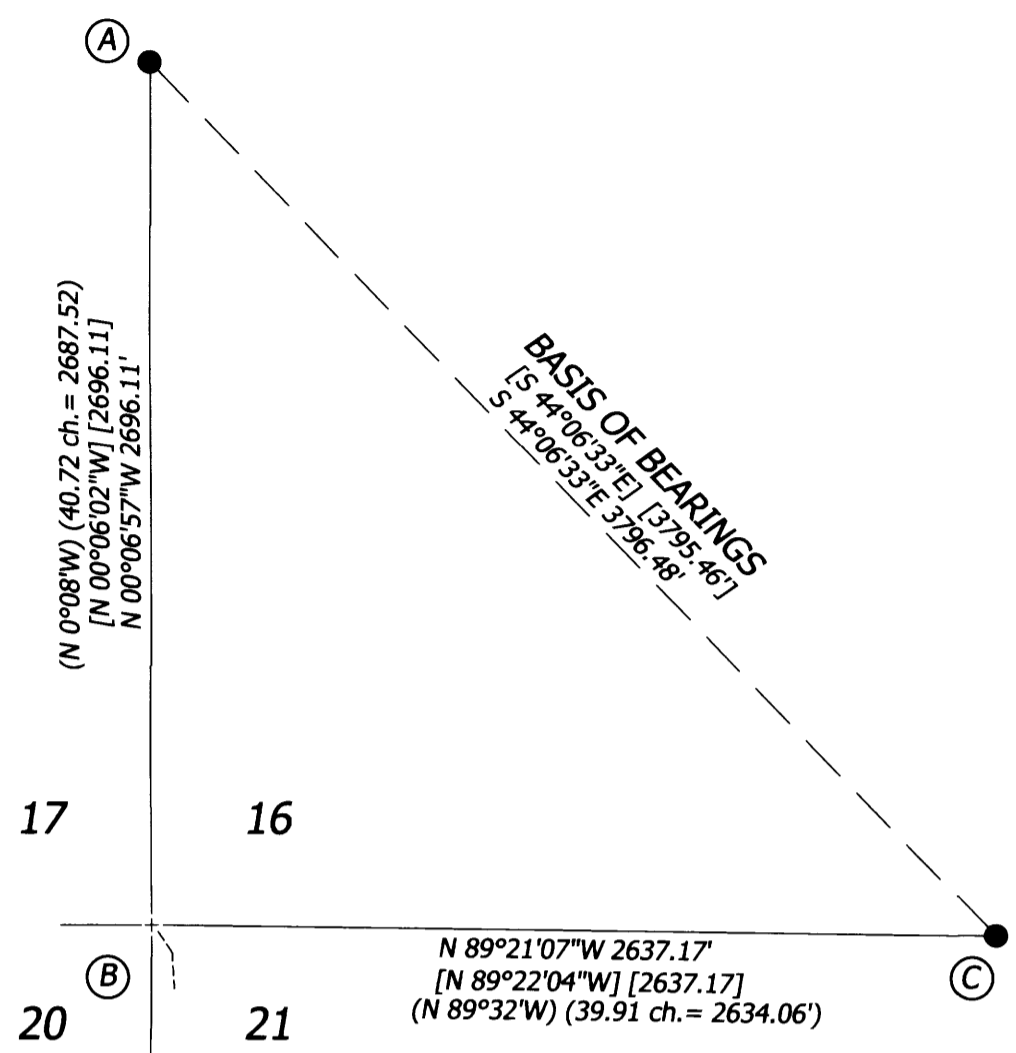


RECORD OF SURVEY
FOR
OXBOW TIMBER 1 L.L.C.
IN THE
WEST HALF OF SECTION 21
AND SOUTHWEST 1/4 OF SECTION 16
T 19 S, R 8 W. W.M.
DOUGLAS COUNTY, OREGON

FEBRUARY 5, 2018

FILED
DATE 4-2-2018 BY: XC
THIS SURVEY CONSISTS OF:
MAP: M 174-18
NARRATIVE: _____
CORNER RPT: _____
DOUGLAS COUNTY
SURVEYOR



REGISTERED
PROFESSIONAL
LAND SURVEYOR

OREGON
JULY 26, 1988
ROBERT ALAN COOK
2336
RENEWS: 12/31/2019

NORTHSTAR SURVEYING, INC.
720 N.W. 4th Street
Corvallis, Oregon 97330
Phone: 541-757-9050
email: bcook@northstarsurveying.com
17399 CABIN CREEK

CORNER DATA

- (A) **1/4 CORNER SECTIONS 16 AND 17**
Found 1952 GLO brass cap up 20" on north slope with steel post south 1.5'. Monument lies on the west side of a clear cut.
20" D. Fir N 37°E 20.5 ft. with healed face, tag and paint.
32" D. Fir N 73°30'W 14.5 ft. with healed face, tag and paint.
66" D. Fir stump N 86°30'E 62.0'.
- (C) **1/4 CORNER SECTIONS 26 AND 21**
Found 1952 GLO brass cap up 3" with steel post west 2'. Monument lies about 50 feet west of road.
11" D. Fir N 17°W 3.7' with healed face, tag and paint.
56" D. Fir N 81°E 14.5' with healed face, tag and paint.
50" D. Fir S 19°30'W 38.3' with healed face, tag and paint.
55" D. Fir S 42°30'W 48.8' with healed face, tag and paint.
- (D) **1/4 CORNER SECTIONS 20 AND 21**
Position lies in a very steep slide. My zenith angle was 130°. All remains of the 1952 monument are destroyed. I managed to set a 4" "MagSpike" in a root at the corner position but it was very unstable and I set a witness corner.
Set 5/8" x 30" rebar with a 2" aluminum cap stamped "1/4 S20 S21 2018 WC" with and arrow aiming North, on line S 00°11'56"E 95.00 feet on the ridge. A steel post was driven 0.5' West.
17" Hemlock N 52°E 8.8 ft. scribed "WC" above "BT".
16" D. Fir S 47°E 6.8 ft. scribed "WC" above "BT".
21" D. Fir S 12°E 15.1 ft. scribed "WC" above "BT".
18" D. Fir S 52°W 18.5 ft. scribed "WC" above "BT".
- (E) **CORNER OF SECTIONS 20, 21, 28 AND 29**
Found 1952 GLO brass cap witness corner to uprooted corner tree. Corner lies N 0°25'E 3.96 ft. A steel post is adjacent to the corner.
70" D. Fir snag S 66°30'E 34.8 ft., no marks.
40" D. Fir stump N 31°30'E 67.3 ft. with scribing visible.
37" Maple S 80°E 73.3 ft. healed blaze.
13" Alder S 30°45'W 50.8 ft. with bark scribes.
28" Maple N 65°30'W 35.0 ft. with healed blaze.
74" D. Fir S 69°30'W 68.7 ft. with healed face.

LEGEND

-Found Monument: 1952 GLO brass cap per Plat approved May 29, 1953.
-Set Monument: 5/8" x 30" rebar with 2" aluminum cap.
- +Computed position, nothing found or set.
- () ..Record data per GLO Plat approved May 29, 1953.
- [] ..Record data per Map File M 167-65.
- Line marked with steel posts with boundary signs, red painted blazes and red ribbon.

NARRATIVE

The purpose of this survey was to mark and post my client's boundary line along the line between Sections 20 and 21 as shown. In 1952, the GLO surveyed this line and my plan was to accept the GLO monuments. The 1/4 corner of Sections 20 and 21 at (D) was completely destroyed by a slide. There was no evidence recovered at this position.

In 2014, Map File M 167-65 was surveyed. I located two 1/4 corners from this very current survey at (A) and (C) and fit very nicely relative to the terrain in this area. I oriented to this survey and computed the Section corner at (B) by distance-distance intersection.

I computed the 1/4 corner position at (D) by proportion holding dimensions from the 1953 plat. All lines shown fit to the 1953 bearings nicely, but the distances were off a bit. This is not unusual considering the 1953 surveying methods and the steep terrain. The position at (D) fell in the slide and I managed to set a 4" "MagSpike" at the corner. It was very unstable so I set the Witness corner shown and posted the line.