

**SURVEY FOR: STATE OF OREGON – DEPARTMENT OF FORESTRY,
LOCATED IN THE SE1/4 OF SECTION 16, TOWNSHIP 22 SOUTH, RANGE 11 WEST, W.M., DOUGLAS COUNTY OREGON**

CONTRACT: DEAN MILLER SURVEY, CONTRACT #ODF-1083A-17

SURVEY BY: ESTABROOK LAND SURVEYING INC.
PO BOX 574, LAKESIDE, OR 97449

SURVEY PARTY: JERRY ESTABROOK – PARTY CHIEF / INSTRUMENT MAN
PAT COY – CHAIN MAN / BRUSHER
MARSHAL KOLOKYTHOS – CHAIN MAN / BRUSHER

DATE OF COMPLETION: FEBRUARY 2017

SCALE: 1" = 200'

**REGISTERED
PROFESSIONAL
LAND SURVEYOR**

Jerry Lee Estabrook

OREGON
JUNE 30, 1995
JERRY LEE ESTABROOK
2703

EXPIRES 12/31/17

NARRATIVE:

THE PURPOSE OF THIS SURVEY WAS TO MARK BOUNDARY LINES FOR RESOURCE MANAGEMENT. THE PROCEDURE WAS TO TRAVERSE BETWEEN EXISTING CORNERS AND MARK BOUNDARY LINES WITH ORANGE FLAGGING, ORANGE BLAZES AND ORANGE CARSONITE POST. ALL SURVEYING AND BOUNDARY MARKING WAS PERFORMED IN ACCORDANCE WITH THE BLM MANUAL OF SURVEYING INSTRUCTIONS. EQUIPMENT USED WAS A TOPCON 312 TOTAL STATION WITH TDS RANGER DATA COLLECTOR. ASSISTING PERSONNEL WERE PAT COY AND MARSHAL KOLOKYTHOS.

BASIS OF BEARING:

BASED ON SOLAR PER M51-28

RECORD REFERENCE INFORMATION:

DOUGLAS COUNTY RECORD SURVEYS M51-28 AND M42-26.

SE1/4 SECTION 16

1/4 COR. SEC.16 & SEC.21

FOUND MONUMENT:

A 1 1/2" IRON PIPE WITH 3" BRASS CAP MARKED
"1/4 S16 S21 1972 RS359" PER M51-28.

FOUND BT'S:

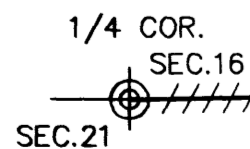
A ROTTEN STUMP WITH NO VISIBLE MARKS BEARS N65°E 18.7'.
A ROTTEN FIR STUMP WITH VISIBLE SCRIBE BEARS S28°E 21.8'.

NEW BT'S MARKED:

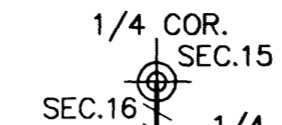
A 16" FIR FACE SCRIBED "S1/4 S16 BT" WITH MAG NAIL AND WASHER STAMPED "LS2703" IN BOTTOM OF FACE AND WITH X-CHOP AND YMLP AT BREAST HEIGHT BEARS N88°E 44.1' TO A SPIKE AT SIDE CENTER.
A 9" FIR FACE SCRIBED "N1/4 S21 BT" WITH MAG NAIL AND WASHER STAMPED "LS2703" IN BOTTOM OF FACE AND WITH X-CHOP AND YMLP AT BREAST HEIGHT BEARS S32°E 21.3' TO A SPIKE AT SIDE CENTER.
AN 18" FIR FACE SCRIBED "N1/4 S21 BT" WITH MAG NAIL AND WASHER STAMPED "LS2703" IN BOTTOM OF FACE AND WITH X-CHOP AND YMLP AT BREAST HEIGHT BEARS S03°W 21.8' TO A SPIKE AT SIDE CENTER.
A 12" FIR FACE SCRIBED "N1/4 S21 BT" WITH MAG NAIL AND WASHER STAMPED "LS2703" IN BOTTOM OF FACE AND WITH X-CHOP AND YMLP AT BREAST HEIGHT BEARS S86°W 13.2' TO A SPIKE AT SIDE CENTER.

NEW BO SET:

AN ORANGE CARSONITE POST BEARS WEST 2.0'.



N88°52'40"E 2578.59' (N88°52'40"E 2578.67')1 BASIS OF BEARING



1/4 COR. SEC.15 & SEC.16

FOUND MONUMENT:

A 1 1/2" IRON PIPE WITH 3" BRASS CAP MARKED
"1/4 S16 S15 1970" PER M42-26.

FOUND BT'S:

A 20" FIR SNAG WITH VISIBLE SCRIBE IN FACE BEARS N13°W 12.9'.
A ROTTEN FIR STUMP WITH NO VISIBLE MARKS BEARS N22°30'E 67.7'.

NEW BT'S MARKED:

A 17" FIR FACE SCRIBED "E1/4 S16 BT" WITH MAG NAIL AND WASHER STAMPED "LS2703" IN BOTTOM OF FACE AND WITH X-CHOP AND YMLP AT BREAST HEIGHT BEARS S13°W 26.0' TO A SPIKE AT SIDE CENTER.
A 12" FIR FACE SCRIBED "E1/4 S16 BT" WITH MAG NAIL AND WASHER STAMPED "LS2703" IN BOTTOM OF FACE AND WITH X-CHOP AND YMLP AT BREAST HEIGHT BEARS S72°W 26.2' TO A SPIKE AT SIDE CENTER.
A 10" FIR FACE SCRIBED "E1/4 S16 BT" WITH MAG NAIL AND WASHER STAMPED "LS2703" IN BOTTOM OF FACE AND WITH X-CHOP AND YMLP AT BREAST HEIGHT BEARS N44°W 29.5' TO A SPIKE AT SIDE CENTER.
A 38" HEMLOCK FACE SCRIBED "E1/4 S16 BT" WITH MAG NAIL AND WASHER STAMPED "LS2703" IN BOTTOM OF FACE AND WITH X-CHOP AND YMLP AT BREAST HEIGHT BEARS N06°W 8.3' TO A SPIKE AT SIDE CENTER.
NEW BO SET:
AN ORANGE CARSONITE POST NORTH 2.0'.

LEGEND

- ⊙ FOUND CORNER AS NOTED
- BOUNDARY LINE MARKED WITH ORANGE FLAGGING,
- ORANGE BLAZES AND ORANGE CARSONITE POST
- YMLP YELLOW METAL LOCATION POSTER
- BT BEARING TREE
- BO BEARING OBJECT
- ()1 RECORD PER M51-28
- ()2 RECORD PER M42-26

SECTION CORNER SEC.15, SEC.16, SEC.21 & SEC.22

FOUND MONUMENT:

A 1 1/2" IRON PIPE WITH 3" BRASS CAP MARKED
"T22S R11W S15 S16 S21 S22 1970 RS359" PER CS#55/154.

FOUND BT'S:

AN ORIGINAL FIR, NOW ROTTEN SNAG WITH NO VISIBLE MARKS
BEARS S60°E 2.64' TO FACE.

AN ORIGINAL 36" FIR WITH HEALED FACE AND NEW TAG
BEARS S69°W 9.9'.

AN ORIGINAL FIR, NOW ROTTEN STUMP WITH NO VISIBLE MARKS
BEARS N25°W 7.26'.

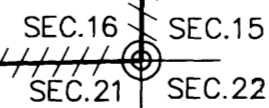
A 33' FIR WITH HEALED FACE AND NEW TAG BEARS S62°E
43.3' TO FACE.

NEW BT'S MARKED:

A 36" FIR FACE SCRIBED "SW S15 BT" WITH MAG NAIL AND WASHER STAMPED "LS2703" IN BOTTOM OF FACE AND WITH X-CHOP AND YMLP AT BREAST HEIGHT BEARS N01°E 50.7' TO A SPIKE AT SIDE CENTER.
A 25" FIR FACE SCRIBED "NW S22 BT" WITH MAG NAIL AND WASHER STAMPED "LS2703" IN BOTTOM OF FACE AND WITH X-CHOP AND YMLP AT BREAST HEIGHT BEARS S84°E 48.3' TO A SPIKE AT SIDE CENTER.

NEW BO SET:

AN ORANGE CARSONITE POST BEARS WEST 2.0'.



N00°24'37"E 2595.50' (N00°25'17"E 2595.46')2

DRAWN BY: JLE	DATE: 2/1/17
CHECKED BY: TJE	DRAWING NO.: DEAN16
JOB NO.: 2017-1	SHEET 1 OF 1



DRAFT FILE M173-9

DRAFT FILE M173-9

FILED
Date: 2-6-2017 By: JLE
This survey consists of:
Map: M 173-9
Name:
Corner Spt:
DOUGLAS COUNTY
SURVEYOR