

MAP OF SURVEY

LOCATED in the NE 1/4 of Section 31 and the NW 1/4 of Section 32, T. 24 S., R. 5 W., W.M.
in Douglas County, Oregon.

January 26, 2017

SURVEYED FOR: RON LOVEGROVE
P.O. BOX 150
OAKLAND, OREGON 97462

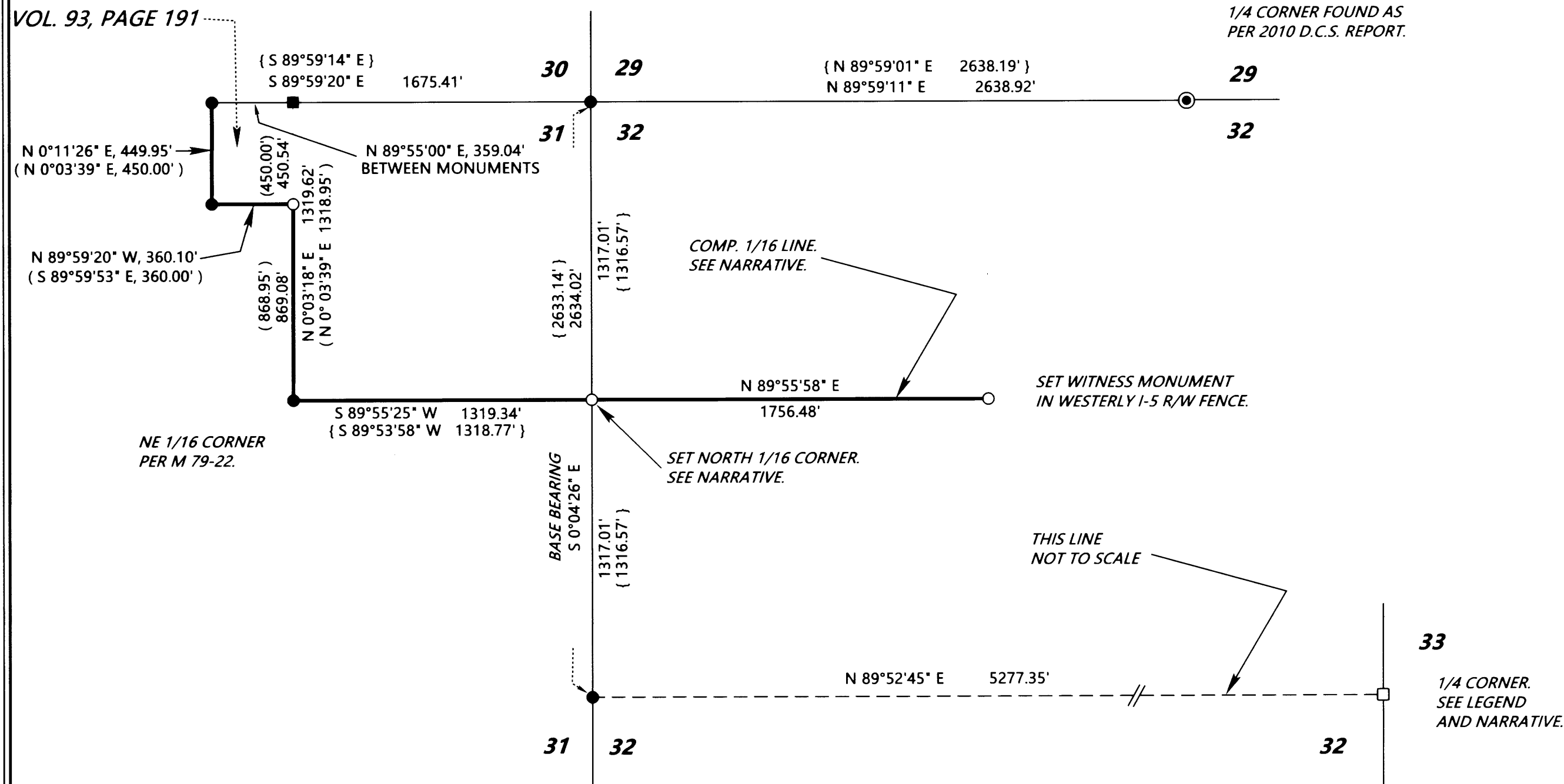
SURVEYED BY: DAVID EDWARDS LAND SURVEYING
P.O. BOX 361
OAKLAND, OREGON 97462
PHONE: (541) 459-0512

FILED
Date: 2-16-2017 By: JC
This survey consists of:
Map: M173-7
Name: _____
Corner Kpt: _____
DOUGLAS COUNTY
SURVEYOR

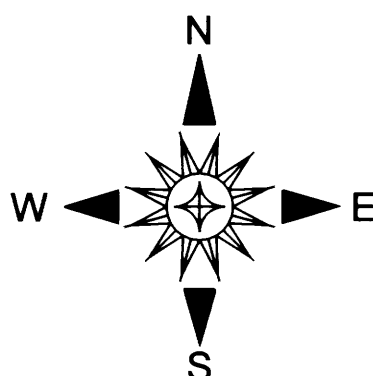


SECTION CORNER.
A 19" DIAM. OAK BEARS N 70° E, 20.3 FEET.
A 7" DIAM. OAK BEARS S 39° W, 13.7 FEET
AN 8" DIAM. OAK BEARS N 52° W, 45.6 FEET.
WARE'S BT TO THE SE IS GONE.
ALL WITH HEALED BLAZE.

VOL. 93, PAGE 191



1/4 CORNER.
A 9" DIAM. OAK BEARS N 53° E, 20.3 FEET.
A 7" DIAM. OAK BEARS S 53° W, 5.2 FEET.
BOTH WITH HEALED BLAZE.



LEGEND

- INDICATES ANCIENT WOODEN CORNER TO FENCES BEARING NORTH AND EAST AND ACCEPTED AS THE 1/4 CORNER COMMON TO SECTIONS 32 AND 33. SEE NARRATIVE.
- ⊙ INDICATES 1960 COUNTY SURVEYOR BRASS CAP FOUND.
- INDICATES 5/8" DIAM. IRON ROD FOUND PER EITHER M 79-22 OR M 90-9.
- INDICATES 5/8" DIAM. IRON BOLT FOUND, POSSIBLY PER M 61-20.
- INDICATES 5/8" X 30" STEEL REBAR WITH RED PLASTIC CAP MARKED "D.A. EDWARDS-L.S. 2339" SET.
- () DENOTES RECORD DATA PER M 90-9.
- { } DENOTES RECORD DATA PER M 79-22.

————— DENOTES BOUNDARY POSTED AND BLAZED THIS SURVEY.

SCALE: 1" = 500'

COMP. = COMPUTED

BASIS OF BEARINGS: M 79-22 AS SHOWN.

NARRATIVE

THE PURPOSE OF THIS SURVEY IS TO MARK THOSE BOUNDARIES SHOWN AS BOLD LINES HEREON. RANDOM TRAVERSES WERE RUN BETWEEN THE CONTROLLING CORNERS AND OFFSETS MADE TO THE TRUE LINE. THE BOUNDARIES WERE MARKED BY BLAZING TREES ON EACH SIDE OF THE LINE, BY SETTING SIX FOOT STEEL POSTS ALONG THE BOUNDARY AT INTERVALS OF 200 FEET OR LESS AND BY HANGING LIBERAL AMOUNTS OF RED FLAGGING ALONG THE TRUE LINE. FILED SURVEY M 61-20 INDICATES THAT A 5/8" I. ROD WAS SET FOR THE EAST 1/16 CORNER COMMON TO SECTIONS 30 AND 31. M 79-22 FINDS A "BOLT" NEAR THE 1/16 CORNER AS DO WE. I ELECT TO HOLD THE FOUND BOLT FOR EASTING POSITION IN RESETTING THE MISSING MONUMENT AT THE SOUTHEAST CORNER OF VOLUME 93, PAGE 191 THAT WAS SET ON SURVEY M 90-9. I ACCEPT THE ANCIENT WOODEN CORNER POST AS THE 1/4 CORNER COMMON TO SECTIONS 32 AND 33 DUE IN LARGE PART TO THE TESTIMONY OF MR. LYTLE, WHOSE FAMILY HAS OWNED THE LAND SOUTH AND WEST OF THE CORNER FOR MANY DECADES. THIS FENCE CORNER HAS ALWAYS BEEN ACCEPTED AS THE CORNER BY THE ADJOINING LANDOWNERS AND THEREFORE I ACCEPT IT AS WELL. NO TRACE COULD BE FOUND OF THE IRON ROD SHOWN AS SET ON M 79-22 AT THE NORTH 1/16 CORNER COMMON TO SECTIONS 31 AND 32. I COMPUTE THE BEARING OF THE 1/16 LINE EAST OF THIS CORNER AS A MEAN OF BEARINGS ON THE NORTH LINE OF SECTION 32 AND THE EAST-WEST CENTERLINE OF SECTION 32. BEARING TREES FOR THE SET NORTH 1/16 CORNER ARE SCRIBED ACCORDING TO THE 2009 B.L.M. MANUAL, MEASURED TO CENTER OF TREE AT ROOT CROWN AND ARE SITUATED AS FOLLOWS:

- A 14" DIAM. OAK BEARS S 52° E, 4.1 FEET.
- A 14" DIAM. FIR BEARS S 67° W, 16.2 FEET.
- A SIX FOOT STEEL POST IS SET 2 FEET EAST.

FIELD CREW: BRANT MILLER AND ERIC SPRINKLE.

EQUIPMENT: NIKON TOTAL STATION.

COMPUTATIONS AND DRAFTING: DAVID EDWARDS.

MAP FILE M173-7

MAP FILE M173-7