

# CES|NW

13190 SW 68th Parkway, Suite 150  
Tigard, Oregon 97223  
503.968.6655 www.cesnw.com  
CESNW PROJ: 3160  
DATE: 8-23-2017

## RECORD OF SURVEY

LOCATED IN THE NORTHEAST ONE-QUARTER OF SECTION 17, TOWNSHIP  
22 SOUTH, RANGE 5 WEST, WILLAMETTE MERIDIAN, CITY OF DRAIN,  
DOUGLAS COUNTY, OREGON

FOR: EMBREE ASSET GROUP

FILED  
Date: 10/11/2017 By: *X*  
This Survey Consists of:  
Map: M173-62  
Narrative:  
Corner Rpt.:  
DOUGLAS COUNTY  
SURVEYOR

REGISTERED  
PROFESSIONAL  
LAND SURVEYOR  
*Paul A. Kohn*  
OREGON  
MAY 21, 2013  
PAUL A. KOHN  
58964PLS  
RENEWS: 6/30/17

MAP FILE M173-62

### NARRATIVE

THE PURPOSE OF THIS SURVEY IS TO MONUMENT THE BOUNDARIES OF THAT TRACT OF LAND CONSOLIDATED IN DOUGLAS COUNTY SURVEY NUMBER M173-42 AND DESCRIBED IN DOCUMENT NUMBER 2017-004732 AND 2017-004733, DOUGLAS COUNTY DEED RECORDS.

THE BASIS OF BEARINGS IS NORTH 87°42'52" WEST ALONG A LINE THAT IS 32.63 FEET SOUTHERLY OF MONUMENT NUMBER [111] AND 21.08 FEET SOUTHERLY OF MONUMENT NUMBER [112] PER DOUGLAS COUNTY SURVEY NUMBER 38-013 A-C ODOT KEY NUMBER 10966, DATED 4-18-2006, STATE HIGHWAY 38-013.

I ESTABLISHED THE CENTERLINE OF HIGHWAY 38 STATE HIGHWAY 45 (UMPQUA HIGHWAY) BY HOLDING MONUMENT NUMBERS [100], [110],[111] AND [112] BY COORDINATE AND BY THEIR RELATIONSHIP TO THE CENTERLINE PER SAID SURVEY NUMBER 38-013 A-C. THAT RESULTING LINE WAS OFFSET 30.00 NORTHERLY FOR THE NORTH LINE OF HIGHWAY 38.

THE CENTERLINE OF 4TH STREET WAS ESTABLISHED HOLDING A POINT 30.00 FEET WEST OF MONUMENT NUMBER [102] AND 30.00 FEET EAST OF MONUMENT NUMBER [105]. THAT RESULTING LINE WAS THEN OFFSET 30.00 FEET EASTERLY FOR THE EAST LINE OF 4TH STREET

THE SOUTH LINE OF 'C' STREET WAS ESTABLISHED AS A LINE BETWEEN MONUMENT NUMBER [105] AND MONUMENT NUMBER [108].

THE WEST LINE OF 3RD STREET WAS ESTABLISHED AS A LINE BETWEEN MONUMENT NUMBER [101] AND MONUMENT NUMBER [113].

AFTER THE BLOCK WAS ESTABLISHED I PRO-RATED THE LOT DIMENSIONS ACCORDINGLY.

### LEGEND

○ = SET 5/8"x30" IRON ROD WITH ORANGE PLASTIC CAP INSCRIBED "CES NW INC" ON AUGUST 23, 2017

□ = SET 1 1/4" COPPER DISC INSCRIBED "CES NW INC" ON AUGUST 23, 2017

● = FOUND MONUMENT AS NOTED

(ALL FOUND MONUMENTS ARE FLUSH OR NEAR THE SURFACE UNLESS OTHERWISE NOTED)

FTC = FROM TRUE CORNER

AL-CAP = ALUMINUM CAP

IP = IRON PIPE

IR = IRON ROD

W/YPC = WITH YELLOW PLASTIC CAP

FTC = FROM TRUE CORNER

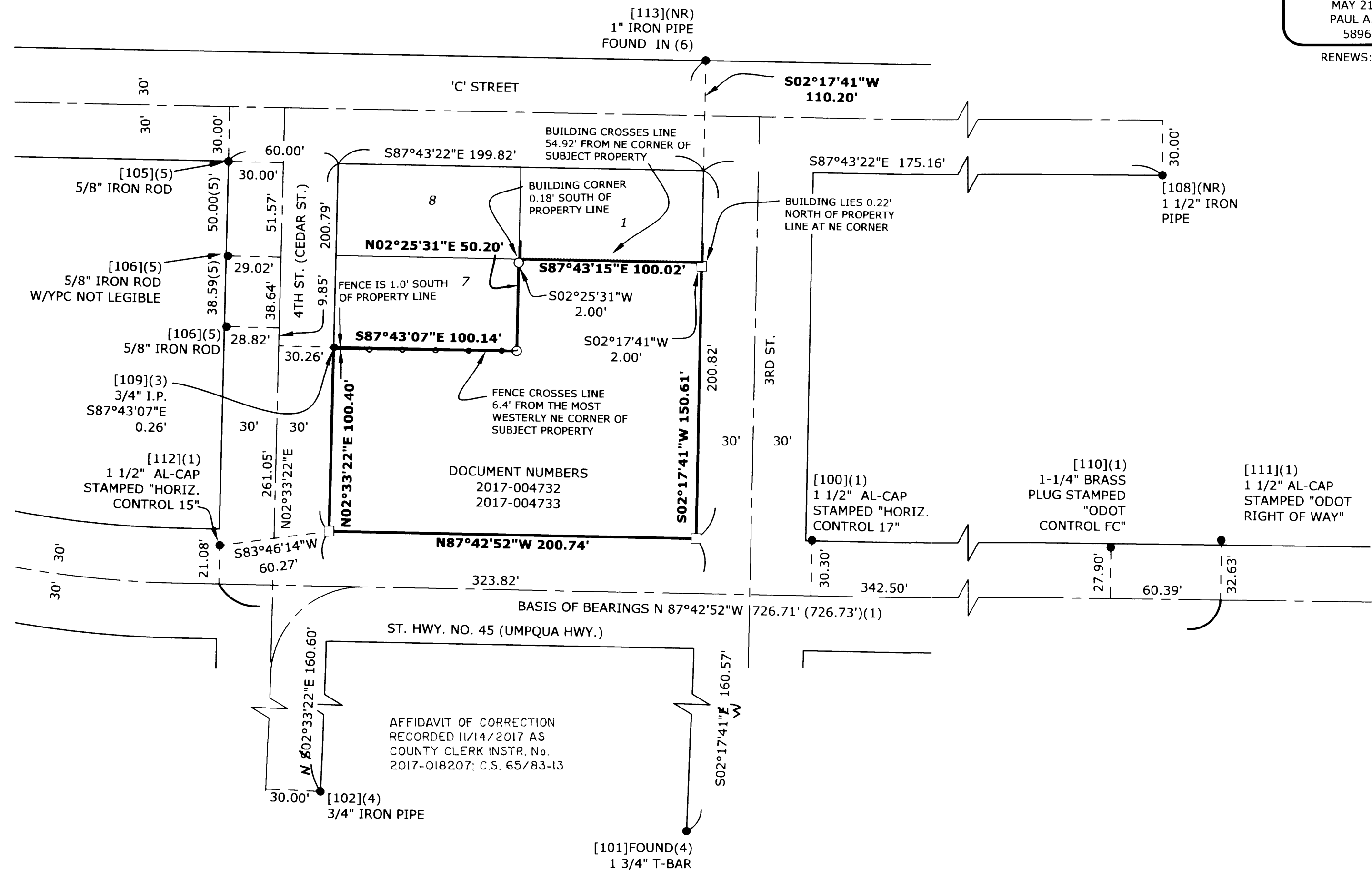
NR = RECORD OF ORIGIN NOT LOCATED

###.##' = DENOTES MEASURED DISTANCE

(###.##')(#) = DENOTES RECORD DISTANCE PER REFERENCE NUMBER

###.##'(#)= DENOTES MEASURED AND RECORD DISTANCE(HELD) PER REFERENCE NUMBER

[##](#) = DENOTES FOUND MONUMENT NUMBER AND REFERENCE NUMBER



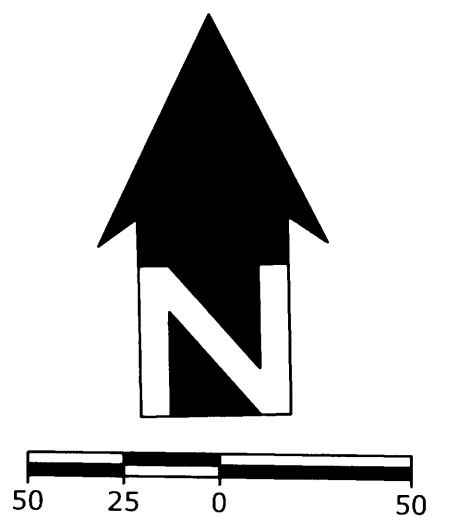
AFFIDAVIT OF CORRECTION  
RECORDED 11/14/2017 AS  
COUNTY CLERK INSTR. No.  
2017-018207; C.S. 65/83-13

### REFERENCES

- STATE HWY 38-013-A-C
- "PLAT OF DRAIN"
- M19-25
- P1994-0096
- M115-80
- M14-60
- M173-42

- 2017-004732
- 2017-004733

ALL REFERENCED DOCUMENTS ARE RECORDS OF DOUGLAS COUNTY



MAP FILE M173-62