

NORTHEAST 1/4 OF SECTION 29, TOWNSHIP 28 SOUTH RANGE 4 WEST W.M.

SURVEY FOR: LONE ROCK TIMBERLAND CO.

P.O. BOX 1127 ROSEBURG, OREGON

SURVEYED BY: LONE ROCK TIMBER MANAGEMENT COMPANY

P.O. BOX 1127 ROSEBURG, OR 97470

TRACT : FROZEN DATE : JULY 2017
CREEK

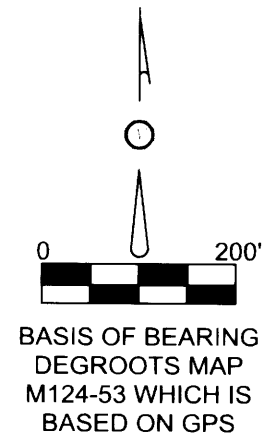
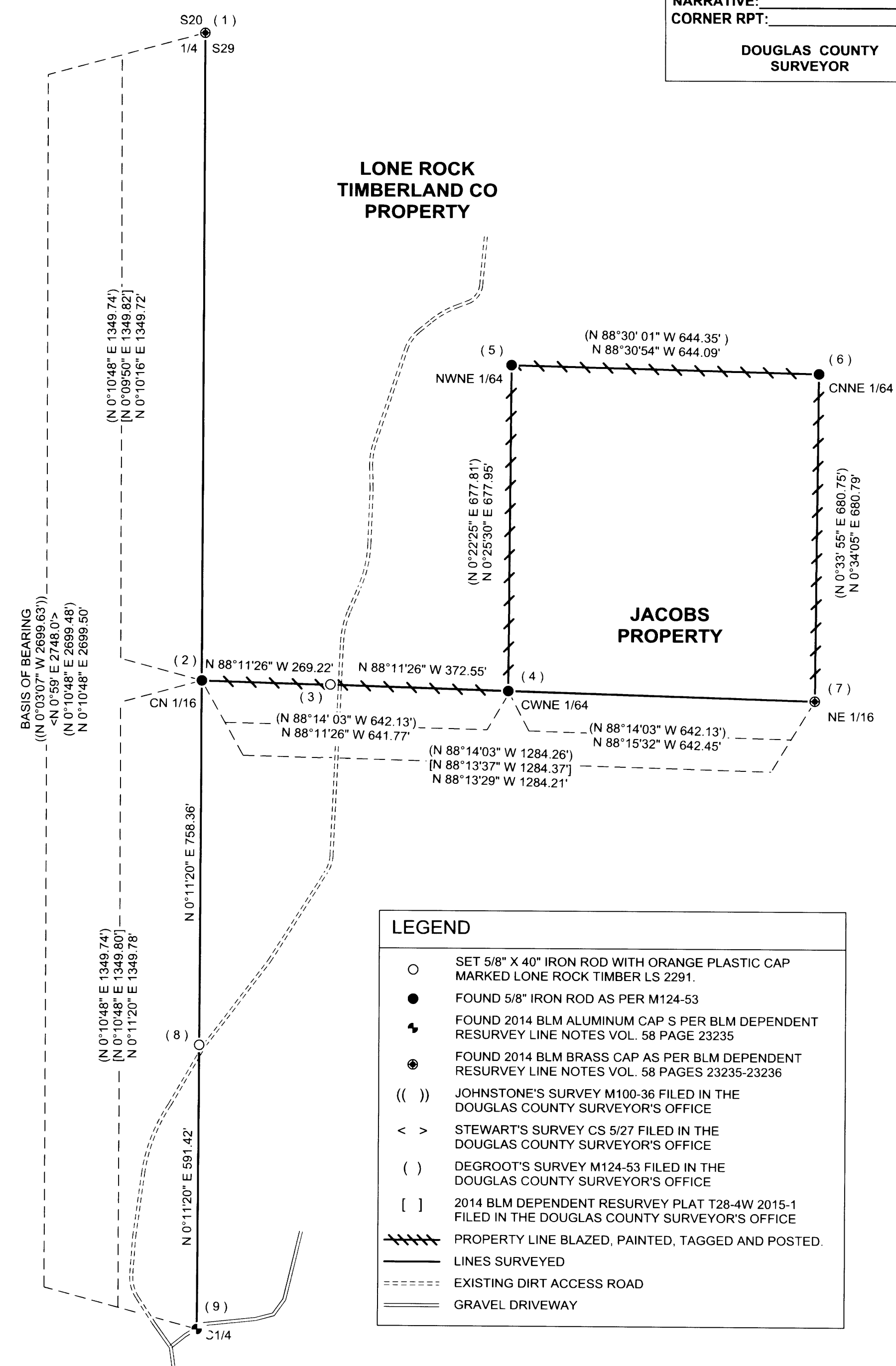
FILED
DATE : 8-8-2017
THIS SURVEY CONSISTS OF:
MAP: M173-47
NARRATIVE:
CORNER RPT:
DOUGLAS COUNTY SURVEYOR

NARRATIVE

THE PURPOSE OF THIS SURVEY IS TO REFERENCE AND REMARK PROPERTY LINES FOR TIMBERLAND MANAGEMENT ACTIVITIES. WE BEGAN THIS SURVEY WITH THE INTENT OF FILING A BOUNDARY LINE ADJUSTMENT BETWEEN THE LONE ROCK PROPERTY AND THE JACOBS PROPERTY. DUE TO LIEN HOLDER RESTRICTIONS ON THE JACOBS PROPERTY WE WERE UNABLE TO CONTINUE WITH THE BOUNDARY LINE ADJUSTMENT. WE ARE FILING THIS MAP AS A RECORD OF THE SURVEY WE CONDUCTED. WE INITIATED OUR SURVEY AT THE CENTER 1/4 (9) OF SECTION 29 WE RAN A RANDOM CLOSED LOOP TRAVERSE FROM THE CENTER 1/4 CORNER (9) TO THE NORTH 1/4 CORNER OF SECTION 29 (1) AND EAST AROUND THE SOUTHEAST 1/4 OF THE NORTHEAST 1/4 OF SECTION 29, TYING CORNERS (4), (5), (6), AND (7). WE ALSO RAN A RANDOM CLOSED LOOP TO THE CENTER NORTH 1/16TH CORNER (2) IN ORDER TO ESTABLISH REFERENCE MONUMENTS (3) AND (8) ON THE RESPECTIVE SUBDIVISIONAL LINES NEAR THE DIRT ACCESS ROAD. WE ALSO RESTORED THE NORTH 1/4 CORNER AFTER RECENT LOGGING ACTIVITIES DISTURBED IT. THIS SURVEY WAS CONDUCTED USING A NIKON DTM 522 TOTAL STATION AND A GEOMAX ZIPP 20R TOTAL STATION, WITH DANIEL SAILY, JOSH FOWLER AND INGNACIO ROMAN ASSISTING ME.

CORNER INFORMATION

- 1) THE QUARTER CORNER BETWEEN SECTIONS 20 AND 29 GCDB 240300
FOUND 2014 BLM BRASS CAP AS PER VOL. 58 PG. 23235-23236.
-- 12" X 1" TALL ROTTEN DOUGLAS-FIR STUMP BEARS S10 1/4"W 42.9' (RECORDS10"W 42.2') HEALED FACE. WE TAG AND PLACE MAG HUB AT CENTER.
-- 26" X 1" TALL DOUGLAS-FIR STUMP BEARS S66 1/4"E 19.0' (RECORD S66"E 19.0') WE COVER WITH TIN, TAG AND PLACE MAG HUB AT CENTER.
-- 16" X 1" TALL CEDAR STUMP BEARS N15 3/4"W 32.8'(RECORD N15 3/4"W 32.8') WE COVER WITH TIN, TAG AND PLACE MAG HUB AT CENTER.
-- 12" X 2' TALL DOUGLAS-FIR STUMP BEARS N28 3/4"W 23.4'(RECORD N29"W 23.4') WE COVER WITH TIN, TAG AND PLACE MAG HUB AT CENTER.
-- RECORD MADRONE SNAG (N10 1/4"E 28.4') NOW TIPPED OVER AND ROLLED OUT OF POSITION.
-- NEW 11" GRAND FIR BEARS N 67 3/4"E 24.8'. WE TAG AND SCRIBE 1/4 S20 BT.
-- SET 5/8" X 40" IRON ROD WITH ORANGE PLASTIC CAP MARKED LONE ROCK TIMBER LS 2291 BEARS S84 1/2"W 13.25'. WE PLACE U-POST BESIDE.
-- SET 5/8" X 40" IRON ROD WITH ORANGE PLASTIC CAP MARKED LONE ROCK TIMBER LS 2291 BEARS N11 3/4"W 30.82'. WE PLACE U-POST BESIDE.
CORNER LIES ON EAST FACING SLOPE AT EDGE OF CLEAR CUT. WE FOUND CORNER PULLED OVER BY RECENT LOGGING ACTIVITY. WE STRAIGHTEN AND PLACE A U-POST 1' NORTH.
- 2) CENTER NORTH 1/16TH CORNER GCDB 240260
FOUND 5/8" IRON ROD WITH ALUMINUM CAP AS PER M124-53.
-- 19" CEDAR BEARS N74 3/4"E 18.8' (2014 RECORD FIR N73 3/4"E 18.6') TAG AND PARTIALLY HEALED FACE.
-- 17" CEDAR BEARS S37 1/4"W 9.6' (2014 RECORD S36" W 10.0') TAG AND PARTIALLY HEALED FACE.
CORNER LIES ON STEEP EAST SLOPE 0.4' ABOVE GROUND.
- 3) REFERENCE MONUMENT TO PROPERTY LINE.
SET 5/8"X40" IRON ROD WITH YELLOW PLASTIC CAP MARKED LONE ROCK TIMBER LS 2291.
-- 14" CEDAR BEARS N30 1/2"W 20.6'. WE SCRIBE BT AND TAG.
CORNER LIES ON CUT SLOPE OF DIRT ACCESS ROAD 15' WEST OF CENTERLINE.
- 4) CENTER WEST NORTHEAST 1/64TH CORNER
FOUND 5/8" IRON ROD AS PER M124-53.
-- 34" DOUGLAS-FIR BEARS N60 3/4"E 46.0' (RECORD N23"E 45.7') TAG AND WELL HEALED FACE.
-- 32" GRAND FIR STUMP BEARS N22"E 69.8' (RECORD HEMLOCK N63"E 69.4') TAG AND WE PLACE MAG HUB AT CENTER.
CORNER LIES BESIDE 6" PRESSURE TREATED FENCEPOST. CORNER IS SLIGHTLY BENT AND THE RECORD PLASTIC CAP IS MISSING.
- 5) THE NORTHWEST NORTHEAST 1/64TH CORNER.
FOUND 5/8" IRON ROD WITH YELLOW PLASTIC CAP AS PER M124-53
-- 18" DOUGLAS-FIR FOUND AT RECORD S87"E 94.3'. PARTIALLY VISIBLE SCRIBE AND TAG.
-- 24" X 2' TALL INCENSE CEDAR STUMP FOUND AT RECORD N49"E 25.7' HEALED FACE AND TAG.
WE COVER WITH TIN AND PLACE MAGHUB AT CENTER.
CORNER LIES IN GRASSY AREA SOUTHEAST OF OLD BARN SITE.
- 6) THE CENTER NORTH NORTHEAST 1/64TH CORNER
FOUND 5/8" IRON ROD WITH YELLOW PLASTIC CAP AS PER M124-53.
-- 8" DOUGLAS-FIR FOUND AT RECORD N64"W 25.5'. TAG AND HEALED FACE.
-- 10" DOUGLAS-FIR FOUND AT RECORD N31"E 4.2'. TAG AND HEALED FACE.
CORNER LIES ON WEST FACING SLOPE APPROXIMATELY 25' EAST OF OLD ROAD.
- 7) THE NORTHEAST 1/16TH CORNER GCDB 260260
FOUND 2014 BLM BRASS CAP AS PER BLM DEPENDENT RESURVEY NOTES VOL. 58 PAGE 23242-23243.
-- 8" DOUGLAS-FIR BEARS N73 1/2"W 30.7' (2014 RECORD N73 1/4"W 30.3') TAG AND WELL HEALED FACE.
-- 13" DOUGLAS-FIR BEARS N23 3/4"E 32.3' (2014 RECORD N23 3/4"E 32.5') TAG AND WELL HEALED FACE.
CORNER LIES IN NORTHEAST- SOUTHWEST RUNNING DITCH APPROXIMATELY 5' BELOW SURROUNDING GROUND LEVEL. METAL FENCE POST BESIDE.
- 8) REFERENCE MONUMENT TO PROPERTY LINE.
SET 5/8"X40" IRON ROD WITH YELLOW PLASTIC CAP MARKED LONE ROCK TIMBER LS 2291.
-- 16" DOUGLAS-FIR BEARS S44"W 15.4'. WE TAG AND SCRIBE BT.
CORNER LIES ON NORTHWEST CUT SLOPE OF DIRT ACCESS ROAD 0.2' ABOVE GROUND LEVEL. WE PLACE A 5 1/2" STEEL U-POST 1.0' NORTH.
- 9) THE CENTER QUARTER CORNER OF SECTION 29. GCDB 240240
FOUND 2014 BLM ALUMINUM CAP AS PER VOL. 58 PG.23240.
-- 42" DOUGLAS-FIR FOUND AT 2014 RECORD S7 1/4"E 31.5'. HEALED FACE AND TAG.
-- RECORD 5/8" IRON REFERENCE ROD WITH ALUMINUM CAP FOUND AT 1986 RECORD SOUTH 22.0'.
-- RECORD 23" CEDAR IS DOWN HAS BEEN WASHED OUT BY ACTION OF FROZEN CREEK AND IS NOW OUT OF POSITION. (2014 RECORD N61 3/4"W 20.8').
-- WE ARE UNABLE TO LOCATE RECORD 1986 FENCE CORNER AT S25"14"W 53.0'.
CORNER POSITION LIES IN FROZEN CREEK. THE 2014 BLM ALUMINUM CAP IS SET IN A BRIDGE DECK ON THE NORTH EDGE OF THE SOUTH RUNNING PLANK.



REGISTERED PROFESSIONAL LAND SURVEYOR
Ken W. Hoffine
OREGON
JULY 16, 1987
KEN W. HOFFINE
2291
EXPIRES: 6/30/2019

LEGEND	
○	SET 5/8" X 40" IRON ROD WITH ORANGE PLASTIC CAP MARKED LONE ROCK TIMBER LS 2291.
●	FOUND 5/8" IRON ROD AS PER M124-53
⚡	FOUND 2014 BLM ALUMINUM CAP S PER BLM DEPENDENT RESURVEY LINE NOTES VOL. 58 PAGE 23235
⊙	FOUND 2014 BLM BRASS CAP AS PER BLM DEPENDENT RESURVEY LINE NOTES VOL. 58 PAGES 23235-23236
(())	JOHNSTONE'S SURVEY M100-36 FILED IN THE DOUGLAS COUNTY SURVEYOR'S OFFICE
< >	STEWART'S SURVEY CS 5/27 FILED IN THE DOUGLAS COUNTY SURVEYOR'S OFFICE
()	DEGROOT'S SURVEY M124-53 FILED IN THE DOUGLAS COUNTY SURVEYOR'S OFFICE
[]	2014 BLM DEPENDENT RESURVEY PLAT T28-4W 2015-1 FILED IN THE DOUGLAS COUNTY SURVEYOR'S OFFICE
▬▬▬▬▬▬	PROPERTY LINE BLAZED, PAINTED, TAGGED AND POSTED.
— — — — —	LINES SURVEYED
-----	EXISTING DIRT ACCESS ROAD
=====	GRAVEL DRIVEWAY

MAP FILE M173-47